

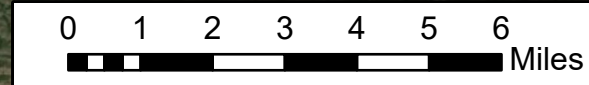
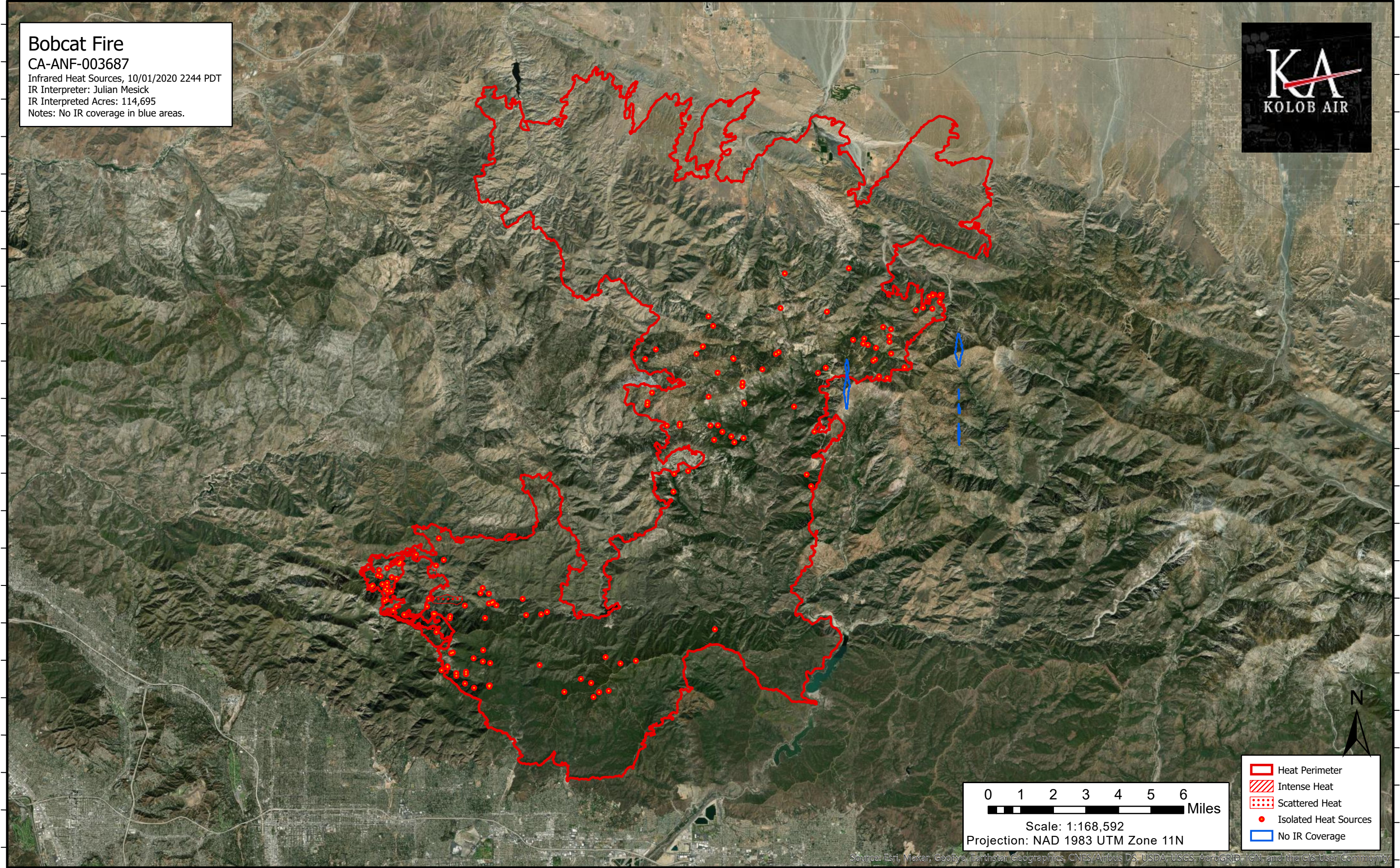
118°16'W 118°14'W 118°12'W 118°10'W 118°8'W 118°6'W 118°4'W 118°2'W 118°W 117°58'W 117°56'W 117°54'W 117°52'W 117°50'W 117°48'W 117°46'W 117°44'W 117°42'W 117°40'W 117°38'W 117°36'W 117°34'W

Bobcat Fire
CA-ANF-003687
Infrared Heat Sources, 10/01/2020 2244 PDT
IR Interpreter: Julian Mesick
IR Interpreted Acres: 114,695
Notes: No IR coverage in blue areas.



34°30'N
34°28'N
34°26'N
34°24'N
34°22'N
34°20'N
34°18'N
34°16'N
34°14'N
34°12'N
34°10'N
34°8'N

34°30'N
34°28'N
34°26'N
34°24'N
34°22'N
34°20'N
34°18'N
34°16'N
34°14'N
34°12'N
34°10'N
34°8'N



Scale: 1:168,592
Projection: NAD 1983 UTM Zone 11N

- Heat Perimeter
- Intense Heat
- Scattered Heat
- Isolated Heat Sources
- No IR Coverage

Source: Esri, Maxar, GeoEye, Earthstar Geographics, CNES/Airbus DS, USDA, USGS, AeroGRID, IGN, and the GIS User Community

118°16'W 118°14'W 118°12'W 118°10'W 118°8'W 118°6'W 118°4'W 118°2'W 118°W 117°58'W 117°56'W 117°54'W 117°52'W 117°50'W 117°48'W 117°46'W 117°44'W 117°42'W 117°40'W 117°38'W 117°36'W 117°34'W