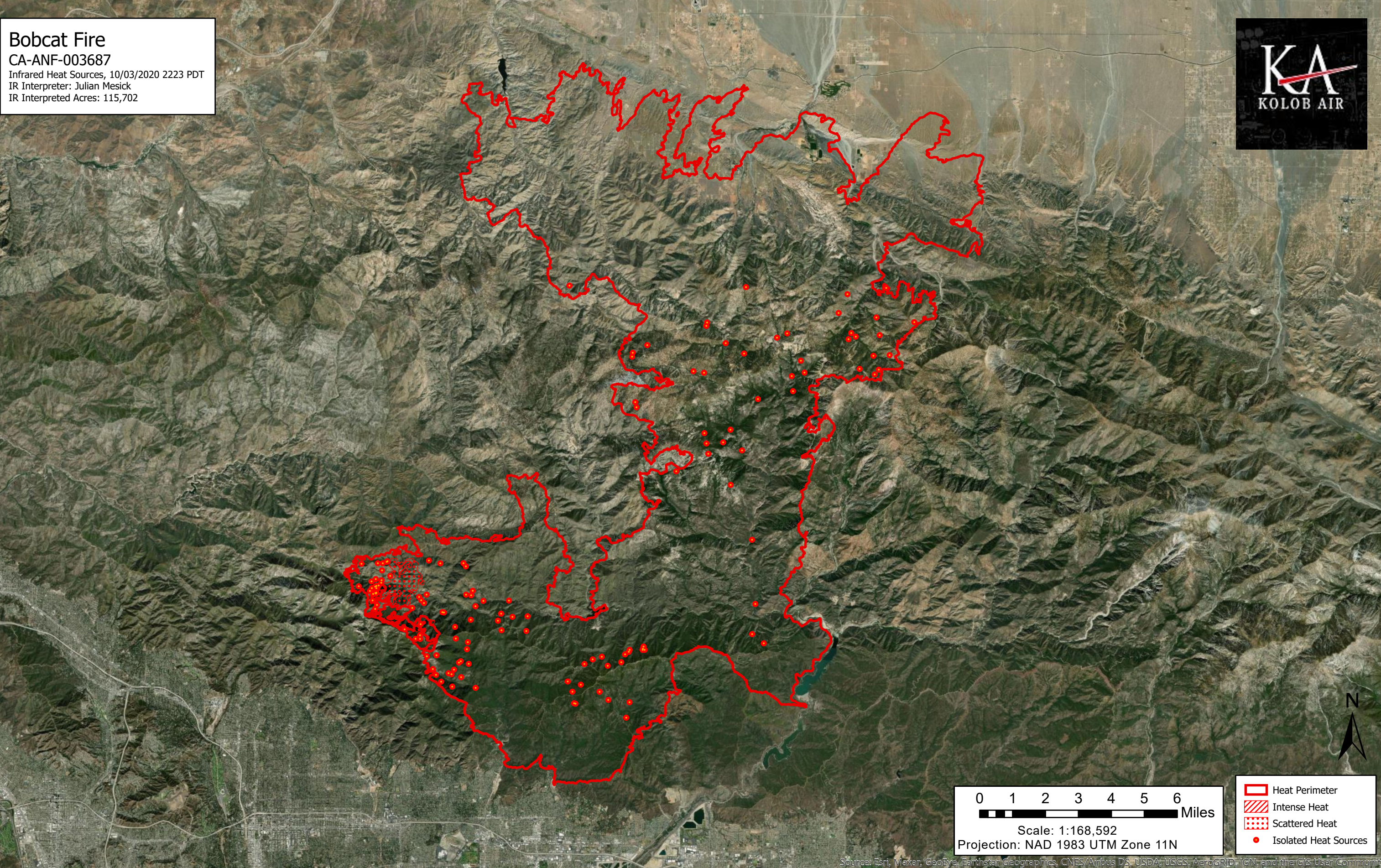
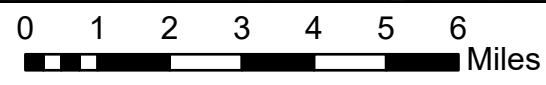


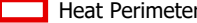



118°16'W 118°14'W 118°12'W 118°10'W 118°8'W 118°6'W 118°4'W 118°2'W 118°W 117°58'W 117°56'W 117°54'W 117°52'W 117°50'W 117°48'W 117°46'W 117°44'W 117°42'W 117°40'W 117°38'W 117°36'W 117°34'W



**Bobcat Fire**  
CA-ANF-003687  
Infrared Heat Sources, 10/03/2020 2223 PDT  
IR Interpreter: Julian Mesick  
IR Interpreted Acres: 115,702



Scale: 1:168,592  
Projection: NAD 1983 UTM Zone 11N

-  Heat Perimeter
-  Intense Heat
-  Scattered Heat
-  Isolated Heat Sources

Source: Esri, Maxar, GeoEye, Earthstar Geographics, CNES/Airbus DS, USDA, USGS, AeroGRID, IGN, and the GIS User Community

118°16'W 118°14'W 118°12'W 118°10'W 118°8'W 118°6'W 118°4'W 118°2'W 118°W 117°58'W 117°56'W 117°54'W 117°52'W 117°50'W 117°48'W 117°46'W 117°44'W 117°42'W 117°40'W 117°38'W 117°36'W 117°34'W

34°30'N  
34°28'N  
34°26'N  
34°24'N  
34°22'N  
34°20'N  
34°18'N  
34°16'N  
34°14'N  
34°12'N  
34°10'N  
34°8'N

34°30'N  
34°28'N  
34°26'N  
34°24'N  
34°22'N  
34°20'N  
34°18'N  
34°16'N  
34°14'N  
34°12'N  
34°10'N  
34°8'N