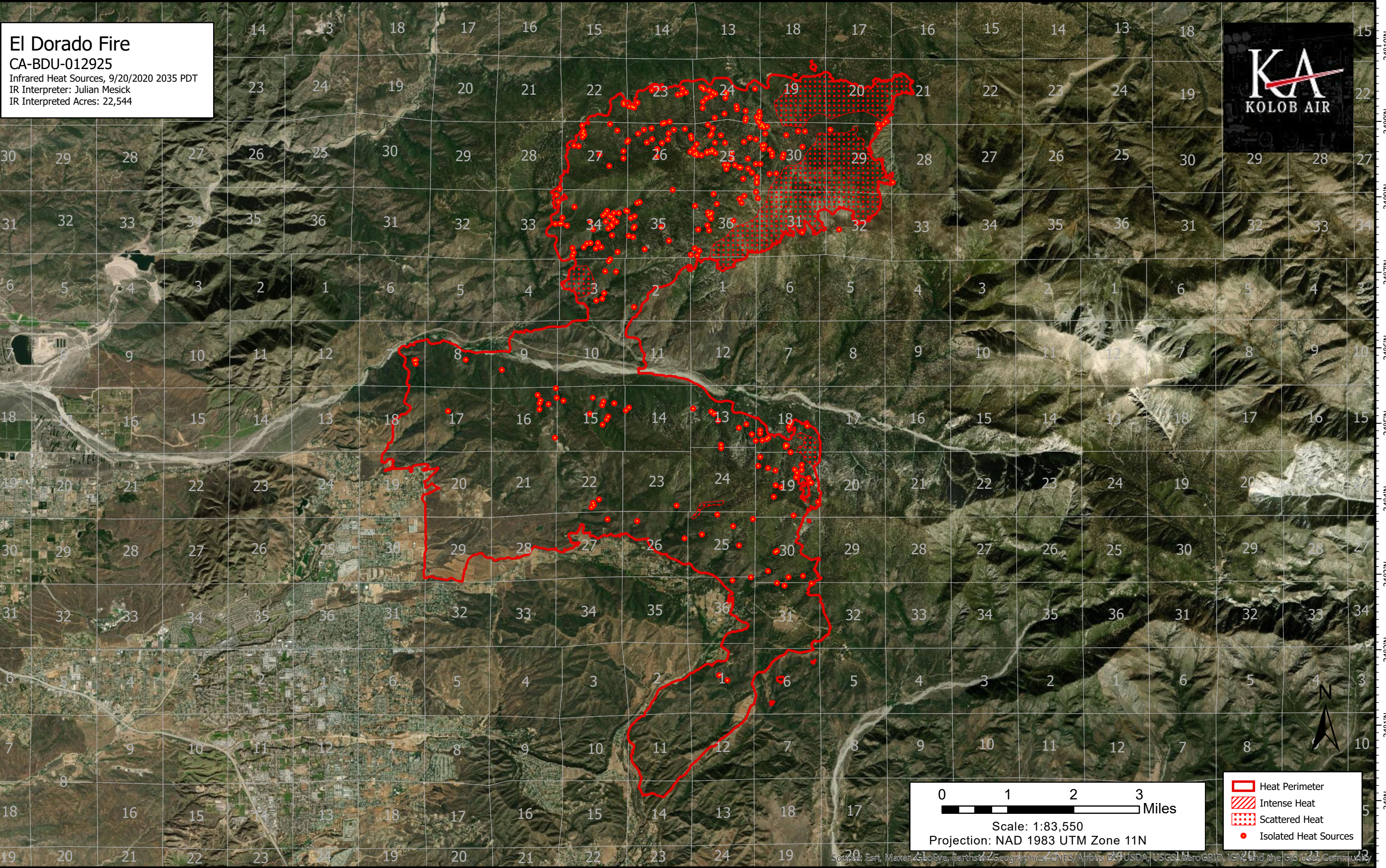
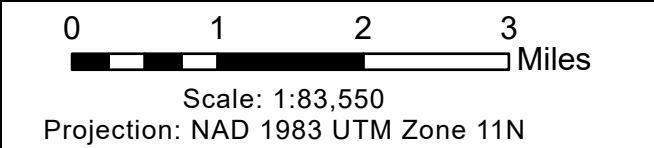
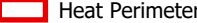





117°7'W 117°6'W 117°5'W 117°4'W 117°3'W 117°2'W 117°1'W 117°W 116°59'W 116°58'W 116°57'W 116°56'W 116°55'W 116°54'W 116°53'W 116°52'W 116°51'W 116°50'W 116°49'W 116°48'W 116°47'W 116°46'W



El Dorado Fire
CA-BDU-012925
Infrared Heat Sources, 9/20/2020 2035 PDT
IR Interpreter: Julian Mesick
IR Interpreted Acres: 22,544



-  Heat Perimeter
-  Intense Heat
-  Scattered Heat
-  Isolated Heat Sources



117°7'W 117°6'W 117°5'W 117°4'W 117°3'W 117°2'W 117°1'W 117°W 116°59'W 116°58'W 116°57'W 116°56'W 116°55'W 116°54'W 116°53'W 116°52'W 116°51'W 116°50'W 116°49'W 116°48'W 116°47'W 116°46'W

Source: Esri, Maxar, GeoEye, Earthstar, Geographics, CNES/Airbus DS, USDA, USGS, AeroGRID, IGN, and the GIS User Community