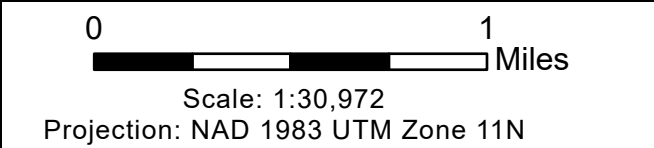
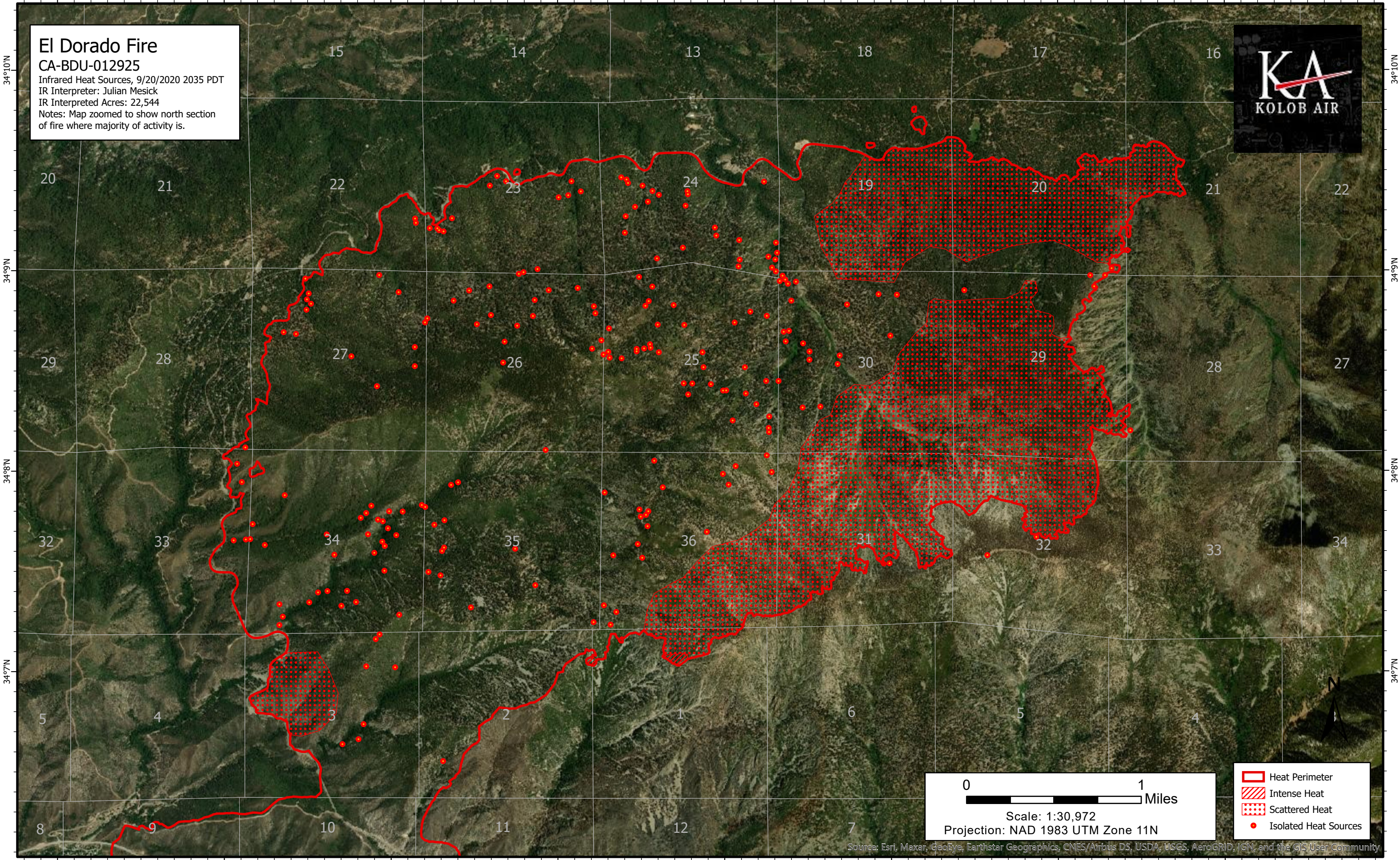


117°W 116°59'W 116°58'W 116°57'W 116°56'W 116°55'W 116°54'W 116°53'W

El Dorado Fire
CA-BDU-012925
Infrared Heat Sources, 9/20/2020 2035 PDT
IR Interpreter: Julian Mesick
IR Interpreted Acres: 22,544
Notes: Map zoomed to show north section
of fire where majority of activity is.



- Heat Perimeter
- Intense Heat
- Scattered Heat
- Isolated Heat Sources

Source: Esri, Maxar, GeoEye, Earthstar Geographics, CNES/Airbus DS, USDA, USGS, AeroGRID, IGN, and the GIS User Community

117°W 116°59'W 116°58'W 116°57'W 116°56'W 116°55'W 116°54'W 116°53'W