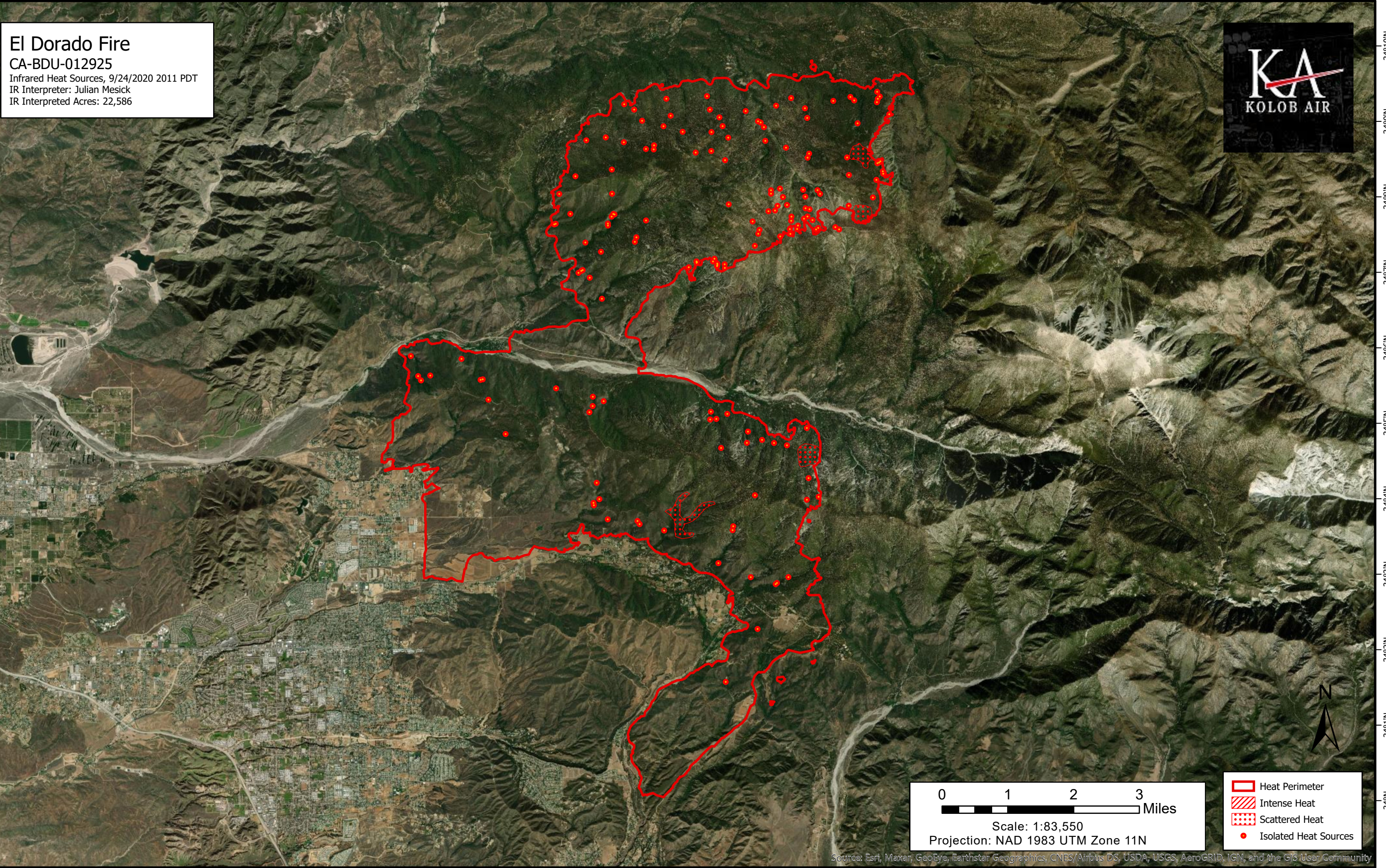


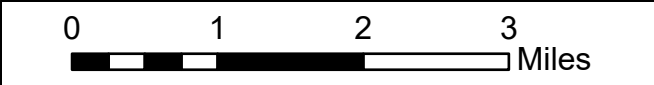
117°7'W 117°6'W 117°5'W 117°4'W 117°3'W 117°2'W 117°1'W 117°W 116°59'W 116°58'W 116°57'W 116°56'W 116°55'W 116°54'W 116°53'W 116°52'W 116°51'W 116°50'W 116°49'W 116°48'W 116°47'W 116°46'W

**El Dorado Fire**  
CA-BDU-012925  
Infrared Heat Sources, 9/24/2020 2011 PDT  
IR Interpreter: Julian Mesick  
IR Interpreted Acres: 22,586



34°10'N  
34°9'N  
34°8'N  
34°7'N  
34°6'N  
34°5'N  
34°4'N  
34°3'N  
34°2'N  
34°1'N  
34°N

34°10'N  
34°9'N  
34°8'N  
34°7'N  
34°6'N  
34°5'N  
34°4'N  
34°3'N  
34°2'N  
34°1'N  
34°N



Scale: 1:83,550  
Projection: NAD 1983 UTM Zone 11N

- Heat Perimeter
- Intense Heat
- Scattered Heat
- Isolated Heat Sources



117°7'W 117°6'W 117°5'W 117°4'W 117°3'W 117°2'W 117°1'W 117°W 116°59'W 116°58'W 116°57'W 116°56'W 116°55'W 116°54'W 116°53'W 116°52'W 116°51'W 116°50'W 116°49'W 116°48'W 116°47'W 116°46'W

Source: Esri, Maxar, GeoEye, Earthstar Geographics, CNES/Airbus DS, USDA, USGS, AeroGRID, IGN, and the GIS User Community