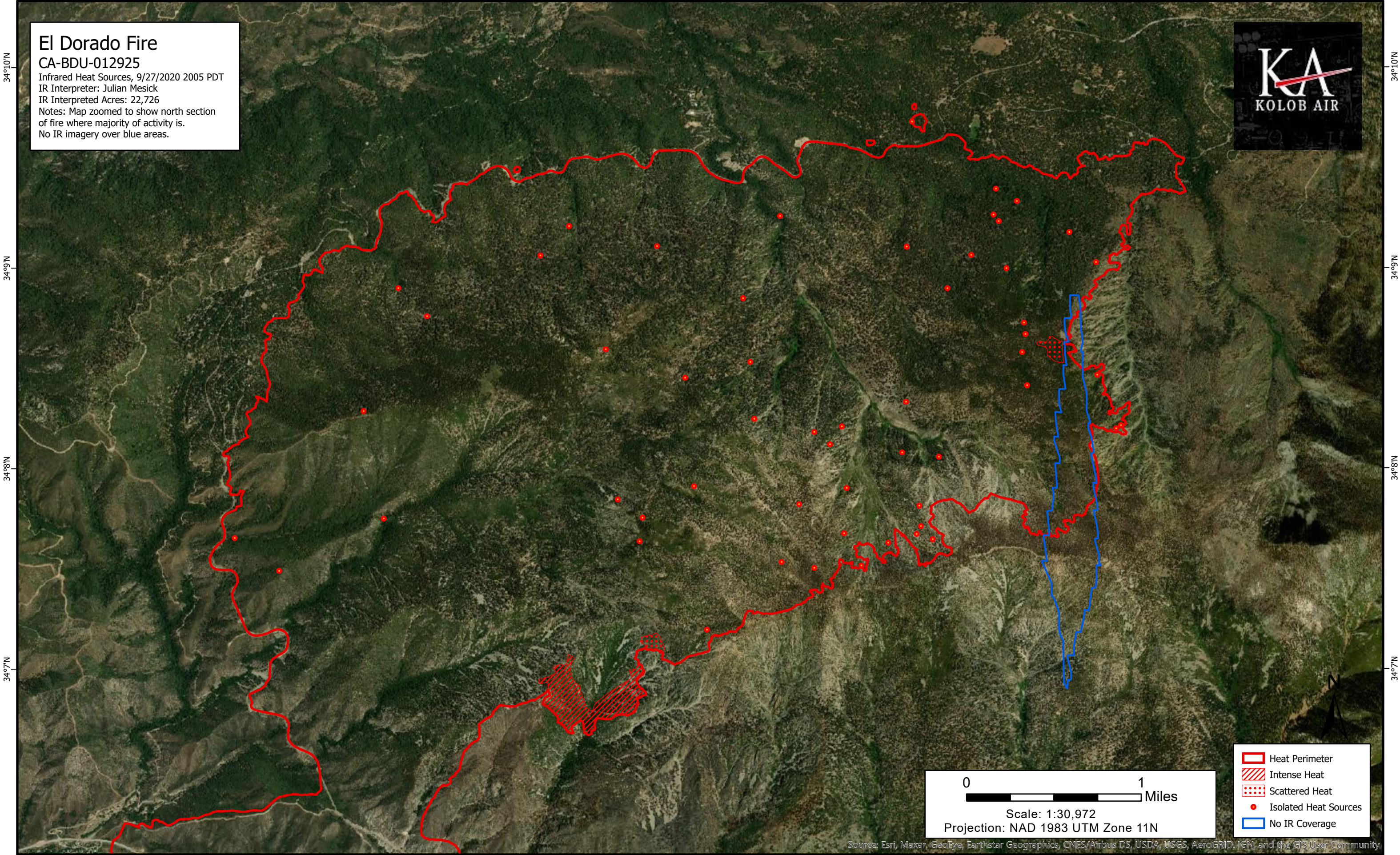


117°W 116°59'W 116°58'W 116°57'W 116°56'W 116°55'W 116°54'W 116°53'W

**El Dorado Fire**  
CA-BDU-012925  
Infrared Heat Sources, 9/27/2020 2005 PDT  
IR Interpreter: Julian Mesick  
IR Interpreted Acres: 22,726  
Notes: Map zoomed to show north section  
of fire where majority of activity is.  
No IR imagery over blue areas.



0 1 Miles  
Scale: 1:30,972  
Projection: NAD 1983 UTM Zone 11N

- Heat Perimeter
- Intense Heat
- Scattered Heat
- Isolated Heat Sources
- No IR Coverage

Source: Esri, Maxar, GeoEye, Earthstar Geographics, CNES/Airbus DS, USDA, USGS, AeroGRID, IGN, and the GIS User Community

117°W 116°59'W 116°58'W 116°57'W 116°56'W 116°55'W 116°54'W 116°53'W

34°10'N  
34°9'N  
34°8'N  
34°7'N

34°10'N  
34°9'N  
34°8'N  
34°7'N