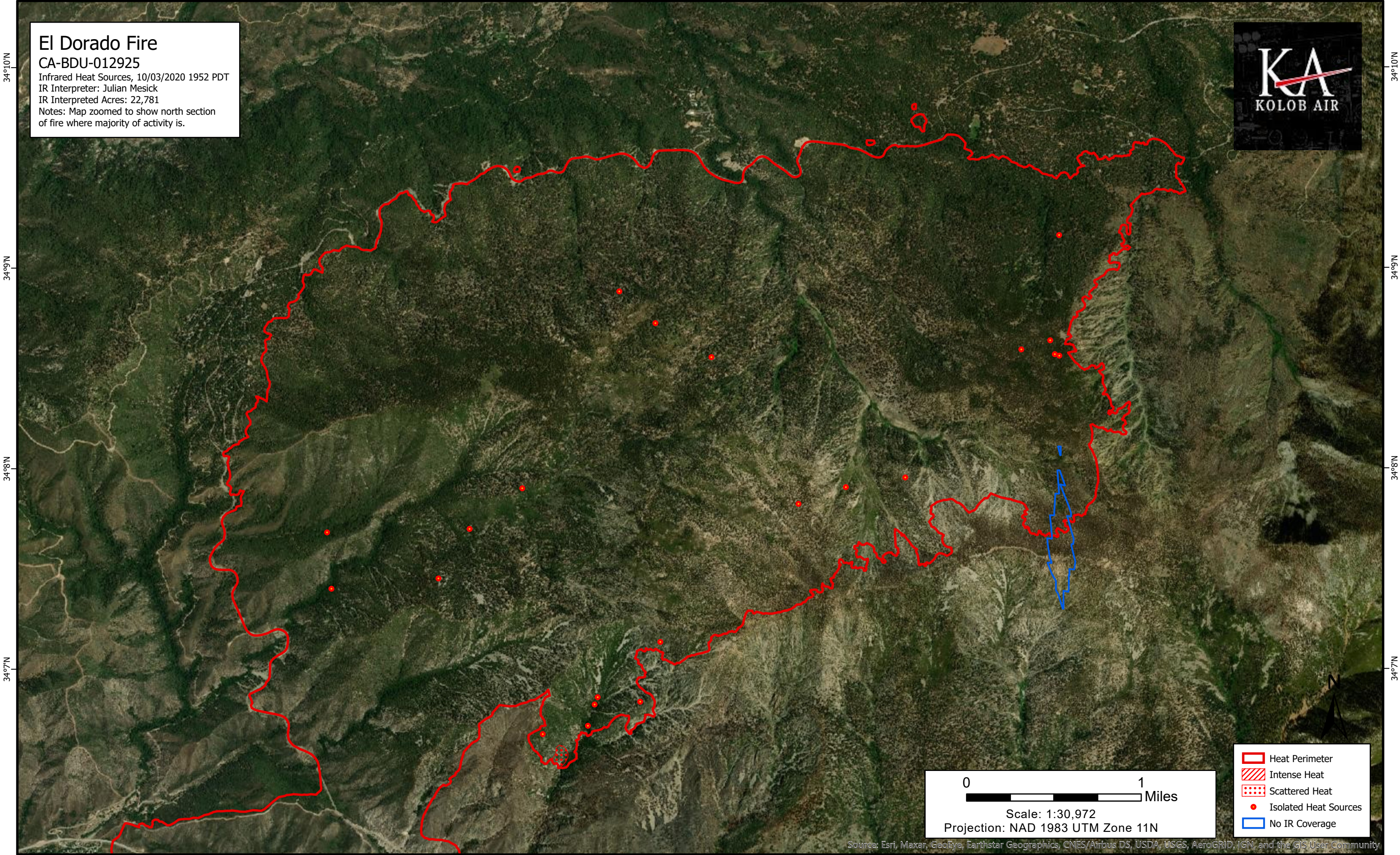


117°W 116°59'W 116°58'W 116°57'W 116°56'W 116°55'W 116°54'W 116°53'W

El Dorado Fire
CA-BDU-012925
Infrared Heat Sources, 10/03/2020 1952 PDT
IR Interpreter: Julian Mesick
IR Interpreted Acres: 22,781
Notes: Map zoomed to show north section
of fire where majority of activity is.



34°10'N

34°9'N

34°8'N

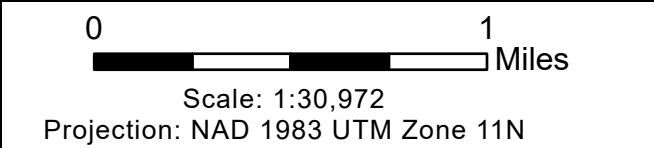
34°7'N

34°10'N

34°9'N

34°8'N

34°7'N



- Heat Perimeter
- Intense Heat
- Scattered Heat
- Isolated Heat Sources
- No IR Coverage

117°W 116°59'W 116°58'W 116°57'W 116°56'W 116°55'W 116°54'W 116°53'W

Source: Esri, Maxar, GeoEye, Earthstar Geographics, CNES/Airbus DS, USDA, USGS, AeroGRID, IGN, and the GIS User Community