

118°33'W

118°32'W

118°31'W

118°30'W

118°29'W



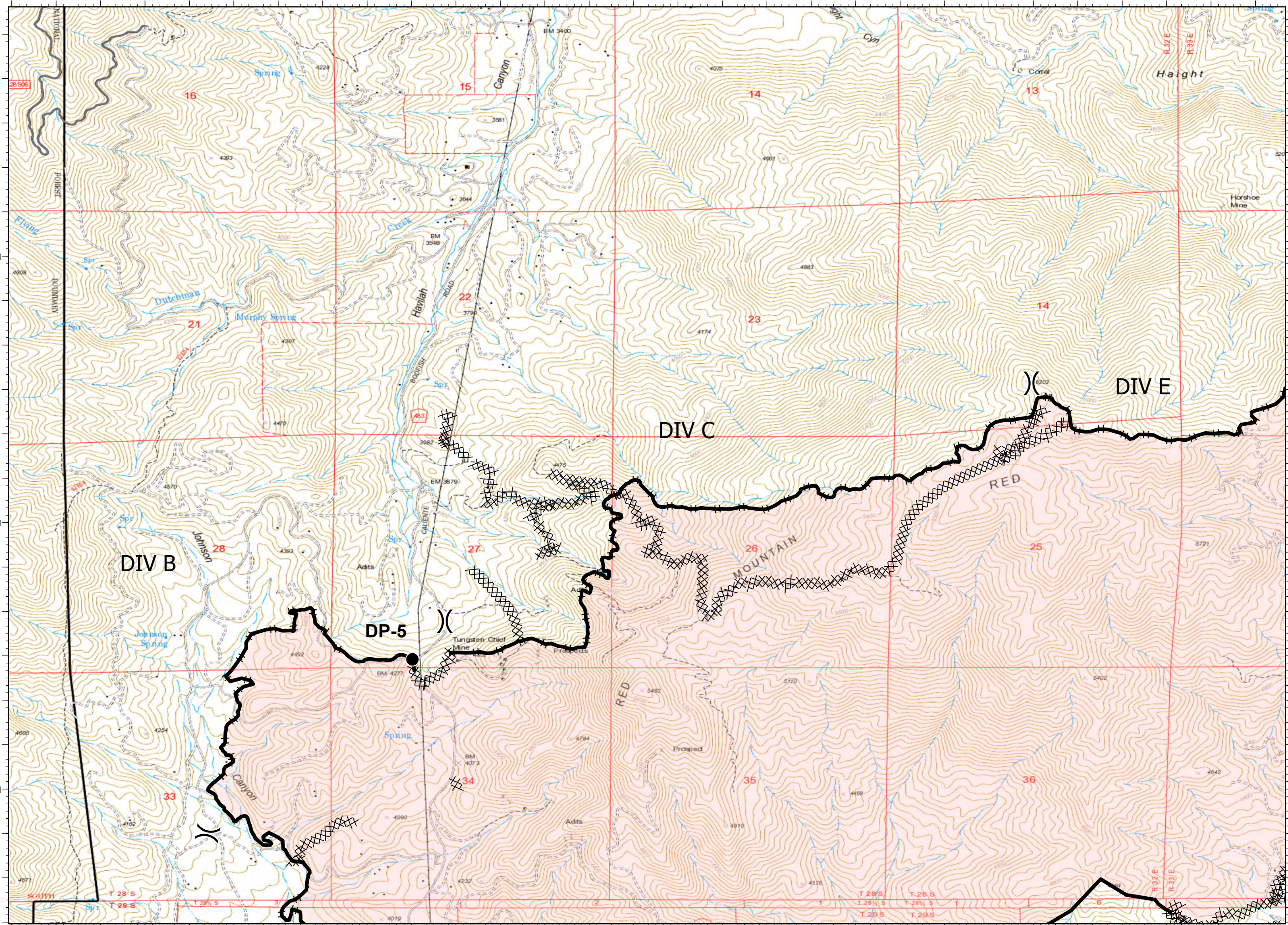
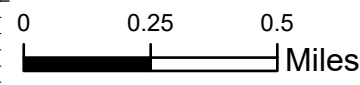
Layer2

- Drop Point
-) (Division Break
- Contained Line
- XX XX Completed Dozer Line
- H · Completed Hand Line

Layer

Category

- FSB Forward Supply Base
- RSA Remote Sleeping Area



118°28'W

118°27'W

118°26'W

118°25'W

35°30'N

35°30'N

35°29'N

35°29'N

35°28'N

35°28'N

35°27'N

35°27'N

118°28'W

118°27'W

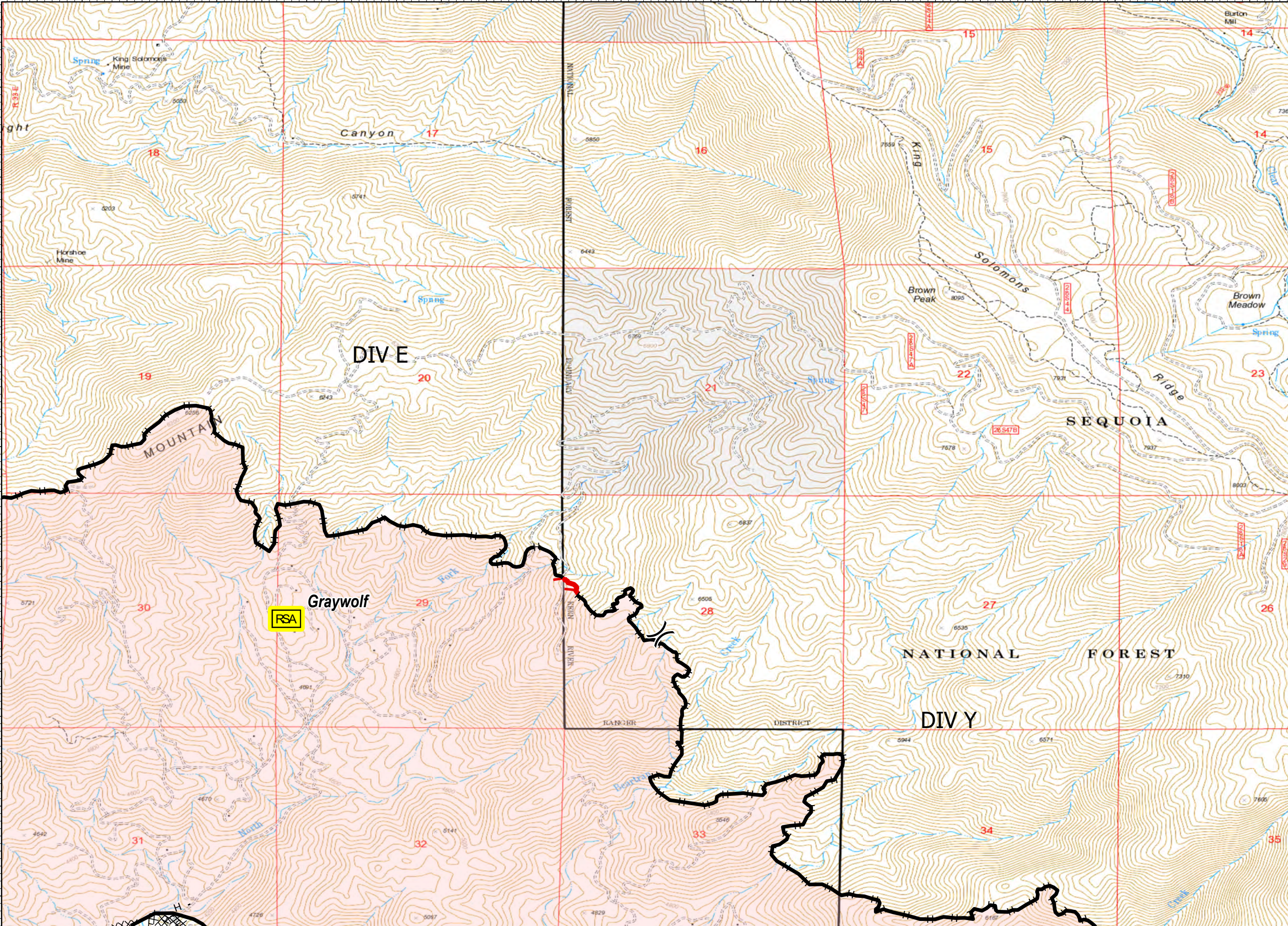
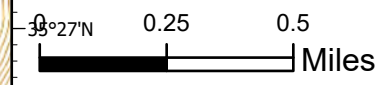
118°26'W

118°25'W



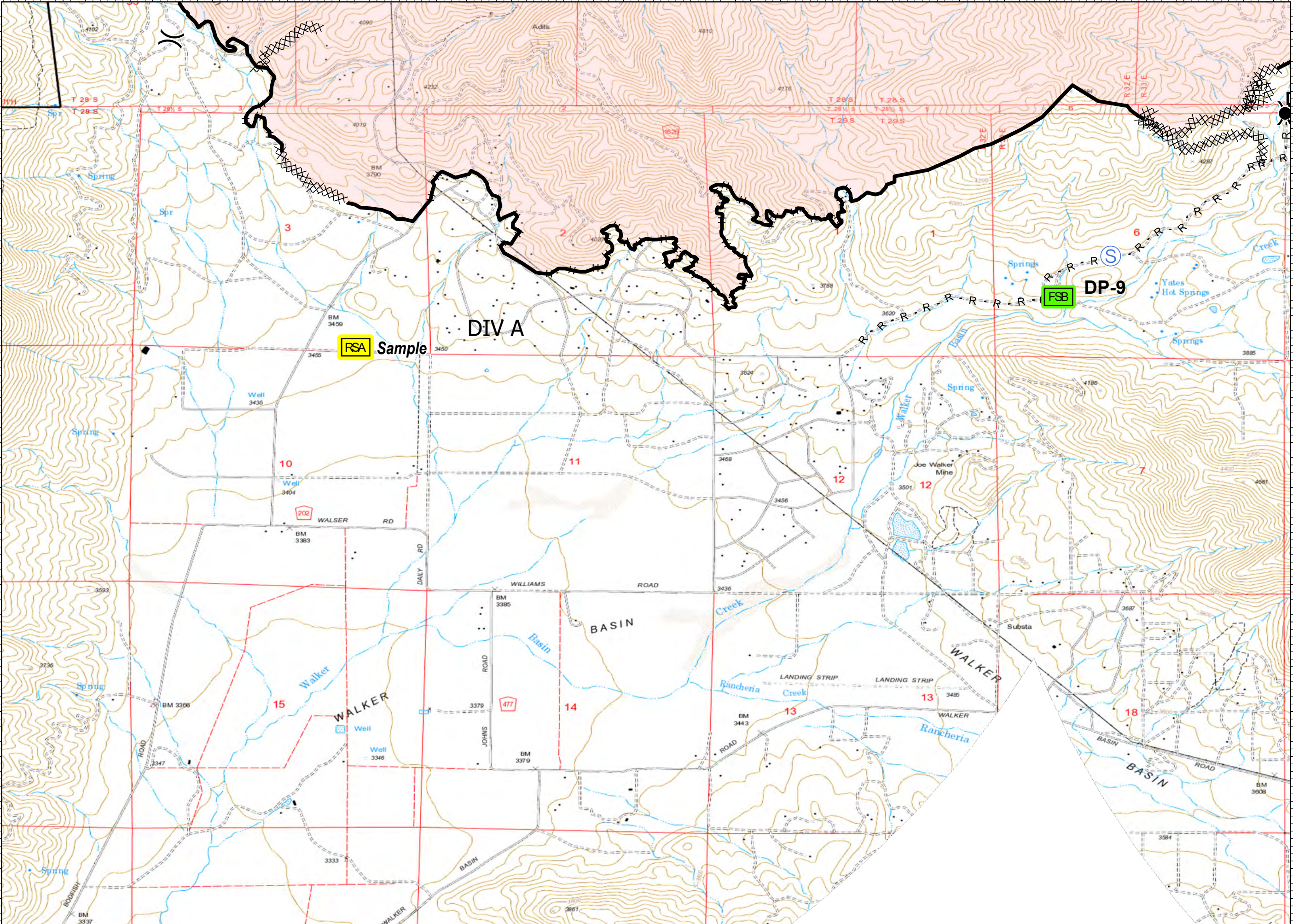
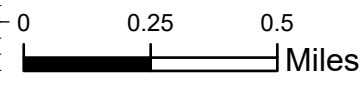
- Layer2
- Other
 - ⌋ Division Break
 - ▬ Uncontrolled Fire Edge
 - ▬ Contained Line
 - ⊗⊗ Completed Dozer Line
 - H · Completed Hand Line

- Layer
- Category
- ▭ FSB Forward Supply Base





- Layer2
- Drop Point
 - Ⓢ Staging Area
 - Other
 -) Division Break
 - Contained Line
 - ⊗⊗ Completed Dozer Line
 - H · Completed Hand Line
 - R · Road as Completed Line





- Layer2
- Drop Point
 - Ⓜ Water Source
 - Other
 -) Division Break
 - Contained Line
 - ⊗⊗ Completed Dozer Line
 - H · Completed Hand Line
 - R · Road as Completed Line
 - Planned Fire Line

