

118°33'W

118°32'W

118°31'W

118°30'W

118°29'W

35°29'N

35°29'N

35°28'N

35°28'N

35°27'N

35°27'N



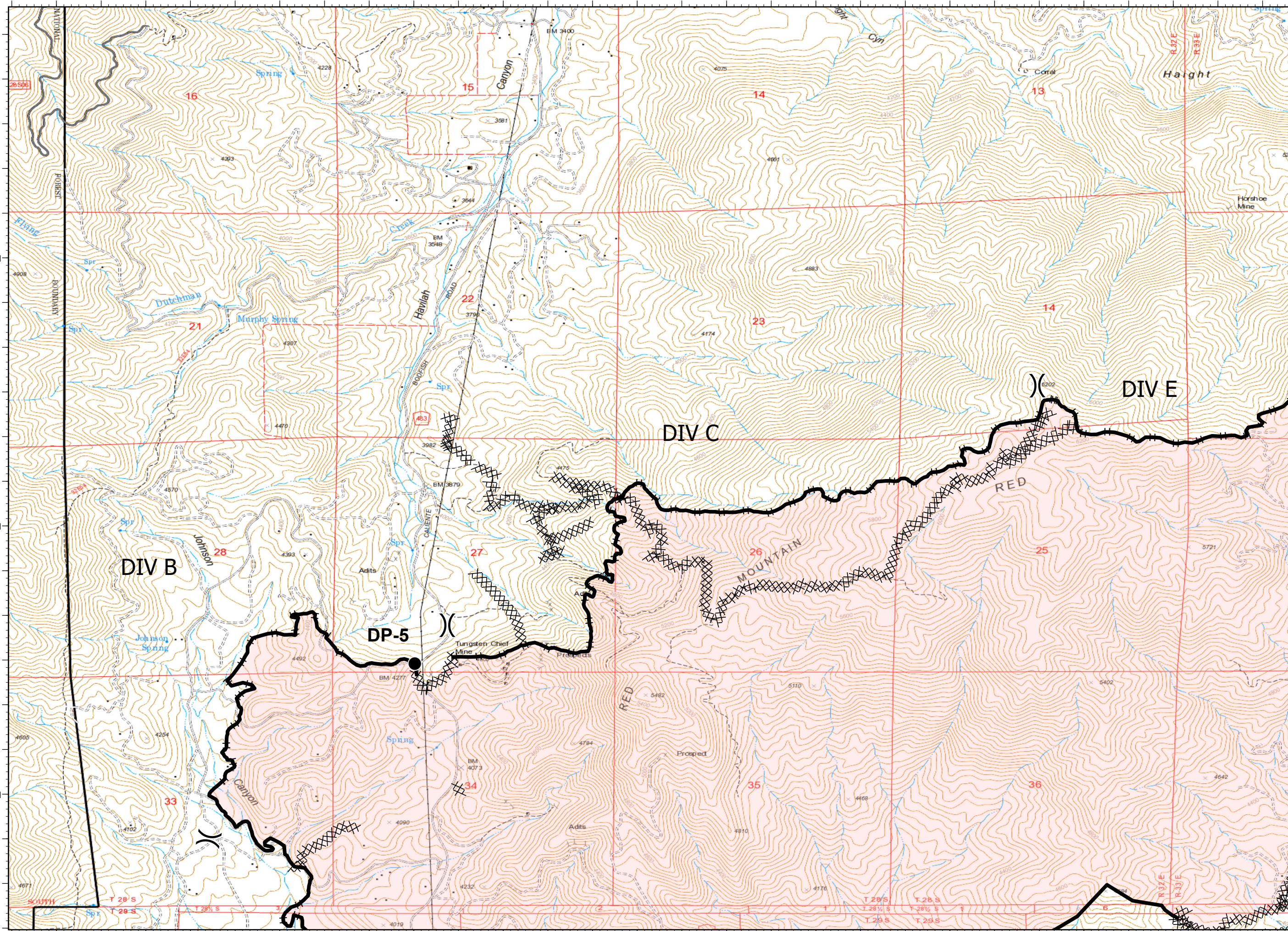
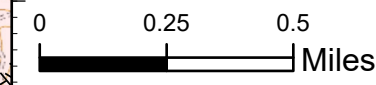
Layer2

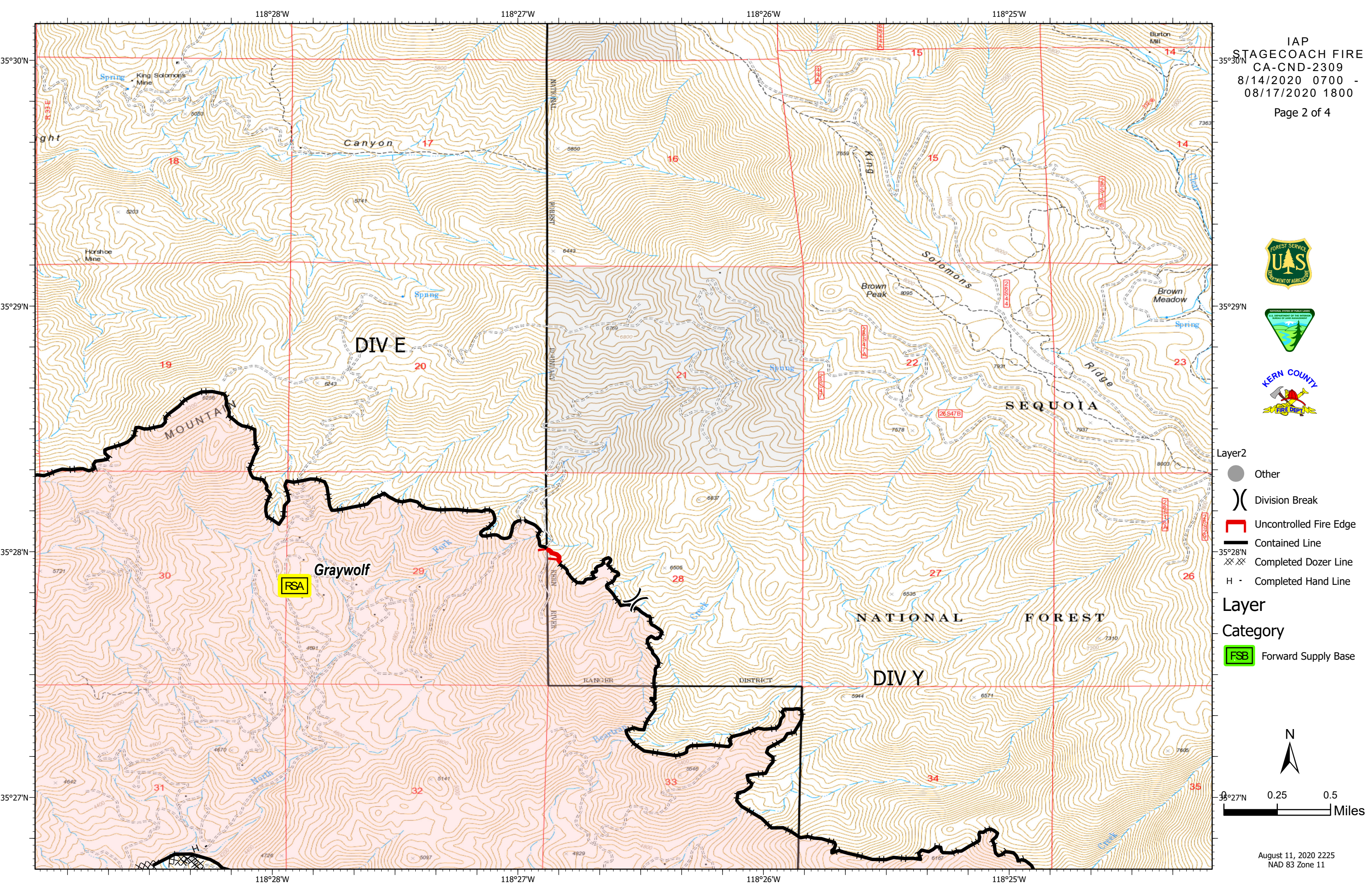
- Drop Point
-) (Division Break
- Contained Line
- ×× Completed Dozer Line
- H · Completed Hand Line

Layer

Category

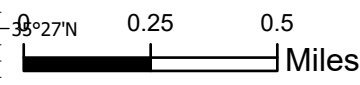
- FSB Forward Supply Base
- RSA Remote Sleeping Area

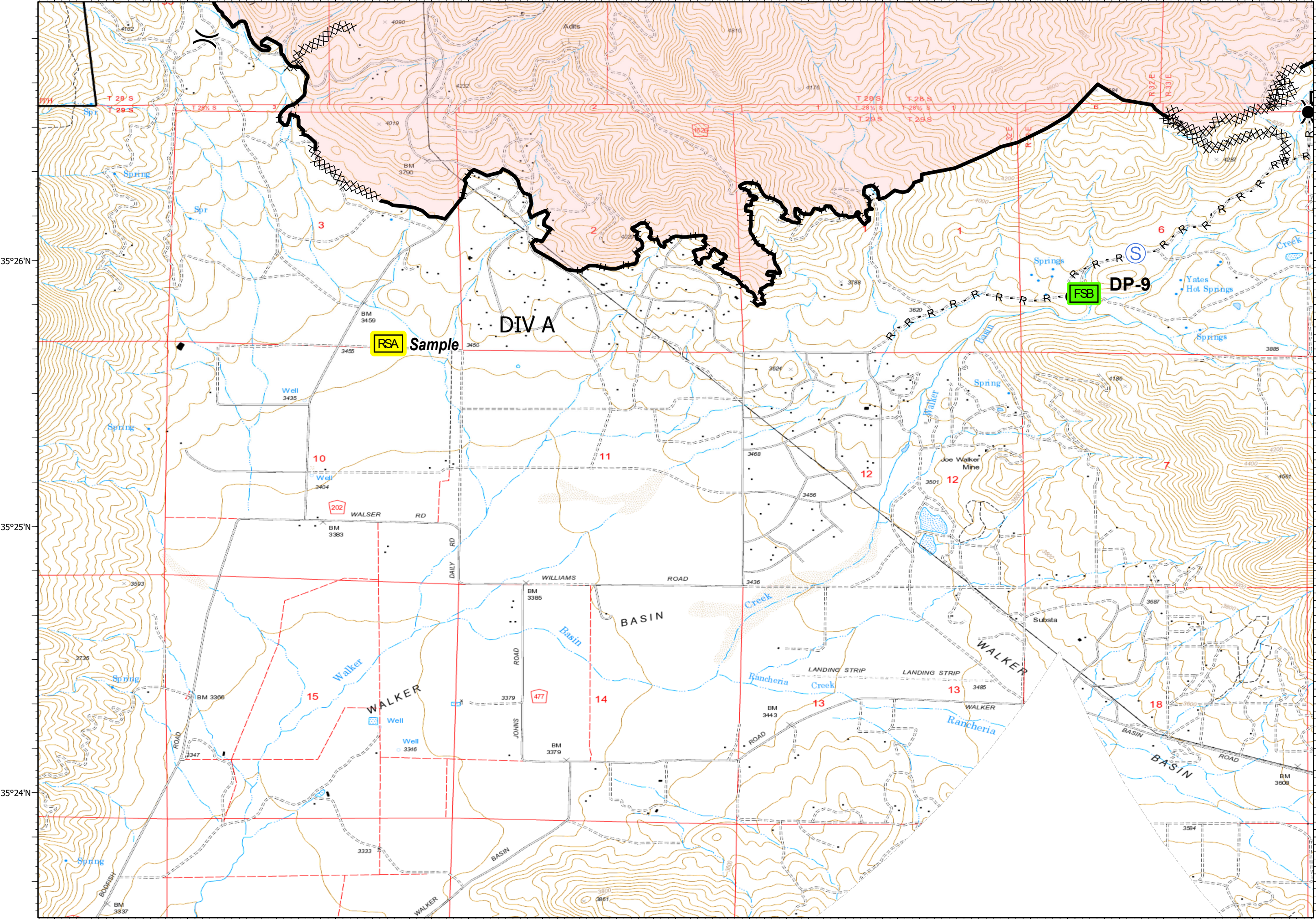




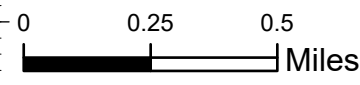
- Layer2
- Other
 -) Division Break
 - ▭ Uncontrolled Fire Edge
 - ▬ Contained Line
 - XX XX Completed Dozer Line
 - H · Completed Hand Line

- Layer
 Category
- ▭ FSB Forward Supply Base





- Layer2
- Drop Point
 - Ⓢ Staging Area
 - Other
 -) Division Break
 - Contained Line
 - ⊗⊗ Completed Dozer Line
 - H · Completed Hand Line
 - R · Road as Completed Line



35°26'N

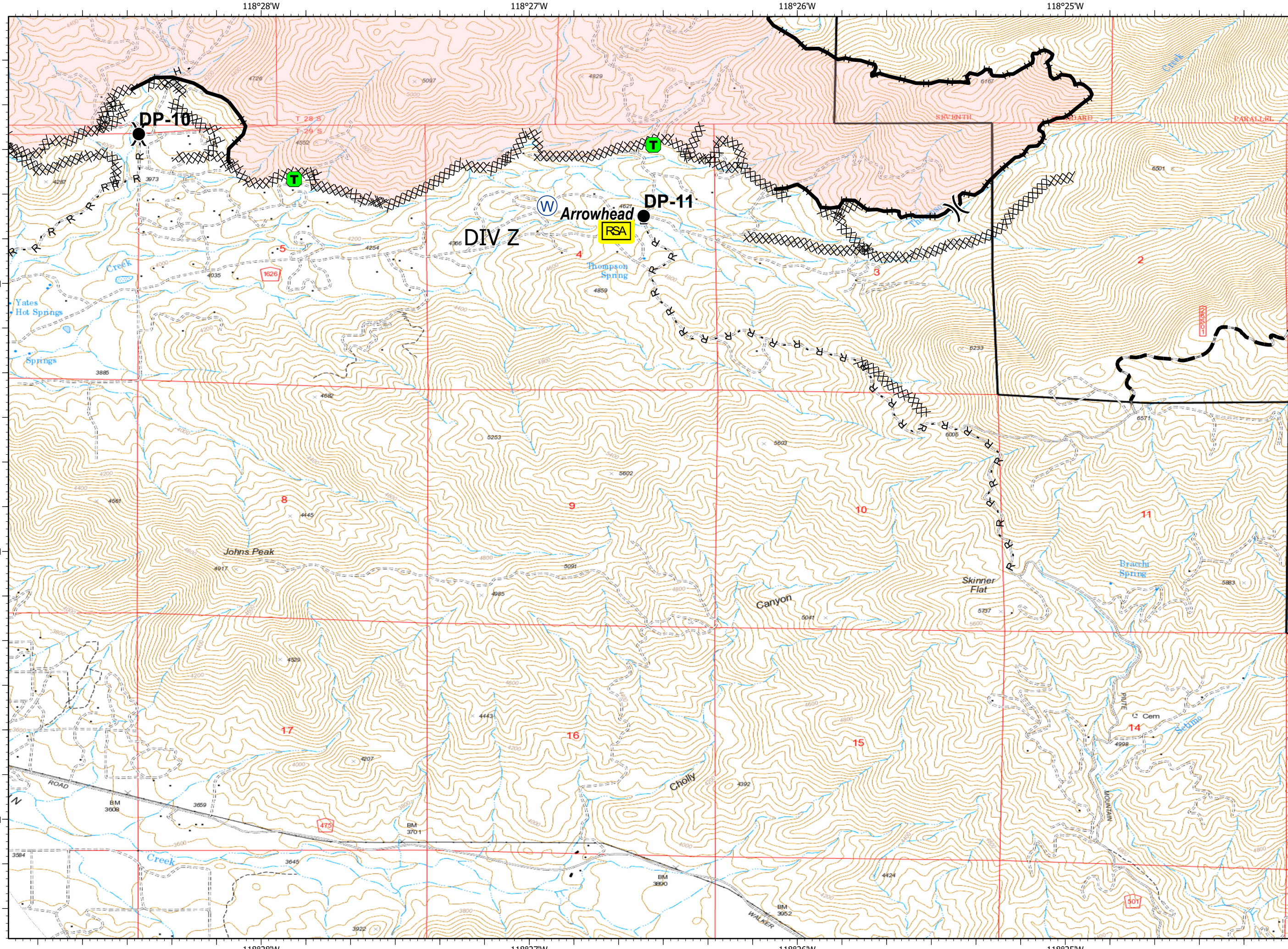
35°26'N

35°25'N

35°25'N

35°24'N

35°24'N



- Layer2
- Clean Up Area
 - Drop Point
 - Water Source
 - Other
 - Division Break
 - Contained Line
 - Completed Dozer Line
 - Completed Hand Line
 - Road as Completed Line
 - Planned Fire Line

