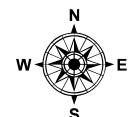


IAP

9/8/2020

17,345 ac. as of
9/7/2020 18:00

- ◆ Dip Site
- Drop Point
- Ⓟ Incident Base
- ▣ Incident Command Post
- Ⓢ Staging Area
-) (Division Break
- || Branch Break
- ▬ Uncontrolled Fire Edge
- ⊗ Completed Dozer Line
- H Completed Hand Line
- ⊗ Proposed Dozer Line
- ▭ Wildfire Daily Fire Perimeter
- ▭ Cleveland National Forest
- ▭ Wilderness
- ▭ IAP Grid Index

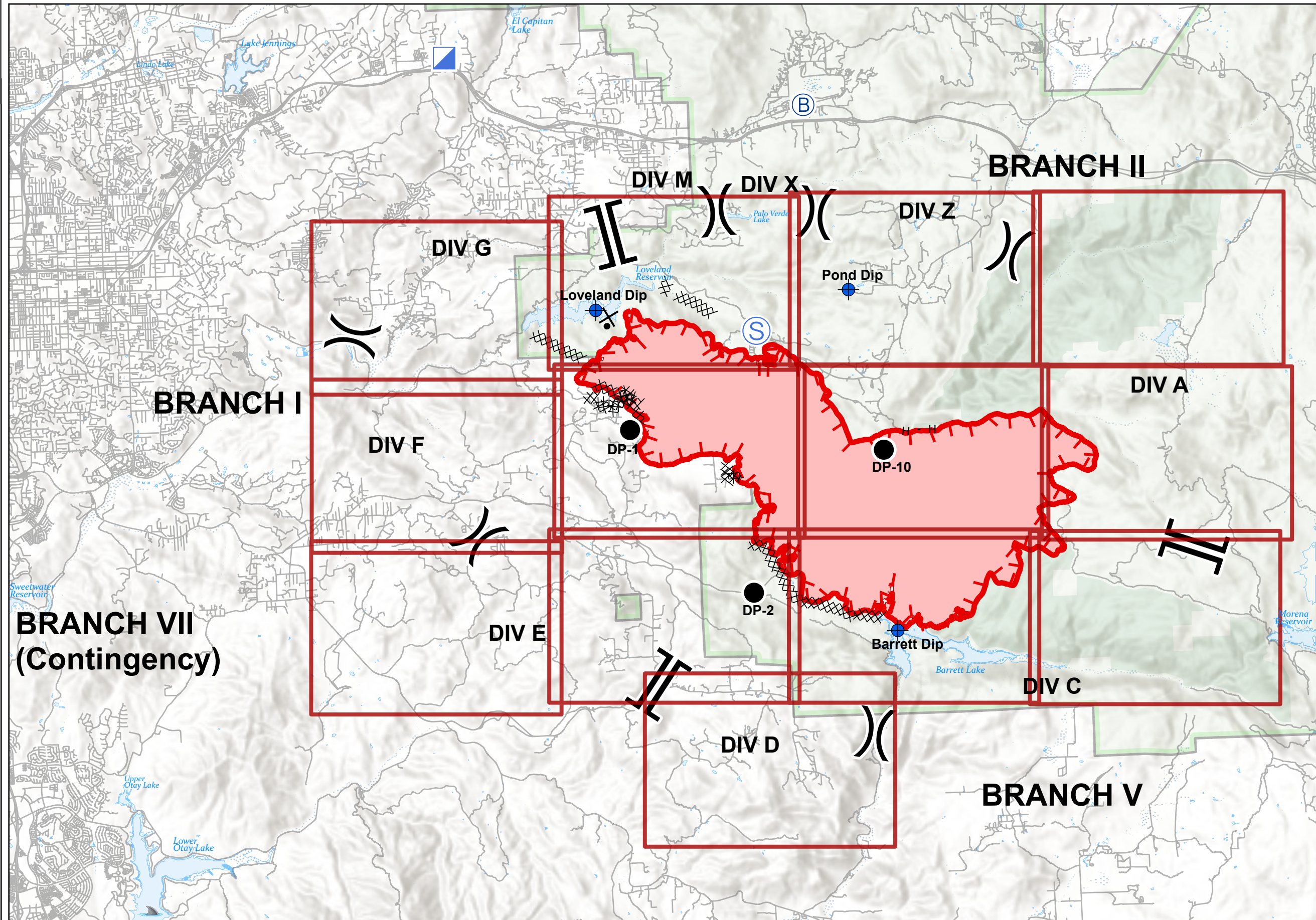


0 0.5 1 2 Miles

North American 1983 Datum. Lat/Long Grid

Valley Fire

CA-CNF-002833

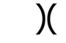






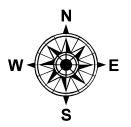
IAP

9/8/2020

17,345 ac. as of
9/7/2020 18:00

Page 1
Branch I
Division F, G

-  Division Break
-  Completed Dozer Line
-  Powerlines
-  Cleveland National Forest
-  IAP Grid Index

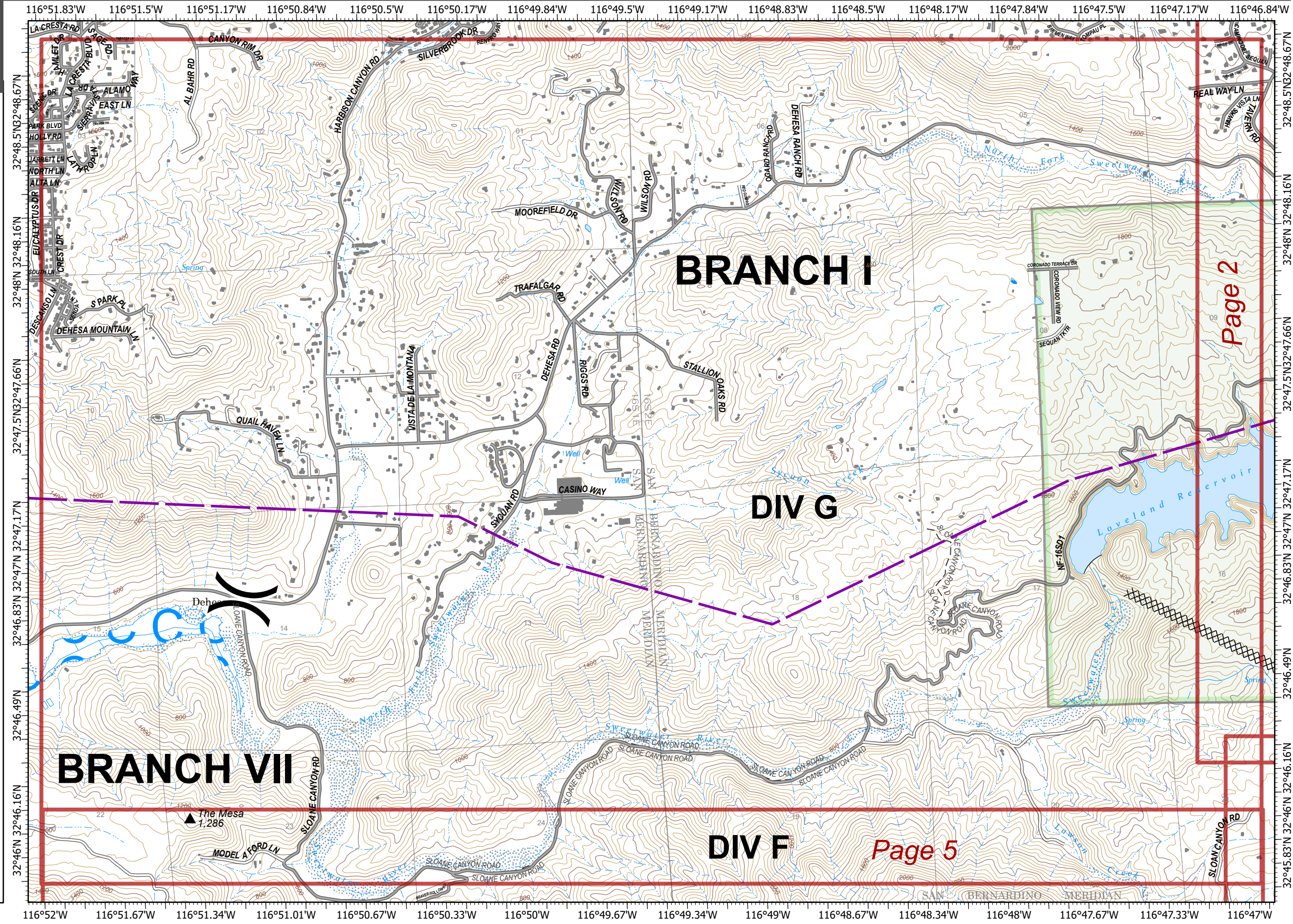


0 0.13 0.25 0.5 Miles

North American 1983 Datum. LatLong Grid

Valley Fire

CA-CNF-002833



Page 2

Page 5

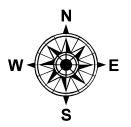
IAP

9/8/2020

17,345 ac. as of
9/7/2020 18:00

Page 2
Branch I, II
Divisions G, M, X

- Dip Site
- Staging Area
- Division Break
- Branch Break
- Uncontrolled Fire Edge
- Completed Dozer Line
- Proposed Dozer Line
- Powerlines
- Wildfire Daily Fire Perimeter
- Cleveland National Forest
- IAP Grid Index

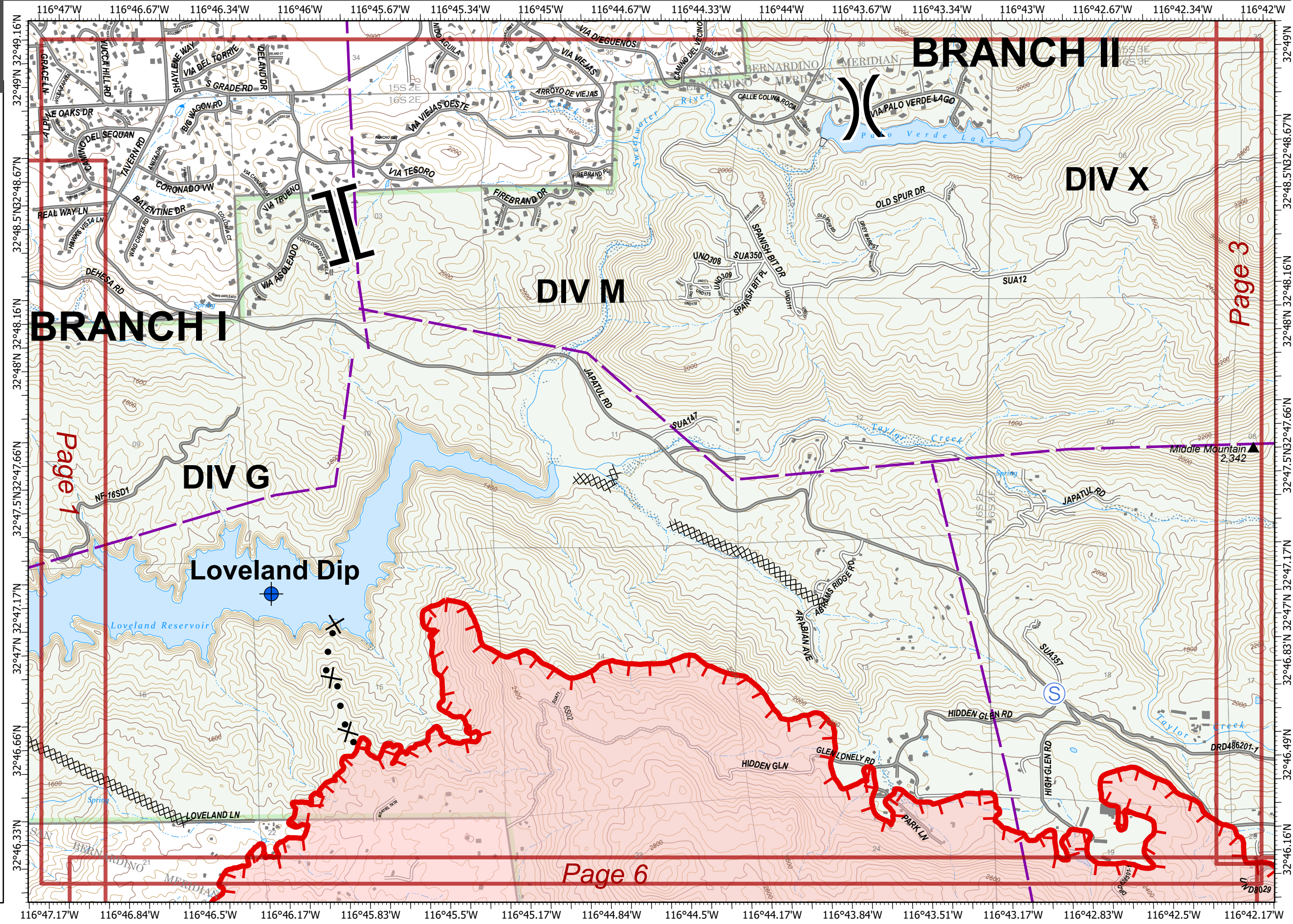


0 0.13 0.25 0.5 Miles

North American 1983 Datum. LatLong Grid

Valley Fire

CA-CNF-002833



Page 3









Page 6

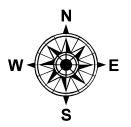
IAP

9/8/2020

17,345 ac. as of
9/7/2020 18:00

Page 3
Branch II
Division Z

-  Dip Site
-  Division Break
-  Uncontrolled Fire Edge
-  Powerlines
-  Wildfire Daily Fire Perimeter
-  Cleveland National Forest
-  Wilderness
-  IAP Grid Index

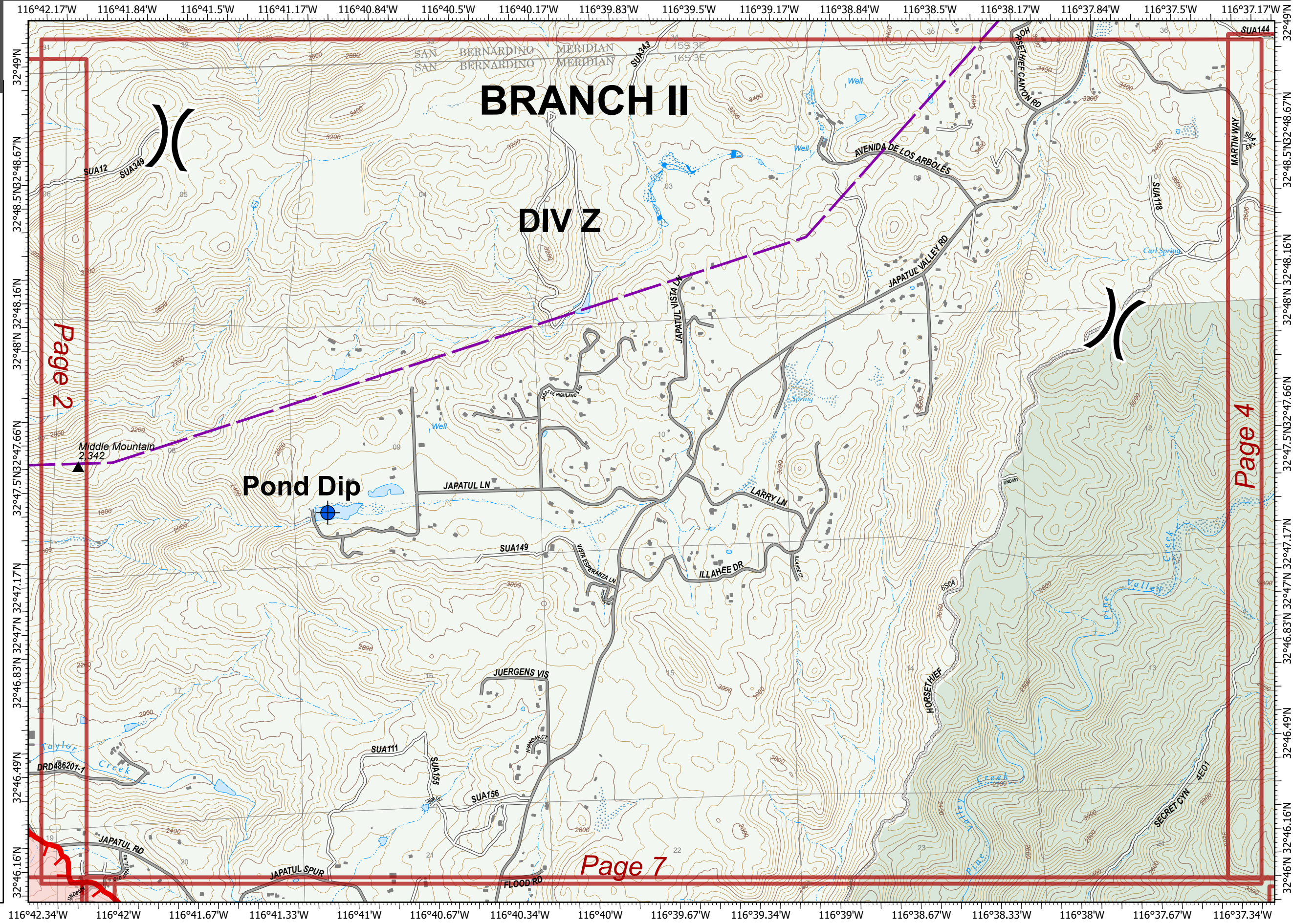


0 0.13 0.25 0.5 Miles

North American 1983 Datum. LatLong Grid

Valley Fire

CA-CNF-002833






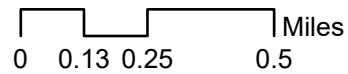
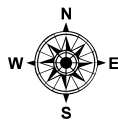
IAP

9/8/2020

17,345 ac. as of
9/7/2020 18:00

Page 4
Branch II
Division A

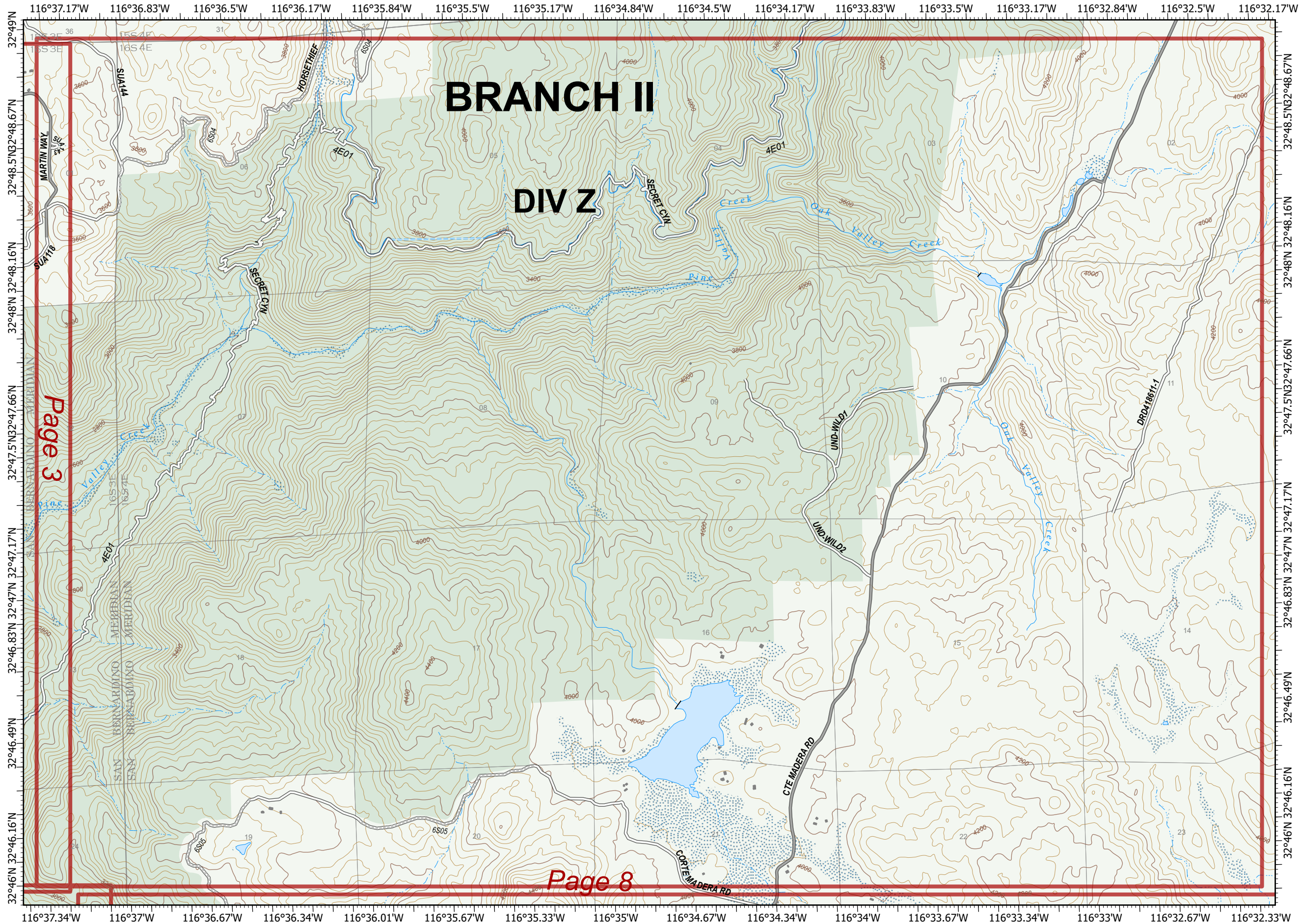
-  Cleveland National Forest
-  Wilderness
-  IAP Grid Index



North American 1983 Datum. LatLong Grid

Valley Fire

CA-CNF-002833



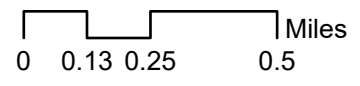
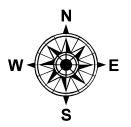
IAP

9/8/2020

17,345 ac. as of
9/7/2020 18:00

Page 6
Branch I
Division G, F

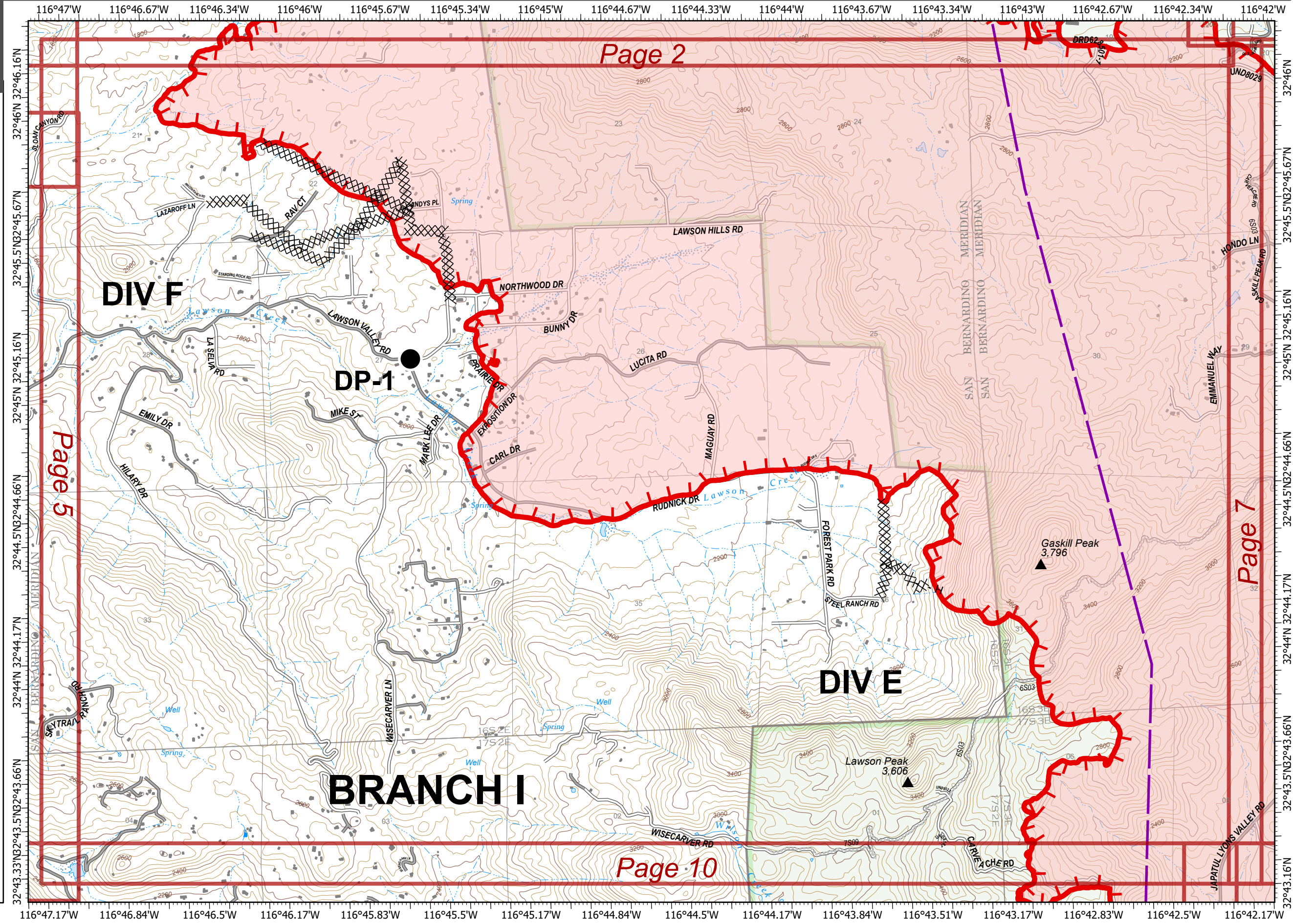
- Drop Point
- ▬ Uncontrolled Fire Edge
- ▨ Completed Dozer Line
- H · Completed Hand Line
- Powerlines
- ▭ Wildfire Daily Fire Perimeter
- ▭ Cleveland National Forest
- ▭ IAP Grid Index



North American 1983 Datum. LatLong Grid

Valley Fire

CA-CNF-002833



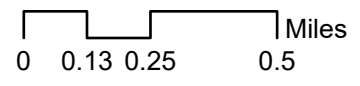
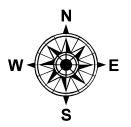
IAP

9/8/2020

17,345 ac. as of
9/7/2020 18:00

Page 7
Branch II
Division Z, A, C

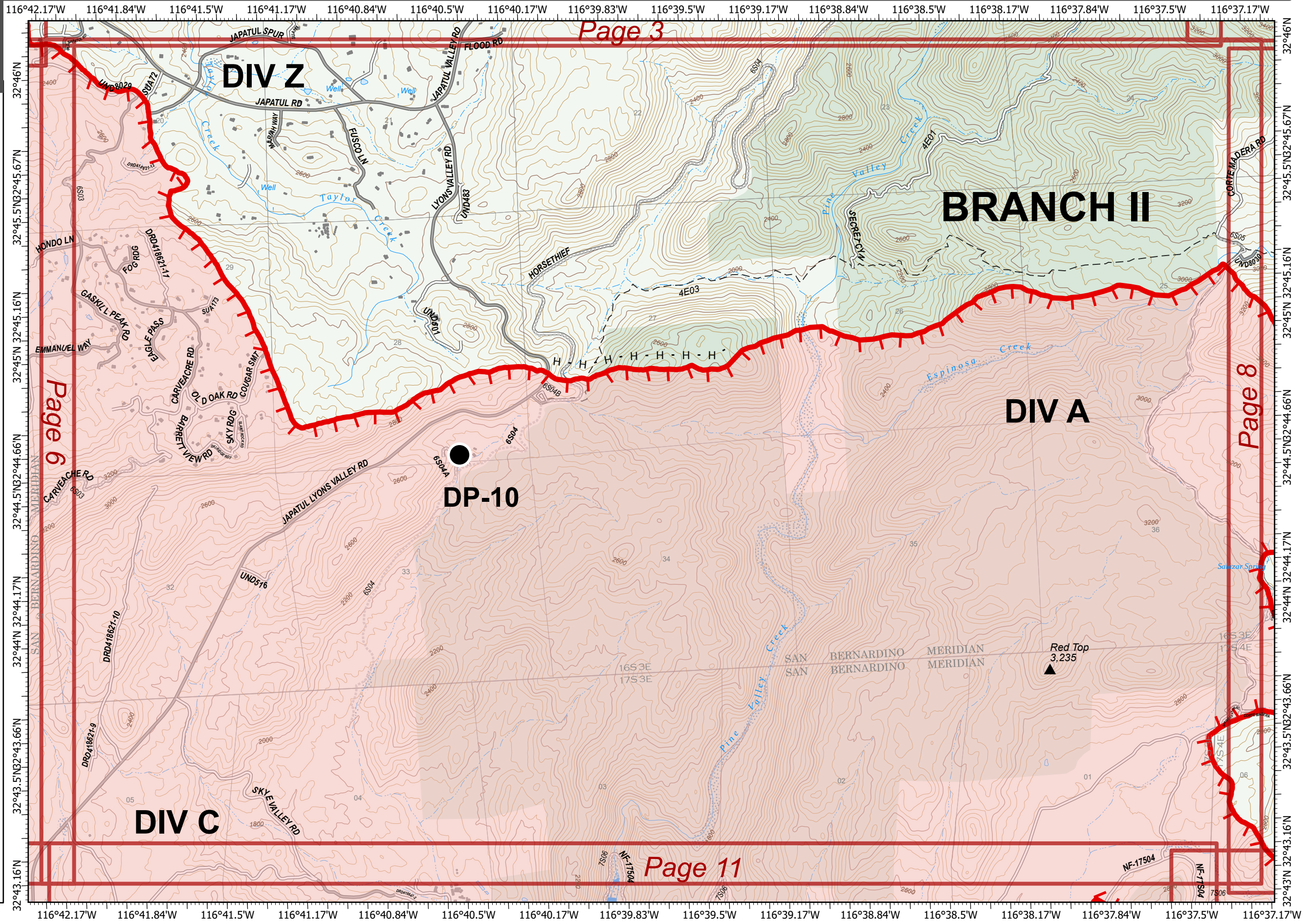
- Drop Point
- ▬ Uncontrolled Fire Edge
- H · Completed Hand Line
- ▭ Wildfire Daily Fire Perimeter
- ▭ Cleveland National Forest
- ▭ Wilderness
- ▭ IAP Grid Index



North American 1983 Datum. LatLong Grid

Valley Fire

CA-CNF-002833



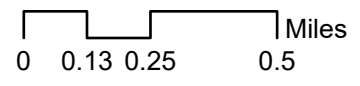
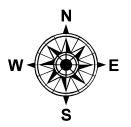
IAP

9/8/2020

17,345 ac. as of
9/7/2020 18:00

Page 8
Branch V
Division A

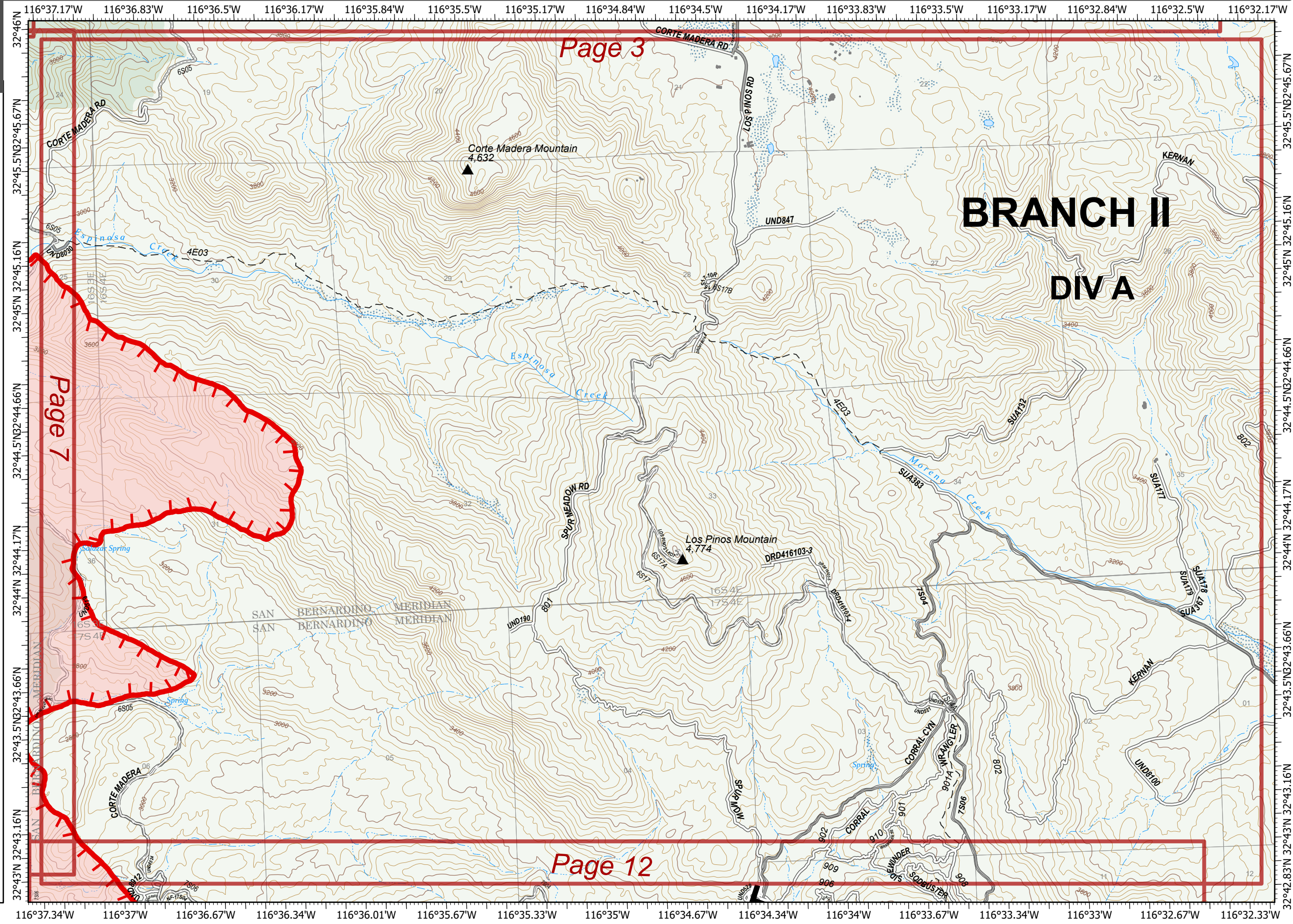
- II Branch Break
- Uncontrolled Fire Edge
- Wildfire Daily Fire Perimeter
- Cleveland National Forest
- Wilderness
- IAP Grid Index



North American 1983 Datum. LatLong Grid

Valley Fire

CA-CNF-002833



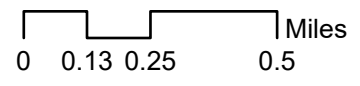
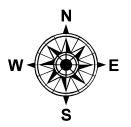
IAP

9/8/2020

17,345 ac. as of
9/7/2020 18:00

Page 9
Branch I
Division E

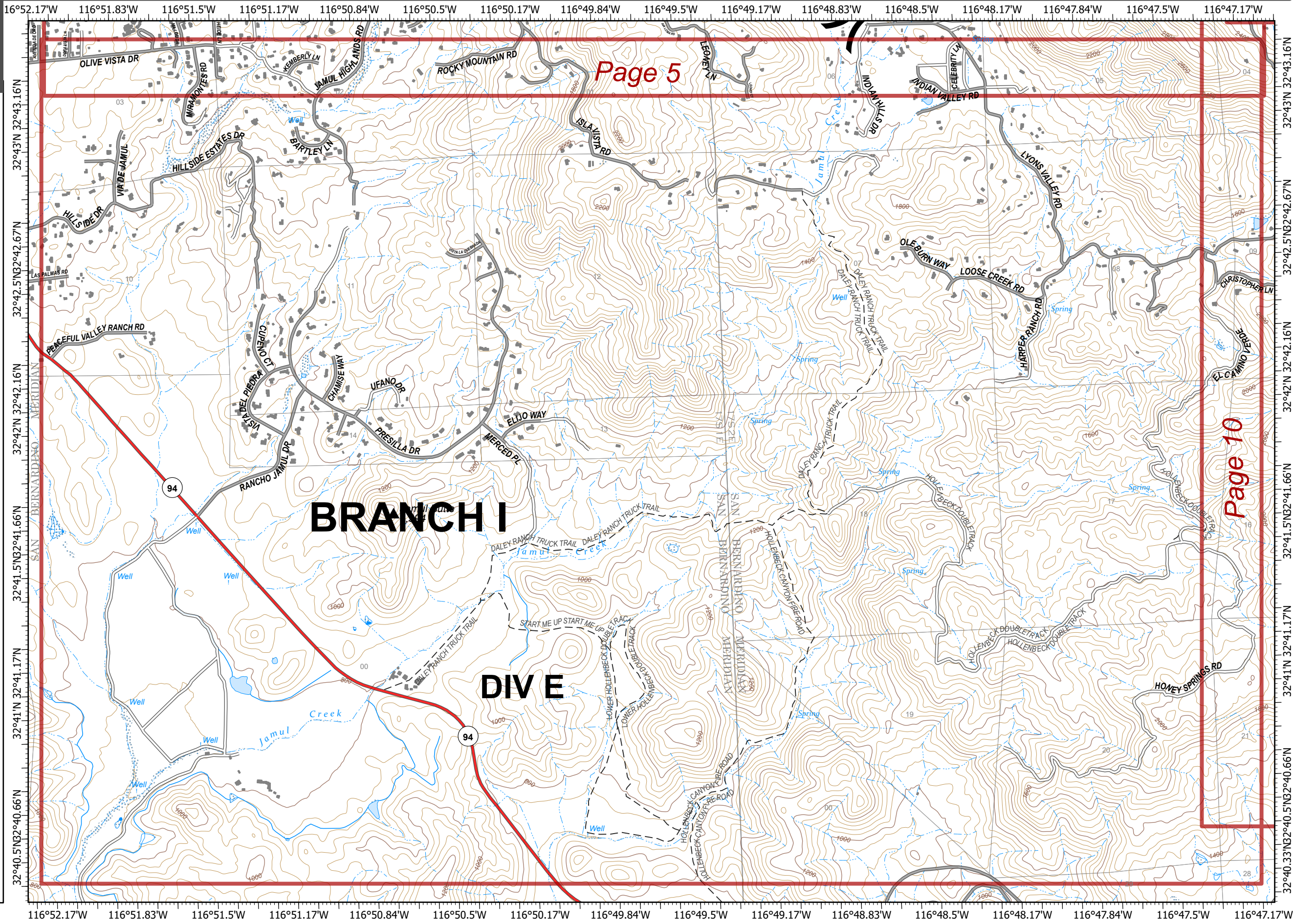
⌘ Division Break
▭ IAP Grid Index



North American 1983 Datum. LatLong Grid

Valley Fire

CA-CNF-002833



Page 5

Page 10

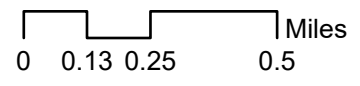
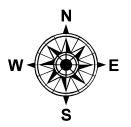
IAP

9/8/2020

17,345 ac. as of
9/7/2020 18:00

Page 10
Branch I, V
Division D, E

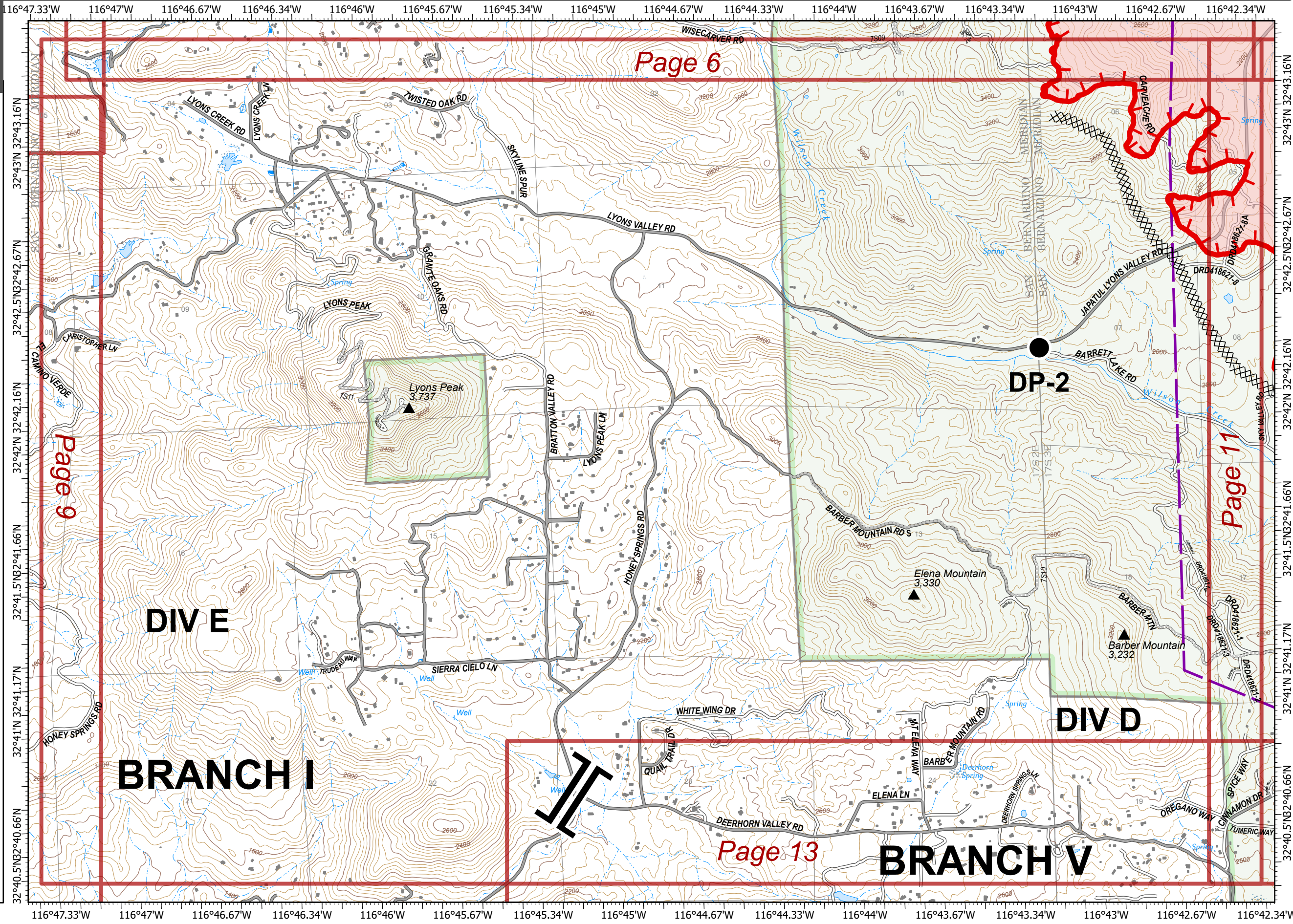
- Drop Point
- || Branch Break
- ▬ Uncontrolled Fire Edge
- ××× Completed Dozer Line
- Powerlines
- ▭ Wildfire Daily Fire Perimeter
- ▭ Cleveland National Forest
- ▭ IAP Grid Index



North American 1983 Datum. LatLong Grid

Valley Fire

CA-CNF-002833



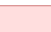
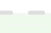


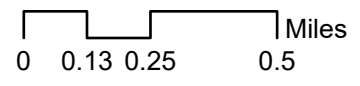
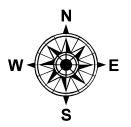
IAP

9/8/2020

17,345 ac. as of
9/7/2020 18:00

Page 11
Branch V
Division C, D

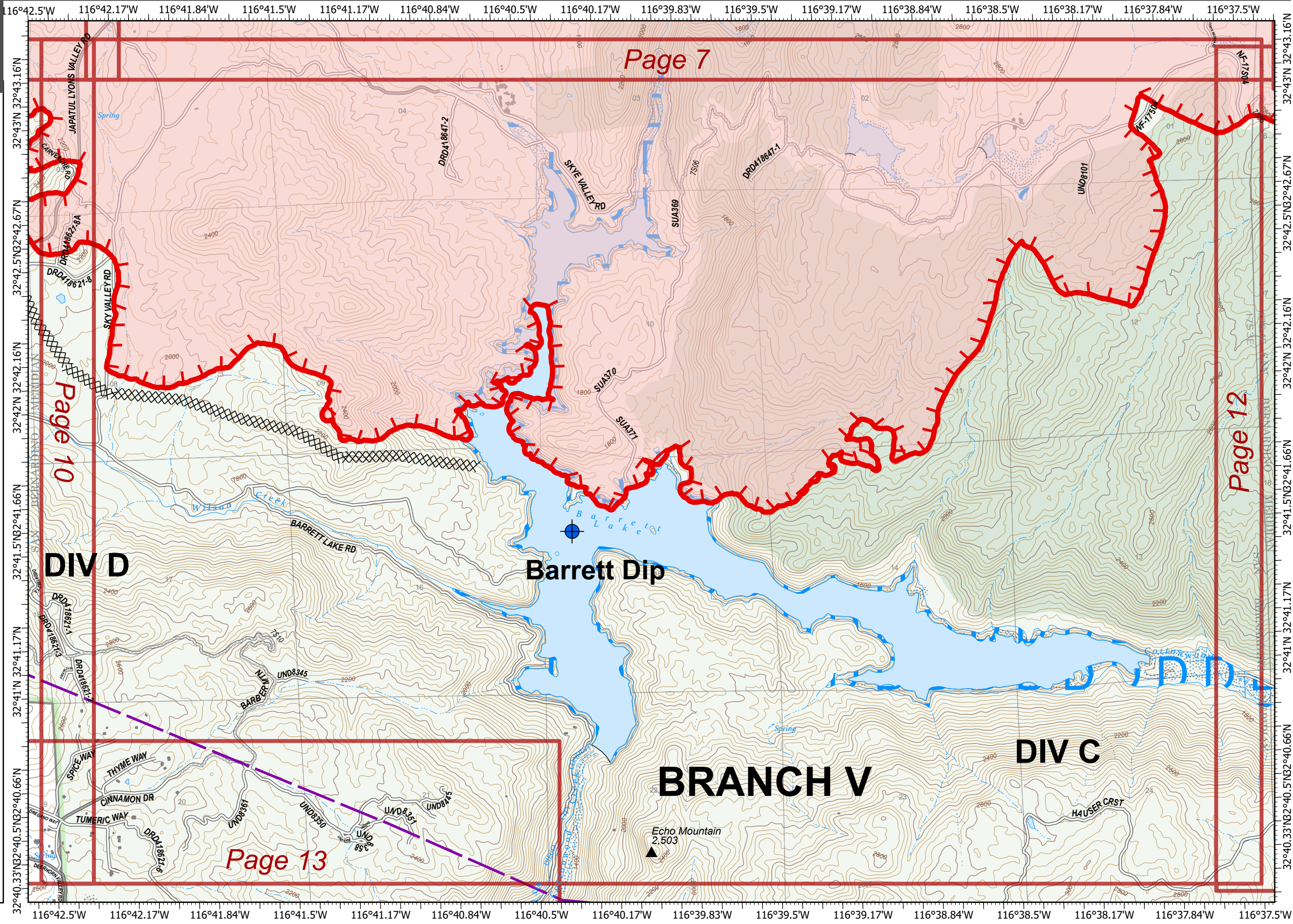
-  Dip Site
-  Uncontrolled Fire Edge
-  Completed Dozer Line
-  Powerlines
-  Wildfire Daily Fire Perimeter
-  Cleveland National Forest
-  Wilderness
-  IAP Grid Index



North American 1983 Datum. LatLong Grid

Valley Fire

CA-CNF-002833



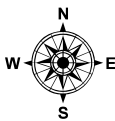
IAP

9/8/2020

17,345 ac. as of
9/7/2020 18:00

Page 12
Branch V
Division A

- II Branch Break
- Uncontrolled Fire Edge
- Powerlines
- Wildfire Daily Fire Perimeter
- Cleveland National Forest
- Wilderness
- IAP Grid Index

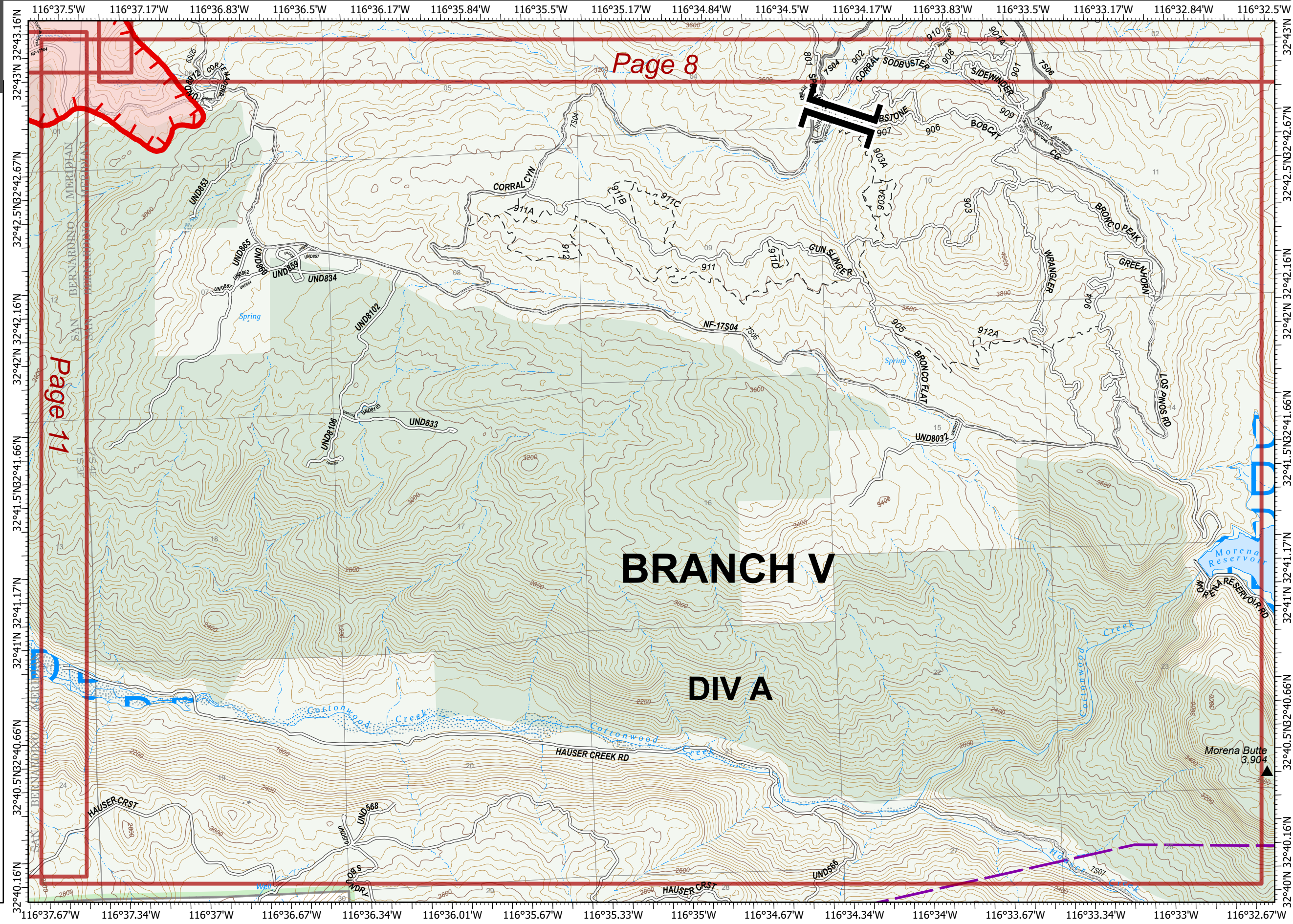


0 0.13 0.25 0.5 Miles

North American 1983 Datum. LatLong Grid

Valley Fire

CA-CNF-002833



Page 8

Page 11

BRANCH V

DIV A

Morena Butte
3,904

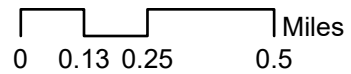
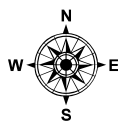
IAP

9/8/2020

17,345 ac. as of
9/7/2020 18:00

Page 13
Branch V
Division D

- ⌘ Division Break
- ⌘ Branch Break
- Powerlines
- Cleveland National Forest
- IAP Grid Index



North American 1983 Datum. LatLong Grid

Valley Fire

CA-CNF-002833

