

IAP

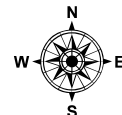
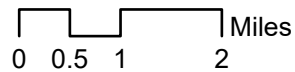
9/9/2020 19:00

17,665 ac. as of
9/9/2020 12:00

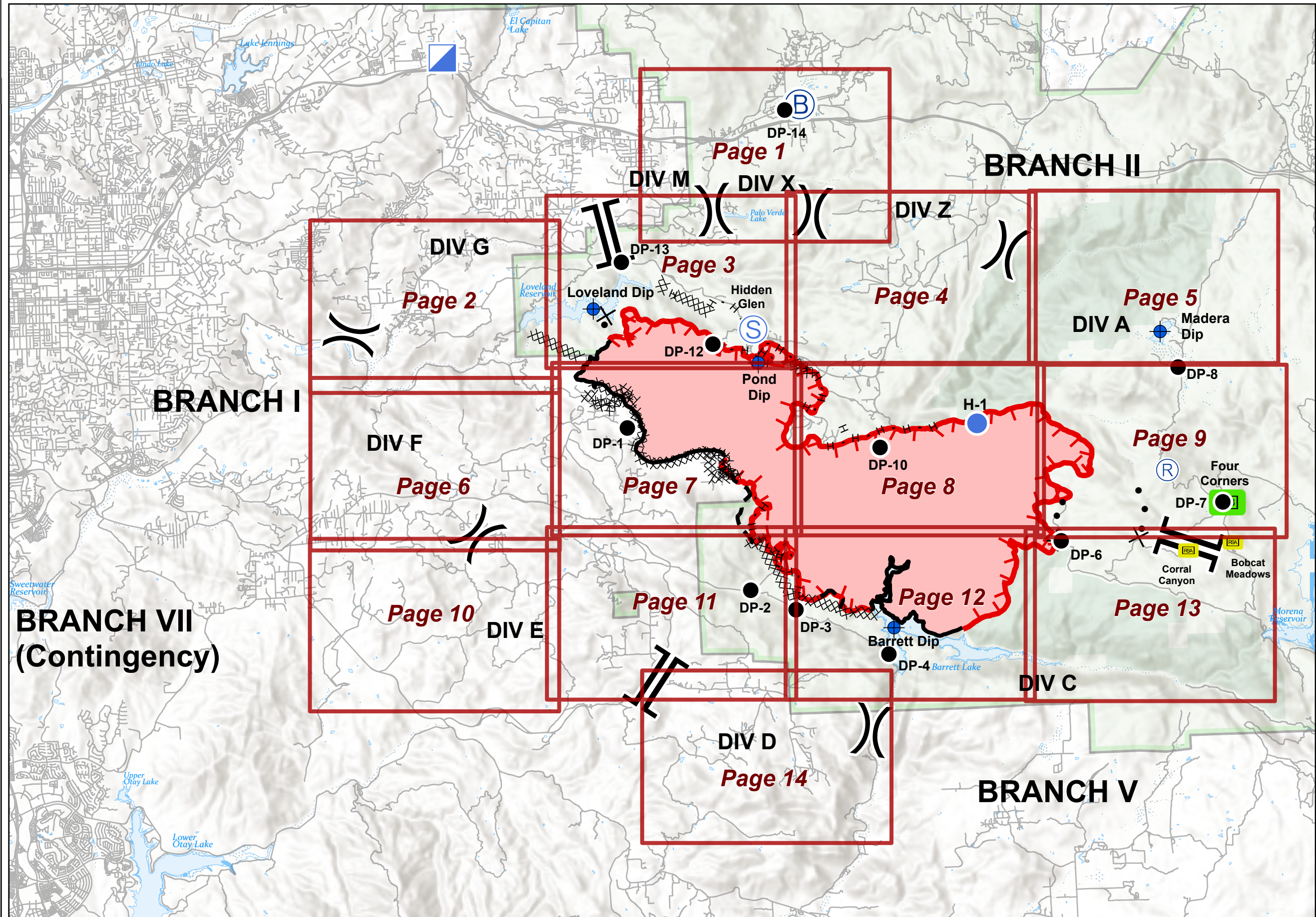
Valley Fire

CA-CNF-002833

- ◆ Dip Site
- Drop Point
- Helispot
- ⓑ Incident Base
- ▢ Incident Command Post
- Ⓡ Repeater
- ▭ Forward Supply Base
- Ⓢ Staging Area
- ▭ Remote Sleeping Area
-) (Division Break
- || Branch Break
- Uncontrolled Fire Edge
- Contained Line
- ⊗ Completed Dozer Line
- H Completed Hand Line
- ⊗ Proposed Dozer Line
- Planned Fire Line
- ▭ Wildfire Daily Fire Perimeter
- ▭ Cleveland National Forest
- ▭ Wilderness
- ▭ IAP Grid Index



North American 1983 Datum. LatLong Grid



IAP

Valley Fire

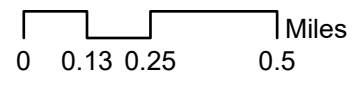
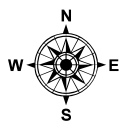
CA-CNF-002833

9/10/2020 07:00

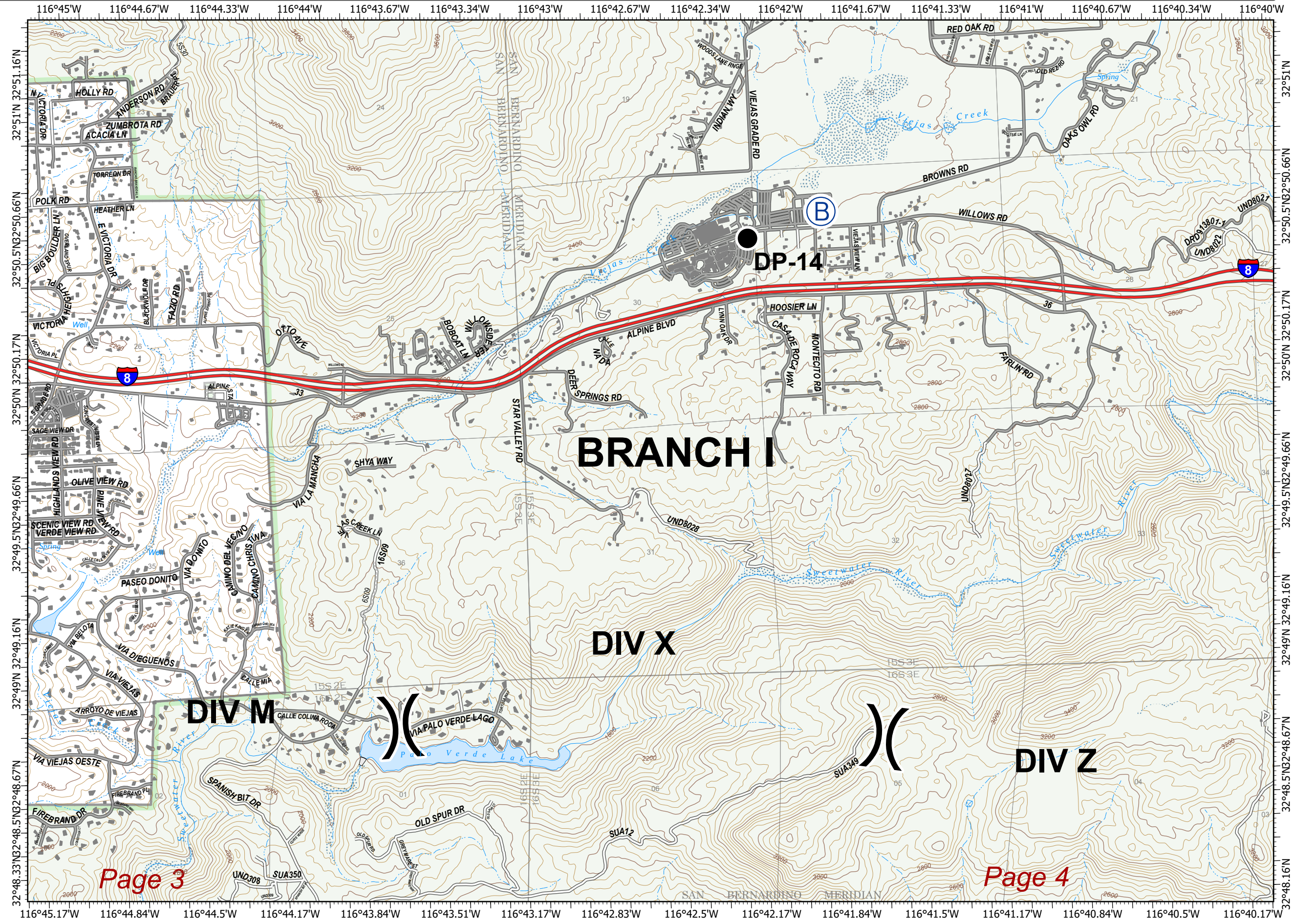
17,665 ac. as of
9/9/2020 12:00

Page 1
Branch II
Division M, X, Z

- Drop Point
- Ⓟ Incident Base
- ⌘ Division Break
- ▭ Cleveland National Forest



North American 1983 Datum. LatLong Grid



Page 3

Page 4

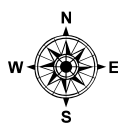
IAP

9/10/2020 07:00

17,665 ac. as of
9/9/2020 12:00

Page 2
Branch I
Division F, G

- () Division Break
- XX XX Completed Dozer Line
- Powerlines
- Cleveland National Forest

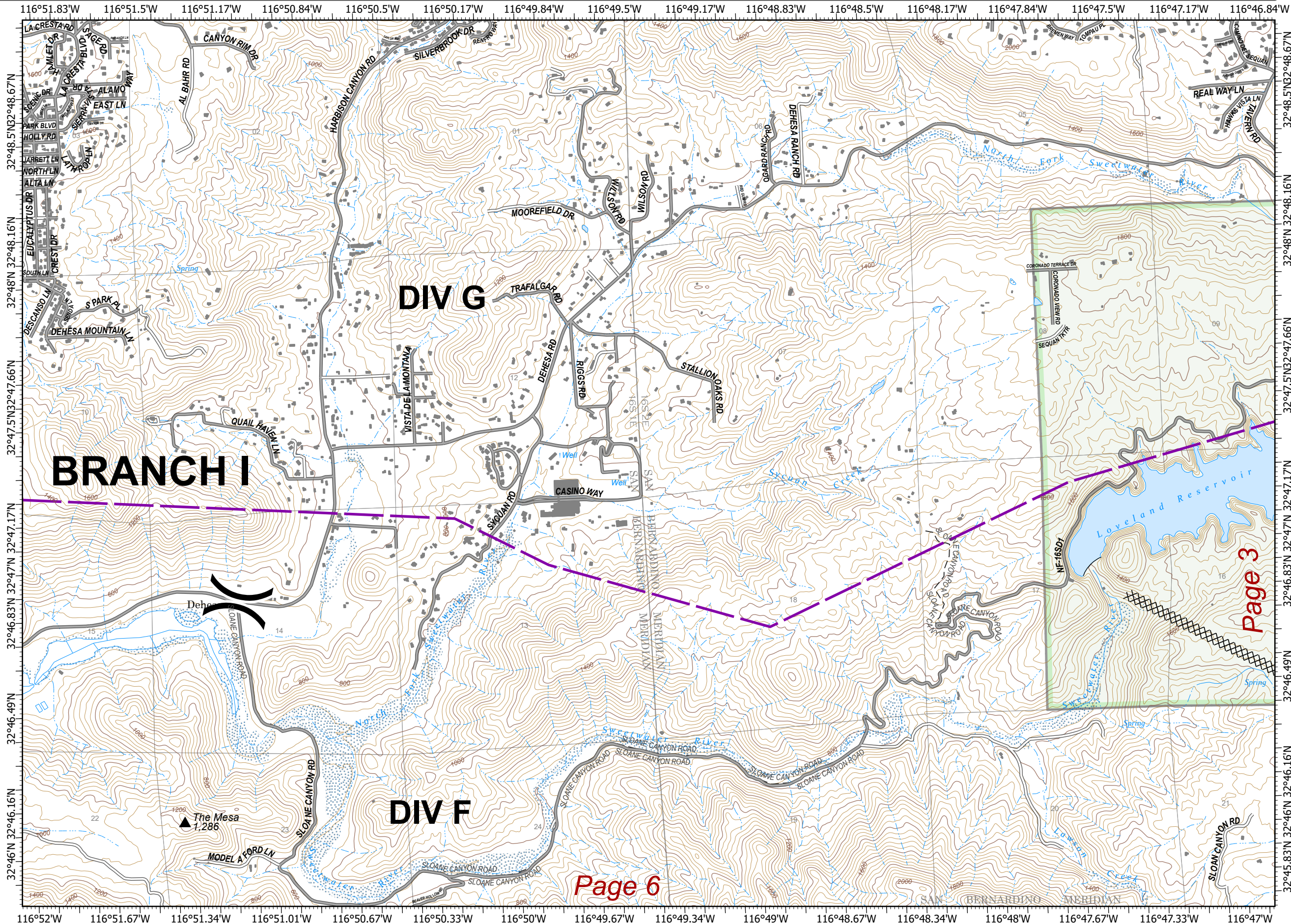


0 0.13 0.25 0.5 Miles

North American 1983 Datum. LatLong Grid

Valley Fire

CA-CNF-002833



Page 3

Page 6

IAP

Valley Fire

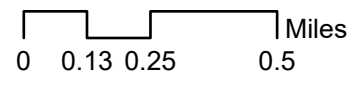
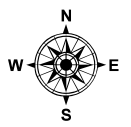
CA-CNF-002833

9/10/2020 07:00

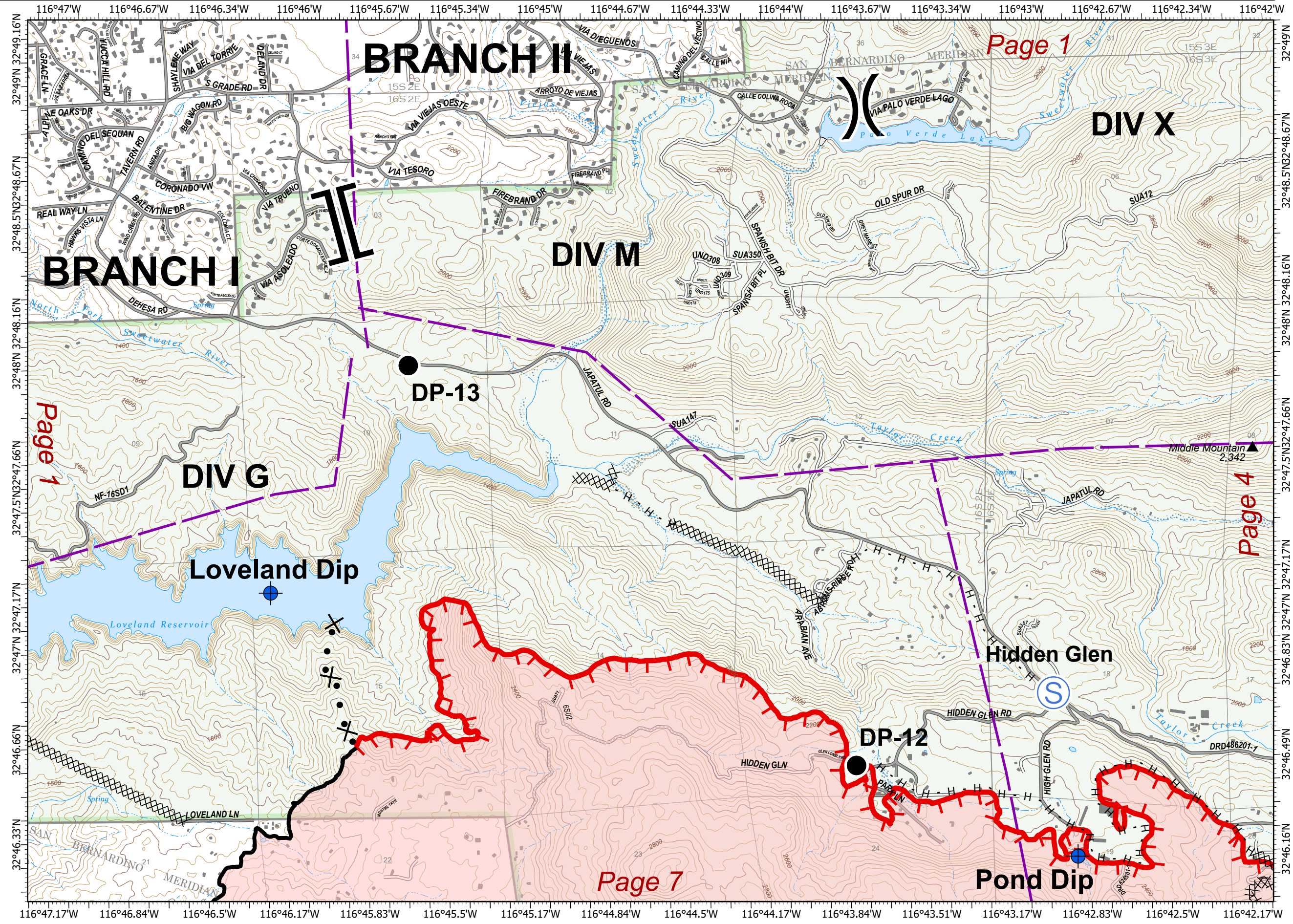
17,665 ac. as of
9/9/2020 12:00

Page 3
Branch I, II
Divisions G, M, X

- Dip Site
- Drop Point
- Staging Area
- Division Break
- Branch Break
- Uncontrolled Fire Edge
- Contained Line
- Completed Dozer Line
- Completed Hand Line
- Proposed Dozer Line
- Powerlines
- Wildfire Daily Fire Perimeter
- Cleveland National Forest



North American 1983 Datum. LatLong Grid



Page 1

Page 1

Page 4

Page 7

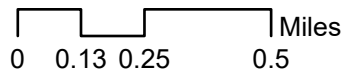
IAP

9/10/2020 07:00

17,665 ac. as of
9/9/2020 12:00

Page 4
Branch II
Division Z

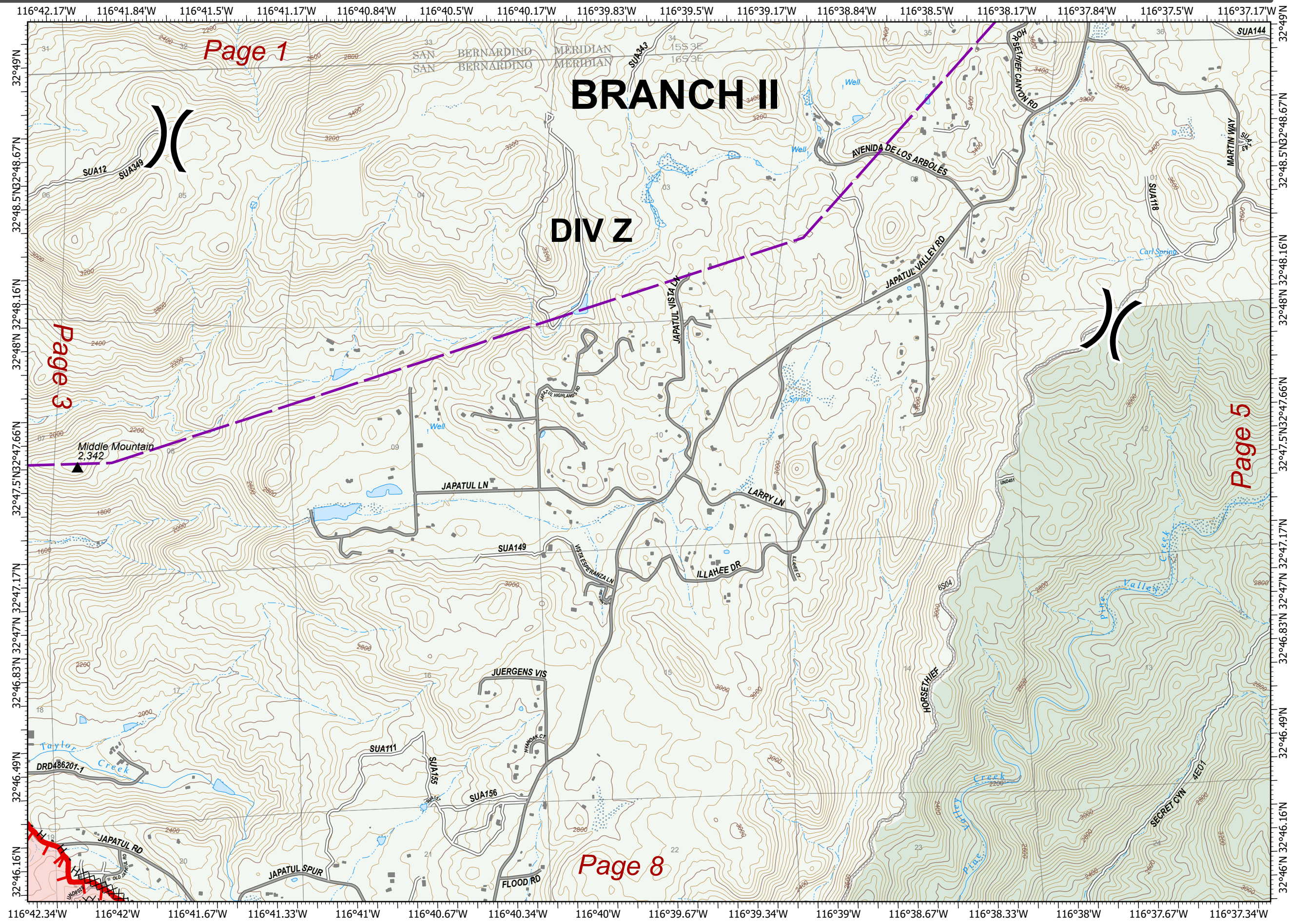
- (X) Division Break
- ▬ Uncontrolled Fire Edge
- ⊗⊗ Completed Dozer Line
- H Completed Hand Line
- Powerlines
- ▭ Wildfire Daily Fire Perimeter
- ▭ Cleveland National Forest
- ▭ Wilderness



North American 1983 Datum. LatLong Grid

Valley Fire





CA-CNF-002833

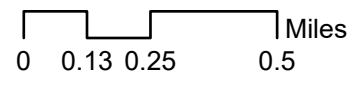
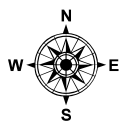


9/10/2020 07:00

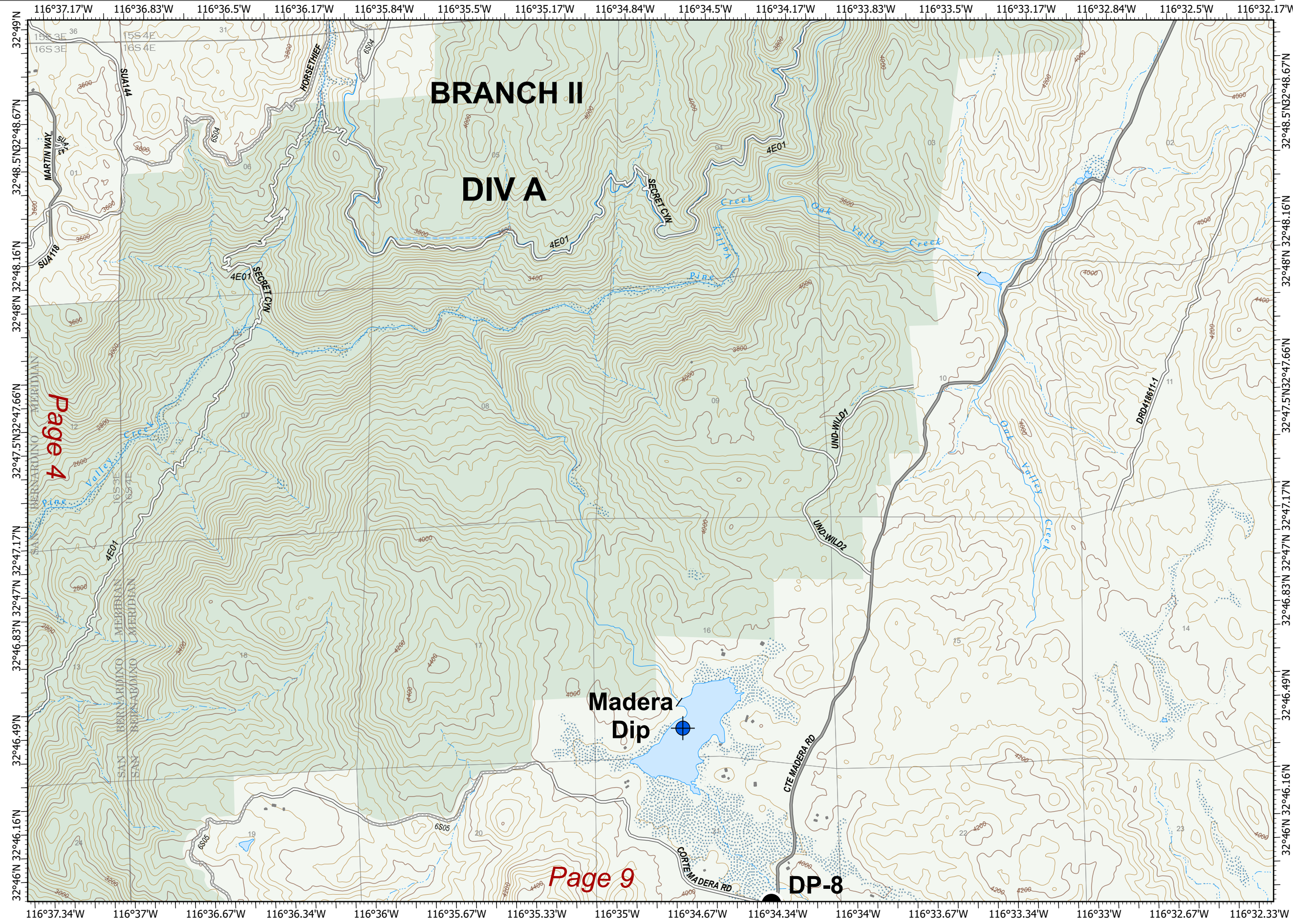
17,665 ac. as of
9/9/2020 12:00

Page 5
Branch II
Division A

-  Dip Site
-  Drop Point
-  Cleveland National Forest
-  Wilderness



North American 1983 Datum. LatLong Grid



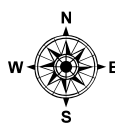
IAP

9/10/2020 07:00

17,665 ac. as of
9/9/2020 12:00

Page 6
Branch I
Division E, F

X Division Break

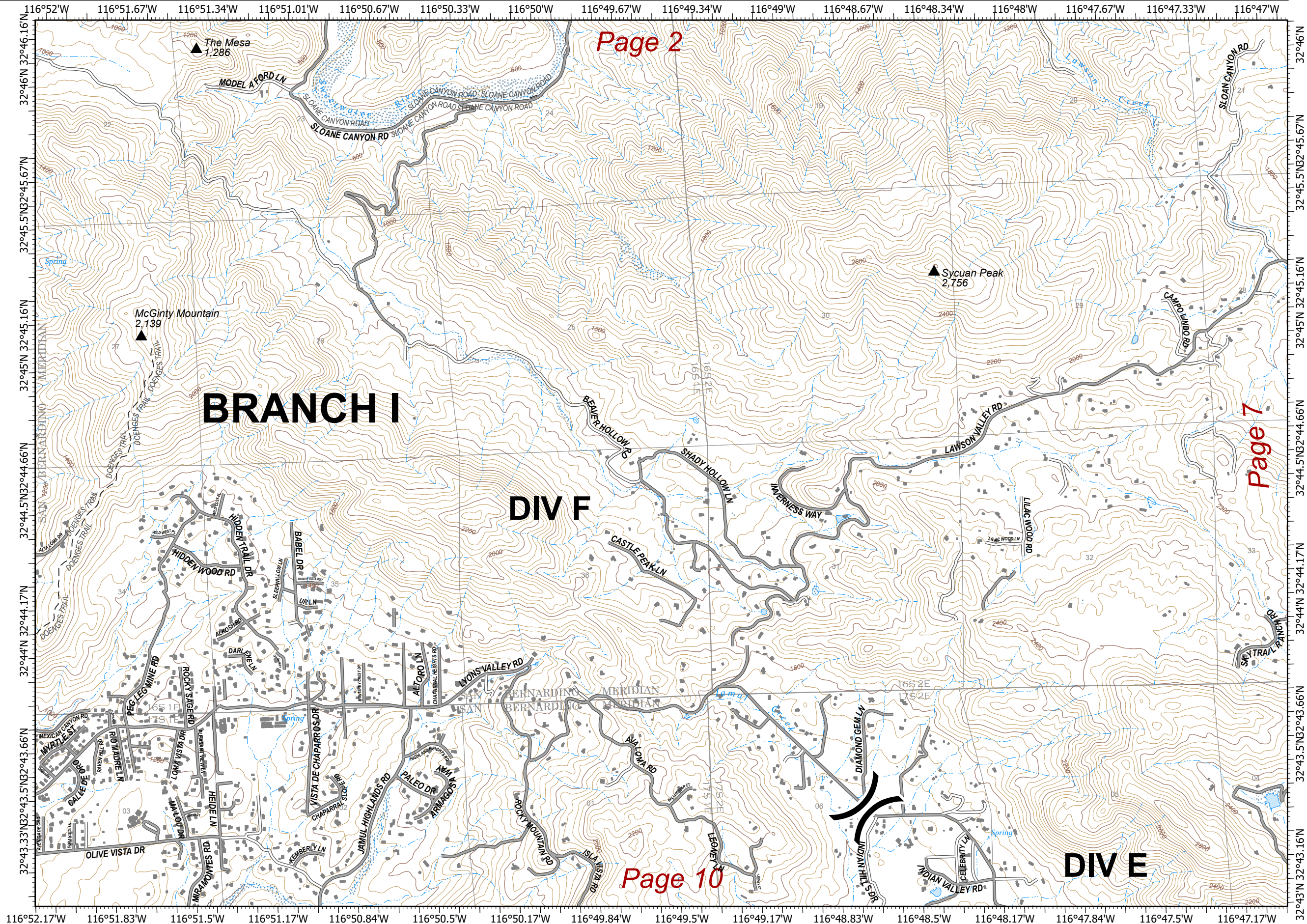


0 0.13 0.25 0.5 Miles

North American 1983 Datum. LatLong Grid

Valley Fire

CA-CNF-002833



IAP

Valley Fire

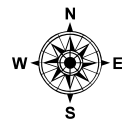
CA-CNF-002833

9/10/2020 07:00

17,665 ac. as of
9/9/2020 12:00

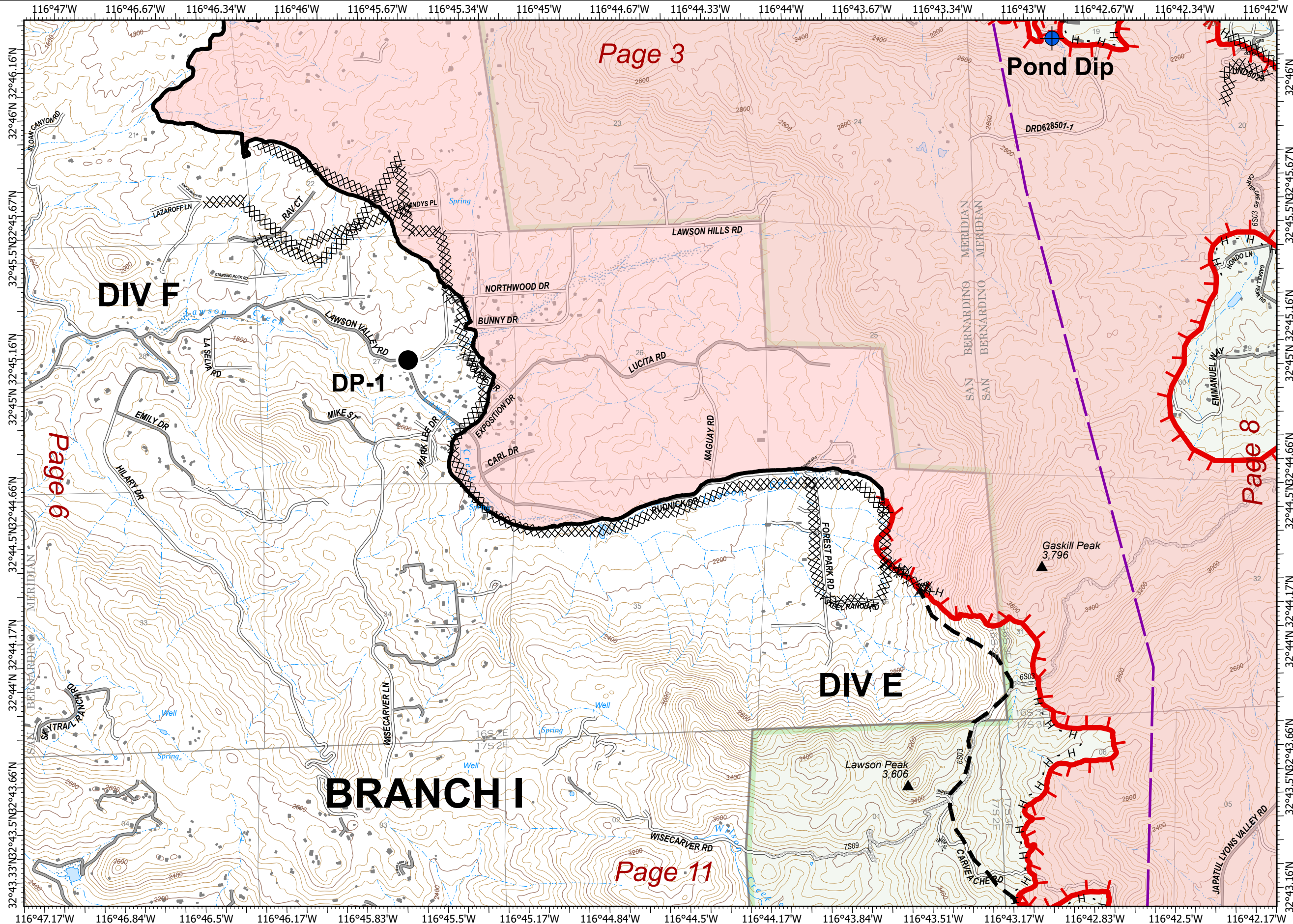
Page 7
Branch I
Division G, F

- Dip Site
- Drop Point
- Uncontrolled Fire Edge
- Contained Line
- Completed Dozer Line
- Completed Hand Line
- Planned Fire Line
- Powerlines
- Wildfire Daily Fire Perimeter
- Cleveland National Forest



0 0.13 0.25 0.5 Miles

North American 1983 Datum. LatLong Grid

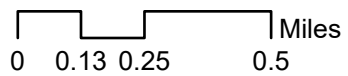


9/10/2020 07:00

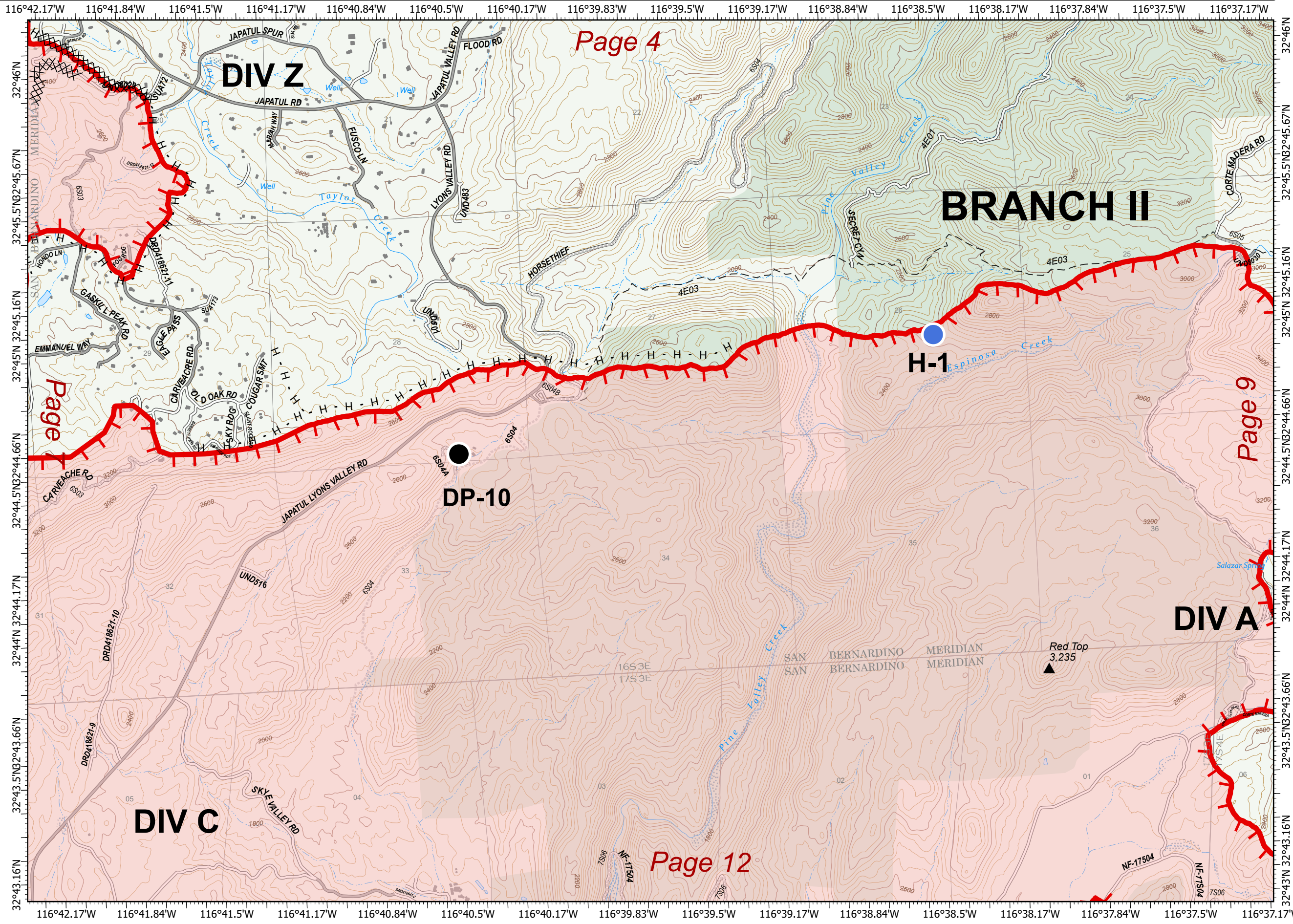
17,665 ac. as of
9/9/2020 12:00

Page 8
Branch II
Division Z, A, C

- Drop Point
- Helispot
- ▬ Uncontrolled Fire Edge
- ×× Completed Dozer Line
- H · Completed Hand Line
- Wildfire Daily Fire Perimeter
- Cleveland National Forest
- Wilderness



North American 1983 Datum. LatLong Grid



Page 4

Page 7

Page 9

Page 12

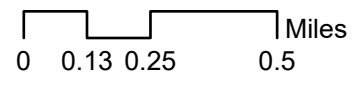
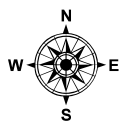
IAP

9/10/2020 07:00

17,665 ac. as of
9/9/2020 12:00

Page 9
Branch II
Division A

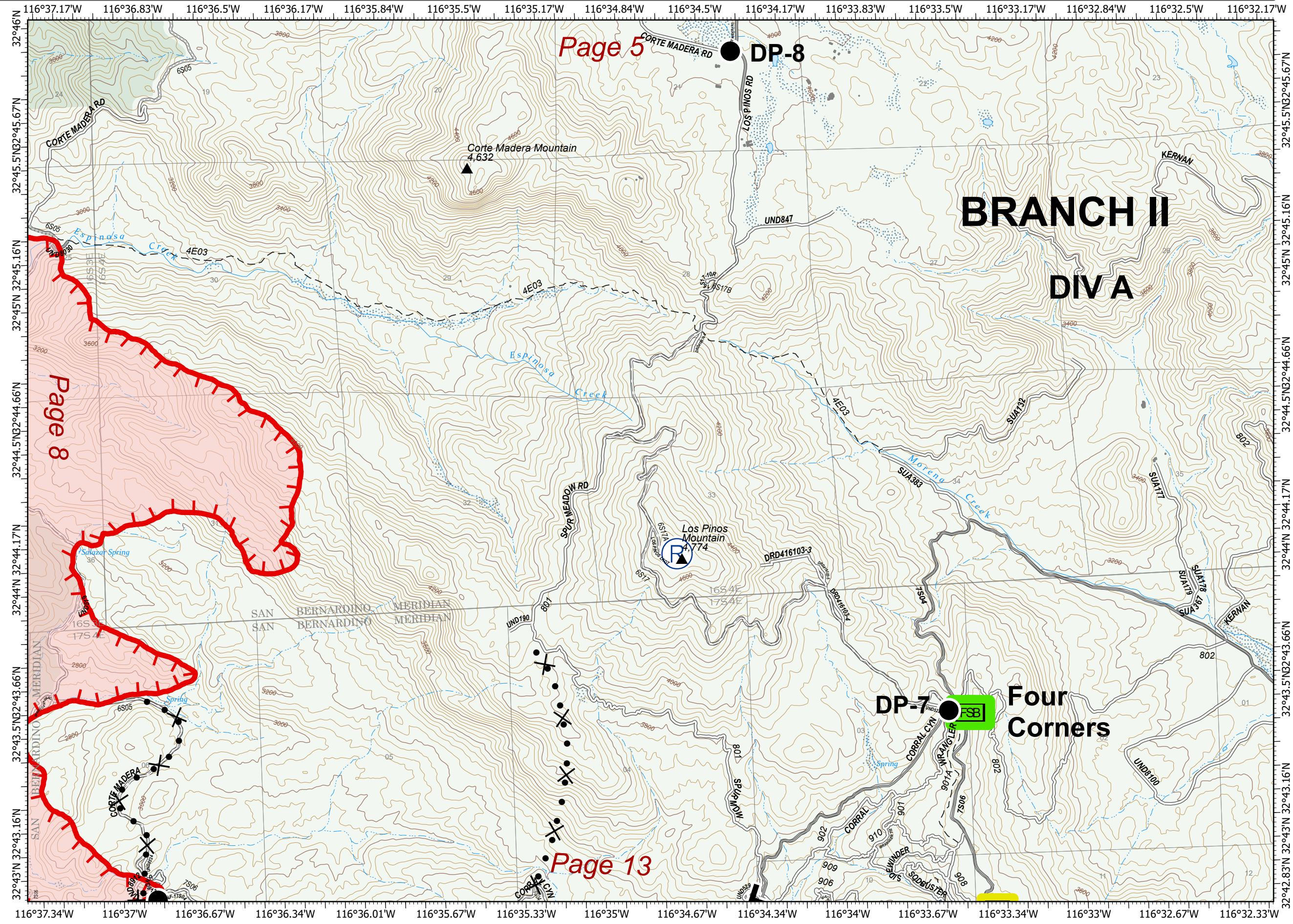
- Drop Point
- Ⓡ Repeater
- FSB Forward Supply Base
- RSA Remote Sleeping Area
- || Branch Break
- ┌ Uncontrolled Fire Edge
- X• Proposed Dozer Line
- Wildfire Daily Fire Perimeter
- Cleveland National Forest
- Wilderness



North American 1983 Datum. LatLong Grid

Valley Fire

CA-CNF-002833



Page 5

Page 8

Page 13

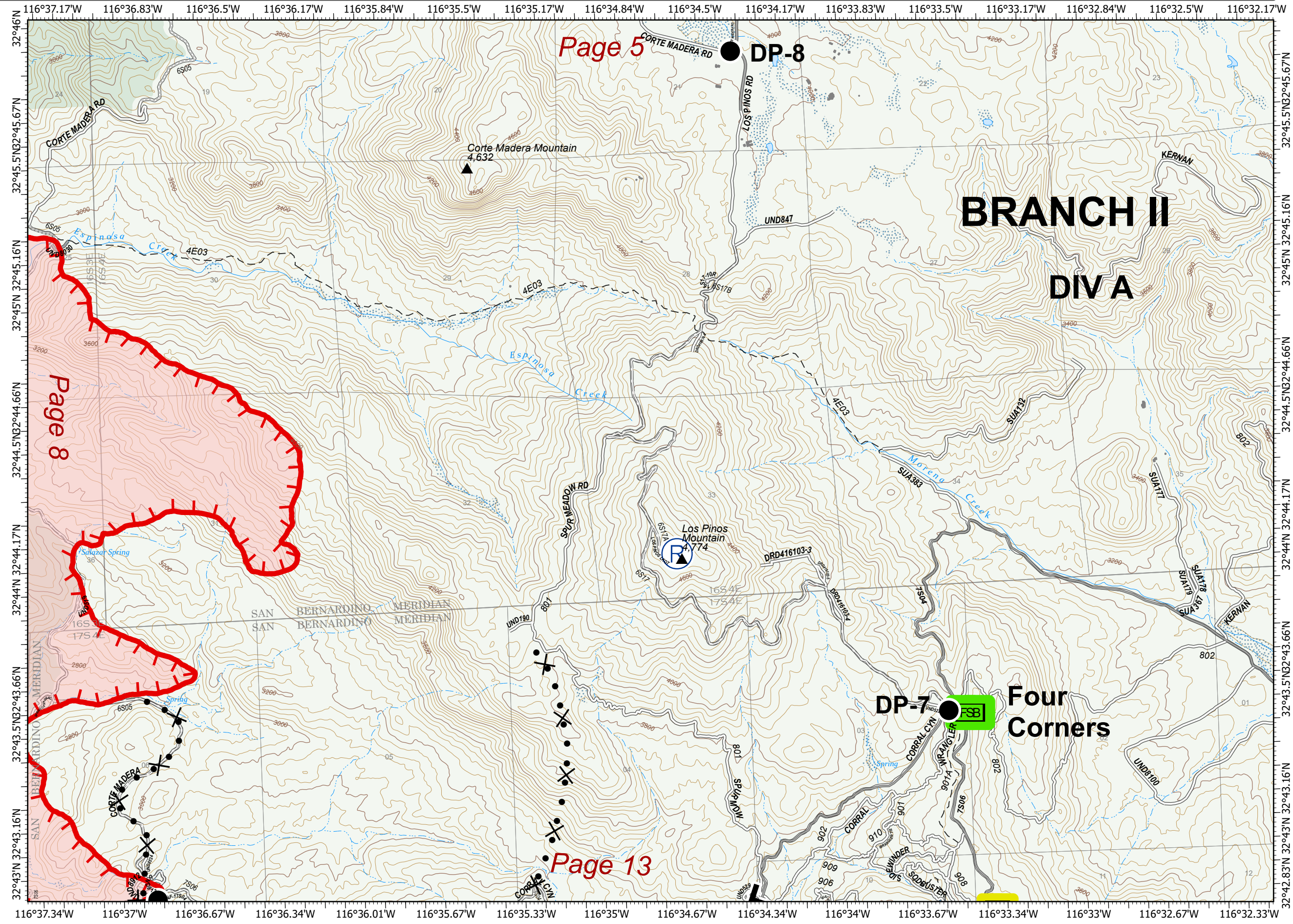
BRANCH II DIV A

DP-7
Four Corners

DP-8

Cortez Madera Mountain
4,632

Los Pinos Mountain
4,774



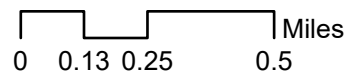
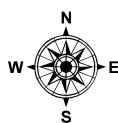
IAP

9/10/2020 07:00

17,665 ac. as of
9/9/2020 12:00

Page 10
Branch I
Division E

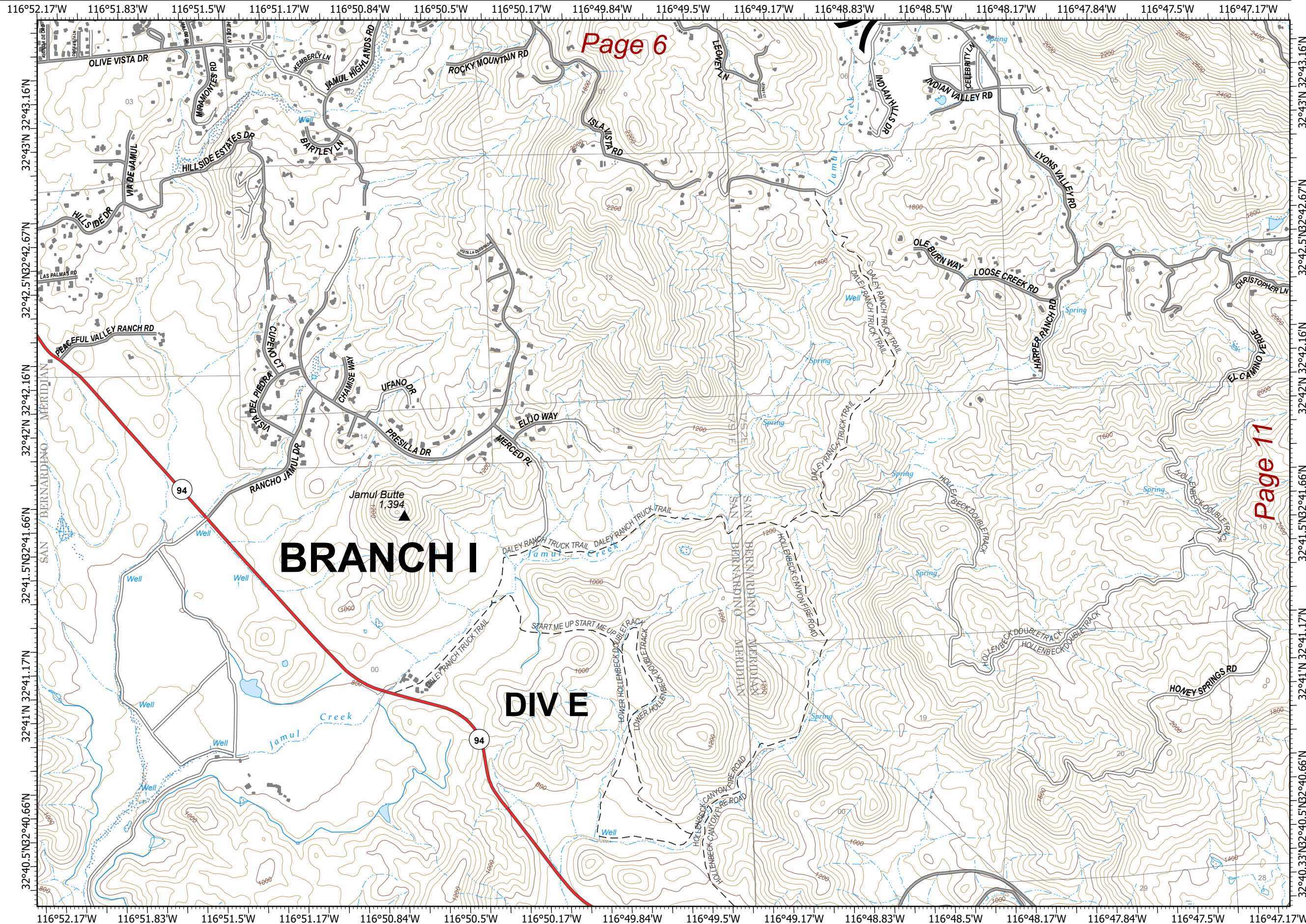
X Division Break



North American 1983 Datum. LatLong Grid

Valley Fire

CA-CNF-002833



IAP

Valley Fire

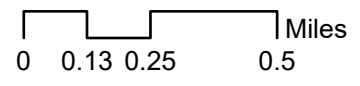
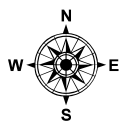
CA-CNF-002833

9/10/2020 07:00

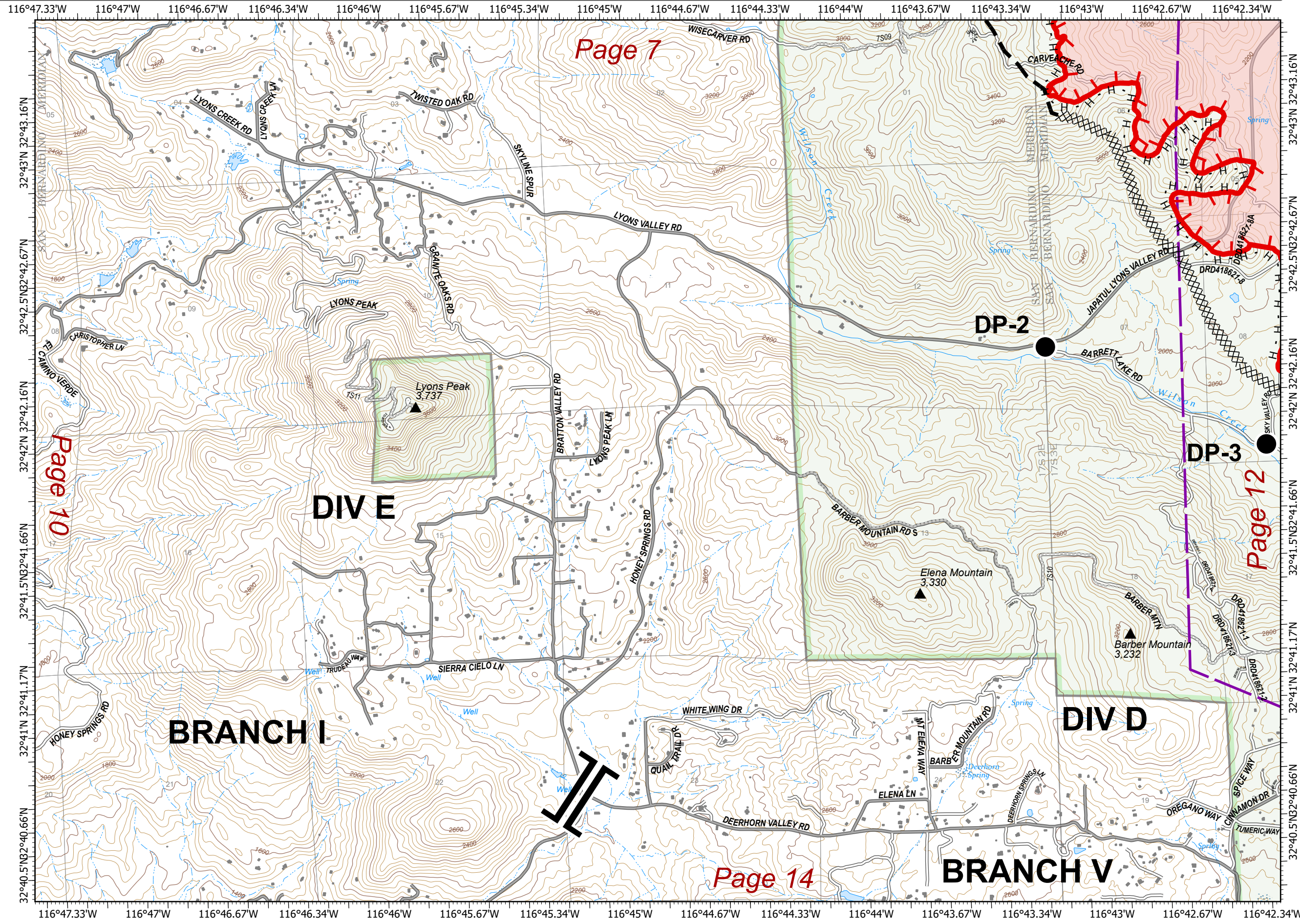
17,665 ac. as of
9/9/2020 12:00

Page 11
Branch I, V
Division D, E

- Drop Point
- || Branch Break
- ┌ Uncontrolled Fire Edge
- ⊗⊗ Completed Dozer Line
- H · Completed Hand Line
- Planned Fire Line
- Powerlines
- ▭ Wildfire Daily Fire Perimeter
- ▭ Cleveland National Forest



North American 1983 Datum. LatLong Grid



Page 7

Page 10

Page 12

Page 14

IAP

Valley Fire

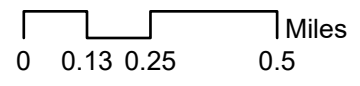
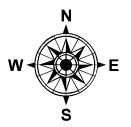
CA-CNF-002833

9/10/2020 07:00

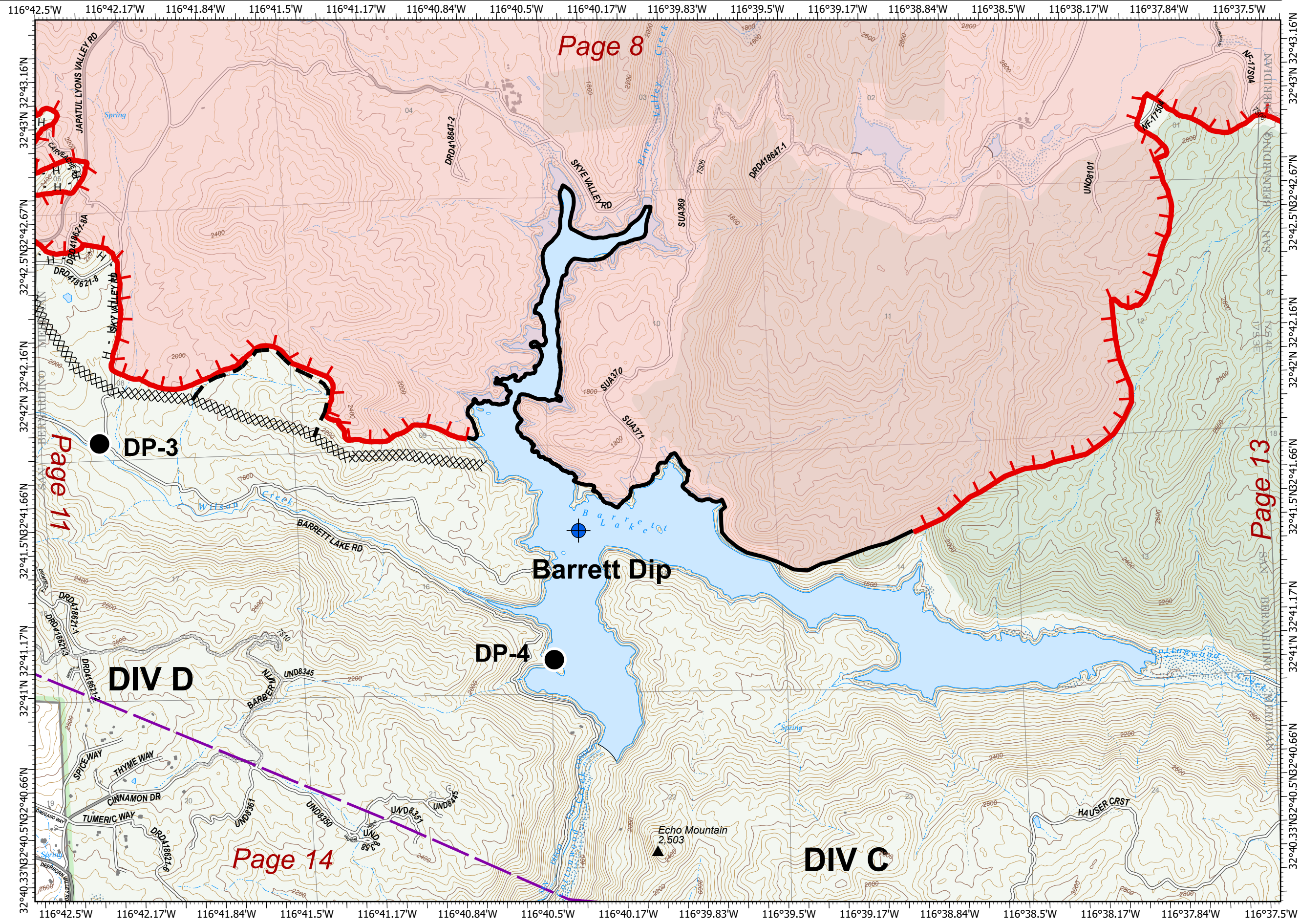
17,665 ac. as of
9/9/2020 12:00

Page 12
Branch V
Division C, D

- Dip Site
- Drop Point
- Uncontrolled Fire Edge
- Contained Line
- Completed Dozer Line
- Completed Hand Line
- Planned Fire Line
- Powerlines
- Wildfire Daily Fire Perimeter
- Cleveland National Forest
- Wilderness



North American 1983 Datum. LatLong Grid



IAP







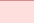


Valley Fire

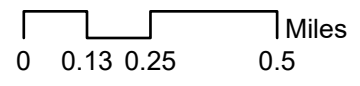
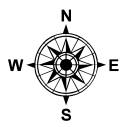
CA-CNF-002833

9/10/2020 07:00

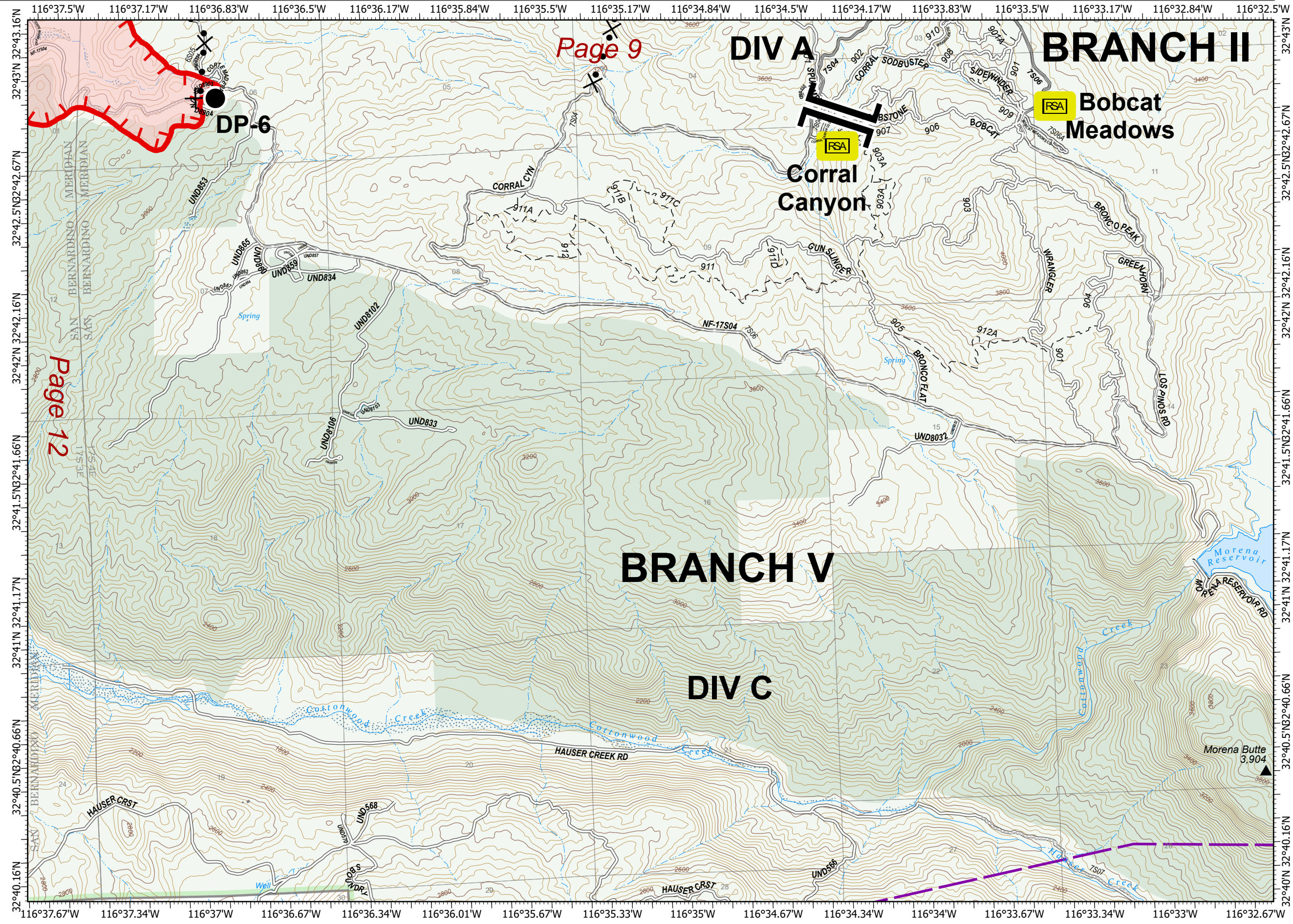
17,665 ac. as of
9/9/2020 12:00

Page 13
Branch II, V
Division A, C

-  Drop Point
-  Remote Sleeping Area
-  Branch Break
-  Uncontrolled Fire Edge
-  Proposed Dozer Line
-  Powerlines
-  Wildfire Daily Fire Perimeter
-  Cleveland National Forest
-  Wilderness



North American 1983 Datum. LatLong Grid



IAP


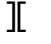


Valley Fire

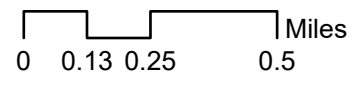
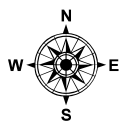
CA-CNF-002833

9/10/2020 07:00

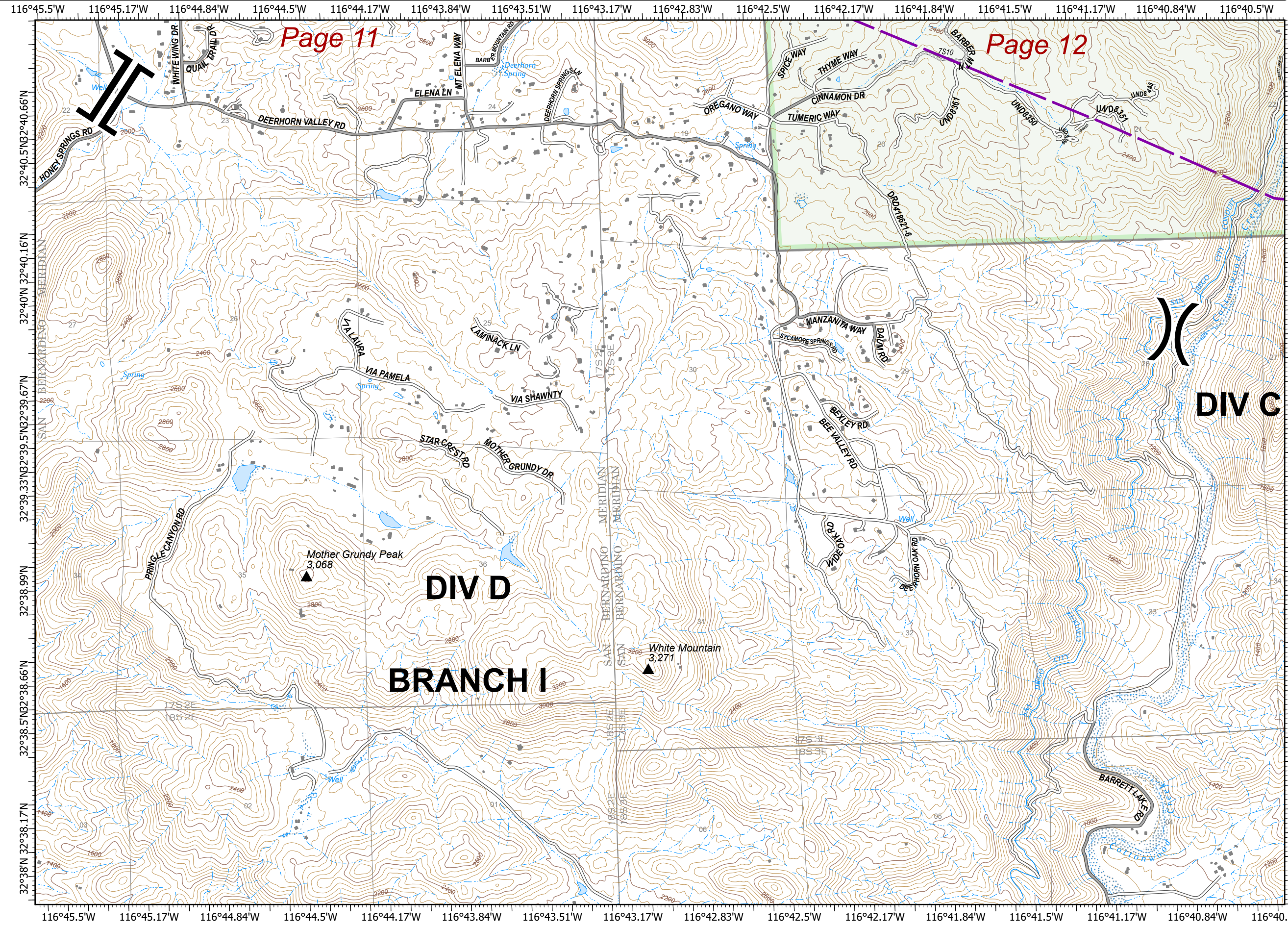
17,665 ac. as of
9/9/2020 12:00

Page 14
Branch V
Division C, D

-  Division Break
-  Branch Break
-  Powerlines
-  Cleveland National Forest



North American 1983 Datum. LatLong Grid



Page 11

Page 12

DIV D

BRANCH I

DIV C