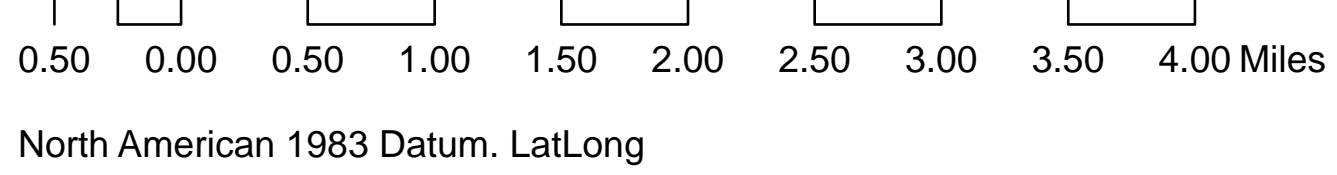
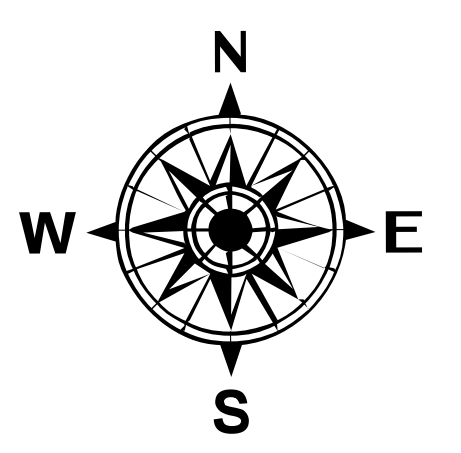
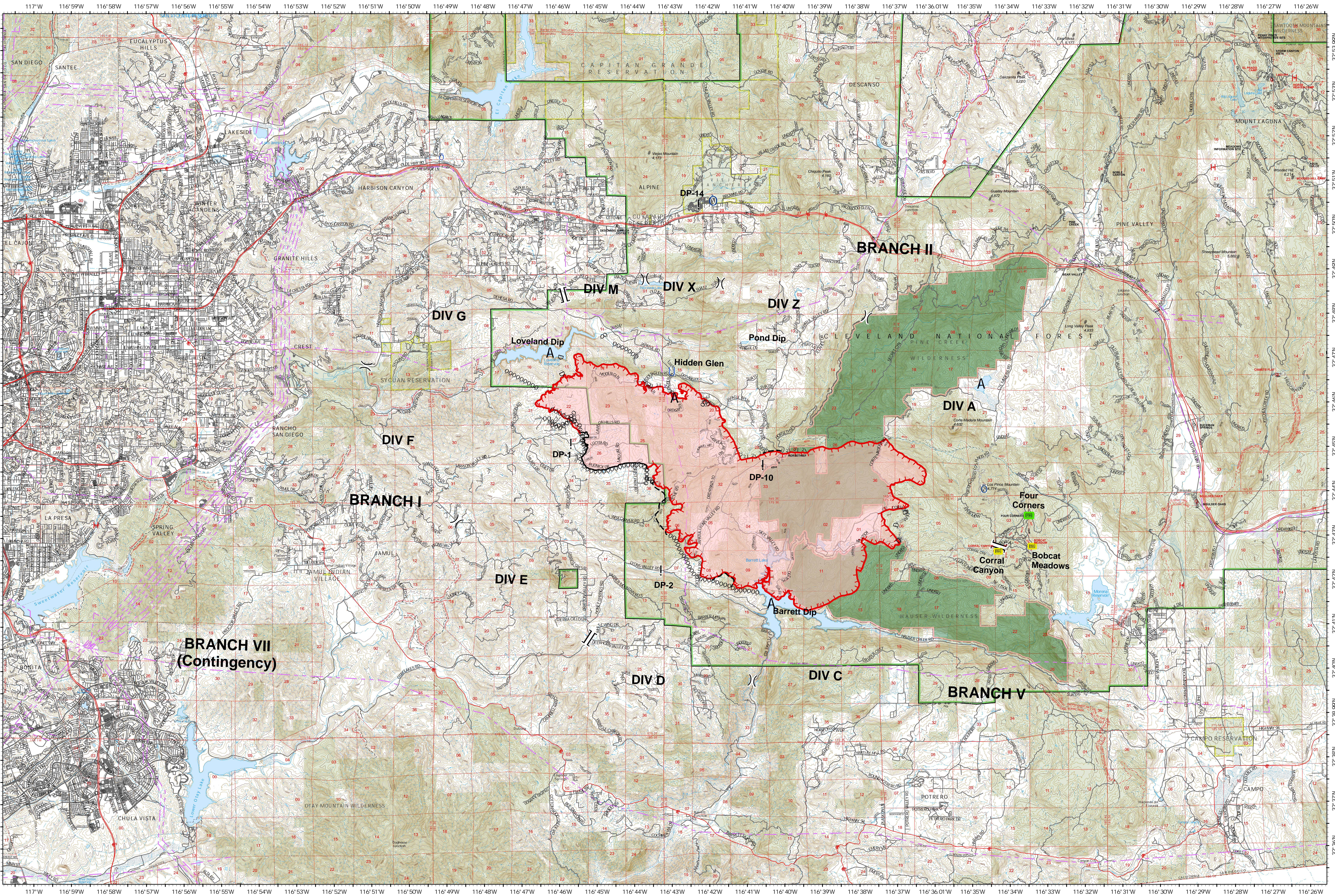


9/9/2020, 0700

CA-CNF-002833

Valley Fire

OPERATIONS



- | | | | | | | | | | | | | | |
|---|---------------|---|-----------------------|---|----------------------|---|------------------------|-------|----------------------|-------|-------------------------------|---|---------------------------|
| A | Dip Site | ○ | Incident Command Post | U | Staging Area | | Branch Break | 000 | Completed Dozer Line | - - - | Planned Fire Line | ▨ | Cleveland National Forest |
| ! | Drop Point | ○ | Repeater | ■ | Remote Sleeping Area | — | Uncontrolled Fire Edge | 1 2 1 | Completed Hand Line | --- | Powerlines | ■ | Wilderness |
| ○ | Incident Base | ■ | Forward Supply Base |) | Division Break | — | Contained Line | D | Proposed Dozer Line | ■ | Wildfire Daily Fire Perimeter | ■ | Federal Land |



CA-CNF-002833
17,565 Acres
9/8/2020, 2000