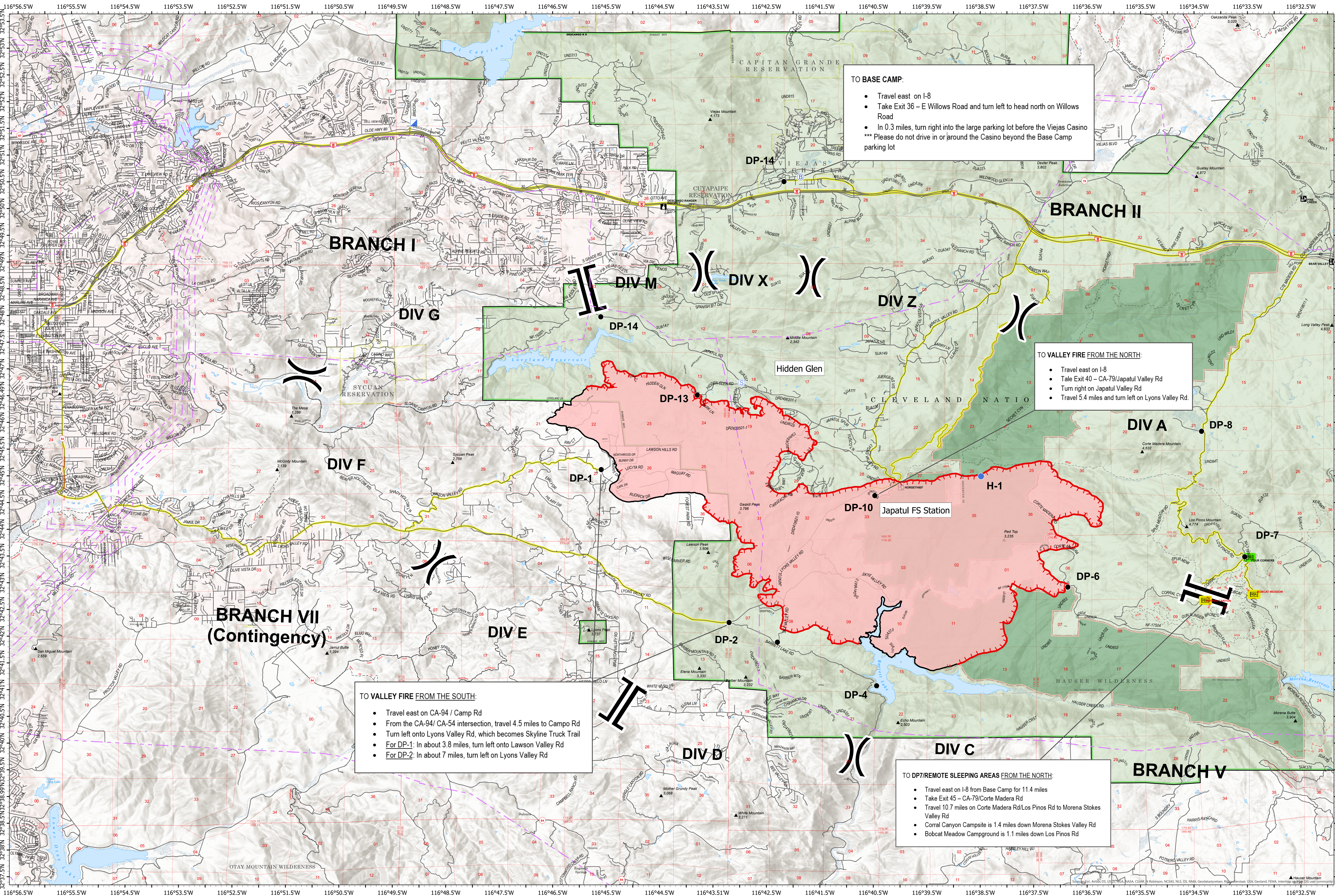


9/9/2020 12:00

CA-CNF-002833

Valley Fire

TRANSPORTATION



TO BASE CAMP:

- Travel east on I-8
- Take Exit 36 – E Willows Road and turn left to head north on Willows Road
- In 0.3 miles, turn right into the large parking lot before the Viejas Casino
- *** Please do not drive in or around the Casino beyond the Base Camp parking lot

TO VALLEY FIRE FROM THE NORTH:

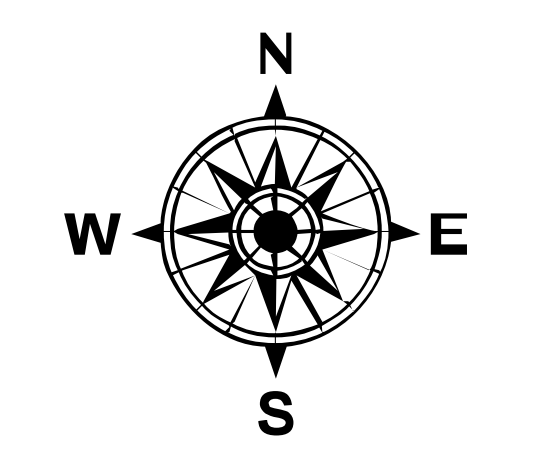
- Travel east on I-8
- Take Exit 40 – CA-79/Japatal Valley Rd
- Turn right on Japatal Valley Rd
- Travel 5.4 miles and turn left on Lyons Valley Rd.

TO VALLEY FIRE FROM THE SOUTH:

- Travel east on CA-94 / Camp Rd
- From the CA-94/ CA-54 intersection, travel 4.5 miles to Campo Rd
- Turn left onto Lyons Valley Rd, which becomes Skyline Truck Trail
- For DP-1: In about 3.8 miles, turn left onto Lawson Valley Rd
- For DP-2: In about 7 miles, turn left on Lyons Valley Rd

TO DP7/REMOTE SLEEPING AREAS FROM THE NORTH:

- Travel east on I-8 from Base Camp for 11.4 miles
- Take Exit 45 – CA-79/Corte Madera Rd
- Travel 10.7 miles on Corte Madera Rd/Los Pinos Rd to Morena Stokes Valley Rd
- Corral Canyon Campsite is 1.4 miles down Morena Stokes Valley Rd
- Bobcat Meadow Campground is 1.1 miles down Los Pinos Rd



- Cleveland National Forest
- Wilderness
- Wildfire Daily Fire Perimeter
- Uncontrolled Fire Edge
- Contained Line
- Main Routes
- Highway
- Other Roads
- Powerlines



17,665 acres as of
9/9/2020 12:00