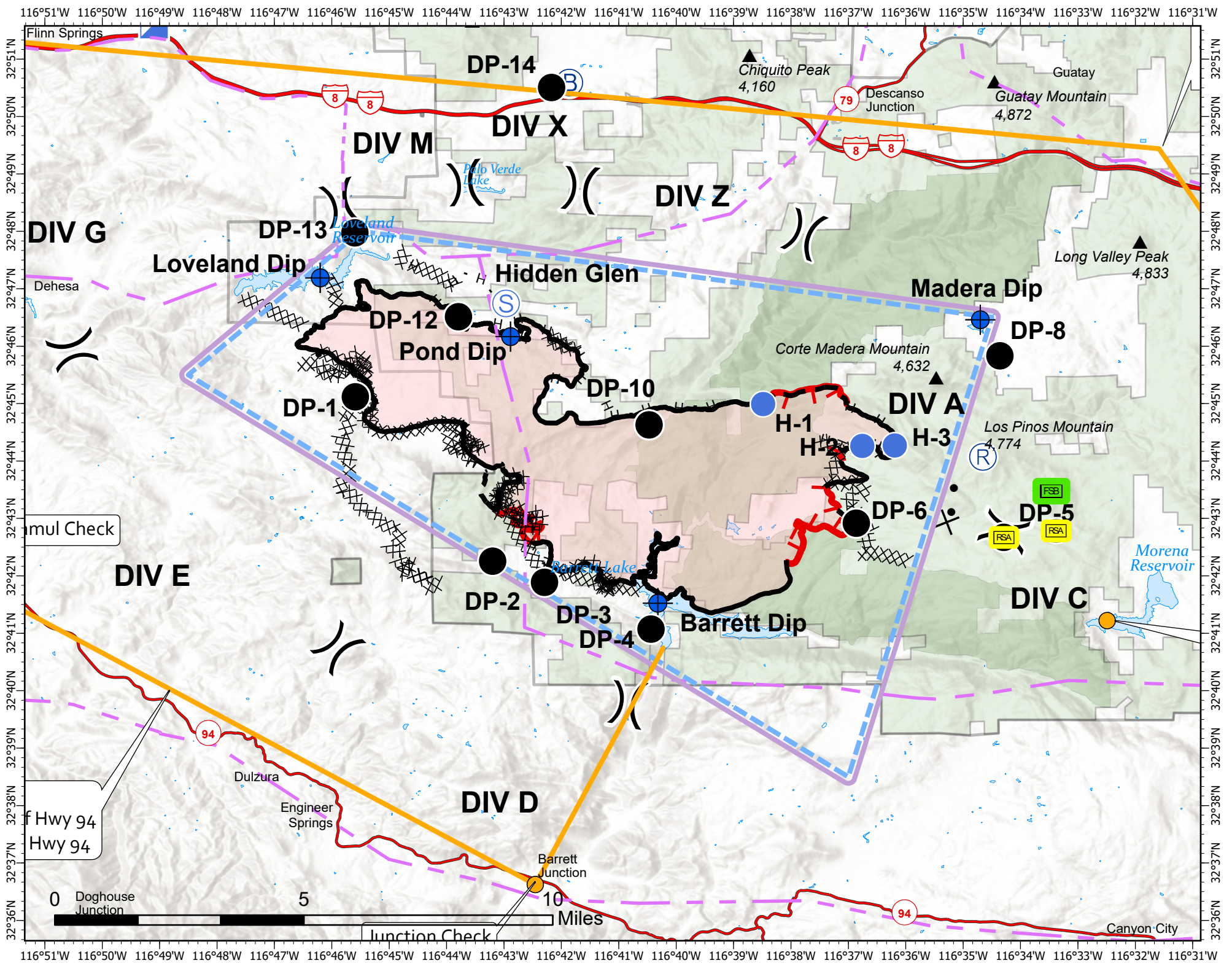


**Pilot Map Valley Fire**  
**CA-CNF-002833**  
**9/13/2020**  
**17,665 Acres**

- |                        |                     |                               |             |                     |                      |                           |
|------------------------|---------------------|-------------------------------|-------------|---------------------|----------------------|---------------------------|
| Uncontrolled Fire Edge | Proposed Dozer Line | Wildfire Daily Fire Perimeter | Event Point | Helispot            | Staging Area         | Forest Service Boundaries |
| Contained Line         | Planned Fire Line   | TFR                           | Dip Site    | Repeater            | Junction Check       | FSBasicOwnership          |
| Completed Dozer Line   | Powerlines          | Cleveland National Forest     | Drop Point  | Forward Supply Base | Remote Sleeping Area | AircraftRoutes            |
| Completed Hand Line    |                     |                               |             |                     |                      |                           |







Label	LatWGS84_DDM	LongWGS84_DDM
Barrett Dip	32° 41.523' N	116° 40.319' W
Bobcat Meadow	32° 42.783' N	116° 33.378' W
Command Repeater	32° 44.071' N	116° 34.655' W
Corral Canyon	32° 42.671' N	116° 34.287' W
DP-1	32° 45.118' N	116° 45.590' W
DP-10	32° 44.630' N	116° 40.472' W
DP-12	32° 46.512' N	116° 43.793' W
DP-13	32° 47.973' N	116° 45.598' W
DP-14	32° 50.505' N	116° 42.171' W
DP-2	32° 42.255' N	116° 43.197' W
DP-3	32° 41.887' N	116° 42.294' W
DP-4	32° 41.072' N	116° 40.438' W
DP-5	32° 42.670' N	116° 34.291' W
DP-6	32° 42.917' N	116° 36.861' W
DP-8	32° 45.832' N	116° 34.359' W
Four Corners	32° 43.475' N	116° 33.462' W
H-1	32° 44.991' N	116° 38.485' W
H-2	32° 44.263' N	116° 36.757' W
H-3	32° 44.270' N	116° 36.191' W
Hidden Glen Staging	32° 46.744' N	116° 42.965' W
Jamul Check	32° 43.500' N	116° 52.001' W
Jennings Check	32° 51.500' N	116° 53.001' W
Junction Check	32° 36.624' N	116° 42.455' W
Lake IP	32° 41.220' N	116° 32.491' W
Loveland Dip	32° 47.189' N	116° 46.202' W
Madera Dip	32° 46.460' N	116° 34.701' W
Pond Dip	32° 46.166' N	116° 42.886' W

FREQUENCIES	RX	TONE	TX	TONE	AM/FM
AIR TACTICS	171.0375		171.0375		FM
ROTOR VICTOR	125.075		125.075		AM
CMD 1	171.425		164.8	(T7) 167.9 (T9) 100.0	FM
DECK	163.1		163.1		FM
AIR TO GROUND COMMAND	167.95		167.95		FM
AIR TO GROUND TACTICAL	171.8375		171.8375		FM
AIR BRIEFING	132.775		132.775		FM
CALCORD	156.075	(T6) 156.7	156.075	(T6) 156.7	FM
AIR GUARD	168.625		168.625	(T1) 110.9	FM