

IAP

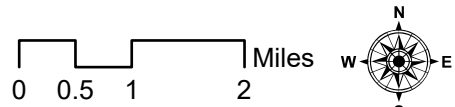
9/18/2020

17,093 ac. as of
9/17/2020

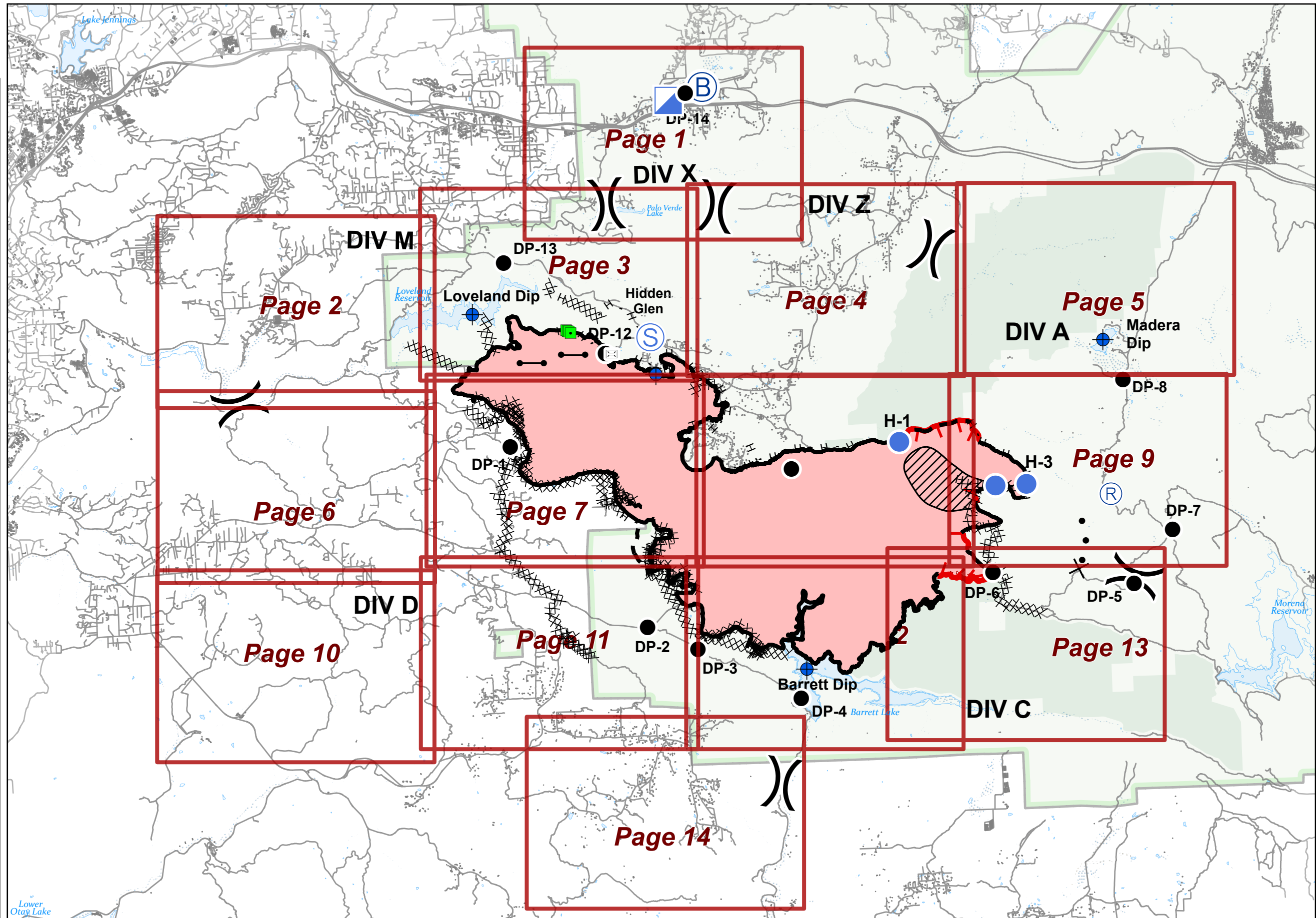
Valley Fire

CA-CNF-002833

- Bridge
- Dip Site
- Drop Point
- Gate
- Helispot
- Incident Base
- Incident Command Post
- Landmark
- Repeater
- Staging Area
- Division Break
- Uncontrolled Fire Edge
- Contained Line
- Completed Dozer Line
- Completed Hand Line
- Proposed Dozer Line
- Planned Fire Line
- Wildfire Daily Fire Perimeter
- Unburned Island
- Cleveland National Forest
- Wilderness
- IAP Grid Index



North American 1983 Datum. Lat/Long Grid



IAP

9/18/2020

17,093 ac. as of
9/17/2020

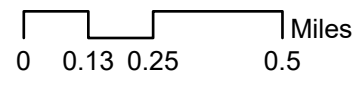
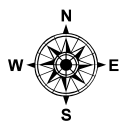
Page 1

Division M, X, Z

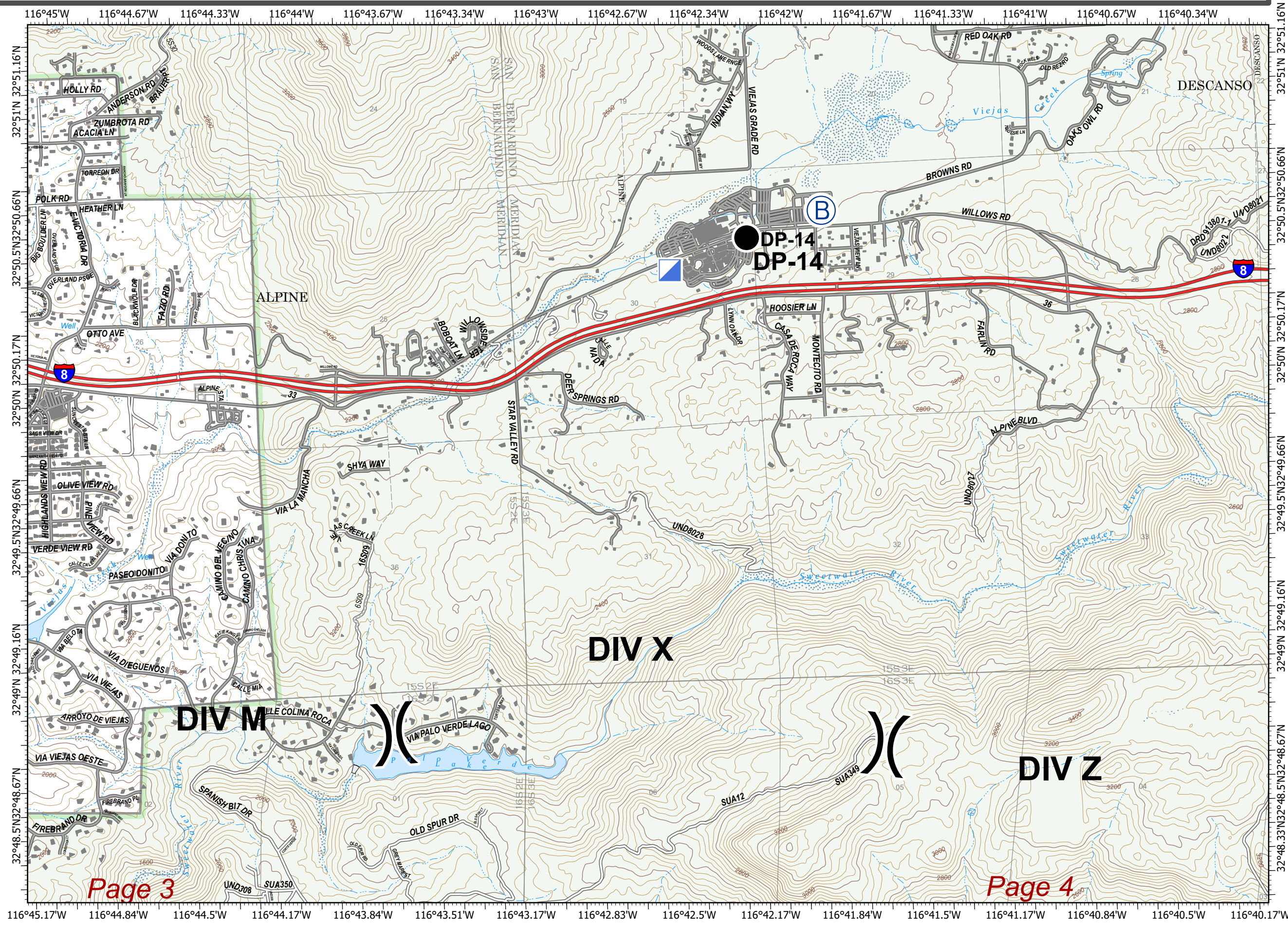
Valley Fire

CA-CNF-002833

- Bridge
- Dip Site
- Drop Point
- Gate
- Landmark
- Staging Area
- Division Break
- Contained Line
- Completed Dozer Line
- Completed Hand Line
- Aerial Retardant Drop
- Powerlines
- Cleveland National Forest



North American 1983 Datum. LatLong Grid



Page 3

Page 4

IAP

9/18/2020

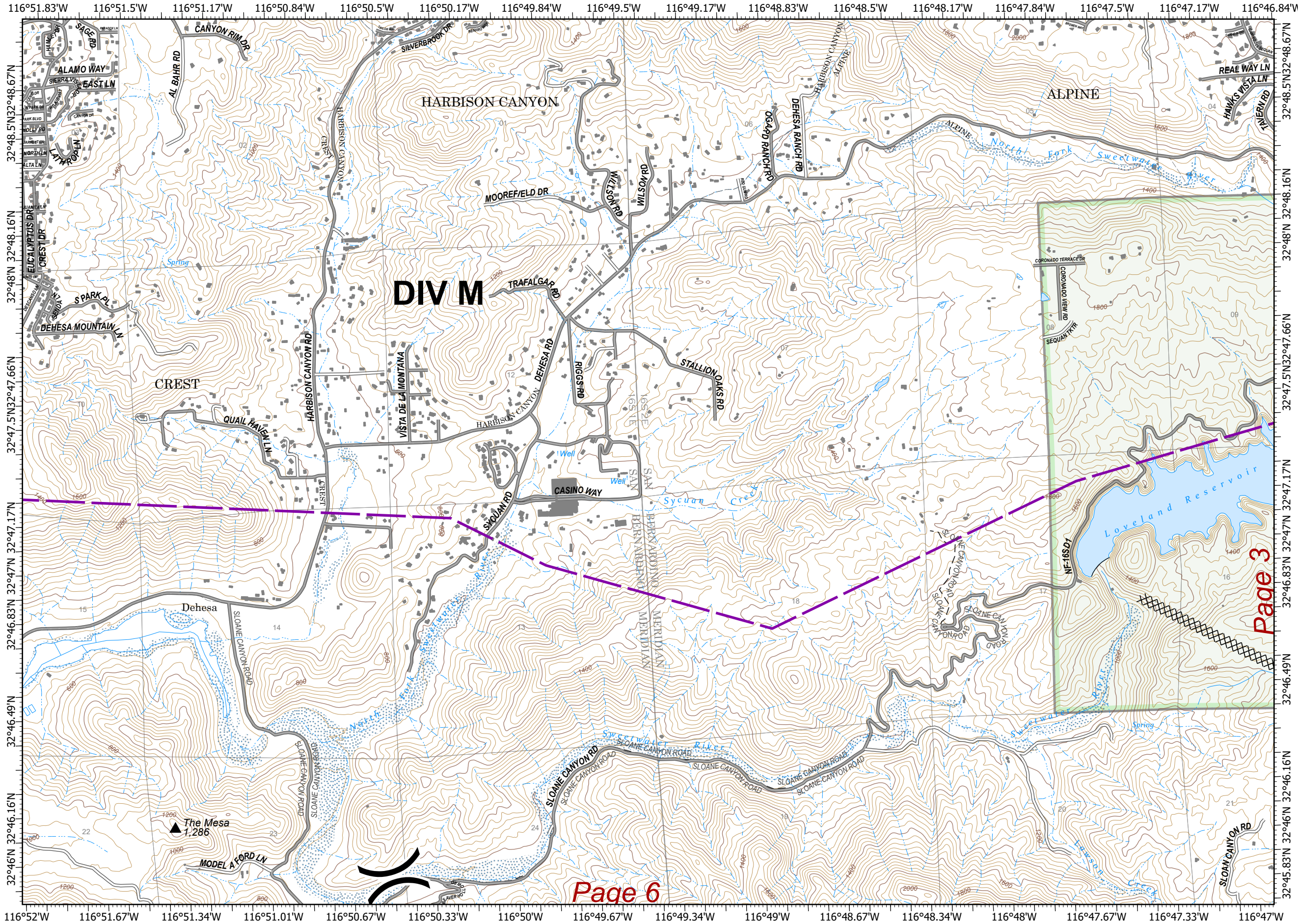
17,093 ac. as of
9/17/2020

Page 2

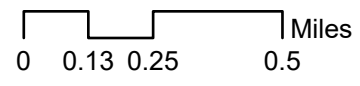
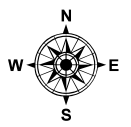
Division M

Valley Fire

CA-CNF-002833



- Bridge
- Dip Site
- Drop Point
- Gate
- Landmark
- Staging Area
- Division Break
- Contained Line
- Completed Dozer Line
- Completed Hand Line
- Aerial Retardant Drop
- Powerlines
- Cleveland National Forest



North American 1983 Datum. LatLong Grid

Page 3

Page 6

IAP

9/18/2020

17,093 ac. as of
9/17/2020

Page 3

Divisions M, X

Valley Fire

CA-CNF-002833

Page 1

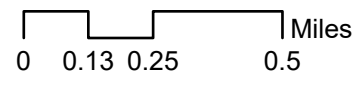
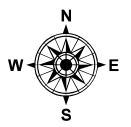
DIV X

DIV M

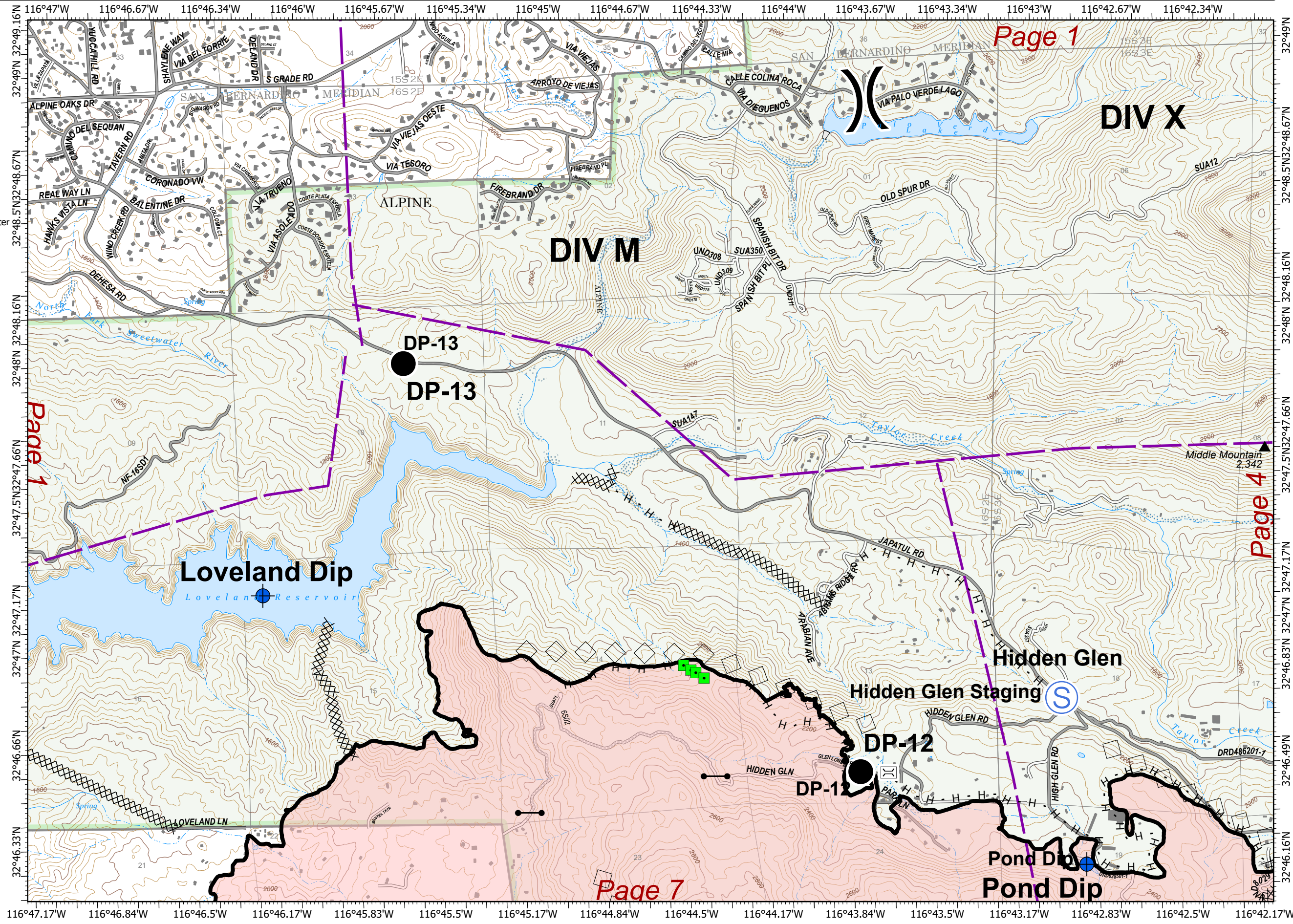
Page 4

Page 7

- Bridge
- Dip Site
- Drop Point
- Gate
- Landmark
- Staging Area
- Division Break
- Contained Line
- Completed Dozer Line
- Completed Hand Line
- Aerial Retardant Drop
- Powerlines
- Cleveland National Forest
- Wildfire Daily Fire Perimeter



North American 1983 Datum. LatLong Grid



IAP

9/18/2020

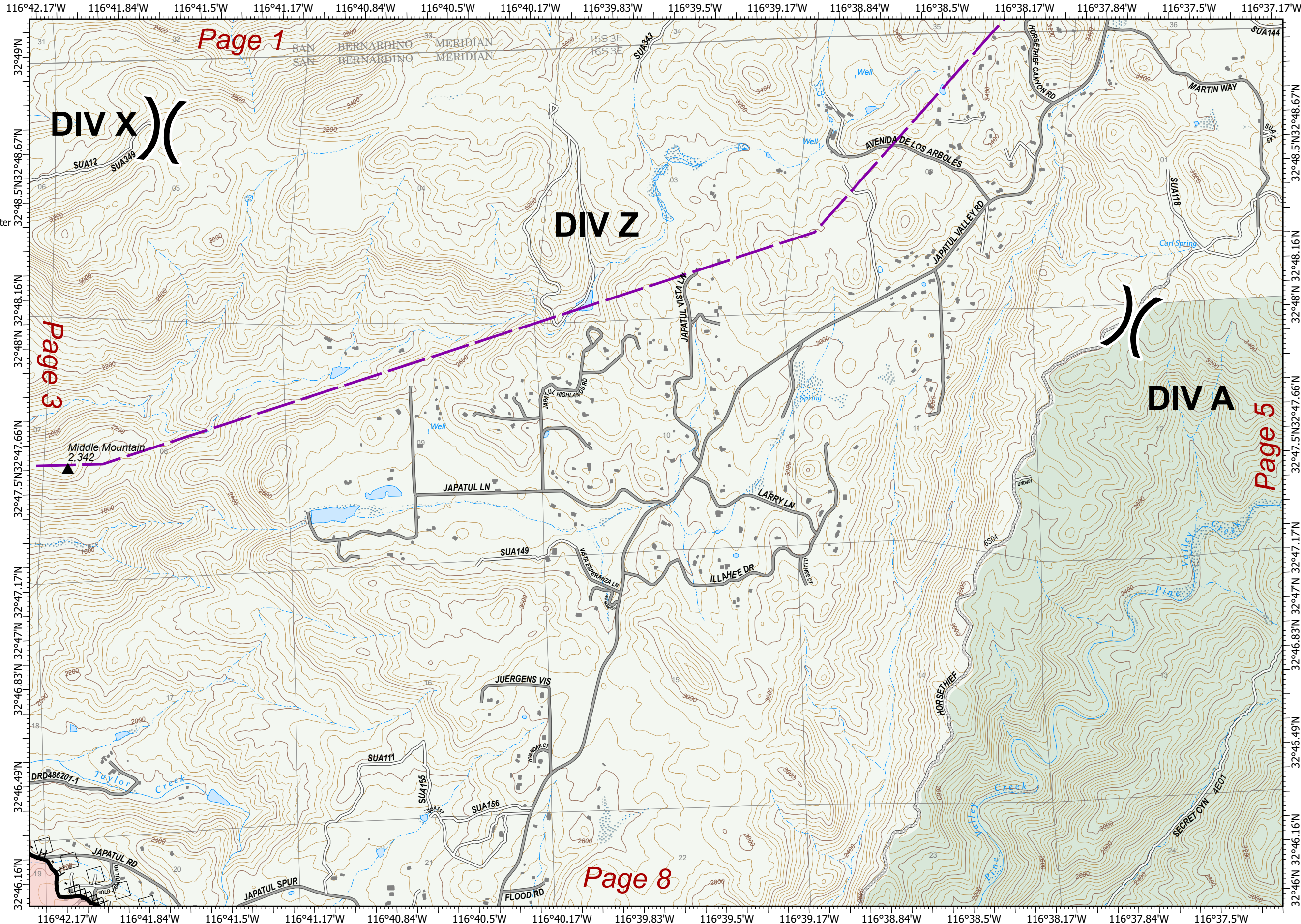
17,093 ac. as of
9/17/2020

Page 4

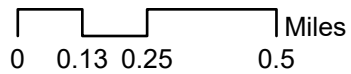
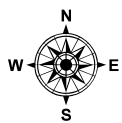
Division X, Z, A

Valley Fire

CA-CNF-002833



- Bridge
- Dip Site
- Drop Point
- Gate
- Landmark
- Staging Area
- Division Break
- Contained Line
- Completed Dozer Line
- Completed Hand Line
- Aerial Retardant Drop
- Powerlines
- Cleveland National Forest
- Wildfire Daily Fire Perimeter



North American 1983 Datum. LatLong Grid

IAP

9/18/2020

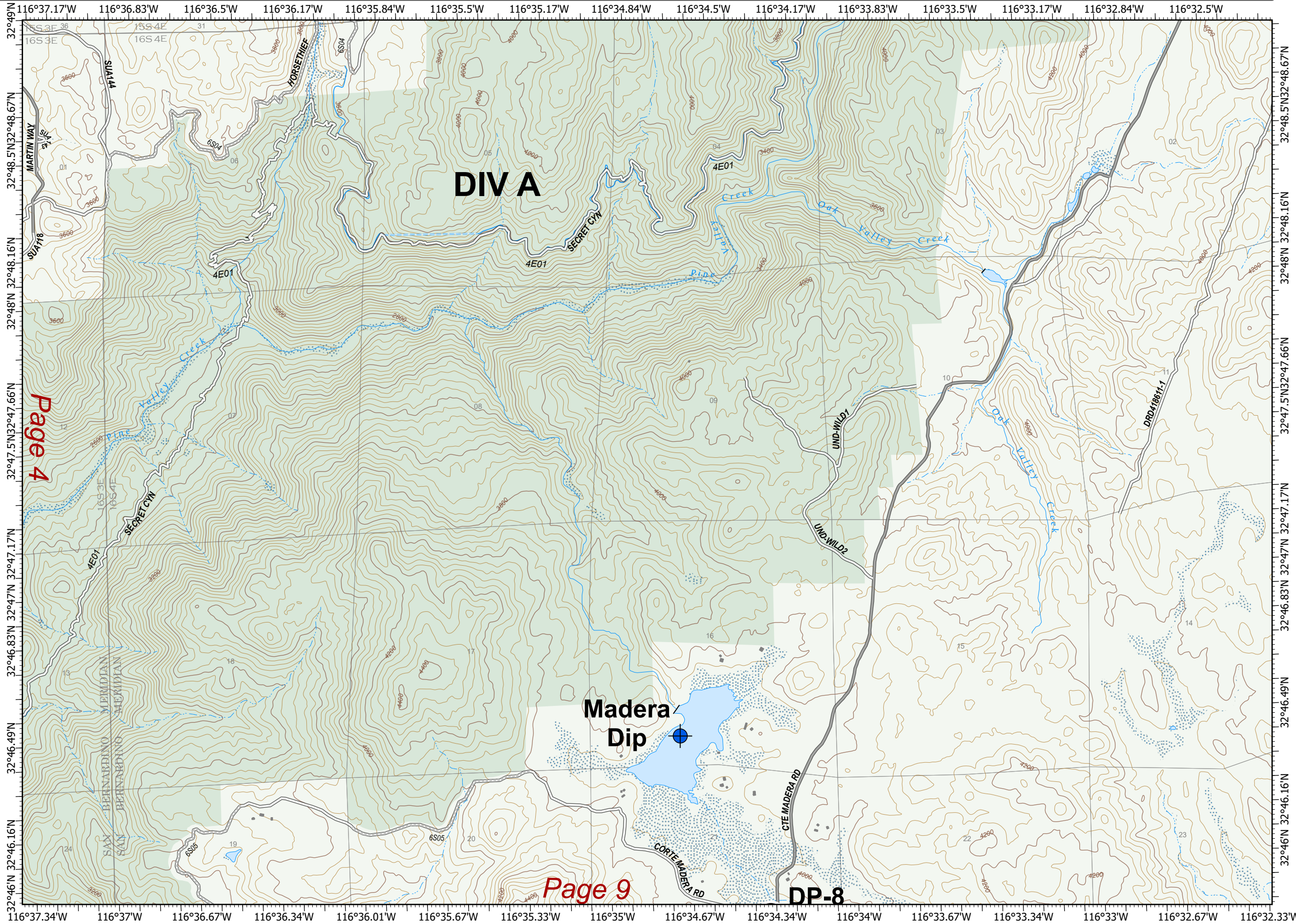
17,093 ac. as of
9/17/2020

Page 5

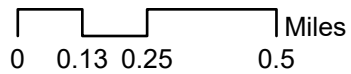
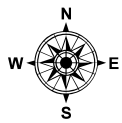
Division A

Valley Fire

CA-CNF-002833



- Bridge
- Dip Site
- Drop Point
- Gate
- Landmark
- Staging Area
- Division Break
- Contained Line
- Completed Dozer Line
- Completed Hand Line
- Aerial Retardant Drop
- Powerlines
- Cleveland National Forest



North American 1983 Datum. LatLong Grid

IAP

9/18/2020

17,093 ac. as of
9/17/2020

Page 6

Division M, D

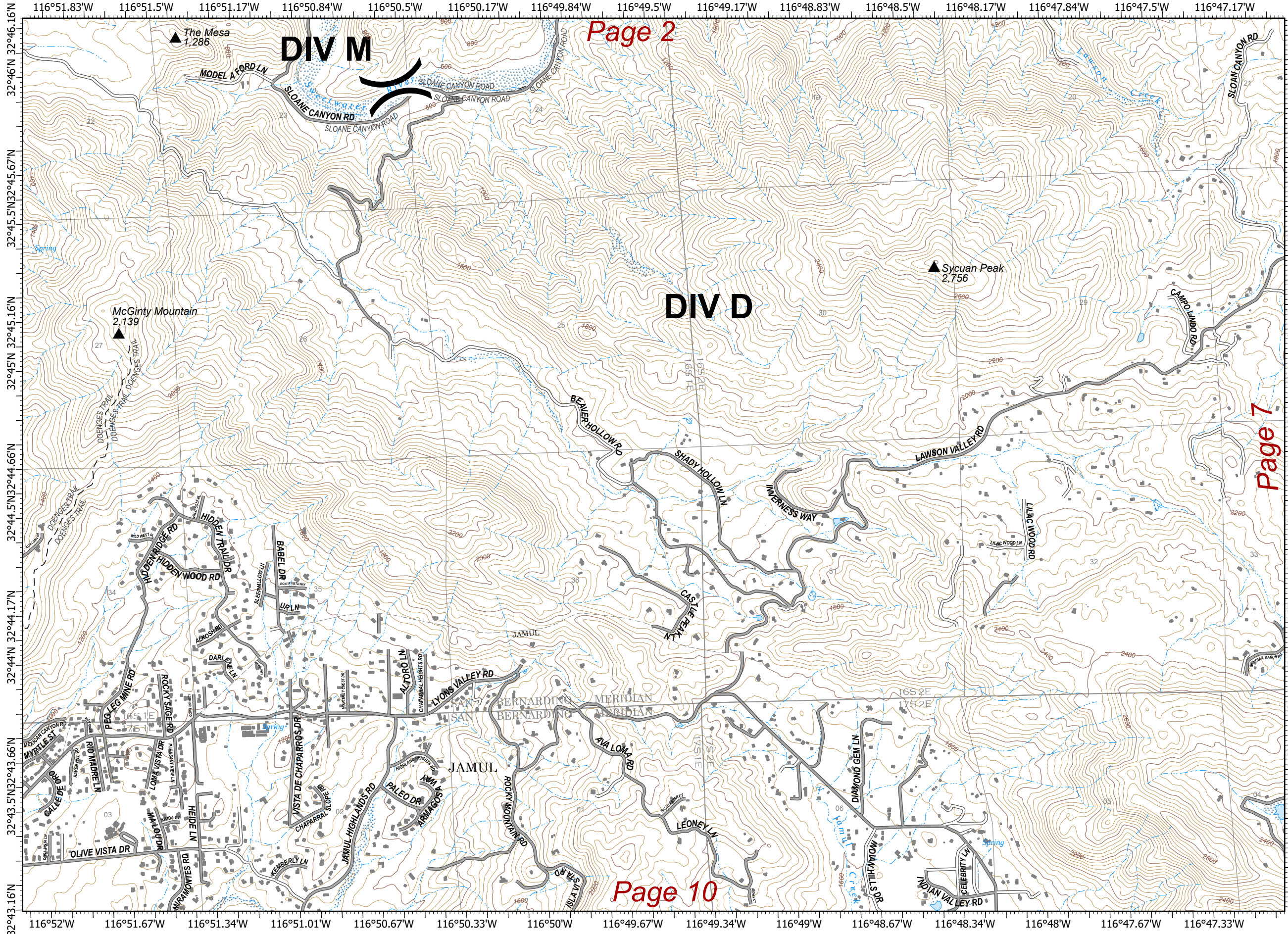
Valley Fire

CA-CNF-002833

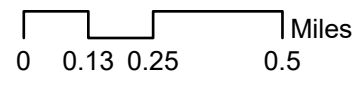
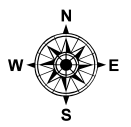
Page 2

Page 7

Page 10



- Bridge
- Dip Site
- Drop Point
- Gate
- Landmark
- Staging Area
- Division Break
- Contained Line
- Completed Dozer Line
- Completed Hand Line
- Aerial Retardant Drop
- Powerlines
- Cleveland National Forest



North American 1983 Datum. LatLong Grid

IAP

9/18/2020

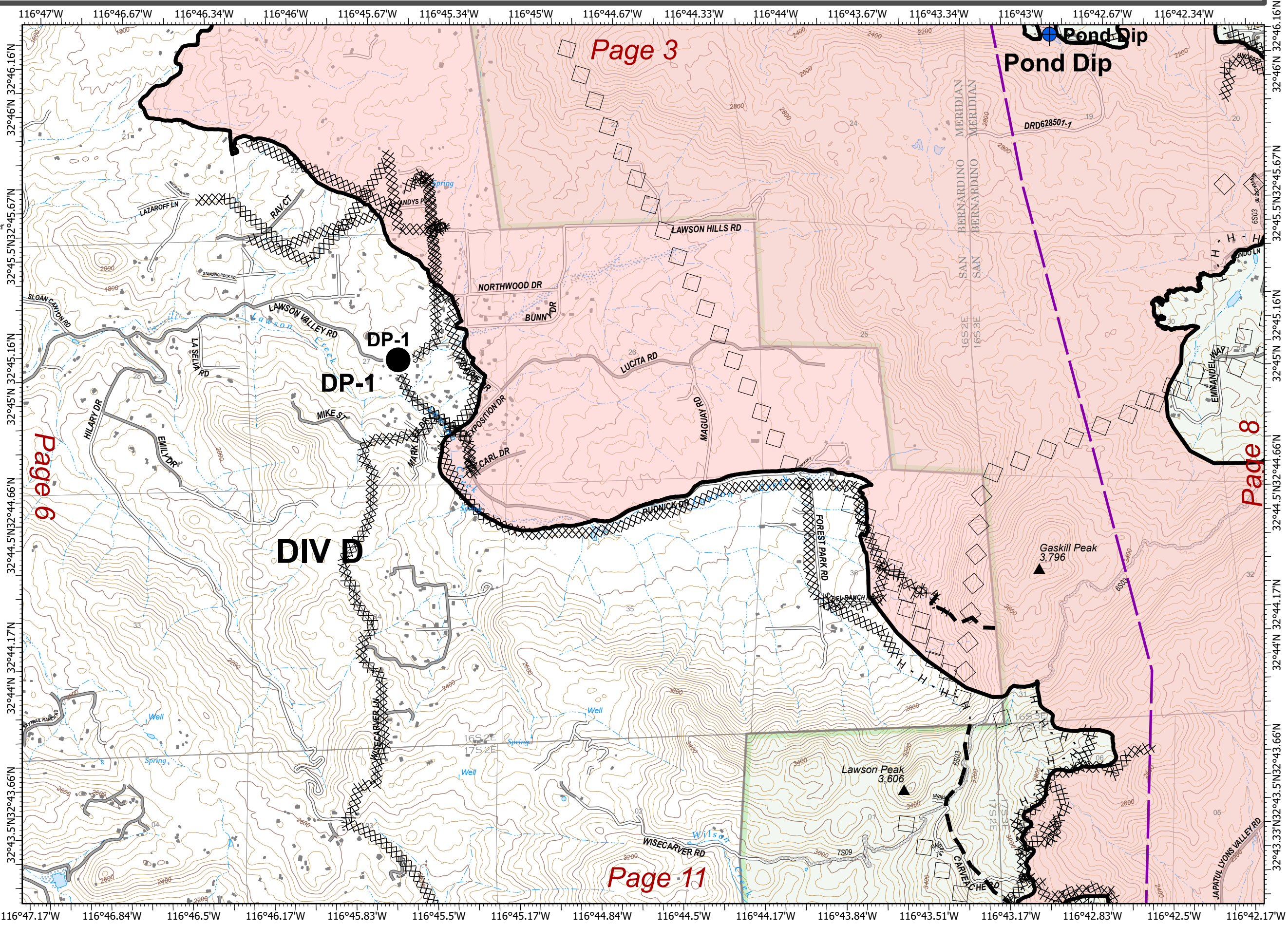
17,093 ac. as of
9/17/2020

Page 7

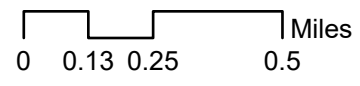
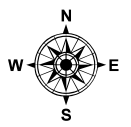
Division D

Valley Fire

CA-CNF-002833



- Bridge
- Dip Site
- Drop Point
- Gate
- Landmark
- Staging Area
- Division Break
- Contained Line
- Completed Dozer Line
- Completed Hand Line
- Aerial Retardant Drop
- Powerlines
- Cleveland National Forest
- Wildfire Daily Fire Perimeter



North American 1983 Datum. LatLong Grid

IAP

9/18/2020

17,093 ac. as of
9/17/2020

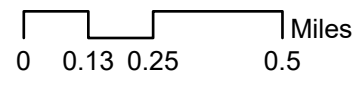
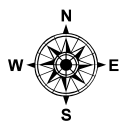
Page 8

Division Z, A, C

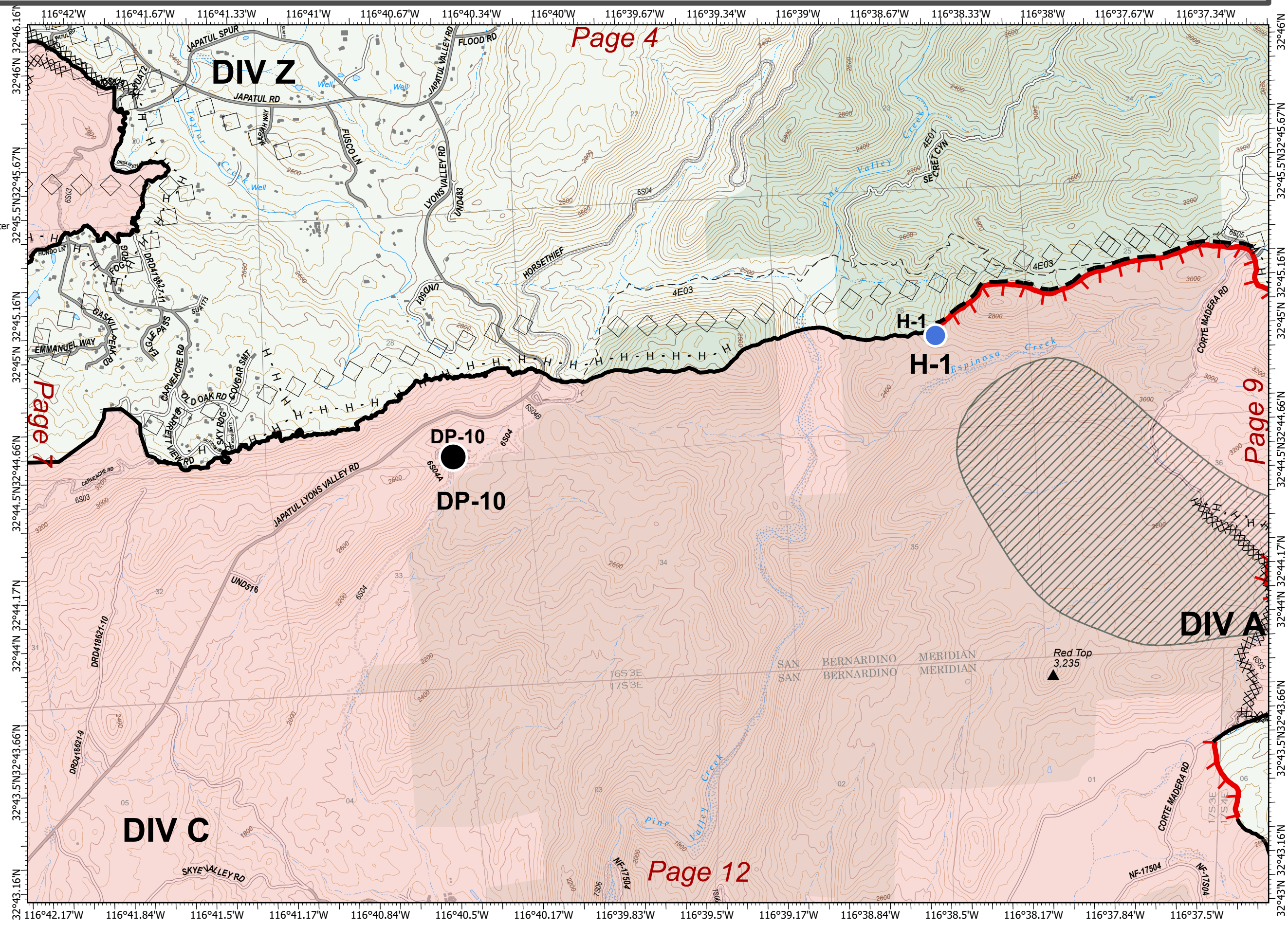
Valley Fire

CA-CNF-002833

- Bridge
- Dip Site
- Drop Point
- Gate
- Landmark
- Staging Area
- Division Break
- Contained Line
- Completed Dozer Line
- Completed Hand Line
- Aerial Retardant Drop
- Powerlines
- Cleveland National Forest
- Wildfire Daily Fire Perimeter
- Unburned Island



North American 1983 Datum. LatLong Grid



Page 4

Page 7

Page 9

Page 12

IAP

9/18/2020

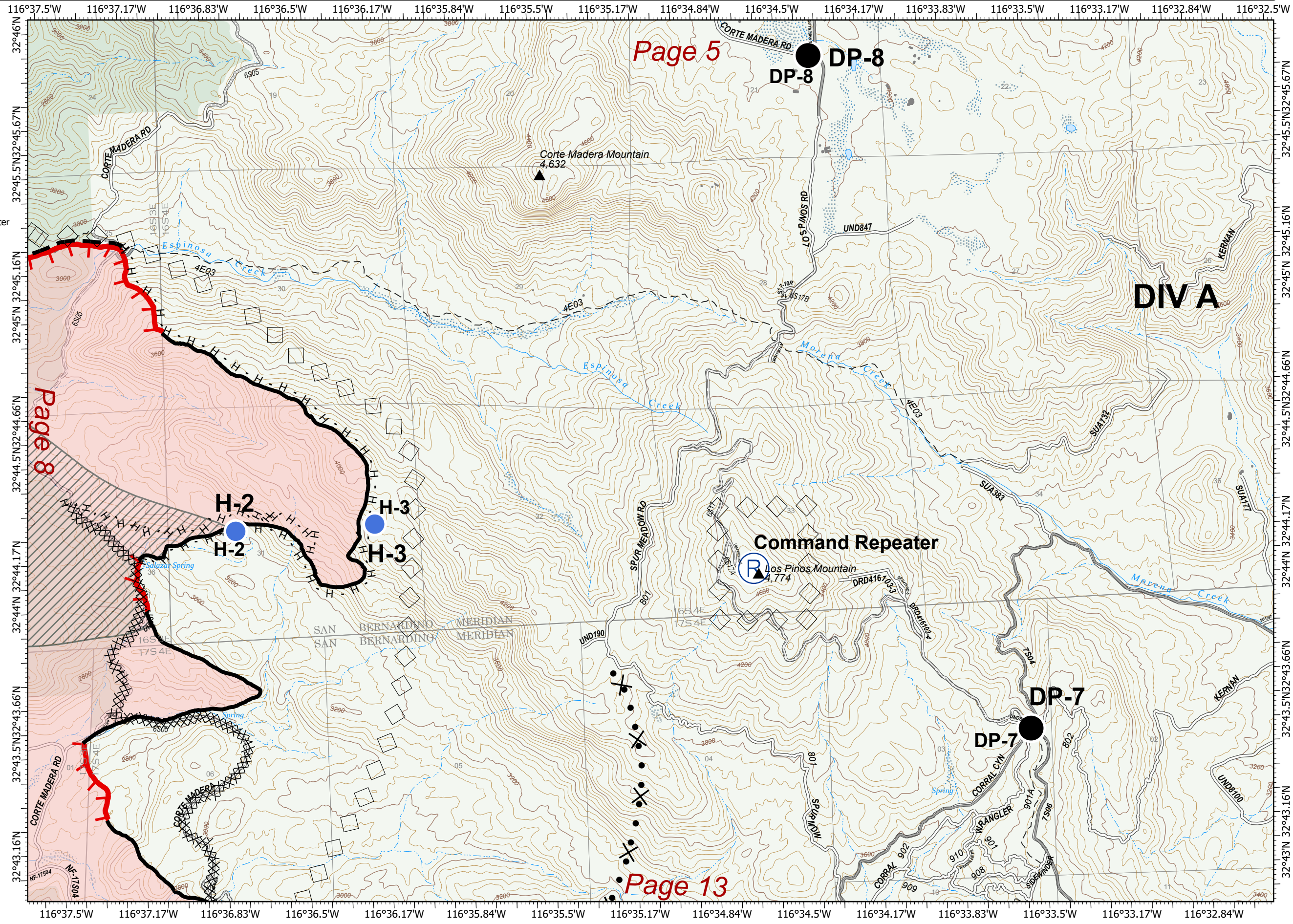
17,093 ac. as of
9/17/2020

Page 9

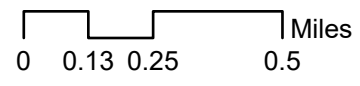
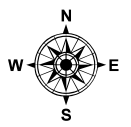
Division A

Valley Fire

CA-CNF-002833



- Bridge
- Dip Site
- Drop Point
- Gate
- Landmark
- Staging Area
- Division Break
- Contained Line
- Completed Dozer Line
- Completed Hand Line
- Aerial Retardant Drop
- Powerlines
- Cleveland National Forest
- Wildfire Daily Fire Perimeter
- Unburned Island



North American 1983 Datum. LatLong Grid

IAP

9/18/2020

17,093 ac. as of
9/17/2020

Page 10

Division D

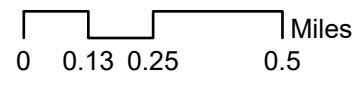
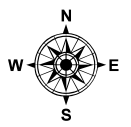
Valley Fire

CA-CNF-002833

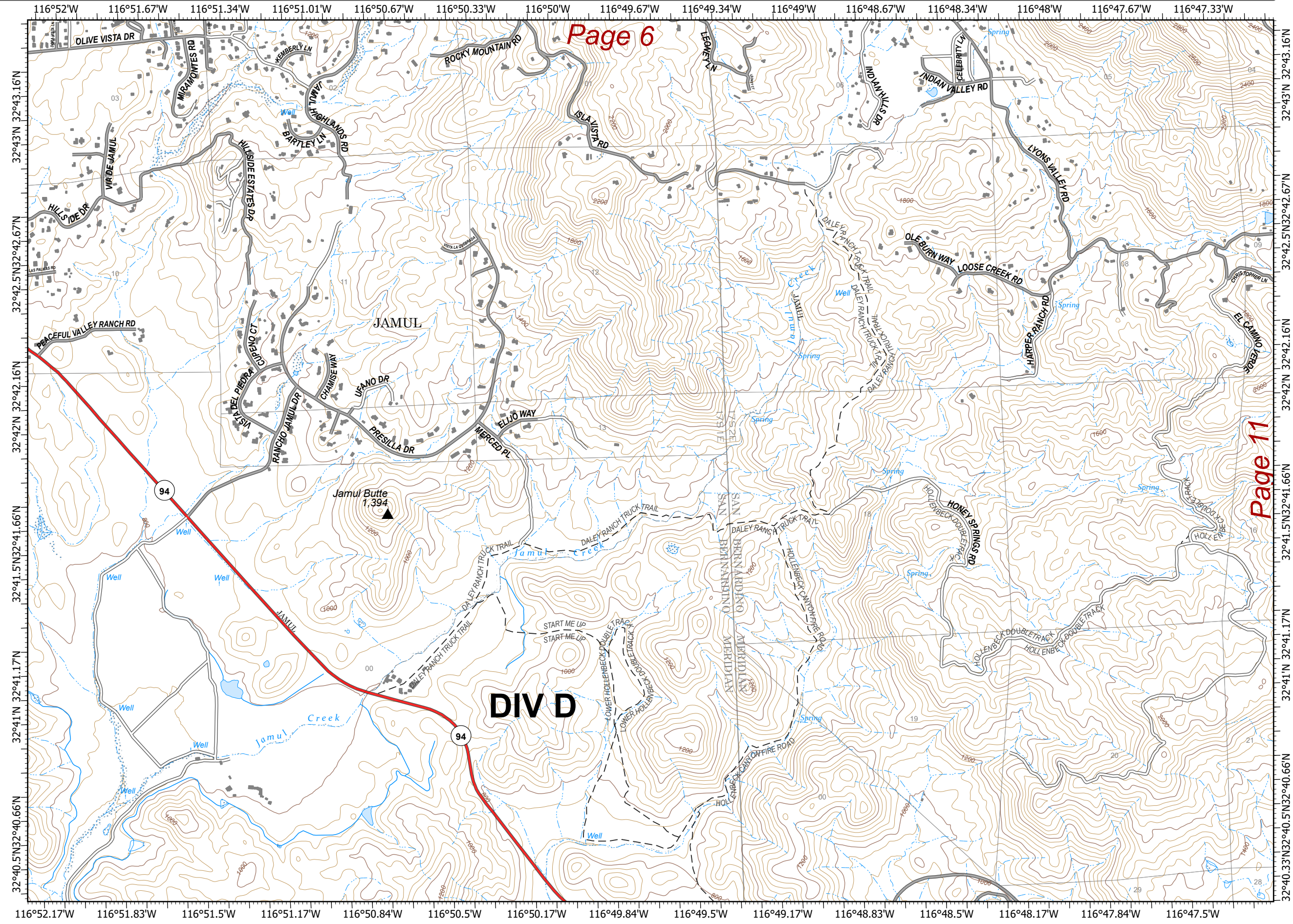
Page 6

Page 11

- Bridge
- Dip Site
- Drop Point
- Gate
- Landmark
- Staging Area
- Division Break
- Contained Line
- Completed Dozer Line
- Completed Hand Line
- Aerial Retardant Drop
- Powerlines
- Cleveland National Forest



North American 1983 Datum. LatLong Grid



IAP

9/18/2020

17,093 ac. as of
9/17/2020

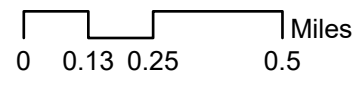
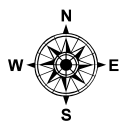
Page 11

Division D

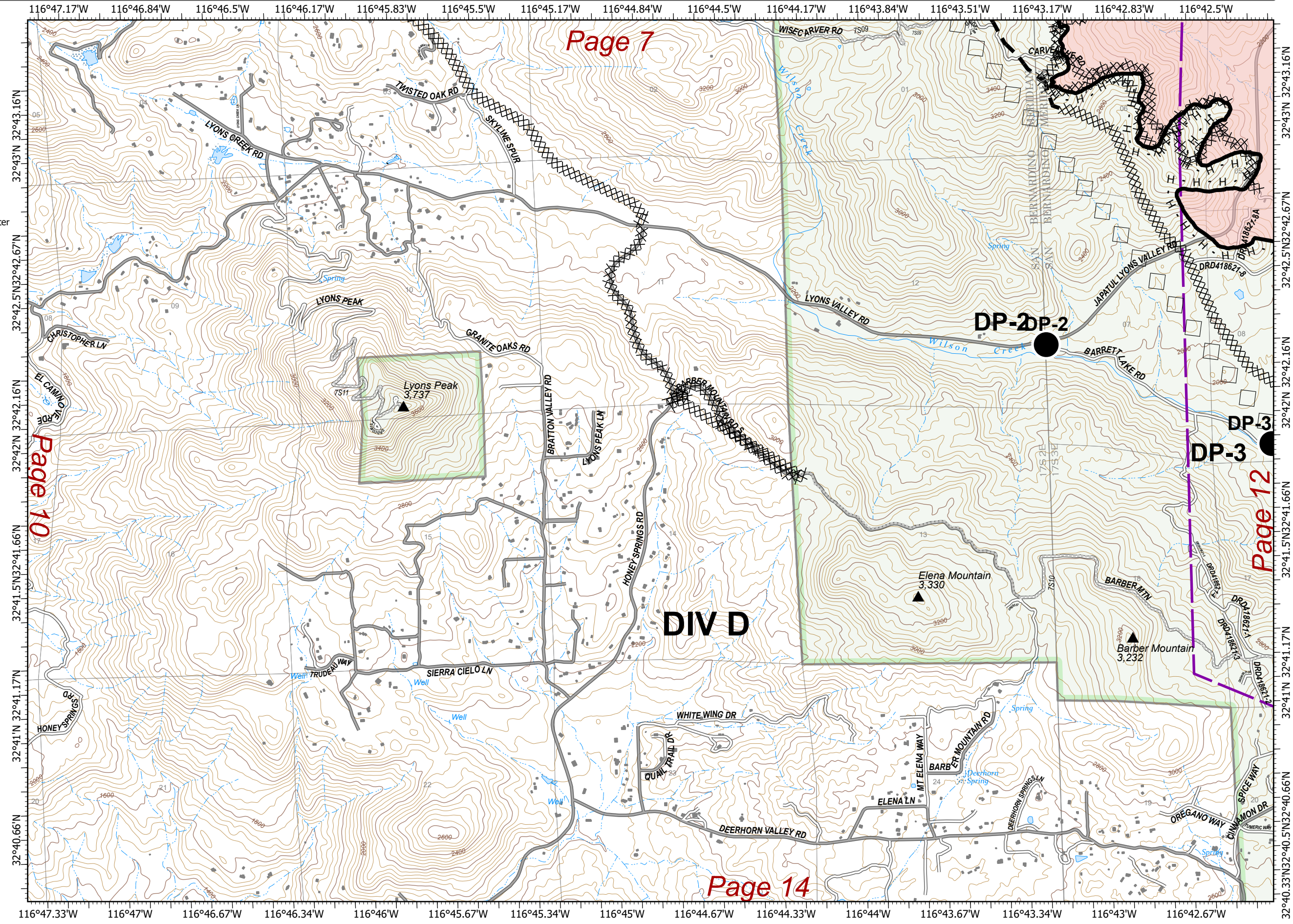
Valley Fire

CA-CNF-002833

- Bridge
- Dip Site
- Drop Point
- Gate
- Landmark
- Staging Area
- Division Break
- Contained Line
- Completed Dozer Line
- Completed Hand Line
- Aerial Retardant Drop
- Powerlines
- Cleveland National Forest
- Wildfire Daily Fire Perimeter



North American 1983 Datum. LatLong Grid



Page 10

Page 12

Page 14

IAP

9/18/2020

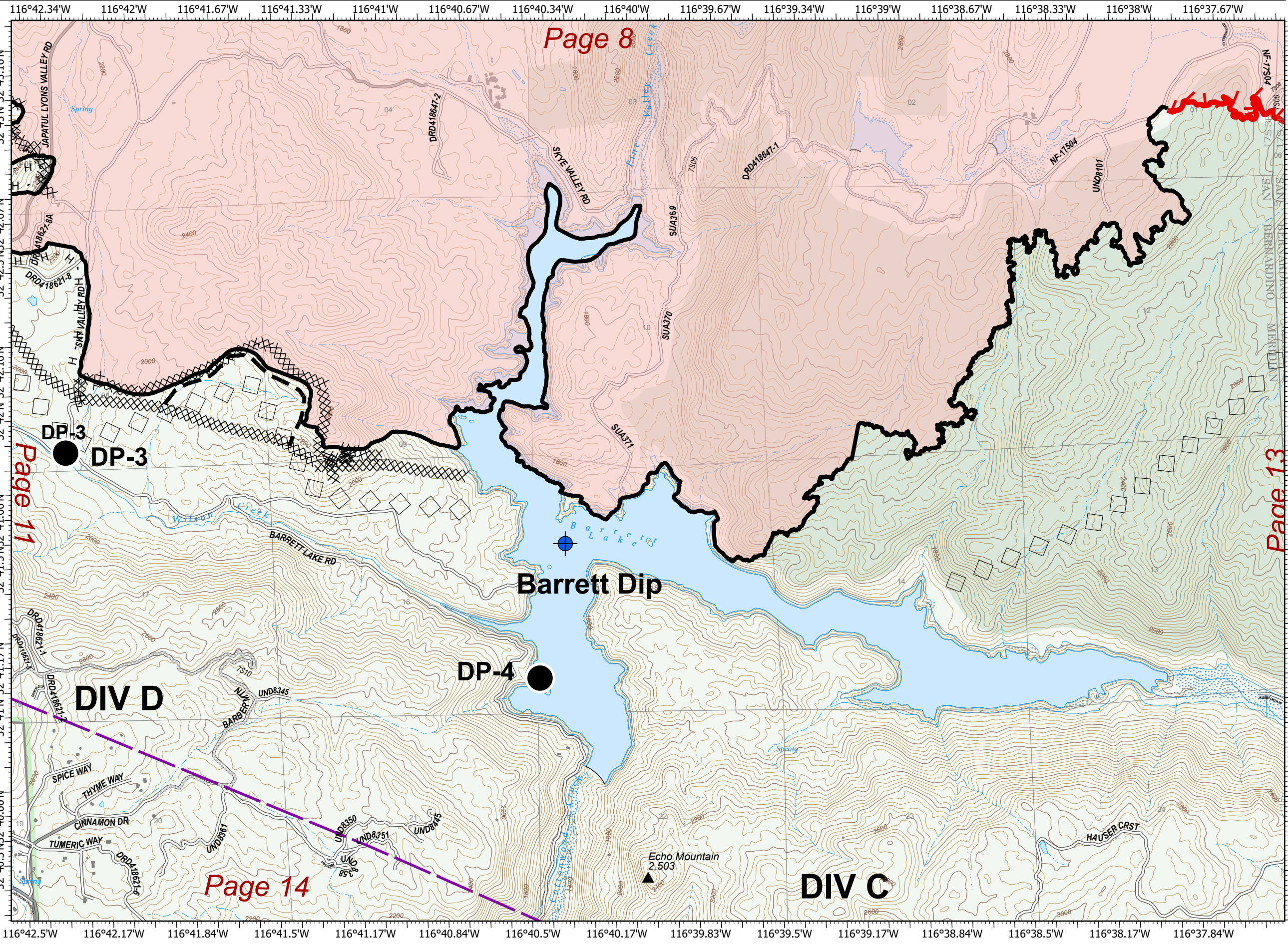
17,093 ac. as of
9/17/2020

Page 12

Division C, D

Valley Fire

CA-CNF-002833



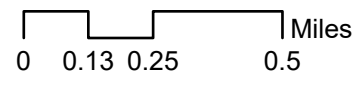
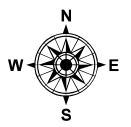
Page 8

Page 11

Page 13

Page 14

- Bridge
- Dip Site
- Drop Point
- Gate
- Landmark
- Staging Area
- Division Break
- Contained Line
- Completed Dozer Line
- Completed Hand Line
- Aerial Retardant Drop
- Powerlines
- Cleveland National Forest
- Wildfire Daily Fire Perimeter



North American 1983 Datum. LatLong Grid

IAP

9/18/2020

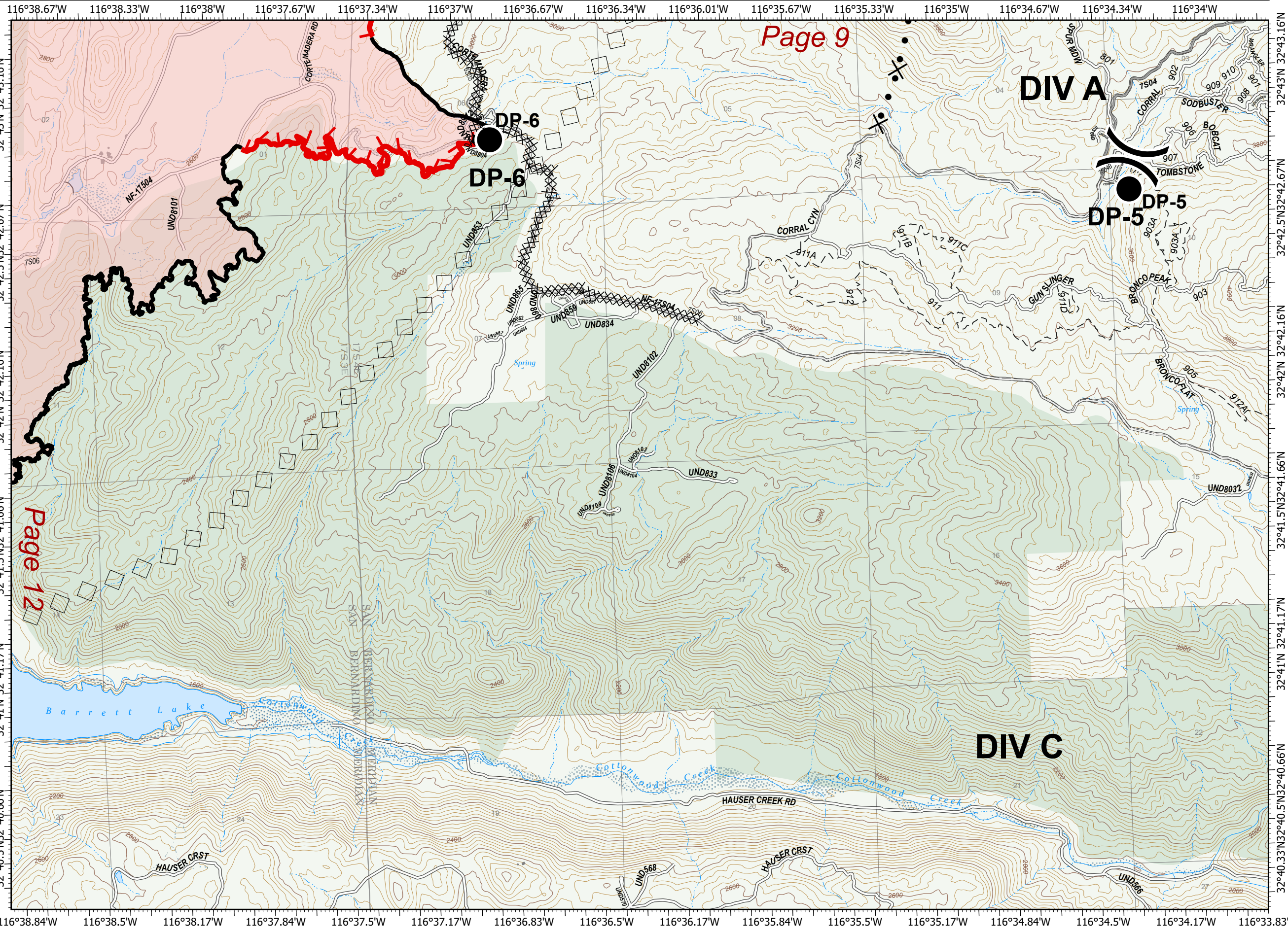
17,093 ac. as of
9/17/2020

Page 13

Division A, C

Valley Fire

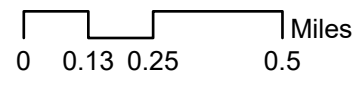
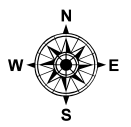
CA-CNF-002833



Page 9

Page 12

- Bridge
- Dip Site
- Drop Point
- Gate
- Landmark
- Staging Area
- Division Break
- Contained Line
- Completed Dozer Line
- Completed Hand Line
- Aerial Retardant Drop
- Powerlines
- Cleveland National Forest
- Wildfire Daily Fire Perimeter



North American 1983 Datum. LatLong Grid

IAP

9/18/2020

17,093 ac. as of
9/17/2020

Page 14

Division C, D

Valley Fire

CA-CNF-002833

Page 11

Page 12

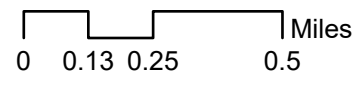
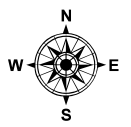
DIV C

DIV D

Mother Grundy Peak
3,068

White Mountain
3,271

- Bridge
- Dip Site
- Drop Point
- Gate
- Landmark
- Staging Area
- Division Break
- Contained Line
- Completed Dozer Line
- Completed Hand Line
- Aerial Retardant Drop
- Powerlines
- Cleveland National Forest



North American 1983 Datum. LatLong Grid

