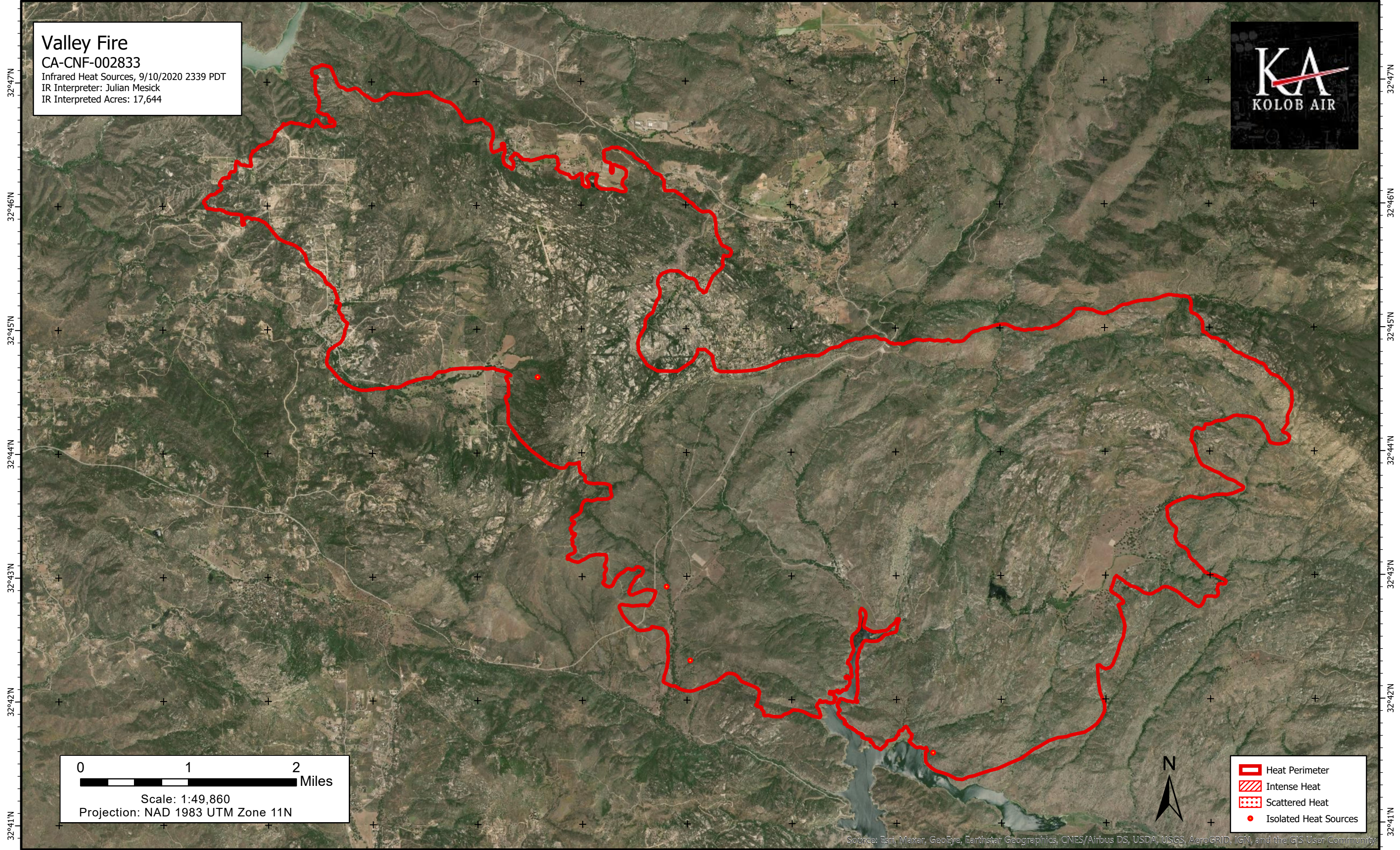






116°48'W 116°47'W 116°46'W 116°45'W 116°44'W 116°43'W 116°42'W 116°41'W 116°40'W 116°39'W 116°38'W 116°37'W 116°36'W

Valley Fire
CA-CNF-002833
Infrared Heat Sources, 9/10/2020 2339 PDT
IR Interpreter: Julian Mesick
IR Interpreted Acres: 17,644



0 1 2 Miles
Scale: 1:49,860
Projection: NAD 1983 UTM Zone 11N



-  Heat Perimeter
-  Intense Heat
-  Scattered Heat
-  Isolated Heat Sources

Source: Esri, Maxar, GeoEye, Earthstar Geographics, CNES/Airbus DS, USDA, USGS, AeroGRID, IGN, and the GIS User Community

116°48'W 116°47'W 116°46'W 116°45'W 116°44'W 116°43'W 116°42'W 116°41'W 116°40'W 116°39'W 116°38'W 116°37'W 116°36'W

32°47'N
32°46'N
32°45'N
32°44'N
32°43'N
32°42'N
32°41'N

32°47'N
32°46'N
32°45'N
32°44'N
32°43'N
32°42'N
32°41'N