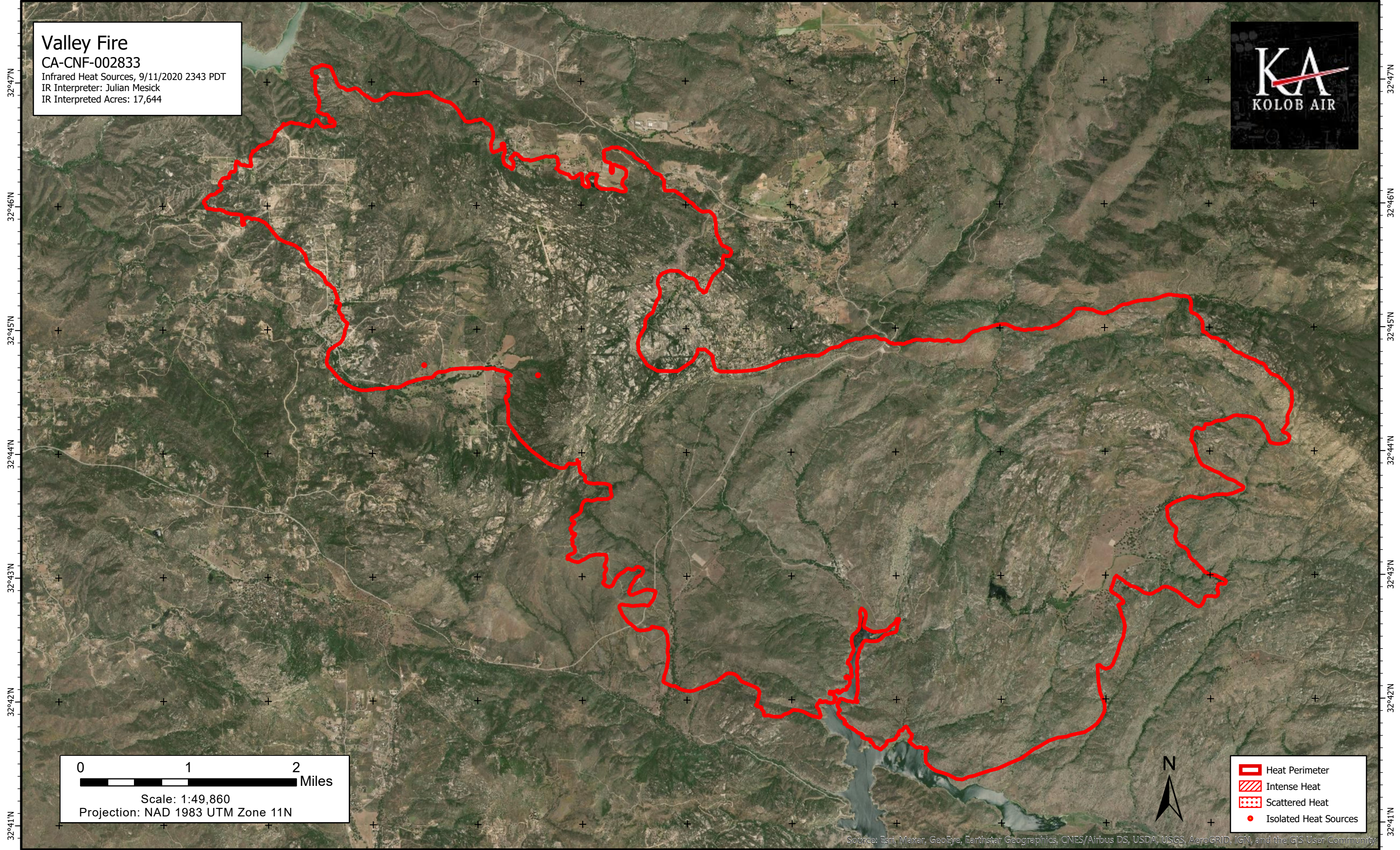


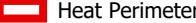



116°48'W 116°47'W 116°46'W 116°45'W 116°44'W 116°43'W 116°42'W 116°41'W 116°40'W 116°39'W 116°38'W 116°37'W 116°36'W

**Valley Fire**  
CA-CNF-002833  
Infrared Heat Sources, 9/11/2020 2343 PDT  
IR Interpreter: Julian Mesick  
IR Interpreted Acres: 17,644



0 1 2 Miles  
Scale: 1:49,860  
Projection: NAD 1983 UTM Zone 11N



-  Heat Perimeter
-  Intense Heat
-  Scattered Heat
-  Isolated Heat Sources

Source: Esri, Maxar, GeoEye, Earthstar Geographics, CNES/Airbus DS, USDA, USGS, AeroGRID, IGN, and the GIS User Community

116°48'W 116°47'W 116°46'W 116°45'W 116°44'W 116°43'W 116°42'W 116°41'W 116°40'W 116°39'W 116°38'W 116°37'W 116°36'W

32°47'N  
32°46'N  
32°45'N  
32°44'N  
32°43'N  
32°42'N  
32°41'N

32°47'N  
32°46'N  
32°45'N  
32°44'N  
32°43'N  
32°42'N  
32°41'N