

-119°1.5' -119°1' -119°0.5' -119° -118°59.5'

Beach Fire

CAINF002140

IAP

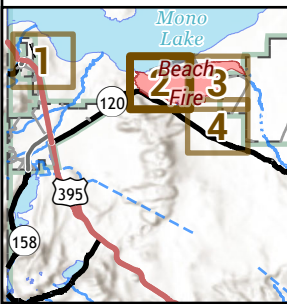
8/20/2020 Day

Page 2 of 4

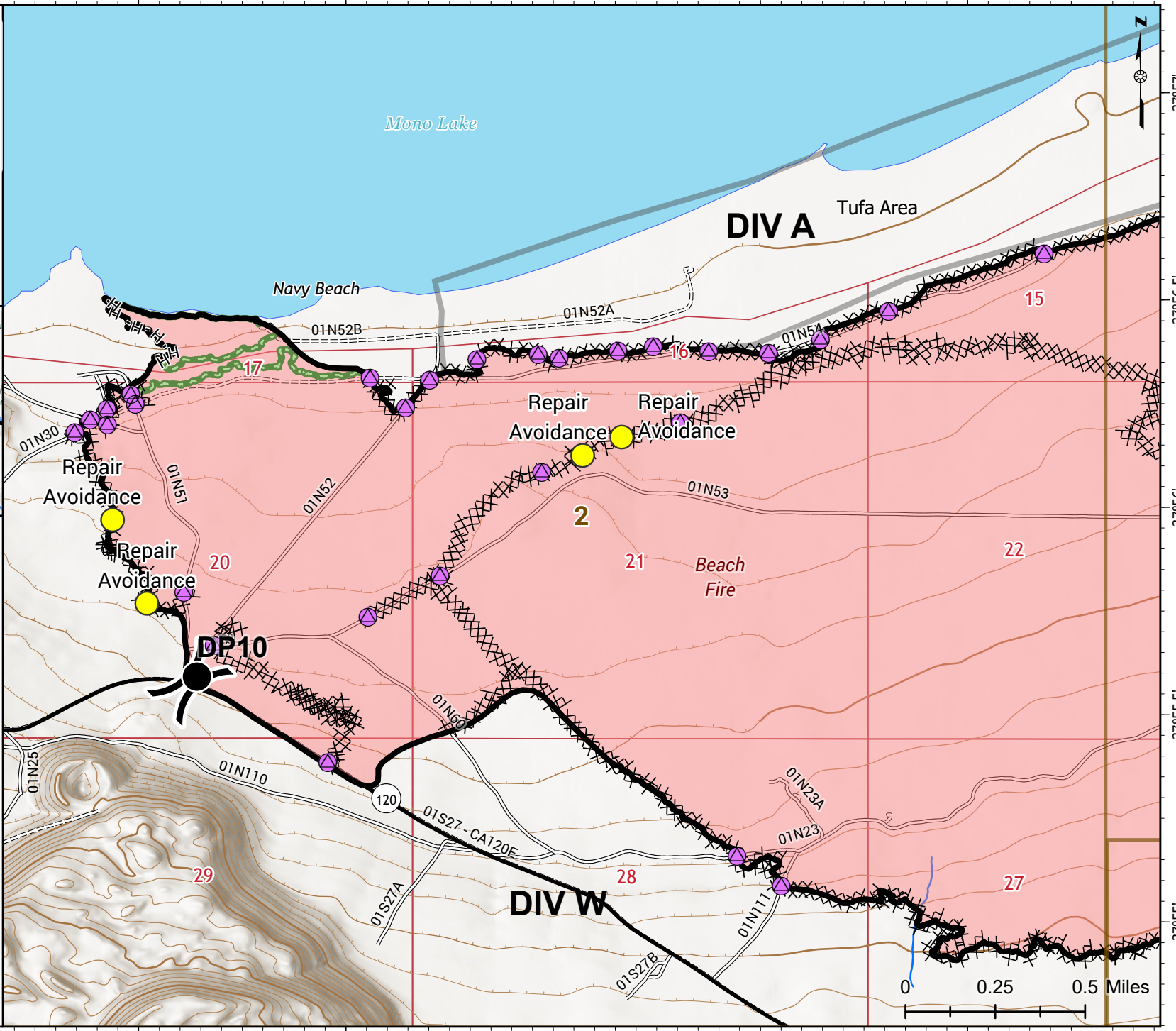
Produced: 8/19/2020 21:25



Use Avenza Maps App



- Local Connector
- Local Road
- 4WD
- Forest Service
- Drop Point
- Repair Point
- Repair Avoidance
- Division Break
- Contained Line
- Completed Dozer Line
- Completed Hand Line
- Cold Trail
- Wildfire Daily Fire Perimeter
- Tufa Area



-119°1.5' -119°1' -119°0.5' -119° -118°59.5'

37°57' 37°56.5' 37°56' 37°55.5' 37°55'

0 0.25 0.5 Miles