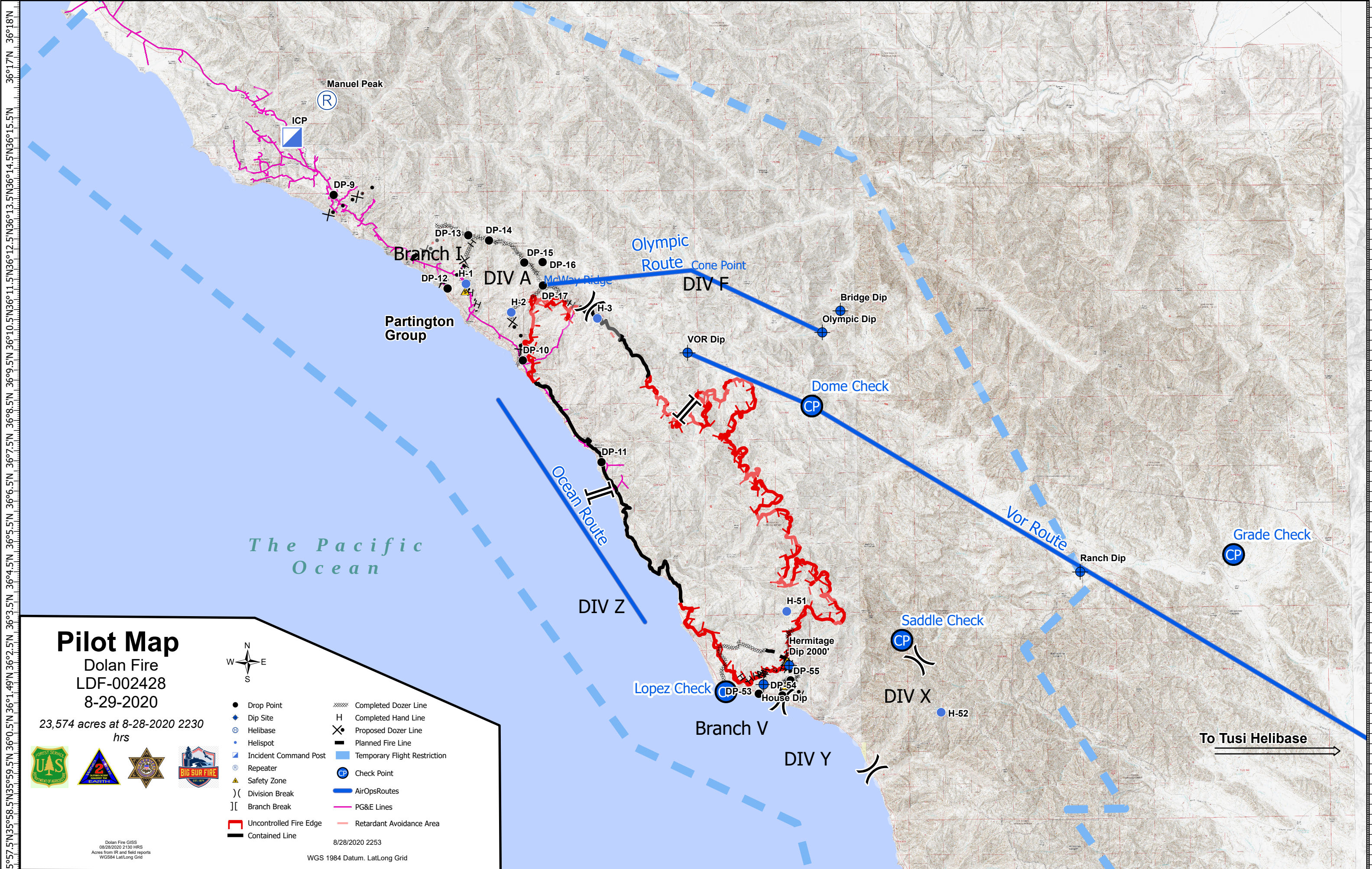


121°55'W 121°53'W 121°52'W 121°50.5'W 121°49'W 121°47.5'W 121°46'W 121°44.5'W 121°43'W 121°41.5'W 121°40'W 121°38.5'W 121°37'W 121°35.5'W 121°34'W 121°32.5'W 121°31'W 121°29.5'W 121°28'W 121°26.5'W 121°25'W 121°23.5'W 121°22'W 121°20.5'W 121°19'W 121°17.5'W 121°16'W 121°14.5'W



121°55.5'W 121°54'W 121°52.5'W 121°50.5'W 121°49'W 121°47.5'W 121°46'W 121°44.5'W 121°43'W 121°41.5'W 121°40'W 121°38.5'W 121°37'W 121°35.5'W 121°34'W 121°32.5'W 121°31'W 121°29.5'W 121°28'W 121°26.5'W 121°25'W 121°23.5'W 121°22'W 121°20.5'W 121°19'W 121°17.5'W 121°16'W

Pilot Map

Dolan Fire
LDF-002428
8-29-2020

23,574 acres at 8-28-2020 2230 hrs



- Drop Point
- ⊕ Dip Site
- ⊕ Helibase
- Helispot
- ⊠ Incident Command Post
- Ⓜ Repeater
- ▲ Safety Zone
-) (Division Break
- [[Branch Break
- ┌ Uncontrolled Fire Edge
- ▬ Contained Line
- ▬ Completed Dozer Line
- H Completed Hand Line
- ⊗ Proposed Dozer Line
- ▬ Planned Fire Line
- ▬ Temporary Flight Restriction
- Ⓞ Check Point
- ▬ AirOpsRoutes
- ▬ PG&E Lines
- ▬ Retardant Avoidance Area

8/28/2020 2253
WGS 1984 Datum, LatLong Grid

Dolan Fire GIS
08/28/2020 21:30 HRS
Acres from IR and field reports
WGS84 Lat/Long Grid

To Tusi Helibase →