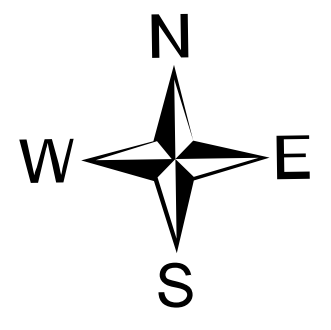


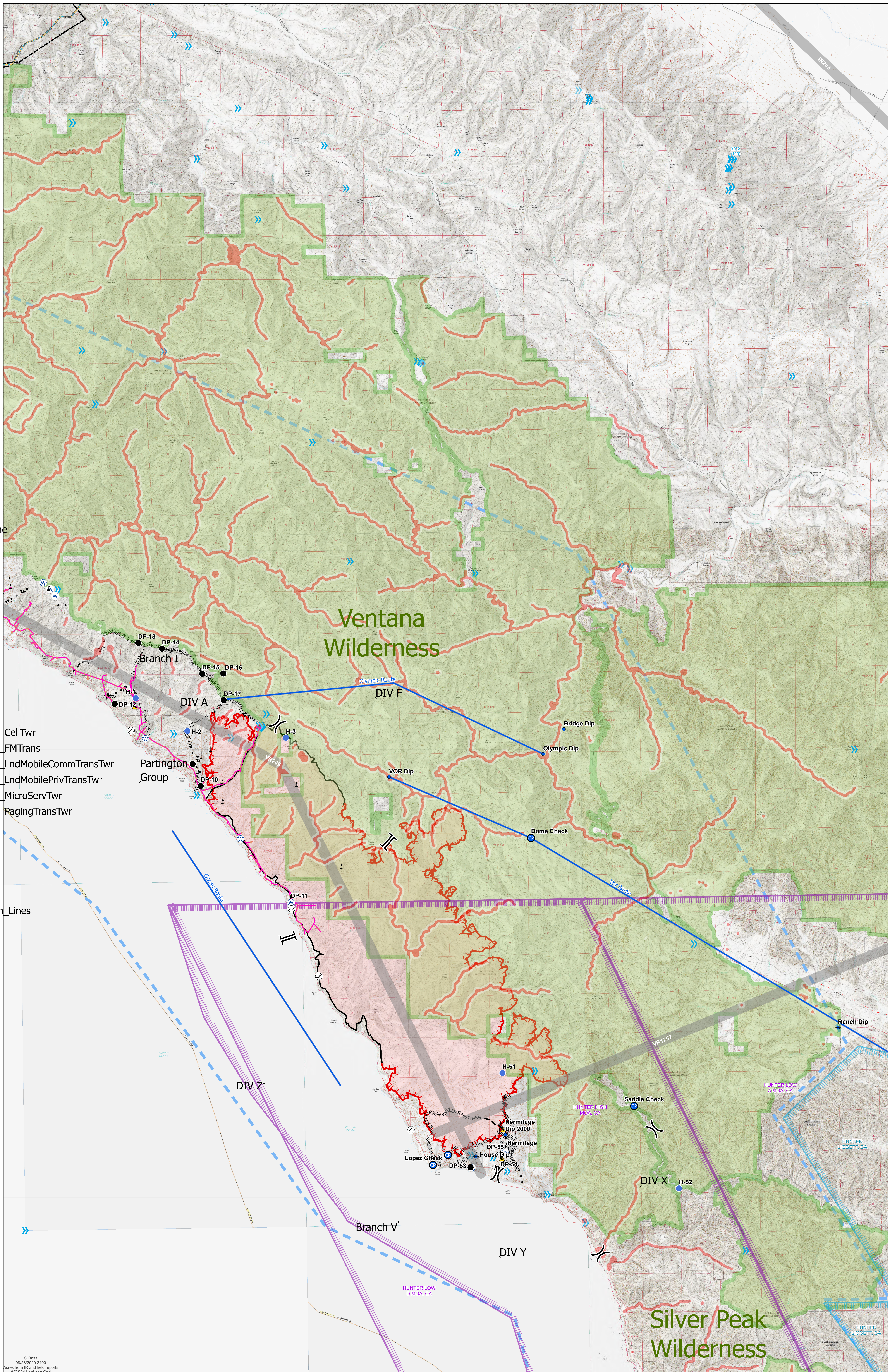
Air Ops  
Dolan  
LPF-002428  
08/29/2020 Day

Approx. 23,574 ac at  
08/28/2020



3  
Miles

- AirOpsRoutes
- Distribution Lines
- PartingtonRidgeTransmissionLine
- Wilderness
- AviationObstacle\_Ln\_2019\_Local  
HazardType
- Powerline
- Telephone wires
- AviationObstacle\_Pt\_2018\_NIFC\_R5  
AGL\_RngSrt
- 4 51-75 ft
- 6 101-200 ft
- AviationObstacle\_Ln\_2018\_NIFC\_R5  
ObName
- Military Training Route
- Power Transmission Line
- Power Transmission Line
- AviationObstacle\_Pt\_HSIP2019\_CellTwr
- AviationObstacle\_Pt\_HSIP2019\_FMTTrans
- AviationObstacle\_Pt\_HSIP2019\_LndMobileCommTransTwr
- AviationObstacle\_Pt\_HSIP2019\_LndMobilePrivTransTwr
- AviationObstacle\_Pt\_HSIP2019\_MicroServTwr
- AviationObstacle\_Pt\_HSIP2019\_PagingTransTwr
- AviationActivity\_PL\_06292018  
TYPE
- M
- R
- 33 - 92
- Transmission
- California\_Electric\_Transmission\_Lines
- 33 - 92
- Smaller than 110 kV
- RetardantAvoidance
- Dip Site
- Drop Point
- Dozer Push
- Gate
- Helispot
- Internet Access
- Safety Zone
- Water Source
- Value at Risk
- Other
- Division Break
- Branch Break



© Bess  
08/28/2020 2400  
Acres from IR and field reports  
WCS84 Lat/Long Grid

| Feature                   | Category | Label               | Comments                       | LatWGS84_DDM  | LongWGS84_DDM  |
|---------------------------|----------|---------------------|--------------------------------|---------------|----------------|
| Camp                      |          |                     |                                | 35° 56.017' N | 121° 28.076' W |
| Dip Site                  |          | Hermitage Dip 2000' |                                | 36° 01.930' N | 121° 32.171' W |
| Dip Site                  |          | Ranch Dip           | it's delicious!                | 36° 04.140' N | 121° 23.248' W |
| Dip Site                  |          | House Dip           |                                | 36° 01.470' N | 121° 32.961' W |
| Dip Site                  |          | Bridge Dip          |                                | 36° 10.700' N | 121° 30.440' W |
| Dip Site                  |          | VOR Dip             |                                | 36° 09.720' N | 121° 35.130' W |
| Dip Site                  |          | Olympic Dip         |                                | 36° 10.167' N | 121° 31.003' W |
| Drop Point                |          | DP-9                |                                | 36° 13.743' N | 121° 45.879' W |
| Drop Point                |          | DP-11               |                                | 36° 07.038' N | 121° 37.804' W |
| Drop Point                |          | DP-10               |                                | 36° 09.582' N | 121° 40.164' W |
| Drop Point                |          | DP-12               |                                | 36° 11.388' N | 121° 42.434' W |
| Drop Point                |          | DP-53               |                                | 36° 01.236' N | 121° 33.109' W |
| Drop Point                |          | DP-54               |                                | 36° 01.186' N | 121° 32.393' W |
| Drop Point                |          | DP-55               |                                | 36° 01.557' N | 121° 32.133' W |
| Drop Point                |          | DP-13               |                                | 36° 12.700' N | 121° 41.781' W |
| Drop Point                |          | DP-14               |                                | 36° 12.567' N | 121° 41.149' W |
| Drop Point                |          | DP-15               |                                | 36° 12.012' N | 121° 40.081' W |
| Drop Point                |          | DP-16               |                                | 36° 12.012' N | 121° 39.519' W |
| Drop Point                |          | DP-17               |                                | 36° 11.433' N | 121° 39.519' W |
| Helibase                  |          | Tusi Helibase       |                                | 35° 59.687' N | 121° 14.202' W |
| Helispot                  |          | H-1                 |                                | 36° 11.501' N | 121° 41.871' W |
| Helispot                  |          | PV-Helispot         |                                | 35° 55.957' N | 121° 28.158' W |
| Helispot                  |          | H-51                |                                | 36° 03.270' N | 121° 32.220' W |
| Helispot                  |          | H-52                |                                | 36° 00.710' N | 121° 27.560' W |
| Helispot                  |          | H-2                 |                                | 36° 10.780' N | 121° 40.500' W |
| Helispot                  |          | H-3                 |                                | 36° 10.600' N | 121° 37.870' W |
| Incident Command Post ICP |          |                     | Big Sur Lodge                  | 36° 15.189' N | 121° 47.129' W |
| Other                     |          | Grade Check         |                                | 36° 04.500' N | 121° 18.560' W |
| Other                     |          | Saddle Check        |                                | 36° 02.510' N | 121° 28.720' W |
| Other                     |          | Dome Check          |                                | 36° 08.350' N | 121° 31.360' W |
| Other                     |          | Lopez Check         |                                | 36° 01.300' N | 121° 34.110' W |
| Repeater                  |          | Manuel Peak         |                                | 36° 16.095' N | 121° 46.048' W |
| Safety Zone               |          |                     |                                | 36° 11.314' N | 121° 41.897' W |
| Safety Zone               |          |                     | Safety Zone or Deployment Site | 36° 01.417' N | 121° 32.271' W |
| Safety Zone               |          |                     | Referred to as the "Meadow"    | 36° 02.037' N | 121° 32.226' W |