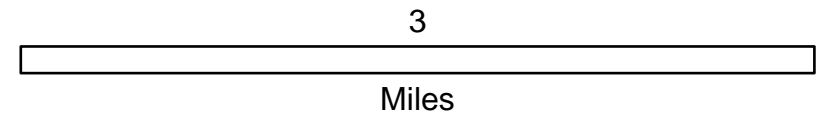
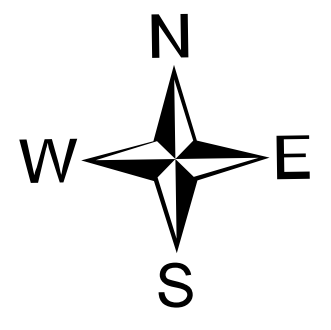
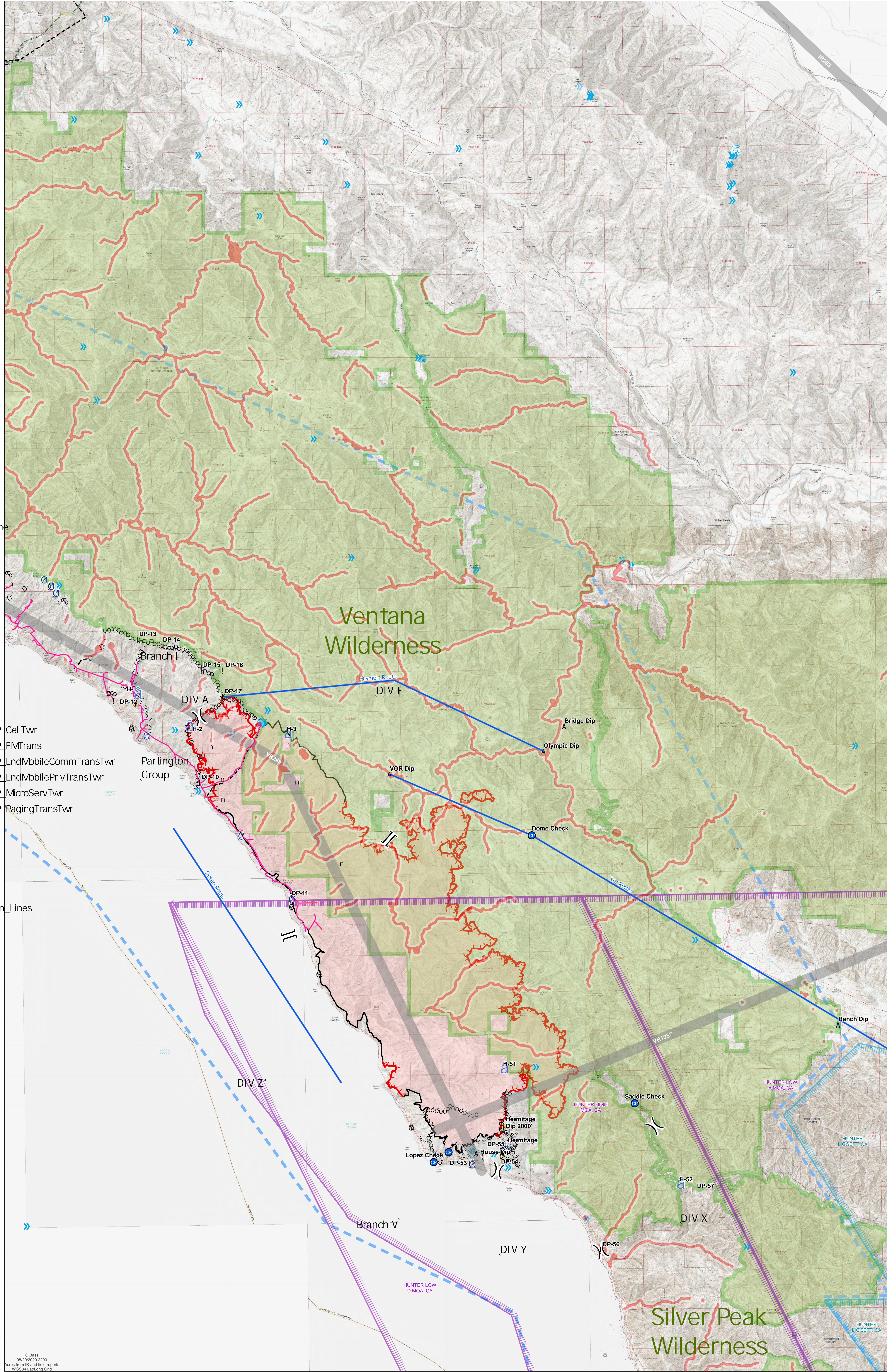


Air Ops
 Dolan
 LPF-002428
 08/30/2020 Day

Approx. 25,568 ac at
 08/29/2020



- AirOpsRoutes
- Distribution Lines
- PartingtonRidgeTransmissionLine
- Wilderness
- AviationObstacle_Ln_2019_Local
HazardType
- Powerline
- Telephone wires
- AviationObstacle_Pt_2018_NIFC_R5
AGL_RngSrt
- >> 4 51-75 ft
- >> 6 101-200 ft
- AviationObstacle_Ln_2018_NIFC_R5
ObName
- Military Training Route
- Power Transmission Line
- Power Transmission Line
- >> AviationObstacle_Pt_HSIP2019_CellTwr
- >> AviationObstacle_Pt_HSIP2019_FMTrans
- >> AviationObstacle_Pt_HSIP2019_LndMvbleCommTransTwr
- >> AviationObstacle_Pt_HSIP2019_LndMvblePrivTransTwr
- >> AviationObstacle_Pt_HSIP2019_McroServTwr
- >> AviationObstacle_Pt_HSIP2019_PagingTransTwr
- AviationActivity_Pt_06292018
TYPE
- M
- R
- 33 - 92
- Transmission
- California_Electric_Transmission_Lines
- 33 - 92
- Smaller than 110 KV
- RetardantAvoidance
- A Dip Site
- ! Drop Point
- a Dozer Push
- G Gate
- H Helispot
- @ Internet Access
- \$ Safety Zone
- O Water Source
- n Value at Risk
- Other
-) Division Break
- | Branch Break



© Bess
 08/29/2020 2200
 Acres from IR and field reports
 WGS84 Lat/Long Grid

FeatureCategory	Label	Comments	LatWGS84_DDM	LongWGS84_DDM
Camp			35° 56.017' N	121° 28.076' W
Dip Site	Hermitage Dip 2000'		36° 01.930' N	121° 32.171' W
Dip Site	Ranch Dip	it's delicious!	36° 04.140' N	121° 23.248' W
Dip Site	House Dip		36° 01.470' N	121° 32.961' W
Dip Site	Bridge Dip		36° 10.700' N	121° 30.440' W
Dip Site	VOR Dip		36° 09.720' N	121° 35.130' W
Dip Site	Olympic Dip		36° 10.167' N	121° 31.003' W
Drop Point	DP-9		36° 13.743' N	121° 45.879' W
Drop Point	DP-11		36° 07.038' N	121° 37.804' W
Drop Point	DP-10		36° 09.582' N	121° 40.164' W
Drop Point	DP-12		36° 11.388' N	121° 42.434' W
Drop Point	DP-53		36° 01.236' N	121° 33.109' W
Drop Point	DP-54		36° 01.186' N	121° 32.393' W
Drop Point	DP-55		36° 01.557' N	121° 32.133' W
Drop Point	DP-13		36° 12.700' N	121° 41.781' W
Drop Point	DP-14		36° 12.567' N	121° 41.149' W
Drop Point	DP-15		36° 12.012' N	121° 40.081' W
Drop Point	DP-16		36° 12.012' N	121° 39.519' W
Drop Point	DP-17		36° 11.433' N	121° 39.519' W
Drop Point	DP-57		36° 0.588' N	121° 27.113' W
Drop Point	DP-56		35° 59.330' N	121° 29.643' W
Helibase	Tusi Helibase		35° 59.687' N	121° 14.202' W
Helispot	H-1		36° 11.501' N	121° 41.871' W
Helispot	PV-Helispot		35° 55.957' N	121° 28.158' W
Helispot	H-51		36° 03.270' N	121° 32.220' W
Helispot	H-52		36° 00.710' N	121° 27.560' W
Helispot	H-2		36° 10.780' N	121° 40.500' W
Helispot	H-3		36° 10.600' N	121° 37.870' W
Incident Command Post ICP		Big Sur Lodge	36° 15.189' N	121° 47.129' W
Other	Dome Check		36° 08.350' N	121° 31.360' W
Other	Lopez Check		36° 01.300' N	121° 34.110' W
Repeater	Manuel Peak		36° 16.095' N	121° 46.048' W
Safety Zone			36° 11.314' N	121° 41.897' W
Safety Zone		Safety Zone or Deployment Site	36° 01.417' N	121° 32.271' W
Safety Zone		Referred to as the "Meadow"	36° 02.037' N	121° 32.226' W