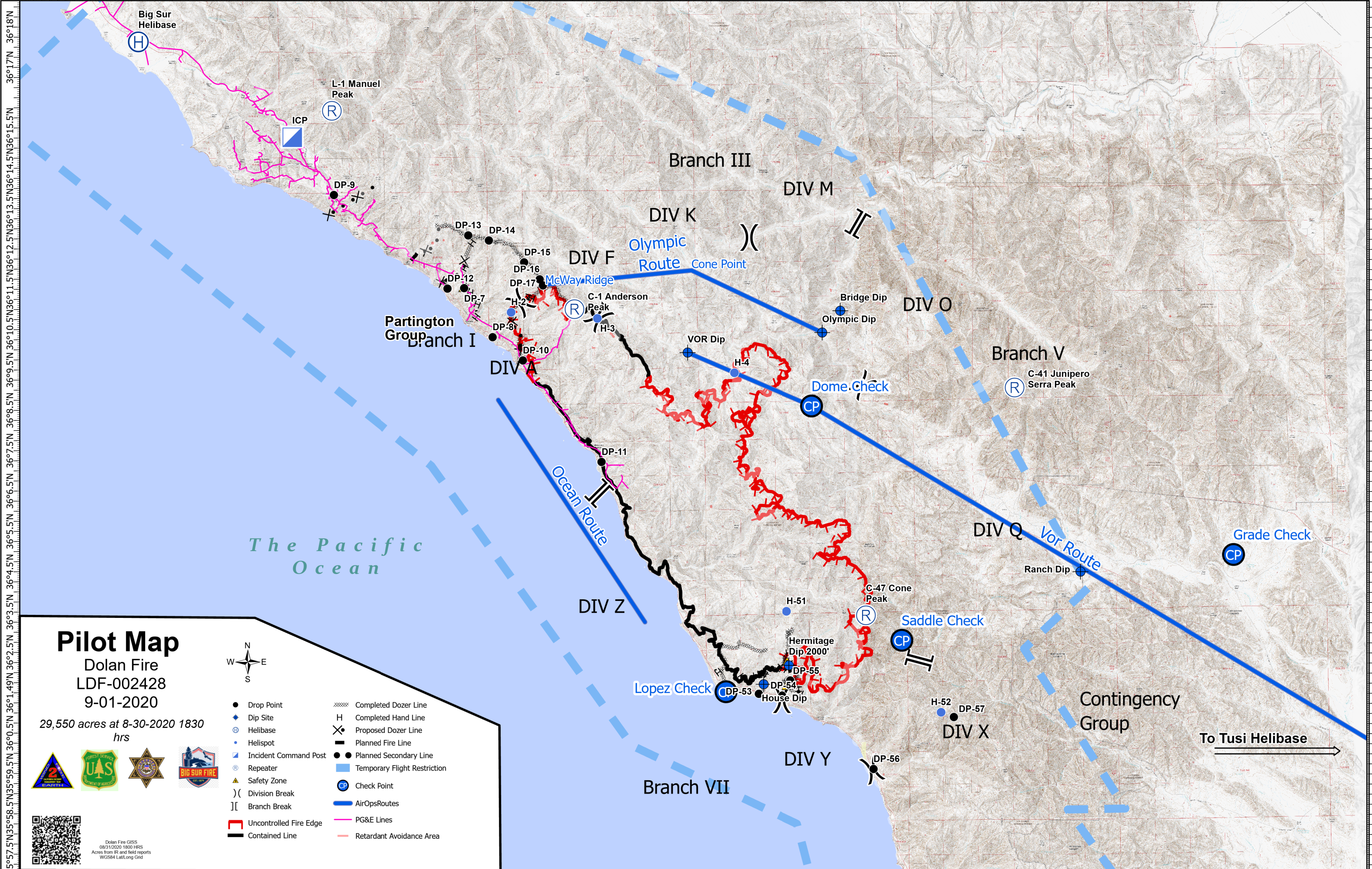


121°55'W 121°53.5'W 121°52'W 121°50.5'W 121°49'W 121°47.5'W 121°46'W 121°44.5'W 121°43'W 121°41.5'W 121°40'W 121°38.5'W 121°37'W 121°35.5'W 121°34'W 121°32.5'W 121°31'W 121°29.5'W 121°28'W 121°26.5'W 121°25'W 121°23.5'W 121°22'W 121°20.5'W 121°19'W 121°17.5'W 121°16'W 121°14.5'W



121°55.5'W 121°54'W 121°52.5'W 121°50.5'W 121°49'W 121°47.5'W 121°46'W 121°44.5'W 121°43'W 121°41.5'W 121°40'W 121°38.5'W 121°37'W 121°35.5'W 121°34'W 121°32.5'W 121°31'W 121°29.5'W 121°28'W 121°26.5'W 121°25'W 121°23.5'W 121°22'W 121°20.5'W 121°19'W 121°17.5'W 121°16'W

# Pilot Map

Dolan Fire  
LDF-002428  
9-01-2020

29,550 acres at 8-30-2020 1830 hrs



Dolan Fire GIS  
08/31/2020 1800 HRS  
Acres from IR and field reports  
WGS84 Lat/Long Grid



- Drop Point
- ⊕ Dip Site
- ⊕ Helibase
- Helispot
- ⊕ Incident Command Post
- ⊕ Repeater
- ▲ Safety Zone
- ) ( Division Break
- ] [ Branch Break
- ▭ Uncontrolled Fire Edge
- ▭ Contained Line
- ▭ Completed Dozer Line
- ▭ Completed Hand Line
- ▭ Proposed Dozer Line
- ▭ Planned Fire Line
- Planned Secondary Line
- ▭ Temporary Flight Restriction
- ⊕ Check Point
- ▭ AirOpsRoutes
- ▭ PG&E Lines
- ▭ Retardant Avoidance Area

To Tusi Helibase →



<b>FeatureCategory</b>	<b>Label</b>	<b>LatWGS84_DDM</b>	<b>LongWGS84_DDM</b>
Camp		35° 56.017' N	121° 28.076' W
Dip Site	Hermitage Dip 2000'	36° 01.930' N	121° 32.171' W
Dip Site	Ranch Dip	36° 04.140' N	121° 23.248' W
Dip Site	House Dip	36° 01.470' N	121° 32.961' W
Dip Site	Bridge Dip	36° 10.700' N	121° 30.440' W
Dip Site	VOR Dip	36° 09.720' N	121° 35.130' W
Dip Site	Olympic Dip	36° 10.167' N	121° 31.003' W
Drop Point	DP-9	36° 13.743' N	121° 45.879' W
Drop Point	DP-11	36° 07.038' N	121° 37.804' W
Drop Point	DP-10	36° 09.582' N	121° 40.164' W
Drop Point	DP-12	36° 11.388' N	121° 42.434' W
Drop Point	DP-53	36° 01.236' N	121° 33.109' W
Drop Point	DP-54	36° 01.186' N	121° 32.393' W
Drop Point	DP-55	36° 01.557' N	121° 32.133' W
Drop Point	DP-56	35° 59.330' N	121° 29.644' W
Drop Point	DP-14	36° 12.567' N	121° 41.149' W
Drop Point	DP-16	36° 12.012' N	121° 39.519' W
Drop Point	DP-8	36° 10.170' N	121° 41.076' W
Drop Point	DP-15	36° 12.012' N	121° 40.081' W
Drop Point	DP-17	36° 11.433' N	121° 39.519' W
Drop Point	DP-13	36° 12.700' N	121° 41.781' W
Drop Point	DP-57	36° 00.588' N	121° 27.174' W
Drop Point	DP-16	36° 11.586' N	121° 39.615' W
Drop Point	DP-7	36° 11.395' N	121° 41.925' W
Helibase	Tusi Helibase	35° 59.687' N	121° 14.202' W
Helibase	Big Sur Helibase	36° 17.600' N	121° 51.801' W
Helispot	PV-Helispot	35° 55.957' N	121° 28.158' W
Helispot	H-3	36° 10.600' N	121° 37.870' W
Helispot	H-52	36° 00.710' N	121° 27.560' W
Helispot	H-2	36° 10.780' N	121° 40.500' W
Helispot	H-51	36° 03.270' N	121° 32.220' W
Helispot	H-4	36° 09.201' N	121° 33.711' W
Incident Command Post	ICP	36° 15.189' N	121° 47.129' W
Landmark	Willow	36° 12.461' N	121° 34.005' W
Landmark	Tan Oak	36° 11.523' N	121° 36.333' W
Landmark	Rodeo Flat Trail	36° 07.073' N	121° 31.308' W
Landmark	South Fork Trail	36° 12.659' N	121° 38.022' W
Landmark	Marble Peak Trail	36° 12.590' N	121° 32.169' W
Landmark	Memorial Campground	36° 07.201' N	121° 28.012' W
Landmark	Strawberry	36° 12.299' N	121° 36.141' W
Landmark	Arroyo Secco Trail	36° 06.942' N	121° 28.945' W
Landmark	Tony Trail	36° 13.634' N	121° 33.089' W
Landmark	Cold Springs	36° 12.715' N	121° 40.840' W
Landmark	Tassajara Camp	36° 13.480' N	121° 30.991' W
Other	Dome Check	36° 08.350' N	121° 31.360' W
Other	Lopez Check	36° 01.300' N	121° 34.110' W
Repeater	C-1 Anderson Peak	36° 10.834' N	121° 38.567' W
Repeater	L-1 Manuel Peak	36° 15.830' N	121° 45.911' W
Repeater	C-47 Cone Peak	36° 03.142' N	121° 29.802' W
Repeater	C-41 Junipero Serra Peak	36° 08.729' N	121° 25.162' W
Safety Zone		36° 11.314' N	121° 41.897' W
Safety Zone		36° 01.417' N	121° 32.271' W
Safety Zone		36° 02.037' N	121° 32.226' W
Safety Zone		36° 11.397' N	121° 41.960' W