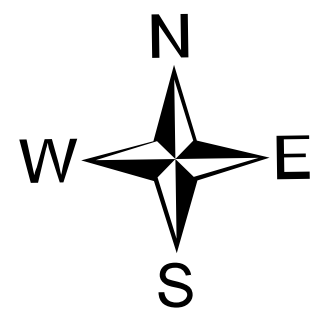


Air Ops
Dolan
LPF-002428
09/02/2020 Day

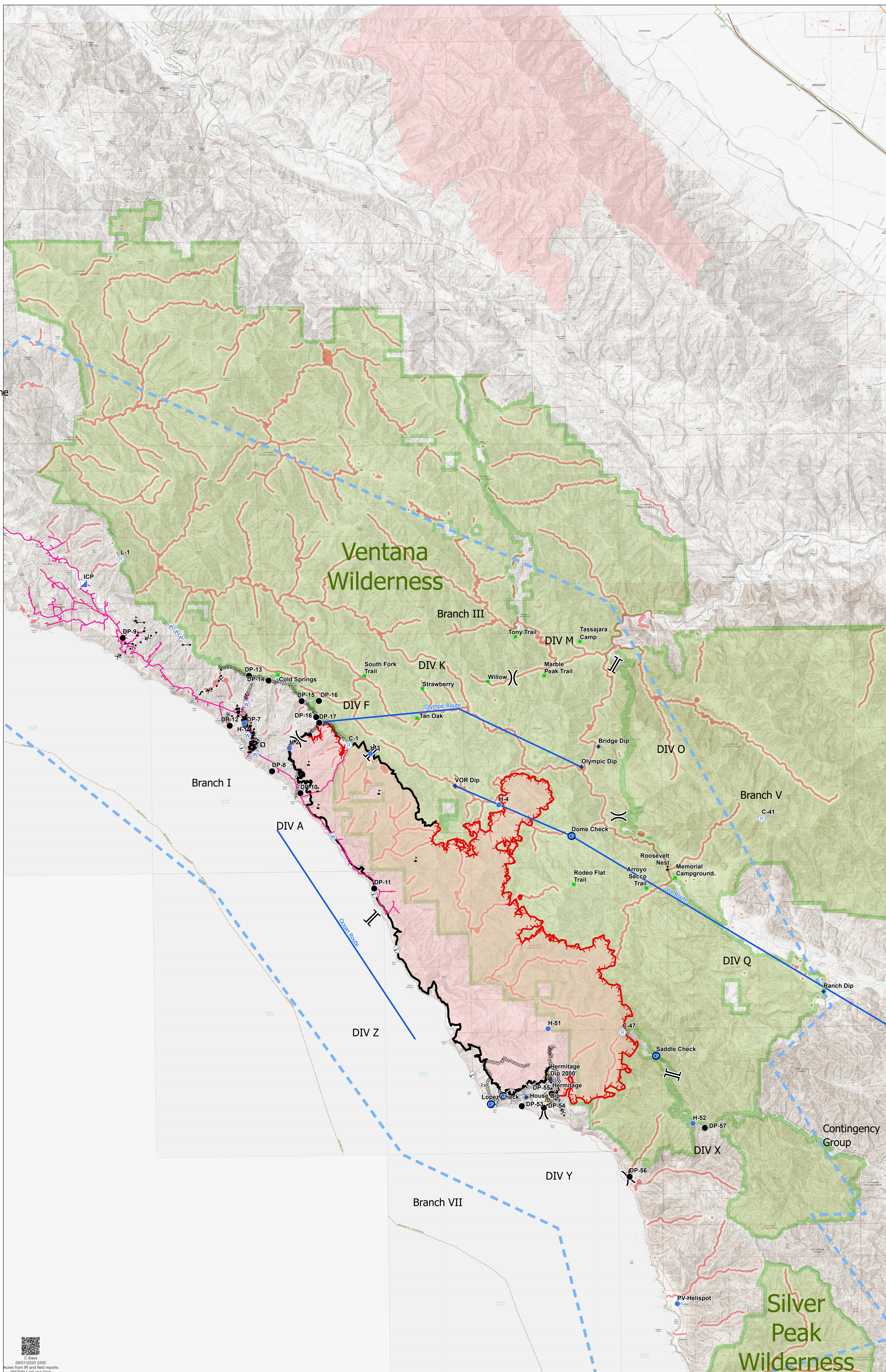
Approx. 31,005 ac at
09/01/2020



3.5

Miles

- AirOpsRoutes
- Distribution Lines
- PartingtonRidgeTransmissionLine
- Wilderness
- Hospital
- AviationObstacle_Pt_2019_Local HazardType
- Aerial cable
- Bridge
- Tower
- AviationObstacle_Ln_2019_Local HazardType
- Aerial cable
- Powerline
- Telephone wires
- Turbulence
- AviationActivity_Pt_2019_Local HazardType
- Airport
- Congested area
- Dip site
- Hangglide/Paraglide
- Helibase
- Helispot
- Parachute Jumping
- AviationActivity_Pl_2019_Local HazardType
- Aerobatic
- Congested area
- Hangglide/Paraglide
- Jettison
- MOA
- No Dipping
- No Fly Zone
- AviationObstacle_Pl_2019_Local HazardType
- Peak
- Powerline
- Turbulence
- Windmill
- AviationObstacle_Pt_2018_NIFC_R5 AGL_RngSrt
- <Null>
- 4 51-75 ft
- 5 76-100 ft
- 6 101-200 ft
- 7 201-500 ft
- 8 501-1000 ft
- 9 1001-2000 ft
- AviationObstacle_Ln_2018_NIFC_R5 ObName
- Bridge/Ovepass/Viaduct
- Military Training Route
- Telephone Line/Telegraph Line
- Power Transmission Line
- Power Transmission Line



09/01/2020 2200
Acres from IR and field reports
WCSBA Leaf/Long Grid