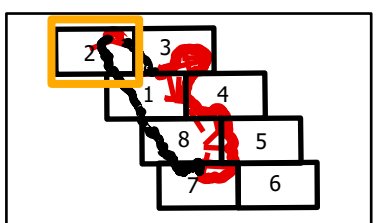


**IAP**  
 Branch I-Div A North/F  
 Page 2 of 8  
**Dolan Fire**  
**CA-LPF-002428**  
**9/4/2020**  
*31,901 acres at 9/2/2020 1930 hrs*

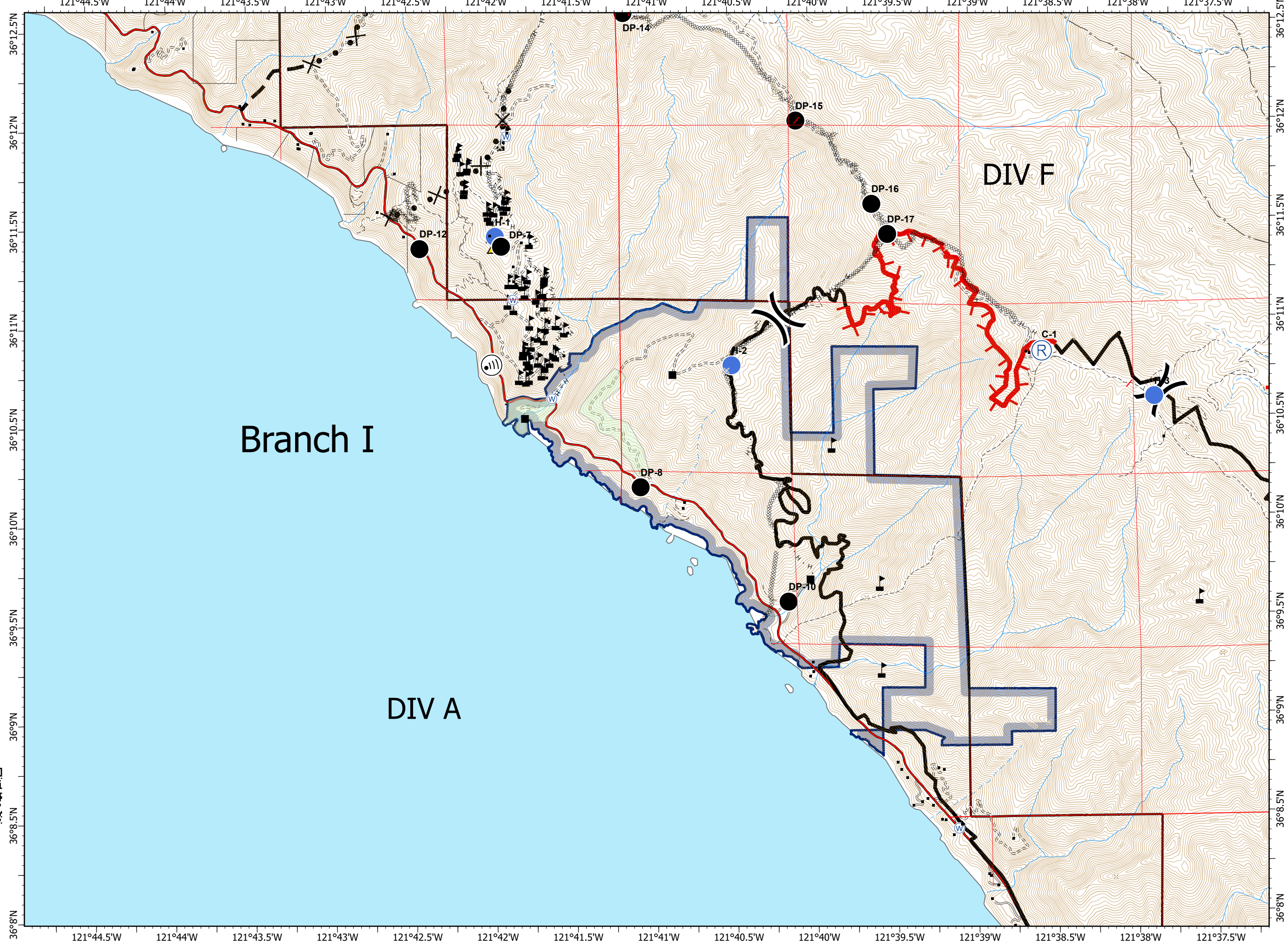
- Drop Point
- Helispot
- ⊙ Internet Access
- ⊙ Repeater
- ▲ Safety Zone
- ⊙ Water Source
- ⚡ Value at Risk
- ⌘ Division Break
- ▬ Uncontrolled Fire Edge
- ▬ Contained Line
- ⊗ Completed Dozer Line
- H Completed Hand Line
- × Proposed Dozer Line
- ▬ Planned Fire Line
- Sensitive Natural Resources
- Sensitive Historical Resources
- State Park



0 1/4 1/2 Miles



PNW2 GISS  
 9/3/2020 2207  
 Acres from IR and field reports  
 North American 1983 Datum.  
 Lat/Long Grid



Branch I

DIV F

DIV A