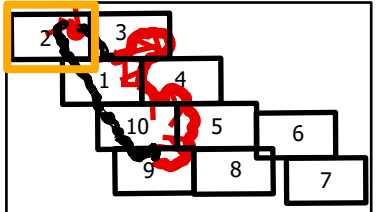


IAP
 Branch I-Div A North/F
 Page 2 of 10
Dolan Fire
CA-LPF-002428
9/6/2020
34,175 acres at 9/5/2020 2240 hrs

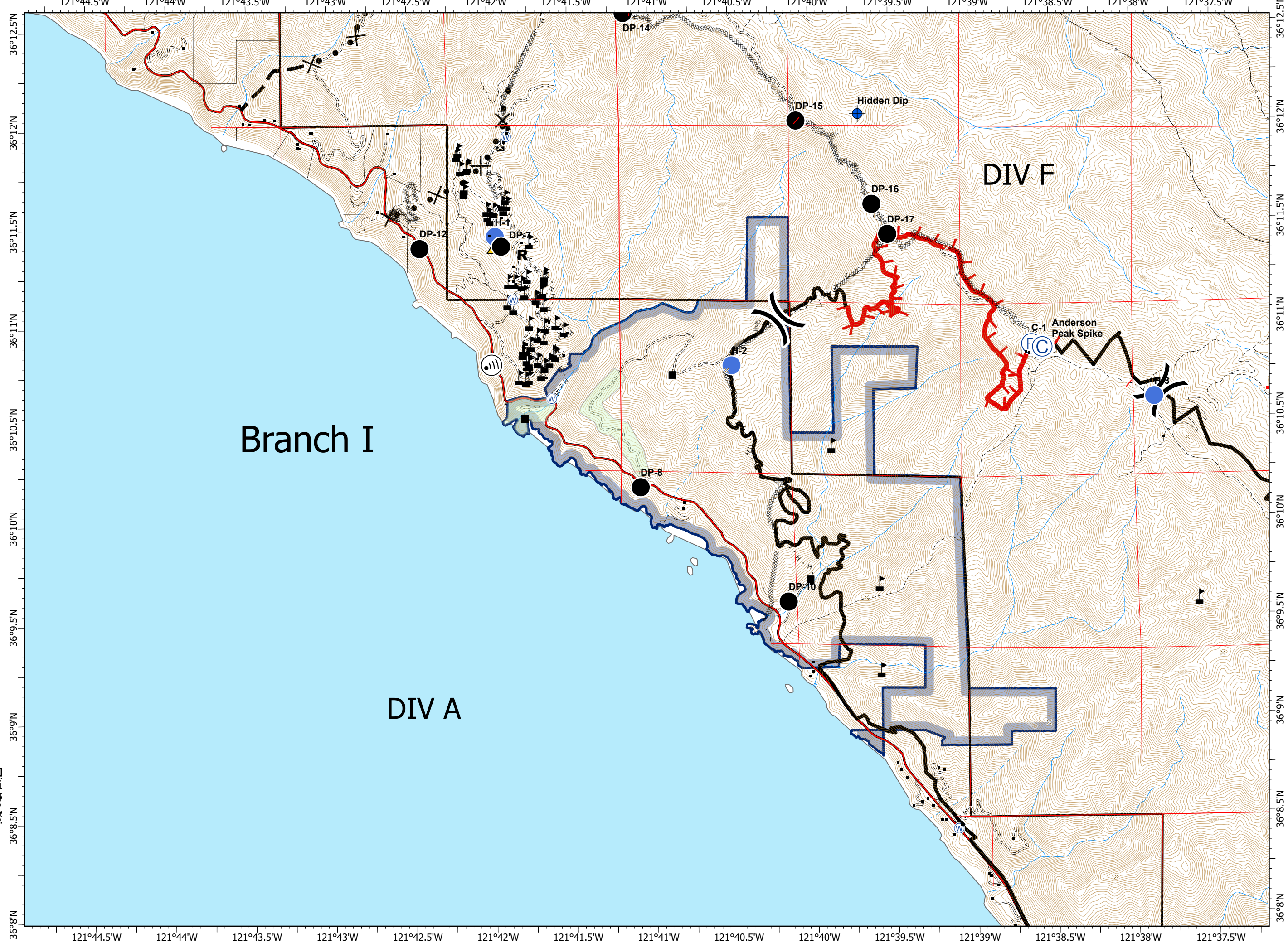
- Drop Point
- ⊙ Camp
- ⊕ Dip Site
- Helispot
- Ⓜ Internet Access
- Ⓡ Repeater
- R** Resource Location
- ▲ Safety Zone
- Ⓜ Water Source
- ⚠ Value at Risk
-) Division Break
- ┃ Uncontrolled Fire Edge
- Contained Line
- ⊗ Completed Dozer Line
- ⋄ Completed Hand Line
- × Proposed Dozer Line
- Planned Fire Line
- Sensitive Natural Resources
- Sensitive Historical Resources
- State Park



0 1/4 1/2 Miles



PNW2 GISS
 9/6/2020 2148
 Acres from IR and field reports
 North American 1983 Datum.
 LatLong Grid



121°44.5'W 121°44'W 121°43.5'W 121°43'W 121°42.5'W 121°42'W 121°41.5'W 121°41'W 121°40.5'W 121°40'W 121°39.5'W 121°39'W 121°38.5'W 121°38'W 121°37.5'W