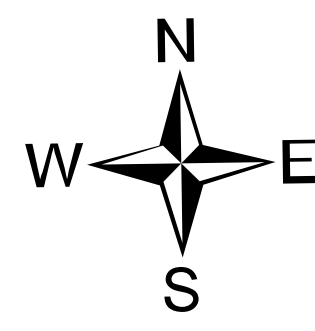
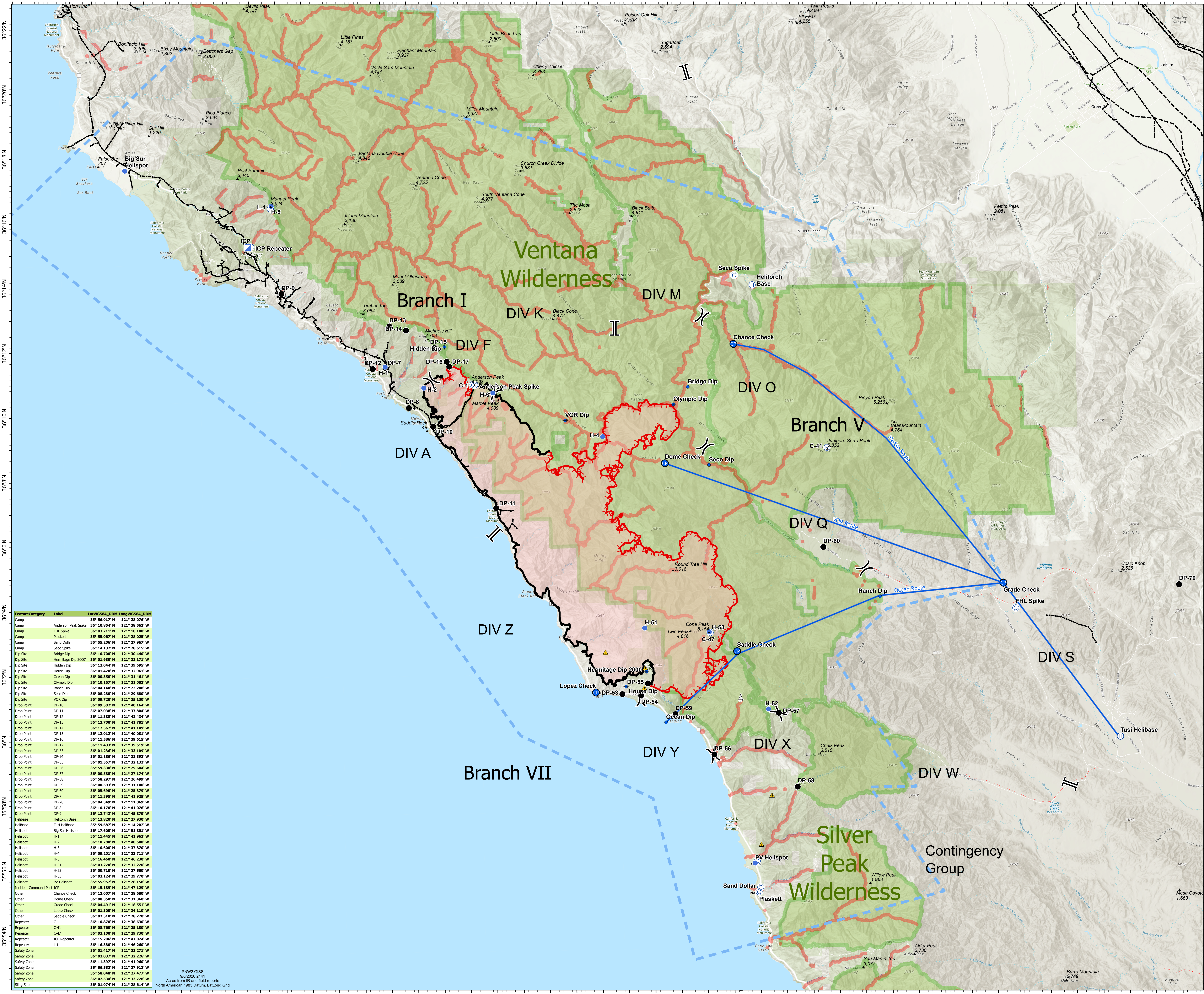


Air Ops
Dolan Fire
CA-LPF-002428
9/7/2020

34,175 acres at 9/5/2020 2240 hrs



0 1/2 1 2 US Nautical Miles



- Air Ops Routes
- Retardant Avoidance
- Powerline
- Telephone wires
- Peak
- Helispot
- ⊙ Camp
- ♦ Dip Site
- Drop Point
- ⊙ Helibase
- Incident Command Post
- ⊙ Repeater
- ▲ Safety Zone
- ▲ Sling Site
- ⊙ Checkpoint
-) Division Break
- || Branch Break
- Uncontrolled Fire Edge
- Contained Line
- Temporary Flight Restriction
Frequency 127.025
≤ 10,000' MSL

Feature	Category	Label	LatWGS84_DDM	LongWGS84_DDM
Camp		Anderson Peak Spike	35° 56.017' N	121° 28.076' W
Camp		FHL Spike	36° 03.711' N	121° 18.100' W
Camp		Plaskett	35° 55.067' N	121° 28.025' W
Camp		Sand Dollar	35° 55.200' N	121° 27.967' W
Camp		Seco Spike	36° 14.132' N	121° 28.615' W
Dip Site		Bridge Dip	36° 10.700' N	121° 30.440' W
Dip Site		Hermitage Dip 2000'	36° 01.930' N	121° 32.171' W
Dip Site		Hidden Dip	36° 12.044' N	121° 39.695' W
Dip Site		House Dip	36° 01.470' N	121° 32.961' W
Dip Site		Ocean Dip	36° 00.350' N	121° 31.461' W
Dip Site		Olympic Dip	36° 10.167' N	121° 31.003' W
Dip Site		Ranch Dip	36° 04.140' N	121° 23.248' W
Dip Site		Seco Dip	36° 08.280' N	121° 29.680' W
Dip Site		VOR Dip	36° 09.720' N	121° 35.130' W
Drop Point		DP-10	36° 09.582' N	121° 40.164' W
Drop Point		DP-11	36° 07.038' N	121° 37.804' W
Drop Point		DP-12	36° 11.288' N	121° 42.274' W
Drop Point		DP-13	36° 12.700' N	121° 41.781' W
Drop Point		DP-14	36° 12.567' N	121° 41.149' W
Drop Point		DP-15	36° 12.012' N	121° 40.081' W
Drop Point		DP-16	36° 11.560' N	121° 39.615' W
Drop Point		DP-17	36° 11.433' N	121° 39.519' W
Drop Point		DP-53	36° 01.236' N	121° 33.109' W
Drop Point		DP-54	36° 01.186' N	121° 32.393' W
Drop Point		DP-55	36° 01.557' N	121° 32.133' W
Drop Point		DP-56	35° 59.330' N	121° 29.644' W
Drop Point		DP-57	36° 00.588' N	121° 27.174' W
Drop Point		DP-58	35° 58.297' N	121° 26.499' W
Drop Point		DP-59	36° 00.903' N	121° 31.100' W
Drop Point		DP-60	36° 05.690' N	121° 25.379' W
Drop Point		DP-7	36° 11.395' N	121° 41.925' W
Drop Point		DP-70	36° 04.349' N	121° 11.869' W
Drop Point		DP-8	36° 10.170' N	121° 41.076' W
Drop Point		DP-9	36° 13.743' N	121° 45.879' W
Helibase		Helitorch Base	36° 13.820' N	121° 27.930' W
Helibase		Tusi Helibase	35° 59.687' N	121° 14.202' W
Helispot		Big Sur Helispot	36° 17.600' N	121° 51.801' W
Helispot		H-1	36° 11.445' N	121° 41.963' W
Helispot		H-2	36° 10.780' N	121° 40.500' W
Helispot		H-3	36° 10.600' N	121° 37.870' W
Helispot		H-4	36° 09.201' N	121° 33.711' W
Helispot		H-5	36° 16.460' N	121° 46.230' W
Helispot		H-51	36° 03.270' N	121° 32.220' W
Helispot		H-52	36° 00.710' N	121° 27.560' W
Helispot		H-53	36° 03.124' N	121° 29.770' W
Helispot		PV-Helispot	35° 55.957' N	121° 28.158' W
Incident Command Post		ICP	36° 15.189' N	121° 47.129' W
Other		Chance Check	36° 12.007' N	121° 28.680' W
Other		Dome Check	36° 08.200' N	121° 31.260' W
Other		Goats Check	36° 04.491' N	121° 18.551' W
Other		Lopez Check	36° 01.300' N	121° 34.110' W
Other		Saddle Check	36° 02.510' N	121° 28.720' W
Repeater		C-1	36° 10.870' N	121° 38.630' W
Repeater		C-41	36° 08.760' N	121° 25.180' W
Repeater		C-47	36° 03.100' N	121° 29.730' W
Repeater		ICP Repeater	36° 15.206' N	121° 47.024' W
Repeater		L-1	36° 16.280' N	121° 46.260' W
Safety Zone			36° 01.417' N	121° 32.271' W
Safety Zone			36° 02.037' N	121° 32.226' W
Safety Zone			36° 11.397' N	121° 41.960' W
Safety Zone			35° 56.532' N	121° 27.913' W
Safety Zone			35° 18.648' N	121° 22.477' W
Safety Zone			36° 02.534' N	121° 33.728' W
Sling Site			36° 01.074' N	121° 28.614' W

PNW2 GISS
9/6/2020 2141
Acres from IR and field reports
North American 1983 Datum, Lat,Long Grid

