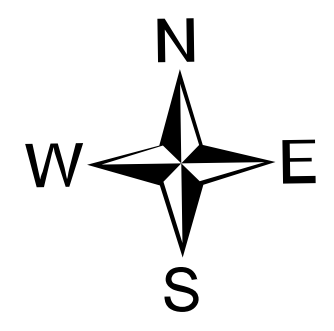
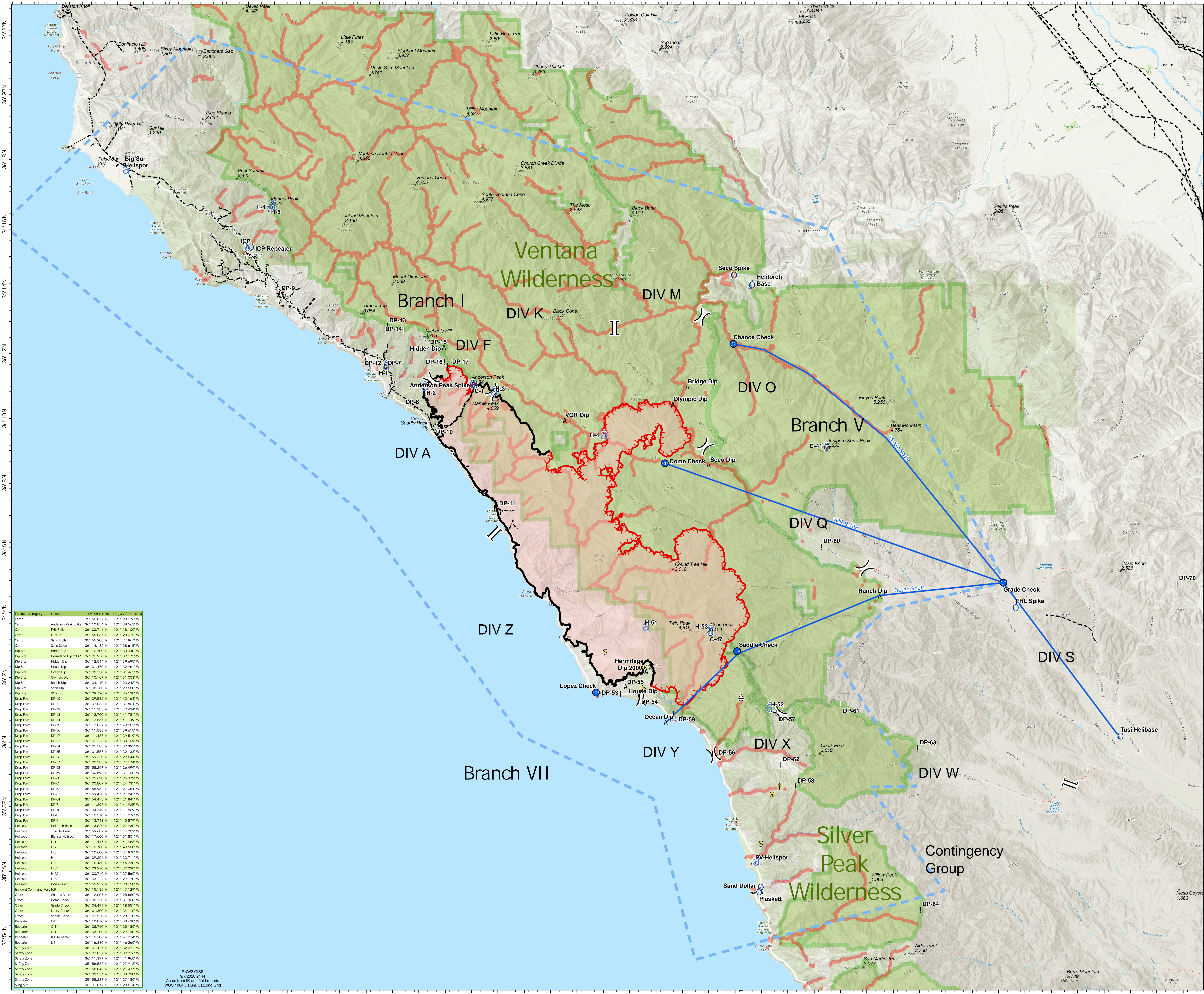


Air Ops
Dolan Fire
CA-LPF-002428
9/8/2020

36,260 acres at 9/6/2020 2345 hrs



0 1/2 1 2 US Nautical Miles



Feature/Category	Label	Lat/Long (WGS84, DDM)	Long/WGS84, DDM
Camp	Anderson Peak Spike	36° 10.854' N	121° 38.563' W
Camp	FHL Spike	36° 03.711' N	121° 18.100' W
Camp	Plaskett	35° 55.067' N	121° 28.025' W
Camp	Sand Dollar	35° 55.206' N	121° 27.967' W
Camp	Seco Spike	36° 14.132' N	121° 28.615' W
Dip Site	Bridge Dip	36° 10.700' N	121° 30.440' W
Dip Site	Hermitage Dip 2000	36° 01.930' N	121° 32.171' W
Dip Site	Hidden Dip	36° 12.044' N	121° 39.695' W
Dip Site	House Dip	36° 01.470' N	121° 32.961' W
Dip Site	Ocean Dip	36° 03.350' N	121° 31.461' W
Dip Site	Olympic Dip	36° 10.167' N	121° 31.003' W
Dip Site	Ranch Dip	36° 04.140' N	121° 23.248' W
Dip Site	Seco Dip	36° 08.200' N	121° 29.680' W
Dip Site	VOR Dip	36° 09.200' N	121° 35.190' W
Drop Point	DP-10	36° 09.582' N	121° 40.164' W
Drop Point	DP-11	36° 07.038' N	121° 37.804' W
Drop Point	DP-12	36° 11.888' N	121° 42.434' W
Drop Point	DP-13	36° 12.700' N	121° 41.781' W
Drop Point	DP-14	36° 12.567' N	121° 41.149' W
Drop Point	DP-15	36° 12.012' N	121° 40.081' W
Drop Point	DP-16	36° 11.586' N	121° 39.615' W
Drop Point	DP-17	36° 11.433' N	121° 39.519' W
Drop Point	DP-53	36° 01.236' N	121° 33.109' W
Drop Point	DP-54	36° 01.186' N	121° 32.193' W
Drop Point	DP-55	36° 01.557' N	121° 32.133' W
Drop Point	DP-56	35° 59.330' N	121° 29.644' W
Drop Point	DP-57	36° 00.588' N	121° 27.174' W
Drop Point	DP-58	35° 58.297' N	121° 26.499' W
Drop Point	DP-59	36° 00.593' N	121° 31.100' W
Drop Point	DP-60	36° 00.600' N	121° 25.379' W
Drop Point	DP-61	36° 00.807' N	121° 24.731' W
Drop Point	DP-62	35° 58.962' N	121° 27.054' W
Drop Point	DP-63	35° 59.410' N	121° 21.841' W
Drop Point	DP-64	35° 54.818' N	121° 21.841' W
Drop Point	DP-7	36° 11.395' N	121° 41.925' W
Drop Point	DP-70	36° 04.349' N	121° 11.869' W
Drop Point	DP-9	36° 10.700' N	121° 41.016' W
Drop Point	DP-9	36° 13.743' N	121° 45.879' W
Helibase	Helitorch Base	36° 13.820' N	121° 27.930' W
Helibase	Tusi Helibase	35° 59.687' N	121° 14.202' W
Helispot	Big Sur Helispot	36° 17.600' N	121° 51.801' W
Helispot	H-1	36° 11.445' N	121° 41.963' W
Helispot	H-2	36° 10.780' N	121° 40.500' W
Helispot	H-3	36° 10.600' N	121° 37.870' W
Helispot	H-4	36° 09.201' N	121° 33.711' W
Helispot	H-5	36° 16.460' N	121° 46.230' W
Helispot	H-51	36° 03.270' N	121° 32.220' W
Helispot	H-52	36° 00.710' N	121° 27.560' W
Helispot	H-53	36° 03.124' N	121° 29.770' W
Helispot	PV Helispot	35° 55.957' N	121° 28.158' W
Incident Command Post	ICP	36° 15.189' N	121° 47.125' W
Other	Chance Check	36° 12.007' N	121° 28.680' W
Other	Dome Check	36° 08.350' N	121° 31.360' W
Other	Grade Check	36° 04.891' N	121° 18.551' W
Other	Lopez Check	36° 01.300' N	121° 34.110' W
Other	Saddle Check	36° 02.510' N	121° 28.720' W
Repeater	C-1	36° 10.870' N	121° 38.530' W
Repeater	C-47	36° 08.760' N	121° 25.180' W
Repeater	C-47	36° 03.100' N	121° 29.730' W
Repeater	ICP Repeater	36° 15.200' N	121° 47.024' W
Repeater	L-1	36° 16.380' N	121° 46.260' W
Safety Zone	L-1	36° 01.417' N	121° 32.271' W
Safety Zone		36° 02.037' N	121° 32.226' W
Safety Zone		36° 11.397' N	121° 41.960' W
Safety Zone		35° 56.532' N	121° 27.913' W
Safety Zone		35° 58.048' N	121° 27.477' W
Safety Zone		36° 02.534' N	121° 33.726' W
Safety Zone		35° 58.287' N	121° 27.180' W
Sling Site		36° 01.074' N	121° 28.614' W

PNW2 GISS
9/7/2020 2144
Acres from IR and field reports
WGS 1984 Datum, Lat,Long Goid

