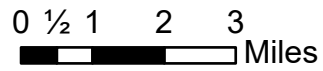


IAP Index

Dolan Fire
CA-LPF-002428
9/9/2020

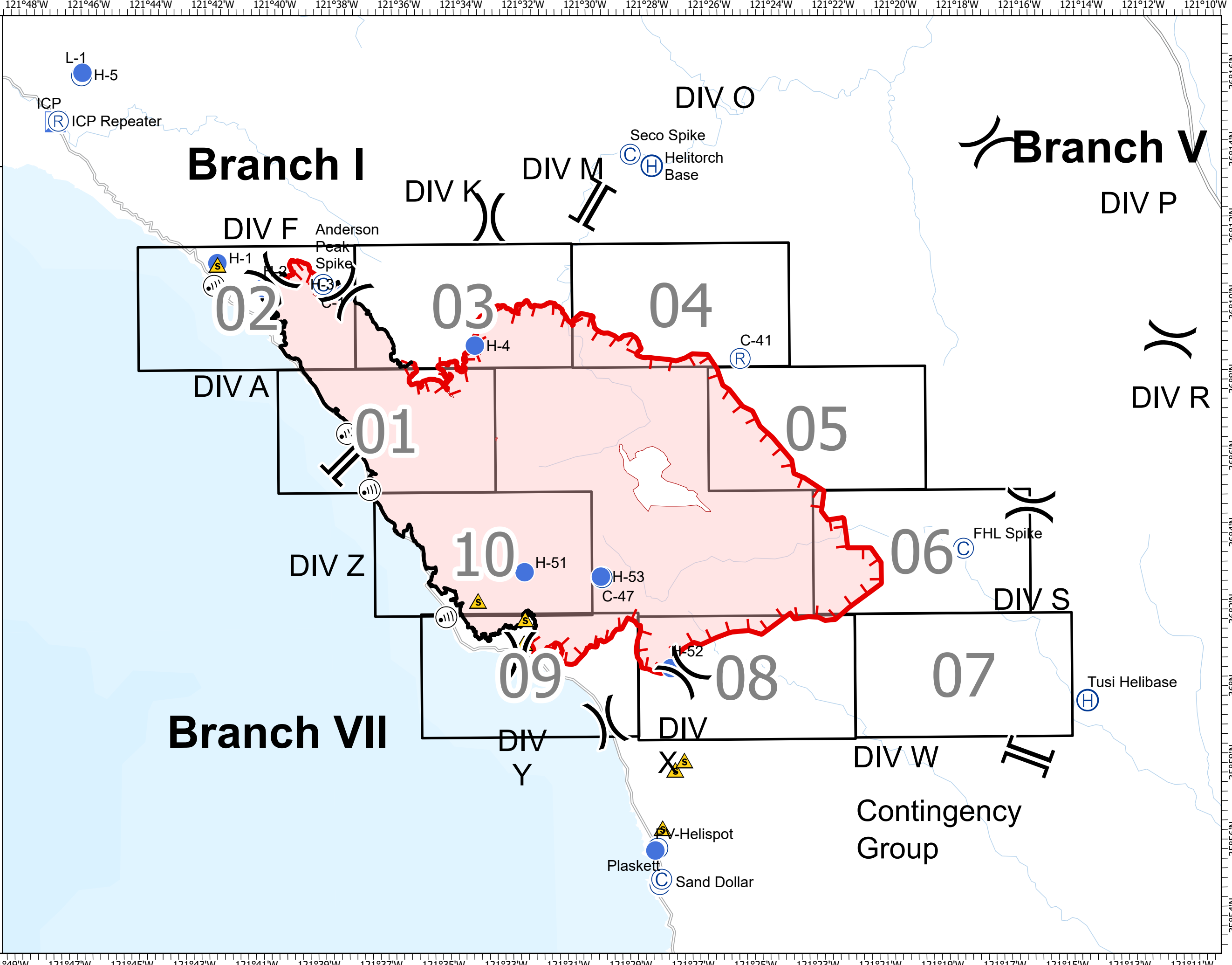
73,089 acres at 9/8/2020 0200 hrs



- IAP Map Index
- Camp
- Helibase
- Helispot
- Incident Command Post
- Internet Access
- Repeater
- Safety Zone
- Division Break
- Branch Break
- Uncontrolled Fire Edge
- Contained Line
- Wildfire Daily Fire Perimeter

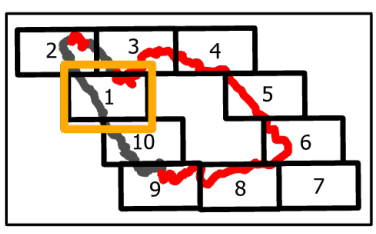


PNW2 GISS
9/8/2020 2259
Acres from IR and field reports
North American 1983 Datum.
LatLong Grid



IAP
 Branch I-Div A South
 Page 1 of 10
Dolan Fire
CA-LPF-002428
9/9/2020
73,089 acres at 9/8/2020 0200 hrs

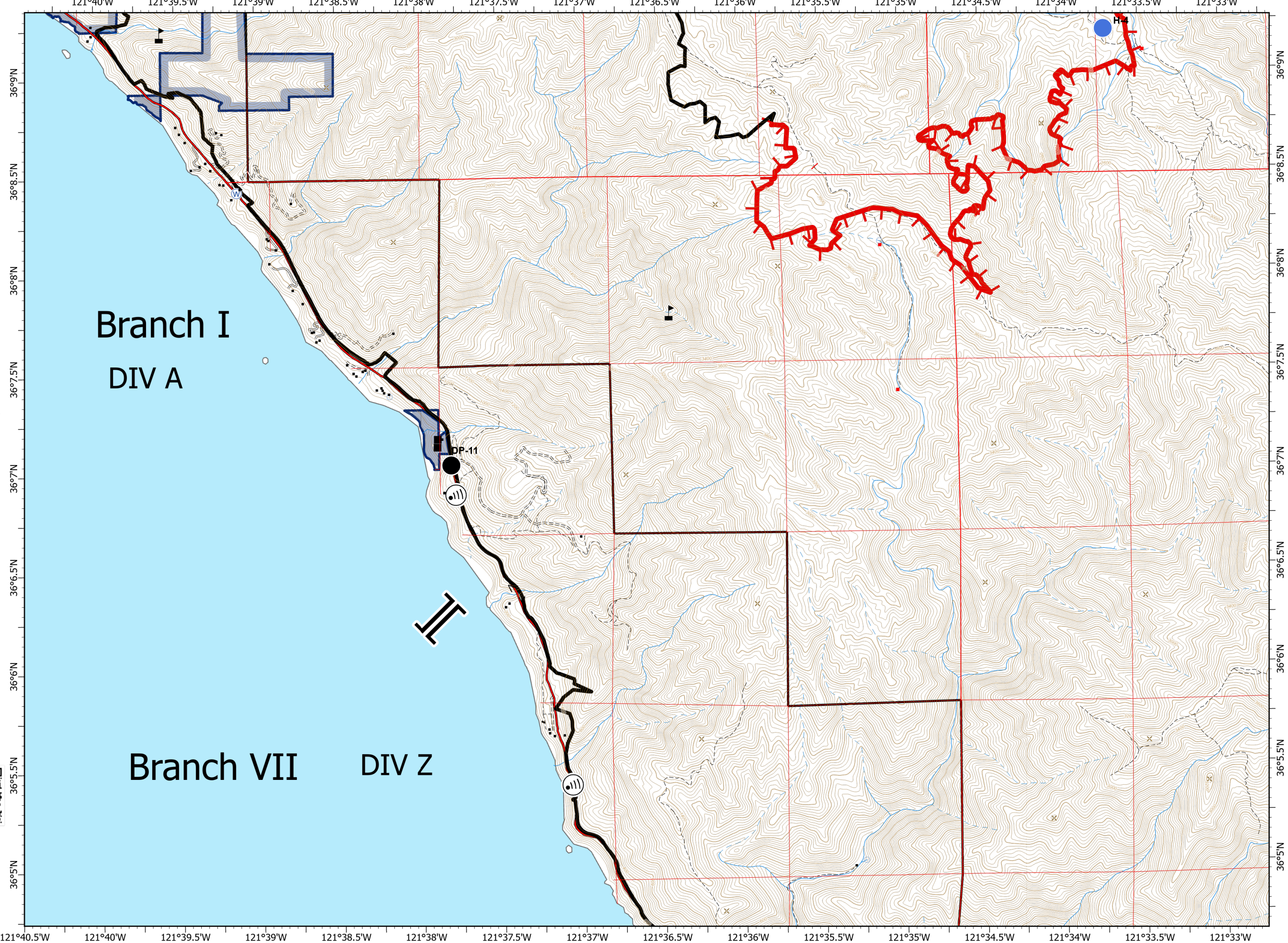
- Drop Point
- Helispot
- Ⓜ Internet Access
- Ⓜ Water Source
- ▲ Value at Risk
- || Branch Break
- ┌ Uncontrolled Fire Edge
- Contained Line
- Sensitive Natural Resources
- Sensitive Historical Resources
- State Park



0 1/4 1/2 Miles

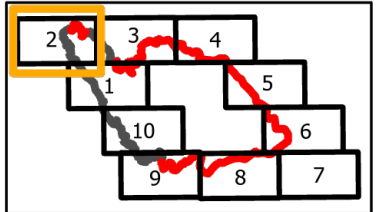


PNW2 GISS
 9/8/2020 2308
 Acres from IR and field reports
 North American 1983 Datum.
 LatLong Grid



IAP
 Branch I-Div A North/F
 Page 2 of 10
Dolan Fire
CA-LPF-002428
9/9/2020
73,089 acres at 9/8/2020 0200 hrs

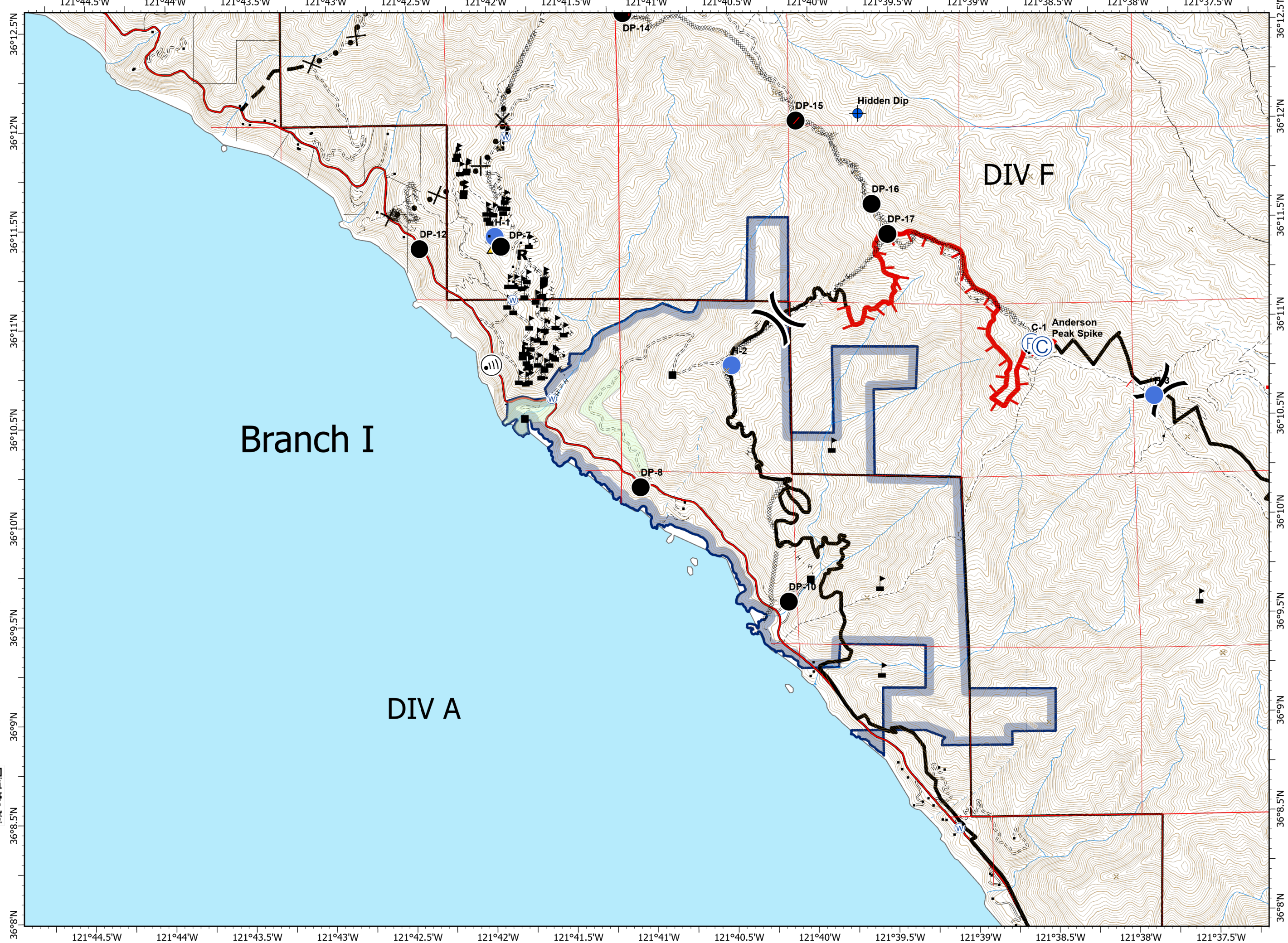
- Drop Point
- ⊙ Camp
- ⊕ Dip Site
- Helispot
- Ⓜ Internet Access
- Ⓡ Repeater
- R** Resource Location
- ▲ Safety Zone
- Ⓜ Water Source
- ⚠ Value at Risk
-) Division Break
- ┃ Uncontrolled Fire Edge
- Contained Line
- ⊗ Completed Dozer Line
- H Completed Hand Line
- × Proposed Dozer Line
- Planned Fire Line
- Sensitive Natural Resources
- Sensitive Historical Resources
- State Park



0 1/4 1/2 Miles



PNW2 GISS
 9/8/2020 2308
 Acres from IR and field reports
 North American 1983 Datum.
 LatLong Grid



Branch I

DIV A

DIV F

C-1 Anderson Peak Spike

Hidden Dip

DP-14

DP-15

DP-16

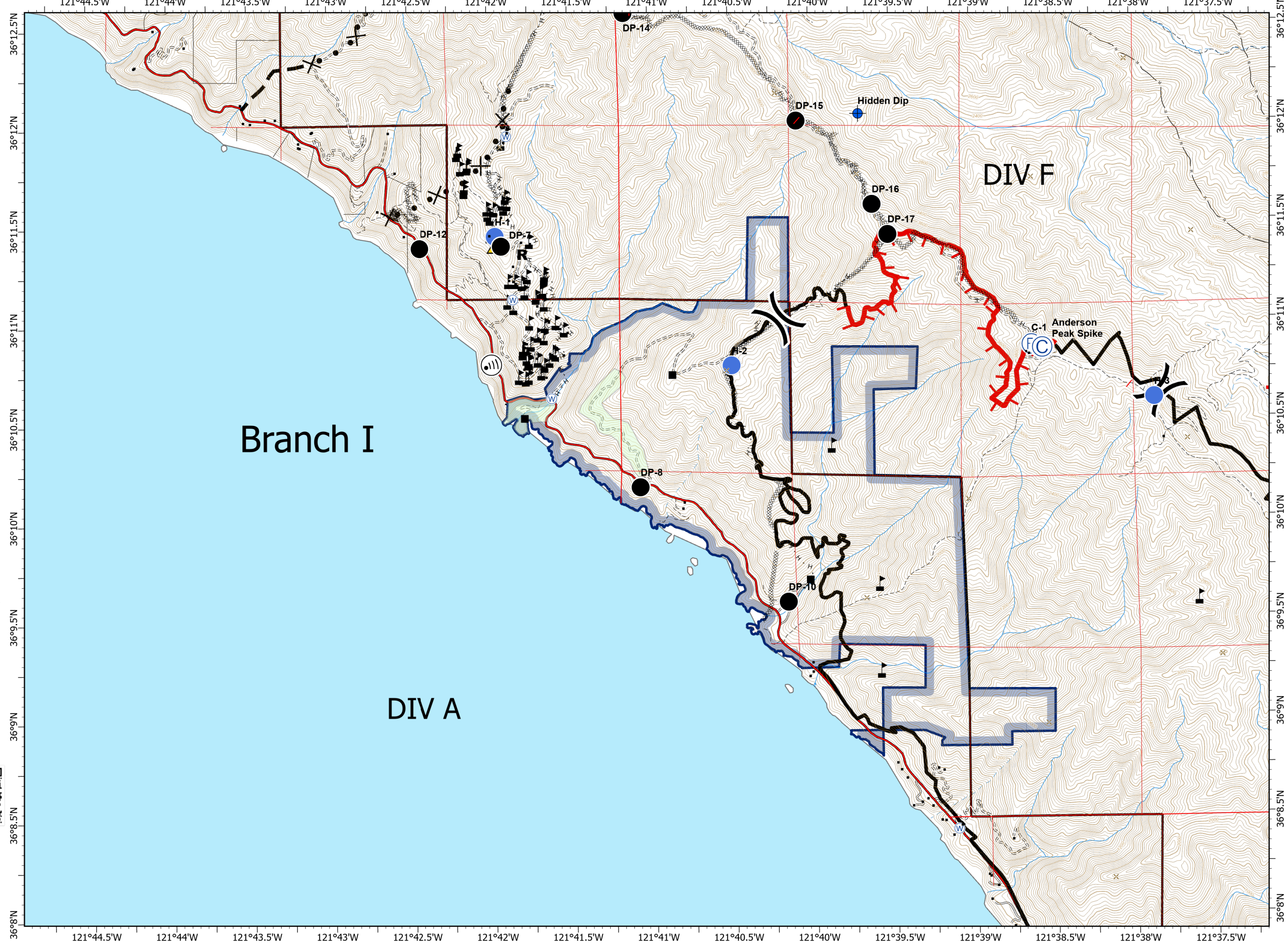
DP-17

DP-12

DP-7

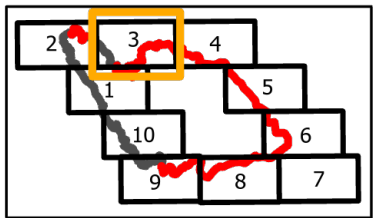
DP-8

DP-10



IAP
 Branch I/V-Div K/M/
 Page 3 of 10
Dolan Fire
CA-LPF-002428
9/9/2020
 73,089 acres at
 9/8/2020 0200 hrs

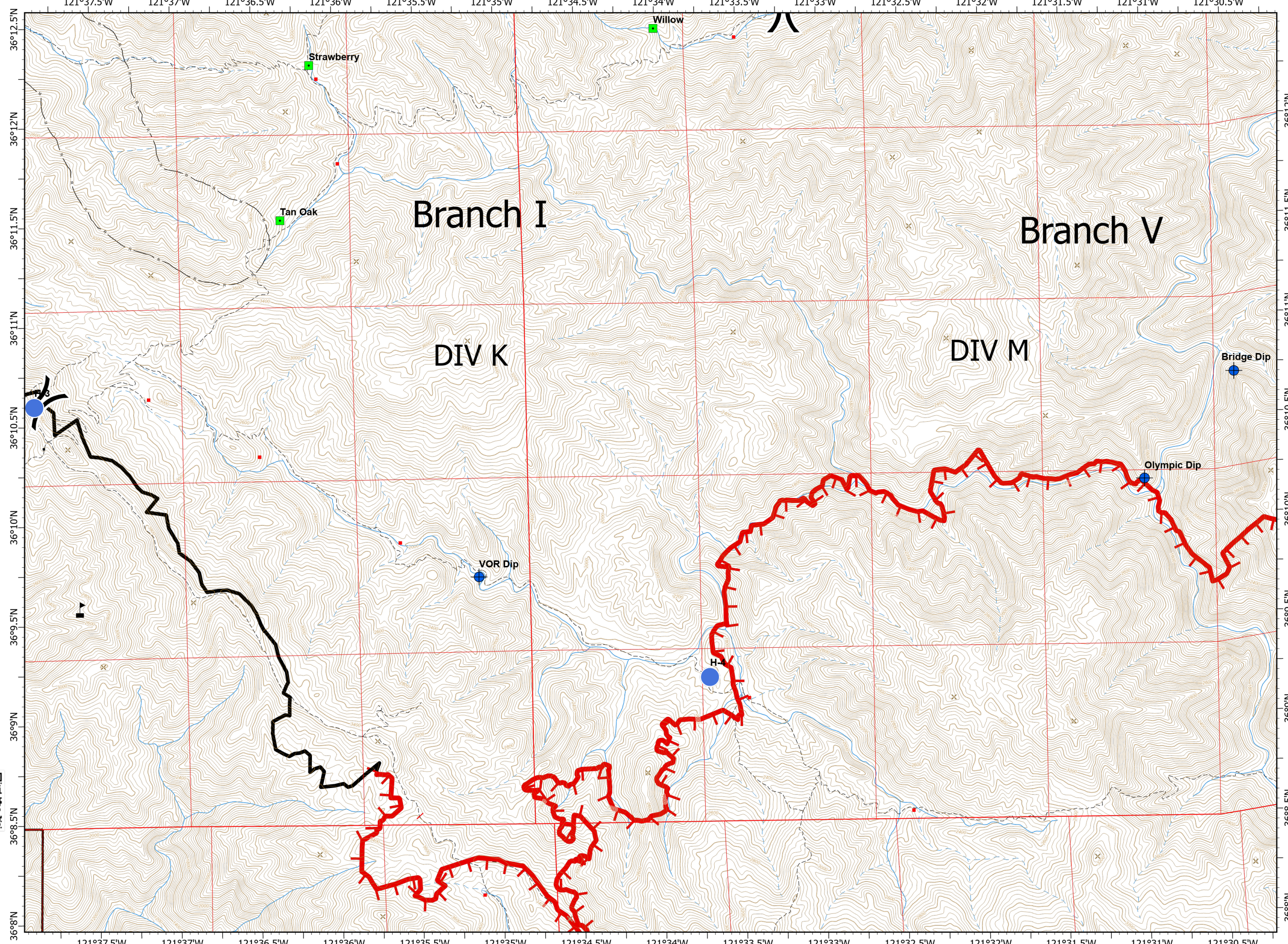
-  Dip Site
-  Helispot
-  Landmark
-  Value at Risk
-  Division Break
-  Uncontrolled Fire Edge
-  Contained Line







0 1/4 1/2 Miles

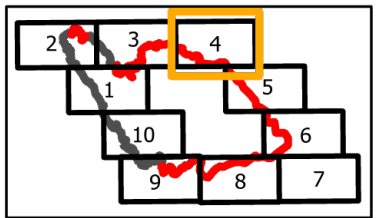


PNW2 GISS
 9/8/2020 2308
 Acres from IR and field reports
 North American 1983 Datum.
 Lat/Long Grid



IAP
 Branch V-Div O/P
 Page 4 of 10
Dolan Fire
CA-LPF-002428
9/9/2020
 73,089 acres at
 9/8/2020 0200 hrs

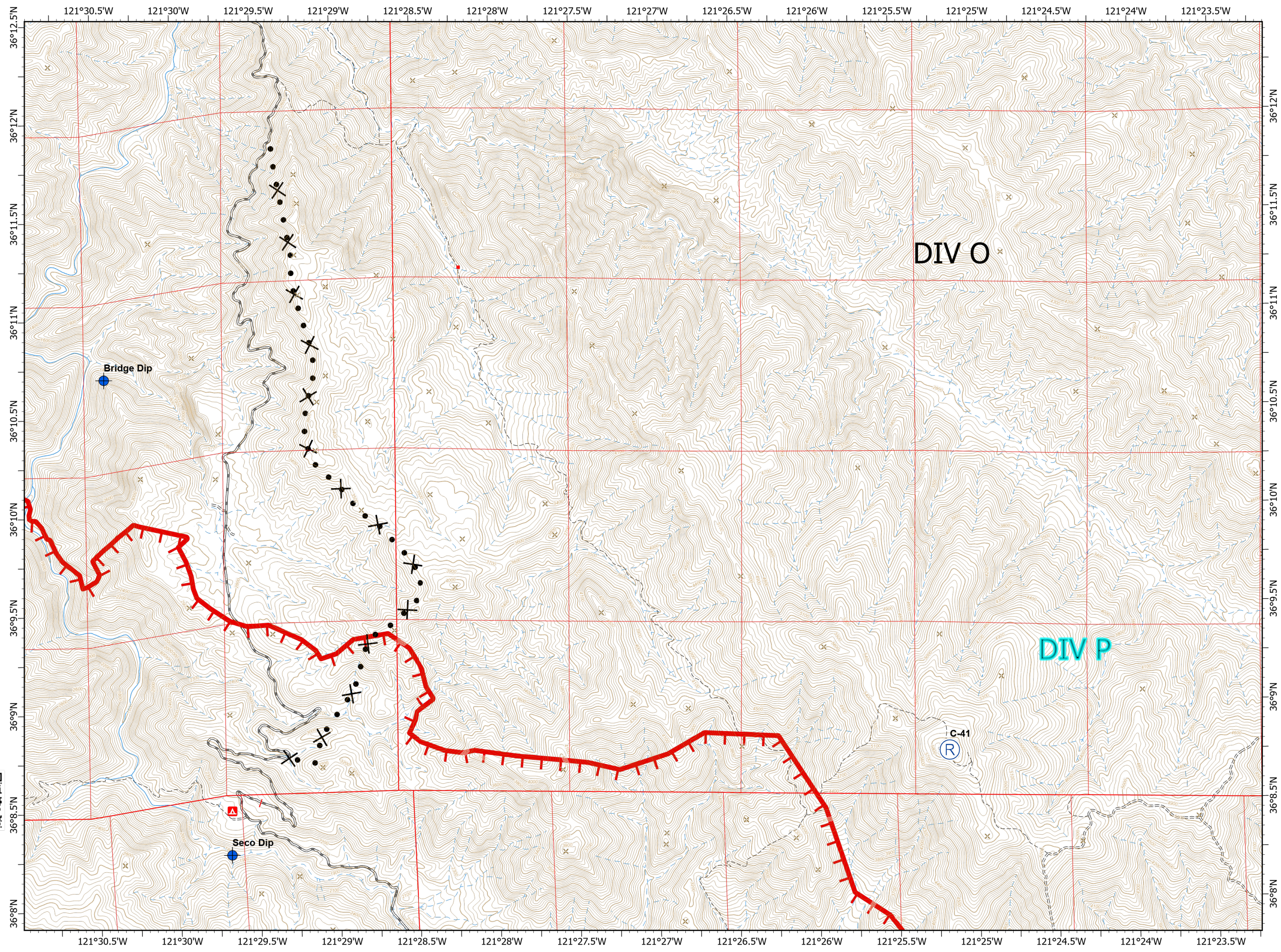
-  Dip Site
-  Repeater
-  Uncontrolled Fire Edge
-  Proposed Dozer Line



0 1/4 1/2 Miles

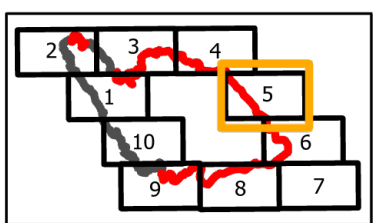


PNW2 GISS
 9/8/2020 2309
 Acres from IR and field reports
 North American 1983 Datum.
 LatLong Grid



IAP
 Branch V-Div R
 Page 5 of 10
Dolan Fire
CA-LPF-002428
9/9/2020
*73,089 acres at
 9/8/2020 0200 hrs*

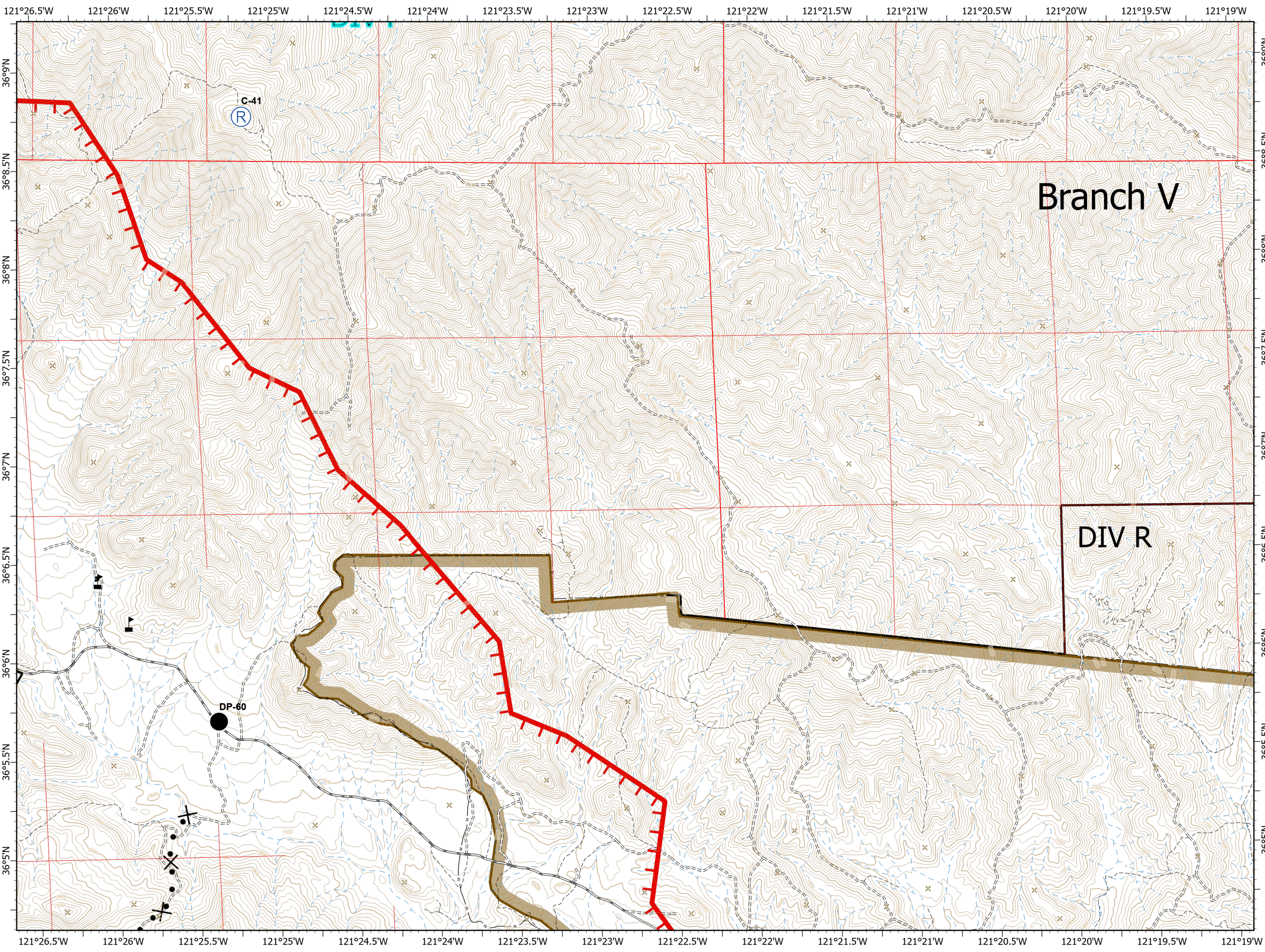
- Drop Point
- Ⓡ Repeater
- ▲ Value at Risk
- ▬ Uncontrolled Fire Edge
- × Proposed Dozer Line
- ▭ Fort Hunter Liggett



0 1/4 1/2 Miles



PNW2 GISS
 9/8/2020 2309
 Acres from IR and field reports
 North American 1983 Datum
 Lat/Long Grid



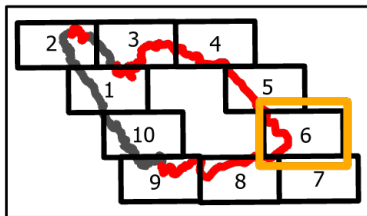
IAP

Branch V-Div S North
Page 6 of 10

Dolan Fire
CA-LPF-002428
9/9/2020

73,089 acres at
9/8/2020 0200 hrs

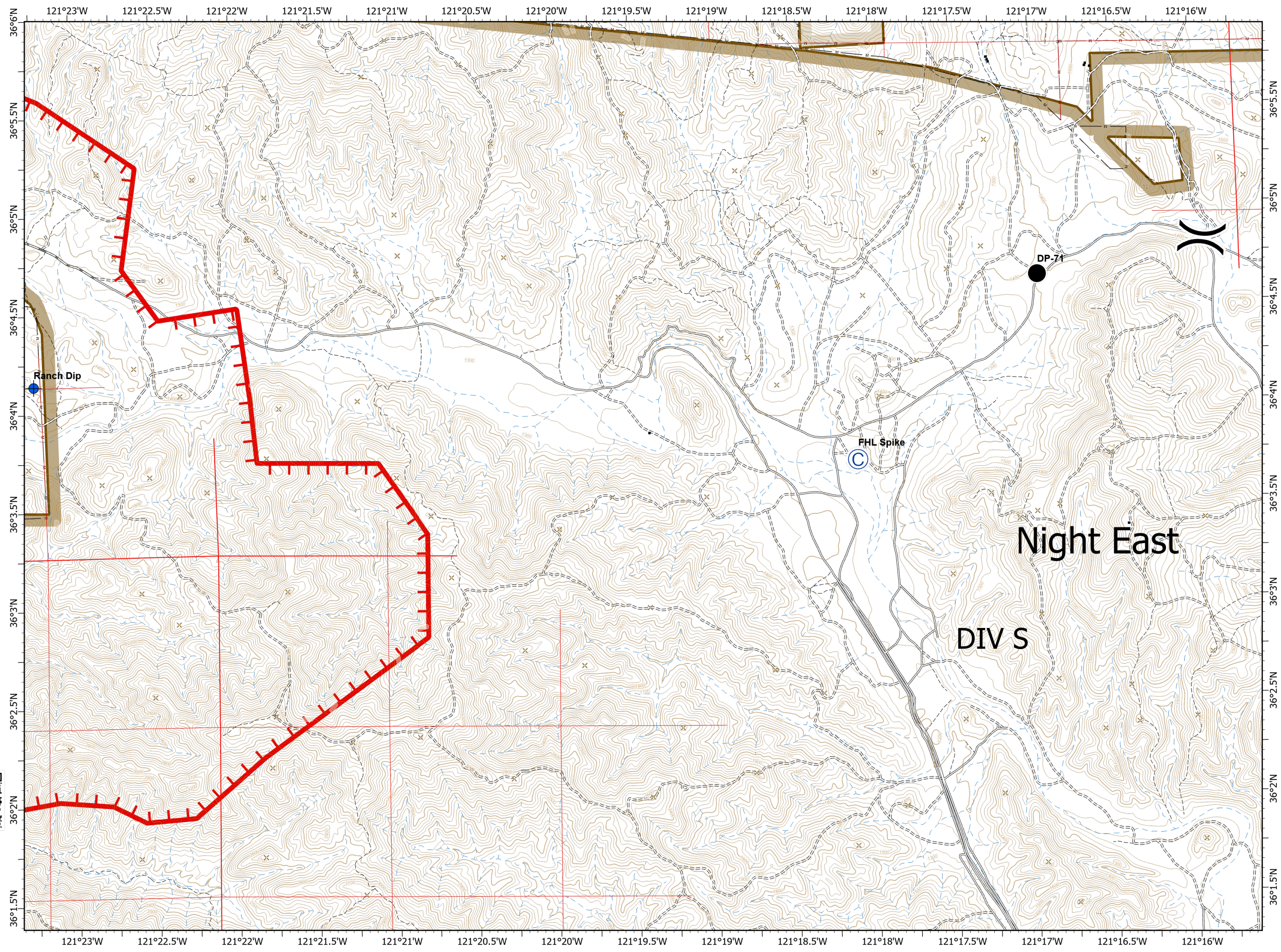
- Drop Point
- ⊙ Camp
- ⊕ Dip Site
-) Division Break
- ▬ Uncontrolled Fire Edge
- ▭ Fort Hunter Liggett



0 1/4 1/2 Miles

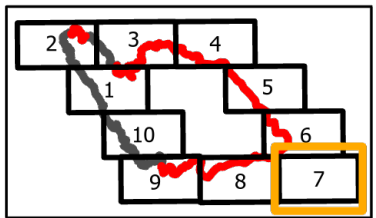


PNW2 GISS
9/8/2020 2310
Acres from IR and field reports
North American 1983 Datum.
Lat/Long Grid



IAP
 Branch V-Div S South/W
 Page 7 of 10
Dolan Fire
CA-LPF-002428
9/9/2020
 73,089 acres at
 9/8/2020 0200 hrs

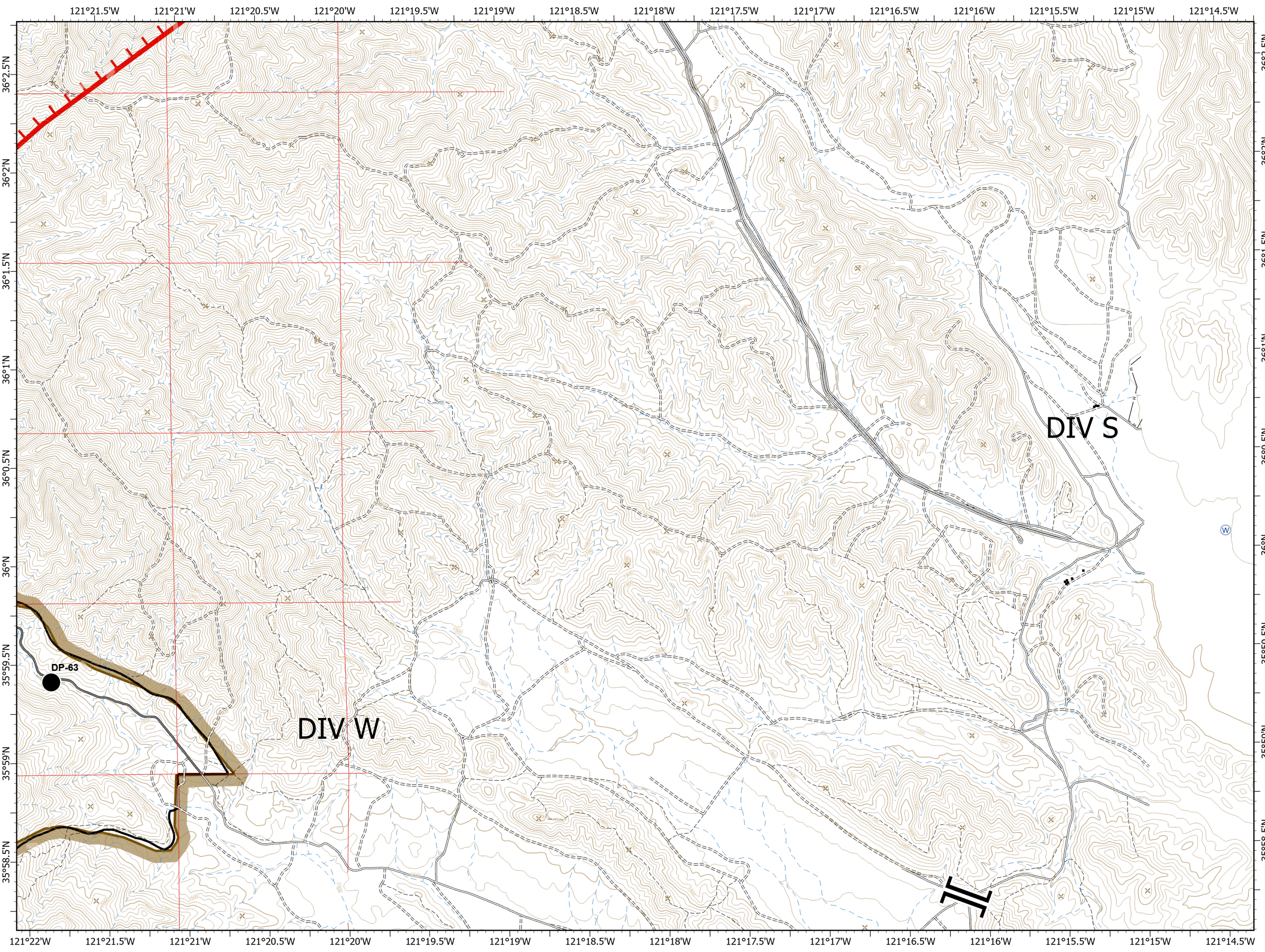
- Drop Point
- Ⓜ Helibase
- Ⓜ Water Source
- || Branch Break
- ▬ Uncontrolled Fire Edge
- ▭ Fort Hunter Liggett



0 1/4 1/2 Miles

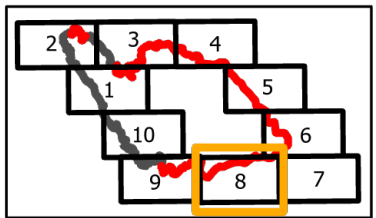


PNW2 GISS
 9/8/2020 2311
 Acres from IR and field reports
 North American 1983 Datum.
 Lat/Long Grid



IAP
 Branch VII-Div W/X
 Page 8 of 10
Dolan Fire
CA-LPF-002428
9/9/2020
 73,089 acres at
 9/8/2020 0200 hrs

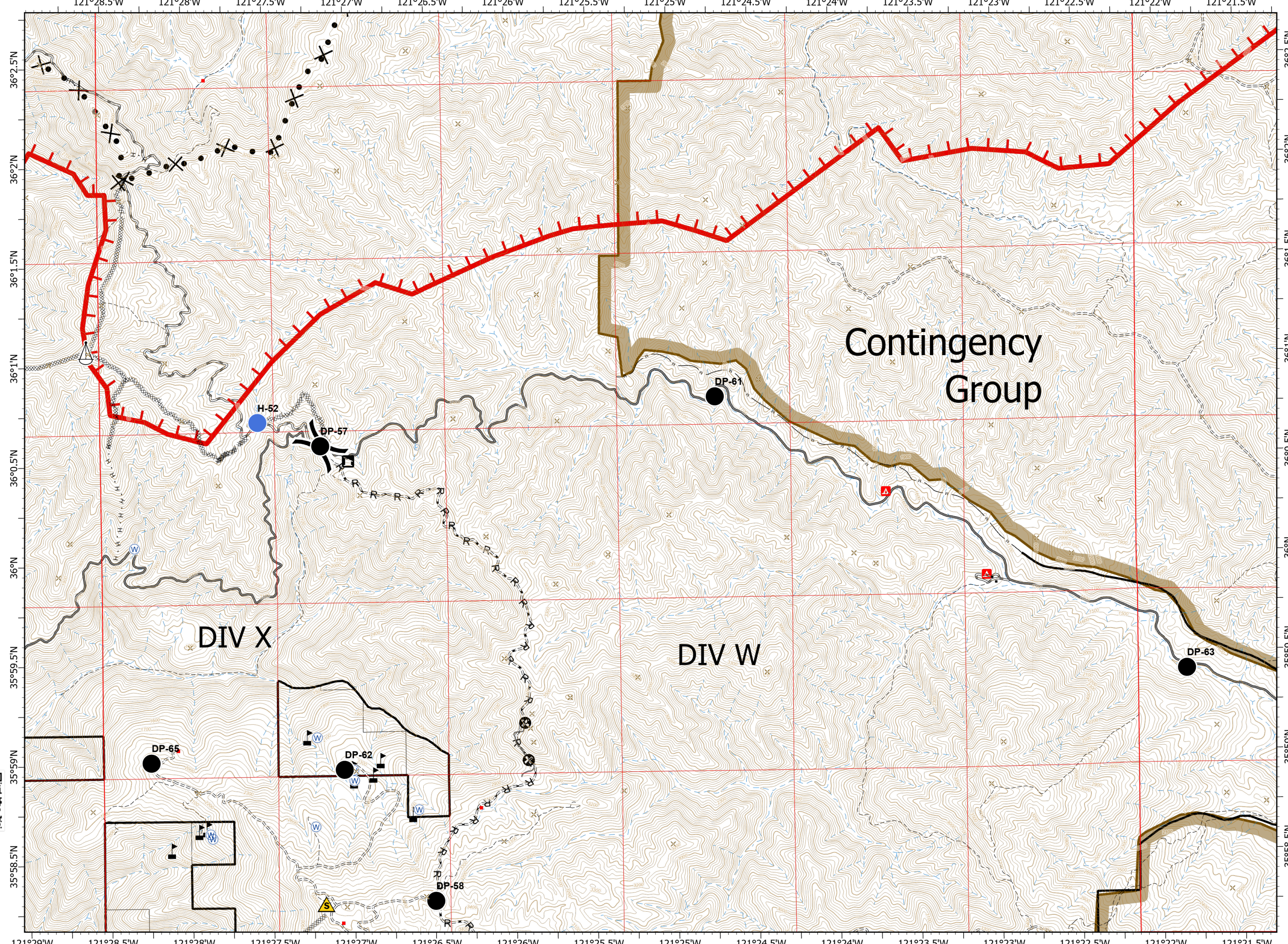
- Drop Point
- Helispot
- ▲ Safety Zone
- ⚙ Sling Site
- Ⓜ Water Source
- 🚒 Value at Risk
-) Division Break
- Uncontrolled Fire Edge
- ⊘ Completed Dozer Line
- Completed Hand Line
- Road as Completed Line
- × Proposed Dozer Line
- ⊙ Other
- ▭ Fort Hunter Liggett



0 1/4 1/2 Miles

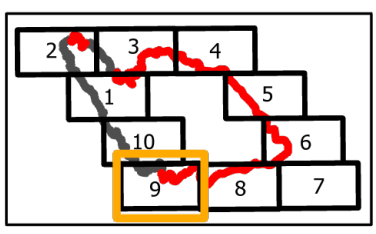


PNW2 GISS
 9/8/2020 2311
 Acres from IR and field reports
 North American 1983 Datum.
 Lat/Long Grid



IAP
 Branch VII-Div Y/Z
 Page 9 of 10
Dolan Fire
CA-LPF-002428
9/9/2020
 73,089 acres at
 9/8/2020 0200 hrs

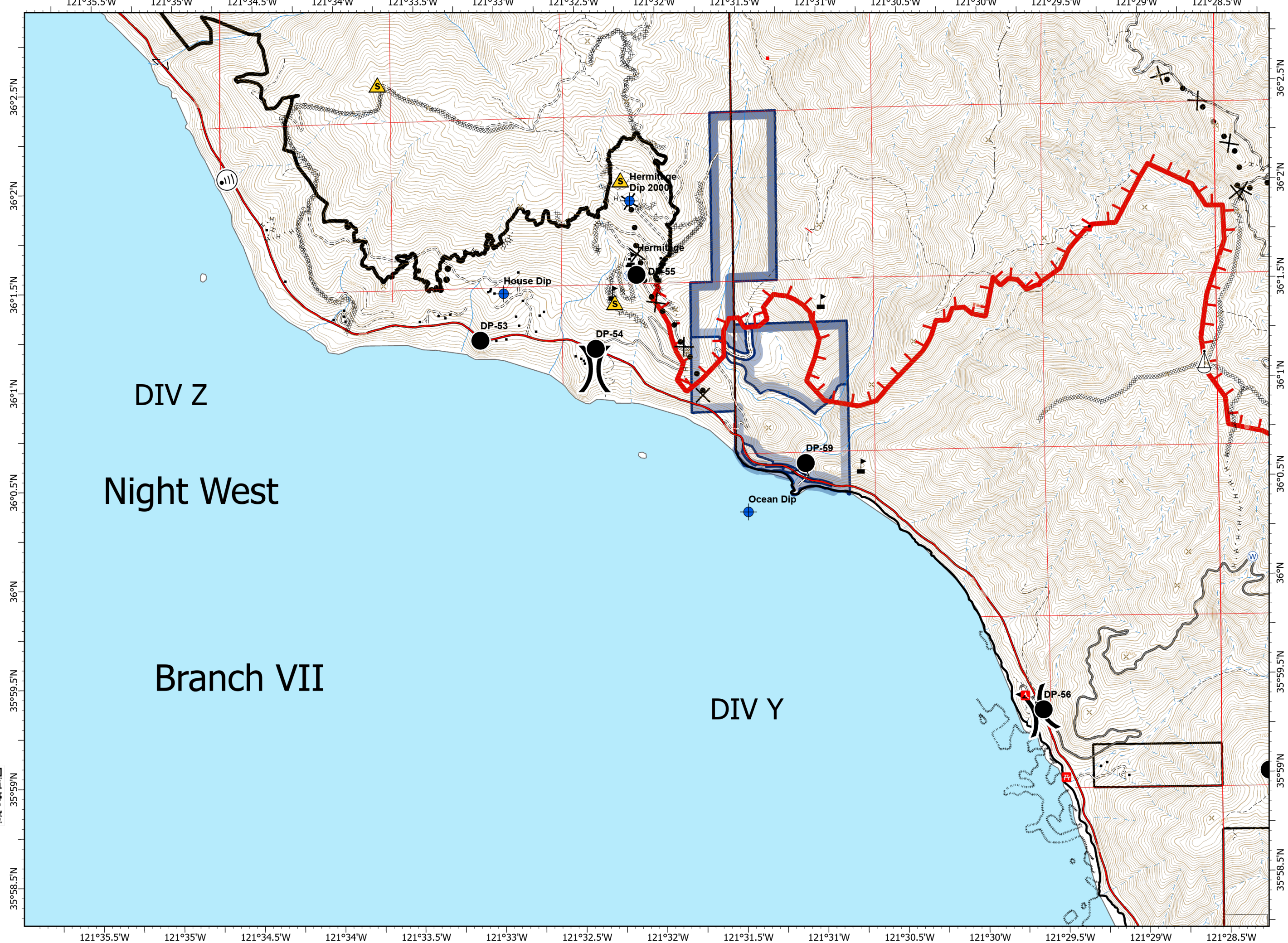
- Drop Point
- ⊕ Dip Site
- Ⓜ Internet Access
- ⚠ Safety Zone
- ⚙ Sling Site
- Ⓜ Water Source
- ⚠ Value at Risk
-) Division Break
- Uncontrolled Fire Edge
- Contained Line
- xxxxx Completed Dozer Line
- h· Completed Hand Line
- ×· Proposed Dozer Line
- Planned Secondary Line
- State Park



0 1/4 1/2 Miles

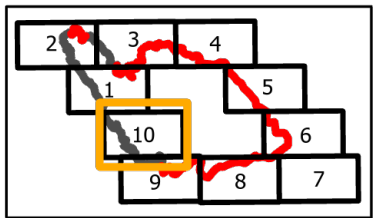


PNW2 GISS
 9/8/2020 2311
 Acres from IR and field reports
 North American 1983 Datum.
 Lat/Long Grid



IAP
 Branch VII-Div Z
 Page 10 of 10
Dolan Fire
CA-LPF-002428
9/9/2020
73,089 acres at 9/8/2020 0200 hrs

- Drop Point
- ⊕ Dip Site
- Helispot
- 📶 Internet Access
- Ⓜ Repeater
- ⚠ Safety Zone
- 🌊 Water Source
- 🏠 Value at Risk
- 🔴 Uncontrolled Fire Edge
- Contained Line
- ⋯ Completed Dozer Line
- ⋯ Completed Hand Line
- × Proposed Dozer Line
- Planned Secondary Line
- State Park



0 1/4 1/2 Miles



PNW2 GISS
 9/8/2020 2312
 Acres from IR and field reports
 North American 1983 Datum.
 Lat/Long Grid

