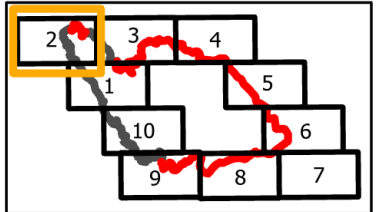


**IAP**  
 Branch I-Div A North/F  
 Page 2 of 10  
**Dolan Fire**  
**CA-LPF-002428**  
**9/9/2020**  
*73,089 acres at 9/8/2020 0200 hrs*

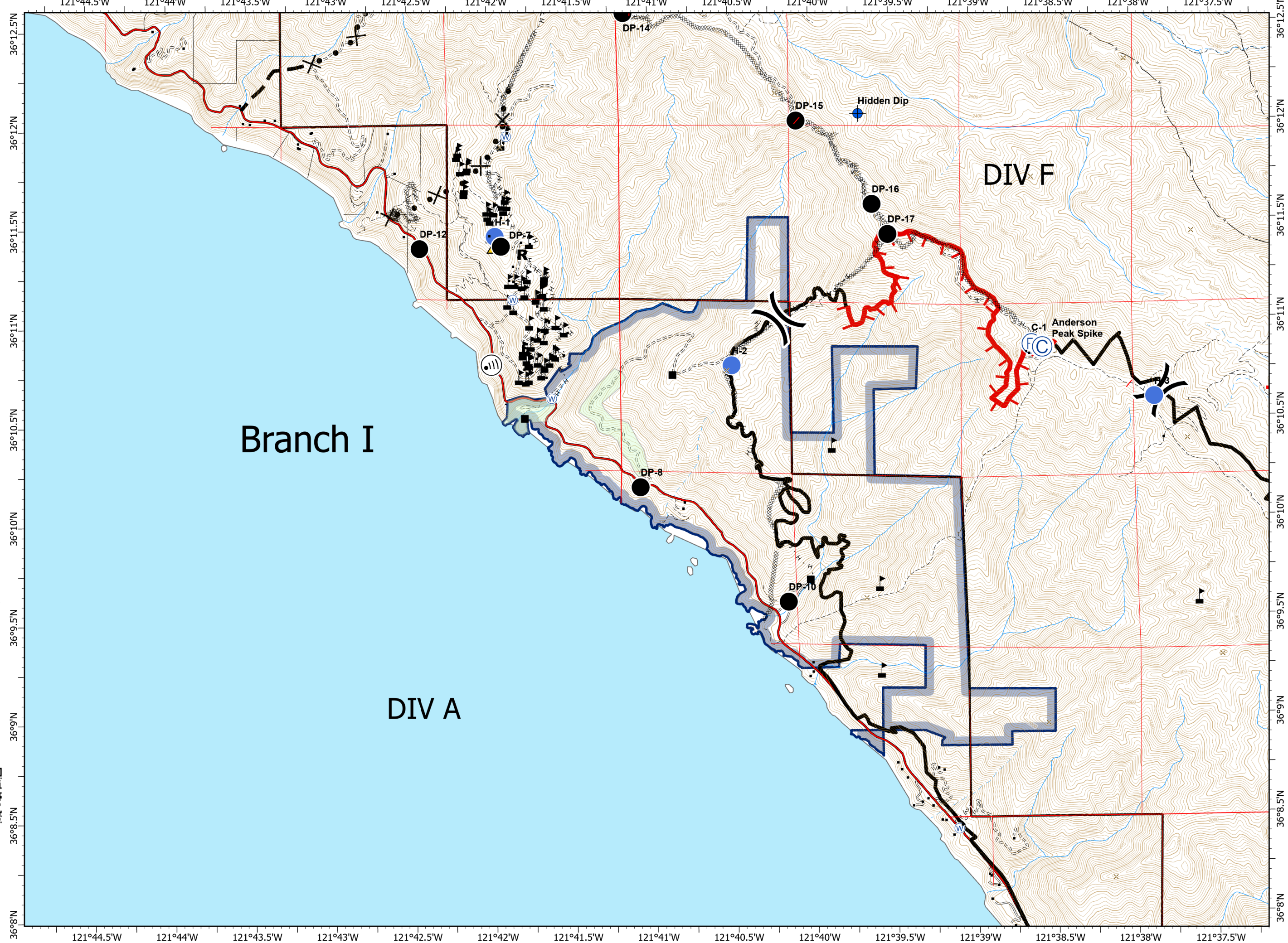
- Drop Point
- ⊙ Camp
- ⊕ Dip Site
- Helispot
- Ⓜ Internet Access
- Ⓡ Repeater
- R** Resource Location
- ▲ Safety Zone
- Ⓜ Water Source
- ⚠ Value at Risk
- ) Division Break
- ┃ Uncontrolled Fire Edge
- Contained Line
- ⊗ Completed Dozer Line
- H Completed Hand Line
- × Proposed Dozer Line
- Planned Fire Line
- Sensitive Natural Resources
- Sensitive Historical Resources
- State Park



0 1/4 1/2 Miles



PNW2 GISS  
 9/8/2020 2314  
 Acres from IR and field reports  
 North American 1983 Datum.  
 LatLong Grid



Branch I

DIV A

DIV F

C-1 Anderson Peak Spike

Hidden Dip

DP-14

DP-15

DP-16

DP-17

DP-12

DP-7

DP-8

DP-10

