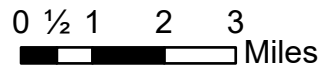


IAP Index

Dolan Fire
CA-LPF-002428
9/12/2020

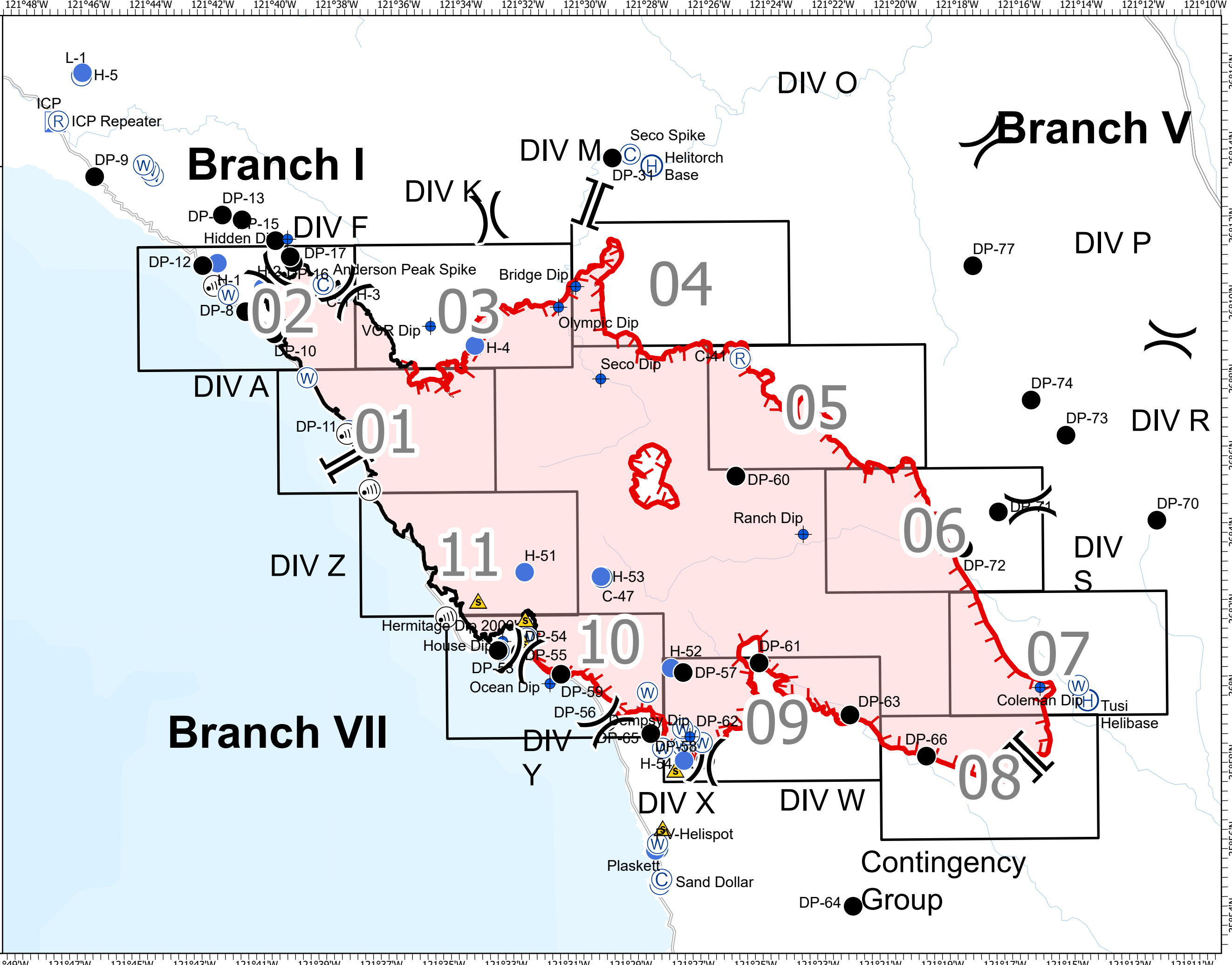
113,486 acres at 9/10/2020 2200 hrs



- IAP Map Index
- Camp
- Dip Site
- Drop Point
- Helibase
- Helispot
- Incident Command Post
- Internet Access
- Repeater
- Safety Zone
- Water Source
- Division Break
- Branch Break
- Uncontrolled Fire Edge
- Contained Line
- Wildfire Daily Fire Perimeter

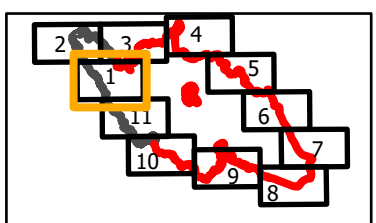


PNW2 GISS
9/11/2020 2121
Acres from IR and field reports
North American 1983 Datum.
LatLong Grid



IAP
 Branch I-Div A South
 Page 1 of 11
Dolan Fire
CA-LPF-002428
9/12/2020
 113,486 acres at
 9/10/2020 2200 hrs

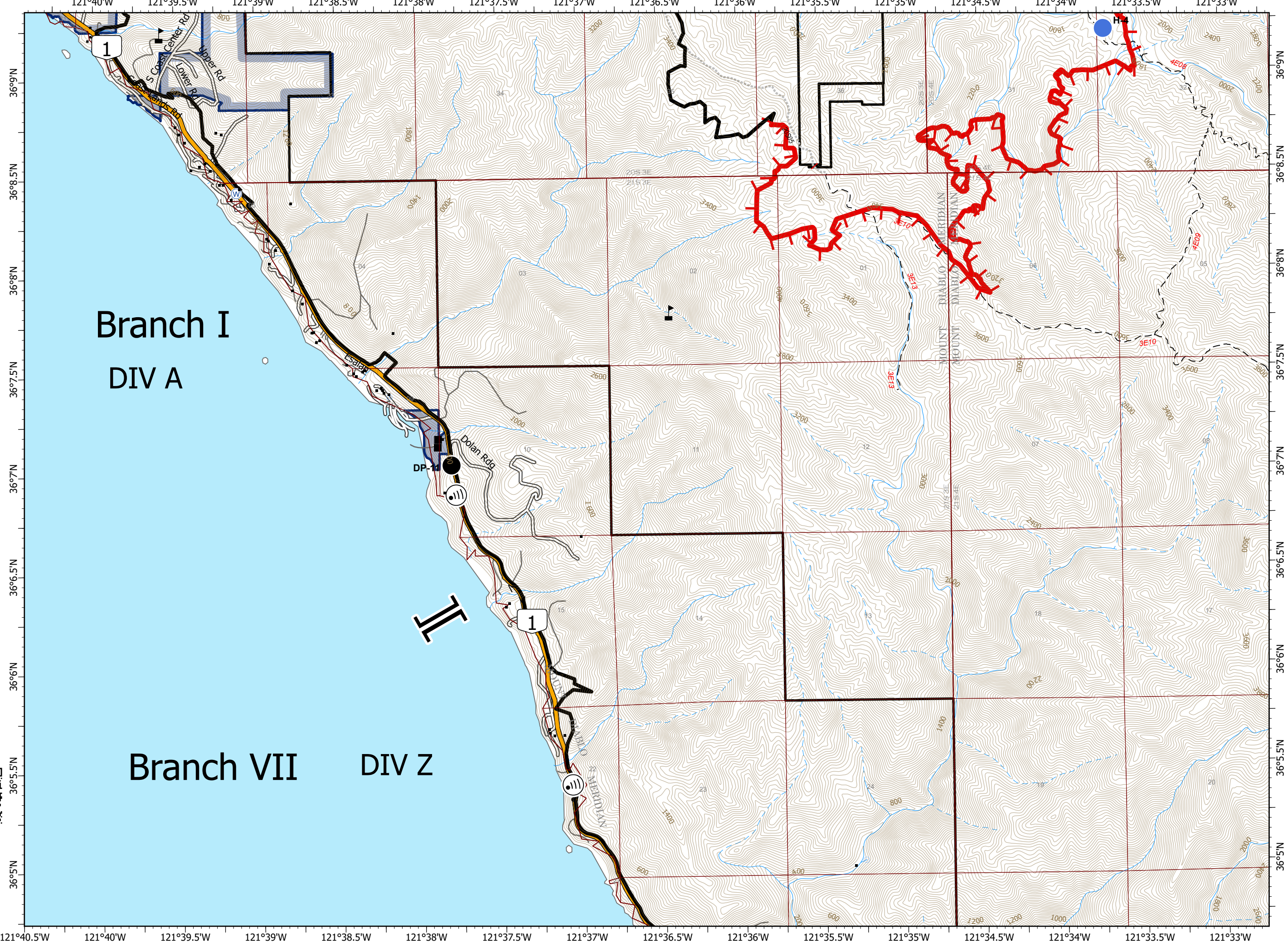
- Drop Point
- Helispot
- Ⓜ Internet Access
- Ⓜ Water Source
- ▲ Value at Risk
- || Branch Break
- ┌ Uncontrolled Fire Edge
- Contained Line
- Sensitive Natural Resources
- Sensitive Historical Resources
- State Park



0 1/4 1/2 Miles

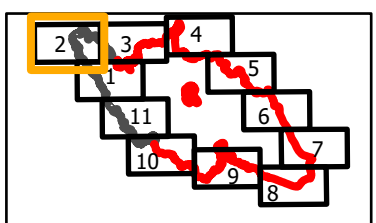


PNW2 GISS
 9/11/2020 2137
 Acres from IR and field reports
 North American 1983 Datum.
 LatLong Grid



IAP
 Branch I-Div A North/F
 Page 2 of 11
Dolan Fire
CA-LPF-002428
9/12/2020
 113,486 acres at
 9/10/2020 2200 hrs

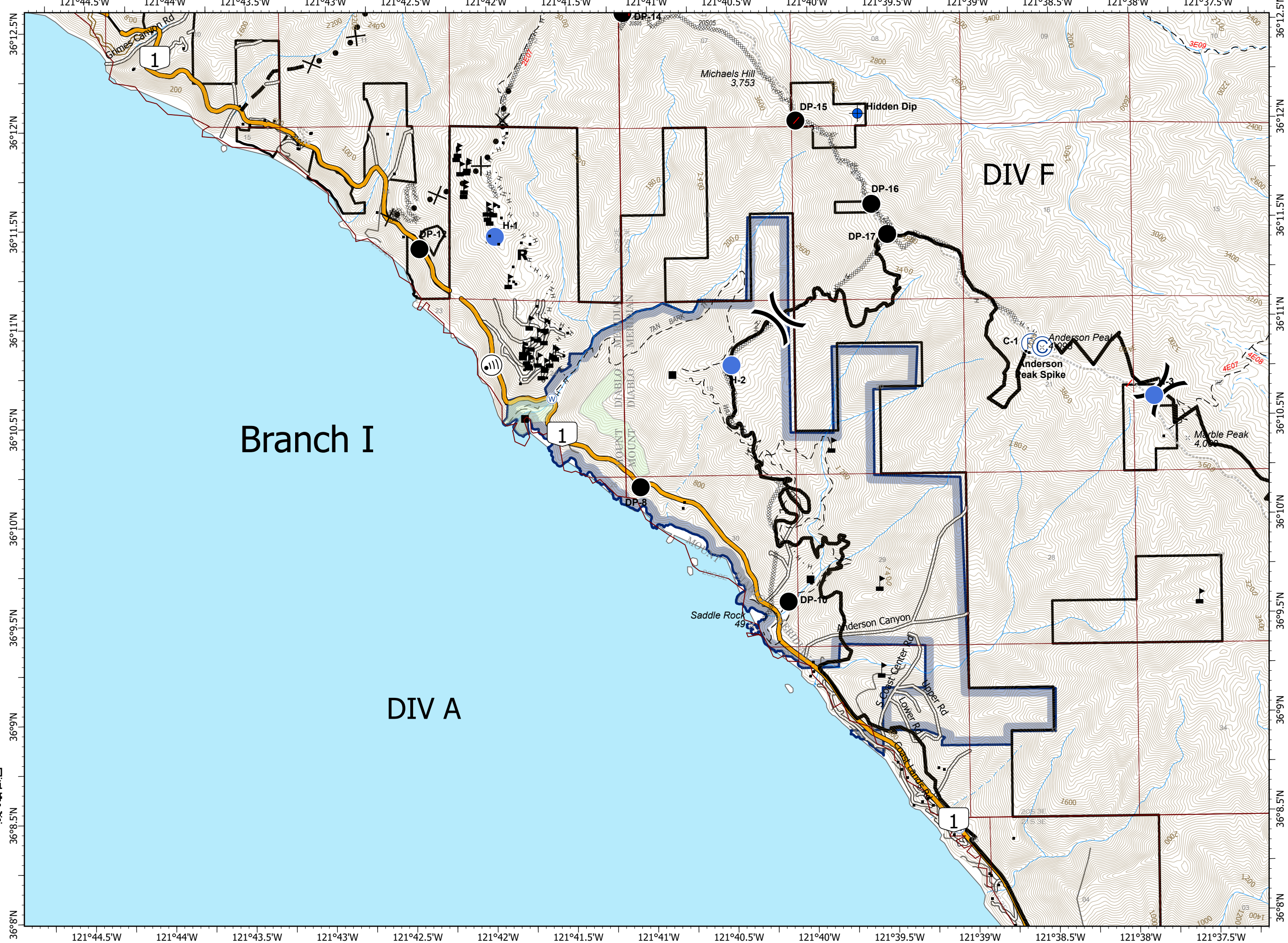
- Drop Point
- ⊙ Camp
- ⊕ Dip Site
- Helispot
- Ⓜ Internet Access
- Ⓡ Repeater
- R** Resource Location
- Ⓜ Water Source
- ⚠ Value at Risk
-) Division Break
- Contained Line
- ⊗ Completed Dozer Line
- H Completed Hand Line
- × Proposed Dozer Line
- Planned Fire Line
- Sensitive Natural Resources
- Sensitive Historical Resources
- State Park



0 1/4 1/2 Miles

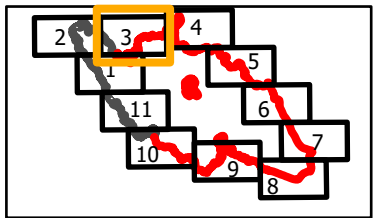


PNW2 GISS
 9/11/2020 2137
 Acres from IR and field reports
 North American 1983 Datum.
 LatLong Grid



IAP
 Branch I-Div K/M
 Page 3 of 11
Dolan Fire
CA-LPF-002428
9/12/2020
 113,486 acres at
 9/10/2020 2200 hrs

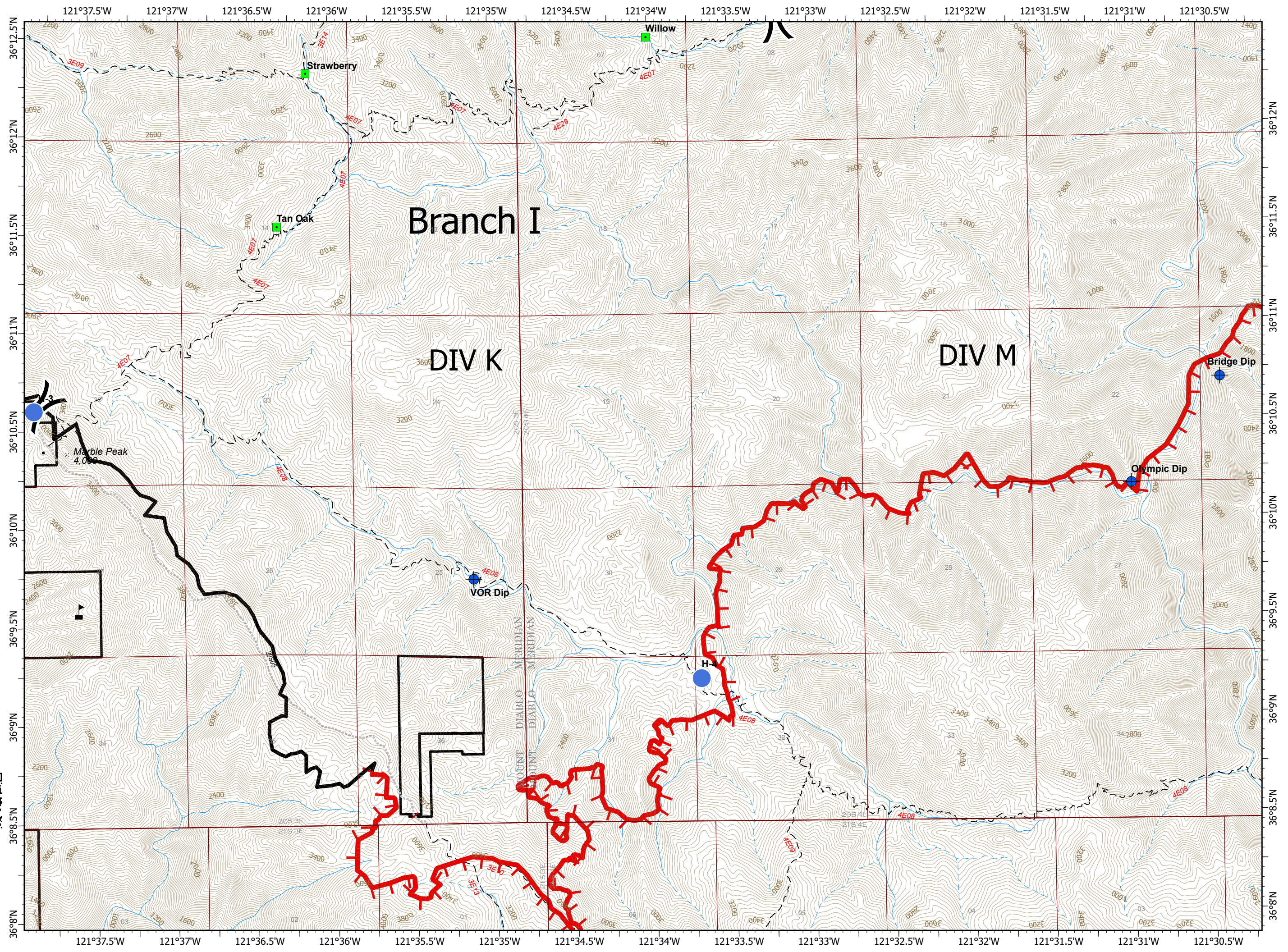
-  Dip Site
-  Helispot
-  Landmark
-  Value at Risk
-  Division Break
-  Uncontrolled Fire Edge
-  Contained Line








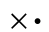

0 1/4 1/2 Miles

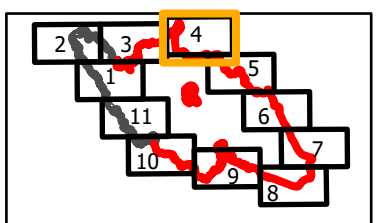


PNW2 GISS
 9/11/2020 2137
 Acres from IR and field reports
 North American 1983 Datum.
 Lat/Long Grid



IAP
 Branch V-Div O/P
 Page 4 of 11
Dolan Fire
CA-LPF-002428
9/12/2020
 113,486 acres at
 9/10/2020 2200 hrs

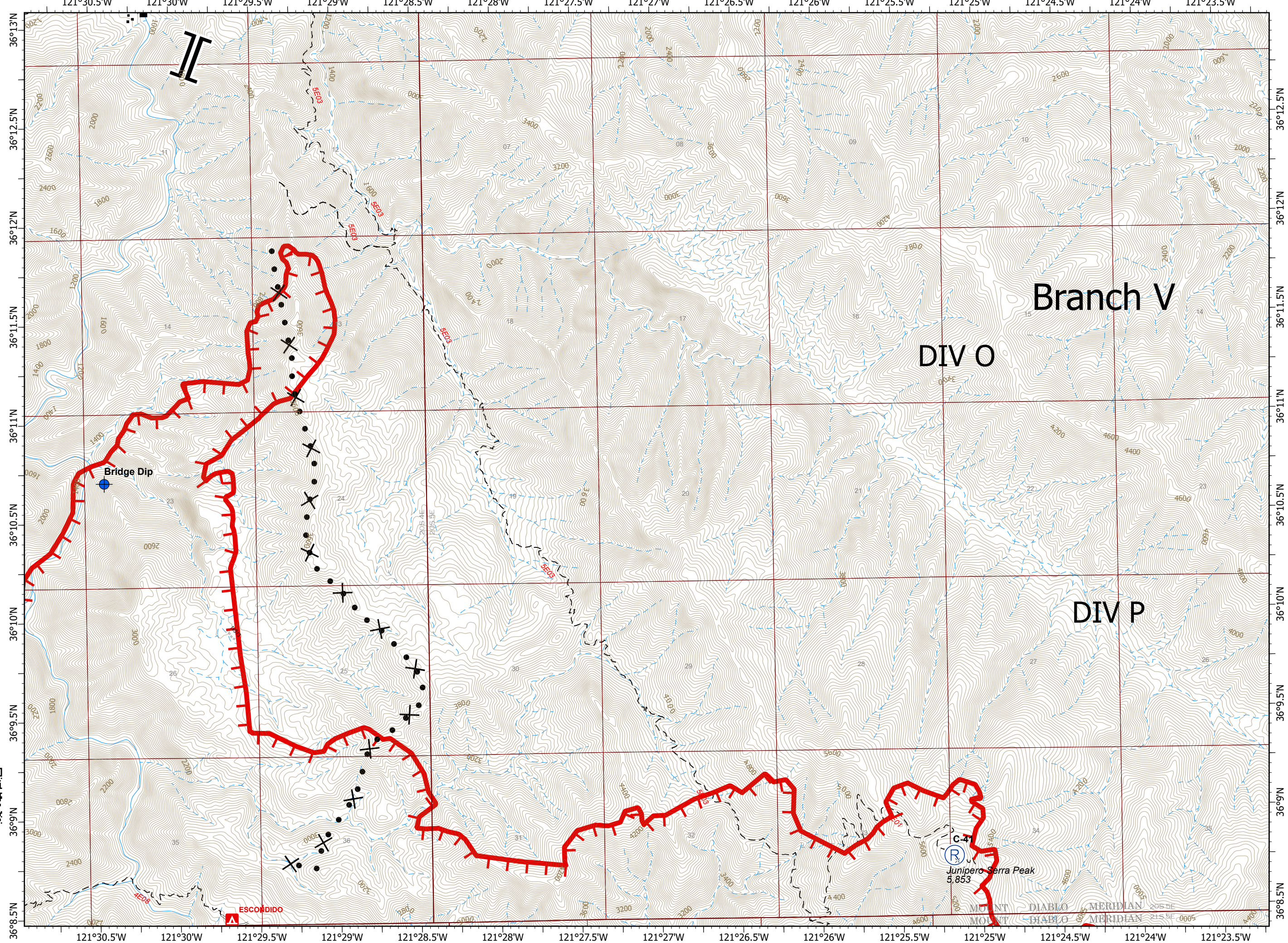
-  Dip Site
-  Repeater
-  Value at Risk
-  Branch Break
-  Uncontrolled Fire Edge
-  Proposed Dozer Line
-  Planned Fire Line



0 1/4 1/2 Miles



PNW2 GISS
 9/11/2020 2137
 Acres from IR and field reports
 North American 1983 Datum.
 Lat/Long Grid



Branch V

DIV O

DIV P

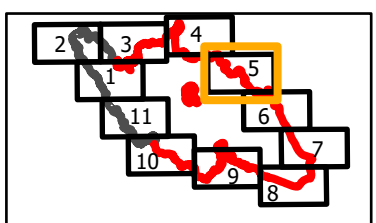
Bridge Dip

C-47
 Junipero Serra Peak
 5,853

ESCONDIDO

IAP
 Branch V-Div R
 Page 5 of 11
Dolan Fire
CA-LPF-002428
9/12/2020
 113,486 acres at
 9/10/2020 2200 hrs

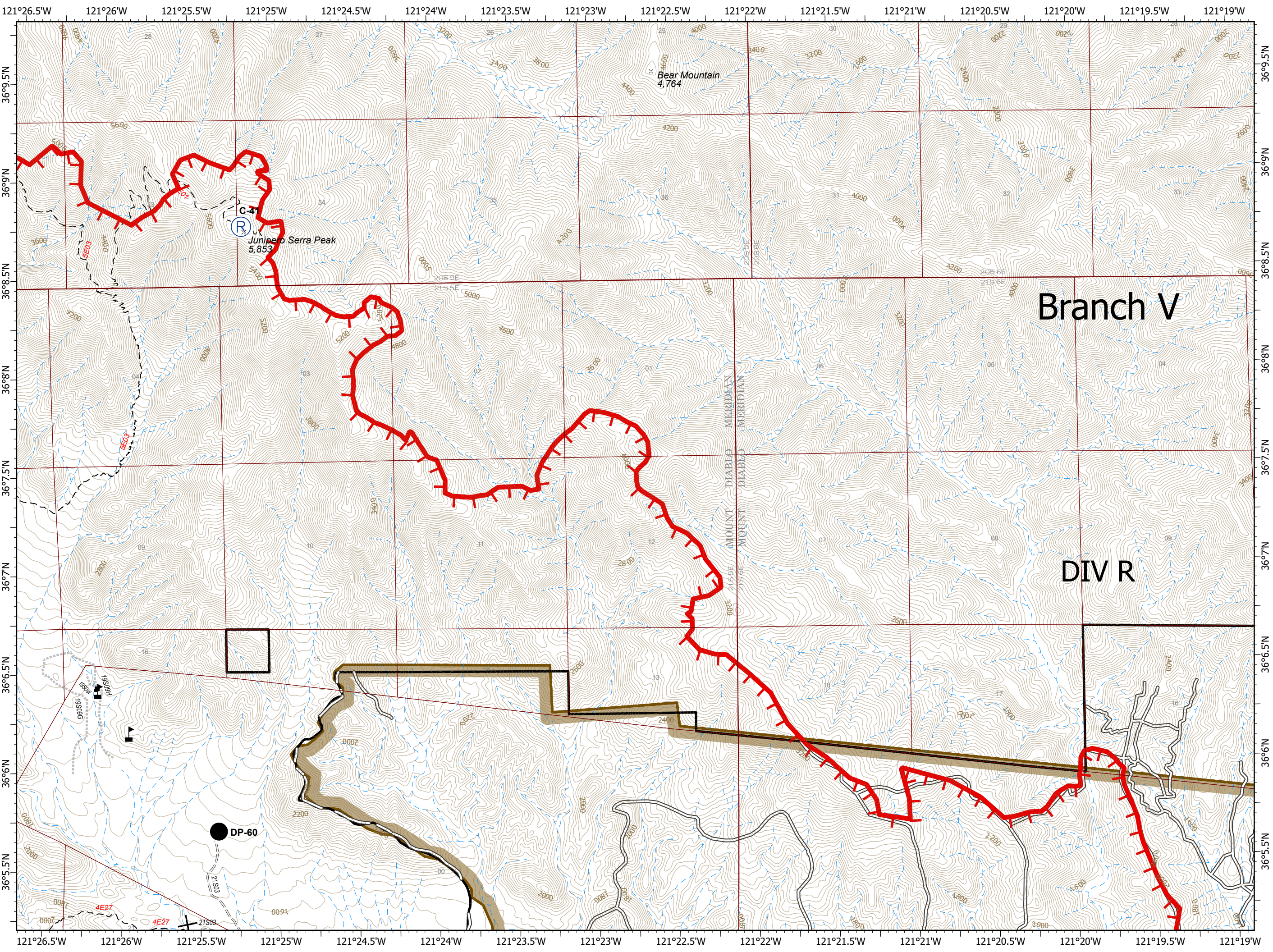
- Drop Point
- Ⓡ Repeater
- ▲ Value at Risk
- ▬ Uncontrolled Fire Edge
- × Proposed Dozer Line
- ▭ Fort Hunter Liggett



0 1/4 1/2 Miles

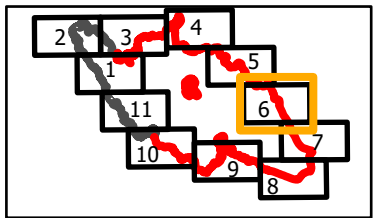


PNW2 GISS
 9/11/2020 2137
 Acres from IR and field reports
 North American 1983 Datum.
 Lat/Long Grid



IAP
 Branch V-Div S North
 Page 6 of 11
Dolan Fire
CA-LPF-002428
9/12/2020
 113,486 acres at
 9/10/2020 2200 hrs

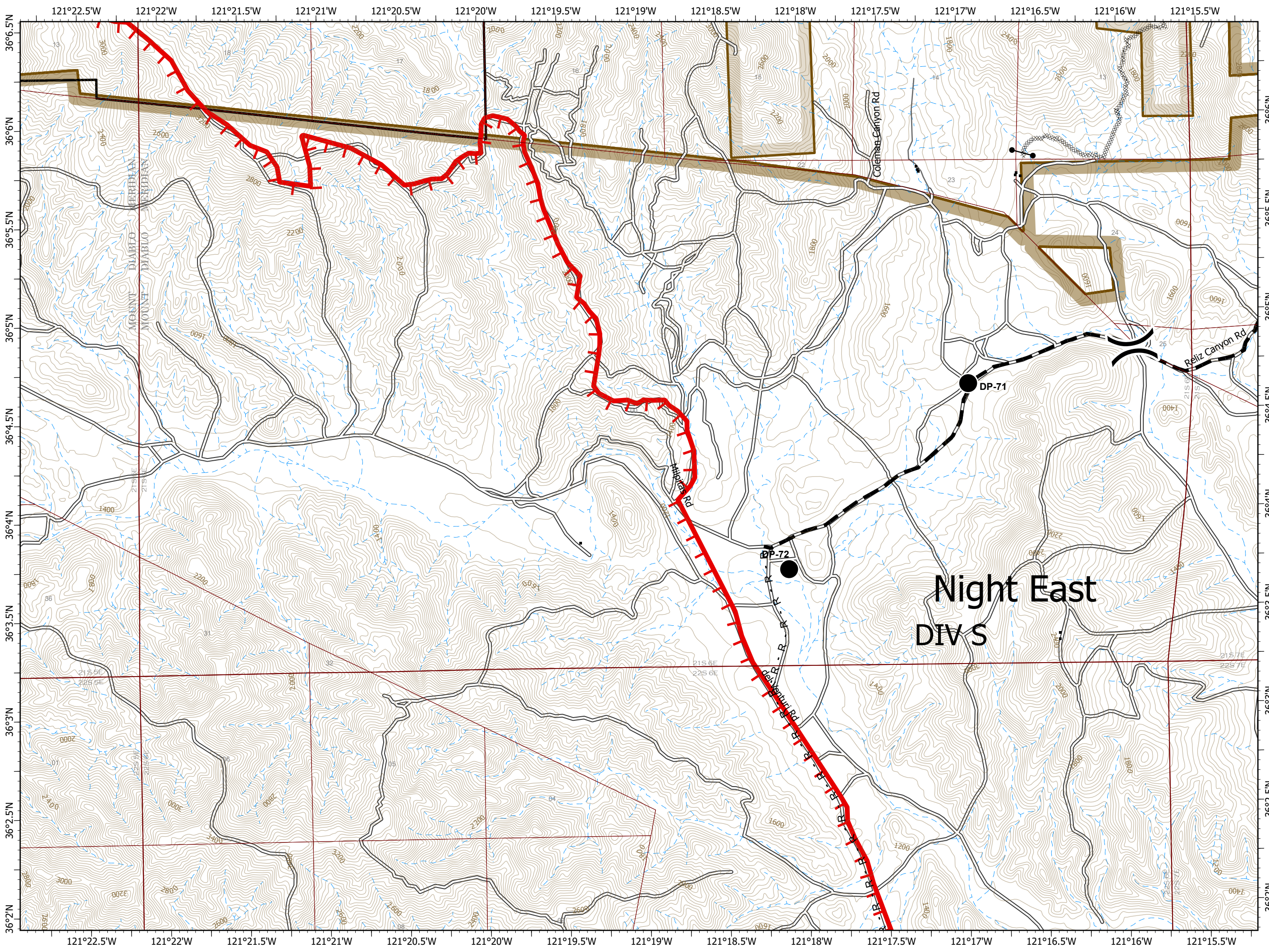
- Drop Point
- Gate
-) Division Break
- Uncontrolled Fire Edge
- Completed Dozer Line
- R Road as Completed Line
- Planned Fire Line
- Fort Hunter Liggett



0 1/4 1/2 Miles



PNW2 GISS
 9/11/2020 2138
 Acres from IR and field reports
 North American 1983 Datum.
 LatLong Grid









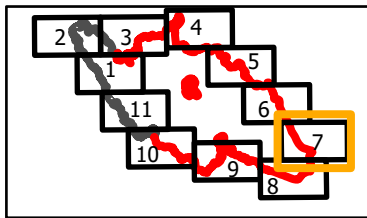
IAP

Branch V-Div S South
Page 7 of 11

Dolan Fire CA-LPF-002428 9/12/2020

113,486 acres at
9/10/2020 2200 hrs

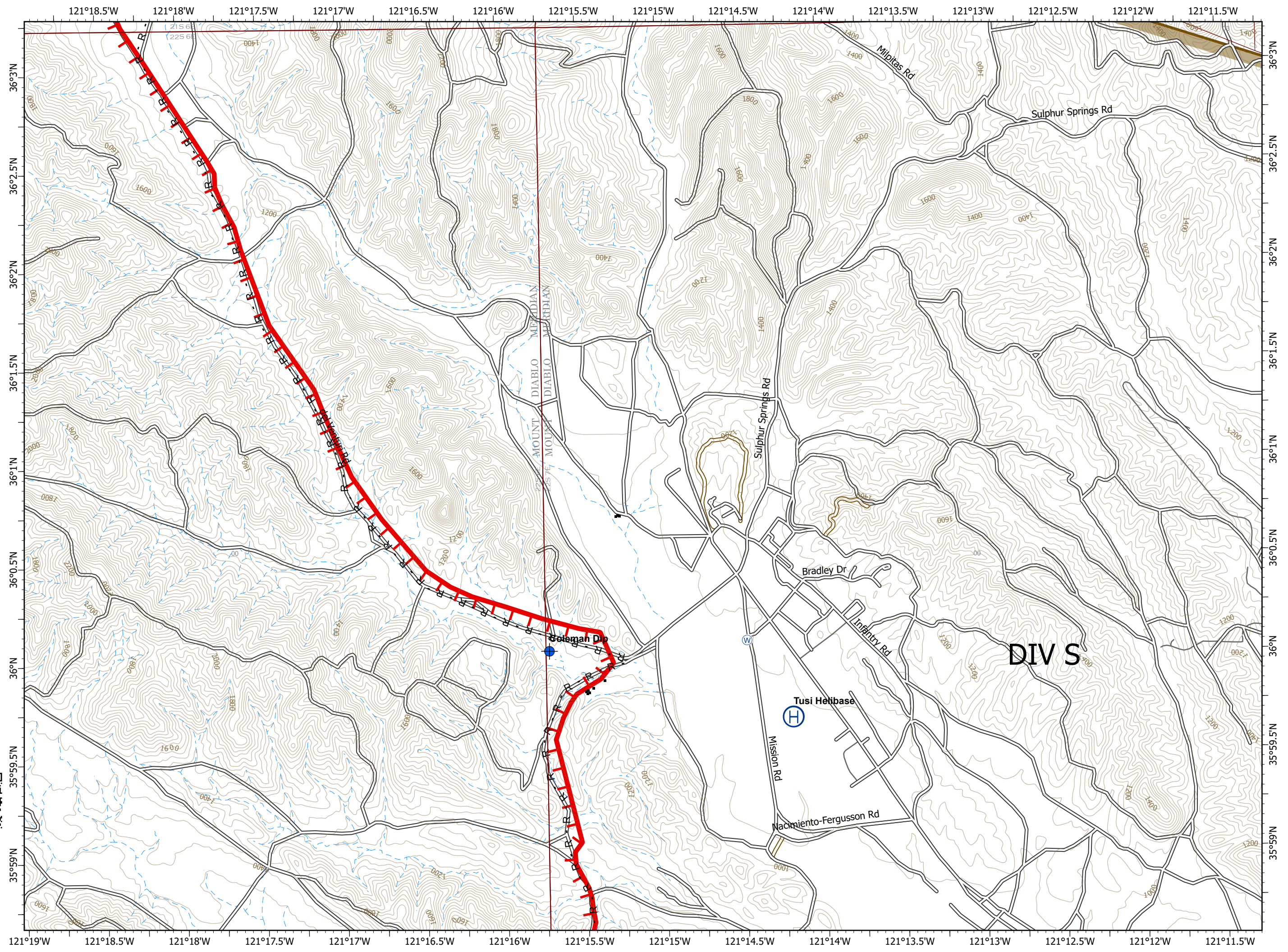
-  Dip Site
-  Helibase
-  Water Source
-  Uncontrolled Fire Edge
-  Road as Completed Line
-  Fort Hunter Liggett



0 1/4 1/2 Miles

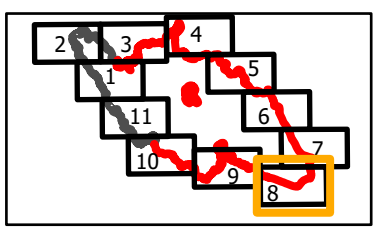


PNW2 GISS
9/11/2020 2138
Acres from IR and field reports
North American 1983 Datum
Lat/Long Grid



IAP
 Branch VII-Div W East
 Page 8 of 11
Dolan Fire
CA-LPF-002428
9/12/2020
 113,486 acres at
 9/10/2020 2200 hrs

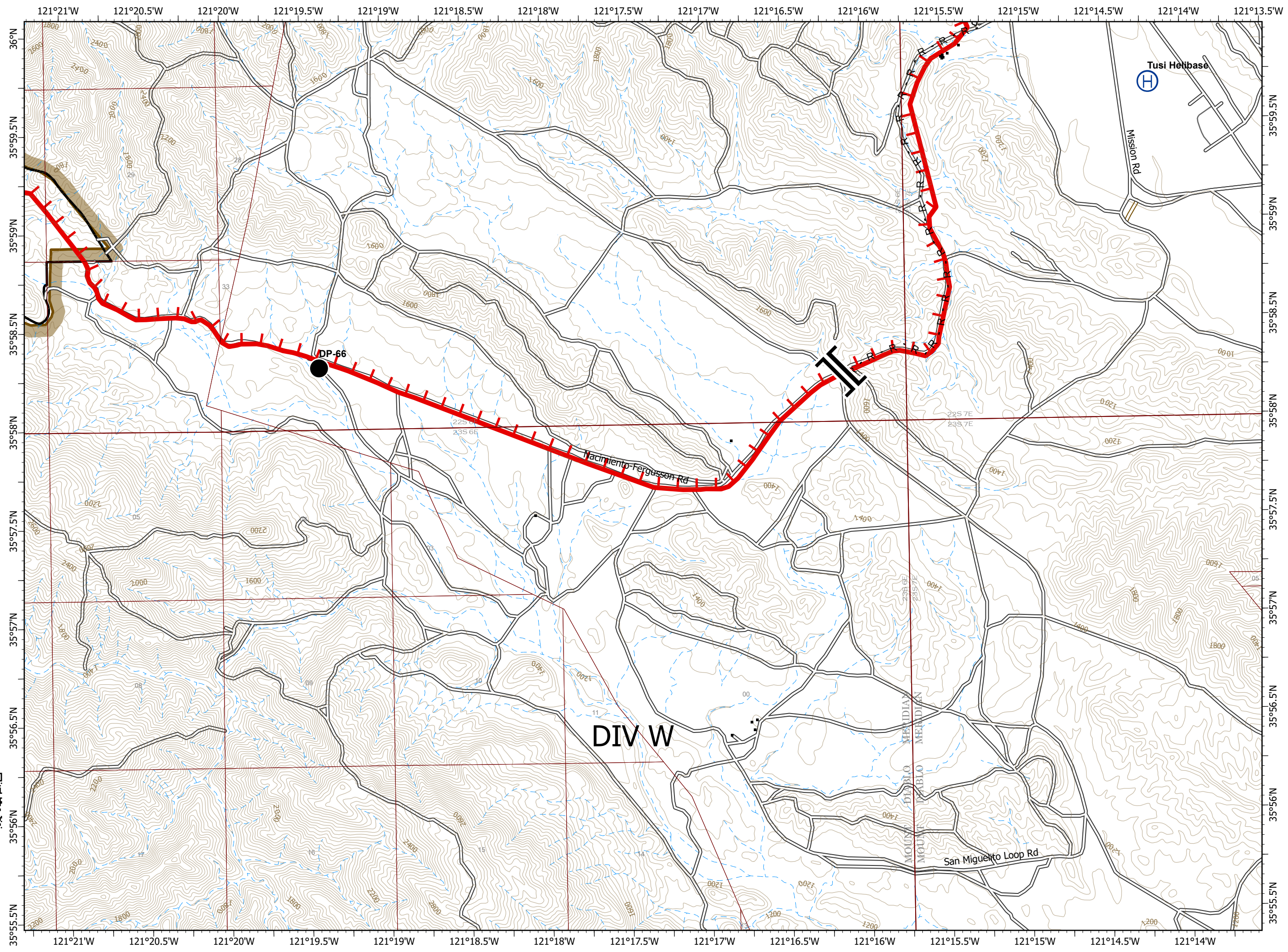
- Drop Point
- ⊕ Dip Site
- Ⓜ Helibase
- Ⓜ Water Source
- || Branch Break
- ▬ Uncontrolled Fire Edge
- Ⓜ Road as Completed Line
- ▭ Fort Hunter Liggett



0 1/4 1/2 Miles



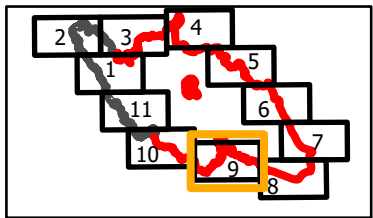
PNW2 GISS
 9/11/2020 2138
 Acres from IR and field reports
 North American 1983 Datum.
 Lat/Long Grid



DIV W

IAP
 Branch VII-Div W West
 Page 9 of 11
Dolan Fire
CA-LPF-002428
9/12/2020
 113,486 acres at
 9/10/2020 2200 hrs

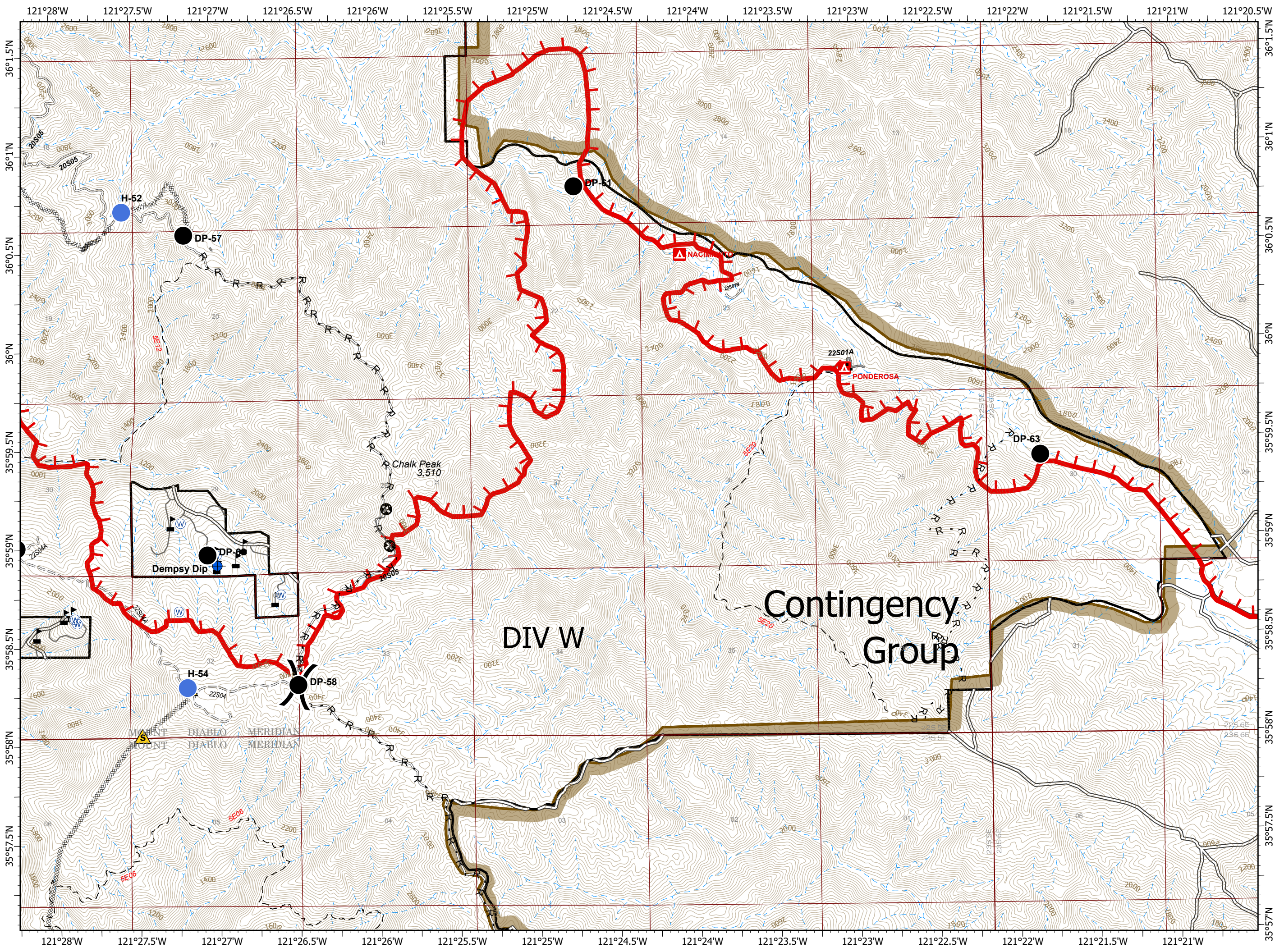
- Drop Point
- ⊕ Dip Site
- Helisport
- ▲ Safety Zone
- Ⓜ Water Source
- ⚠ Value at Risk
-) Division Break
- Uncontrolled Fire Edge
- xxxxx Completed Dozer Line
- R Road as Completed Line
- ⊕ Other
- ▭ Fort Hunter Liggett



0 1/4 1/2 Miles

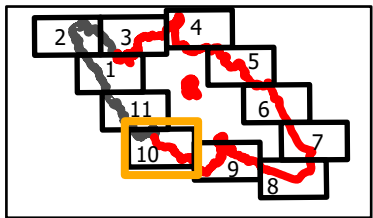


PNW2 GISS
 9/11/2020 2138
 Acres from IR and field reports
 North American 1983 Datum.
 Lat/Long Grid



IAP
 Branch VII-Div X/Y/Z
 Page 10 of 11
Dolan Fire
CA-LPF-002428
9/12/2020
 113,486 acres at
 9/10/2020 2200 hrs

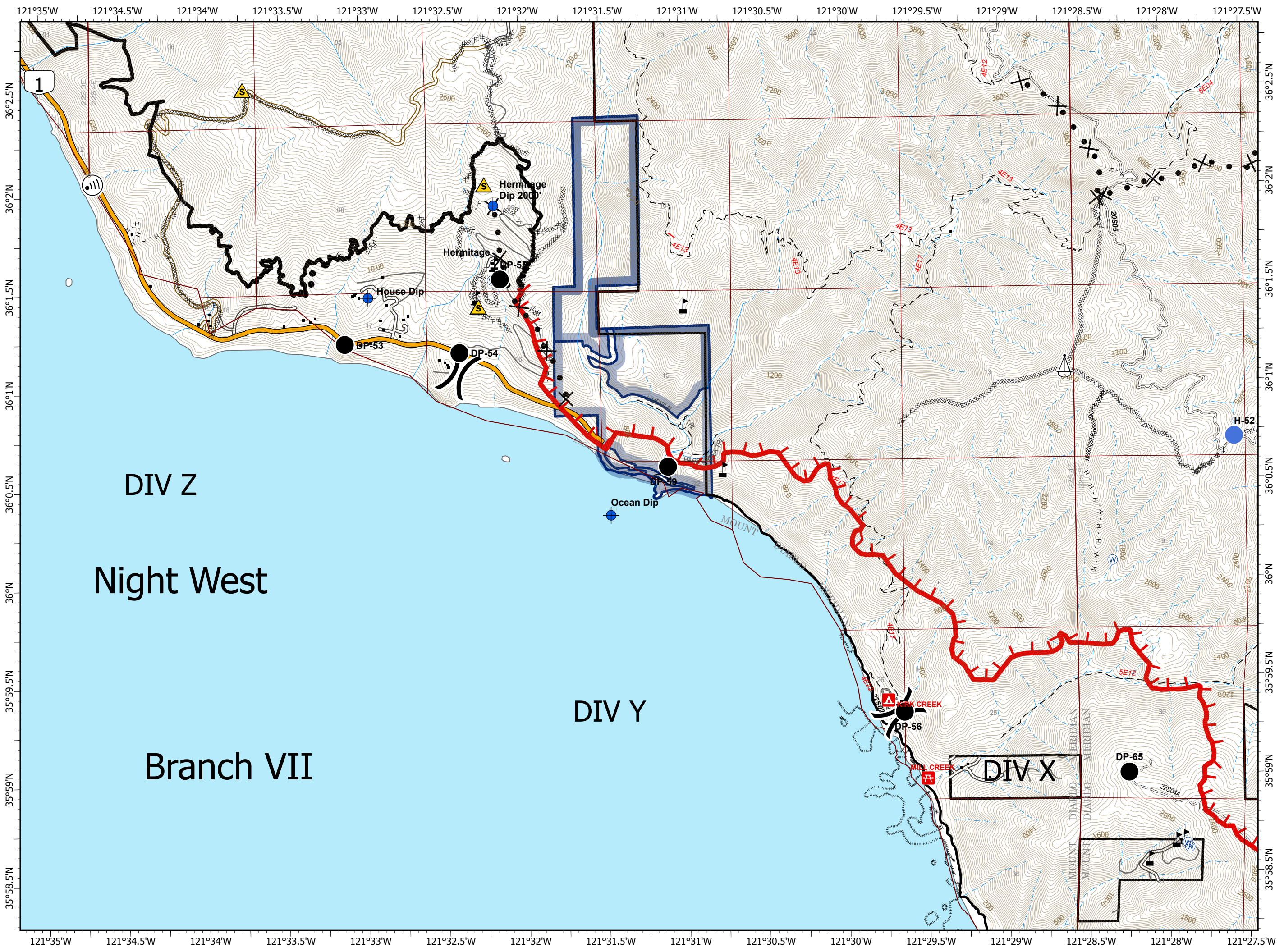
- Drop Point
- ⊕ Dip Site
- Helispot
- Ⓜ Internet Access
- ⚠ Safety Zone
- ⚡ Sling Site
- Ⓜ Water Source
- ⚠ Value at Risk
-) Division Break
- Uncontrolled Fire Edge
- Contained Line
- ⊗ Completed Dozer Line
- Completed Hand Line
- × Proposed Dozer Line
- Planned Secondary Line
- State Park



0 1/4 1/2 Miles

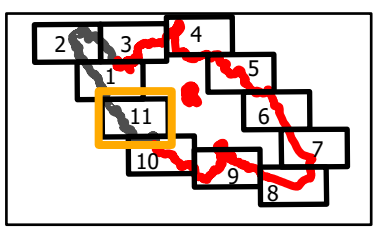


PNW2 GISS
 9/11/2020 2138
 Acres from IR and field reports
 North American 1983 Datum.
 Lat/Long Grid



IAP
 Branch VII-Div Z
 Page 11 of 11
Dolan Fire
CA-LPF-002428
9/12/2020
 113,486 acres at
 9/10/2020 2200 hrs

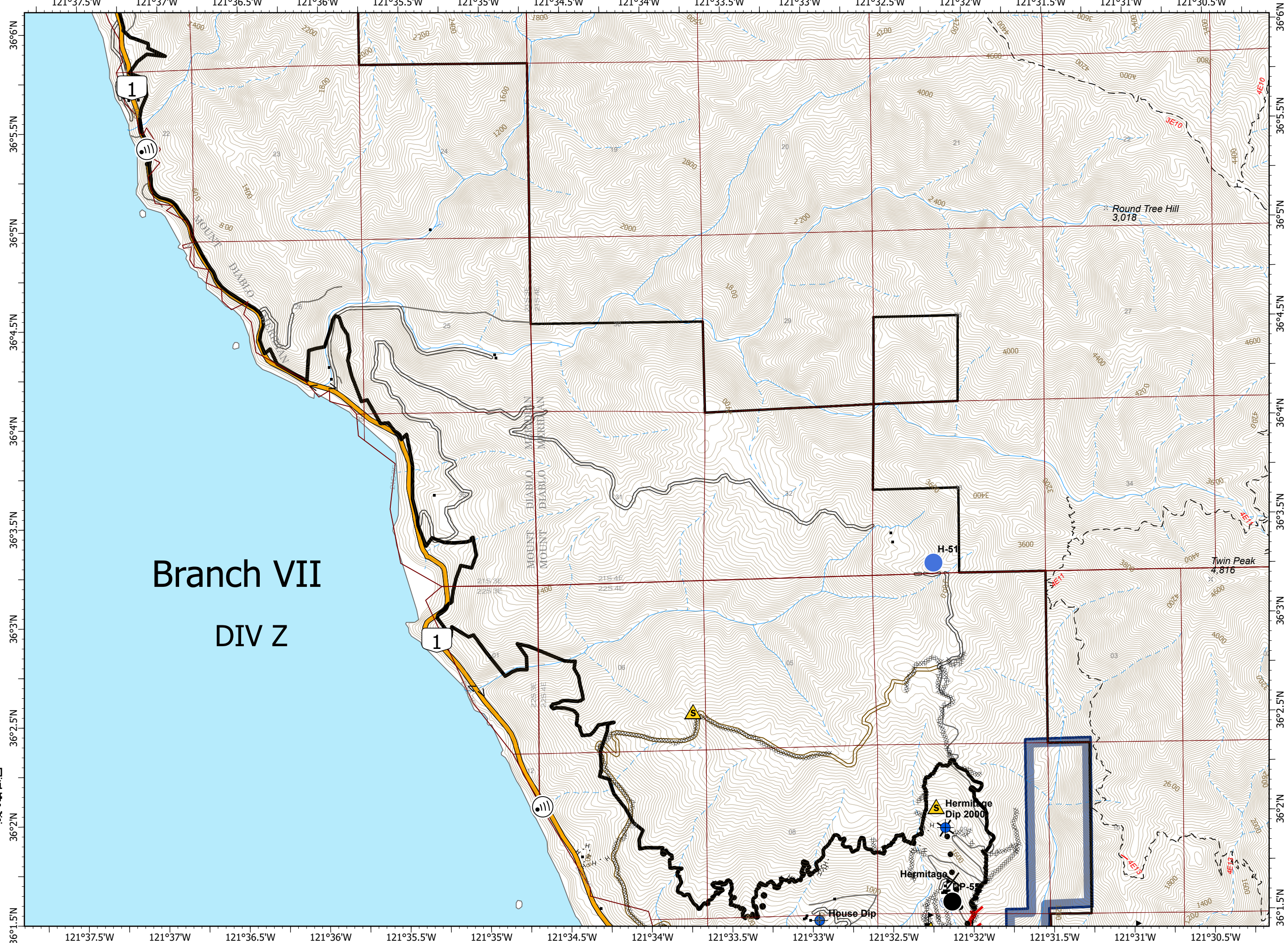
- Drop Point
- ⊕ Dip Site
- Helispot
- Ⓜ Internet Access
- ⚠ Safety Zone
- Ⓜ Water Source
- 🚒 Value at Risk
- 🔴 Uncontrolled Fire Edge
- Contained Line
- ⊘ Completed Dozer Line
- ⋯ Completed Hand Line
- × Proposed Dozer Line
- Planned Secondary Line
- State Park



0 1/4 1/2 Miles



PNW2 GISS
 9/11/2020 2138
 Acres from IR and field reports
 North American 1983 Datum.
 Lat/Long Grid



Branch VII
DIV Z

Round Tree Hill
 3,018

Twin Peak
 4,816

Hermitage
 Dip 2,000

House Dip