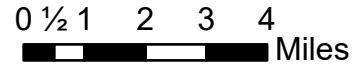


# IAP Index

Dolan Fire  
CA-LPF-002428  
9/16/2020

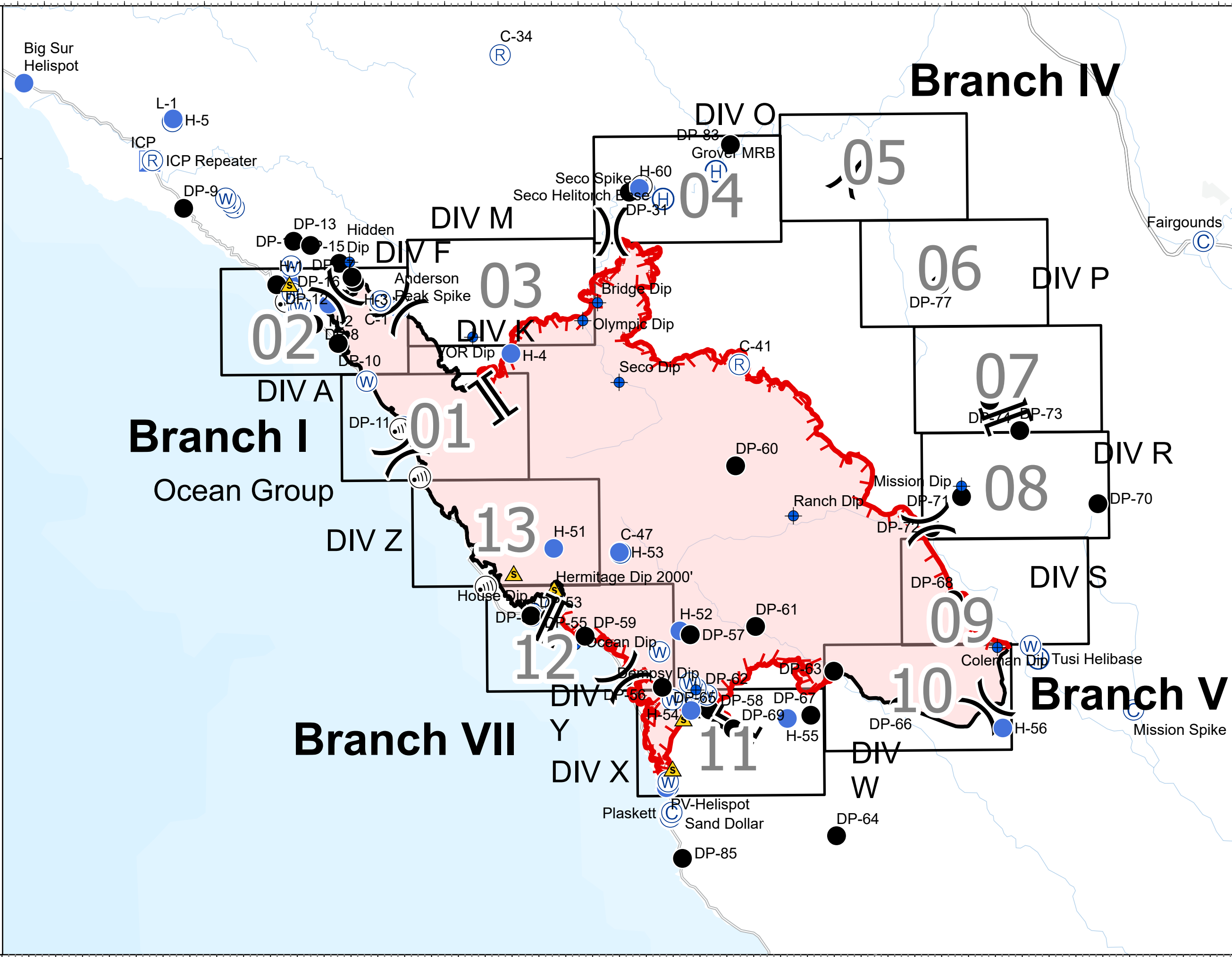
119,448 acres at 9/14/2020 1900 hrs



- IAP Map Index
- Camp
- Dip Site
- Drop Point
- Helibase
- Helispot
- Incident Command Post
- Internet Access
- Repeater
- Safety Zone
- Water Source
- Division Break
- Branch Break
- Uncontrolled Fire Edge
- Contained Line
- Wildfire Daily Fire Perimeter

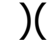
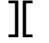


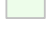




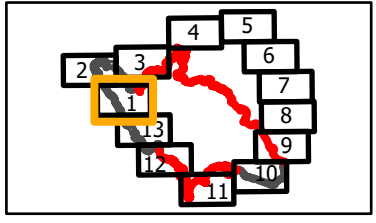
PNW2 GISS  
9/15/2020 2224  
Acres from IR and field reports  
North American 1983 Datum.  
LatLong Grid





**IAP**  
 Branch I/VII-Div A South/Z  
 North  
 Page 1 of 13  
**Dolan Fire**  
**CA-LPF-002428**  
**9/16/2020**  
 119,448 acres at  
 9/14/2020 1900 hrs

-  Division Break
-  Branch Break
-  Uncontrolled Fire Edge
-  Contained Line
-  Sensitive Natural Resources
-  Sensitive Historical Resources
-  State Park

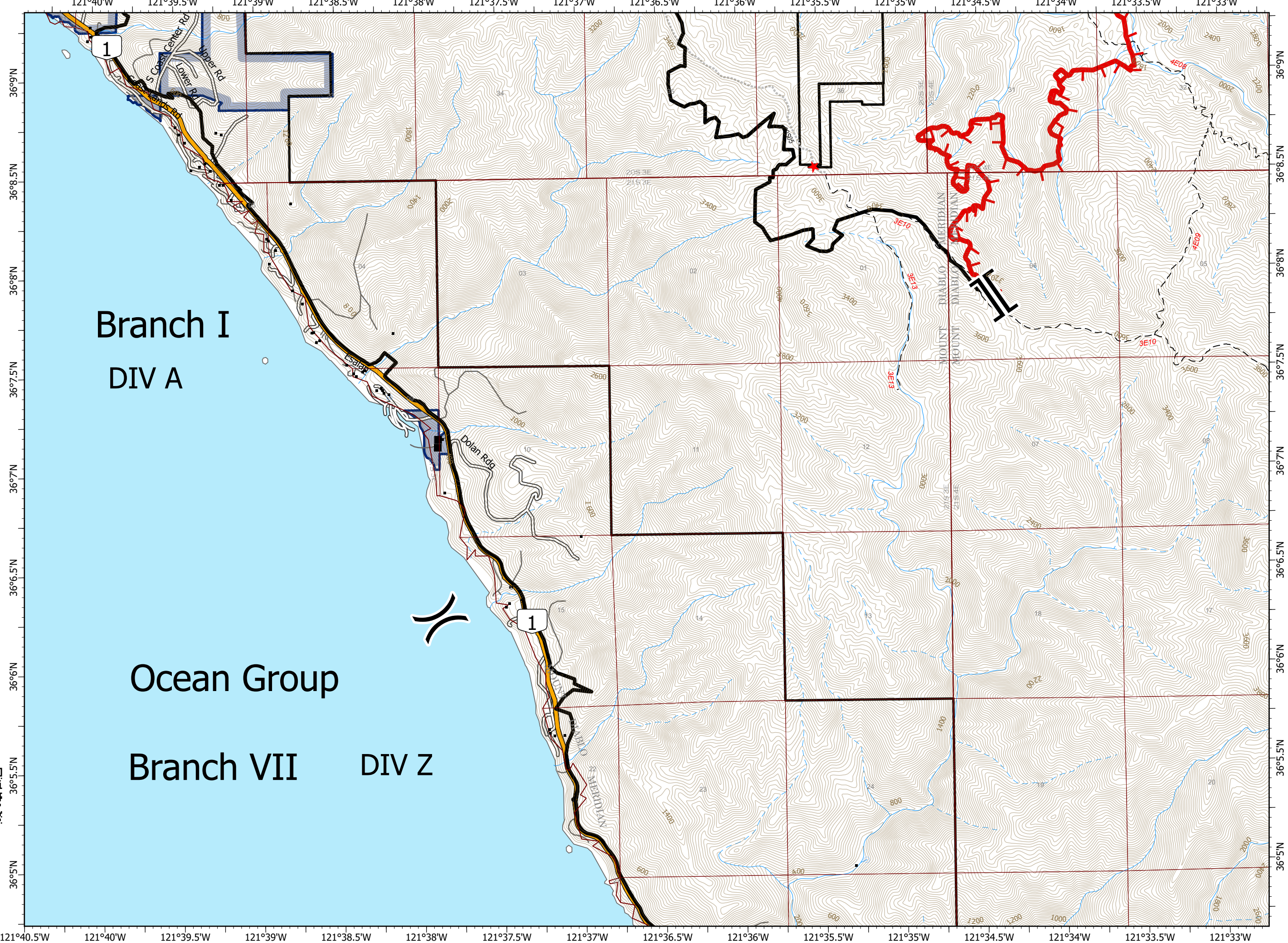


0 1/4 1/2 Miles

N  
W E  
S



PNW2 GISS  
 9/15/2020 2253  
 Acres from IR and field reports  
 North American 1983 Datum.  
 LatLong Grid

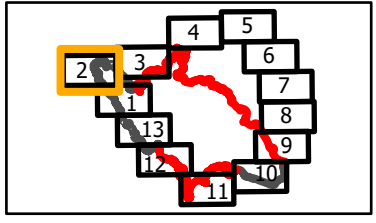




**IAP**  
 Branch I-Div A North/F  
 Page 2 of 13

**Dolan Fire**  
 CA-LPF-002428  
 9/16/2020  
 119,448 acres at  
 9/14/2020 1900 hrs

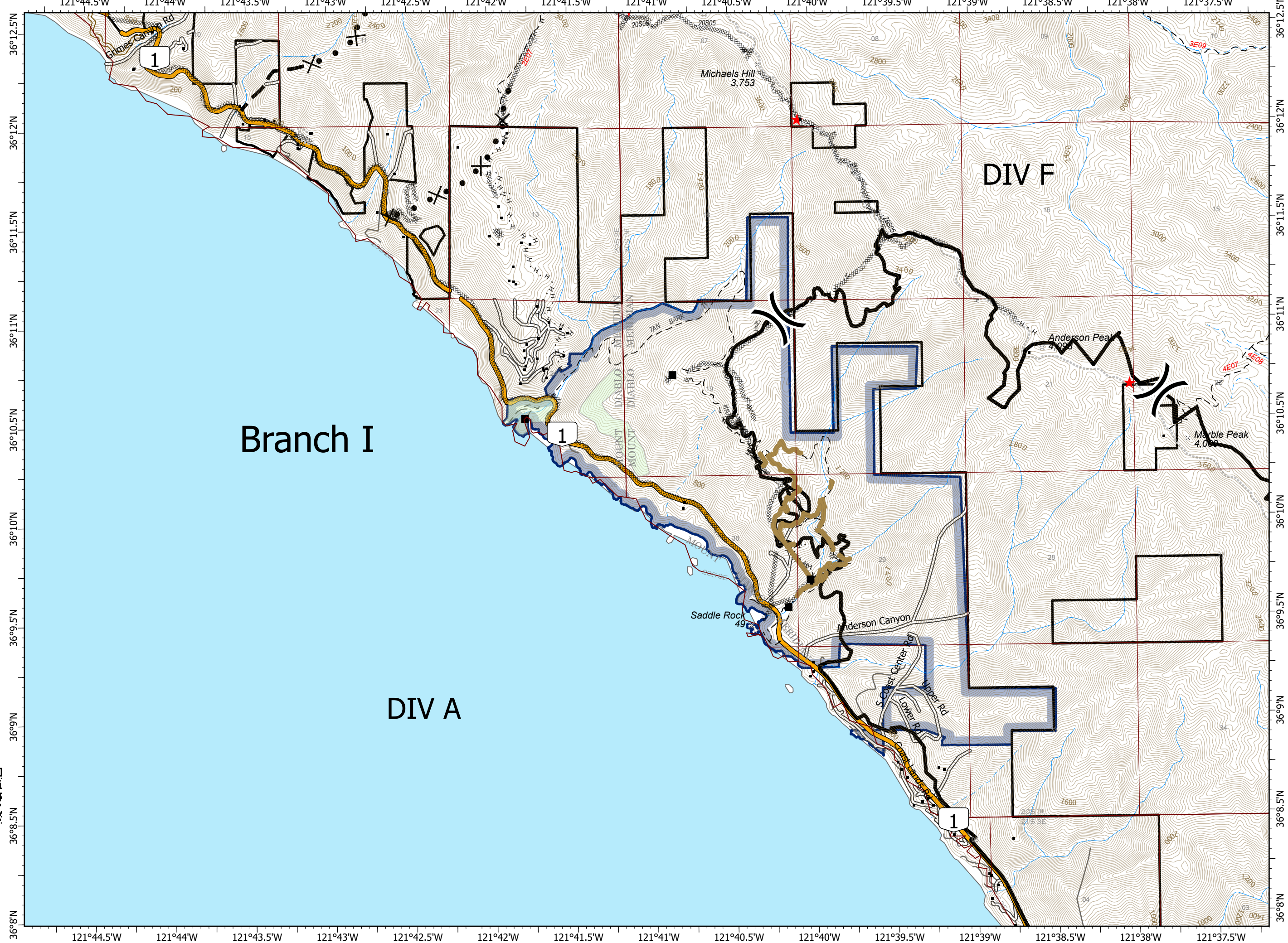
- Division Break
- Contained Line
- Completed Dozer Line
- Completed Hand Line
- Proposed Dozer Line
- Planned Fire Line
- Repair Line
- Sensitive Natural Resources
- Sensitive Historical Resources
- State Park



0 1/4 1/2 Miles

N  
W E  
S

PNW2 GISS  
 9/15/2020 2253  
 Acres from IR and field reports  
 North American 1983 Datum.  
 LatLong Grid








# IAP

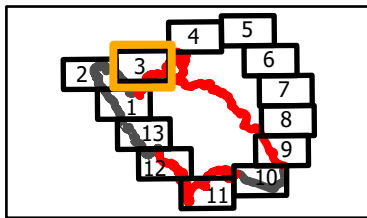
Branch I/IV-Div K/M  
Page 3 of 13

## Dolan Fire CA-LPF-002428

9/16/2020

119,448 acres at  
9/14/2020 1900 hrs

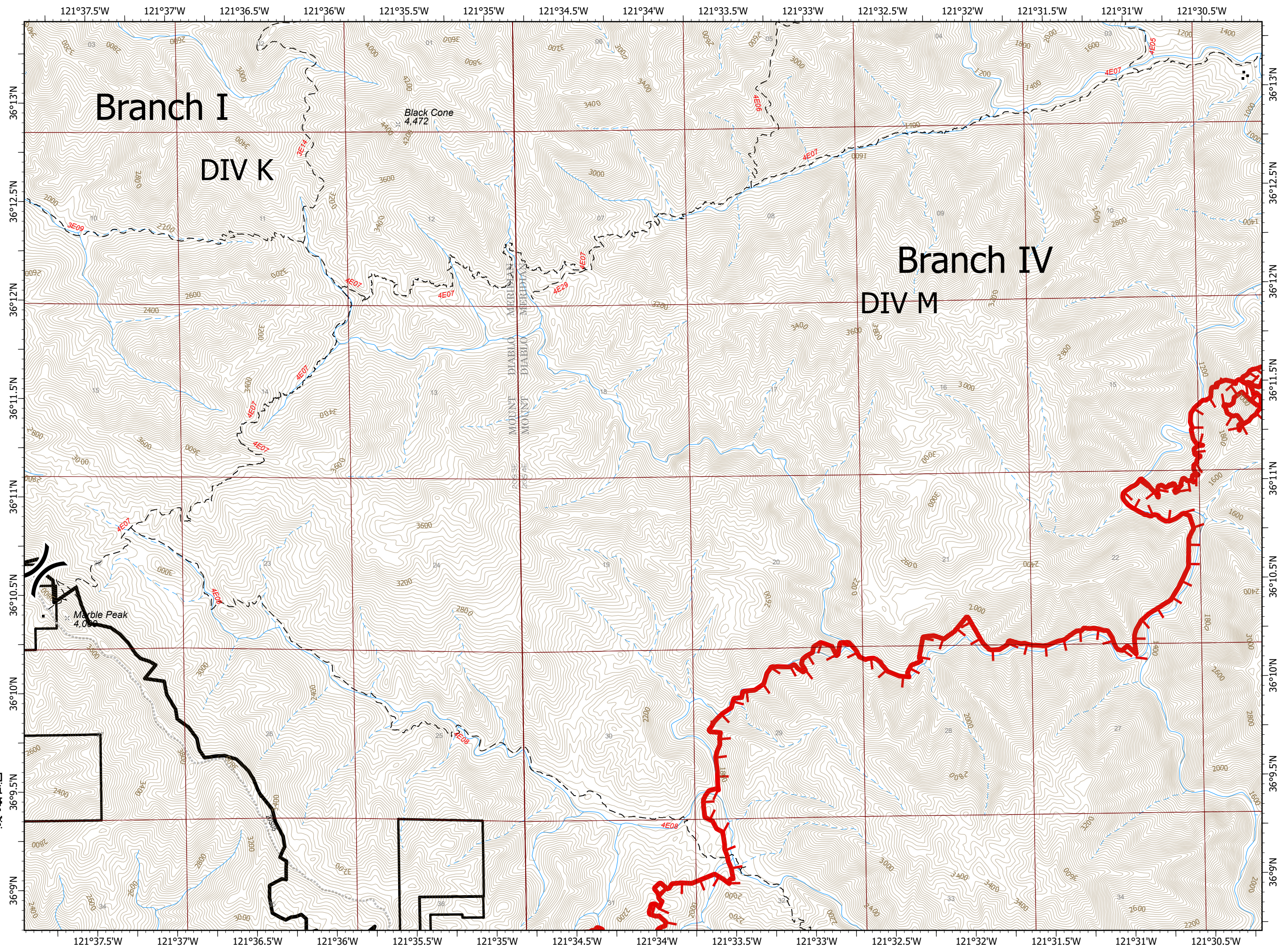
-  Division Break
-  Uncontrolled Fire Edge
-  Contained Line



0 1/4 1/2 Miles



PNW2 GISS  
9/15/2020 2253  
Acres from IR and field reports  
North American 1983 Datum.  
LatLong Grid





# IAP

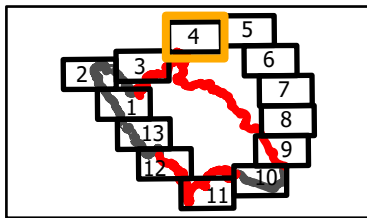
Branch IV-Div O  
Page 4 of 13

## Dolan Fire CA-LPF-002428

9/16/2020

119,448 acres at  
9/14/2020 1900 hrs

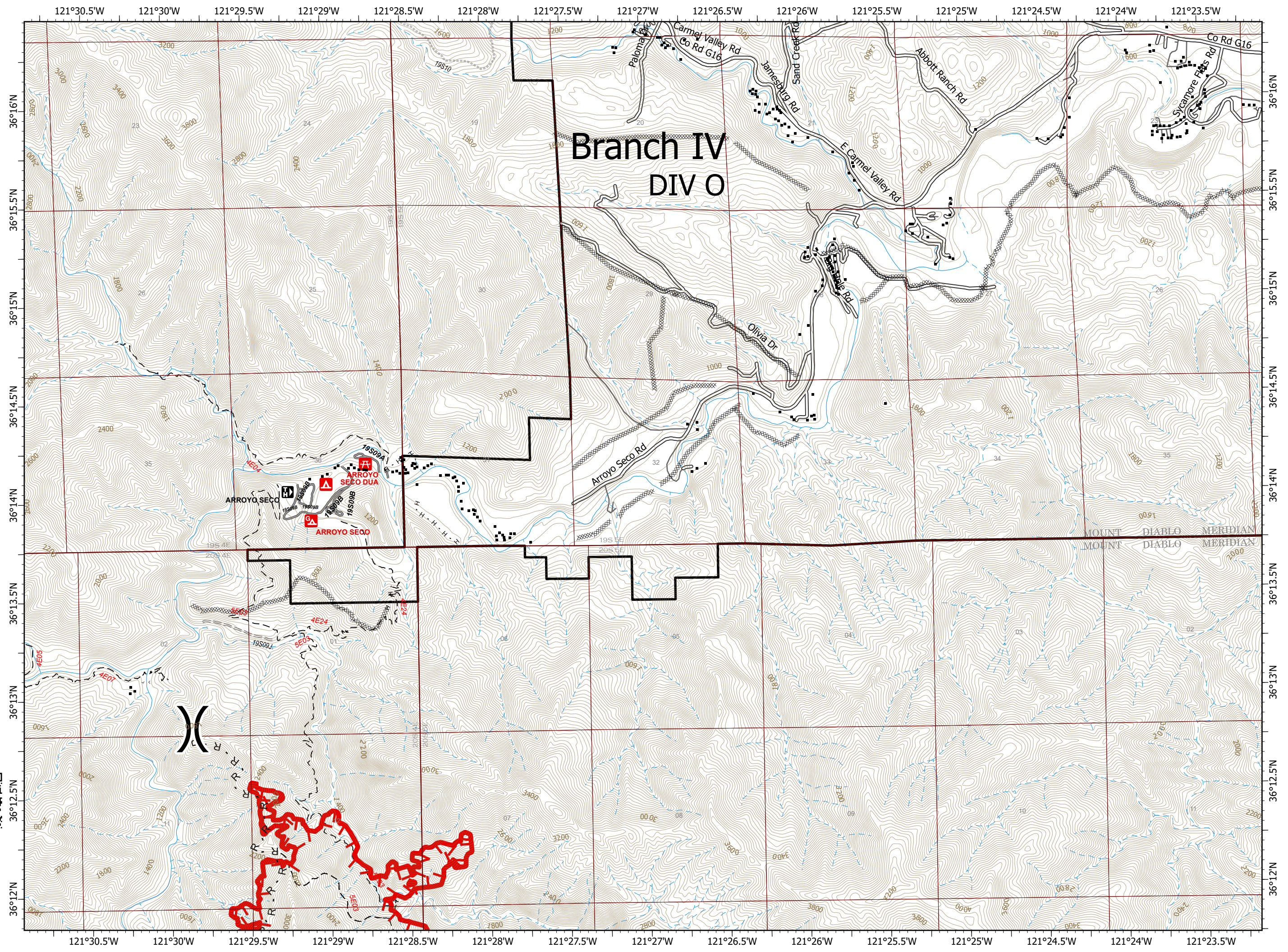
- ( ) Division Break
- Uncontrolled Fire Edge
- XXXXX Completed Dozer Line
- H · Completed Hand Line
- R Road as Completed Line



0 1/4 1/2 Miles



PNW2 GISS  
9/15/2020 2254  
Acres from IR and field reports  
North American 1983 Datum.  
LatLong Grid





# IAP

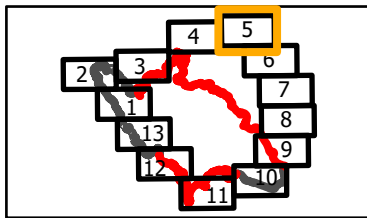
Branch IV-Div O/P  
Page 5 of 13

## Dolan Fire CA-LPF-002428

9/16/2020

119,448 acres at  
9/14/2020 1900 hrs

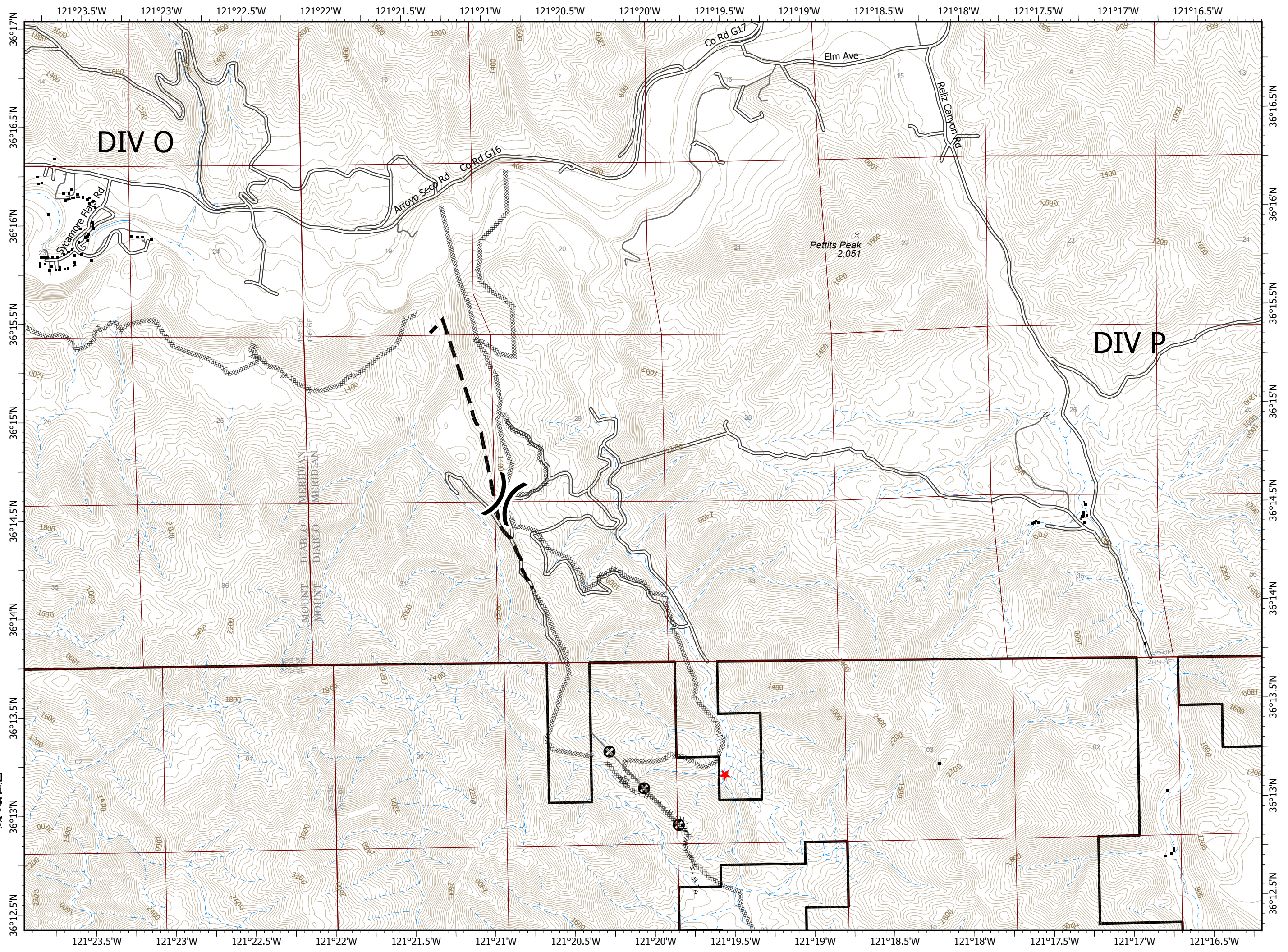
- ( ) Division Break
- xxxxx Completed Dozer Line
- H · Completed Hand Line
- ▬ Planned Fire Line
- ⊙ Other



0 1/4 1/2 Miles



PNW2 GISS  
9/15/2020 2254  
Acres from IR and field reports  
North American 1983 Datum.  
LatLong Grid





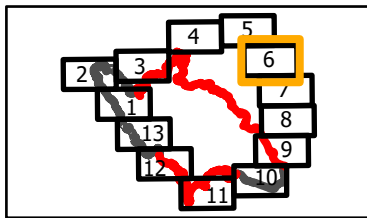
# IAP

Branch IV-Div P North  
Page 6 of 13

**Dolan Fire**  
**CA-LPF-002428**  
**9/16/2020**

119,448 acres at  
9/14/2020 1900 hrs

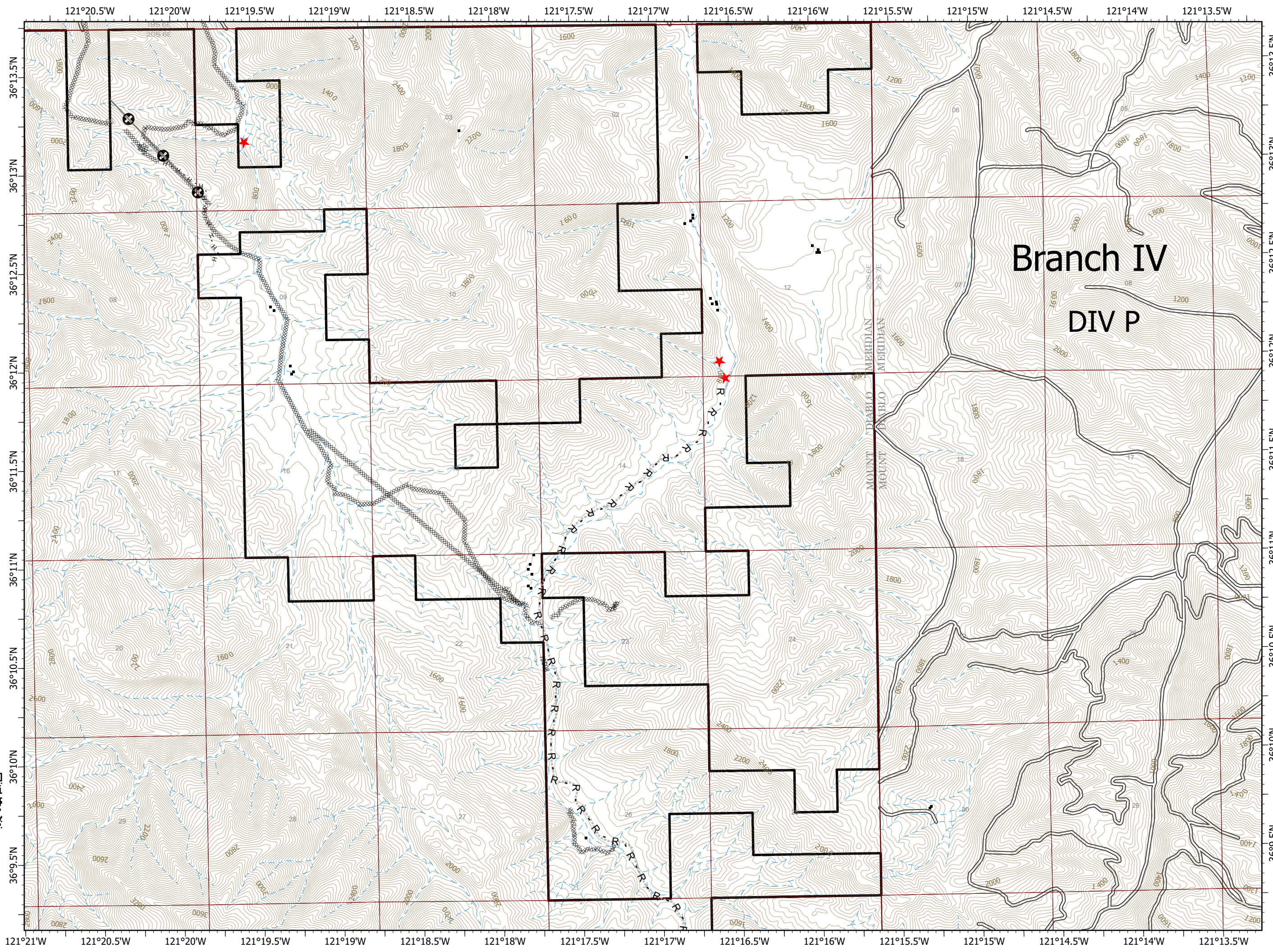
- Completed Dozer Line
- Completed Hand Line
- Road as Completed Line
- Other



0 1/4 1/2 Miles

North arrow, QR code, and logos for National Incident Teams, Forest Service, Department of Agriculture, Big Sur Fire, and CAL FIRE.

PNW2 GISS  
9/15/2020 2254  
Acres from IR and field reports  
North American 1983 Datum.  
LatLong Grid





# IAP

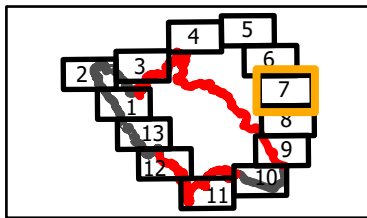
Branch IV-Div P South  
Page 7 of 13

## Dolan Fire CA-LPF-002428

9/16/2020

119,448 acres at  
9/14/2020 1900 hrs

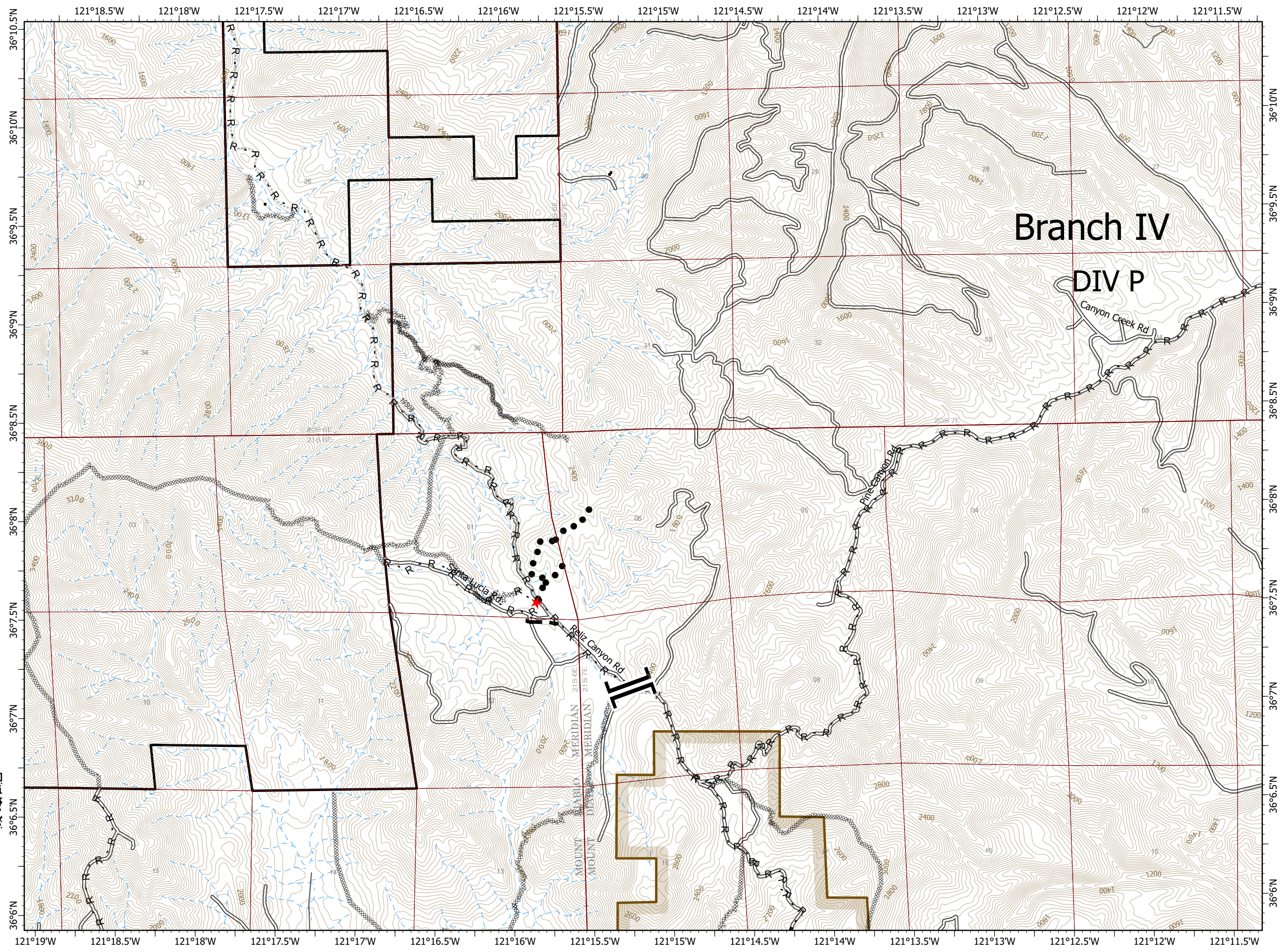
- Branch Break
- Completed Dozer Line
- Road as Completed Line
- Planned Fire Line
- Planned Secondary Line
- Fort Hunter Liggett



0 1/4 1/2 Miles



PNW2 GISS  
9/15/2020 2254  
Acres from IR and field reports  
North American 1983 Datum.  
LatLong Grid





# IAP

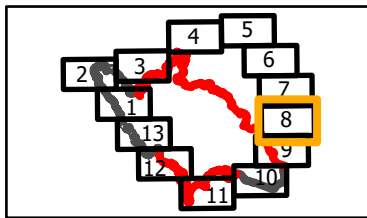
Branch V-Div R  
Page 8 of 13

## Dolan Fire CA-LPF-002428

9/16/2020

119,448 acres at  
9/14/2020 1900 hrs

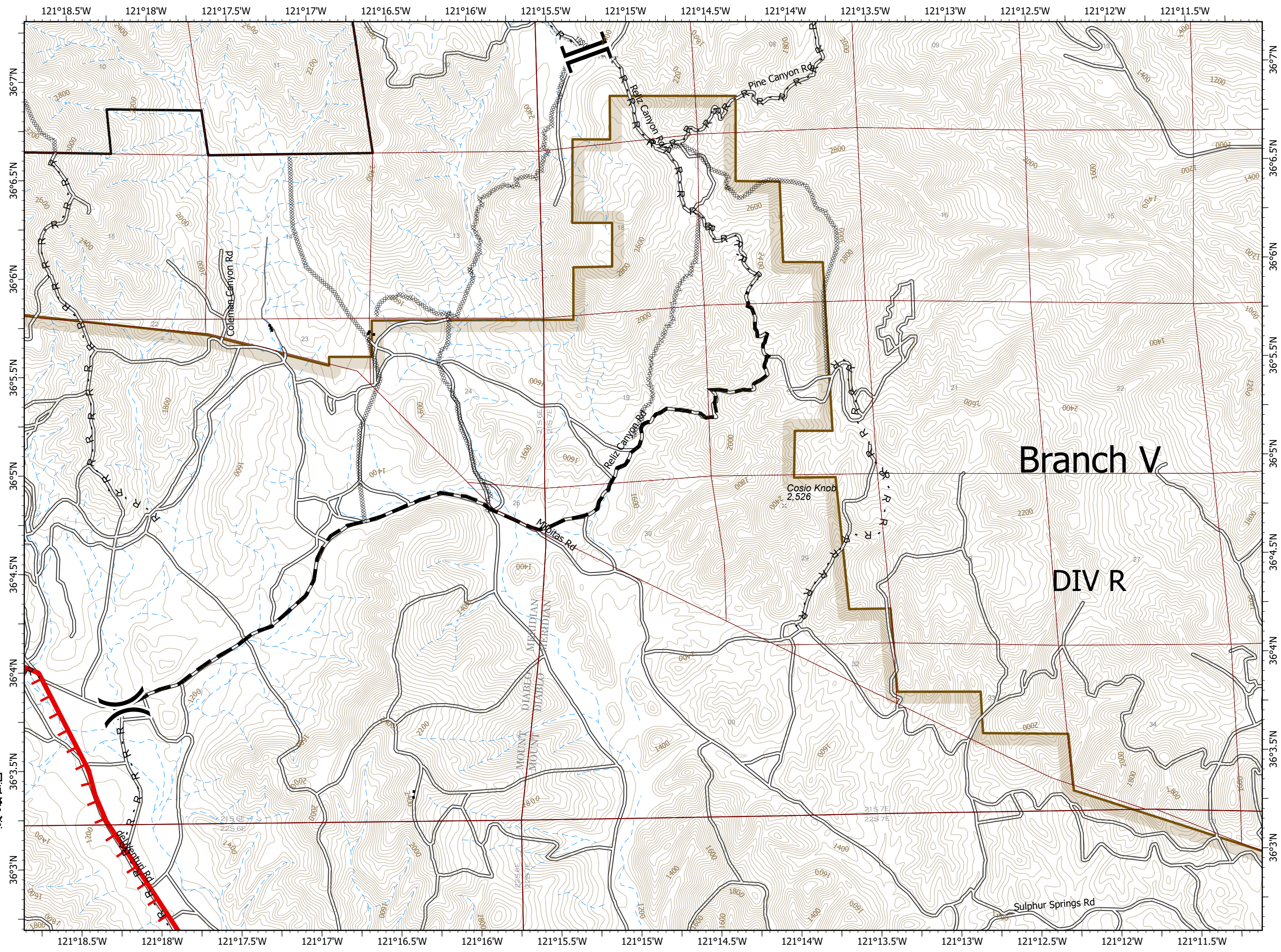
- Division Break
- Branch Break
- Uncontrolled Fire Edge
- Completed Dozer Line
- Road as Completed Line
- Planned Fire Line
- Fort Hunter Liggett



0 1/4 1/2 Miles



PNW2 GISS  
9/15/2020 2254  
Acres from IR and field reports  
North American 1983 Datum.  
LatLong Grid





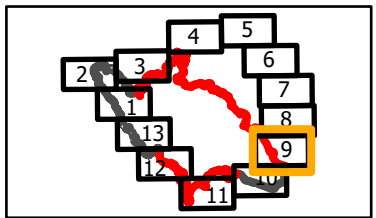
# IAP

Branch V-Div S North  
Page 9 of 13

## Dolan Fire CA-LPF-002428 9/16/2020

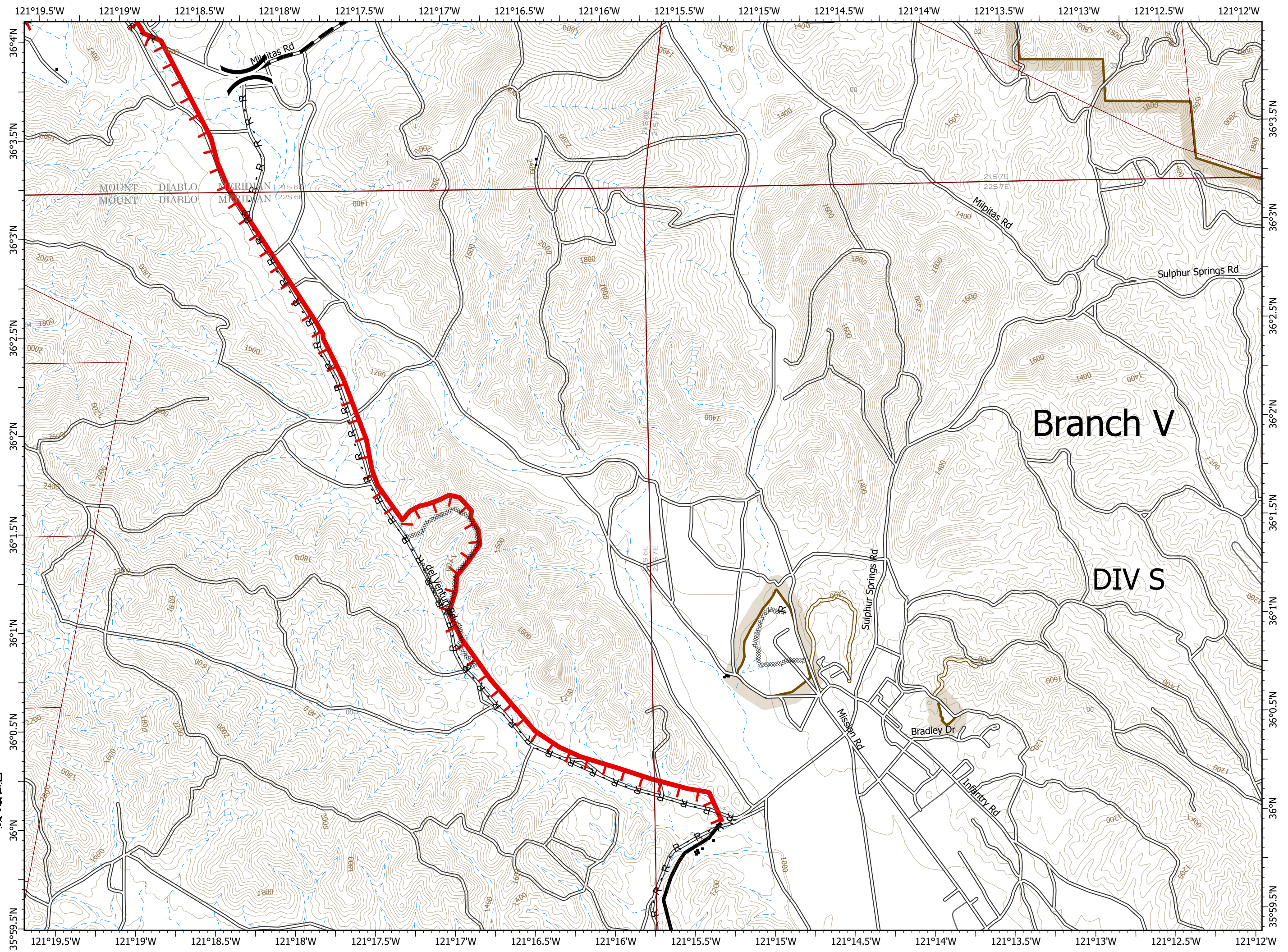
119,448 acres at  
9/14/2020 1900 hrs

- ( ) Division Break
- Uncontrolled Fire Edge
- Contained Line
- XXXX Completed Dozer Line
- R Road as Completed Line
- Planned Fire Line
- Fort Hunter Liggett



0 1/4 1/2 Miles







PNW2 GISS  
9/15/2020 2255  
Acres from IR and field reports  
North American 1983 Datum.  
Lat/Long Grid

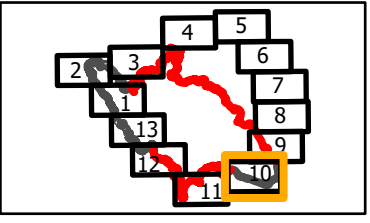




**IAP**  
 Branch V-Div S South/W East  
 Page 10 of 13

**Dolan Fire**  
 CA-LPF-002428  
 9/16/2020  
 119,448 acres at  
 9/14/2020 1900 hrs

-  Division Break
-  Uncontrolled Fire Edge
-  Contained Line
-  Completed Dozer Line
-  Road as Completed Line
-  Fort Hunter Liggett

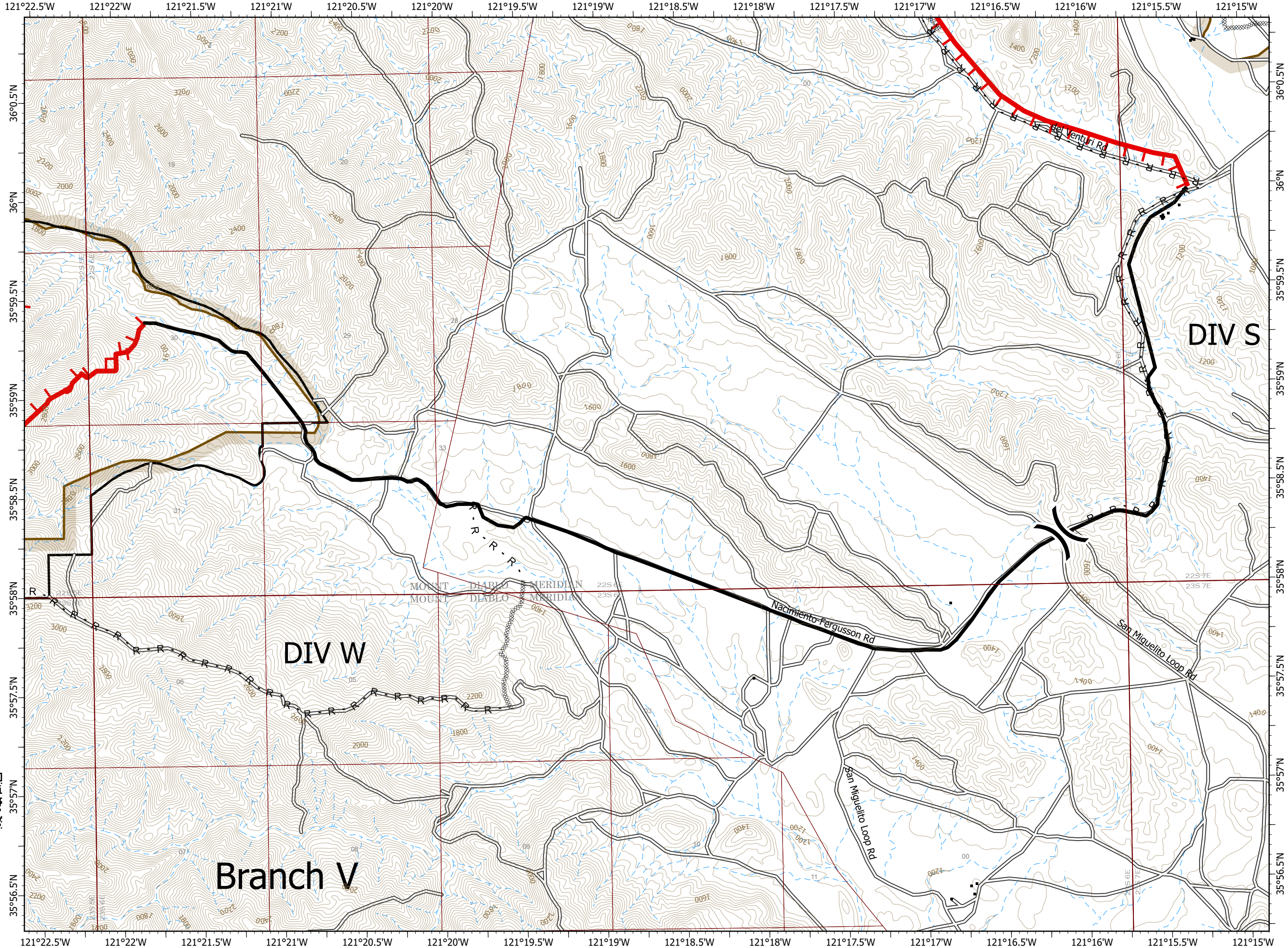


0 1/4 1/2 Miles

N  
W E  
S






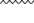




PNW2 GISS  
 9/15/2020 2255  
 Acres from IR and field reports  
 North American 1983 Datum.  
 LatLong Grid

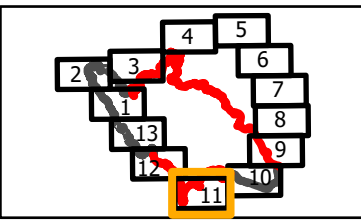




**IAP**  
 Branch V/VII-Div W West/X  
 Page 11 of 13

**Dolan Fire**  
 CA-LPF-002428  
 9/16/2020  
 119,448 acres at  
 9/14/2020 1900 hrs

-  Branch Break
-  Uncontrolled Fire Edge
-  Contained Line
-  Completed Dozer Line
-  Road as Completed Line
-  Planned Fire Line
-  Other
-  Fort Hunter Liggett

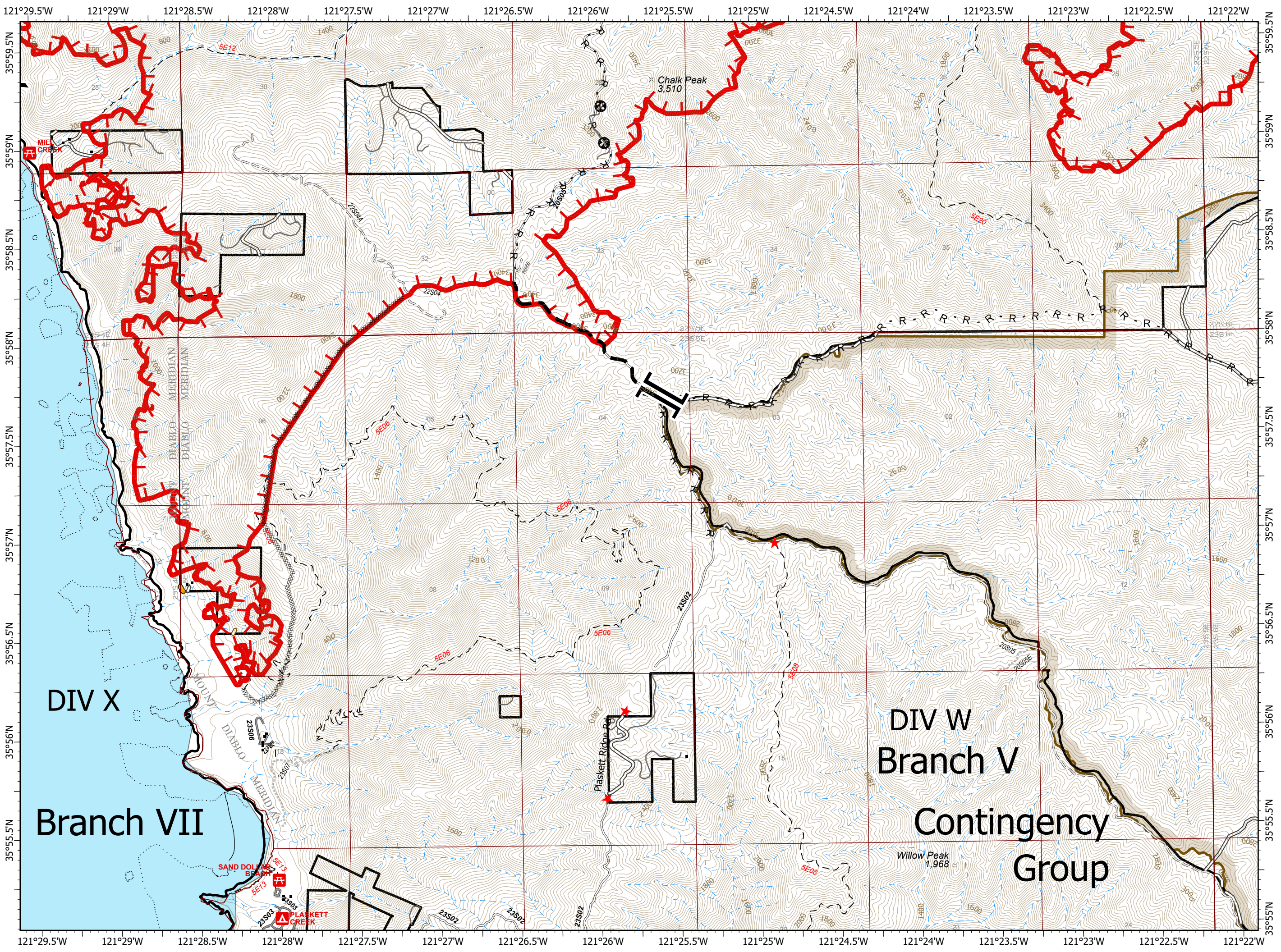


0 1/4 1/2 Miles

N  
W E  
S








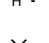



PNW2 GISS  
 9/15/2020 2255  
 Acres from IR and field reports  
 North American 1983 Datum.  
 LatLong Grid

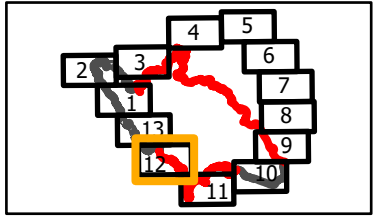




**IAP**  
 Branch I/VII-Div X/Y/Z  
 Page 12 of 13

**Dolan Fire**  
 CA-LPF-002428  
 9/16/2020  
 119,448 acres at  
 9/14/2020 1900 hrs

-  Division Break
-  Branch Break
-  Uncontrolled Fire Edge
-  Contained Line
-  Completed Dozer Line
-  Completed Hand Line
-  Proposed Dozer Line
-  Planned Secondary Line
-  State Park



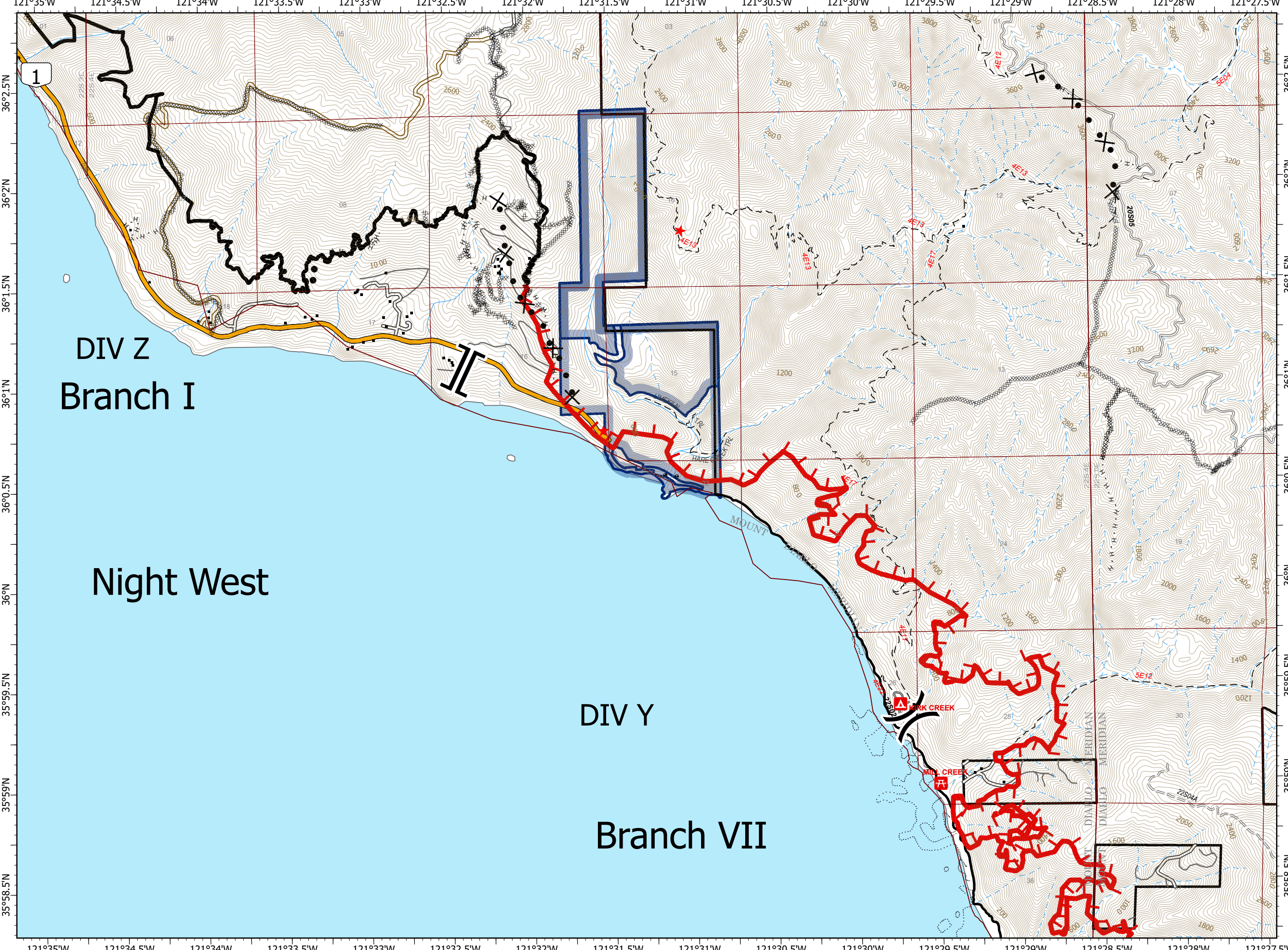
0 1/4 1/2 Miles







PNW2 GISS  
 9/15/2020 2255  
 Acres from IR and field reports  
 North American 1983 Datum.  
 Lat/Long Grid





# IAP

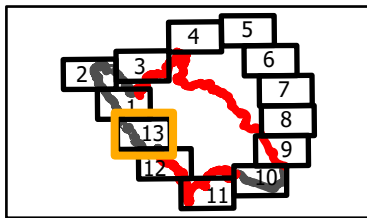
Branch VII-Div Z  
Page 13 of 13

## Dolan Fire CA-LPF-002428

9/16/2020

119,448 acres at  
9/14/2020 1900 hrs

- Uncontrolled Fire Edge
- Contained Line
- Completed Dozer Line
- Completed Hand Line
- Proposed Dozer Line
- Planned Secondary Line
- State Park



0 1/4 1/2 Miles



PNW2 GISS  
9/15/2020 2255  
Acres from IR and field reports  
North American 1983 Datum.  
LatLong Grid

