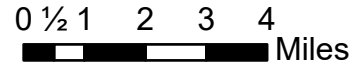


# IAP Index

Dolan Fire  
CA-LPF-002428  
9/17/2020

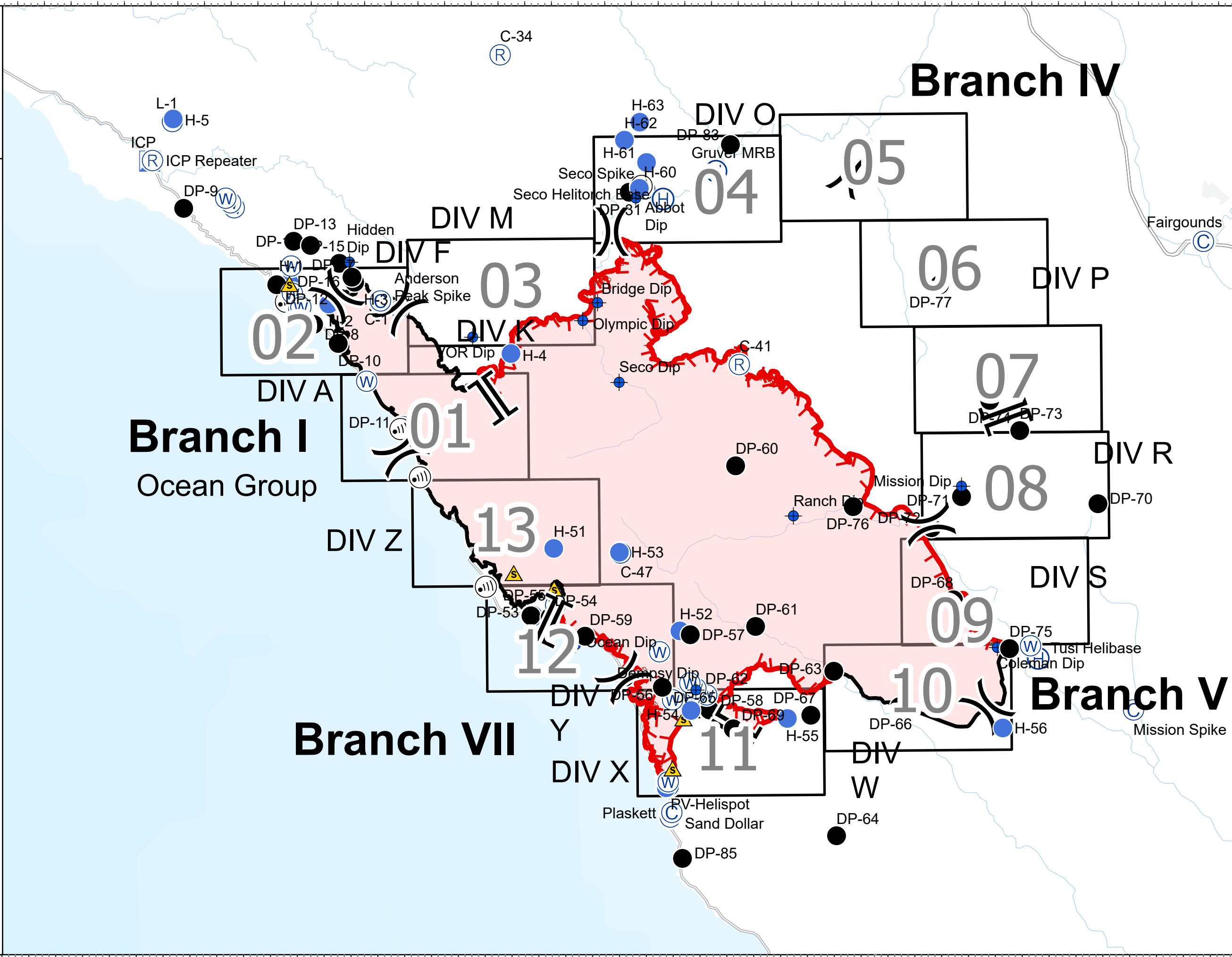
122,178 acres at 9/15/2020 1900 hrs



- IAP Map Index
- Camp
- Dip Site
- Drop Point
- Helibase
- Helispot
- Incident Command Post
- Internet Access
- Repeater
- Safety Zone
- Water Source
- Division Break
- Branch Break
- Uncontrolled Fire Edge
- Contained Line
- Wildfire Daily Fire Perimeter



PNW2 GISS  
9/16/2020 2033  
Acres from IR and field reports  
North American 1983 Datum.  
LatLong Grid



## Branch IV

## Branch I

Ocean Group

## Branch VII

## Branch V

### 02

### 01

### 03

### 12

### 13

### 04

### 11

### 05

### 06

### 07

### 08

### 09

### 10

### DIV O

### DIV M

### DIV F

### DIV A

### DIV Z

### DIV Y

### DIV X

### DIV P

### DIV R

### DIV S

### DIV W

L-1 H-5

ICP ICP Repeater

DP-13 Hidden Dip

DP-15 Anderson Peak Spike

DP-16 Anderson Peak Spike

DP-12 H-2 C-1

DP-10 H-3

DP-11 H-4

DP-13 Hidden Dip

DP-15 Anderson Peak Spike

DP-16 Anderson Peak Spike

DP-12 H-2 C-1

DP-10 H-3

DP-11 H-4

C-34

H-63 H-62

Seco Spike H-60

Seco Helitorch Edge DP-31 Abbot Dip

Bridge Dip

Olympic Dip

Seco Dip

C-41

DP-60

H-51 H-53 C-47

DP-55 DP-54

DP-53 Ocean Dip

DP-59

H-52 DP-57

DP-61

H-63 H-62

Seco Spike H-60

Seco Helitorch Edge DP-31 Abbot Dip

Bridge Dip

Olympic Dip

Seco Dip

C-41

DP-60

H-51 H-53 C-47

DP-55 DP-54

DP-53 Ocean Dip

DP-59

H-52 DP-57

DP-61

DP-83 Gruver MRB

DP-82

DP-77

DP-74 DP-73

DP-71

DP-76 DP-72

DP-68

DP-75

DP-70

DP-66

DP-64

DP-63

DP-62

DP-67

DP-69

DP-83 Gruver MRB

DP-82

DP-77

DP-74 DP-73

DP-71

DP-76 DP-72

DP-68

DP-75

DP-70

DP-66

DP-64

DP-63

DP-62

DP-67

DP-69

DP-83 Gruver MRB

DP-82

DP-77

DP-74 DP-73

DP-71

DP-76 DP-72

DP-68

DP-75

DP-70

DP-66

DP-64

DP-63

DP-62

DP-67

DP-69

Fairgrounds

Mission Dip

Mission Dip

Mission Dip

Mission Dip

Mission Dip

Mission Dip

Mission Dip

Mission Dip

Mission Dip

Mission Dip

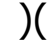
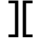


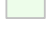


Mission Dip

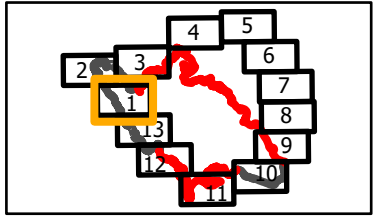
Mission Dip

Mission Dip

Mission Dip

**IAP**  
 Branch I/VII-Div A South/Z  
 North  
 Page 1 of 13  
**Dolan Fire**  
**CA-LPF-002428**  
**9/17/2020**  
 122,178 acres at  
 9/15/2020 1900 hrs

-  Division Break
-  Branch Break
-  Uncontrolled Fire Edge
-  Contained Line
-  Sensitive Natural Resources
-  Sensitive Historical Resources
-  State Park

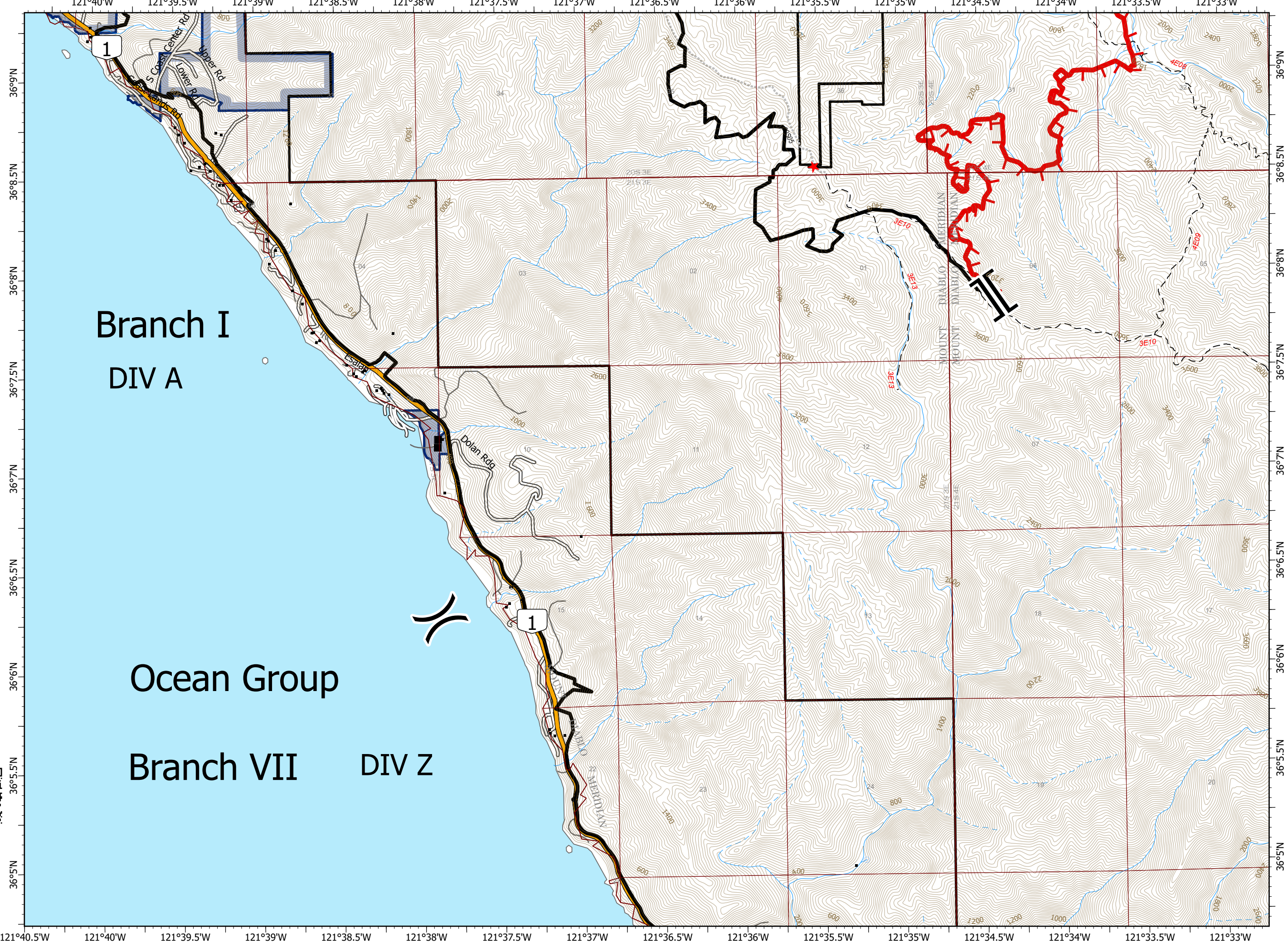


0 1/4 1/2 Miles

N  
W E  
S



PNW2 GISS  
 9/16/2020 2036  
 Acres from IR and field reports  
 North American 1983 Datum.  
 LatLong Grid



# IAP

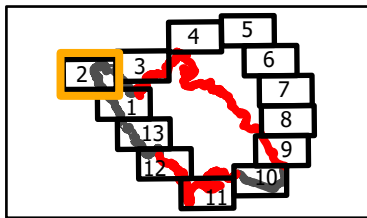
Branch I-Div A North/F  
Page 2 of 13

## Dolan Fire CA-LPF-002428

9/17/2020

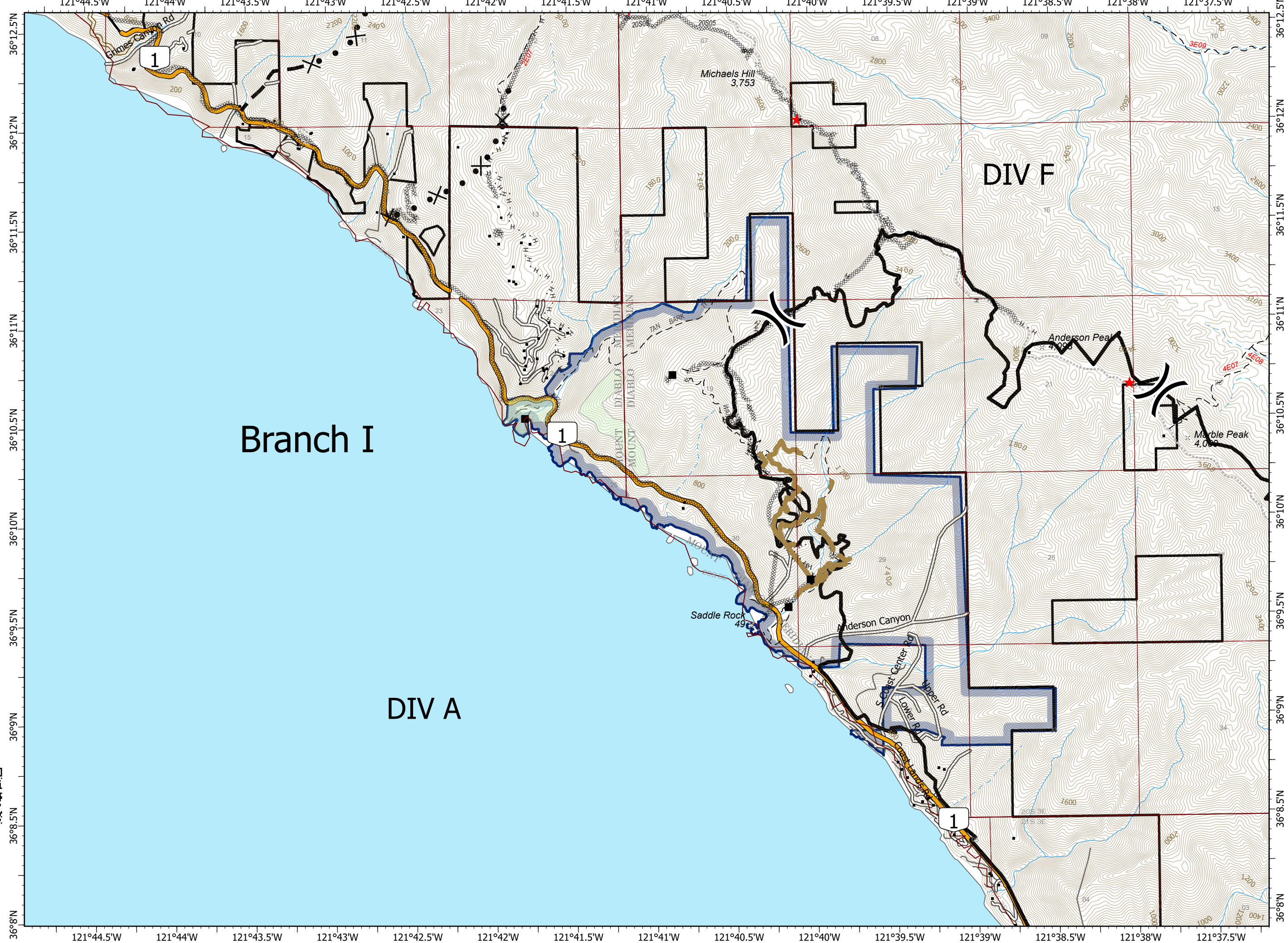
122,178 acres at  
9/15/2020 1900 hrs

- Division Break
- Contained Line
- Completed Dozer Line
- Completed Hand Line
- Proposed Dozer Line
- Planned Fire Line
- Repair Line
- Sensitive Natural Resources
- Sensitive Historical Resources
- State Park



0 1/4 1/2 Miles

PNW2 GISS  
9/16/2020 2036  
Acres from IR and field reports  
North American 1983 Datum.  
LatLong Grid



# IAP

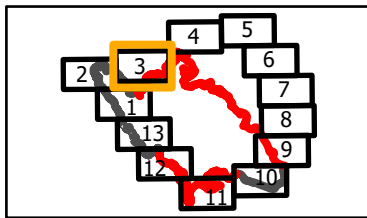
Branch I/IV-Div K/M  
Page 3 of 13

## Dolan Fire CA-LPF-002428

9/17/2020

122,178 acres at  
9/15/2020 1900 hrs

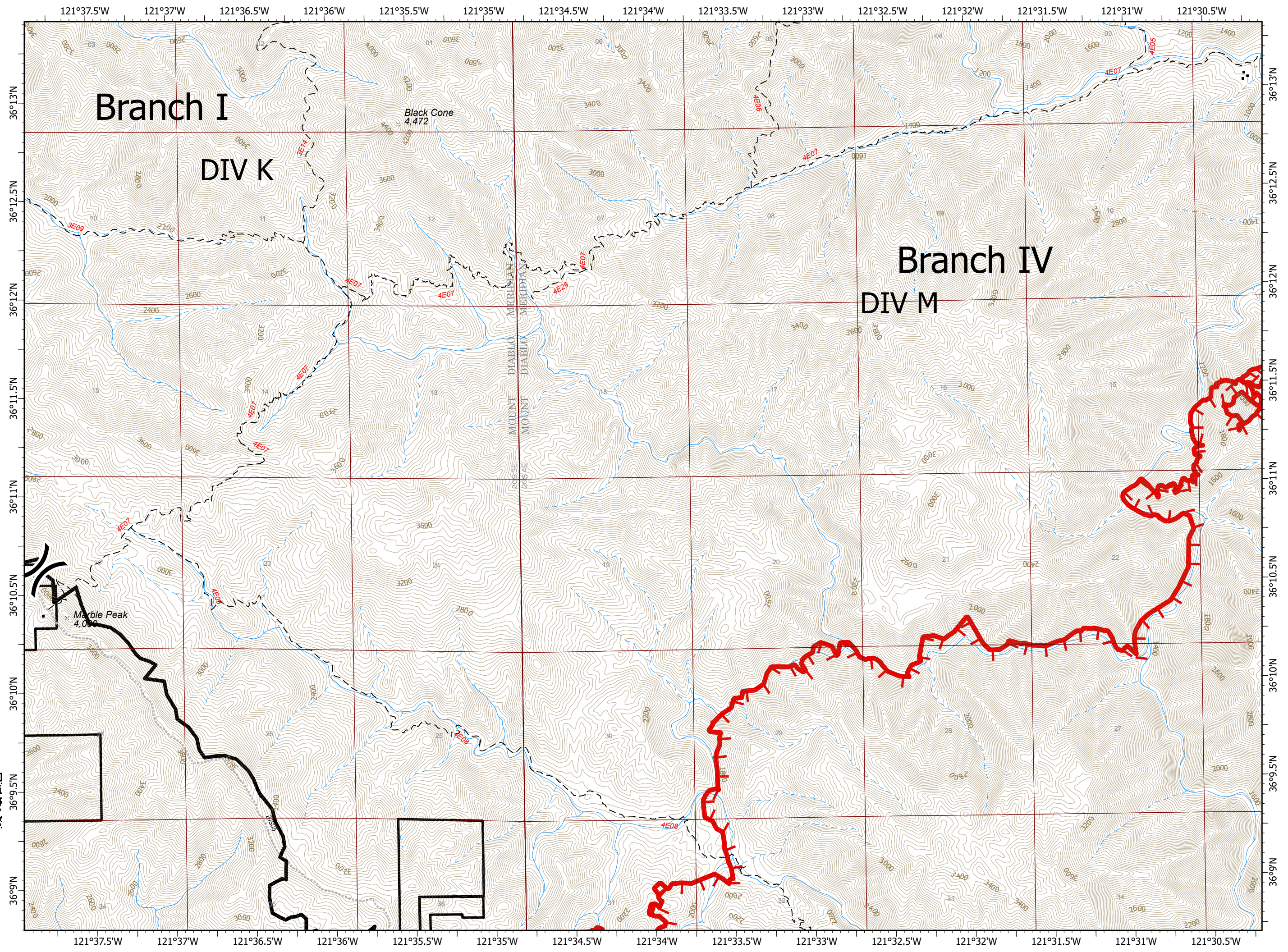
- ( ) Division Break
- Uncontrolled Fire Edge
- Contained Line



0 1/4 1/2 Miles



PNW2 GISS  
9/16/2020 2036  
Acres from IR and field reports  
North American 1983 Datum.  
LatLong Grid



# IAP

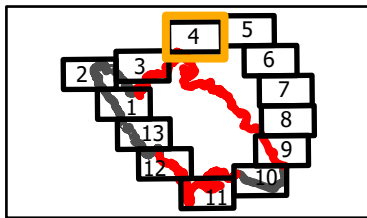
Branch IV-Div O  
Page 4 of 13

## Dolan Fire CA-LPF-002428

9/17/2020

122,178 acres at  
9/15/2020 1900 hrs

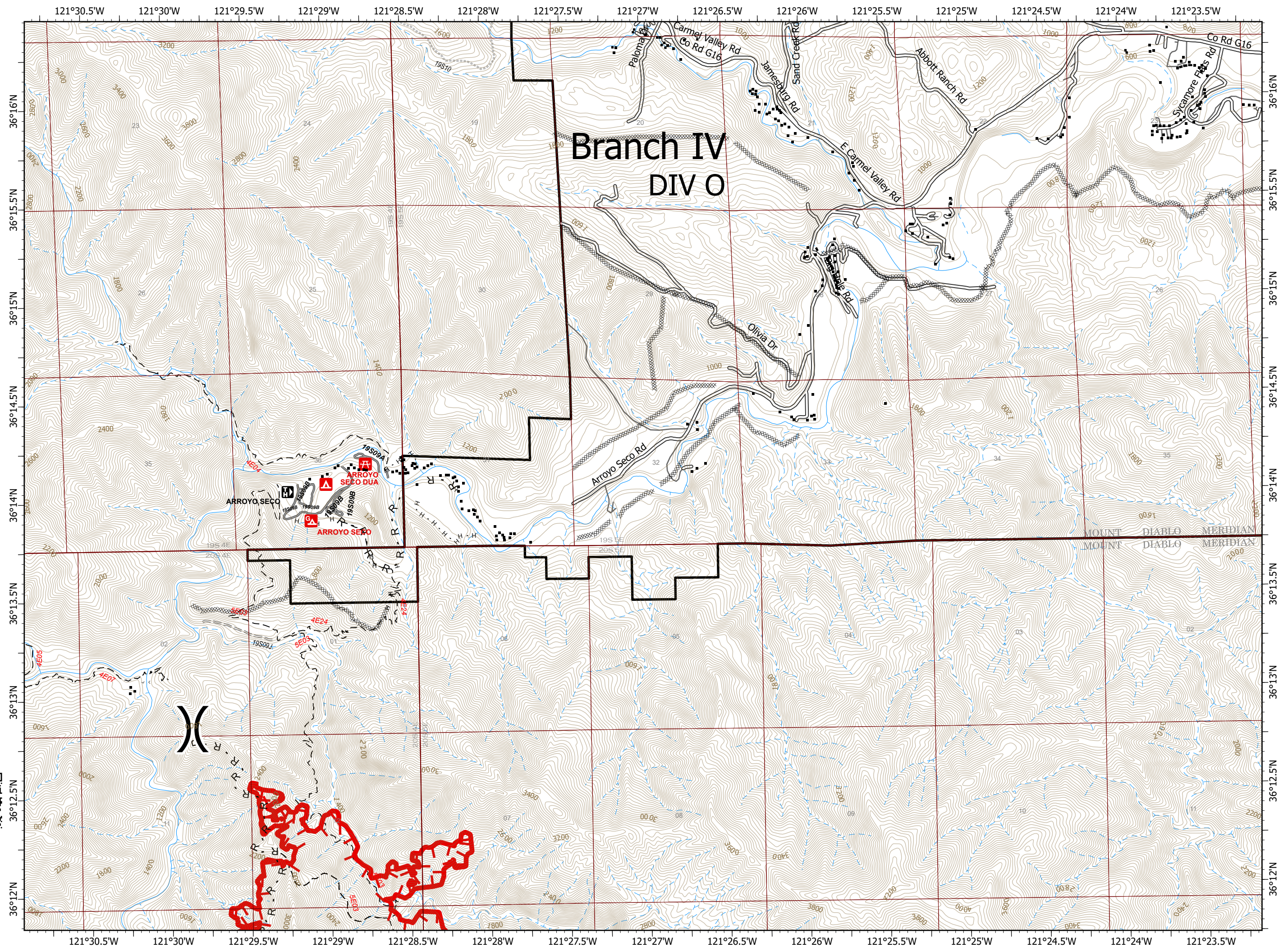
- ( ) Division Break
- Uncontrolled Fire Edge
- XXXXX Completed Dozer Line
- H · Completed Hand Line
- R Road as Completed Line



0 1/4 1/2 Miles



PNW2 GISS  
9/16/2020 2037  
Acres from IR and field reports  
North American 1983 Datum.  
LatLong Grid



# Branch IV DIV O

# IAP

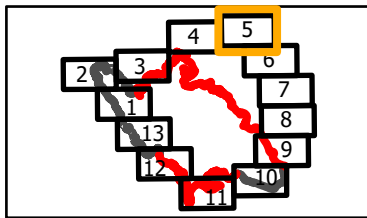
Branch IV-Div O/P  
Page 5 of 13

## Dolan Fire CA-LPF-002428

9/17/2020

122,178 acres at  
9/15/2020 1900 hrs

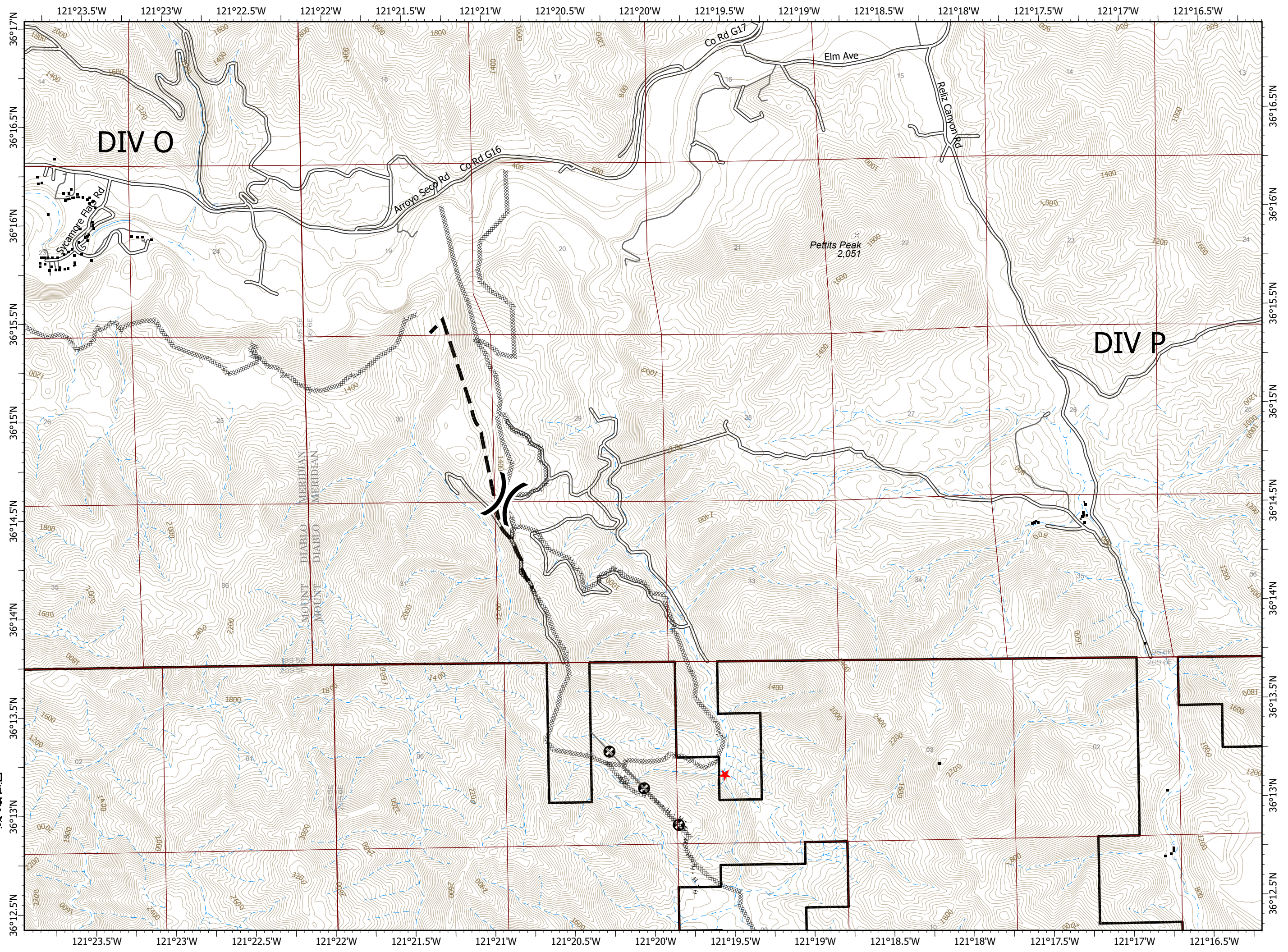
- ( ) Division Break
- xxxxx Completed Dozer Line
- H · Completed Hand Line
- ▬ Planned Fire Line
- ⊙ Other



0 1/4 1/2 Miles



PNW2 GISS  
9/16/2020 2037  
Acres from IR and field reports  
North American 1983 Datum.  
LatLong Grid



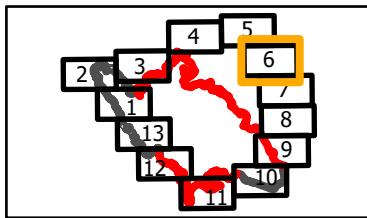
# IAP

Branch IV-Div P North  
Page 6 of 13

**Dolan Fire**  
**CA-LPF-002428**  
**9/17/2020**

122,178 acres at  
9/15/2020 1900 hrs

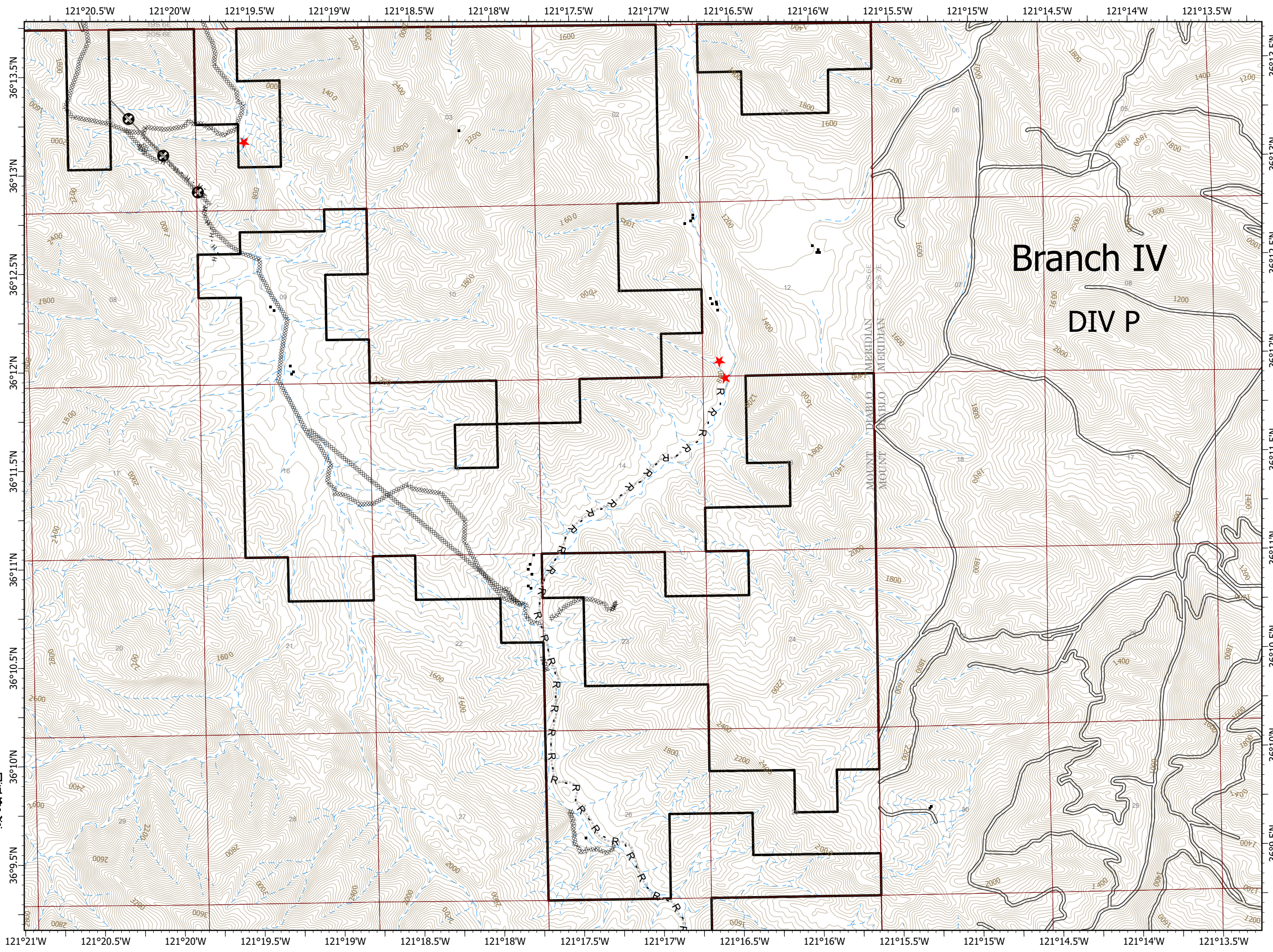
- Completed Dozer Line
- Completed Hand Line
- Road as Completed Line
- Other



0 1/4 1/2 Miles



PNW2 GISS  
9/16/2020 2037  
Acres from IR and field reports  
North American 1983 Datum.  
LatLong Grid



**Branch IV**  
**DIV P**

# IAP

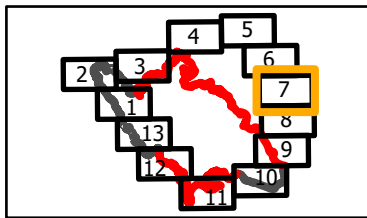
Branch IV-Div P South  
Page 7 of 13

## Dolan Fire CA-LPF-002428

9/17/2020

122,178 acres at  
9/15/2020 1900 hrs

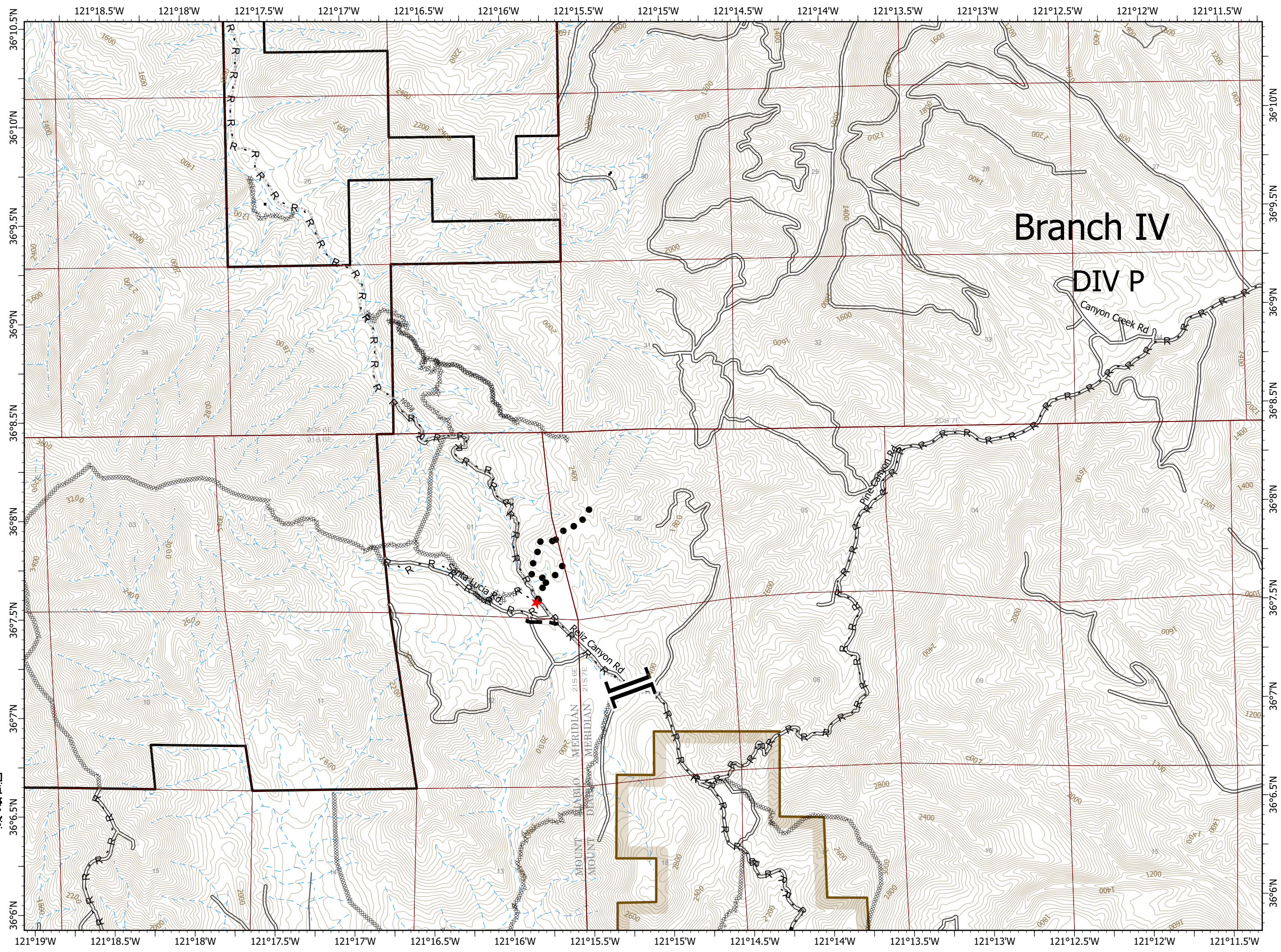
- Branch Break
- Completed Dozer Line
- Road as Completed Line
- Planned Fire Line
- Planned Secondary Line
- Fort Hunter Liggett



0 1/4 1/2 Miles



PNW2 GISS  
9/16/2020 2037  
Acres from IR and field reports  
North American 1983 Datum.  
LatLong Grid





# IAP

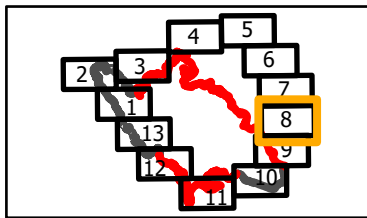
Branch V-Div R  
Page 8 of 13

## Dolan Fire CA-LPF-002428

9/17/2020

122,178 acres at  
9/15/2020 1900 hrs

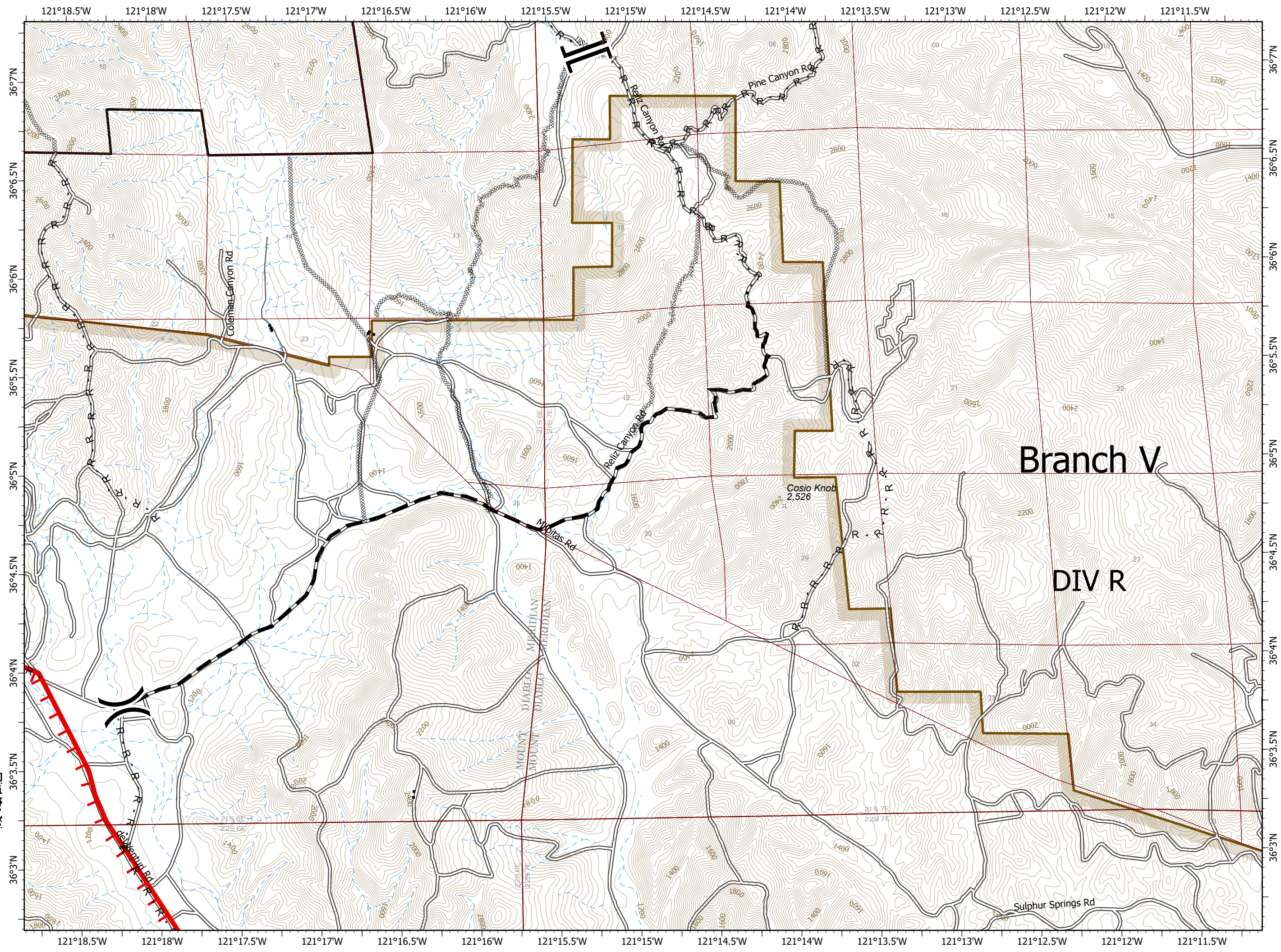
- Division Break
- Branch Break
- Uncontrolled Fire Edge
- Completed Dozer Line
- Road as Completed Line
- Planned Fire Line
- Fort Hunter Liggett



0 1/4 1/2 Miles



PNW2 GISS  
9/16/2020 2037  
Acres from IR and field reports  
North American 1983 Datum.  
LatLong Grid



Branch V

DIV R

Sulphur Springs Rd

Cosio Knob  
2,526

Coleman Canyon Rd

Reliz Canyon Rd

Pine Canyon Rd

DeVethli Rd

MOON MOUNTAIN  
DIABLO MOUNTAIN  
DIABLO MOUNTAIN

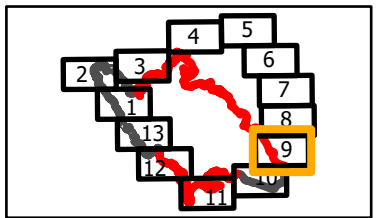
# IAP

Branch V-Div S North  
Page 9 of 13

## Dolan Fire CA-LPF-002428 9/17/2020

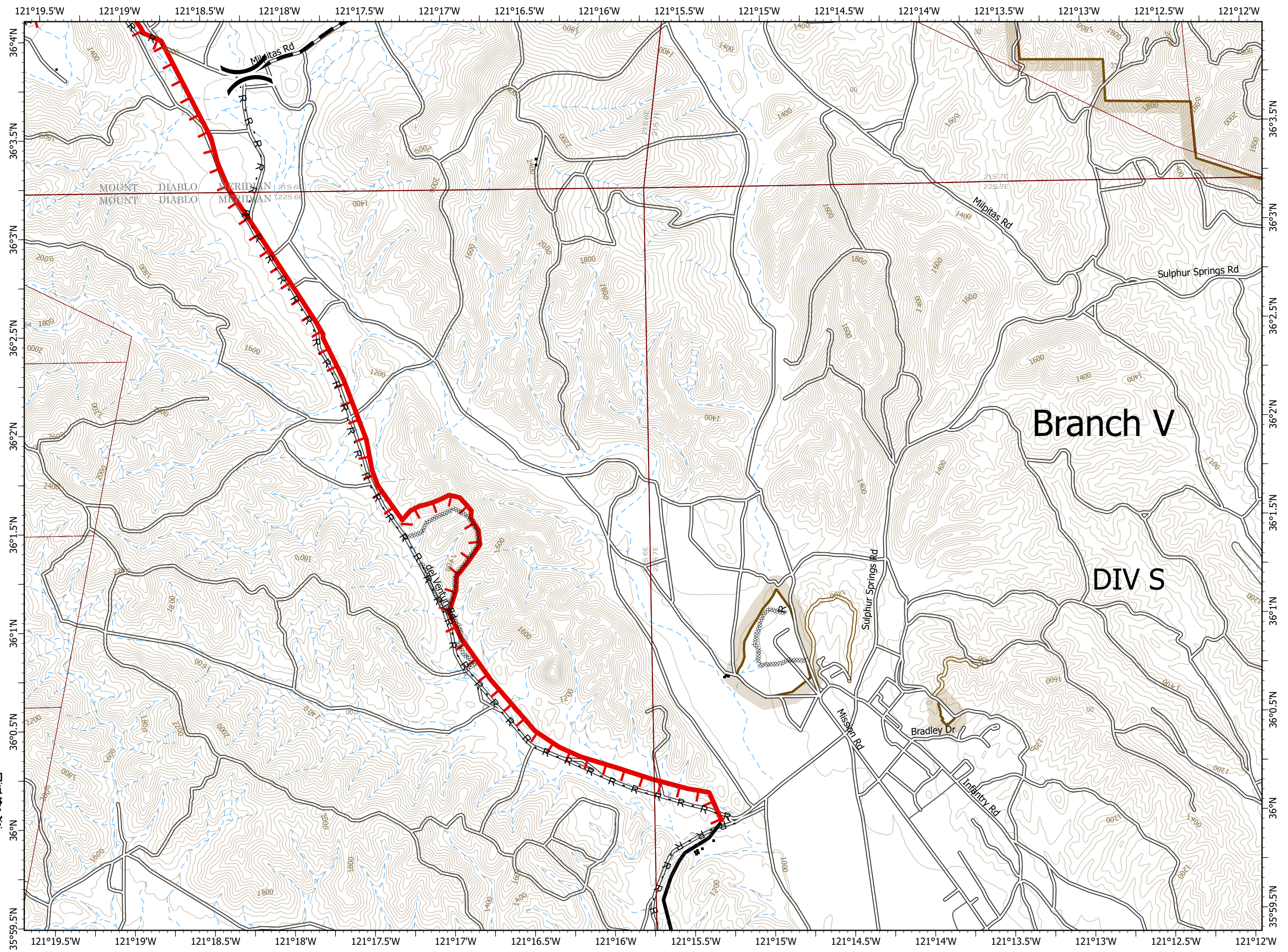
122,178 acres at  
9/15/2020 1900 hrs

- ( ) Division Break
- Uncontrolled Fire Edge
- Contained Line
- ⊗ Completed Dozer Line
- R Road as Completed Line
- Planned Fire Line
- ▭ Fort Hunter Liggett









0 1/4 1/2 Miles

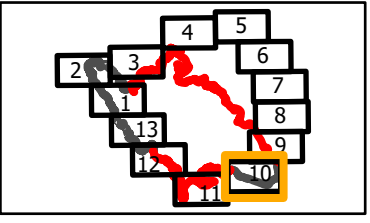
PNW2 GISS  
9/16/2020 2038  
Acres from IR and field reports  
North American 1983 Datum.  
Lat/Long Grid



**IAP**  
 Branch V-Div S South/W East  
 Page 10 of 13

**Dolan Fire**  
 CA-LPF-002428  
 9/17/2020  
 122,178 acres at  
 9/15/2020 1900 hrs

-  Division Break
-  Uncontrolled Fire Edge
-  Contained Line
-  Completed Dozer Line
-  Road as Completed Line
-  Fort Hunter Liggett

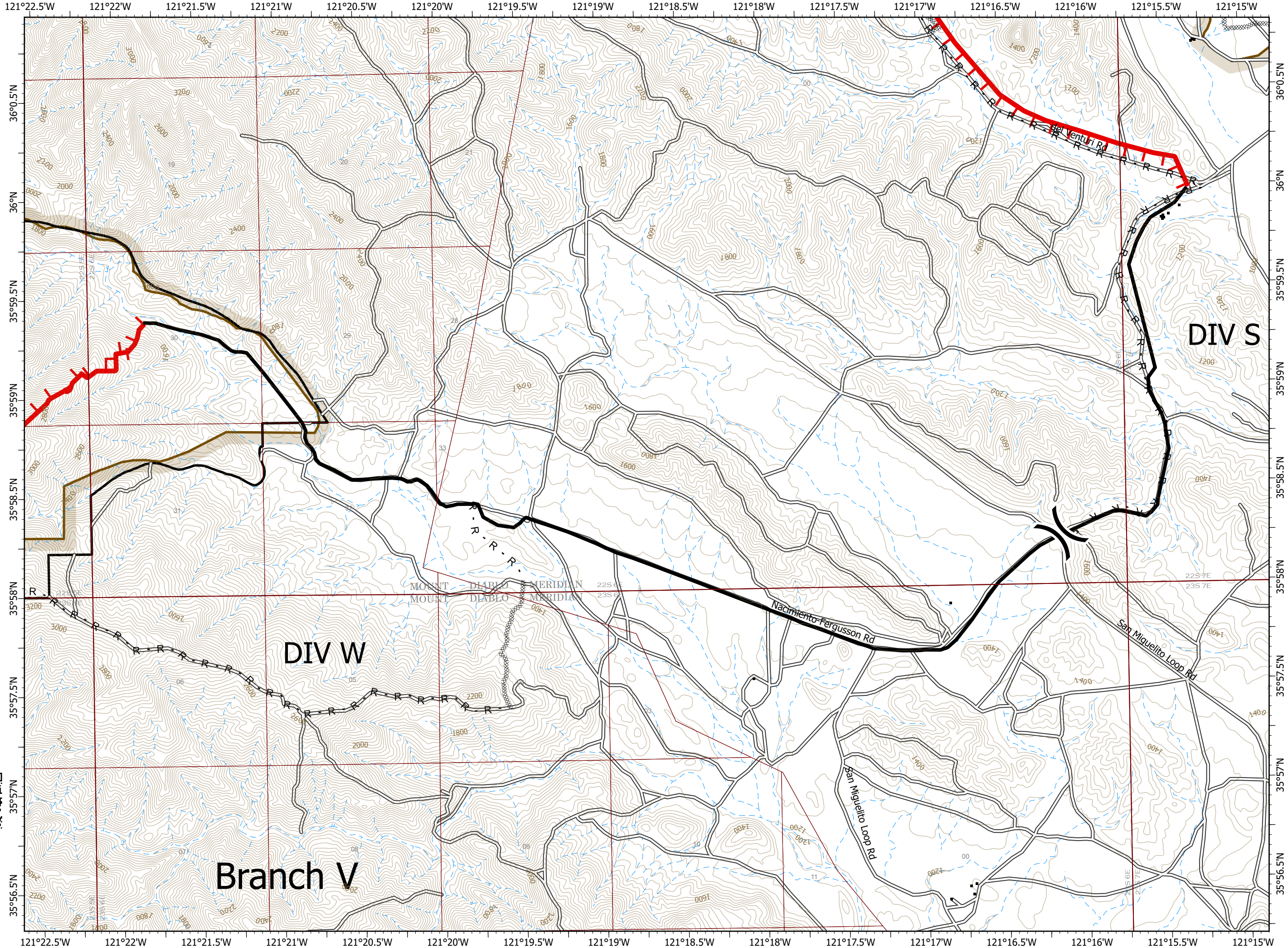


0 1/4 1/2 Miles

N  
W E  
S







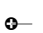



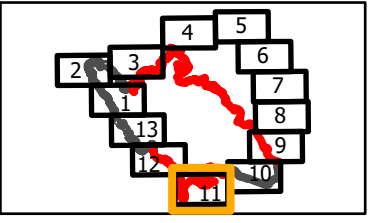
PNW2 GISS  
 9/16/2020 2038  
 Acres from IR and field reports  
 North American 1983 Datum.  
 LatLong Grid



**IAP**  
 Branch V/VII-Div W West/X  
 Page 11 of 13

**Dolan Fire**  
 CA-LPF-002428  
 9/17/2020  
 122,178 acres at  
 9/15/2020 1900 hrs

-  Branch Break
-  Uncontrolled Fire Edge
-  Contained Line
-  Completed Dozer Line
-  Road as Completed Line
-  Planned Fire Line
-  Other
-  Fort Hunter Liggett

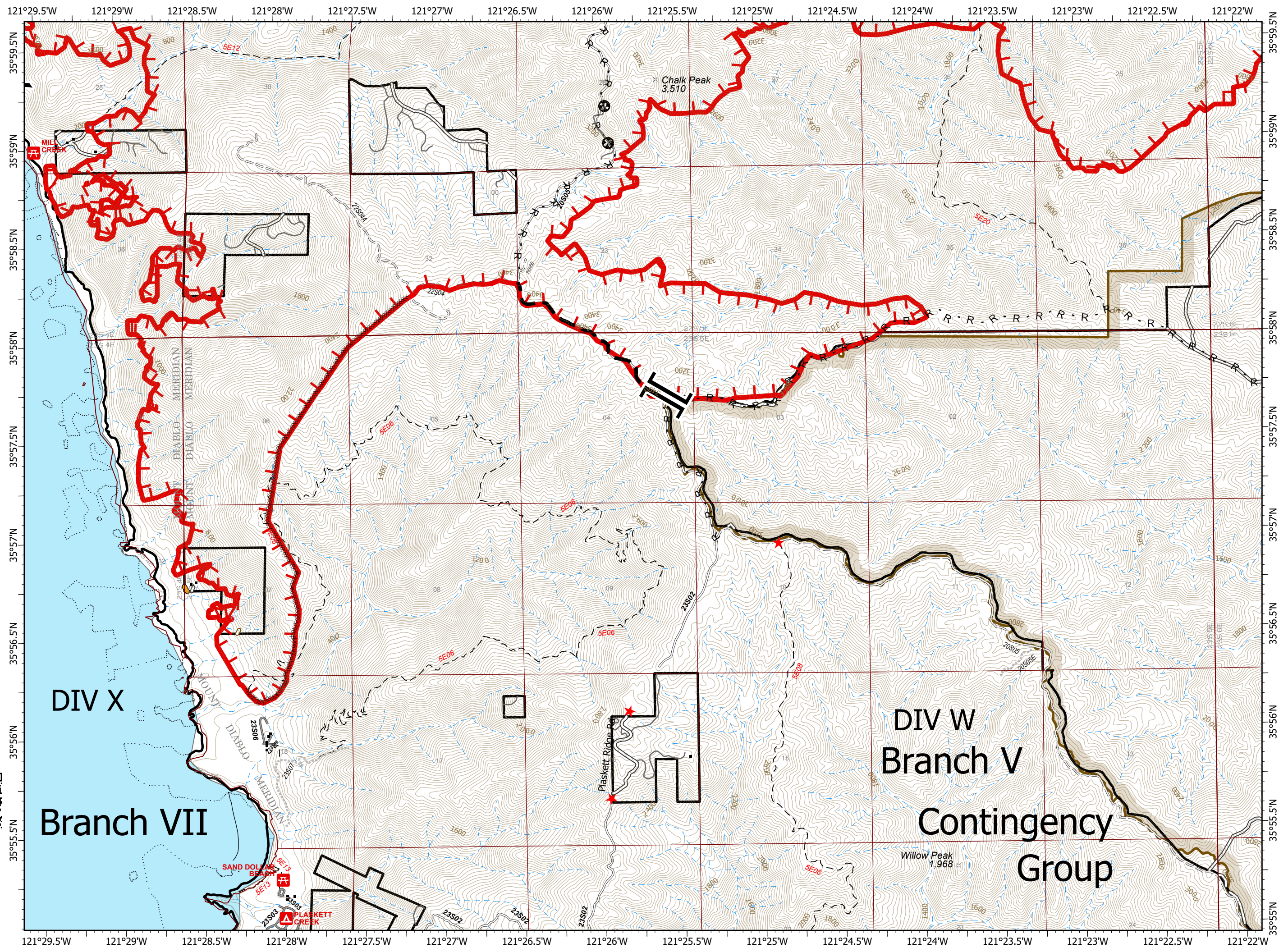


0 1/4 1/2 Miles

N  
W E  
S



PNW2 GISS  
 9/16/2020 2038  
 Acres from IR and field reports  
 North American 1983 Datum.  
 LatLong Grid



DIV X










Branch VII

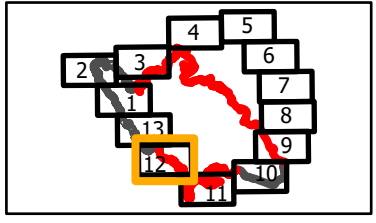
DIV W  
 Branch V

Contingency  
 Group

**IAP**  
 Branch I/VII-Div X/Y/Z  
 Page 12 of 13

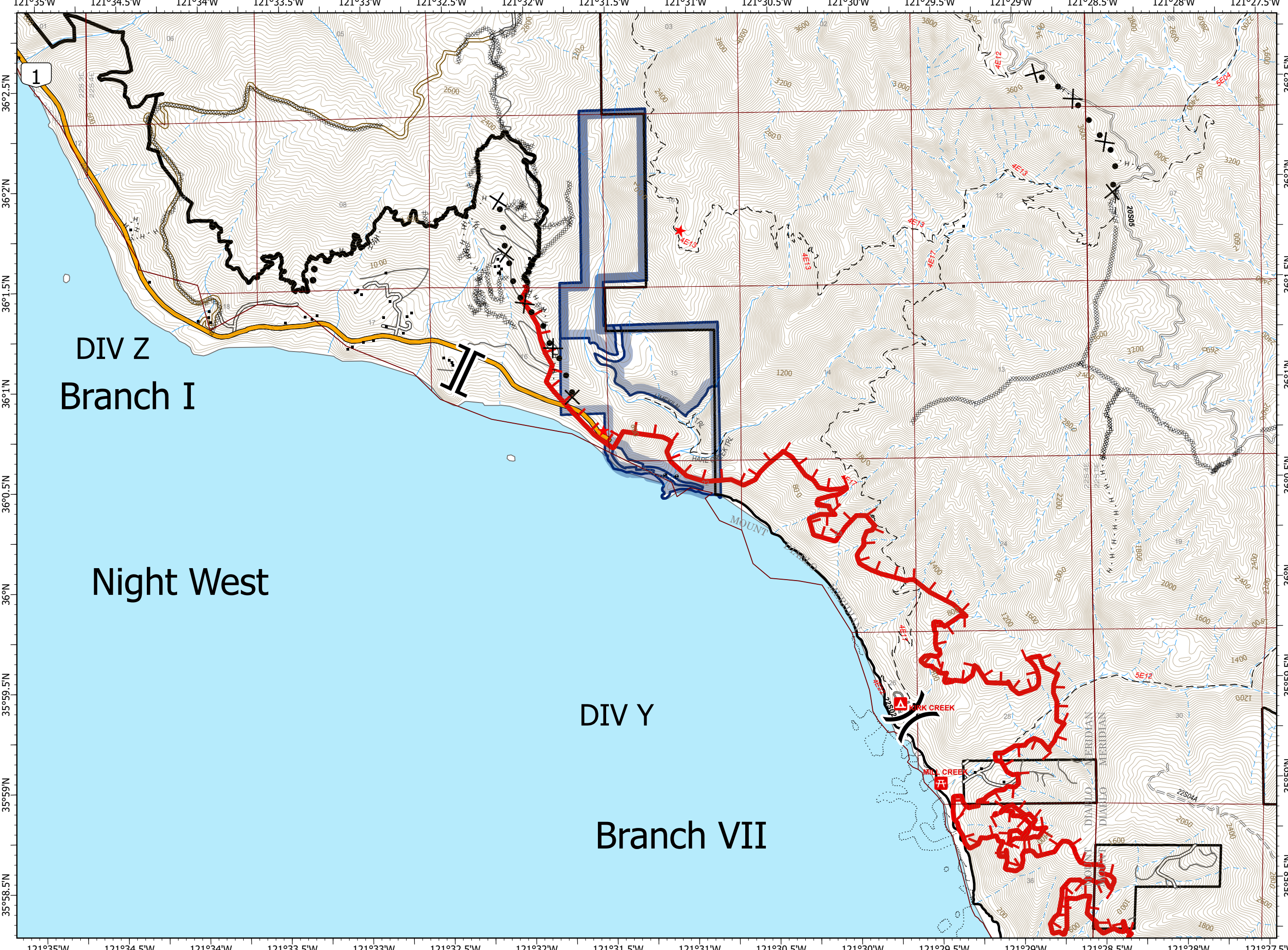
**Dolan Fire**  
 CA-LPF-002428  
 9/17/2020  
 122,178 acres at  
 9/15/2020 1900 hrs

-  Division Break
-  Branch Break
-  Uncontrolled Fire Edge
-  Contained Line
-  Completed Dozer Line
-  Completed Hand Line
-  Proposed Dozer Line
-  Planned Secondary Line
-  State Park






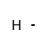



0 1/4 1/2 Miles

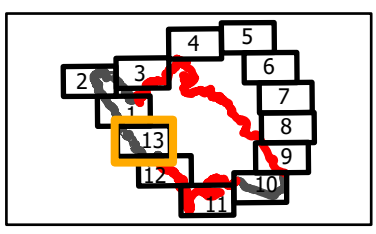
PNW2 GISS  
 9/16/2020 2038  
 Acres from IR and field reports  
 North American 1983 Datum.  
 LatLong Grid



**IAP**  
 Branch VII-Div Z  
 Page 13 of 13

**Dolan Fire**  
 CA-LPF-002428  
 9/17/2020  
 122,178 acres at  
 9/15/2020 1900 hrs

-  Uncontrolled Fire Edge
-  Contained Line
-  Completed Dozer Line
-  Completed Hand Line
-  Proposed Dozer Line
-  Planned Secondary Line
-  State Park



0 1/4 1/2 Miles

PNW2 GISS  
 9/16/2020 2038  
 Acres from IR and field reports  
 North American 1983 Datum.  
 LatLong Grid

