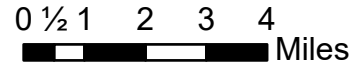


IAP Index

Dolan Fire
CA-LPF-002428
9/20/2020

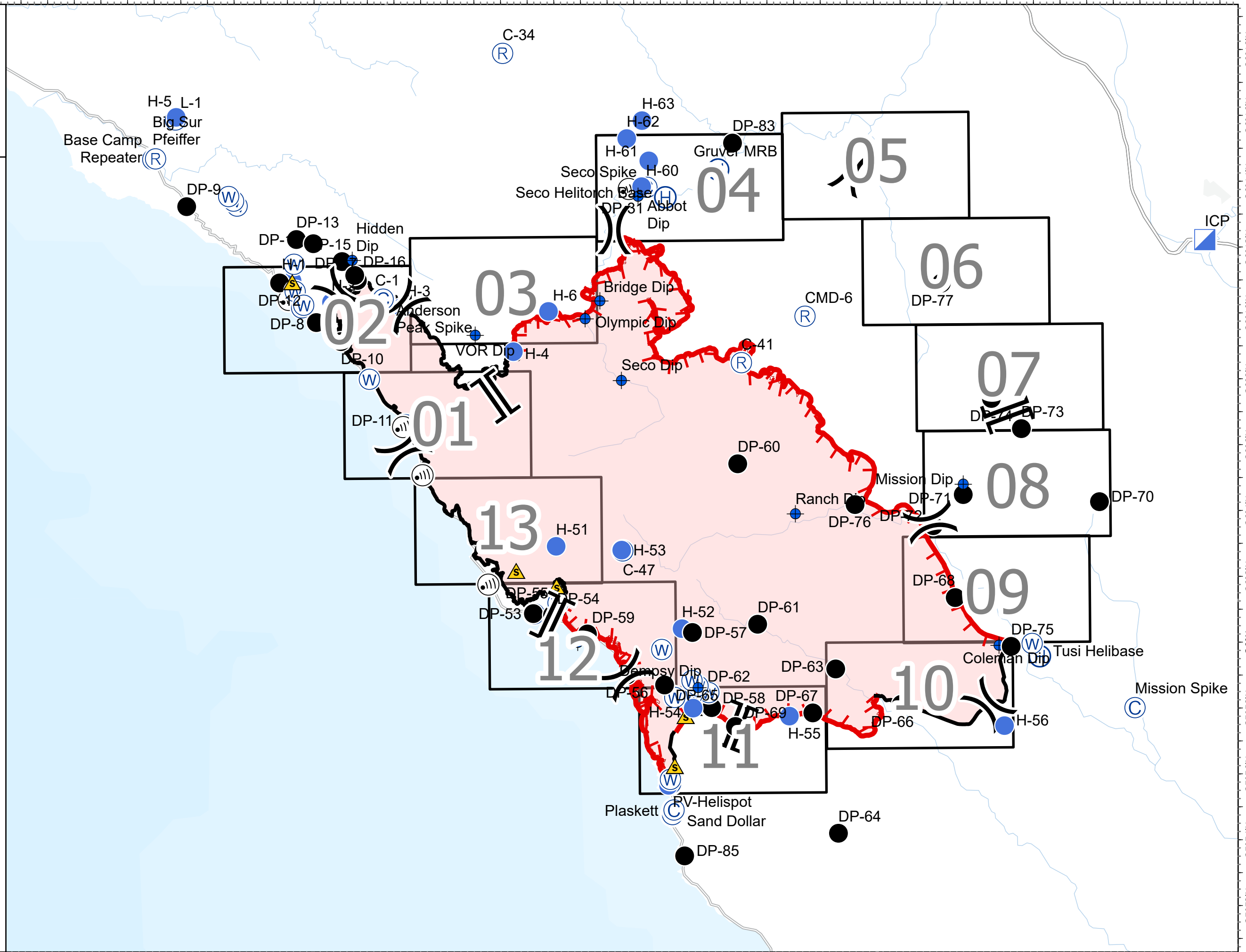
128,050 acres at 9/18/2020 1700 hrs



- IAP Map Index
- Camp
- Dip Site
- Drop Point
- Helibase
- Helispot
- Incident Command Post
- Internet Access
- Repeater
- Safety Zone
- Water Source
- Division Break
- Branch Break
- Uncontrolled Fire Edge
- Contained Line
- Wildfire Daily Fire Perimeter

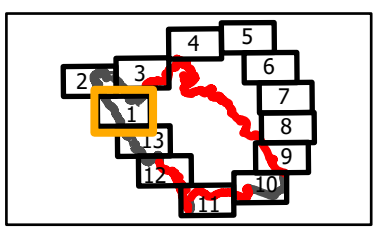


PNW2 GISS
9/19/2020 2132
Acres from IR and field reports
North American 1983 Datum.
LatLong Grid



IAP
 Branch I/VII-Div A South/Z
 North
 Page 1 of 13
Dolan Fire
CA-LPF-002428
9/20/2020
 128,050 acres at
 9/18/2020 1700 hrs

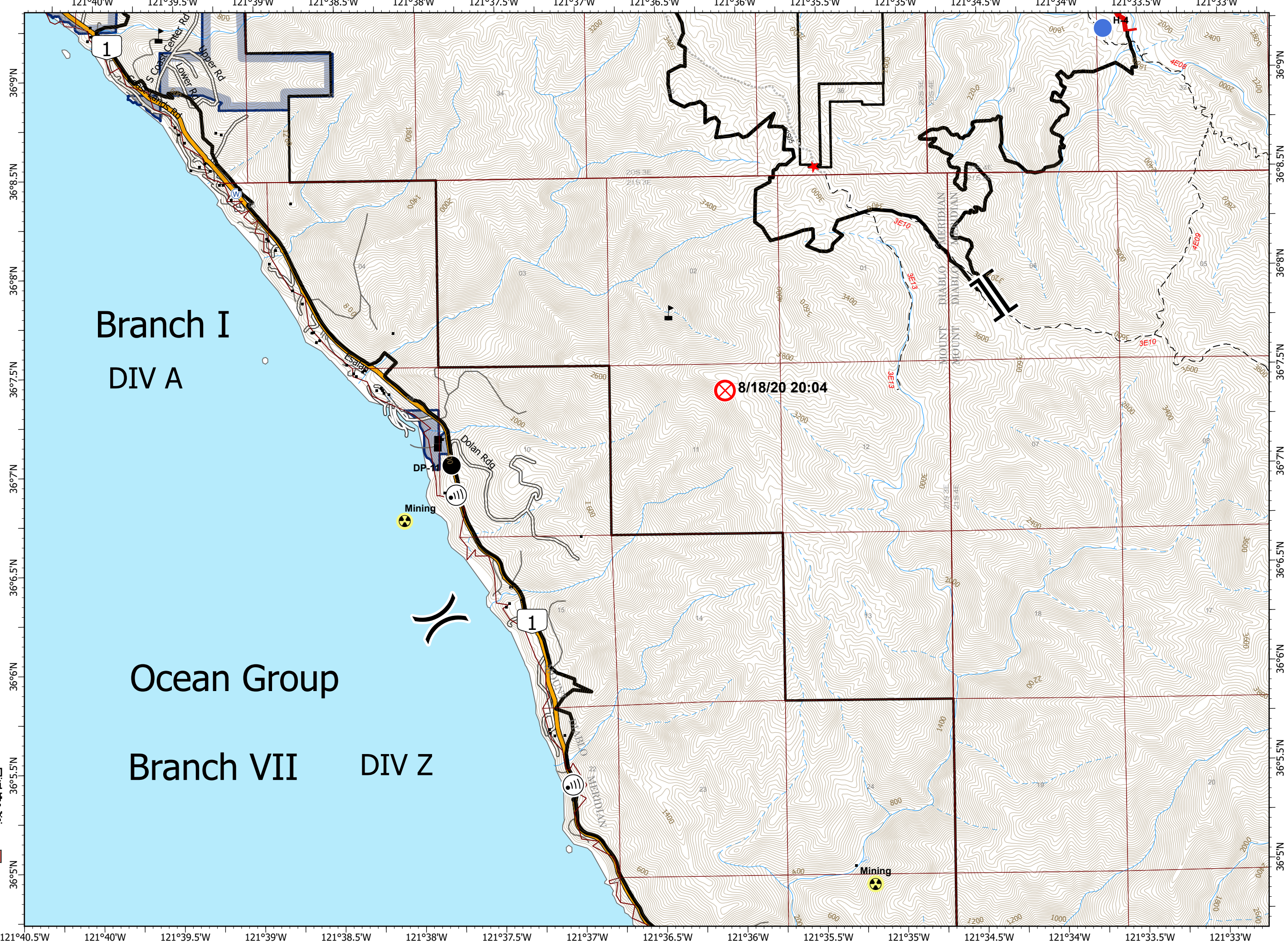
- Drop Point
- ⊗ Fire Origin
- ☢ Hazard
- Helispot
- Ⓜ Internet Access
- Ⓜ Water Source
- ⚠ Value at Risk
-) Division Break
- [[Branch Break
- ▬ Uncontrolled Fire Edge
- ▬ Contained Line
- Sensitive Natural Resources
- Sensitive Historical Resources
- State Park



0 1/4 1/2 Miles



PNW2 GISS
 9/19/2020 2134
 Acres from IR and field reports
 North American 1983 Datum.
 LatLong Grid



IAP

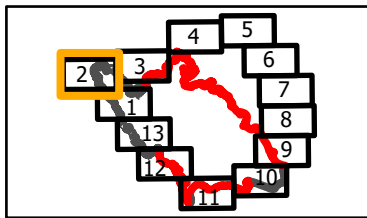
Branch I-Div A North/F
Page 2 of 13

Dolan Fire CA-LPF-002428

9/20/2020

128,050 acres at
9/18/2020 1700 hrs

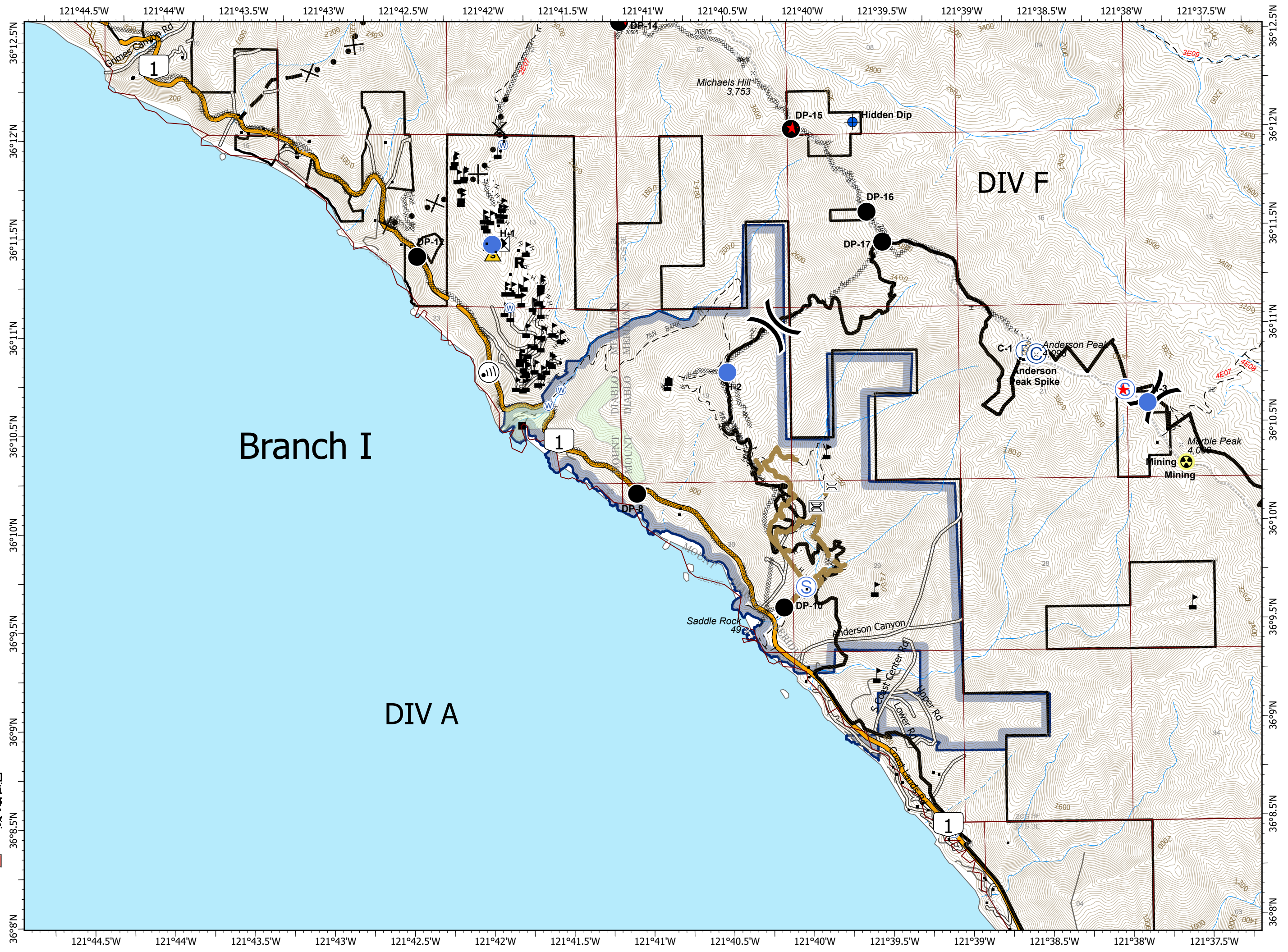
- Bridge
- Drop Point
- Camp
- Dip Site
- Hazard
- Helispot
- Internet Access
- Repeater
- Resource Location
- Road Repair
- Safety Zone
- Staging Area
- Water Source
- Value at Risk
- Division Break
- Contained Line
- Completed Dozer Line
- Completed Hand Line
- Proposed Dozer Line
- Planned Fire Line
- Repair Line
- Sensitive Natural Resources
- Sensitive Historical Resources
- State Park



0 1/4 1/2 Miles



PNW2 GISS
9/19/2020 2135
Acres from IR and field reports
North American 1983 Datum.
LatLong Grid



IAP

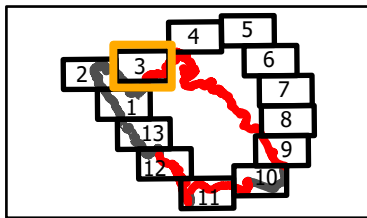
Branch I/IV-Div K/M
Page 3 of 13

Dolan Fire CA-LPF-002428

9/20/2020

128,050 acres at
9/18/2020 1700 hrs

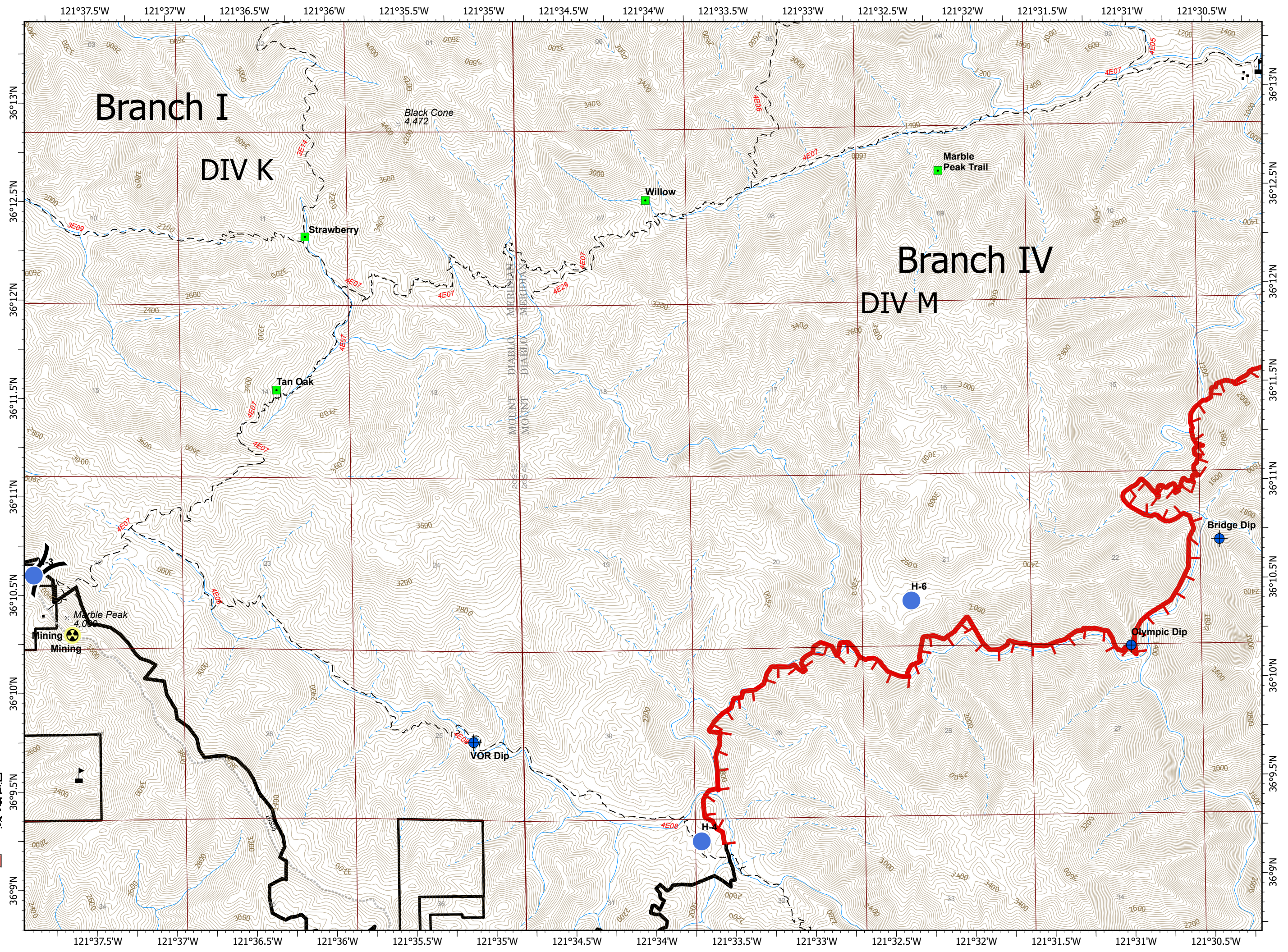
- Dip Site
- Hazard
- Helispot
- Landmark
- Staging Area
- Value at Risk
- Division Break
- Uncontrolled Fire Edge
- Contained Line



0 1/4 1/2 Miles



PNW2 GISS
9/19/2020 2135
Acres from IR and field reports
North American 1983 Datum.
LatLong Grid



IAP

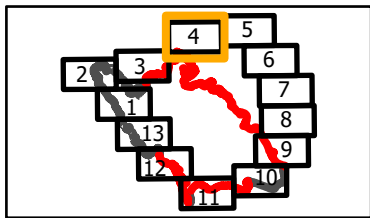
Branch IV-Div O
Page 4 of 13

Dolan Fire CA-LPF-002428

9/20/2020

128,050 acres at
9/18/2020 1700 hrs

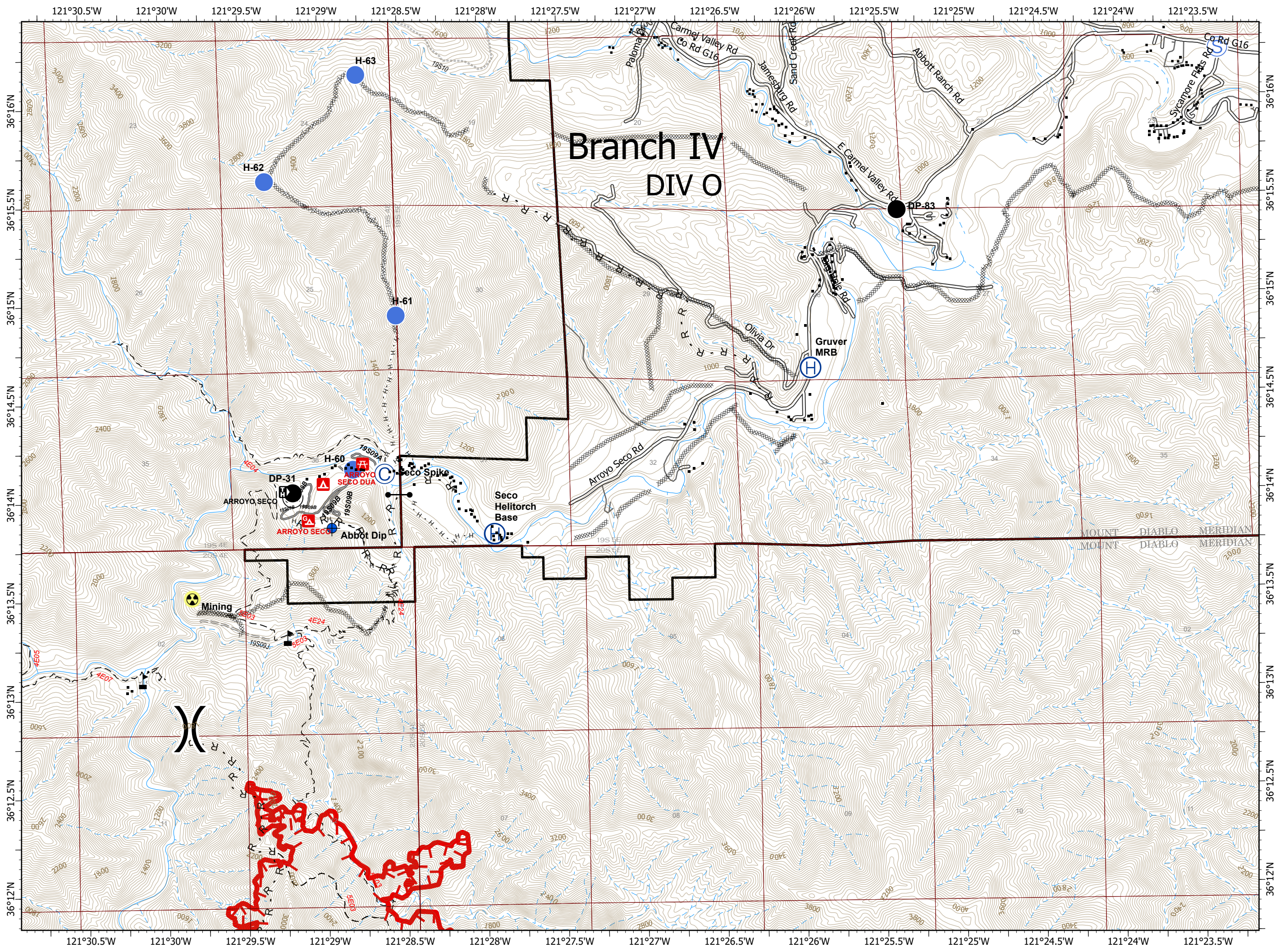
- Drop Point
- Camp
- ⊕ Dip Site
- Gate
- ☠ Hazard
- ⊕ Helibase
- Helispot
- 📶 Internet Access
- Landmark
- ⊕ Staging Area
- 🚒 Value at Risk
-) Division Break
- ▬ Uncontrolled Fire Edge
- ▬ Completed Dozer Line
- H · Completed Hand Line
- R Road as Completed Line



0 1/4 1/2 Miles



PNW2 GISS
9/19/2020 2135
Acres from IR and field reports
North American 1983 Datum.
Lat/Long Grid



IAP

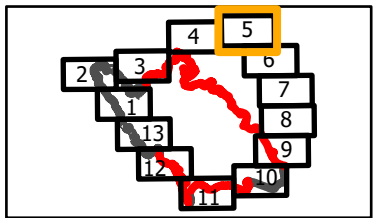
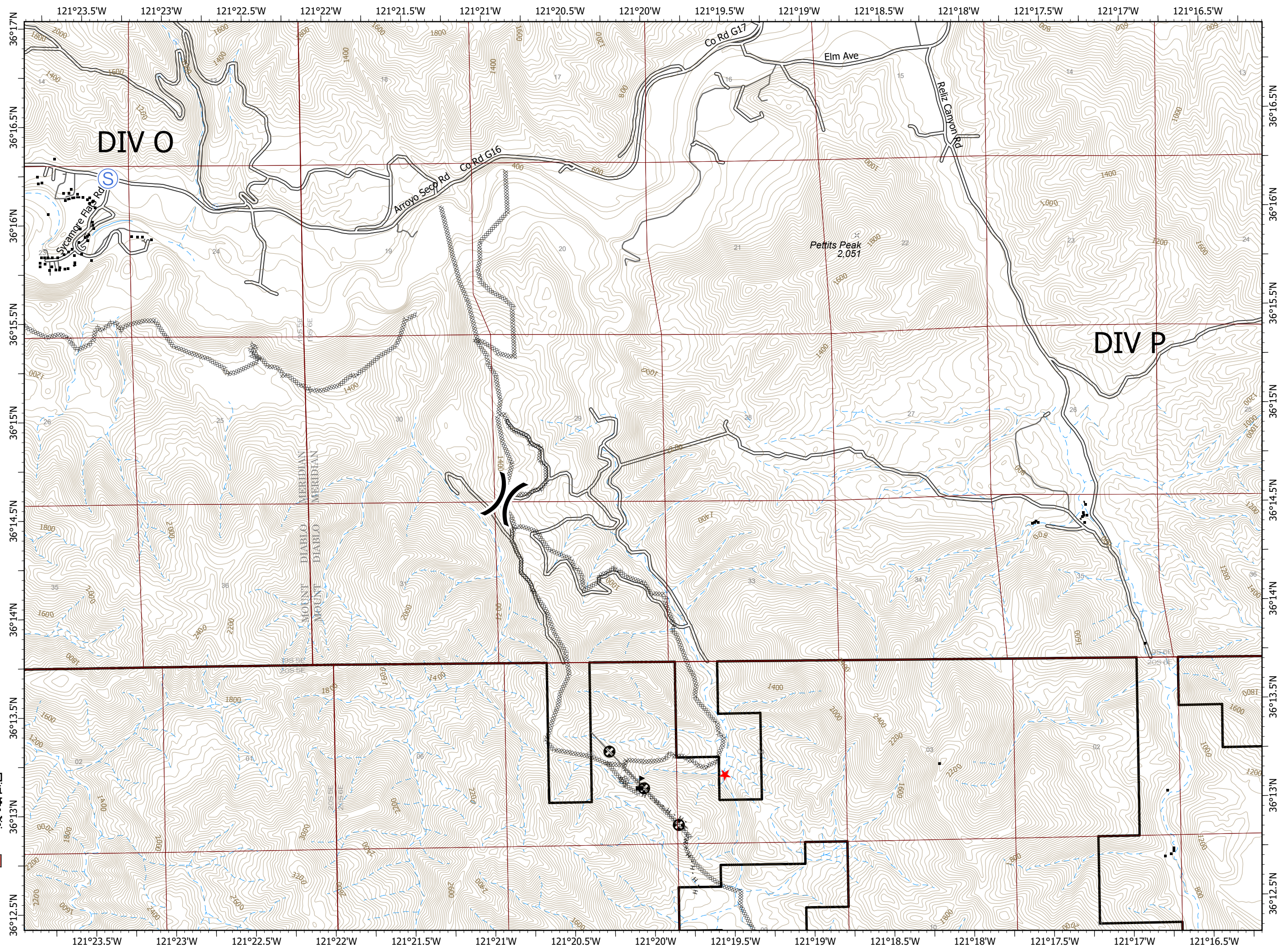
Branch IV-Div O/P
Page 5 of 13

Dolan Fire CA-LPF-002428

9/20/2020

128,050 acres at
9/18/2020 1700 hrs

- Staging Area
- Value at Risk
- Division Break
- Completed Dozer Line
- Completed Hand Line
- Other



0 1/4 1/2 Miles

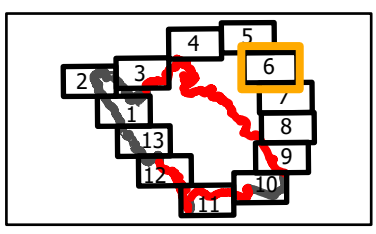


PNW2 GISS
9/19/2020 2135
Acres from IR and field reports
North American 1983 Datum.
Lat/Long Grid



IAP
 Branch IV-Div P North
 Page 6 of 13
Dolan Fire
CA-LPF-002428
9/20/2020
 128,050 acres at
 9/18/2020 1700 hrs

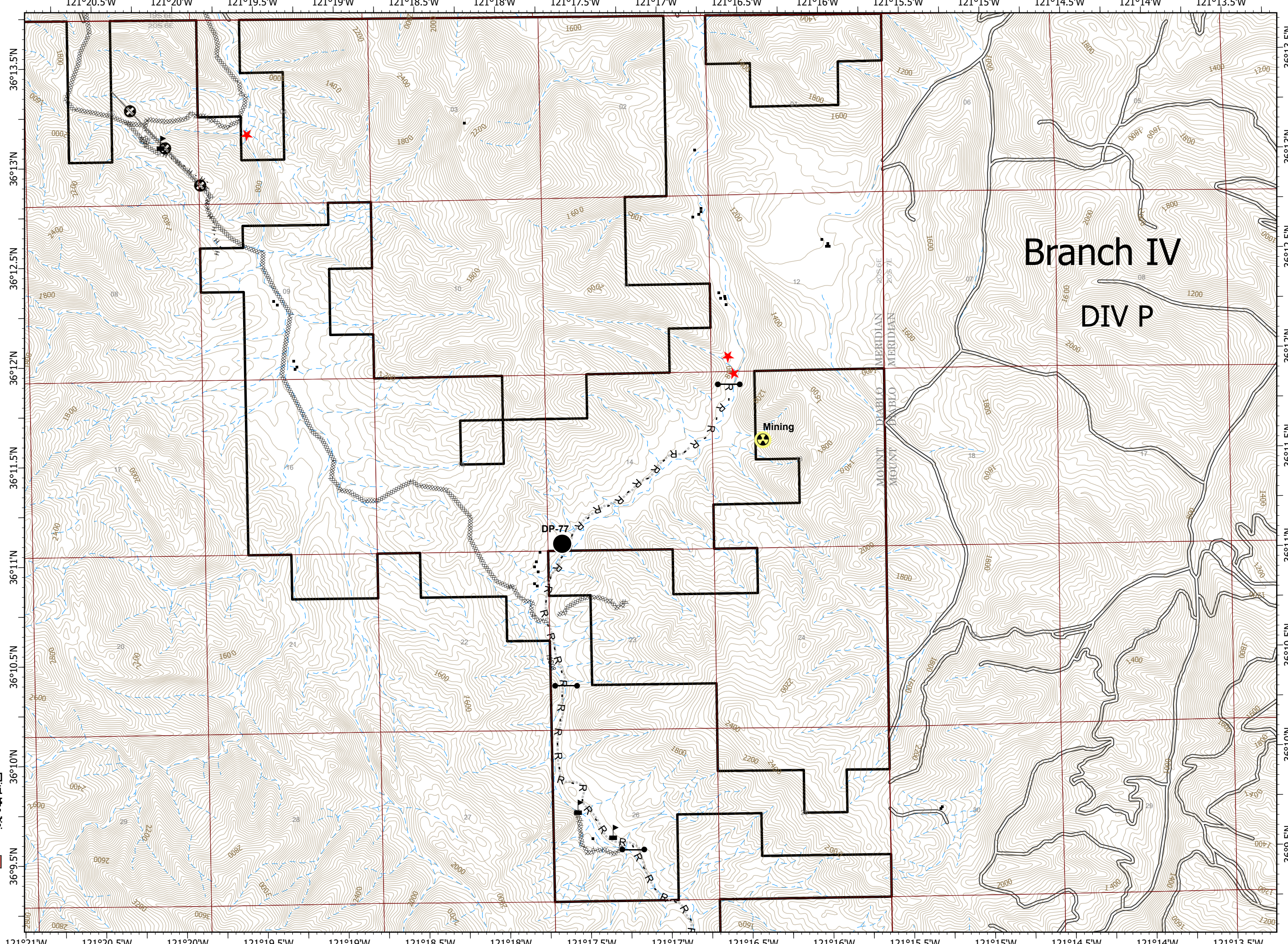
- Drop Point
- Gate
- ☠ Hazard
- ▲ Value at Risk
- xxxxx Completed Dozer Line
- H Completed Hand Line
- R Road as Completed Line
- ⊕ Other



0 1/4 1/2 Miles



PNW2 GISS
 9/19/2020 2135
 Acres from IR and field reports
 North American 1983 Datum.
 LatLong Grid



Branch IV
DIV P

Mining

DP-77

IAP

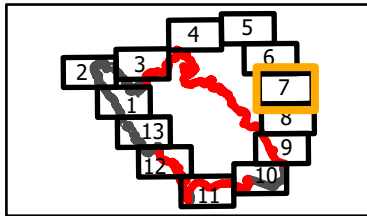
Branch IV-Div P South
Page 7 of 13

Dolan Fire CA-LPF-002428

9/20/2020

128,050 acres at
9/18/2020 1700 hrs

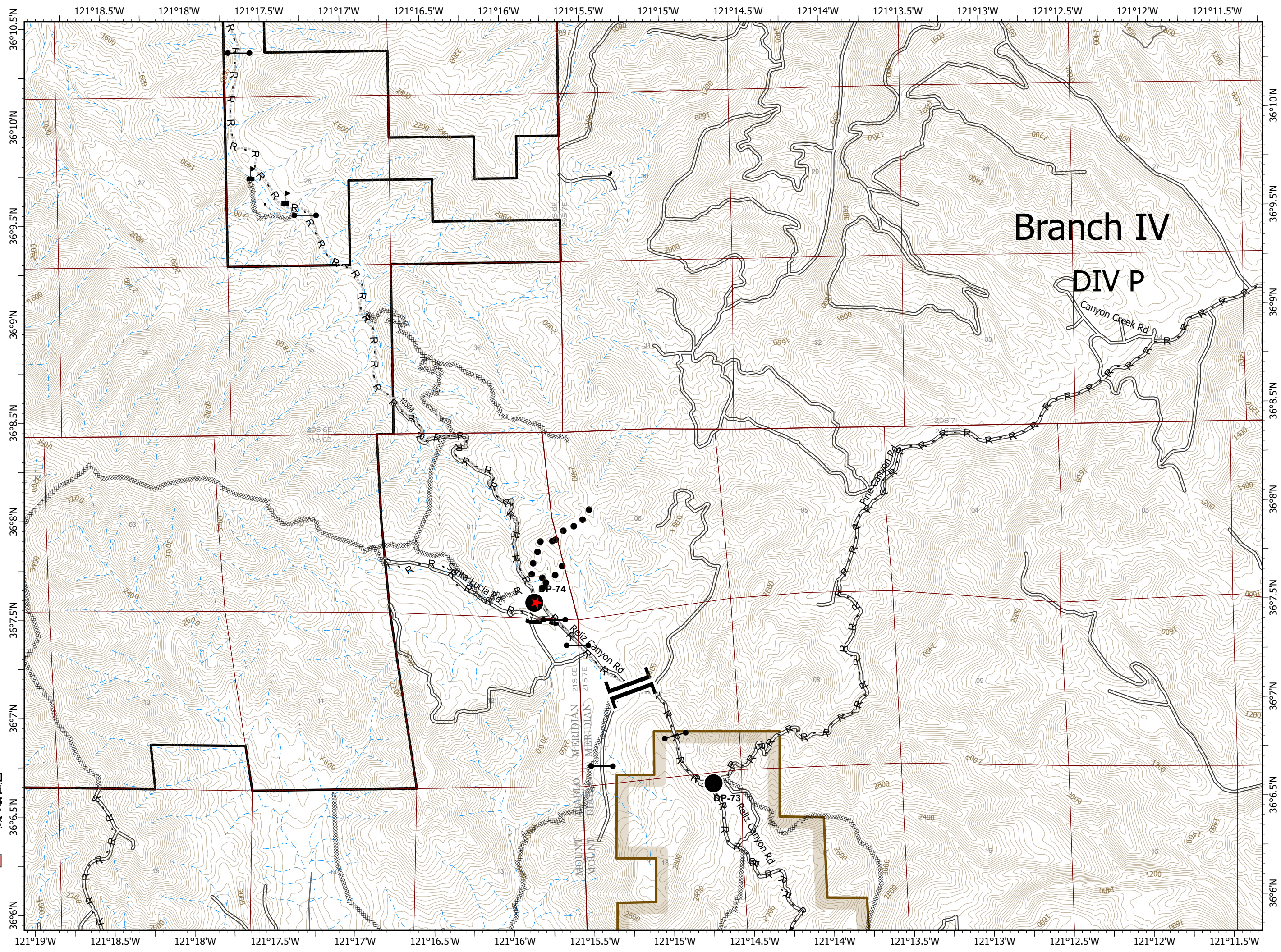
- Drop Point
- Gate
- ▲ Value at Risk
- || Branch Break
- xxxxx Completed Dozer Line
- R Road as Completed Line
- Planned Fire Line
- Planned Secondary Line
- Fort Hunter Liggett



0 1/4 1/2 Miles



PNW2 GISS
9/19/2020 2135
Acres from IR and field reports
North American 1983 Datum.
LatLong Grid



IAP

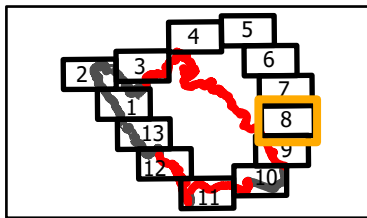
Branch V-Div R
Page 8 of 13

Dolan Fire CA-LPF-002428

9/20/2020

128,050 acres at
9/18/2020 1700 hrs

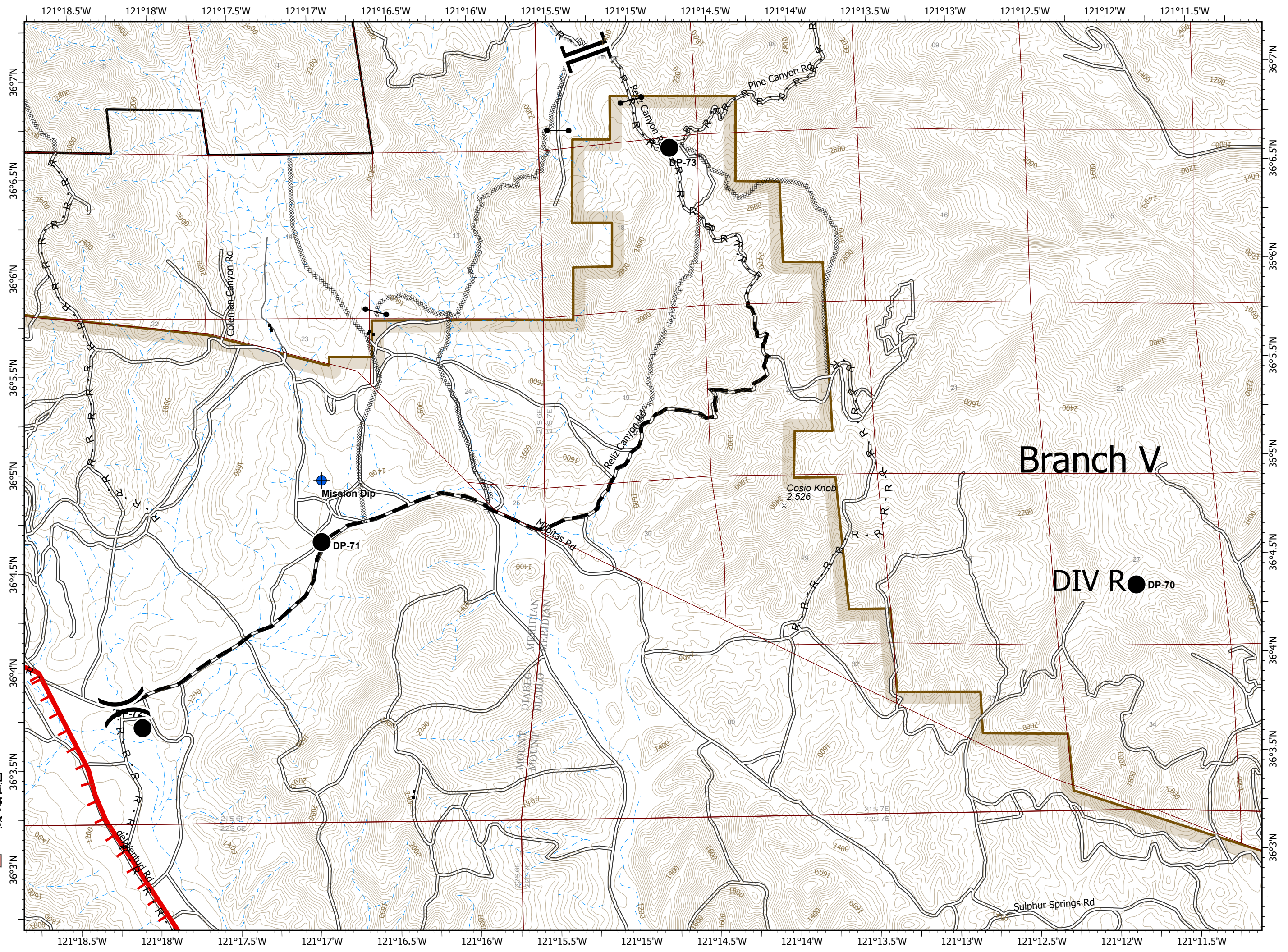
- Drop Point
- Dip Site
- Gate
-) Division Break
- || Branch Break
- Uncontrolled Fire Edge
- Completed Dozer Line
- R Road as Completed Line
- Planned Fire Line
- Fort Hunter Liggett



0 1/4 1/2 Miles



PNW2 GISS
9/19/2020 2136
Acres from IR and field reports
North American 1983 Datum.
LatLong Grid



Branch V

DIV R

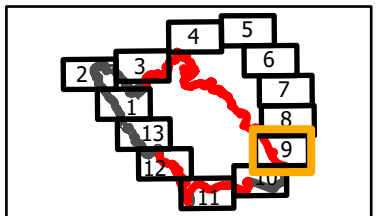
IAP

Branch V-Div S North
Page 9 of 13

Dolan Fire CA-LPF-002428 9/20/2020

128,050 acres at
9/18/2020 1700 hrs

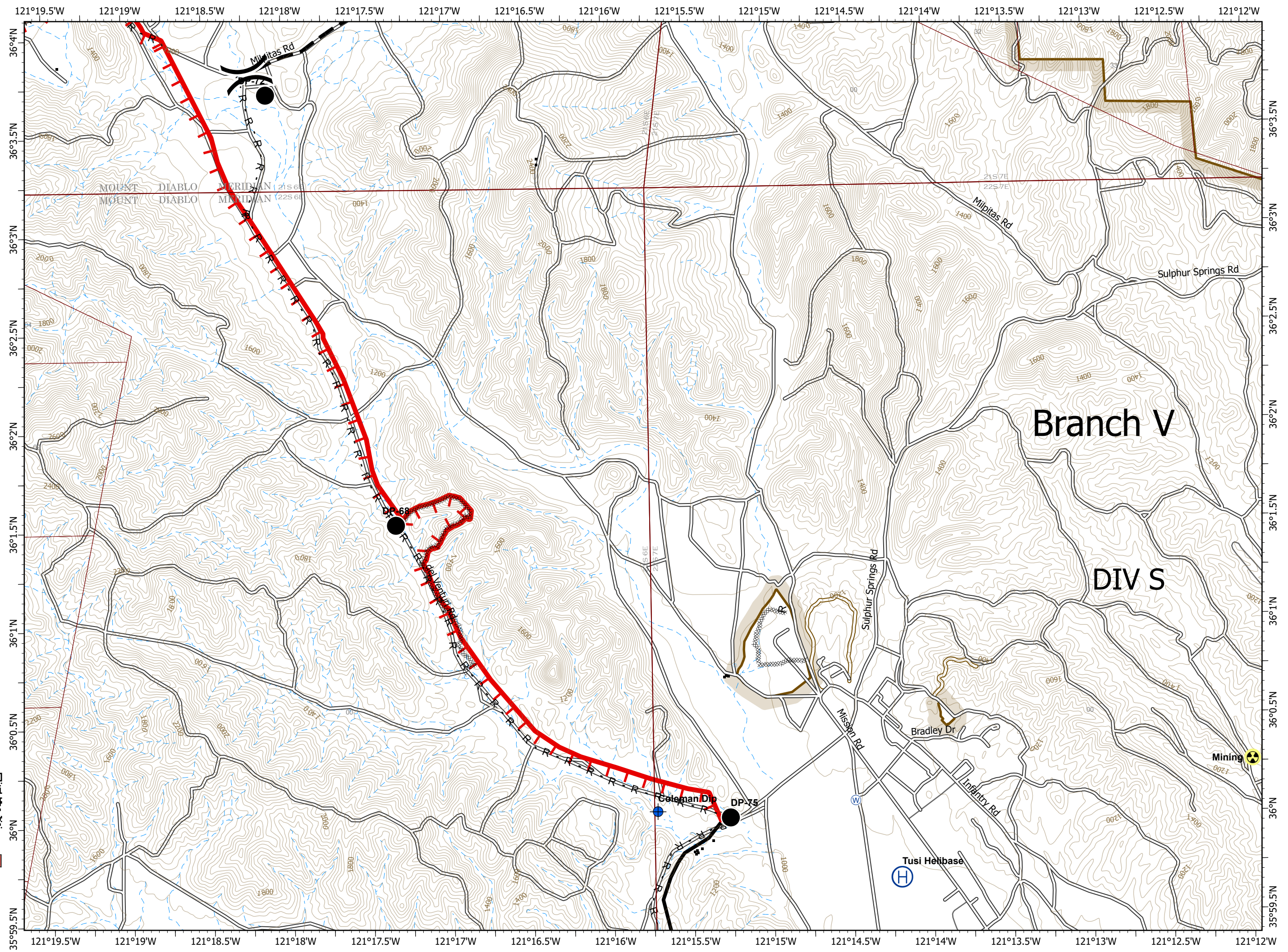
- Drop Point
- ⊕ Dip Site
- ☢ Hazard
- Ⓜ Helibase
- Ⓜ Water Source
-) Division Break
- ▬ Uncontrolled Fire Edge
- ▬ Contained Line
- ▬ Completed Dozer Line
- R Road as Completed Line
- ▬ Planned Fire Line
- ▭ Fort Hunter Liggett



0 1/4 1/2 Miles



PNW2 GISS
9/19/2020 2136
Acres from IR and field reports
North American 1983 Datum.
LatLong Grid



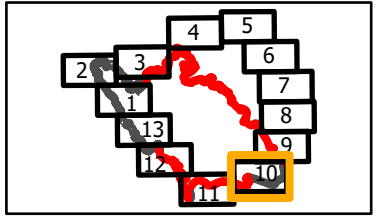
Branch V

DIV S

IAP
 Branch V-Div S South/W East
 Page 10 of 13

Dolan Fire
CA-LPF-002428
9/20/2020
 128,050 acres at
 9/18/2020 1700 hrs

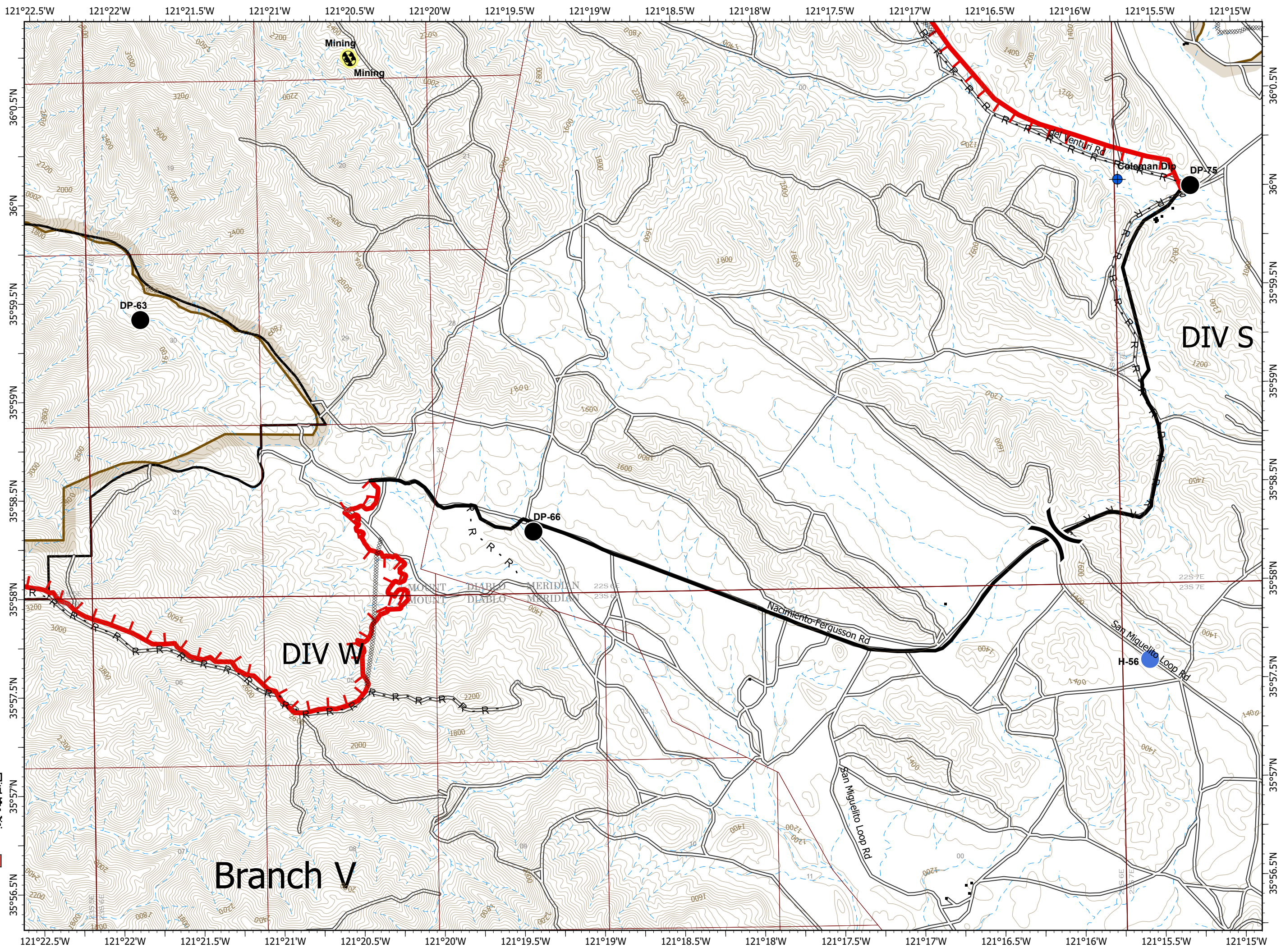
- Drop Point
- ⊕ Dip Site
- ☢ Hazard
- Helispot
-) Division Break
- ▬ Uncontrolled Fire Edge
- ▬ Contained Line
- xxxxx Completed Dozer Line
- R Road as Completed Line
- ▭ Fort Hunter Liggett



0 1/4 1/2 Miles



PNW2 GISS
 9/19/2020 2136
 Acres from IR and field reports
 North American 1983 Datum.
 LatLong Grid



DIV S

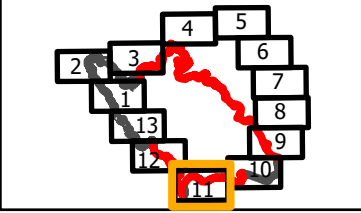
DIV W

Branch V

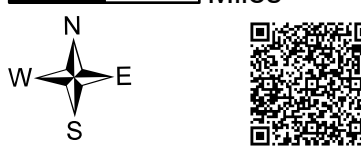
IAP
 Branch V/VII-Div W West/X
 Page 11 of 13

Dolan Fire
 CA-LPF-002428
 9/20/2020
 128,050 acres at
 9/18/2020 1700 hrs

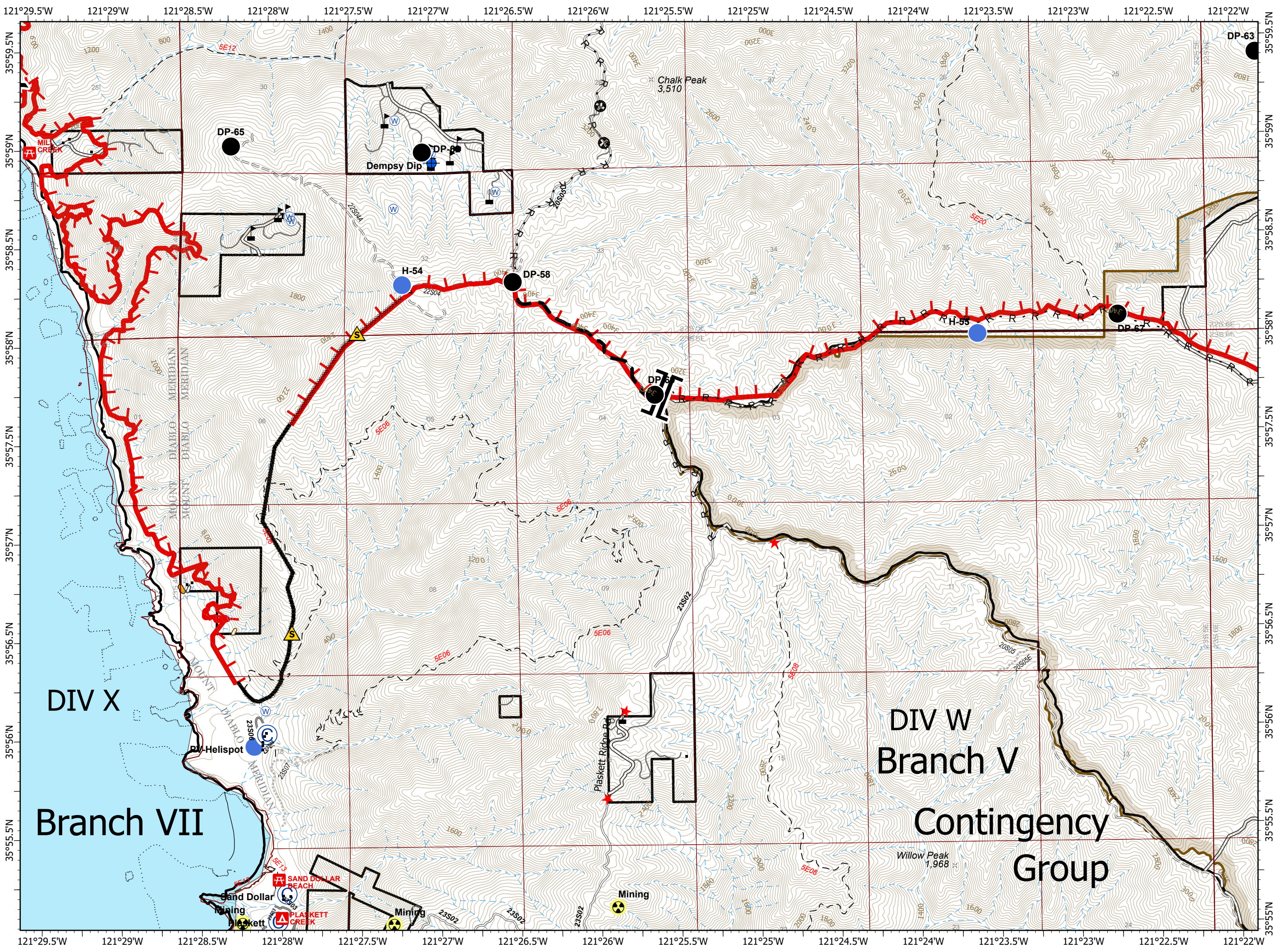
- Drop Point
- ⊙ Camp
- ⊕ Dip Site
- ☠ Hazard
- Helispot
- ⚠ Safety Zone
- ⊙ Water Source
- ⚠ Value at Risk
- || Branch Break
- ┌ Uncontrolled Fire Edge
- Contained Line
- ⊗ Completed Dozer Line
- Ⓜ Road as Completed Line
- Planned Fire Line
- ⊙ Other
- ▭ Fort Hunter Liggett



0 1/4 1/2 Miles



PNW2 GISS
 9/19/2020 2136
 Acres from IR and field reports
 North American 1983 Datum.
 Lat/Long Grid



DIV X

Branch VII

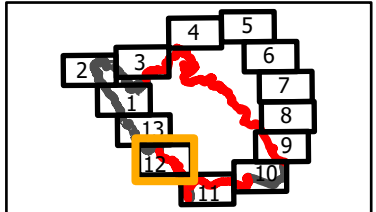
DIV W
 Branch V

Contingency
 Group

IAP
 Branch I/VII-Div X/Y/Z
 Page 12 of 13

Dolan Fire
 CA-LPF-002428
 9/20/2020
 128,050 acres at
 9/18/2020 1700 hrs

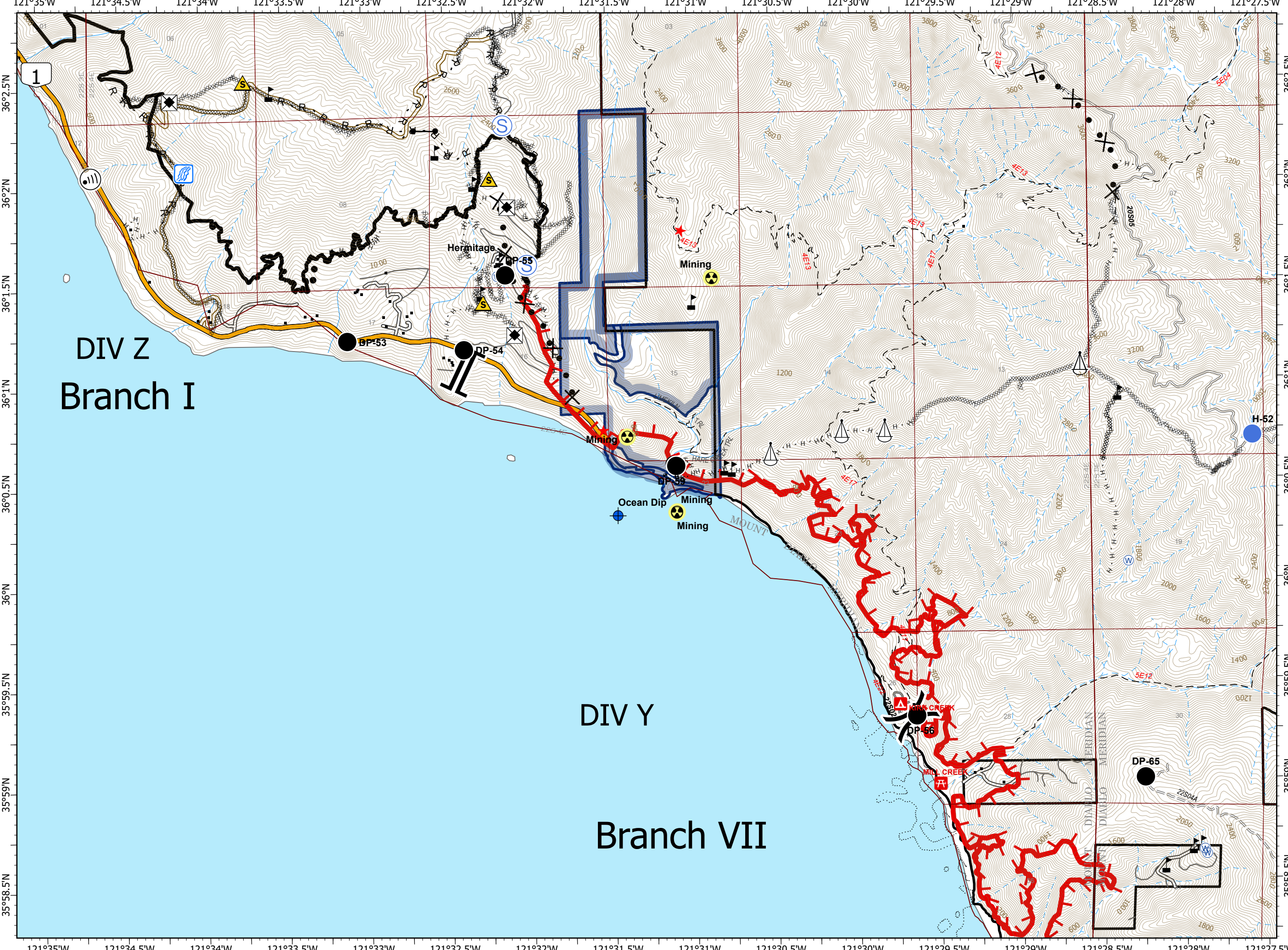
- Drop Point
- ◆ Dip Site
- Gate
- ☠ Hazard
- Helispot
- Ⓜ Internet Access
- ✂ Road Repair
- ▲ Safety Zone
- △ Sling Site
- Ⓢ Staging Area
- 🌊 Stream Crossing
- 🌊 Water Source
- ⊕ Water Development or Draft Site
- ⚠ Value at Risk
-) (Division Break
-] [Branch Break
- 🔴 Uncontrolled Fire Edge
- Contained Line
- ⓧ Completed Dozer Line
- H · Completed Hand Line
- Ⓜ Road as Completed Line
- ✂ Proposed Dozer Line
- Planned Secondary Line
- 🏞 State Park



0 1/4 1/2 Miles



PNW2 GISS
 9/19/2020 2136
 Acres from IR and field reports
 North American 1983 Datum.
 LatLong Grid



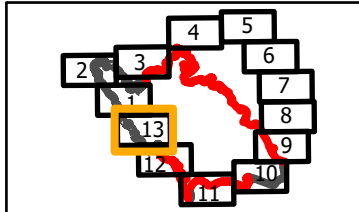
121°35'W 121°34.5'W 121°34'W 121°33.5'W 121°33'W 121°32.5'W 121°32'W 121°31.5'W 121°31'W 121°30.5'W 121°30'W 121°29.5'W 121°29'W 121°28.5'W 121°28'W 121°27.5'W

36°2.5'N 36°2'N 36°1.5'N 36°1'N 36°0.5'N 36°N 35°59.5'N 35°59'N 35°58.5'N

IAP
 Branch VII-Div Z
 Page 13 of 13

Dolan Fire
 CA-LPF-002428
 9/20/2020
 128,050 acres at
 9/18/2020 1700 hrs

- Drop Point
- Gate
- ☠ Hazard
- Helispot
- 📶 Internet Access
- 🛠 Road Repair
- ⚠ Safety Zone
- Ⓢ Staging Area
- 🌊 Stream Crossing
- 🏊 Water Source
- 🚩 Value at Risk
- 🔴 Uncontrolled Fire Edge
- Contained Line
- ⊘ Completed Dozer Line
- H Completed Hand Line
- R Road as Completed Line
- × Proposed Dozer Line
- Planned Secondary Line
- 🏞 State Park



0 1/4 1/2 Miles



PNW2 GISS
 9/19/2020 2136
 Acres from IR and field reports
 North American 1983 Datum.
 Lat/Long Grid

