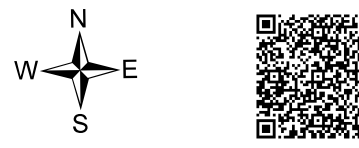
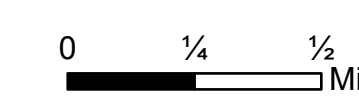


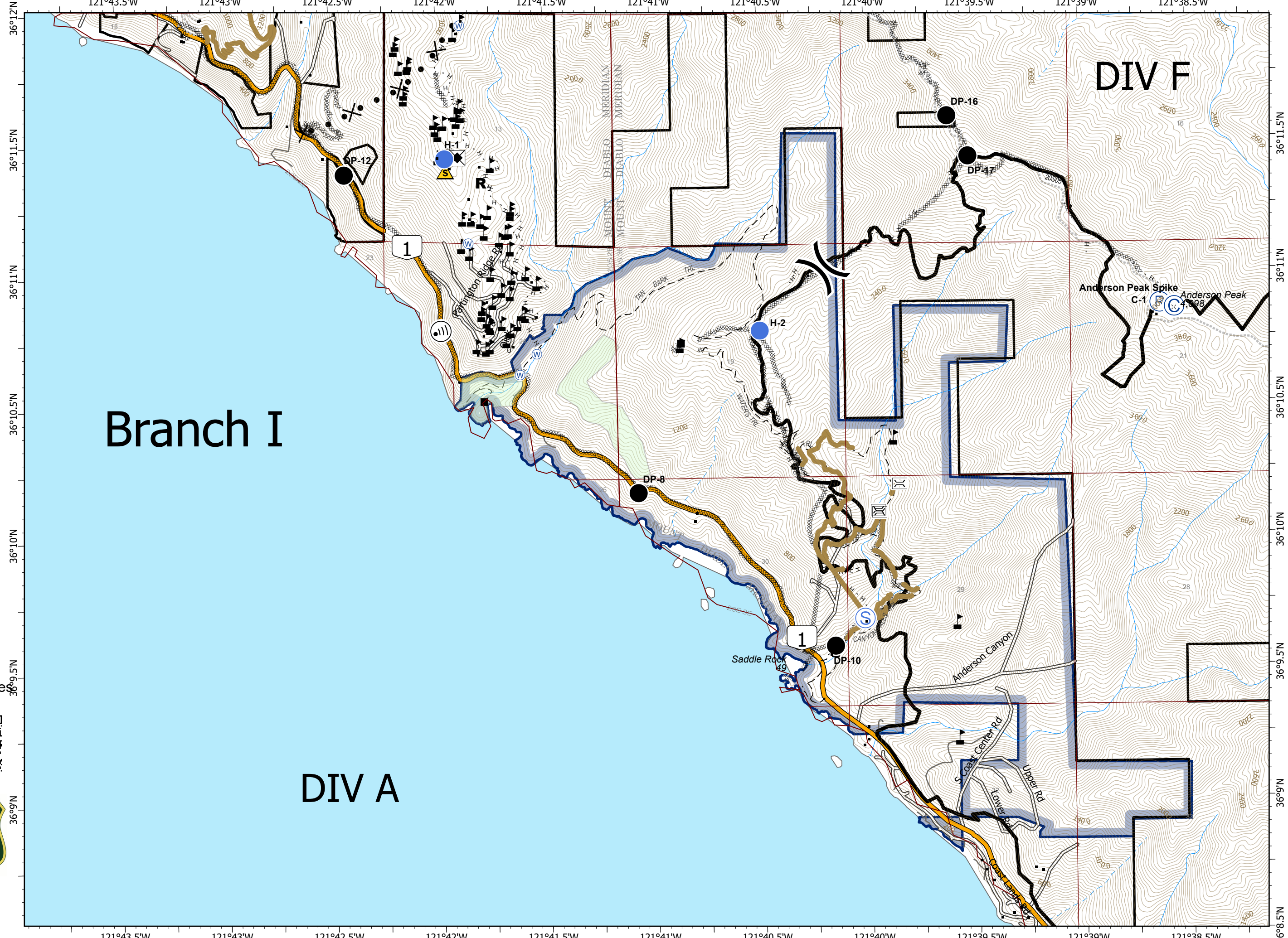
**IAP**  
 Branch I-Div A North/F  
 Page 2 of 13

**Dolan Fire**  
 CA-LPF-002428  
 9/23/2020  
 128,417 acres at  
 9/21/2020 2000 hrs

- Bridge
- Drop Point
- Camp
- Dip Site
- Helispot
- Internet Access
- Repeater
- Resource Location
- Road Repair
- Safety Zone
- Staging Area
- Water Source
- Value at Risk
- Division Break
- Contained Line
- Completed Dozer Line
- Completed Hand Line
- Proposed Dozer Line
- Repair Line
- Sensitivity Resources
- Sensitive Historical Resources
- State Park



CAIIMT15 GISS  
 9/22/2020 2045  
 Acres from IR and field reports  
 North American 1983 Datum.  
 LatLong Grid



**Branch I**

**DIV A**

**DIV F**

Anderson Peak Spike  
 C-1  
 Anderson Peak

Saddle Rock  
 49

Anderson Canyon

S Coast Center Rd

Lower Rd

Upper Rd

1

1

DP-12

DP-16

DP-17

DP-8

DP-10

H-2

16

16

16

16

16

16

36°12'N  
36°11.5'N  
36°11'N  
36°10.5'N  
36°10'N  
36°10'N  
36°9.5'N  
36°9'N

36°11.5'N  
36°11'N  
36°10.5'N  
36°10'N  
36°10'N  
36°9.5'N  
36°9'N

121°43.5'W 121°43'W 121°42.5'W 121°42'W 121°41.5'W 121°41'W 121°40.5'W 121°40'W 121°39.5'W 121°39'W 121°38.5'W