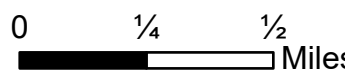
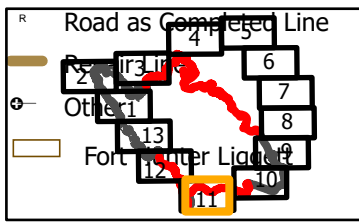


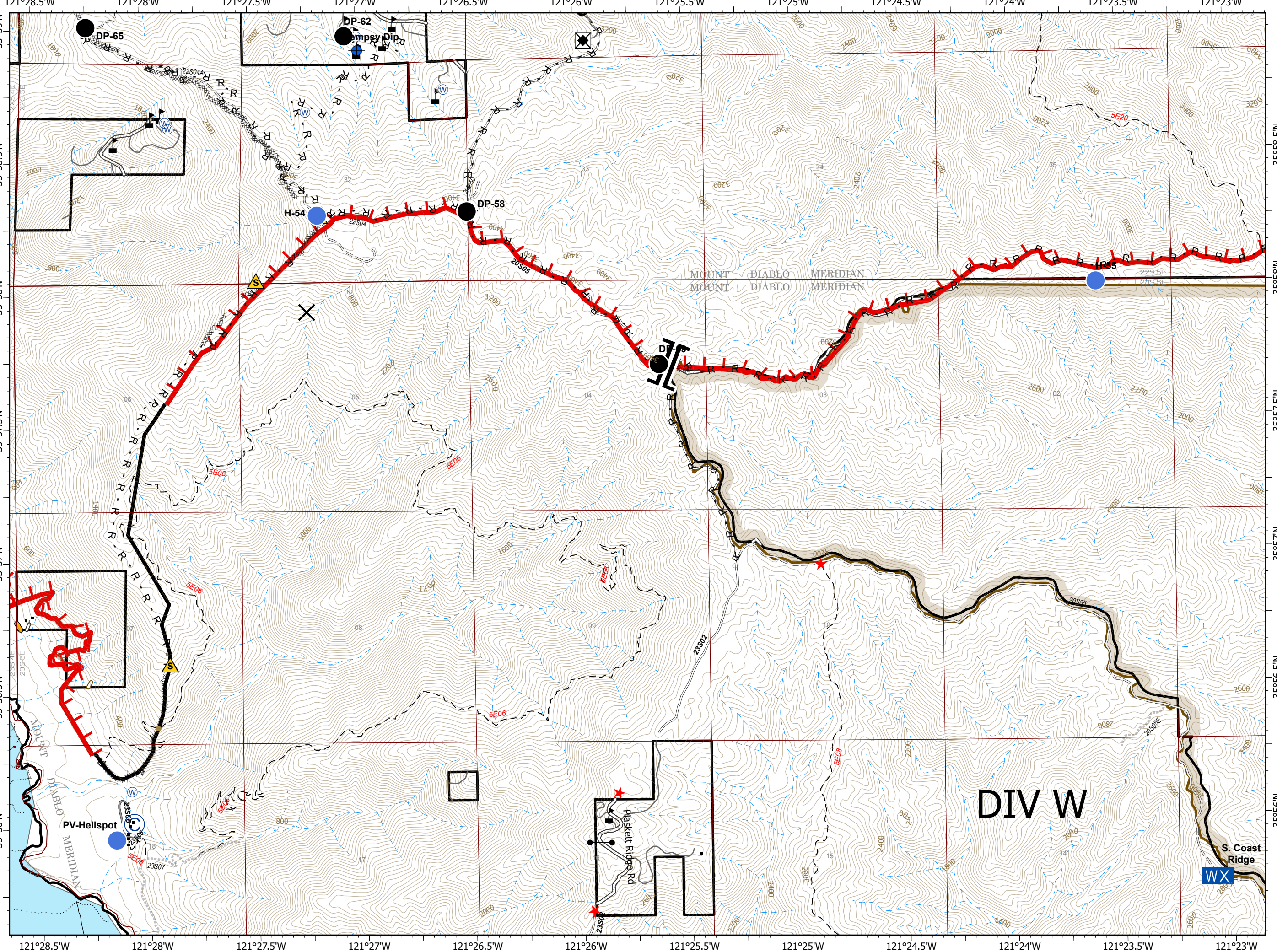
IAP
 Branch IV/I-Div W West/X
 Page 11 of 13

Dolan Fire
 CA-LPF-002428
 9/25/2020
 128,418 acres at
 9/23/2020 2040 hrs

- Drop Point
- ⊙ Camp
- ✕ Closure
- ⊕ Dip Site
- ⚬ Gate
- Helispot
- WX Mobile Weather Unit
- ✂ Road Repair
- ⚠ Safety Zone
- ⊙ Water Source
- ⚠ Value at Risk
- || Branch Break
- Uncontrolled Fire Edge
- Contained Line
- XXXX Completed Dozer Line



CAIIMT15 GISS
 9/24/2020 2200
 Acres from IR and field reports
 North American 1983 Datum.
 LatLong Grid



DIV W

