

Point Type	Name	Latitude	Longitude
Camp	Big Sur Pfeiffer	36° 15.189' N	121° 47.129' W
Camp	Seco Spike	36° 14.132' N	121° 28.615' W
Camp	Anderson Peak Spike	36° 10.854' N	121° 38.563' W
Camp	Mission Spike	35° 58.075' N	121° 10.685' W
Camp	Sand Dollar	35° 55.206' N	121° 27.967' W
Camp	Plaskett	35° 55.067' N	121° 28.025' W
Drop Point	DP-83	36° 15.435' N	121° 25.378' W
Drop Point	DP-31	36° 14.040' N	121° 29.193' W
Drop Point	DP-9	36° 13.743' N	121° 45.879' W
Drop Point	DP-13	36° 12.700' N	121° 41.781' W
Drop Point	DP-14	36° 12.567' N	121° 41.149' W
Drop Point	DP-15	36° 12.012' N	121° 40.081' W
Drop Point	DP-16	36° 11.586' N	121° 39.615' W
Drop Point	DP-17	36° 11.433' N	121° 39.519' W
Drop Point	DP-12	36° 11.388' N	121° 42.434' W
Drop Point	DP-77	36° 11.073' N	121° 17.640' W
Drop Point	DP-8	36° 10.170' N	121° 41.076' W
Drop Point	DP-10	36° 09.582' N	121° 40.164' W
Drop Point	DP-74	36° 07.543' N	121° 15.842' W
Drop Point	DP-11	36° 07.038' N	121° 37.804' W
Drop Point	DP-73	36° 06.610' N	121° 14.741' W
Drop Point	DP-60	36° 05.690' N	121° 25.379' W
Drop Point	DP-71	36° 04.639' N	121° 16.959' W
Drop Point	DP-76	36° 04.392' N	121° 21.014' W
Drop Point	DP-70	36° 04.349' N	121° 11.869' W
Drop Point	DP-72	36° 03.711' N	121° 18.100' W
Drop Point	DP-55	36° 01.557' N	121° 32.133' W
Drop Point	DP-68	36° 01.515' N	121° 17.328' W
Drop Point	DP-53	36° 01.236' N	121° 33.109' W
Drop Point	DP-54	36° 01.186' N	121° 32.393' W
Drop Point	DP-61	36° 00.807' N	121° 24.731' W
Drop Point	DP-59	36° 00.593' N	121° 31.100' W
Drop Point	DP-57	36° 00.588' N	121° 27.174' W
Drop Point	DP-75	36° 00.004' N	121° 15.268' W
Drop Point	DP-63	35° 59.410' N	121° 21.841' W
Drop Point	DP-56	35° 59.330' N	121° 29.644' W
Drop Point	DP-65	35° 59.008' N	121° 28.245' W
Drop Point	DP-62	35° 58.962' N	121° 27.054' W
Drop Point	DP-66	35° 58.302' N	121° 19.408' W
Drop Point	DP-58	35° 58.297' N	121° 26.499' W
Drop Point	DP-67	35° 58.087' N	121° 22.724' W
Drop Point	DP-69	35° 57.713' N	121° 25.623' W
Drop Point	DP-64	35° 54.418' N	121° 21.841' W
Drop Point	DP-85	35° 53.807' N	121° 27.596' W
Helispot	H-5	36° 16.460' N	121° 46.230' W
Helispot	H-63	36° 16.160' N	121° 28.760' W
Helispot	H-62	36° 15.623' N	121° 29.343' W
Helispot	H-61	36° 14.935' N	121° 28.530' W
Helispot	H-60	36° 14.155' N	121° 28.813' W
Helispot	H-1	36° 11.445' N	121° 41.963' W
Helispot	H-2	36° 10.780' N	121° 40.500' W
Helispot	H-3	36° 10.600' N	121° 37.870' W
Helispot	H-6	36° 10.408' N	121° 32.376' W
Helispot	H-4	36° 09.201' N	121° 33.711' W
Helispot	H-51	36° 03.270' N	121° 32.220' W
Helispot	H-53	36° 03.124' N	121° 29.770' W
Helispot	H-52	36° 00.710' N	121° 27.560' W
Helispot	H-54	35° 58.290' N	121° 27.191' W
Helispot	H-55	35° 58.000' N	121° 23.601' W
Helispot	H-56	35° 57.600' N	121° 15.571' W
Helispot	PV-Helispot	35° 55.957' N	121° 28.158' W
Ranch	Merle Ranch	36° 4.090' N	121° 21.435' W

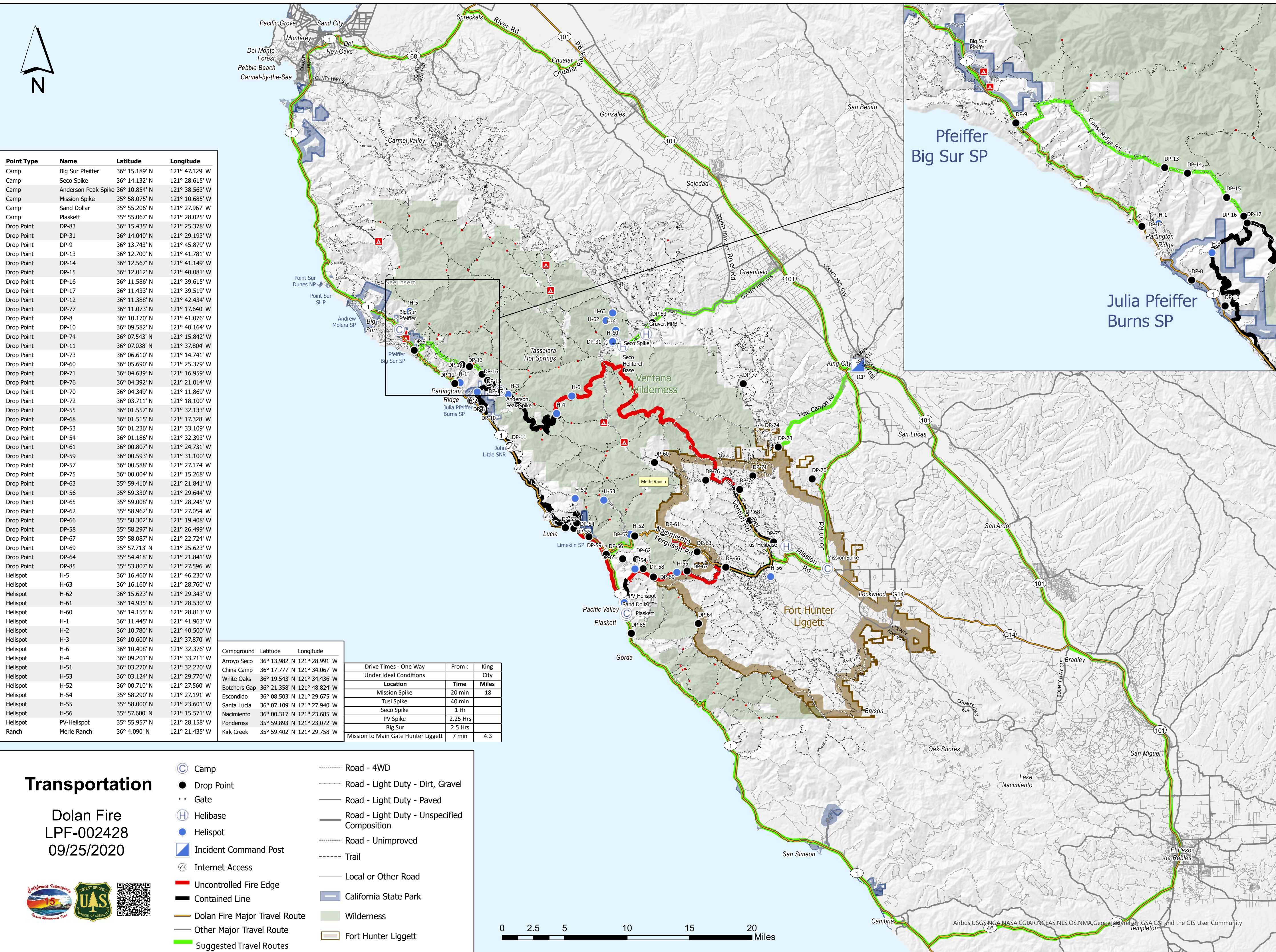
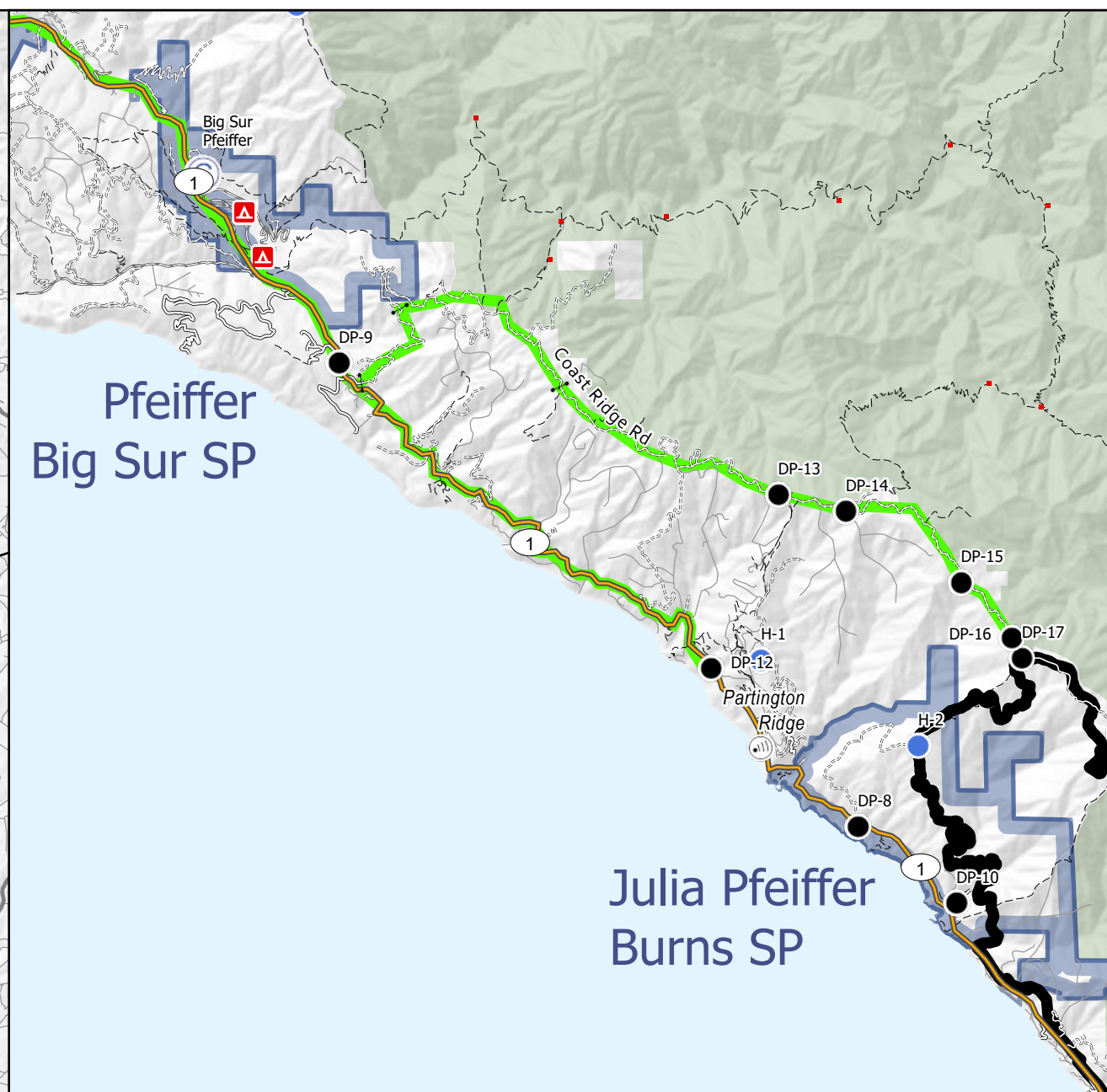
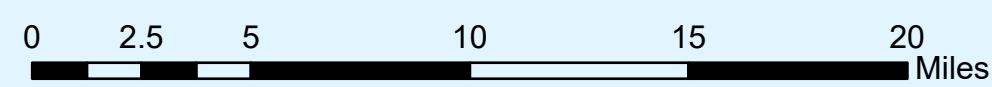
Campground	Latitude	Longitude
Arroyo Seco	36° 13.982' N	121° 28.991' W
China Camp	36° 17.777' N	121° 34.067' W
White Oaks	36° 19.543' N	121° 34.436' W
Botchers Gap	36° 21.358' N	121° 48.824' W
Escondido	36° 08.503' N	121° 29.675' W
Santa Lucia	36° 07.109' N	121° 27.940' W
Nacimiento	36° 00.317' N	121° 23.685' W
Ponderosa	35° 59.893' N	121° 23.072' W
Kirk Creek	35° 59.402' N	121° 29.758' W

Location	Time	Miles
Mission Spike	20 min	18
Tusi Spike	40 min	
Seco Spike	1 Hr	
PV Spike	2.25 Hrs	
Big Sur	2.5 Hrs	
Mission to Main Gate Hunter Liggett	7 min	4.3

Transportation

Dolan Fire
LPF-002428
09/25/2020

- Camp
- Drop Point
- Gate
- Helibase
- Helispot
- Incident Command Post
- Internet Access
- Uncontrolled Fire Edge
- Contained Line
- Dolan Fire Major Travel Route
- Other Major Travel Route
- Suggested Travel Routes
- Road - 4WD
- Road - Light Duty - Dirt, Gravel
- Road - Light Duty - Paved
- Road - Light Duty - Unspecified Composition
- Road - Unimproved
- Trail
- Local or Other Road
- California State Park
- Wilderness
- Fort Hunter Liggett



Airbus, USGS, NGA, NASA, CGIAR, NCEAS, NLS, OS, NMA, Geod46, Pelson, GSA, GSI and the GIS User Community