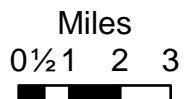


Pilot Map

Dolan Fire
CA-LPF-002428
9/26/2020

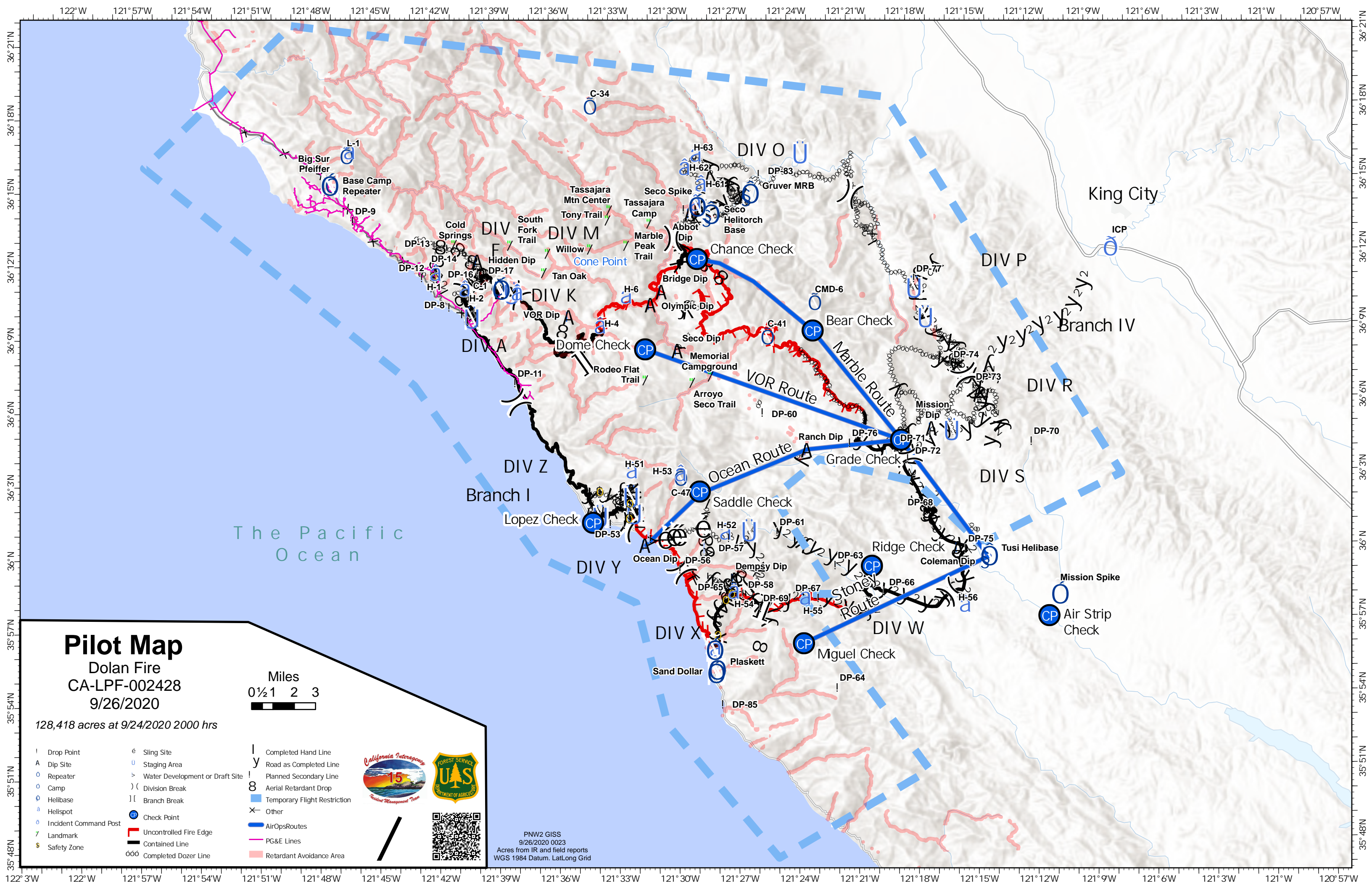
128,418 acres at 9/24/2020 2000 hrs



- | | | |
|-------------------------|-----------------------------------|------------------------------|
| ! Drop Point | é Sling Site | l Completed Hand Line |
| A Dip Site | u Staging Area | y Road as Completed Line |
| o Repeater | > Water Development or Draft Site | ! Planned Secondary Line |
| o Camp |) Division Break | 8 Aerial Retardant Drop |
| o Helibase | Branch Break | Temporary Flight Restriction |
| o Helispot | o Check Point | x Other |
| o Incident Command Post | o Uncontrolled Fire Edge | o AirOpsRoutes |
| 7 Landmark | o Contained Line | o PG&E Lines |
| o Safety Zone | o Completed Dozer Line | o Retardant Avoidance Area |



PNW2 GISS
9/26/2020 0023
Acres from IR and field reports
WGS 1984 Datum, Lat/Long Grid



| FeatureCategory | Label | LatWGS84_DDM | LongWGS84_DDM | Notes | Division |
|---------------------------------|----------------------|---------------|----------------|---|----------|
| Camp | | 35° 56.017' N | 121° 28.076' W | | |
| Camp | Anderson Peak Spike | 36° 10.854' N | 121° 38.563' W | | |
| Camp | Big Sur Pfeiffer | 36° 15.189' N | 121° 47.129' W | | |
| Camp | Mission Spike | 35° 58.075' N | 121° 10.685' W | | |
| Camp | Plaskett | 35° 55.206' N | 121° 27.967' W | | |
| Camp | Sand Dollar | 35° 55.067' N | 121° 28.025' W | | |
| Camp | Seco Spike | 36° 14.132' N | 121° 28.615' W | | |
| Dip Site | Abbot Dip | 36° 13.860' N | 121° 28.950' W | | |
| Dip Site | Bridge Dip | 36° 10.700' N | 121° 30.440' W | | |
| Dip Site | Coleman Dip | 36° 00.040' N | 121° 15.721' W | | |
| Dip Site | Dempsy Dip | 35° 58.907' N | 121° 26.994' W | | |
| Dip Site | Hidden Dip | 36° 12.044' N | 121° 39.695' W | | |
| Dip Site | Mission Dip | 36° 04.952' N | 121° 16.953' W | | |
| Dip Site | Ocean Dip | 36° 00.350' N | 121° 31.461' W | | |
| Dip Site | Olympic Dip | 36° 10.167' N | 121° 31.003' W | | |
| Dip Site | Ranch Dip | 36° 04.140' N | 121° 23.248' W | | |
| Dip Site | Seco Dip | 36° 08.280' N | 121° 29.680' W | | |
| Dip Site | VOR Dip | 36° 09.720' N | 121° 35.130' W | | |
| Drop Point | DP-10 | 36° 09.582' N | 121° 40.164' W | | |
| Drop Point | DP-11 | 36° 07.038' N | 121° 37.804' W | | |
| Drop Point | DP-12 | 36° 11.388' N | 121° 42.434' W | | |
| Drop Point | DP-13 | 36° 12.700' N | 121° 41.781' W | | |
| Drop Point | DP-14 | 36° 12.567' N | 121° 41.149' W | | |
| Drop Point | DP-15 | 36° 12.012' N | 121° 40.081' W | | |
| Drop Point | DP-16 | 36° 11.586' N | 121° 39.615' W | | |
| Drop Point | DP-17 | 36° 11.433' N | 121° 39.519' W | | |
| Drop Point | DP-31 | 36° 14.040' N | 121° 29.193' W | | |
| Drop Point | DP-53 | 36° 01.236' N | 121° 33.109' W | | |
| Drop Point | DP-54 | 36° 01.186' N | 121° 32.393' W | | |
| Drop Point | DP-55 | 36° 01.557' N | 121° 32.133' W | | |
| Drop Point | DP-56 | 35° 59.330' N | 121° 29.644' W | | |
| Drop Point | DP-57 | 36° 00.588' N | 121° 27.174' W | | |
| Drop Point | DP-58 | 35° 58.297' N | 121° 26.499' W | | |
| Drop Point | DP-59 | 36° 00.593' N | 121° 31.100' W | | |
| Drop Point | DP-60 | 36° 05.690' N | 121° 25.379' W | | |
| Drop Point | DP-61 | 36° 00.807' N | 121° 24.731' W | | |
| Drop Point | DP-62 | 35° 58.962' N | 121° 27.054' W | | |
| Drop Point | DP-63 | 35° 59.410' N | 121° 21.841' W | | |
| Drop Point | DP-64 | 35° 54.418' N | 121° 21.841' W | | |
| Drop Point | DP-65 | 35° 59.008' N | 121° 28.245' W | | |
| Drop Point | DP-66 | 35° 58.302' N | 121° 19.408' W | | |
| Drop Point | DP-67 | 35° 58.087' N | 121° 22.724' W | | |
| Drop Point | DP-68 | 36° 01.515' N | 121° 17.328' W | | |
| Drop Point | DP-69 | 35° 57.713' N | 121° 25.623' W | | |
| Drop Point | DP-70 | 36° 04.349' N | 121° 11.869' W | | |
| Drop Point | DP-71 | 36° 04.639' N | 121° 16.959' W | | |
| Drop Point | DP-72 | 36° 03.711' N | 121° 18.100' W | | |
| Drop Point | DP-73 | 36° 06.610' N | 121° 14.741' W | | |
| Drop Point | DP-74 | 36° 07.543' N | 121° 15.842' W | | |
| Drop Point | DP-75 | 36° 00.004' N | 121° 15.268' W | | |
| Drop Point | DP-76 | 36° 04.392' N | 121° 21.014' W | | |
| Drop Point | DP-77 | 36° 11.073' N | 121° 17.640' W | | |
| Drop Point | DP-8 | 36° 10.170' N | 121° 41.076' W | | |
| Drop Point | DP-83 | 36° 15.435' N | 121° 25.378' W | | |
| Drop Point | DP-85 | 35° 53.807' N | 121° 27.596' W | | |
| Drop Point | DP-9 | 36° 13.743' N | 121° 45.879' W | | |
| Helibase | Gruber MRB | 36° 14.637' N | 121° 25.934' W | | |
| Helibase | Seco Helitorch Base | 36° 13.820' N | 121° 27.930' W | | |
| Helibase | Tusi Helibase | 35° 59.687' N | 121° 14.202' W | | |
| Helispot | H-1 | 36° 11.445' N | 121° 41.963' W | | |
| Helispot | H-2 | 36° 10.780' N | 121° 40.500' W | Elev=2500', needs dust abatement | |
| Helispot | H-3 | 36° 10.600' N | 121° 37.870' W | Elev=3600', needs dust abatement | DIV F |
| Helispot | H-4 | 36° 09.201' N | 121° 33.711' W | | |
| Helispot | H-5 | 36° 16.460' N | 121° 46.230' W | | |
| Helispot | H-51 | 36° 03.270' N | 121° 32.220' W | Approved for Type 2, Elev 3500', needs dust abatement | DIV Z |
| Helispot | H-52 | 36° 00.710' N | 121° 27.560' W | "Cone Peak", Elev=2600', needs dust abatement | |
| Helispot | H-53 | 36° 03.124' N | 121° 29.770' W | | |
| Helispot | H-54 | 35° 58.290' N | 121° 27.191' W | | |
| Helispot | H-55 | 35° 58.000' N | 121° 23.601' W | Elev=3250' Type 2, Hill Top, Road access | |
| Helispot | H-56 | 35° 57.600' N | 121° 15.571' W | Elev=1500' Mult Type 2, grass field, Close Rod, FHL Restricted Area | DIV W |
| Helispot | H-6 | 36° 10.408' N | 121° 32.376' W | Near Olympic Dip | Div O |
| Helispot | H-60 | 36° 14.155' N | 121° 28.813' W | Arroyo Seco Helispot. Elev=885' | DIV O |
| Helispot | H-61 | 36° 14.935' N | 121° 28.530' W | 2,000' dust abatement type 2 | DIV O |
| Helispot | H-62 | 36° 15.623' N | 121° 29.343' W | 2,800' dust abate | DIV O |
| Helispot | H-63 | 36° 16.160' N | 121° 28.760' W | | |
| Helispot | PV-Helispot | 35° 55.957' N | 121° 28.158' W | Approved for Type 3 | |
| Landmark | Arroyo Seco Trail | 36° 06.942' N | 121° 28.945' W | | |
| Landmark | Cold Springs | 36° 12.715' N | 121° 40.840' W | | |
| Landmark | Marble Peak Trail | 36° 12.590' N | 121° 32.169' W | | |
| Landmark | Memorial Campground | 36° 07.201' N | 121° 28.012' W | | |
| Landmark | Rodeo Flat Trail | 36° 07.073' N | 121° 31.308' W | | |
| Landmark | South Fork Trail | 36° 12.659' N | 121° 38.022' W | | |
| Landmark | Strawberry | 36° 12.299' N | 121° 36.141' W | | |
| Landmark | Tan Oak | 36° 11.523' N | 121° 36.333' W | | |
| Landmark | Tassajara Camp | 36° 13.480' N | 121° 30.991' W | | |
| Landmark | Tassajara Mtn Center | 36° 14.045' N | 121° 32.995' W | | |
| Landmark | Tony Trail | 36° 13.634' N | 121° 33.089' W | | |
| Landmark | Willow | 36° 12.461' N | 121° 34.005' W | | |
| Repeater | Base Camp Repeater | 36° 15.206' N | 121° 47.024' W | | |
| Repeater | C-1 | 36° 10.870' N | 121° 38.630' W | | |
| Repeater | C-34 | 36° 18.267' N | 121° 33.951' W | | |
| Repeater | C-41 | 36° 08.760' N | 121° 25.180' W | | |
| Repeater | C-47 | 36° 03.100' N | 121° 29.730' W | | |
| Repeater | CMD-6 | 36° 10.138' N | 121° 22.769' W | | |
| Repeater | L-1 | 36° 16.380' N | 121° 46.260' W | | |
| Sling Site | | 36° 01.074' N | 121° 28.614' W | | |
| Sling Site | | 36° 01.074' N | 121° 28.613' W | | |
| Sling Site | | 36° 00.754' N | 121° 29.818' W | | |
| Sling Site | | 36° 00.754' N | 121° 30.082' W | | |
| Sling Site | | 36° 00.645' N | 121° 30.521' W | | |
| Water Development or Draft Site | | 36° 00.584' N | 121° 31.107' W | | |
| Water Development or Draft Site | | 36° 00.605' N | 121° 31.117' W | | |
| Water Development or Draft Site | | 36° 00.105' N | 121° 28.314' W | | |

| Name | Lat | Long | Notes | Division |
|----------------|-------------|--------------|---|----------|
| Herimane Pond | 36° 01.453' | 121° 32.260' | Type II needs approval | |
| Contingency | 36° 02.550' | 121° 33.841' | Elev=2403' | |
| Proposed 1 | 36° 10.458' | 121° 37.755' | Marble Peak, Unapproved, Elev=4031' | DIV F |
| Proposed 2 | 36° 11.133' | 121° 39.857' | Unapproved | DIV F |
| Junipero Serra | 36° 08.696' | 121° 25.139' | Not yet on Operations/Pilot Mpsps | |
| Unapproved | 36° 08.232' | 121° 24.362' | Looking for manager to potentially approve as of 9/25 | |
| Unapproved | 36° 08.425' | 121° 23.828' | Looking for manager to potentially approve as of 9/25 | |