



Point Type	Name	Latitude	Longitude
Camp	Plaskett	35° 55.067' N	121° 28.025' W
Camp	Seco Spike	36° 14.132' N	121° 28.615' W
Camp	Mission Spike	35° 58.075' N	121° 10.685' W
Drop Point	DP-9	36° 13.743' N	121° 45.879' W
Drop Point	DP-11	36° 07.038' N	121° 37.804' W
Drop Point	DP-10	36° 09.582' N	121° 40.164' W
Drop Point	DP-12	36° 11.388' N	121° 42.434' W
Drop Point	DP-53	36° 01.236' N	121° 33.109' W
Drop Point	DP-54	36° 01.186' N	121° 32.393' W
Drop Point	DP-55	36° 01.557' N	121° 32.133' W
Drop Point	DP-13	36° 12.700' N	121° 41.781' W
Drop Point	DP-14	36° 12.567' N	121° 41.149' W
Drop Point	DP-15	36° 12.012' N	121° 40.081' W
Drop Point	DP-17	36° 11.433' N	121° 39.519' W
Drop Point	DP-57	36° 00.588' N	121° 27.174' W
Drop Point	DP-56	35° 59.330' N	121° 29.644' W
Drop Point	DP-16	36° 11.586' N	121° 39.615' W
Drop Point	DP-8	36° 10.170' N	121° 41.076' W
Drop Point	DP-58	35° 58.297' N	121° 26.499' W
Drop Point	DP-72	36° 03.711' N	121° 18.100' W
Drop Point	DP-59	36° 00.593' N	121° 31.100' W
Drop Point	DP-60	36° 05.690' N	121° 25.379' W
Drop Point	DP-70	36° 04.349' N	121° 11.869' W
Drop Point	DP-64	35° 54.418' N	121° 21.841' W
Drop Point	DP-61	36° 00.807' N	121° 24.731' W
Drop Point	DP-62	35° 58.962' N	121° 27.054' W
Drop Point	DP-63	35° 59.410' N	121° 21.841' W
Drop Point	DP-31	36° 14.040' N	121° 29.193' W
Drop Point	DP-65	35° 59.008' N	121° 28.245' W
Drop Point	DP-71	36° 04.639' N	121° 16.959' W
Drop Point	DP-73	36° 06.610' N	121° 14.741' W
Drop Point	DP-66	35° 58.302' N	121° 19.408' W
Drop Point	DP-74	36° 07.543' N	121° 15.842' W
Drop Point	DP-77	36° 11.073' N	121° 17.640' W
Drop Point	DP-85	35° 53.807' N	121° 27.596' W
Drop Point	DP-69	35° 57.713' N	121° 25.623' W
Drop Point	DP-83	36° 15.435' N	121° 25.378' W
Drop Point	DP-67	35° 58.087' N	121° 22.724' W
Drop Point	DP-68	36° 01.515' N	121° 17.328' W
Drop Point	DP-75	36° 00.004' N	121° 15.268' W
Drop Point	DP-76	36° 04.392' N	121° 21.014' W
Helispot	H-1	36° 11.445' N	121° 41.963' W
Helispot	PV-Helispot	35° 55.957' N	121° 28.158' W
Helispot	H-51	36° 03.270' N	121° 32.220' W
Helispot	H-52	36° 00.710' N	121° 27.560' W
Helispot	H-2	36° 10.780' N	121° 40.500' W
Helispot	H-3	36° 10.600' N	121° 37.870' W
Helispot	H-4	36° 09.201' N	121° 33.711' W
Helispot	H-53	36° 03.124' N	121° 29.770' W
Helispot	H-5	36° 16.460' N	121° 46.230' W
Helispot	H-54	35° 58.290' N	121° 27.191' W
Helispot	H-60	36° 14.155' N	121° 28.813' W
Helispot	H-56	35° 57.600' N	121° 15.571' W
Helispot	H-55	35° 58.000' N	121° 23.601' W
Helispot	H-63	36° 16.160' N	121° 28.760' W
Helispot	H-62	36° 15.623' N	121° 29.343' W
Helispot	H-61	36° 14.935' N	121° 28.530' W
Helispot	H-6	36° 10.408' N	121° 32.376' W
Ranch	Merle Ranch	36° 4.090' N	121° 21.435' W

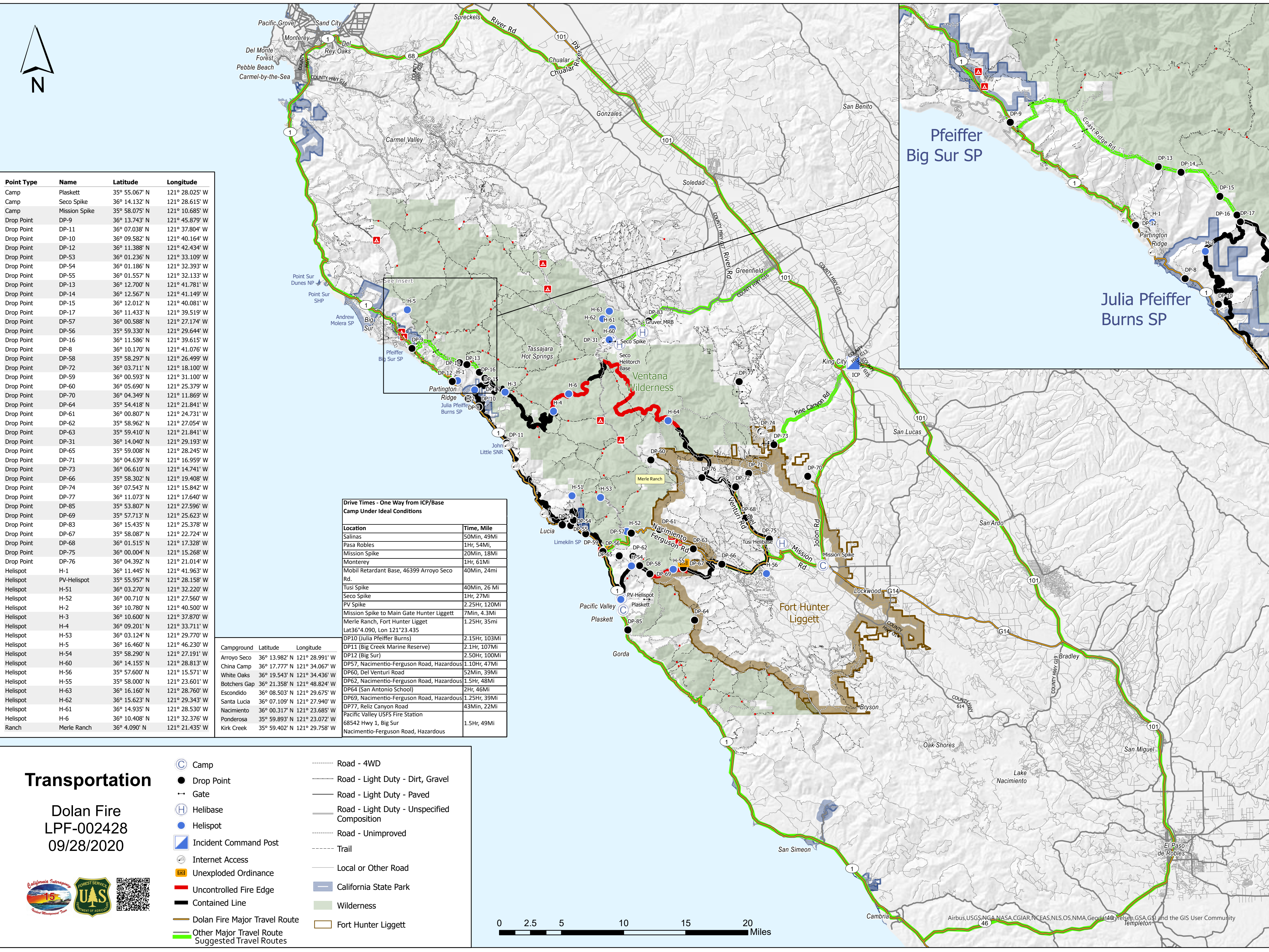
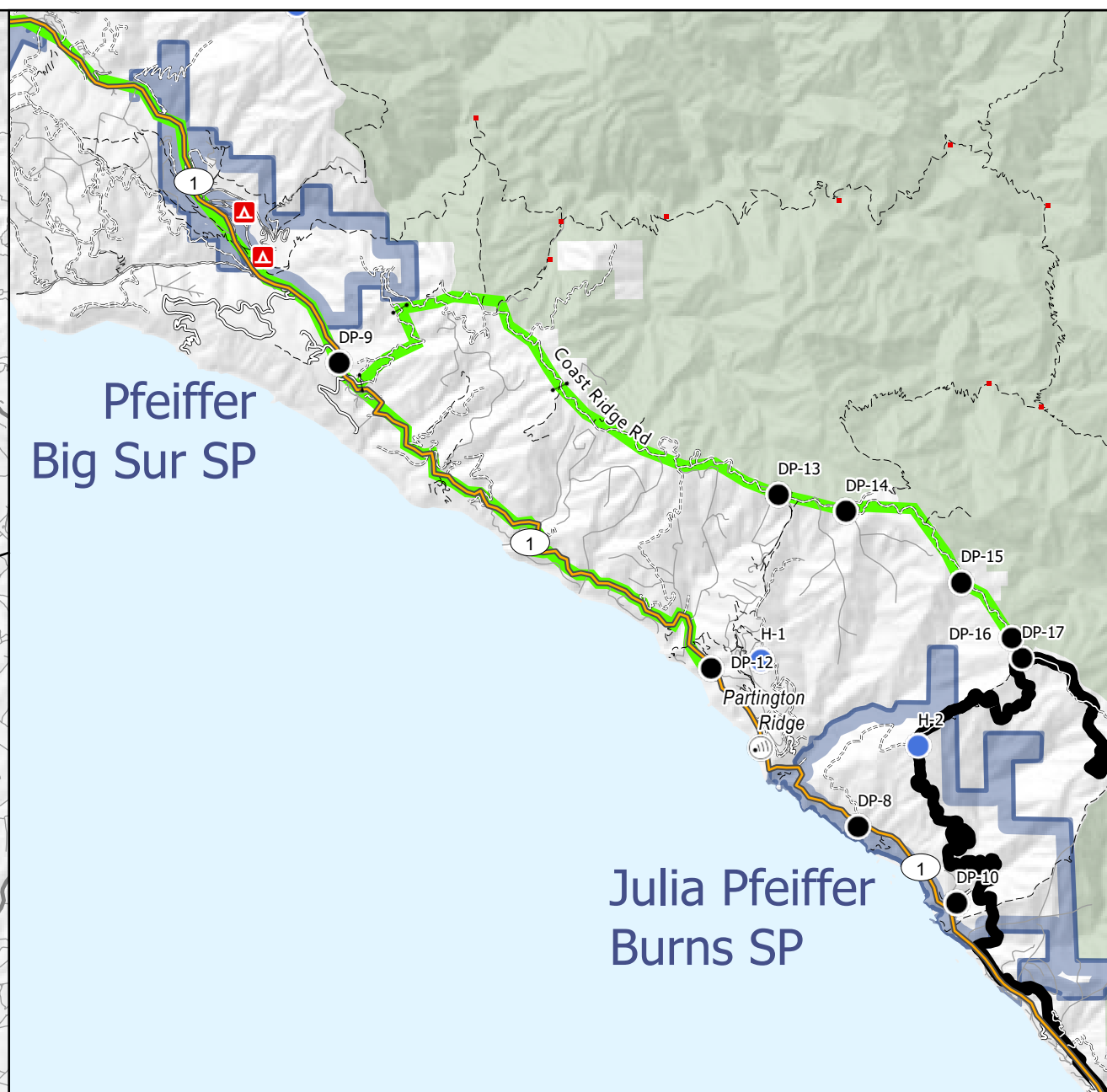
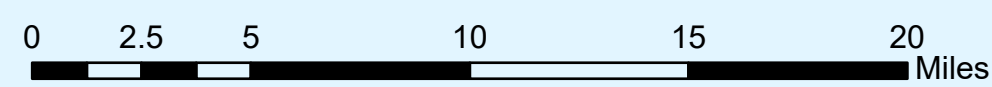
Location	Time, Mile
Salinas	50Min, 49Mi
Pasa Robles	1Hr, 54Mi
Mission Spike	20Min, 18Mi
Monterey	1Hr, 61Mi
Mobil Retardant Base, 46399 Arroyo Seco Rd.	40Min, 24mi
Tusi Spike	40Min, 26 Mi
Seco Spike	1Hr, 27Mi
PV Spike	2.25Hr, 120Mi
Mission Spike to Main Gate Hunter Liggett	7Min, 4.3Mi
Merle Ranch, Fort Hunter Liggett	1.25Hr, 35mi
Lat36°4.090, Lon 121°23.435	
DP10 (Julia Pfeiffer Burns)	2.15Hr, 103Mi
DP11 (Big Creek Marine Reserve)	2.1Hr, 107Mi
DP12 (Big Sur)	2.50Hr, 100Mi
DP57, Nacimiento-Ferguson Road, Hazardous	1.10Hr, 47Mi
DP60, Del Venturi Road	52Min, 39Mi
DP62, Nacimiento-Ferguson Road, Hazardous	1.5Hr, 48Mi
DP64 (San Antonio School)	2Hr, 46Mi
DP69, Nacimiento-Ferguson Road, Hazardous	1.25Hr, 39Mi
DP77, Reliz Canyon Road	43Min, 22Mi
Pacific Valley USFS Fire Station	
68542 Hwy 1, Big Sur	1.5Hr, 49Mi
Nacimiento-Ferguson Road, Hazardous	

Campground	Latitude	Longitude
Arroyo Seco	36° 13.982' N	121° 28.991' W
China Camp	36° 17.777' N	121° 34.067' W
White Oaks	36° 19.543' N	121° 34.436' W
Botchers Gap	36° 21.358' N	121° 48.824' W
Escondido	36° 08.503' N	121° 29.675' W
Santa Lucia	36° 07.109' N	121° 27.940' W
Nacimiento	36° 00.317' N	121° 23.685' W
Ponderosa	35° 59.893' N	121° 23.072' W
Kirk Creek	35° 59.402' N	121° 29.758' W

Transportation

Dolan Fire
LPF-002428
09/28/2020

- Camp
- Drop Point
- Gate
- Helibase
- Helispot
- Incident Command Post
- Internet Access
- Unexploded Ordinance
- Uncontrolled Fire Edge
- Contained Line
- Dolan Fire Major Travel Route
- Other Major Travel Route Suggested Travel Routes
- Road - 4WD
- Road - Light Duty - Dirt, Gravel
- Road - Light Duty - Paved
- Road - Light Duty - Unspecified Composition
- Road - Unimproved
- Trail
- Local or Other Road
- California State Park
- Wilderness
- Fort Hunter Liggett



Airbus, USGS, NGA, NASA, CGIAR, NCEAS, NLS, OS, NMA, Geod448, Pelson, GSA, GSI and the GIS User Community