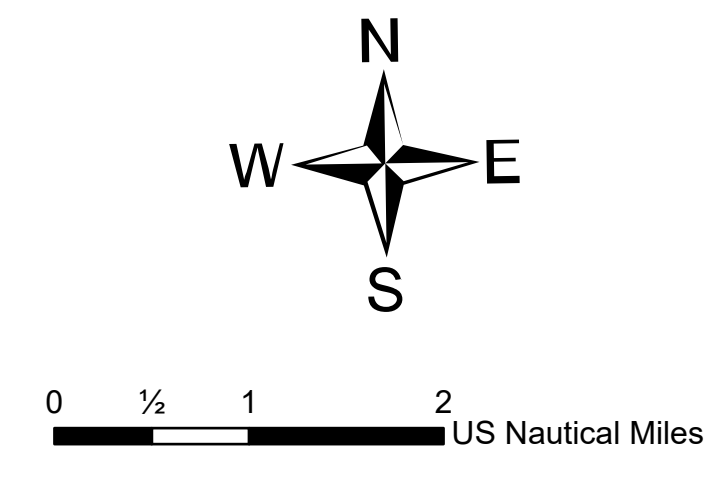


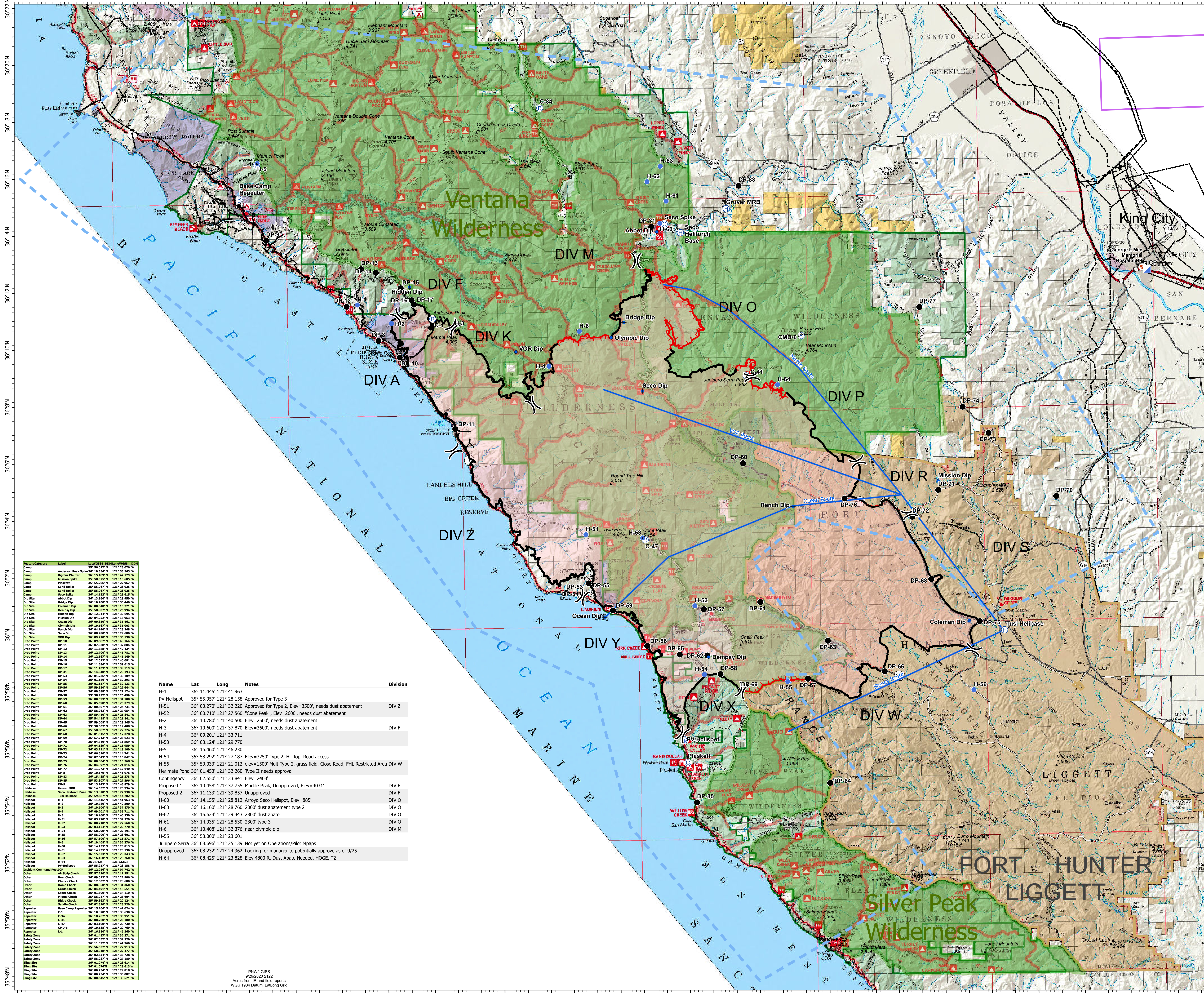
Air Ops

Dolan Fire
CA-LPF-002428
9/30/2020

124,924 acres at 9/28/2020 2000 hrs



- Air Ops Routes
- Retardant Avoidance
- Powerline
- Telephone wires
- ▲ Peak
- Helispot
- Camp
- + Dip Site
- Drop Point
- ⊕ Helibase
- ⊠ Incident Command Post
- Ⓡ Repeater
- ⊕ Hospital
- Uncontrolled Fire Edge
- Contained Line
- Temporary Flight Restriction Frequency 127.025 <= 10,000' MSL
- Wildfire Daily Fire Perimeter
- Wilderness
- Fort Hunter Liggett
- Event Point**
- Helispot
- Aerial Hazard
- ⊕ Aerial Ignition
- ⊠ Airstrip or Airport
- ⊠ Bridge
- ⊠ Camp
- Clean Up Area
- × Closure
- Culvert
- + Dip Site
- Drop Point
- ⊠ Dozer Push
- ⊠ Fence - Cut/Damaged
- ⊠ Fire Origin
- ⊠ Fire Station
- ⊠ First Aid Station
- Gate
- ⊠ Hazard
- ⊠ Hazard Tree
- ⊠ Helibase
- ⊠ Unimproved Landing Area
- Hot Spot
- ⊠ Incident Base
- ⊠ Incident Command Post
- ⊠ Internet Access
- ⊠ Landmark
- ⊠ Landing or Log Deck
- ⊠ Lookout
- ⊠ Mobile Weather Unit
- Repair Point



Feature Category	Label	Lat	Long	Notes	Division
Camp	Anderson Peak Spike	36° 56.037' N	121° 28.090' W		
Camp	Big Sun Pile	36° 15.189' N	121° 47.227' W		
Camp	Hidden Spike	36° 56.027' N	121° 58.020' W		
Camp	Plasquet	36° 55.205' N	121° 57.967' W		
Camp	Sand Dollar	36° 55.067' N	121° 58.020' W		
Camp	Sand Dollar	36° 55.067' N	121° 58.020' W		
Dip Site	Abbot Dip	36° 13.869' N	121° 58.950' W		
Dip Site	Colman Dip	36° 00.049' N	121° 55.721' W		
Dip Site	Hidden Dip	36° 12.044' N	121° 59.695' W		
Dip Site	Ocean Dip	36° 00.350' N	121° 51.461' W		
Dip Site	Ranch Dip	36° 04.149' N	121° 52.248' W		
Dip Site	VOR Dip	36° 09.729' N	121° 51.130' W		
Drop Point	DP-11	36° 07.038' N	121° 37.804' W		
Drop Point	DP-12	36° 11.300' N	121° 50.240' W		
Drop Point	DP-13	36° 12.700' N	121° 41.781' W		
Drop Point	DP-14	36° 12.567' N	121° 46.816' W		
Drop Point	DP-15	36° 12.012' N	121° 40.081' W		
Drop Point	DP-16	36° 11.560' N	121° 39.620' W		
Drop Point	DP-17	36° 11.433' N	121° 39.511' W		
Drop Point	DP-18	36° 11.560' N	121° 39.620' W		
Drop Point	DP-19	36° 11.072' N	121° 32.220' W		
Drop Point	DP-20	36° 05.513' N	121° 52.220' W		
Drop Point	DP-21	36° 05.513' N	121° 52.220' W		
Drop Point	DP-22	36° 04.639' N	121° 51.860' W		
Drop Point	DP-23	36° 03.713' N	121° 46.100' W		
Drop Point	DP-24	36° 03.713' N	121° 46.100' W		
Drop Point	DP-25	36° 01.507' N	121° 32.133' W		
Drop Point	DP-26	36° 05.690' N	121° 52.624' W		
Drop Point	DP-27	36° 05.690' N	121° 52.624' W		
Drop Point	DP-28	36° 05.690' N	121° 52.624' W		
Drop Point	DP-29	36° 05.690' N	121° 52.624' W		
Drop Point	DP-30	36° 05.690' N	121° 52.624' W		
Drop Point	DP-31	36° 05.690' N	121° 52.624' W		
Drop Point	DP-32	36° 05.690' N	121° 52.624' W		
Drop Point	DP-33	36° 05.690' N	121° 52.624' W		
Drop Point	DP-34	36° 05.690' N	121° 52.624' W		
Drop Point	DP-35	36° 05.690' N	121° 52.624' W		
Drop Point	DP-36	36° 05.690' N	121° 52.624' W		
Drop Point	DP-37	36° 05.690' N	121° 52.624' W		
Drop Point	DP-38	36° 05.690' N	121° 52.624' W		
Drop Point	DP-39	36° 05.690' N	121° 52.624' W		
Drop Point	DP-40	36° 05.690' N	121° 52.624' W		
Drop Point	DP-41	36° 05.690' N	121° 52.624' W		
Drop Point	DP-42	36° 05.690' N	121° 52.624' W		
Drop Point	DP-43	36° 05.690' N	121° 52.624' W		
Drop Point	DP-44	36° 05.690' N	121° 52.624' W		
Drop Point	DP-45	36° 05.690' N	121° 52.624' W		
Drop Point	DP-46	36° 05.690' N	121° 52.624' W		
Drop Point	DP-47	36° 05.690' N	121° 52.624' W		
Drop Point	DP-48	36° 05.690' N	121° 52.624' W		
Drop Point	DP-49	36° 05.690' N	121° 52.624' W		
Drop Point	DP-50	36° 05.690' N	121° 52.624' W		
Drop Point	DP-51	36° 05.690' N	121° 52.624' W		
Drop Point	DP-52	36° 05.690' N	121° 52.624' W		
Drop Point	DP-53	36° 05.690' N	121° 52.624' W		
Drop Point	DP-54	36° 05.690' N	121° 52.624' W		
Drop Point	DP-55	36° 05.690' N	121° 52.624' W		
Drop Point	DP-56	36° 05.690' N	121° 52.624' W		
Drop Point	DP-57	36° 05.690' N	121° 52.624' W		
Drop Point	DP-58	36° 05.690' N	121° 52.624' W		
Drop Point	DP-59	36° 05.690' N	121° 52.624' W		
Drop Point	DP-60	36° 05.690' N	121° 52.624' W		
Drop Point	DP-61	36° 05.690' N	121° 52.624' W		
Drop Point	DP-62	36° 05.690' N	121° 52.624' W		
Drop Point	DP-63	36° 05.690' N	121° 52.624' W		
Drop Point	DP-64	36° 05.690' N	121° 52.624' W		
Drop Point	DP-65	36° 05.690' N	121° 52.624' W		
Drop Point	DP-66	36° 05.690' N	121° 52.624' W		
Drop Point	DP-67	36° 05.690' N	121° 52.624' W		
Drop Point	DP-68	36° 05.690' N	121° 52.624' W		
Drop Point	DP-69	36° 05.690' N	121° 52.624' W		
Drop Point	DP-70	36° 05.690' N	121° 52.624' W		
Drop Point	DP-71	36° 05.690' N	121° 52.624' W		
Drop Point	DP-72	36° 05.690' N	121° 52.624' W		
Drop Point	DP-73	36° 05.690' N	121° 52.624' W		
Drop Point	DP-74	36° 05.690' N	121° 52.624' W		
Drop Point	DP-75	36° 05.690' N	121° 52.624' W		
Drop Point	DP-76	36° 05.690' N	121° 52.624' W		
Drop Point	DP-77	36° 05.690' N	121° 52.624' W		
Drop Point	DP-78	36° 05.690' N	121° 52.624' W		
Drop Point	DP-79	36° 05.690' N	121° 52.624' W		
Drop Point	DP-80	36° 05.690' N	121° 52.624' W		
Drop Point	DP-81	36° 05.690' N	121° 52.624' W		
Drop Point	DP-82	36° 05.690' N	121° 52.624' W		
Drop Point	DP-83	36° 05.690' N	121° 52.624' W		
Drop Point	DP-84	36° 05.690' N	121° 52.624' W		
Drop Point	DP-85	36° 05.690' N	121° 52.624' W		
Drop Point	DP-86	36° 05.690' N	121° 52.624' W		
Drop Point	DP-87	36° 05.690' N	121° 52.624' W		
Drop Point	DP-88	36° 05.690' N	121° 52.624' W		
Drop Point	DP-89	36° 05.690' N	121° 52.624' W		
Drop Point	DP-90	36° 05.690' N	121° 52.624' W		
Drop Point	DP-91	36° 05.690' N	121° 52.624' W		
Drop Point	DP-92	36° 05.690' N	121° 52.624' W		
Drop Point	DP-93	36° 05.690' N	121° 52.624' W		
Drop Point	DP-94	36° 05.690' N	121° 52.624' W		
Drop Point	DP-95	36° 05.690' N	121° 52.624' W		
Drop Point	DP-96	36° 05.690' N	121° 52.624' W		
Drop Point	DP-97	36° 05.690' N	121° 52.624' W		
Drop Point	DP-98	36° 05.690' N	121° 52.624' W		
Drop Point	DP-99	36° 05.690' N	121° 52.624' W		
Drop Point	DP-100	36° 05.690' N	121° 52.624' W		
Drop Point	DP-101	36° 05.690' N	121° 52.624' W		
Drop Point	DP-102	36° 05.690' N	121° 52.624' W		
Drop Point	DP-103	36° 05.690' N	121° 52.624' W		
Drop Point	DP-104	36° 05.690' N	121° 52.624' W		
Drop Point	DP-105	36° 05.690' N	121° 52.624' W		
Drop Point	DP-106	36° 05.690' N	121° 52.624' W		
Drop Point	DP-107	36° 05.690' N	121° 52.624' W		
Drop Point	DP-108	36° 05.690' N	121° 52.624' W		
Drop Point	DP-109	36° 05.690' N	121° 52.624' W		
Drop Point	DP-110	36° 05.690' N	121° 52.624' W		
Drop Point	DP-111	36° 05.690' N	121° 52.624' W		
Drop Point	DP-112	36° 05.690' N	121° 52.624' W		
Drop Point	DP-113	36° 05.690' N	121° 52.624' W		
Drop Point	DP-114	36° 05.690' N	121° 52.624' W		
Drop Point	DP-115	36° 05.690' N	121° 52.624' W		
Drop Point	DP-116	36° 05.690' N	121° 52.624' W		
Drop Point	DP-117	36° 05.690' N	121° 52.624' W		
Drop Point	DP-118	36° 05.690' N	121° 52.624' W		
Drop Point	DP-119	36° 05.690' N	121° 52.624' W		
Drop Point	DP-120	36° 05.690' N	121° 52.624' W		
Drop Point	DP-121	36° 05.690' N	121° 52.624' W		
Drop Point	DP-122	36° 05.690' N	121° 52.624' W		
Drop Point	DP-123	36° 05.690' N	121° 52.624' W		
Drop Point	DP-124	36° 05.690' N	121° 52.624' W		
Drop Point	DP-125	36° 05.690' N	121° 52.624' W		
Drop Point	DP-126	36° 05.690' N	121° 52.624' W		
Drop Point	DP-127	36° 05.690' N	121° 52.624' W		
Drop Point	DP-128	36° 05.690' N	121° 52.624' W		
Drop Point	DP-129	36° 05.690' N	121° 52.624' W		
Drop Point	DP-130	36° 05.690' N	121° 52.624' W		
Drop Point	DP-131	36° 05.690' N	121° 52.624' W		
Drop Point	DP-132	36° 05.690' N	121° 52.624' W		
Drop Point	DP-133	36° 05.690' N	121° 52.624' W		
Drop Point	DP-134	36° 05.690' N	121° 52.624' W		
Drop Point	DP-135	36° 05.690' N	121° 52.624' W		
Drop Point	DP-136	36° 05.690' N	121° 52.624' W		
Drop Point	DP-137	36° 05.690' N	121° 52.624' W		
Drop Point	DP-138	36° 05.690' N	121° 52.624' W		
Drop Point	DP-139	36° 05.690' N	121° 52.624' W		
Drop Point	DP-140	36° 05.690' N	121° 52.624' W		
Drop Point	DP-141	36° 05.690' N	121° 52.624' W		
Drop Point	DP-142	36° 05.690' N	121° 52.624' W		
Drop Point	DP-143	36° 05.690' N	121° 52.624' W		
Drop Point	DP-144	36° 05.690' N	121° 52.624' W		
Drop Point	DP-145	36° 05.690' N	121° 52.624' W		
Drop Point	DP-146	36° 05.690' N	121° 52.624' W		
Drop Point	DP-147	36° 05.690' N	121° 52.624' W		
Drop Point	DP-148	36° 05.690' N	121° 52.624' W		
Drop Point	DP-149	36° 05.690' N	121° 52.624' W		