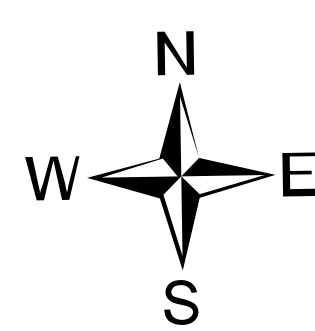


Air Ops

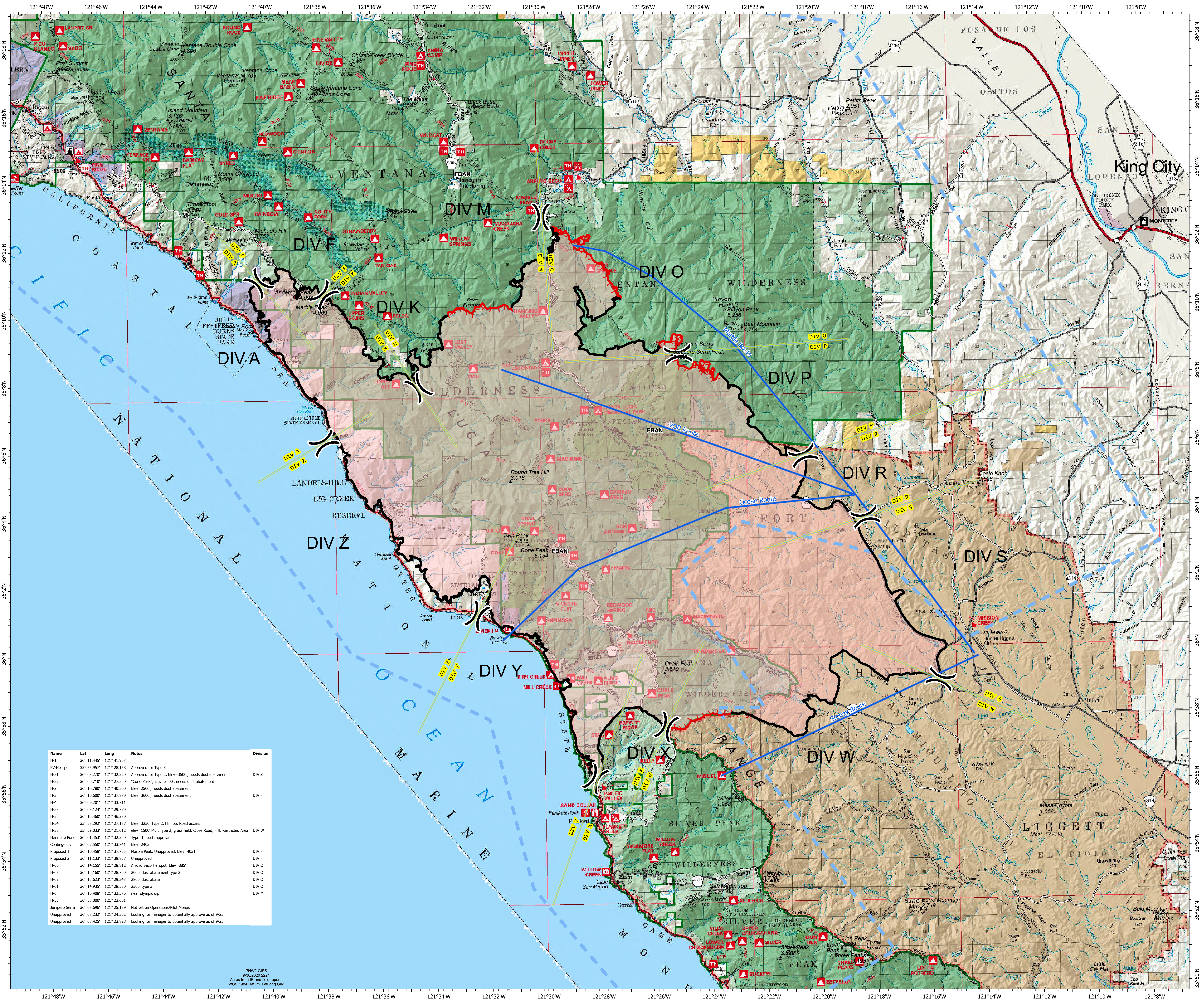
Dolan Fire
CA-LPF-002428
9/30/2020

124,924 acres at 9/28/2020 2000 hrs



0 1/2 1 2 US Nautical Miles

- Air Ops Routes
- ▲ Peak
- Uncontrolled Fire Edge
- Contained Line
- Temporary Flight Restriction
Frequency 127.025
≤ 10,000' MSL
- Wildfire Daily Fire Perimeter



Name	Lat	Long	Notes	Division
H-1	36° 11.445'	121° 41.963'		
PV-Hellspot	35° 55.957'	121° 28.158'	Approved for Type 3	
H-51	36° 03.270'	121° 32.220'	Approved for Type 2, Elev=3500', needs dust abatement	DIV Z
H-52	36° 00.710'	121° 27.560'	"Cone Peak", Elev=2600', needs dust abatement	
H-2	36° 10.780'	121° 40.500'	Elev=2500', needs dust abatement	
H-3	36° 10.600'	121° 37.870'	Elev=3600', needs dust abatement	DIV F
H-4	36° 09.201'	121° 33.711'		
H-53	36° 03.124'	121° 29.770'		
H-5	36° 16.460'	121° 46.230'		
H-54	35° 58.292'	121° 27.187'	Elev=3250' Type 2, Hill Top, Road access	
H-56	35° 59.033'	121° 21.012'	Elev=1500' Mult. Type 2, grass field, Close Road, FHL Restricted Area	DIV W
Helimite Pond	36° 01.453'	121° 32.260'	Type II needs approval	
Contingency	36° 02.550'	121° 33.841'	Elev=2403'	
Proposed 1	36° 10.458'	121° 37.755'	Marble Peak, Unapproved, Elev=4031'	DIV F
Proposed 2	36° 11.133'	121° 39.857'	Unapproved	DIV F
H-60	36° 14.155'	121° 28.812'	Arroyo Seco Hellspot, Elev=885'	DIV O
H-63	36° 16.160'	121° 28.760'	2000' dust abatement type 2	DIV O
H-62	36° 15.623'	121° 29.343'	2800' dust abate	DIV O
H-61	36° 14.935'	121° 28.530'	2300' type 3	DIV O
H-6	36° 10.408'	121° 32.376'	near olympic dip	DIV M
H-55	36° 58.000'	121° 23.601'		
Junipero Sierra	36° 08.696'	121° 25.139'	Not yet on Operations/Pilot Mapps	
Unapproved	36° 08.232'	121° 24.362'	Looking for manager to potentially approve as of 9/25	
Unapproved	36° 08.425'	121° 23.828'	Looking for manager to potentially approve as of 9/25	



PNW2 GISS
9/30/2020 2224
Acres from IR and field reports
WGS 1984 Datum, Lat,Long Grid