



Point Type	Name	Latitude	Longitude
Camp	Plaskett	35° 55.067' N	121° 28.025' W
Camp	Seco Spike	36° 14.132' N	121° 28.615' W
Camp	Mission Spike	35° 58.075' N	121° 10.685' W
Drop Point	DP-9	36° 13.743' N	121° 45.879' W
Drop Point	DP-11	36° 07.038' N	121° 37.804' W
Drop Point	DP-10	36° 09.582' N	121° 40.164' W
Drop Point	DP-12	36° 11.388' N	121° 42.434' W
Drop Point	DP-53	36° 01.236' N	121° 33.109' W
Drop Point	DP-54	36° 01.186' N	121° 32.393' W
Drop Point	DP-55	36° 01.557' N	121° 32.133' W
Drop Point	DP-13	36° 12.700' N	121° 41.781' W
Drop Point	DP-14	36° 12.567' N	121° 41.149' W
Drop Point	DP-15	36° 12.012' N	121° 40.081' W
Drop Point	DP-17	36° 11.433' N	121° 39.519' W
Drop Point	DP-57	36° 00.588' N	121° 27.174' W
Drop Point	DP-56	35° 59.330' N	121° 29.644' W
Drop Point	DP-16	36° 11.586' N	121° 39.615' W
Drop Point	DP-8	36° 10.170' N	121° 41.076' W
Drop Point	DP-58	35° 58.297' N	121° 26.499' W
Drop Point	DP-72	36° 03.711' N	121° 18.100' W
Drop Point	DP-59	36° 00.593' N	121° 31.100' W
Drop Point	DP-60	36° 05.690' N	121° 25.379' W
Drop Point	DP-70	36° 04.349' N	121° 11.869' W
Drop Point	DP-64	35° 54.418' N	121° 21.841' W
Drop Point	DP-61	36° 00.807' N	121° 24.731' W
Drop Point	DP-62	35° 58.962' N	121° 27.054' W
Drop Point	DP-63	35° 59.410' N	121° 21.841' W
Drop Point	DP-31	36° 14.040' N	121° 29.193' W
Drop Point	DP-65	35° 59.008' N	121° 28.245' W
Drop Point	DP-71	36° 04.639' N	121° 16.959' W
Drop Point	DP-73	36° 06.610' N	121° 14.741' W
Drop Point	DP-66	35° 58.302' N	121° 19.408' W
Drop Point	DP-74	36° 07.543' N	121° 15.842' W
Drop Point	DP-77	36° 11.073' N	121° 17.640' W
Drop Point	DP-85	35° 53.807' N	121° 27.596' W
Drop Point	DP-69	35° 57.713' N	121° 25.623' W
Drop Point	DP-83	36° 15.435' N	121° 25.378' W
Drop Point	DP-67	35° 58.087' N	121° 22.724' W
Drop Point	DP-68	36° 01.515' N	121° 17.328' W
Drop Point	DP-75	36° 00.004' N	121° 15.268' W
Drop Point	DP-76	36° 04.392' N	121° 21.014' W
Helispot	H-1	36° 11.445' N	121° 41.963' W
Helispot	PV-Helispot	35° 55.957' N	121° 28.158' W
Helispot	H-51	36° 03.270' N	121° 32.220' W
Helispot	H-52	36° 00.710' N	121° 27.560' W
Helispot	H-2	36° 10.780' N	121° 40.500' W
Helispot	H-3	36° 10.600' N	121° 37.870' W
Helispot	H-4	36° 09.201' N	121° 33.711' W
Helispot	H-53	36° 03.124' N	121° 29.770' W
Helispot	H-5	36° 16.460' N	121° 46.230' W
Helispot	H-54	35° 58.290' N	121° 27.191' W
Helispot	H-60	36° 14.155' N	121° 28.813' W
Helispot	H-56	35° 57.600' N	121° 15.571' W
Helispot	H-55	35° 58.000' N	121° 23.601' W
Helispot	H-63	36° 16.160' N	121° 28.760' W
Helispot	H-62	36° 15.623' N	121° 29.343' W
Helispot	H-61	36° 14.935' N	121° 28.530' W
Helispot	H-6	36° 10.408' N	121° 32.376' W
Ranch	Merle Ranch	36° 4.090' N	121° 21.435' W

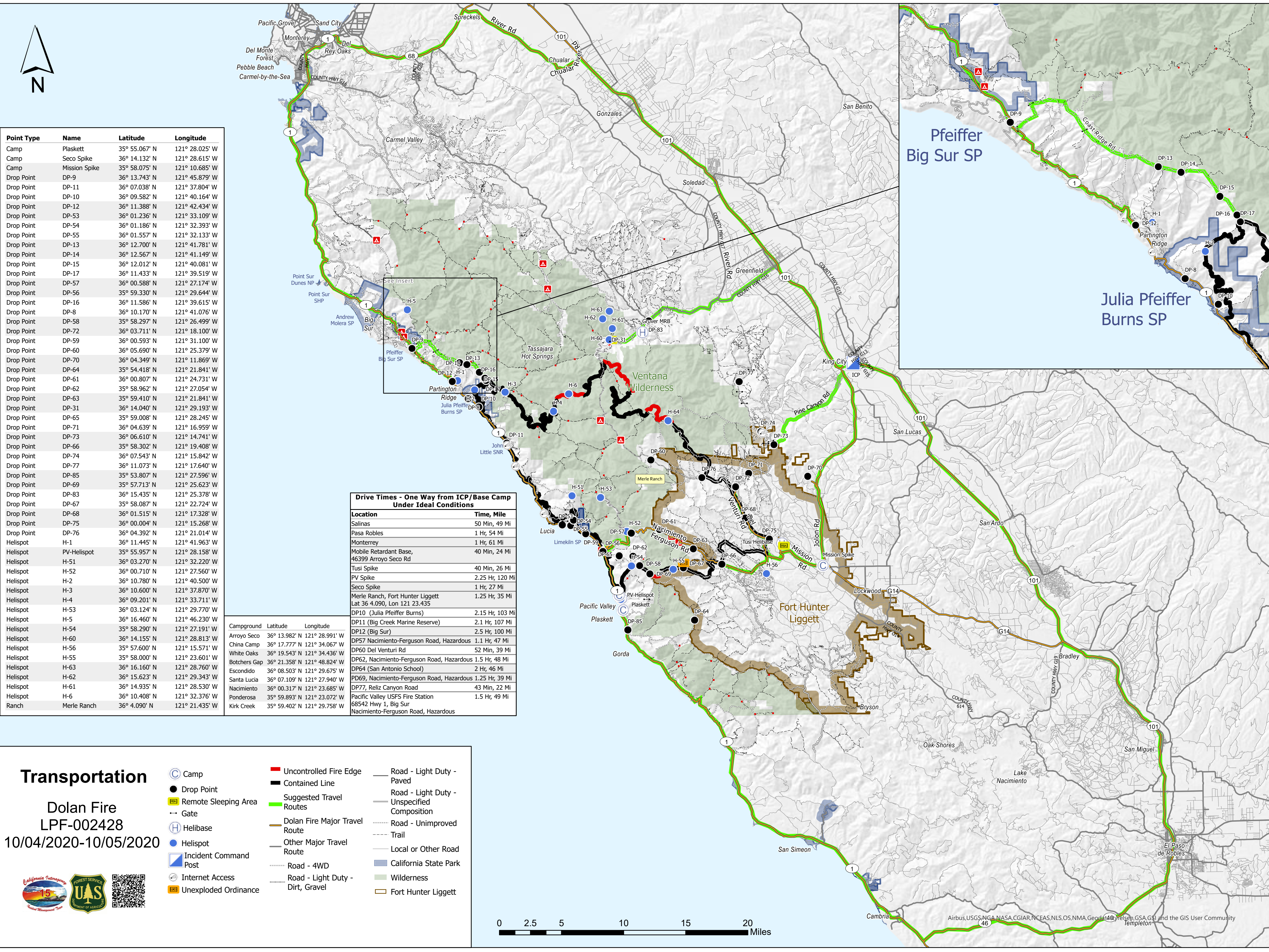
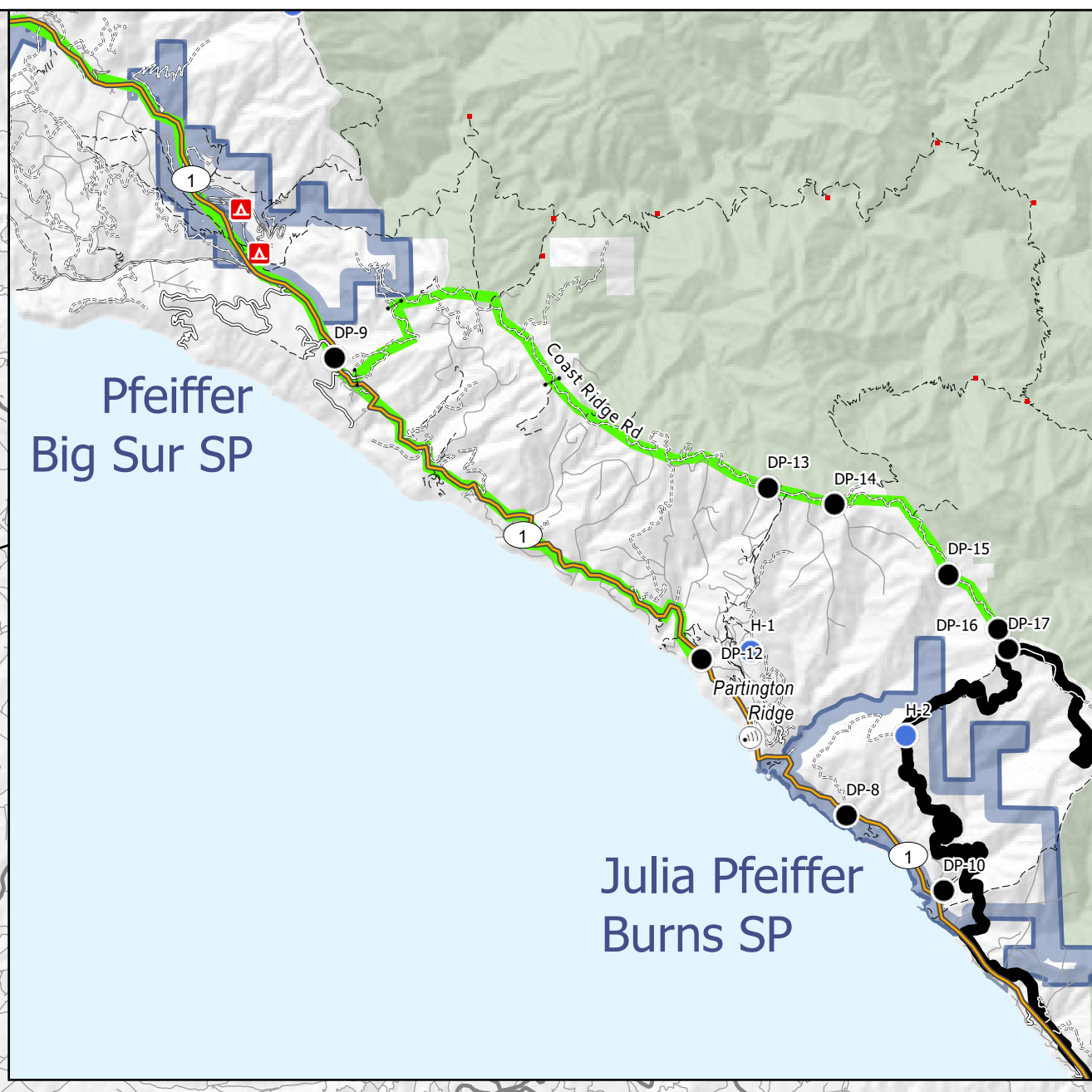
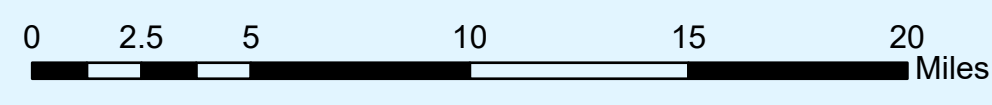
Drive Times - One Way from ICP/Base Camp Under Ideal Conditions	
Location	Time, Mile
Salinas	50 Min, 49 Mi
Pasa Robles	1 Hr, 54 Mi
Monterrey	1 Hr, 61 Mi
Mobile Retardant Base, 46399 Arroyo Seco Rd	40 Min, 24 Mi
Tusi Spike	40 Min, 26 Mi
PV Spike	2.25 Hr, 120 Mi
Seco Spike	1 Hr, 27 Mi
Merle Ranch, Fort Hunter Liggett Lat 36 4.090, Lon 121 23.435	1.25 Hr, 35 Mi
DP10 (Julia Pfeiffer Burns)	2.15 Hr, 103 Mi
DP11 (Big Creek Marine Reserve)	2.1 Hr, 107 Mi
DP12 (Big Sur)	2.5 Hr, 100 Mi
DP57 Nacimiento-Ferguson Road, Hazardous	1.1 Hr, 47 Mi
DP60 Del Venturi Rd	52 Min, 39 Mi
DP62, Nacimiento-Ferguson Road, Hazardous	1.5 Hr, 48 Mi
DP64 (San Antonio School)	2 Hr, 46 Mi
PD69, Nacimiento-Ferguson Road, Hazardous	1.25 Hr, 39 Mi
DP77, Reliz Canyon Road	43 Min, 22 Mi
Pacific Valley USFS Fire Station 68542 Hwy 1, Big Sur	1.5 Hr, 49 Mi
Nacimiento-Ferguson Road, Hazardous	

Campground	Latitude	Longitude
Arroyo Seco	36° 13.982' N	121° 28.991' W
China Camp	36° 17.777' N	121° 34.067' W
White Oaks	36° 19.543' N	121° 34.436' W
Butchers Gap	36° 21.358' N	121° 48.824' W
Escondido	36° 08.503' N	121° 29.675' W
Santa Lucia	36° 07.109' N	121° 27.940' W
Nacimiento	36° 00.317' N	121° 23.685' W
Ponderosa	35° 59.893' N	121° 23.072' W
Kirk Creek	35° 59.402' N	121° 29.758' W

Transportation

Dolan Fire
LPF-002428
10/04/2020-10/05/2020

- Camp
- Drop Point
- Remote Sleeping Area
- Gate
- Helibase
- Helispot
- Incident Command Post
- Internet Access
- Unexploded Ordinance
- Uncontrolled Fire Edge
- Contained Line
- Suggested Travel Routes
- Dolan Fire Major Travel Route
- Other Major Travel Route
- Road - 4WD
- Road - Light Duty - Dirt, Gravel
- Road - Light Duty - Paved
- Road - Light Duty - Unspecified Composition
- Road - Unimproved
- Trail
- Local or Other Road
- California State Park
- Wilderness
- Fort Hunter Liggett



Airbus, USGS, NGA, NASA, CGIAR, NCEAS, NLS, OS, NMA, Geod46, Felsen, GSA, GSI and the GIS User Community