

Point Type	Name	Latitude	Longitude
Camp	Plaskett	35° 55.067' N	121° 28.025' W
Camp	Seco Spike	36° 14.132' N	121° 28.615' W
Camp	Mission Spike	35° 58.075' N	121° 10.685' W
Drop Point	DP-9	36° 13.743' N	121° 45.879' W
Drop Point	DP-11	36° 07.038' N	121° 37.804' W
Drop Point	DP-10	36° 09.582' N	121° 40.164' W
Drop Point	DP-12	36° 11.388' N	121° 42.434' W
Drop Point	DP-53	36° 01.236' N	121° 33.109' W
Drop Point	DP-54	36° 01.186' N	121° 32.393' W
Drop Point	DP-55	36° 01.557' N	121° 32.133' W
Drop Point	DP-13	36° 12.700' N	121° 41.781' W
Drop Point	DP-14	36° 12.567' N	121° 41.149' W
Drop Point	DP-15	36° 12.012' N	121° 40.081' W
Drop Point	DP-17	36° 11.433' N	121° 39.519' W
Drop Point	DP-57	36° 00.588' N	121° 27.174' W
Drop Point	DP-56	35° 59.330' N	121° 29.644' W
Drop Point	DP-16	36° 11.586' N	121° 39.615' W
Drop Point	DP-8	36° 10.170' N	121° 41.076' W
Drop Point	DP-58	35° 58.297' N	121° 26.499' W
Drop Point	DP-72	36° 03.711' N	121° 18.100' W
Drop Point	DP-59	36° 00.593' N	121° 31.100' W
Drop Point	DP-60	36° 05.690' N	121° 25.379' W
Drop Point	DP-70	36° 04.349' N	121° 11.869' W
Drop Point	DP-64	35° 54.418' N	121° 21.841' W
Drop Point	DP-61	36° 00.807' N	121° 24.731' W
Drop Point	DP-62	35° 58.962' N	121° 27.054' W
Drop Point	DP-63	35° 59.410' N	121° 21.841' W
Drop Point	DP-31	36° 14.040' N	121° 29.193' W
Drop Point	DP-65	35° 59.008' N	121° 28.245' W
Drop Point	DP-71	36° 04.639' N	121° 16.959' W
Drop Point	DP-73	36° 06.610' N	121° 14.741' W
Drop Point	DP-66	35° 58.302' N	121° 19.408' W
Drop Point	DP-74	36° 07.543' N	121° 15.842' W
Drop Point	DP-77	36° 11.073' N	121° 17.640' W
Drop Point	DP-85	35° 53.807' N	121° 27.596' W
Drop Point	DP-69	35° 57.713' N	121° 25.623' W
Drop Point	DP-83	36° 15.435' N	121° 25.378' W
Drop Point	DP-67	35° 58.087' N	121° 22.724' W
Drop Point	DP-68	36° 01.515' N	121° 17.328' W
Drop Point	DP-75	36° 00.004' N	121° 15.268' W
Drop Point	DP-76	36° 04.392' N	121° 21.014' W
Helispot	H-1	36° 11.445' N	121° 41.963' W
Helispot	PV-Helispot	35° 55.957' N	121° 28.158' W
Helispot	H-51	36° 03.270' N	121° 32.220' W
Helispot	H-52	36° 00.710' N	121° 27.560' W
Helispot	H-2	36° 10.780' N	121° 40.500' W
Helispot	H-3	36° 10.600' N	121° 37.870' W
Helispot	H-4	36° 09.201' N	121° 33.711' W
Helispot	H-53	36° 03.124' N	121° 29.770' W
Helispot	H-5	36° 16.460' N	121° 46.230' W
Helispot	H-54	35° 58.290' N	121° 27.191' W
Helispot	H-60	36° 14.155' N	121° 28.813' W
Helispot	H-56	35° 57.600' N	121° 15.571' W
Helispot	H-55	35° 58.000' N	121° 23.601' W
Helispot	H-63	36° 16.160' N	121° 28.760' W
Helispot	H-62	36° 15.623' N	121° 29.343' W
Helispot	H-61	36° 14.935' N	121° 28.530' W
Helispot	H-6	36° 10.408' N	121° 32.376' W
Ranch	Merle Ranch	36° 4.090' N	121° 21.435' W

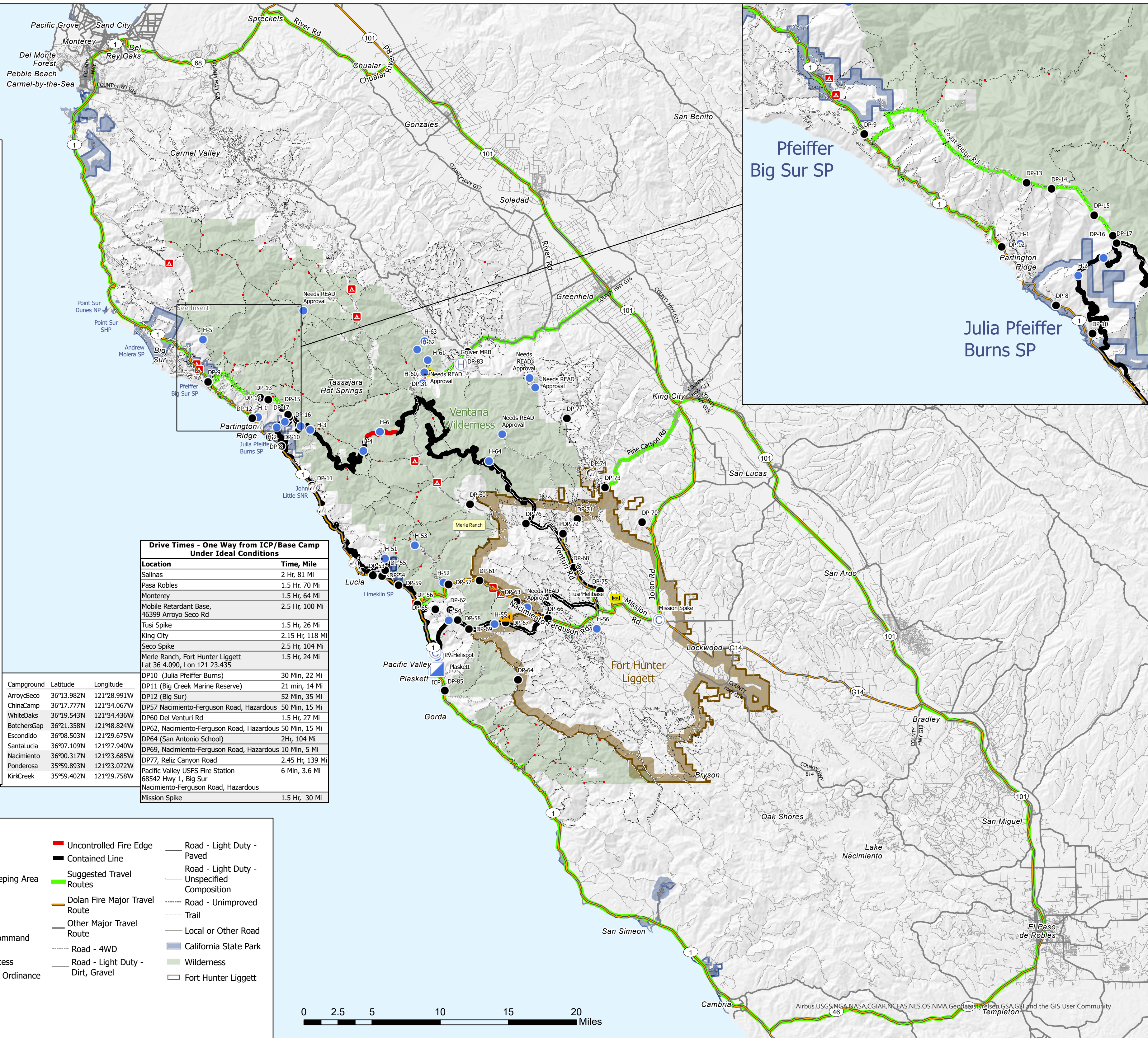
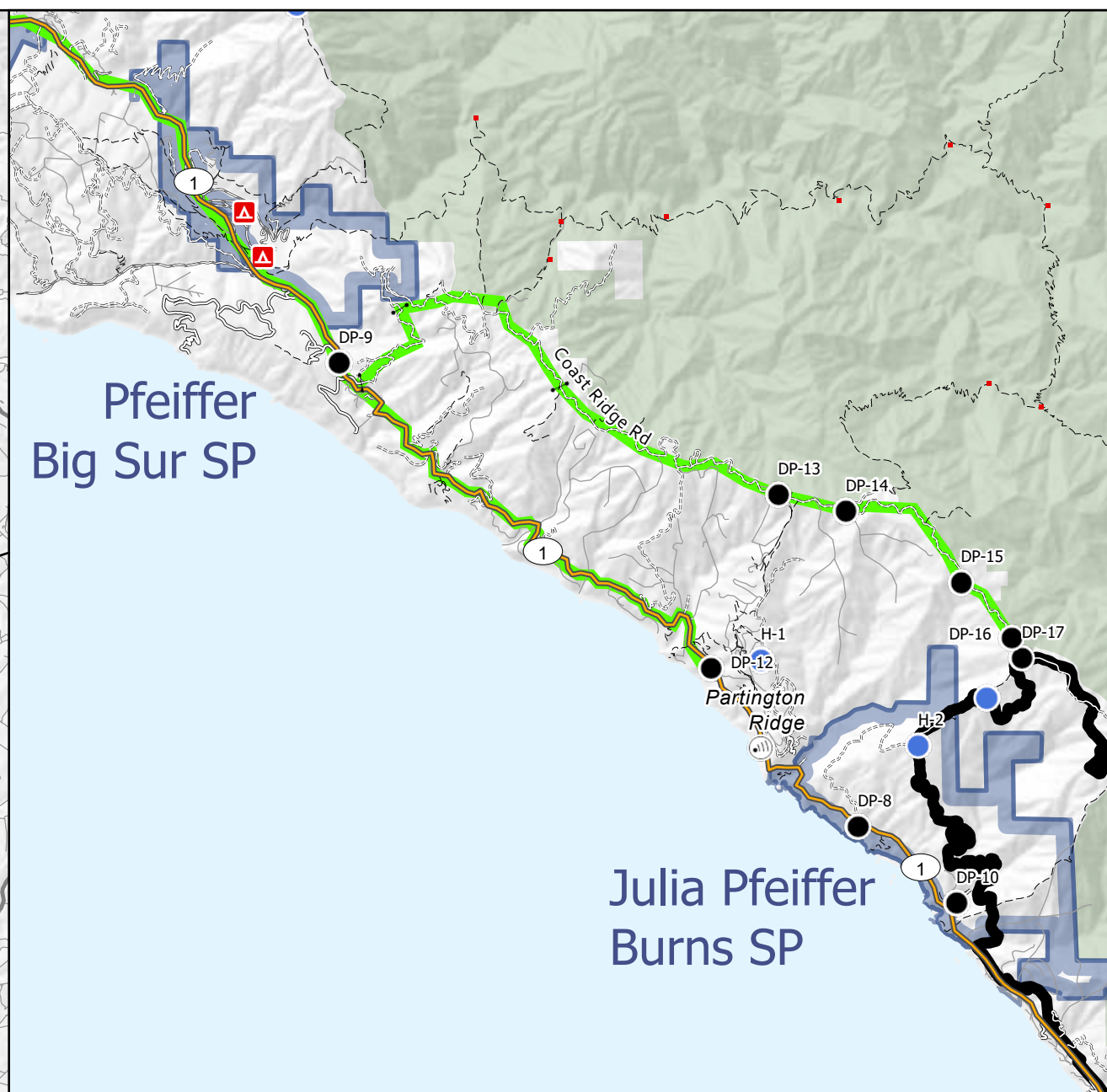
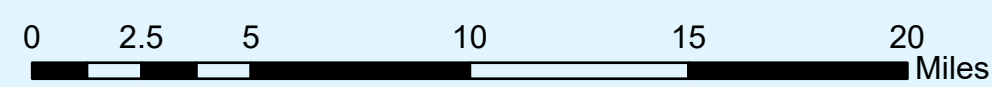
Drive Times - One Way from ICP/Base Camp Under Ideal Conditions	
Location	Time, Mile
Salinas	2 Hr, 81 Mi
Pasa Robles	1.5 Hr, 70 Mi
Monterey	1.5 Hr, 64 Mi
Mobile Retardant Base, 46399 Arroyo Seco Rd	2.5 Hr, 100 Mi
Tusi Spike	1.5 Hr, 26 Mi
King City	2.15 Hr, 118 Mi
Seco Spike	2.5 Hr, 104 Mi
Merle Ranch, Fort Hunter Liggett Lat 36 4.090, Lon 121 23.435	1.5 Hr, 24 Mi
DP10 (Julia Pfeiffer Burns)	30 Min, 22 Mi
DP11 (Big Creek Marine Reserve)	21 min, 14 Mi
DP12 (Big Sur)	52 Min, 35 Mi
DP57 Nacimiento-Ferguson Road, Hazardous	50 Min, 15 Mi
DP60 Del Venturi Rd	1.5 Hr, 27 Mi
DP62, Nacimiento-Ferguson Road, Hazardous	50 Min, 15 Mi
DP64 (San Antonio School)	2Hr, 104 Mi
DP69, Nacimiento-Ferguson Road, Hazardous	10 Min, 5 Mi
DP77, Reliz Canyon Road	2.45 Hr, 139 Mi
Pacific Valley USFS Fire Station 68542 Hwy 1, Big Sur	6 Min, 3.6 Mi
Nacimiento-Ferguson Road, Hazardous	
Mission Spike	1.5 Hr, 30 Mi

Campground	Latitude	Longitude
ArroyoSeco	36°13.982' N	121°28.991' W
ChinaCamp	36°17.777' N	121°34.067' W
WhiteOaks	36°19.543' N	121°34.436' W
ButchersGap	36°21.358' N	121°48.824' W
Escondido	36°08.503' N	121°29.675' W
SantaLucia	36°07.109' N	121°27.940' W
Nacimiento	36°00.317' N	121°23.685' W
Ponderosa	35°59.893' N	121°23.072' W
KirkCreek	35°59.402' N	121°29.758' W

Transportation

Dolan Fire CA-LPF-002428

- Camp
- Drop Point
- Remote Sleeping Area
- Gate
- Helibase
- Helispot
- Incident Command Post
- Internet Access
- Unexploded Ordinance
- Uncontrolled Fire Edge
- Contained Line
- Suggested Travel Routes
- Dolan Fire Major Travel Route
- Other Major Travel Route
- Road - 4WD
- Road - Light Duty - Dirt, Gravel
- Road - Light Duty - Paved
- Road - Light Duty - Unspecified Composition
- Road - Unimproved
- Trail
- Local or Other Road
- California State Park
- Wilderness
- Fort Hunter Liggett



Airbus, USGS, NGA, NASA, CGIAR, NCEAS, NLS, OS, NMA, GeoEye, GeoEye, GSA, GSI and the GIS User Community