

| Point Type | Name | Latitude | Longitude |
|------------|---------------|---------------|----------------|
| Camp | Plaskett | 35° 55.067' N | 121° 28.025' W |
| Camp | Seco Spike | 36° 14.132' N | 121° 28.615' W |
| Camp | Mission Spike | 35° 58.075' N | 121° 10.685' W |
| Drop Point | DP-9 | 36° 13.743' N | 121° 45.879' W |
| Drop Point | DP-11 | 36° 07.038' N | 121° 37.804' W |
| Drop Point | DP-10 | 36° 09.582' N | 121° 40.164' W |
| Drop Point | DP-12 | 36° 11.388' N | 121° 42.434' W |
| Drop Point | DP-53 | 36° 01.236' N | 121° 33.109' W |
| Drop Point | DP-54 | 36° 01.186' N | 121° 32.393' W |
| Drop Point | DP-55 | 36° 01.557' N | 121° 32.133' W |
| Drop Point | DP-13 | 36° 12.700' N | 121° 41.781' W |
| Drop Point | DP-14 | 36° 12.567' N | 121° 41.149' W |
| Drop Point | DP-15 | 36° 12.012' N | 121° 40.081' W |
| Drop Point | DP-17 | 36° 11.433' N | 121° 39.519' W |
| Drop Point | DP-57 | 36° 00.588' N | 121° 27.174' W |
| Drop Point | DP-56 | 35° 59.330' N | 121° 29.644' W |
| Drop Point | DP-16 | 36° 11.586' N | 121° 39.615' W |
| Drop Point | DP-8 | 36° 10.170' N | 121° 41.076' W |
| Drop Point | DP-58 | 35° 58.297' N | 121° 26.499' W |
| Drop Point | DP-72 | 36° 03.711' N | 121° 18.100' W |
| Drop Point | DP-59 | 36° 00.593' N | 121° 31.100' W |
| Drop Point | DP-60 | 36° 05.690' N | 121° 25.379' W |
| Drop Point | DP-70 | 36° 04.349' N | 121° 11.869' W |
| Drop Point | DP-64 | 35° 54.418' N | 121° 21.841' W |
| Drop Point | DP-61 | 36° 00.807' N | 121° 24.731' W |
| Drop Point | DP-62 | 35° 58.962' N | 121° 27.054' W |
| Drop Point | DP-63 | 35° 59.410' N | 121° 21.841' W |
| Drop Point | DP-31 | 36° 14.040' N | 121° 29.193' W |
| Drop Point | DP-65 | 35° 59.008' N | 121° 28.245' W |
| Drop Point | DP-71 | 36° 04.639' N | 121° 16.959' W |
| Drop Point | DP-73 | 36° 06.610' N | 121° 14.741' W |
| Drop Point | DP-66 | 35° 58.302' N | 121° 19.408' W |
| Drop Point | DP-74 | 36° 07.543' N | 121° 15.842' W |
| Drop Point | DP-77 | 36° 11.073' N | 121° 17.640' W |
| Drop Point | DP-85 | 35° 53.807' N | 121° 27.596' W |
| Drop Point | DP-69 | 35° 57.713' N | 121° 25.623' W |
| Drop Point | DP-83 | 36° 15.435' N | 121° 25.378' W |
| Drop Point | DP-67 | 35° 58.087' N | 121° 22.724' W |
| Drop Point | DP-68 | 36° 01.515' N | 121° 17.328' W |
| Drop Point | DP-75 | 36° 00.004' N | 121° 15.268' W |
| Drop Point | DP-76 | 36° 04.392' N | 121° 21.014' W |
| Helispot | H-1 | 36° 11.445' N | 121° 41.963' W |
| Helispot | PV-Helispot | 35° 55.957' N | 121° 28.158' W |
| Helispot | H-51 | 36° 03.270' N | 121° 32.220' W |
| Helispot | H-52 | 36° 00.710' N | 121° 27.560' W |
| Helispot | H-2 | 36° 10.780' N | 121° 40.500' W |
| Helispot | H-3 | 36° 10.600' N | 121° 37.870' W |
| Helispot | H-4 | 36° 09.201' N | 121° 33.711' W |
| Helispot | H-53 | 36° 03.124' N | 121° 29.770' W |
| Helispot | H-5 | 36° 16.460' N | 121° 46.230' W |
| Helispot | H-54 | 35° 58.290' N | 121° 27.191' W |
| Helispot | H-60 | 36° 14.155' N | 121° 28.813' W |
| Helispot | H-56 | 35° 57.600' N | 121° 15.571' W |
| Helispot | H-55 | 35° 58.000' N | 121° 23.601' W |
| Helispot | H-63 | 36° 16.160' N | 121° 28.760' W |
| Helispot | H-62 | 36° 15.623' N | 121° 29.343' W |
| Helispot | H-61 | 36° 14.935' N | 121° 28.530' W |
| Helispot | H-6 | 36° 10.408' N | 121° 32.376' W |
| Ranch | Merle Ranch | 36° 4.090' N | 121° 21.435' W |

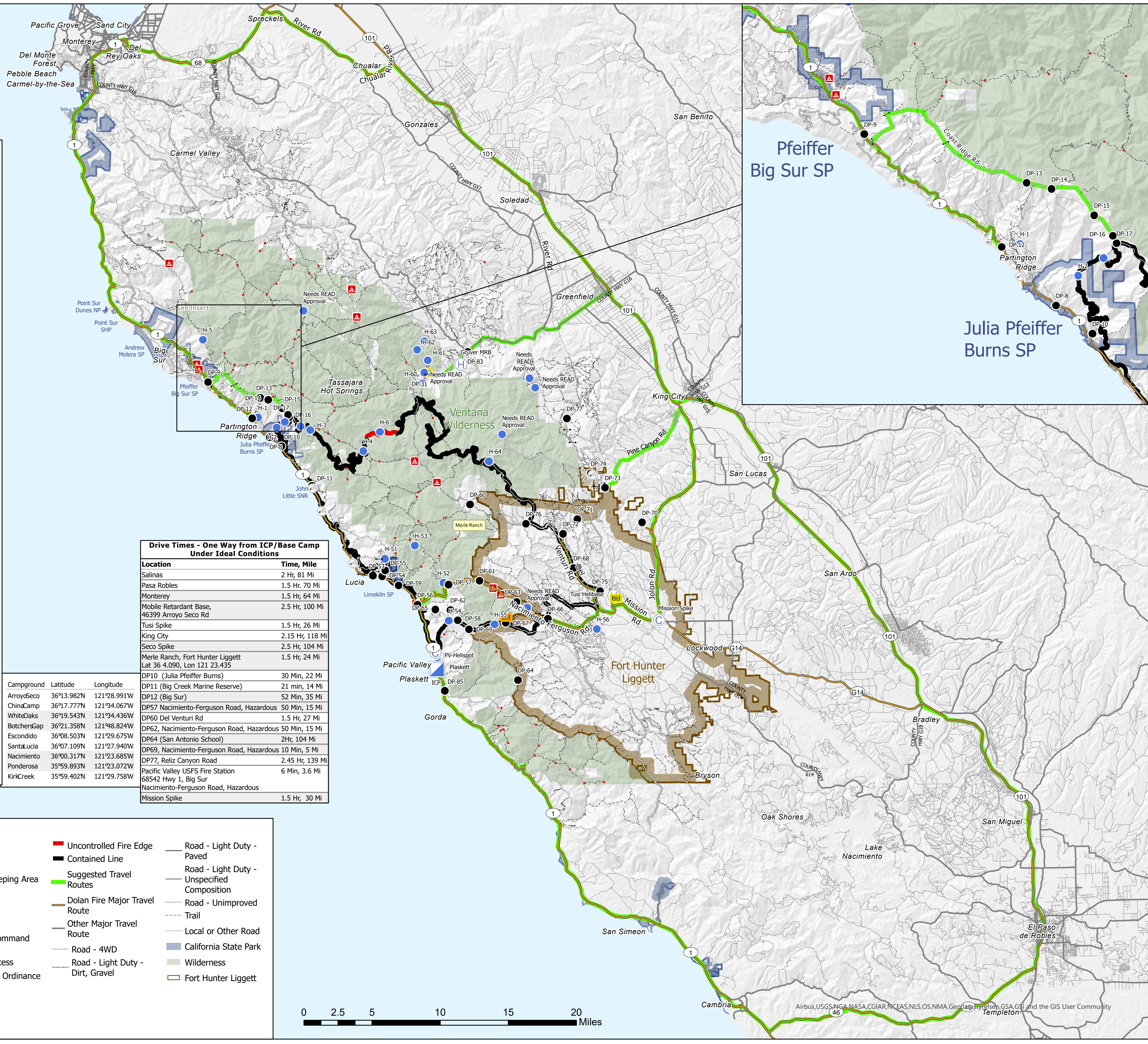
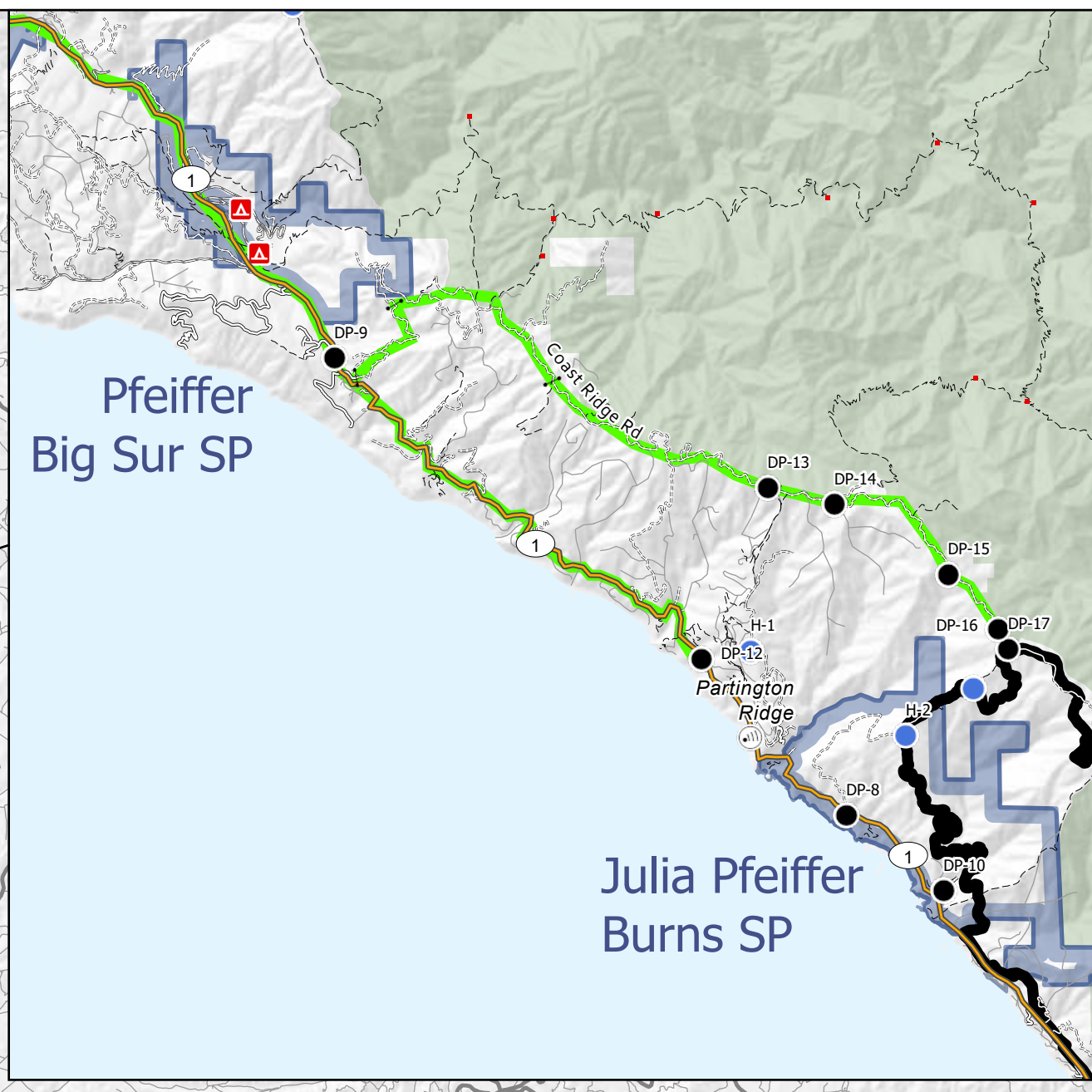
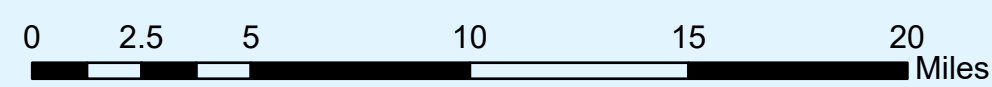
| Drive Times - One Way from ICP/Base Camp Under Ideal Conditions | |
|--|-----------------|
| Location | Time, Mile |
| Salinas | 2 Hr, 81 Mi |
| Pasa Robles | 1.5 Hr, 70 Mi |
| Monterey | 1.5 Hr, 64 Mi |
| Mobile Retardant Base, 46399 Arroyo Seco Rd | 2.5 Hr, 100 Mi |
| Tusi Spike | 1.5 Hr, 26 Mi |
| King City | 2.15 Hr, 118 Mi |
| Seco Spike | 2.5 Hr, 104 Mi |
| Merle Ranch, Fort Hunter Liggett Lat 36 4.090, Lon 121 23.435 | 1.5 Hr, 24 Mi |
| DP10 (Julia Pfeiffer Burns) | 30 Min, 22 Mi |
| DP11 (Big Creek Marine Reserve) | 21 min, 14 Mi |
| DP12 (Big Sur) | 52 Min, 35 Mi |
| DP57 Nacimiento-Ferguson Road, Hazardous | 50 Min, 15 Mi |
| DP60 Del Venturi Rd | 1.5 Hr, 27 Mi |
| DP62, Nacimiento-Ferguson Road, Hazardous | 50 Min, 15 Mi |
| DP64 (San Antonio School) | 2Hr, 104 Mi |
| DP69, Nacimiento-Ferguson Road, Hazardous | 10 Min, 5 Mi |
| DP77, Reliz Canyon Road | 2.45 Hr, 139 Mi |
| Pacific Valley USFS Fire Station 68542 Hwy 1, Big Sur | 6 Min, 3.6 Mi |
| Nacimiento-Ferguson Road, Hazardous | |
| Mission Spike | 1.5 Hr, 30 Mi |

| Campground | Latitude | Longitude |
|-------------|-------------|--------------|
| ArroyoSeco | 36°13.982'N | 121°28.991'W |
| ChinaCamp | 36°17.777'N | 121°34.067'W |
| WhiteOaks | 36°19.543'N | 121°34.436'W |
| BotchersGap | 36°21.358'N | 121°48.824'W |
| Escondido | 36°08.503'N | 121°29.675'W |
| SantaLucia | 36°07.109'N | 121°27.940'W |
| Nacimiento | 36°00.317'N | 121°23.685'W |
| Ponderosa | 35°59.893'N | 121°23.072'W |
| KirkCreek | 35°59.402'N | 121°29.758'W |

Transportation

Dolan Fire
CA-LPF-002428
10/16/2020

- Camp
- Drop Point
- Remote Sleeping Area
- Gate
- Helibase
- Helispot
- Incident Command Post
- Internet Access
- Unexploded Ordinance
- Uncontrolled Fire Edge
- Contained Line
- Suggested Travel Routes
- Dolan Fire Major Travel Route
- Other Major Travel Route
- Road - 4WD
- Road - Light Duty - Dirt, Gravel
- Road - Light Duty - Paved
- Road - Light Duty - Unspecified Composition
- Road - Unimproved
- Trail
- Local or Other Road
- California State Park
- Wilderness
- Fort Hunter Liggett



Airbus, USGS, NGA, NASA, CGIAR, NCEAS, NLS, OS, NMA, GeoEye, GeoEye, GSA, GSI and the GIS User Community