

INCIDENT ACTION PLAN

DOLAN AND COLEMAN FIRES

CA-LPF-002428 and CA-LPF-003161



PHONE BRIEFING FOR SPIKED AND REMOTE RESOURCES
CALL 888-844-9904 - ENTER PASSCODE 4808672#

Monday
10/19/2020
0700 - 1900



INCIDENT OBJECTIVES (ICS 202)

1. Incident Name: Dolan and Coleman Fires	2. Operational Period:	Date From: 10/19/2020 Time From: 0700	Date To: 10/19/2020 Time To: 1900
---	-------------------------------	--	--------------------------------------

3. Objective(s):

LEADERS INTENT

Continue a full suppression strategy on the Dolan and Coleman Fires. Values at risk include human safety, private property, National Scenic Byway (Highway 1), Fort Hunter Liggett improvements, and wilderness values. Apply tactics that offer the highest probability of success. Identify, develop and prepare contingency measures in a proactive fashion. Develop and maintain an accurate and timely information sharing process for high values at risk.

MANAGEMENT OBJECTIVES

- Provide for firefighter and public safety through hazard recognition and risk management.
- Minimize risk and limit exposure by following COVID-19 best management practices.
- Minimize or avoid impacts to wilderness values by applying minimum impact suppression tactics (MIST).
- Utilize incident resource advisors to minimize impacts on natural and cultural resources.
- Distribute accurate and timely fire information to cooperators, the public, and stakeholders.
- Manage resources to meet protection objectives while maintaining fiscal accountability.

CONTROL OBJECTIVES

- Minimize risk to private property, surrounding communities, and resource values by:
- Maintaining the Dolan Fire within existing perimeter.
- Provide for suppression repair where most advantageous with existing resources.
- Utilize technology to manage risks to infrastructure, values at risk to guide aggressive mop up, control and suppression repair tactics.
- Engage the Coleman Fire to provide for suppression action while protecting structures and values at risk.

5. Site Safety Plan Required? Yes No

Approved Site Safety Plan(s) Located at:

6. Incident Action Plan

- | | | |
|-----------|-------------------|-----------------|
| √ ICS 203 | √ ICS 206 | √ DEMOB Message |
| √ WX | √ COVID-19 | √ ICS 214 |
| √ ICS 204 | √ ICS 208 | √ MIR 9 LINE |
| √ ICS 220 | √ Finance Message | |
| √ ICS 205 | √ PIO Message | |

7. Prepared By:	Glenn Palmgren	Position/Title: PSC2 (t)	Signature:
8. Approved by Incident Commander:	Steve Goldman	Signature:	

Weekly Summary

	Sun Oct 18	Mon Oct 19	Tue Oct 20	Wed Oct 21	Thu Oct 22	Fri Oct 23	Sat Oct 24	Sun Oct 25
Max Temp, °F	91	87	89	90	84	78	76	76
Min Temp, °F	61	61	62	64	59	57	56	54
Max RH, %	28	35	35	32	44	55	54	49
Min RH, %	16	21	20	21	32	40	38	31
Max Wind, mph	5	12	13	12	6	7	8	8
Min Wind, mph	1	1	2	5	3	2	2	3
Max Wind Gust, time/dir.	5 PM ↘	8 PM ↘	8 PM ↘	12 AM ↘	2 PM ↗	2 PM ↗	2 PM →	2 PM ↗
Max Wind Gust, mph	6	15	16	14	7	8	9	10
Min Wind Gust, mph	2	1	2	5	3	3	3	5
Max Cloud Cover, %	21	34	27	21	34	52	55	54
Min Cloud Cover, %	14	12	11	13	18	27	35	26
Max Prob. of Precip., %	0	0	0	0	0	2	8	9
Max LAL	1	1	1	1				
Max Mixing Height, ft	4669	3126	3250	735				
Min Mixing Height, ft	95	95	95	471				
Max Ventilation Rate, kt-ft	14	13	10	3				
Min Ventilation Rate, kt-ft	0	0	0	1				

FNUS76 KMTR 182132

FWSMTR

Spot Forecast for Dolan Fire...EA IMT – Silver National Weather Service San Francisco Bay Area

232 PM PDT Sun Oct 18 2020.

Forecast is based on forecast start time of 1400 PDT on October 18. If conditions become unrepresentative...contact the National WeatherService.

DISCUSSION...A gradual and modest cooling trend will continue through Monday, and humidity will increase slightly. But overall, warm and dry conditions will persist. Winds will remain light.

MONDAY...

Sky/weather.....Sunny.

Max temperature.....83-86.

Min humidity.....15-20 percent.

Wind (20 ft).....Northeast winds up to 5 mph shifting to the north 5 to 10 mph in the afternoon.

CWR.....0 percent.

LAL.....1.

Mixing height.....3500 ft AGL.

Transport winds.....North 5 to 10 mph.

Marine layer.....None.

ORGANIZATION ASSIGNMENT LIST (ICS 203)

1. Incident Name: Dolan and Coleman Fires		2. Operational Period: Date From: 10/19/2020 Time From: 0700		Date To: 10/19/2020 Time To: 1900	
3. Incident Commander(s) and Command Staff:			7. Operation Section:		
IC/UC	Steve Goldman, Lucas Minton (t)	Field Ops	Joe Alyea		
		Planning Ops	Keith Murphy		
Safety Officer	Chris Woods				
Information Officer	Micah Bell				
Liaison Officer	Roger Goldman				
4. Agency/Organization Representatives:		Branch			
Agency/Organization	Name	Division/Group	A/Z/K/F	R. Thibault (10/20)	
Los Padres AREP	Nick Larson	Division/Group	Y/X/W	Mike Rice, Rob Shields (t)	
Los Padres AREP COVID Advisor	Charles "CJ" Woodard	Division/Group	S/R	Patrick Johnson (t)	
		Division/Group	M/O/P	Peter Stephenson (LWD 10/19)	
Big Sur Fire Dep.	Matt Harris	Division/Group	Staging		
Fort Hunter Liggett	Jeff Manetti	Division/Group	Coleman	Mark Brown, B. Richwine (t)	
Monterey Sheriff	Ray Tongol				
CHP	M. Olta, John Yerace				
CA State Parks	Matthew Khalar				
PG&E	Geoff Money				
5. Planning Section:		Branch			
Chief	Glenn Palmgren (t)				
Resource Unit					
Situation Unit	Ben Garrett (t)				
Documentation Unit					
GISS	Matt Judd				
FBAN					
IMET		Air Operations Branch			
Training Specialist		Air Operations Branch Director			
ITSS	Bill Whitacre, Brian Lynch (t)	Air Support Group Supervisor			
Lead READ	Kevin Keeler	Tusi Helibase Manager John Kaisersatt			
6. Logistics Section		8. Finance/Administration Section:			
Chief	Jamie Copple, Tim Oland (t)	Chief	Peter Beringer, Deb Niles (t)		
Ordering Manager	Chris Adamcik	Time Unit	Mary Coleman, Valarie Sanchez (t)		
Facilities Unit	Dave Avery	Comp/Claims Unit			
Ground Support Unit		Cost Unit			
Communications Unit	Peter Willis	Personnel Time	Rosemary Johnson		
Medical Unit	Mike Passarelli	Equipment Time	Araceli Nahas		
Base Camp Manager	Mike Johnson				
COVID					
Prepared By: Name: Glenn Palmgren		Position/Title: PSC2 (t)		Signature: /s/ Glenn R. Palmgren	
ICS 203		Date/Time: 10/18/2020 2200 hours		<small>NIMS IAP</small>	

ASSIGNMENT LIST (ICS 204 WF)

CONTROLLED UNCLASSIFIED INFORMATION/BASIC

1. Incident Name: Dolan and Coleman Fires	2. Operational Period: Date From: 10/19/2020 Date To: 10/19/2020 Time From: 0700 Time To: 1900	3. Branch Division A/Z/K/F
--	---	--

Page 1 of 1

4. Operations Personnel:	
Field Ops Section Chief: Joe Alyea	Planning Ops: Keith Murphy
Branch Director:	Branch Safety:
Division/Group Supervisor: R. Thibault (10/20)	Air Attack:

5. Resources Assigned:		***Resources in BOLD are identified as IA resources***						
Resource Identifier	ALS	LWD	Leader	Personnel	Request #	Hours	Report To	Return To
EXCA YLU0172		10/21	PARKER, KACY	2	E-568	0700-1900	Pacific Valley	Pacific Valley
EXCA T3-5157		10/28	PARKER, KYLE	2	E-580	0700-1900	Pacific Valley	Pacific Valley
CHIP RAPID RESPONSE		10/29	UNKNOWN	2	E-597	0700-1900	Pacific Valley	Pacific Valley
AMBU ATASCADERO AMB 4X4	X	10/22	ROBERTS, BRANDON	2	E-573	0700-1900	Pacific Valley	Pacific Valley
SOFR(t) ZAVALLA		10/18	ZAVALLA, ANTHONY	1	O-1162	0700-1900	Pacific Valley	Pacific Valley

6. Work Assignments:
TASK: Restore roads, dozer lines and drainage systems. Reduce visual impacts of the fire lines. Monitor the fires edge.
PURPOSE: Minimize potential for erosion and sediment delivery to water courses.
END STATE: To restore firelines and transportation routes back to prefire conditions as reasonably possible.
RISK ASSESSMENT: Stay alert for drivers in the fire area and in restricted areas. Watch for snags and rollout onto roads and working around heavy equipment.

7. Special Instructions:
-All medical resources MUST check in with Los Padres Dispatch and Division Supervisor once in place, see medical plan for REMS availability.
-READs and the BAER Team will check in and out with Division.
-Assume all divisions have Sudden Oak Death Pathogen and clean and disinfect everything. No weed wash is available use a commercial wash station where sump collection is done to prevent the further spread.
-For Mop up and Patrol – Do not go off the road (UXO).
-Utilize Collector to mark all accountable property (pumps, hose, tanks...), attach a picture of the serial number with the LAT and LONG.
-Use call outs when traveling on Nacimiento Ferguson Road.
-INITIAL ATTACK RESOURCES will maintain a state of readiness for response. All responses will be initiated by operations through the divisions. Once the resource is cancelled/released they will return to the incident and notify comms that they are back in their division.

8. Communications

Name	Ch	Function	Rx Freq	Rx Tone	Tx Freq	Tx Tone	Notes
LPF AN4	1	COMMAND	171.5500	CSQ	164.1500	136.5	LPF ADMIN NET ALDER PK T4
LPF AN6	2	COMMAND	171.5500	CSQ	164.1500	156.7	LPF ADMIN NET PIEDRAS BLANCAS T6
LPF AN8	3	COMMAND	171.5500	CSQ	164.1500	103.5	LPF ADMIN NET CONE PK T8
LPF AN10	4	COMMAND	171.5500	CSQ	164.1500	107.2	LPF ADMIN NET CHEWS RIDGE T10
LPF AN13	5	COMMAND	171.5500	CSQ	164.1500	141.3	LPF ADMIN NET ANDERSON T13
LPF AN15	6	COMMAND	171.5500	CSQ	164.1500	162.2	LPF ADMIN NET CALANDRA T15
LPF T4	7	TACTICAL	163.7125	CSQ	163.7125	CQS	LPF TACTICAL - ALL DIVISIONS
A/G TAC	9	A/G TACTICAL	163.1500	CSQ	163.1500	CQS	A/G TAC DOLAN FIRE
A/G CMD	10	A/G COMMAND	167.5500	CSQ	167.5500	CQS	A/G CMD DOLAN FIRE
CALCORD	15	MEDEVAC A/G	156.0750	156.7	156.0750	156.7	MEDICAL EVAC EMERGENCIES ONLY
GUARD 18	16	AIRGUARD	168.6250	CSQ	168.6250	110.9	EMERGENCIES ONLY

9. Prepared by: Name: Glenn Palmgren PSC2 (t) Signature: /s/ Glenn R. Palmgren
Date/Time: 10/18/2020 2200 Personnel Count: 9

ASSIGNMENT LIST (ICS 204 WF)

CONTROLLED UNCLASSIFIED INFORMATION//BASIC

1. Incident Name: <p style="text-align: center;">Dolan and Coleman Fires</p>	2. Operational Period: Date From: 10/19/2020 Date To: 10/19/2020 Time From: 0700 Time To: 1900	3. Branch	Division <p style="text-align: center;">Y/X/W</p>
---	---	------------------	--

Page 1 of 1

4. Operations Personnel:	Planning Ops: Keith Murphy
Field Ops Section Chief: Joe Alyea	Branch Safety:
Branch Director:	Air Attack:
Division/Group Supervisor: Mike Rice, Rob Shields (t)	

5. Resources Assigned:	***Resources in BOLD are identified as IA resources***					Hours	Report to	Return to
Resource Identifier	ALS	LWD	Leader	Personnel	Request #			
ENG3 LPF E18		10/29	LOW, CHRIS	3	E-538	0700-1900	Mission ICP	Mission ICP
ENG7 LPF E17		10/28	DELGADO, ELANA	2	E-542	0700-1900	Mission ICP	Mission ICP
DOZ2 HAYDEN		10/25	HAYDEN, CODY	2	E-537	0700-1900	Mission ICP	Mission ICP
DOZ2 ALGERINE WEST		10/29	MONTE, WEST	2	E-569	0700-1900	Mission ICP	Mission ICP
EXCA BLK RANGE		10/19	PETERSON, PAUL	2	E-548	0700-1900	Mission ICP	Mission ICP
EXCA CASTLE ROCK		10/22	BELL, ANDREW	2	E-567	0700-1900	Mission ICP	Mission ICP
EXCA T1 BDRM		10/29	PAINTER, STEVE	1	E-590	0700-1900	Mission ICP	Mission ICP
EXCA FHL 8890		10/29	FOSLINE, TYLER	1	E-591	0700-1900	Mission ICP	Ft Hunter Liggett
REAF HEARD		10/25	HEARD, CHARLES	1	O-1214	0700-1900	Mission ICP	Mission ICP

6. Work Assignments:
 TASK: Patrol and mop up where possible. Monitor the fires edge in inaccessible locations.
 PURPOSE: Keep fire within existing containment lines and erosion control providing for public safety.
 END STATE: Highway 1 corridor and associated communities protected. To restore fireline back to prefire conditions as reasonably possible.
 RISK ASSESSMENT: Stay alert for drivers on Highway 1 that stop to watch fire activity. Watch for snags along the roadway and rollout from above.

7. Special Instructions:
 -All medical resources MUST check in with Los Padres Dispatch and Division Supervisor once in place, see medical plan for REMS availability.
 -READs and the BAER Team will check in and out with Division.
 -Assume all divisions have Sudden Oak Death Pathogen and clean and disinfect everything. No weed wash is available use a commercial wash station where sump collection is done to prevent the further spread.
 -For Mop up and Patrol – Do not go off the road (UXO).
 -Utilize Collector to mark all accountable property (pumps, hose, tanks...), attach a picture of the serial number with the LAT and LONG.
 -Use call outs when traveling on Nacimiento Ferguson Road.
 -INITIAL ATTACK RESOURCES will maintain a state of readiness for response. All responses will be initiated by operations through the divisions. Once the resource is cancelled/released they will return to the incident and notify comms that they are back in their division.

8. Communications							
Name	Ch	Function	Rx Freq	Rx Tone	Tx Freq	Tx Tone	Notes
LPF AN4	1	COMMAND	171.5500	CSQ	164.1500	136.5	LPF ADMIN NET ALDER PK T4
LPF AN6	2	COMMAND	171.5500	CSQ	164.1500	156.7	LPF ADMIN NET PIEDRAS BLANCAS T6
LPF AN8	3	COMMAND	171.5500	CSQ	164.1500	103.5	LPF ADMIN NET CONE PK T8
LPF AN15	6	COMMAND	171.5500	CSQ	164.1500	162.2	LPF ADMIN NET CALANDRA T15
LPF T4	7	TACTICAL	163.7125	CSQ	163.7125	CQS	LPF TACTICAL - ALL DIVISIONS
A/G TAC	9	A/G TACTICAL	163.1500	CSQ	163.1500	CQS	A/G TAC DOLAN FIRE
A/G CMD	10	A/G COMMAND	167.5500	CSQ	167.5500	CQS	A/G CMD DOLAN FIRE
CALCORD	15	MEDEVAC A/G	156.0750	156.7	156.0750	156.7	MEDICAL EVAC EMERGENCIES ONLY
GUARD 18	16	AIRGUARD	168.6250	CSQ	168.6250	110.9	EMERGENCIES ONLY

9. Prepared by: Name: Glenn Palmgren	PSC2 (t)	Signature: /s/ Glenn R. Palmgren
--	----------	---

ASSIGNMENT LIST (ICS 204 WF)

CONTROLLED UNCLASSIFIED INFORMATION//BASIC

1. Incident Name: Dolan and Coleman Fires	2. Operational Period: Date From: 10/19/2020 Date To: 10/19/2020 Time From: 0700 Time To: 1900	3. Branch Division S/R
--	---	---

Page 1 of 1

4. Operations Personnel:	
Field Ops Section Chief: Joe Alyea	Planning Ops: Keith Murphy
Branch Director:	Branch Safety:
Division/Group Supervisor: Patrick Johnson (t)	Air Attack:

5. Resources Assigned:		***Resources in BOLD are identified as IA resources***						
Resource Identifier	ALS	LWD	Leader	Personnel	Request #	Hours	Report to	Return to
DOZ2 BLACK RANGE		10/29	SHEPPERD, BRANDON	2	E-581	0700-1900	Mission ICP	Mission ICP
EXCA T2		10/31	HAYDEN, COLTON	1	E-578	0700-1900	Mission ICP	Mission ICP
EXCA T2		10/30	KRUCKEBERG, JAMES	1	E-579	0700-1900	Mission ICP	Mission ICP
CHIP3 CAT LAND		10/28	ALDRICH, VANESSA	3	E-575	0700-1900	Mission ICP	Mission ICP
STEQ(t) DEAN		10/31	DEAN, STEVEN	1	O-1236	0700-1900	Mission ICP	Mission ICP
ARCH RAY		10/22	RAY, MOLLY	1	O-1216	0700-1900	Mission ICP	Mission ICP
ARCH KISSINGER		10/27	KISSINFER, KRYSTAL	1	O-1228	0700-1900	Mission ICP	Mission ICP
REAF LEIS		10/22	LEIS, SHERRY	1	O-1192	0700-1900	Mission ICP	Mission ICP
REAF EDDINGS		10/22	EDDINGS, BENJAMIN	1	O-1191	0700-1900	Mission ICP	Mission ICP

6. Work Assignments:
 TASK: Identify and mitigate roadside hazard and trees. Patrol and mop up where possible. Monitor the fires edge in inaccessible locations.
 PURPOSE: Keep fire within existing containment lines and erosion control providing for public safety.
 END STATE: Community and Fort Hunter Liggett protected.
 RISK ASSESSMENT: Stay alert for drivers in the fire area and in restricted areas. Watch for snags and rollout onto roads.

7. Special Instructions:
 -All medical resources MUST check in with Los Padres Dispatch and Division Supervisor once in place, see medical plan for REMS availability.
 -READs and the BAER Team will check in and out with Division.
 -Assume all divisions have Sudden Oak Death Pathogen and clean and disinfect everything. No weed wash is available use a commercial wash station where sump collection is done to prevent the further spread.
 -For Mop up and Patrol – Do not go off the road (UXO).
 -Utilize Collector to mark all accountable property (pumps, hose, tanks...), attach a picture of the serial number with the LAT and LONG.
 -Use call outs when traveling on Nacimiento Ferguson Road.
 -INITIAL ATTACK RESOURCES will maintain a state of readiness for response. All responses will be initiated by operations through the divisions. Once the resource is cancelled/released they will return to the incident and notify comms that they are back in their division.

8. Communications							
Name	Ch	Function	Rx Freq	Rx Tone	Tx Freq	Tx Tone	Notes
LPF AN4	1	COMMAND	171.5500	CSQ	164.1500	136.5	LPF ADMIN NET ALDER PK T4
LPF AN6	2	COMMAND	171.5500	CSQ	164.1500	156.7	LPF ADMIN NET PIEDRAS BLANCAS T6
LPF AN8	3	COMMAND	171.5500	CSQ	164.1500	103.5	LPF ADMIN NET CONE PK T8
LPF AN15	6	COMMAND	171.5500	CSQ	164.1500	162.2	LPF ADMIN NET CALANDRA T15
LPF T4	7	TACTICAL	163.7125	CSQ	163.7125	CQS	LPF TACTICAL - ALL DIVISIONS
A/G TAC	9	A/G TACTICAL	163.1500	CSQ	163.1500	CQS	A/G TAC DOLAN FIRE
A/G CMD	10	A/G COMMAND	167.5500	CSQ	167.5500	CQS	A/G CMD DOLAN FIRE
CALCORD	15	MEDEVAC A/G	156.0750	156.7	156.0750	156.7	MEDICAL EVAC EMERGENCIES ONLY
GUARD 18	16	AIRGUARD	168.6250	CSQ	168.6250	110.9	EMERGENCIES ONLY

9. Prepared by: Name: Glenn Palmgren PSC2 (t)
 Signature: /s/ Glenn R. Palmgren

ICS 204	Date/Time: 10/18/2020 2200	Personnel Count: 12
----------------	----------------------------	---------------------

ASSIGNMENT LIST (ICS 204 WF)

CONTROLLED UNCLASSIFIED INFORMATION//BASIC

1. Incident Name: Dolan and Coleman Fires	2. Operational Period: Date From: 10/19/2020 Date To: 10/19/2020 Time From: 0700 Time To: 1900	3. Branch Division M/O/P
		Page 1 of 1

4. Operations Personnel:	
Field Ops Section Chief: Joe Alyea	Planning Ops: Keith Murphy
Branch Director:	Branch Safety:
Division/Group Supervisor: Peter Stephenson (LWD 10/19)	Air Attack:

5. Resources Assigned:		***Resources in BOLD are identified as IA resources***						
Resource Identifier	ALS	LWD	Leader	Personnel	Request #	Hours	Report to	Return to
ARROYO GRANDE FL CW IA		10/20	LARSON, SETH	10	A-171	0700-1900	Tusi Helibase	Tusi Helibase
CHIP SUNFIRE T3		10/28	STARK, LARRY	2	E-574	0700-1900	Mission ICP	Mission ICP
SOF2(t) KAISER		10/19	KAISER, BRENT	1	O-1099	0700-1900	Mission ICP	Mission ICP
REAF DOLAN		10/22	DOLAN, MICHAEL	1	O-1206	0700-1900	Mission ICP	Mission ICP

6. Work Assignments:
 TASK: Patrol and mop up where possible. Monitor the fires edge in inaccessible locations.
 PURPOSE: To maintain the fire's current identified perimeter and provide erosion control.
 END STATE: Potential of future threats of growth and erosion are eliminated.
 RISK ASSESSMENT: Watch for ash pits when mopping up and be alert for vehicle traffic. Watch for snags and rollout onto roads.

7. Special Instructions:

- All medical resources MUST check in with Los Padres Dispatch and Division Supervisor once in place, see medical plan for REMS availability.
- READs and the BAER Team will check in and out with Division.
- Assume all divisions have Sudden Oak Death Pathogen and clean and disinfect everything. No weed wash is available use a commercial wash station where sump collection is done to prevent the further spread.
- For Mop up and Patrol – Do not go off the road (UXO).
- Utilize Collector to mark all accountable property (pumps, hose, tanks...), attach a picture of the serial number with the LAT and LONG.
- Use call outs when traveling on Nacimiento Ferguson Road.
- INITIAL ATTACK RESOURCES will maintain a state of readiness for response. All responses will be initiated by operations through the divisions. Once the resource is cancelled/released they will return to the incident and notify comms that they are back in their division.

8. Communications							
Name	Ch	Function	Rx Freq	Rx Tone	Tx Freq	Tx Tone	Notes
LPF AN4	1	COMMAND	171.5500	CSQ	164.1500	136.5	LPF ADMIN NET ALDER PK T4
LPF AN6	2	COMMAND	171.5500	CSQ	164.1500	156.7	LPF ADMIN NET PIEDRAS BLANCAS T6
LPF AN8	3	COMMAND	171.5500	CSQ	164.1500	103.5	LPF ADMIN NET CONE PK T8
LPF AN15	6	COMMAND	171.5500	CSQ	164.1500	162.2	LPF ADMIN NET CALANDRA T15
LPF T4	7	TACTICAL	163.7125	CSQ	163.7125	CQS	LPF TACTICAL - ALL DIVISIONS
A/G TAC	9	A/G TACTICAL	163.1500	CSQ	163.1500	CQS	A/G TAC DOLAN FIRE
A/G CMD	10	A/G COMMAND	167.5500	CSQ	167.5500	CQS	A/G CMD DOLAN FIRE
CALCORD	15	MEDEVAC A/G	156.0750	156.7	156.0750	156.7	MEDICAL EVAC EMERGENCIES ONLY
GUARD 18	16	AIRGUARD	168.6250	CSQ	168.6250	110.9	EMERGENCIES ONLY

9. Prepared by: Name: Glenn Palmgren	PSC2 (t)	Signature: /s/ Glenn R. Palmgren
ICS 204	Date/Time: 10/18/2020 2200	Personnel Count: 14

ASSIGNMENT LIST (ICS 204 WF)

CONTROLLED UNCLASSIFIED INFORMATION//BASIC

1. Incident Name: Dolan and Coleman Fires	2. Operational Period: Date From: 10/19/2020 Date To: 10/19/2020 Time From: 0700 Time To: 1900	3. Branch Division Coleman
4. Operations Personnel: Field Ops Section Chief: Joe Alyea Branch Director: Division/Group Supervisor: Mark Brown, B. Richwine (t)		Planning Ops: Keith Murphy Branch Safety: Air Attack:
Page 1 of 1		
5. Resources Assigned:		
Resources in BOLD are identified as IA resources		
Resource Identifier	ALS LWD	Leader Personnel Request # Hours Report to Return to
HC2IA VANDENBERG CREW 2	10/25	HENDRICKS, JESSE 19 C-115 0700-1900 Mission ICP Mission ICP
HC2 BLACK EAGLES	10/29	BEDOLLA, REYES 21 C-126 0700-1900 Mission ICP Mission ICP
HC2 PACIFIC OASIS	10/30	MAZA, JASON 20 C-123 0700-1900 Mission ICP Mission ICP
HC2 R&R CONTRACTING	10/23	IBARRA, ROGELIO 20 C-124 0700-1900 Mission ICP Mission ICP
ENG3 ENGINE 319 IA	10/19	HOLLOWAY, CHRIS 7 E-305 0700-1900 Mission ICP Mission ICP
ENG3 IN DUNES E-7852	10/22	RAMIREZ, BRANDON 5 E-143 0700-1900 Mission ICP Mission ICP
ENG4 ID TRAILBLAZERS	10/26	CRAWLEY, BRIAN 3 E-499 0700-1900 Mission ICP Mission ICP
ENG6 RKY PT E324	10/28	COLBRY, SETH 3 E-85 0700-1900 Mission ICP Mission ICP
ENG5 WILDLAND FIRE E7	10/26	WIMER, MATT 3 E-227 0700-1900 Mission ICP Mission ICP
WTS1 A1	10/28	DALE, ELEVATORSKI 2 E-599 0700-1900 Mission ICP Mission ICP
WTS3 KMT	10/28	TULL, KIM 2 E-598 0700-1900 Mission ICP Mission ICP
DOZ2 FHL 8894	10/29	ROSA, RON 1 E-583 0700-1900 Mission ICP Ft Hunter Liggett
DOZ2 LPF	10/26	FEURCK, MIKE 3 E-572 0700-1900 Mission ICP Mission ICP
DOZ2 ENF	10/26	LANDGENDER, DAN 2 E-576 0700-1900 Mission ICP Mission ICP
TFLD WOODY	10/29	WOODY, DAVID 1 O-1253 0700-1900 Mission ICP Mission ICP
HEQB GORDY DOD-FT HUNTER LIGGETT		GORDY, KEVIN 1 Mission ICP Ft Hunter Liggett
HEQB COLEMAN	10/30	COLEMAN, ALANI 1 O-1238 0700-1900 Mission ICP Mission ICP
HEQB(t) KENNER	10/19	KENNER, ANDREW 1 O-1235 0700-1900 Mission ICP Mission ICP
REMS 1 ANAHEIM FD	X 10/23	GUERRERO, PAUL 4 O-1181 0700-1900 Mission ICP Mission ICP

6. Work Assignments:
 TASK: Improve ingress and egress up into Section 16 and from DP76 into Section 16.
 PURPOSE: To safely move resources into the heel of the Coleman Fire.
 END STATE: Access to the hel of the Coleman Fire to continue suppression operations.
 RISK ASSESSMENT: In new country and operations on an emerging incident.

7. Special Instructions:
 -All medical resources MUST check in with Los Padres Dispatch and Division Supervisor once in place, see medical plan for REMS availability.
 -READs and the BAER Team will check in and out with Division.
 -Assume all divisions have Sudden Oak Death Pathogen and clean and disinfect everything. No weed wash is available use a commercial wash station where sump collection is done to prevent the further spread.
 -For Mop up and Patrol – Do not go off the road (UXO).
 -Utilize Collector to mark all accountable property (pumps, hose, tanks...), attach a picture of the serial number with the LAT and LONG.
 -INITIAL ATTACK RESOURCES will maintain a state of readiness for response. All responses will be initiated by operations through the divisions. Once the resource is cancelled/released they will return to the incident and notify comms that they are back in their division.

8. Communications							
Name	Ch	Function	Rx Freq	Rx Tone	Tx Freq	Tx Tone	Notes
FORNET 8	11	COMMAND - FOREST NET 8	170.4625	CSQ	164.9125	103.5	COMMAND COLEMAN FIRE
LP TAC 3	12	LP TACTICAL	168.2625	CSQ	168.2625	CQS	TACTICAL COLEMAN FIRE
COLE A/G	13	A/G	169.2000	CSQ	169.2000	CQS	AIR TO GROUND COLEMAN FIRE
CALCORD	15	MEDEVAC A/G	156.0750	156.7	156.0750	156.7	MEDICAL EVAC EMERGENCIES ONLY
GUARD 18	16	AIRGUARD	168.6250	CSQ	168.6250	110.9	EMERGENCIES ONLY

9. Prepared by: Name: Glenn Palmgren PSC2 (t) Signature: /s/ Glenn R. Palmgren

ASSIGNMENT LIST (ICS 204 WF)

CONTROLLED UNCLASSIFIED INFORMATION/BASIC

1. Incident Name: Dolan and Coleman Fires	2. Operational Period: Date From: 10/19/2020 Date To: 10/19/2020 Time From: 0700 Time To: 1900	3. Branch Group Staging
--	---	---

4. Operations Personnel:	
Field Ops Section Chief: Joe Alyea	Planning Ops: Keith Murphy
Branch Director:	Branch Safety:
Division/Group Supervisor:	Air Attack:

5. Resources Assigned:		***Resources in BOLD are identified as IA resources***							
Resource Identifier	ALS	LWD	Leader	Personnel	Request #	Hours	Report to	Return to	
ENG3 CA-FHL E8833		10/25	FRYER, GREG	5	E-455	0700-1900	Mission ICP	Mission ICP	
ENG3 LPF-E315 IA		10/19	VALENTIN, NICK	5	E-22	0700-1900	Mission ICP	Mission ICP	
DOZ2 CM CONSTRUCTION		10/29	EDSALL, STEVEN	2	E-582	0700-1900	Mission ICP	Mission ICP	

6. Work Assignments:
Resources are staged to rest due to IA work the night before.
Planning Ops will assign work.

7. Special Instructions:

8. Communications							
Name	Ch	Function	Rx Freq	Rx Tone	Tx Freq	Tx Tone	Notes
Refer to the Communications plan for TX/RX frequencies. Local forest is responsible for controlling all radio traffic.							

9. Prepared by: Name: Glenn Palmgren PSC2 (t)
Signature: /s/ Glenn R. Palmgren

CONTROLLED UNCLASSIFIED INFORMATION/BASIC

AIR OPERATIONS SUMMARY (ICS 220)

1. Incident Name:		2. Operational Period: Date From: _____ Date To: _____ Time From: _____ Time To: _____				3. Sunrise: _____ Sunset: _____	
4. Remarks (safety notes, hazards, air operations special equipment, etc.):			5. Ready Alert Aircraft: Medivac: _____ New Incident: _____			6. Temporary Flight Restriction Number: Altitude: _____ Center Point: _____	
			8. Frequencies:		AM	FM	9. Fixed-Wing (category/kind/type, make/model, N#, base): Air Tactical Group Supervisor Aircraft:
			Air/Air Fixed-Wing				
7. Personnel:	Name:	Phone Number:	Air/Air Rotary-Wing – Flight Following				
Air Operations Branch Director			Air/Ground				
Air Support Group Supervisor			Command			Other Fixed-Wing Aircraft:	
Air Tactical Group Supervisor			Deck Coordinator				
Helicopter Coordinator			Take-Off & Landing Coordinator				
Helibase Manager			Air Guard				
10. Helicopters (use additional sheets as necessary):							
FAA N#	Category/Kind/Type	Make/Model	Base	Available	Start	Remarks	
11. Prepared by: Name: _____ Position/Title: _____ Signature: _____							
ICS 220, Page 1			Date/Time: _____				

INCIDENT RADIO COMMUNICATIONS PLAN I-205		1. INCIDENT NAME		2. DATE/TIME PREPARED		3. OPERATIONAL PERIOD DATE/TIME					
		Dolan Fire		10/18/2020 18:40:00 PM		10/19/2020 Day Shift					
4. BASIC RADIO CHANNEL UTILIZATION											
Ch #	Function	Channel Name	Assignment	RX Freq	N/W	RX Tone/NAC	TX Freq	N/W	TX Tone/NAC	Mode Analog (A) Digital (D) Mixed (M)	Remarks
1	COMMAND	LPF AN4	ALL DIVISIONS	171.5500	N	CSQ	164.1500	N	136.5	A	LPF ADMIN NET ALDER PK T4 CONTACT FOREST DISP NW OF FIRE
2	COMMAND	LPF AN6	ALL DIVISIONS	171.5500	N	CSQ	164.1500	N	156.7	A	LPF ADMIN NET PIEDRAS BLANCAS T6 FOREST DISPATCH SOUTH OF FIRE
3	COMMAND	LPF AN8	ALL DIVISIONS	171.5500	N	CSQ	164.1500	N	103.5	A	LPF ADMIN NET CONE PK T8 ALL DIVISIONS CONTACT FOREST DISP
4	COMMAND	LPF AN10	ALL DIVISIONS	171.5500	N	CSQ	164.1500	N	107.2	A	LPF ADMIN NET CHEWS RIDGE T10 DIVISION AF/K CONTACT FOREST DISP
5	COMMAND	LPF AN13	ALL DIVISIONS	171.5500	N	CSQ	164.1500	N	141.3	A	LPF ADMIN NET ANDERSON T13 DIVISION AF/K CONTACT FOREST DISP
6	COMMAND	LPF AN15	ALL DIVISIONS	171.5500	N	CSQ	164.1500	N	162.2	A	LPF ADMIN NET CALANDRA T15 FOREST DISPATCH EAST OF FIRE
7	TACTICAL	LPF T4	ALL DIVISIONS	163.7125	N	CSQ	163.7125	N	CQS	A	LPF TACTICAL - ALL DIVISIONS DOLAN FIRE
8	TACTICAL	NIFC T2	NOT ASSIGNED	168.2000	N	CSQ	168.2000	N	CQS	A	NIFC T2
9	A/G TACTICAL	A/G TAC	ALL DIVISIONS	163.1500	N	CSQ	163.1500	N	CQS	A	A/G TAC DOLAN FIRE
10	A/G COMMAND	A/G CMD	ALL DIVISIONS	167.5500	N	CSQ	167.5500	N	CQS	A	A/G CMD DOLAN FIRE
11	FOREST NET 8	FORNET 8	COLEMAN CMD	170.4625	N	CSQ	164.9125	N	103.5	A	COMMAND COLEMAN FIRE
12	LP TACTICAL	LP TAC 3	COLEMAN TAC	168.2625	N	CSQ	168.2625	N	CQS	A	TACTICAL COLEMAN FIRE
13	A/G	COLE A/G	COLEMAN A/G	169.2000	N	CSQ	169.2000	N	CQS	A	AIR TO GROUND COLEMAN FIRE
14											
15	MEDEVAC A/G	CALCORD	ALL DIVISIONS	156.0750	N	156.7	156.0750	N	156.7	A	MEDICAL EVAC EMERGENCIES ONLY
16	AIRGUARD	GUARD 18	ALL DIVISIONS	168.6250	N	CSQ	168.6250	N	110.9	A	EMERGENCIES ONLY
5. Special Instructions:											
6. I-205 Prepared By: Communications Unit Leader				Name: Peter Willis COML				Signature: <i>Peter Willis</i>			

EA IMT - Silver Contact List

POSITION	NAME	Contact Number	
Incident Command			
ICT2	Steve Goldman	414-308-7775	
ICT2(t)	Lucas Minton	928-707-1940	
Safety			
SOF2	Chris Woods	573-315-8394	
MEDL	Mike Passarelli	330-352-7534	
Public Information			
PIO2	Micah Bell	219-405-0125	
Liason			
LOFR	Roger Goldman	812-340-4266	
Operations			
OSC2	Keith Murphy	906-250-1382	
OSC2	Joe Alyea	989-305-1227	
DIVS	Mark Brown	207-233-9348	
DIVS	Mike Rice	218-368-2087	
DIVS(t)	Rob Shields	906-630-5092	
DIVS(t)	Patrick Johnson	218-370-0321	
Aviation			
Planning			
PSC2(t)	Glenn Palmgren	517-243-3487	
SITL(t)	Ben Garrett	715-579-3056	
GISS	Matt Judd	651-587-1351	
ITSS	Bill Whitacre	573-578-1889	
Logistics			
LSC2(t)	Tim Oland	608-799-1805	
FACL	Dave Avery	218-370-9805	
BCMG	Mike Johnson	218-235-9063	
ORDM	Chris Adamcik	936-238-8819	
	Orders: cell: 936-238-8819	desk: 936-875-4803	
COML	Peter Willis	320-630-3193	
EQPM	Mike Trierweiler	218-343-9371	
Finance			
FSC2	Peter Beringer	603-970-1338	
FSC2(t)	Deb Niles	989-745-2394	
TIME	Mary Coleman	573-210-7073	
TIME(t)	Valarie Sanchez	505-269-7808	
PTRC	Rosemary Johnson	218-252-2363	
Important Emails			
Ordering	fire.ordering@gmail.com	cell: 936-238-8819	desk: 936-875-4803
Finance Unit	2020.dolan.finance@firenet.gov		
Demob Unit	2020.dolan.dmob@firenet.gov		
Resource Unit	2020.dolan.resources@firenet.gov		
Situation Unit	2020.dolan.situation@firenet.gov		

MEDICAL PLAN ICS 206	1. INCIDENT NAME	2. DATE PREPARED	3. TIME PREPARED	4. OPERATIONAL PERIOD				
	Dolan Fire	10/18/2020	1800	10/19/2020, 0600-2200				
5. INCIDENT MEDICAL AID STATIONS								
MEDICAL AID STATIONS	LOCATION					PARAMEDICS		
						YES	NO	
Medical Unit	ICP						X	
6. TRANSPORTATION								
A. AIR AMBULANCES								
NAME	LOCATION	PHONE			PARAMEDICS			
					YES	NO		
911 Provider Day-Night Mission	Variable - (40 min ETA)	Los Padres ECC 805-961-5727			X			
CHP H70 Hoist Day / Variable Night	Paso Robles, CA - (20 min ETA)	Paso Robles ECC 805-239-3553			X			
Mercy Air Night	FHL, CA - (10 min ETA)	FHL ECC 831-386-2526			X			
B. GROUND AMBULANCES & REM TEAMS								
NAME	LOCATION					PARAMEDICS		
						YES	NO	
AMR 2	DP 72					X		
REMS 1	DP 59					X		
REMS 2	Coleman Group						X	
Atascadero Ambulance	DP-8					X		
Melanie Miller EMT-P	Tusi Helibase					X		
7. HOSPITALS								
NAME	ADDRESS	TRAVEL TIME		PHONE	HELIPAD		BURN CTR	
		AIR	GRND		YES	NO	YES	NO
CHOMP LVL 3	23625 Holman Hwy Monterey, CA	N/A	30 Min	831-624-5311		X		X
Mee Memorial LVL 3	300 Canal St King City, CA	15 Min	60 Min	831-385-6000	X			X
Santa Clara Valley Med Ctr LVL 1	751 S. Bascom Ave.. San Jose, CA NN37 18.7713 X 121 55.9960	45 Min	90 Min	408-885-5000	X		X	
Natividad Medical Center LVL 2	1441 Constitution Blvd. Salinas Ca N36 41.8002 X W121 37.9853	25 Min	60 Min	831-755-6268	X			
Community Regional Med Ctr LVL 1	2823 Fresno St. Fresno, Ca N36 44.5702 X W119 47.0913	90 Min	180 Min	559-459-7401	X		X	
Big Sur Health Center Medical Clinic	46968 CA-1 Big Sur, CA 93920	N/A	60 Min	831-667-2580		X		X
8. MEDICAL EMERGENCY PROCEDURES								
<u>LINE-EMERGENCY MEDICAL DAY PLAN 0700 - 1930:</u>				<u>LINE "NON-EMERGENCY INCIDENT" DAY PLAN:</u>				
<p>- Crew Supervisor to contact Division Supervisor/Operations with:</p> <ul style="list-style-type: none"> Patient Complaint, Condition and Location via Tactical or Command frequency. Priority 1/Red & 2/Yellow Patients trigger Incident within Incident (IWI). <p>- Division Supervisor/Operation contacts Los Padres Communications:</p> <ul style="list-style-type: none"> Division Supervisor or POC* will run "Medical –Emergency" on the Los Padres frequency. Division Supervisor or POC* to use "Medical Incident Report" worksheet on back of this page or back of IRPG. Los Padres Communication contacts Medical Unit Leader on the Command frequency or camp frequency. <p>POC* (Point of Contact) and/or Operations</p>				<p>- Crew Supervisor to contact Division Supervisor with:</p> <ul style="list-style-type: none"> Patient Complaint, Condition and Location via Tactical or Los Padres frequency. Priority 3/Green Patients do not trigger Incident within Incident (IWI). <p>- Division Supervisor contacts Los Padres Communications:</p> <ul style="list-style-type: none"> Division Supervisor or POC* will run "Non-Emergency Incident" on the Los Padres frequency. Division Supervisor or POC* will use "Medical Incident Report" worksheet on the back of this page or back of IRPG. Los Padres Communications contacts Medical Unit Leader on the Command frequency or camp frequency. 				
				<u>AFTER HOUR MEDICAL PLAN 1930 - 0700:</u>				
				<p>- Contact AMR Dispatch at 911 or 831-796-6444, then MEDL who will be in the medical tent during the night.</p>				
ICS 206	9. PREPARED BY: (Medical Unit Leader) Mike Passarelli MEDL			10. REVIEWED BY: (Safety Officer) Chris Woods SOF2(t)				

COVID-19 Best Practices / Mitigation

Minimize risk and limit exposure to COVID-19 by daily screening, minimizing large group settings, social distancing, wearing face coverings, hand washing, and practicing module of one concept.

At the beginning of the shift, supervisors should remind their personnel to self-screen for symptoms.

This document to be placed in the daily IAP

WILDLAND FIRE COVID-19 SCREENING TOOL

Today or in the past 24 hours, have you had any of the following symptoms¹?

Symptom
Cough more than expected?
Shortness of breath or difficulty breathing?
Fever? Chills?
Muscle pain, outside your normal for firefighting?
Sore throat?
New loss of taste or smell?
Fatigue, outside your normal for firefighting?
Headache, outside your normal for firefighting?
Congestion or runny nose, outside your normal for firefighting?
Nausea or vomiting
Diarrhea
<i>* Take temperature with no-touch thermometer, if available *</i>

¹Symptoms of Coronavirus

<https://www.cdc.gov/coronavirus/2019-ncov/symptoms-testing/symptoms.html>

Do your part to minimize your risk of exposure and limit the spread COVID-19.

Public Considerations

- ⇒ Wear a face covering when in public.
- ⇒ Wash your hands often.
- ⇒ Use hand sanitizer after pumping gas.
- ⇒ Use hand sanitizer prior to getting into your vehicle after visiting the grocery store or a restaurant.
- ⇒ Set the example while in the public eye.

*Keep in mind that fire camp is in a city with a populous and the potential for the COVID virus to be present is greater.

If you answered Yes to these symptoms, report it to your supervisor immediately, self-isolate away from other people until given direction and call **MEDICAL**.



COVID-19 OPERATIONAL FLOWCHART

PERSONNEL SHALL BE SCREENED FOR S&S OF COVID-19 AT CHECK-IN ← *ALL SUPERVISORS SHALL MONITOR THEIR PERSONNEL*

- ALL PERSONNEL SHALL:**
- PRACTICE PHYSICAL DISTANCING
 - WEAR A MASK WHEN LESS THAN 6' FROM OTHERS
 - SHALL SELF-MONITOR FOR S&S
 - WASH HANDS OFTEN / USE HAND SANITIZER
 - AVOID FACIAL CONTACT WITH YOUR HANDS
 - NOTIFY THE MEDICAL UNIT OF ANY FLU-LIKE S&S
 - DO NOT SHARE TOOLS / EQUIPMENT

- SIGNS & SYMPTOMS INCLUDE:**
- CHILLS OR FEVER > 100.4°
 - COUGH, AND/OR SHORT OF BREATH
 - LOSS OF TASTE OR SMELL, SORE THROAT
 - CONGESTION, RUNNY NOSE
 - FATIGUE, HEADACHE, BODY ACHES
 - NAUSEA OR VOMITING
- (Do not report to your assignment if you are sick)*

- PERSONNEL WHO DEVELOP FLU-LIKE SYMPTOMS SHALL:**
- NOTIFY THEIR IMMEDIATE SUPERVISOR
 - REPORT TO THE MEDICAL UNIT FOR EVALUATION

- MEDICAL UNIT WILL:**
- EVALUATE PERSONNEL / MAKE RECOMMENDATIONS
 - TRACK PERSONNEL FOR THE INCIDENT
- CONTACT-TRACING
 - MAKE NECESSARY *TEAM & FOREST* NOTIFICATIONS

- PERSONNEL EXPERIENCING FLU-LIKE SYMPTOMS SHALL BE TESTED:**
- SEEK MEDICAL CARE FOR FURTHER TESTING (TESTING SITES PROVIDED BY THE MEDL)
 - AFTER TESTING IS COMPLETE, PERSONNEL MAY HAVE TO QUARANTINE WHILE AWAITING RESULTS

- IF COVID-POSITIVE:**
- PERSONNEL SHALL ISOLATE AT APPROVED LOCATION UNTIL DEMOB'D (LOCATION PROVIDED BY THE MEDL)

- IF NEGATIVE:**
- FOLLOW AGENCY SPECIFIC GUIDELINES
 - OR, PER CDC, NO FURTHER ACTION REQUIRED

- SUPERVISOR SHOULD:**
- MAKE NOTIFICATIONS TO HOME UNIT
 - BEGIN AGENCY WORK-COMP PROCESS
 - COMPLETE DEMOB PROCESS

PERSONNEL: CONTINUE TO SELF -MONITOR
*(Do not report to your assignment if you are sick)
IF PERSONNEL IS TOO SICK, NOTIFY SUPERVISOR*

IMT WILL PROVIDE DIRECTION AND SUPPORT UNTIL RECEIVED BY THE HOME UNIT

FDNY IMT - MEDICAL UNIT WILL TRACK AND MONITOR ALL COVID RELATED EXPOSURES

IN-CAMP ISOLATION FLOWCHART:

- IN-CAMP GUIDELINES AS FOLLOWS:**
- PERSONNEL SHALL ISOLATE AT APPROVED LOCATION ONCE EVALUATED BY MEDICAL STAFF
 - MEDICAL UNIT WILL MONITOR PERSONNEL UNTIL DEMOBILIZED FROM THE INCIDENT

SHOULD PERSONNEL'S HEALTH STATUS DETERIORATE, CONTACT THE MEDICAL UNIT ASAP

- MEDICAL UNIT SHALL:**
- CONTACT COMMUNICATIONS - ARRANGE FOR TRANSPORTATION TO HOSPITAL IF NEEDED
 - CALL THE IMMEDIATE SUPERVISOR
 - MAKE NECESSARY TEAM & FOREST NOTIFICATIONS

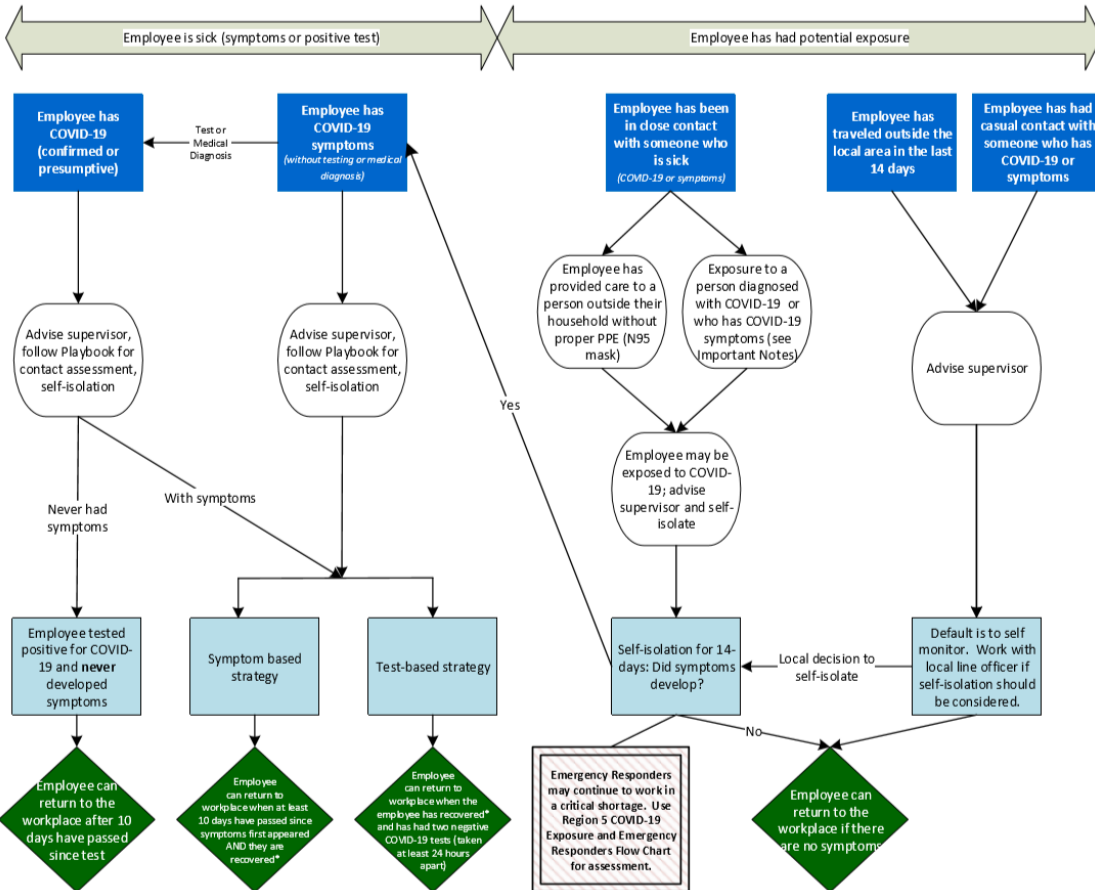
FEDERAL EMPLOYEES SHALL REFER TO REGION 5 — COVID-19 ACTION PROCESS FOR AGENCY SPECIFIC GUIDANCE



Region 5 Pacific Southwest Region COVID-19 Response Action Process

August 20, 2020

COVID-19 Response and Employee Notification



Important Notes:

- * Recovered is defined as 10 days since symptoms first appeared AND 24 hours with no fever without the use of fever-reducing medicines AND other symptoms of COVID-19 are improving.
- Symptoms of COVID-19 include cough, shortness of breath, trouble breathing, fever, chills, repeated shaking with chills, muscle or body aches, headache, sore throat, new loss of taste or smell, congestion or runny nose, nausea or vomiting, or diarrhea.
- Contact Assessment should be conducted to help determine potential exposure of additional employees; conduct assessment for the 2-day period before illness onset or test date of sick employees, whichever came first.
- Close contact is defined as less than 6 feet, for at least 15 minutes with or without face coverings/masks. Casual contact is defined as less than 6 feet for less than 15 minutes or more than 6 feet for more than 15 minutes.
- Any employee in "close contact with someone who is sick" may return to the workplace if the sick person is tested for COVID-19 and the test is negative.
- Contact with exposed individuals is classified as secondary contact and does not typically require self-isolation unless the exposed individual tests positive.
- You do not need to self-isolate unless you meet one of the criteria identified.
- Always follow the advice of a medical provider, if given, including any need for isolation or clearance for return-to-duty.

This document is subject to change based on CDC guidance.

Dolan Fire – Safety Message

INCIDENT: Dolan, CA-LPF-002428

DATE: 10/19/20 TIME: 0700-1930

Firefighter Fatigue/Driver Safety

With continued physically demanding operational periods, expect and predict fatigue of all crew members working in and around your division. Take the following steps to limit and address fatigue and driver safety:

1. Follow work/rest guidelines & take breaks as needed.
2. Supervisors assess the fatigue levels of your crews during operational periods.
3. Ask/tell if you are physically unable to complete a task or assignment.
4. Exercise extreme caution when driving in low visibility situations due to smoke + **lights on and seat belts at all times!**
5. Be aware for evacuees also using roadway
6. **Reduce vehicle speed—especially on winding interior roads where excessive traffic has deteriorated condition**

Communications

1. Ensure all resources are effectively briefed on the communications plan, radios are cloned & comms. check conducted
2. **Utilize human repeaters where radio coverage is questionable/unreliable**
3. Apply LCES based on accurate situational awareness and close the communication loop

ATV/UTV Use

1. Ensure equipment is inspected and safe to use.
2. Ensure operator is trained and certified to operate.
3. Ensure operator has proper PPE and is wearing it consistently according to the Redbook and/or RMA.
4. Question if the vehicle's use is mission critical.

Heat Related Illness

To avoid dehydration and heat related illness including heat stroke, heat exhaustion, and heat cramps:

1. Drink at least 1 quart of water/hour to ward off dehydration and drink at least two times more water than sports drinks.
2. The darker in color your urine is, the more dehydrated you are
3. Set a reasonable work pace and allow adequate rest breaks.
4. Follow work/rest guidelines.
5. Use buddy system to monitor personnel of heat related & fatigue issues.
6. Be aware for respiratory challenges due to smoke



Don't Forget to Use Your IRPG

Common Denominators of Tragedy Fires – IRPG pg. 5

Risk Management:

- Apply risk management process to all operations (IRPG pg. 1)

After Action Review (AAR) – IRPG pg. xiii

Indirect Fireline:

- Post lookouts, identify escape routes and safety zones (IRPG pg. 7)
- Review Common Tactical Hazards (IRPG pg. 6)

Human Factors:

- Distractions & fatigue (IRPG pg. xi)
- Stress Reactions & Hazardous Attitudes (IRPG pg. xii)

Safety Officer: Chris Woods, SOF2(t)

DIRECTIONS FOR FILLING OUT A CTR/SHIFT TICKET AND SUBMITTING THEM ELECTRONICALLY

Financial Information:

Fire Name: Dolan

Fire Number: CA-LPF-002428 / P5NF6M20 (0507)

Fire Office Responsible for Fire: Los Padres Nation Forest

Remarks Section of CTR or Shift Ticket: Your phone # and email

Finance Email: 2020.dolan.finance@firenet.gov

Finance Documents Needed (If Not Already Submitted):

Overhead:	Cooperator:
<ul style="list-style-type: none">• Resource Order• AD Hire Form (If an AD)• CTR's	<ul style="list-style-type: none">• Cooperative Agreement• Resource Order• Shift Ticket

Please send in your CTR or Shift Ticket daily. You can:

1. Send a hard copy of CTR or Shift Ticket
2. Take a picture of signed CTR or Shift ticket and email in (Please place your O# or E# in the subject line of your email)
3. Use QR code to download a fillable CTR or Shift Ticket and email signed copy in

For Finance assistance please contact:

Mary Coleman at (573) 210-7073

Or (916) 798-3083

QR Codes for:

Finance Email



Finance Check-in



Fillable CTR & Shift Ticket



On **Monday, October 19** and **Tuesday October 20**, the **Nacimiento-Ferguson Road** will be closed from 10:00 until approximately 16:00 each day due to removal of a Dozer and Engine that were burned during fire activities. The closure will be from the Nacimiento Fire Station approximately one mile both directions.

Communications will be contacted upon completion of removal and re-opening of the road.



10/19/2020

TENTATIVE RELEASE

DOLAN US-CA-LPF-002428

EQUIPMENT

E-133	0800	(STK)	STAKESIDE -TYPE 1 - PHILLIP
E-561	0830	(ENG6)	CA-MTO-ENG6-691
E-562	0900	(ENG6)	CA-STB-ENG6-ENG 673
E-565	0930	(ENG6)	AZ-PPL-ENG6-BR81
E-556	1000	(WTT2)	CA-LPF-WTT2-WT3
E-359	1030	(MEC)	MISC - SERVICE TRUCK W/
E-358	1100	(MEC)	MISC - SERVICE TRUCK W/

OVERHEAD

O-1171	0730	(TFLD)	PECOS, MATTHEW
O-1172	0800	(ICT3)	MONTES, VINCENT W
O-1066	0830	(SEC1)	KARNATZ, STEPHEN P
O-1235	0900	(HEQB)	KENNER, ANDREW
O-1162	1800	(SOFR)	ZAVALLA, ANTHONY

10/21/2020

TENTATIVE RELEASE

DOLAN US-CA-LPF-002428

EQUIPMENT

E-567	0000	(EXCA)	MISC - EXCAVATOR, T2 -
E-22	0900	(ENG3)	LPF-E315

OVERHEAD

O-1145	0000	(DIVS)	THIBAULT, ROB
--------	------	--------	---------------

10/20/2020

TENTATIVE RELEASE

DOLAN US-CA-LPF-002428

EQUIPMENT

E-305	0000	(ENG3)	LPF E-319
E-499	0000	(ENG4)	IDAHO TRAILBLAZERS
E-548	0000	(EXCA)	MISC - EXCAVATOR, T2 - 1FF18
E-566	0000	(PU)	TRANSPORTATION - PICKUP -

OVERHEAD

O-1173	0000	(DIVS)	COOK, HAROLD L
O-1099	0000	(SOF2)	KAISER, BRENT W
O-1174	0000	(DIVS)	STEPHENSON, PETER D

ACTIVITY LOG (ICS 214)

1. Incident Name:		2. Operational Period: Date From: _____ Date To: _____ Time From: _____ Time To: _____	
3. Name:		4. ICS Position:	5. Home Agency (and Unit):
6. Resources Assigned:			
Name		ICS Position	Home Agency (and Unit)
7. Activity Log:			
Date/Time	Notable Activities		
8. Prepared by: Name: _____ Position/Title: _____ Signature: _____			
ICS 214, Page 1		Date/Time: _____	

MEDICAL PLAN (ICS 206 WF)

Controlled Unclassified Information//Basic

Medical Incident Report

FOR A NON-EMERGENCY INCIDENT, WORK THROUGH CHAIN OF COMMAND TO REPORT AND TRANSPORT INJURED PERSONNEL AS NECESSARY.

FOR A MEDICAL EMERGENCY: IDENTIFY ON SCENE INCIDENT COMMANDER BY NAME AND POSITION AND ANNOUNCE "MEDICAL EMERGENCY" TO INITIATE RESPONSE FROM IMT COMMUNICATIONS/DISPATCH.

Use the following items to communicate situation to communications/dispatch.

1. CONTACT COMMUNICATIONS / DISPATCH (**Verify correct frequency prior to starting report**)

Ex: "Communications, Div. Alpha. Stand-by for Emergency Traffic."

2. INCIDENT STATUS: *Provide incident summary (including number of patients) and command structure.*

Ex: "Communications, I have a Red priority patient, unconscious, struck by a falling tree. Requesting air ambulance to Forest Road 1 at (Lat./Long.) This will be the Trout Meadow Medical, IC is TFLD Jones. EMT Smith is providing medical care."

Severity of Emergency / Transport Priority	<input type="checkbox"/> RED / PRIORITY 1 Life or limb threatening injury or illness. Evacuation need is IMMEDIATE <i>Ex: Unconscious, difficulty breathing, bleeding severely, 2° – 3° burns more than 4 palm sizes, heat stroke, disoriented.</i> <input type="checkbox"/> YELLOW / PRIORITY 2 Serious Injury or illness. Evacuation may be DELAYED if necessary. <i>Ex: Significant trauma, unable to walk, 2° – 3° burns not more than 1-3 palm sizes.</i> <input type="checkbox"/> GREEN / PRIORITY 3 Minor Injury or illness. Non-Emergency transport <i>Ex: Sprains, strains, minor heat-related illness.</i>	
Nature of Injury or Illness & Mechanism of Injury		<i>Brief Summary of Injury or Illness (Ex: Unconscious, Struck by Falling Tree)</i>
Transport Request		<i>Air Ambulance / Short Haul/Hoist Ground Ambulance / Other</i>
Patient Location		<i>Descriptive Location & Lat. / Long. (WGS84)</i>
Incident Name		<i>Geographic Name + "Medical" (Ex: Trout Meadow Medical)</i>
On-Scene Incident Commander		<i>Name of on-scene IC of Incident within an Incident (Ex: TFLD Jones)</i>
Patient Care		<i>Name of Care Provider (Ex: EMT Smith)</i>

3. INITIAL PATIENT ASSESSMENT: *Complete this section for each patient as applicable (start with the most severe patient)*

Patient Assessment: See IRPG page 106

Treatment:

4. TRANSPORT PLAN:

Evacuation Location (if different): *(Descriptive Location (drop point, intersection, etc.) or Lat. / Long.)* Patient's ETA to Evacuation Location:

Helispot / Extraction Site Size and Hazards:

5. ADDITIONAL RESOURCES / EQUIPMENT NEEDS:

Example: Paramedic/EMT, Crews, Immobilization Devices, AED, Oxygen, Trauma Bag, IV/Fluid(s), Splints, Rope rescue, Wheeled litter, HAZMAT, Extrication

6. COMMUNICATIONS: Identify State Air/Ground EMS Frequencies and Hospital Contacts as applicable

Function	Channel Name/Number	Receive (RX)	Tone/NAC *	Transmit (TX)	Tone/NAC *
COMMAND					
AIR-TO-GRND					
TACTICAL					

7. CONTINGENCY: **Considerations:** *If primary options fail, what actions can be implemented in conjunction with primary evacuation method? Be thinking ahead.*

8. ADDITIONAL INFORMATION: *Updates/Changes, etc.*

REMEMBER: Confirm ETA's of resources ordered. Act according to your level of training. Be Alert. Keep Calm. Think Clearly. Act Decisively.