

INCIDENT ACTION PLAN

DOLAN AND COLEMAN FIRES

CA-LPF-002428 and CA-LPF-003161



PHONE BRIEFING FOR SPIKED AND REMOTE RESOURCES
CALL 888-844-9904 - ENTER PASSCODE 4808672#

Wednesday
10/21/2020
0700 - 1900



INCIDENT OBJECTIVES (ICS 202)

1. Incident Name: Dolan and Coleman Fires	2. Operational Period:	Date From: 10/21/2020 Time From: 0700	Date To: 10/21/2020 Time To: 1900
---	-------------------------------	--	--------------------------------------

3. Objective(s):

LEADERS INTENT

Continue a full suppression strategy on the Dolan and Coleman Fires. Values at risk include human safety, private property, National Scenic Byway (Highway 1), Fort Hunter Liggett improvements, and wilderness values. Apply tactics that offer the highest probability of success. Identify, develop and prepare contingency measures in a proactive fashion. Develop and maintain an accurate and timely information sharing process for high values at risk.

MANAGEMENT OBJECTIVES

Provide for firefighter and public safety through hazard recognition and risk management.

Minimize risk and limit exposure by following COVID-19 best management practices.

Minimize or avoid impacts to wilderness values by applying minimum impact suppression tactics (MIST).

Utilize incident resource advisors to minimize impacts on natural and cultural resources.

Distribute accurate and timely fire information to cooperators, the public, and stakeholders.

Manage resources to meet protection objectives while maintaining fiscal accountability.

CONTROL OBJECTIVES

Minimize risk to private property, surrounding communities, and resource values by:

Maintaining the Dolan Fire within existing perimeter.

Provide for suppression repair where most advantageous with existing resources.

Utilize technology to manage risks to infrastructure, values at risk to guide aggressive mop up, control and suppression repair tactics.



Conduct direct attack on the Coleman Fire when possible focusing on the north, south, and east flanks to protect values at risk. Construct indirect fireline if direct attack is not feasible.

5. Site Safety Plan Required? Yes No

Approved Site Safety Plan(s) Located at:

6. Incident Action Plan

√ ICS 203	√ ICS 206	√ DEMOB Message
√ WX	√ COVID-19	√ ICS 214
√ ICS 204	√ ICS 208	√ MIR 9 LINE
√ ICS 220	√ Finance Message	
√ ICS 205	√ PIO Message	

7. Prepared By:	Glenn Palmgren	Position/Title: PSC2 (t)	Signature: 
8. Approved by Incident Commander:	Steve Goldman	Signature:	

Fire Weather Forecast

FORECAST NO: 55
PREDICTION FOR: DAYSHIFT

NAME OF FIRE: Dolan-Coleman CA-LPF-2428
UNIT: Los Padres National Forest

SHIFT DATE: 21 Oct 2020
TIME AND DATE
FORECAST ISSUED: 1900 / 20 October

SIGNED: 
Incident Meteorologist

WEATHER DISCUSSION: Strengthening onshore flow for the next couple of days will bring slightly cooler air today and even cooler air Thursday, with a slight increase in humidity. Skies will stay clear.

WEATHER FORECAST:

WEATHER: Sunny.

TEMPERATURE: Inland high 78 to 86. Coast high 70 to 76.

HUMIDITY: 2000ft elevation minimum 18 to 24 percent. Coast minimum 24 to 30 percent.

20 FT WIND:

INLAND - Northeast 2 to 7 mph gusts to 12 mph, by 1400 becoming northwest 3 to 8 mph gusts to 14 mph.

COAST - Northeast 2 to 6 mph, by 1100 becoming west 2 to 8 mph gusts to 14 mph.

HAINES INDEX: 5 Moderate.

LIGHTNING ACTIVITY LEVEL: 1.

STABILITY/INVERSION: Inversion around 2500ft elevation, lifting to 5900ft by 1700.

OUTLOOK FOR TONIGHT: Clear. Low temperature: Coast 49 to 57. Inland 44 to 52. Maximum humidity: Coast 64 to 74 percent. Above 2000ft elevation 30 to 36 percent. Inland wind north 3 to 8 mph gusts to 14 mph, by 2100 becoming northeast 1 to 5 mph. Coast wind west 2 to 8 mph gusts to 14 mph, by 2300 becoming northeast 2 to 6 mph.

OUTLOOK FOR THURSDAY: Sunny. High temperature: Inland 74 to 82. Coast 64 to 72. Minimum humidity: Above 2000ft elevation 20 to 26 percent. Coast 42 to 48 percent. Inland wind north 1 to 4 mph by 1100 becoming southwest 2 to 6 mph. Coast wind northeast 2 to 6 mph, by 1100 becoming southwest 3 to 8 mph gusts to 15 mph.

EXTENDED FORECAST: **Friday:** .Partly cloudy. Southwest winds up to 10 mph. Lows in the upper 40s to upper 50s. Highs in the upper 60s and 70s. **Saturday:** Partly cloudy. West winds up to 10 mph. Lows in the upper 40s to upper 50s. Highs in the mid 60s to mid 70s.

OBSERVATIONS:

Observations from Monday afternoon/Tuesday morning

Location/Elevation:	Low Temp:	High Temp:	Max. RH	Min. RH	Rainfall
Hunter-Liggett RAWWS/1116ft	47	94	72%	13%	0.00
South Coast Ridge IRAWS/3250ft	68	85	34%	16%	0.00

ORGANIZATION ASSIGNMENT LIST (ICS 203)

1. Incident Name: Dolan and Coleman Fires		2. Operational Period: Date From: 10/21/2020 Time From: 0700		Date To: 10/21/2020 Time To: 1900	
3. Incident Commander(s) and Command Staff:			7. Operation Section:		
IC/UC	Steve Goldman, Lucas Minton (t)	Field Ops	Joe Alyea		
	Larry "Mark" Alvarado (t)	Planning Ops	Keith Murphy		
Safety Officer	Chris Woods				
Information Officer	Micah Bell				
Liaison Officer	Roger Goldman				
4. Agency/Organization Representatives:			Branch		
Agency/Organization	Name	Division/Group	Suppression Repair	M.Rice, R.Shields(t), P.Johnson(t)	
Los Padres AREP	Nick Larson	Division/Group	Coleman	M. Brown, B. Richwine(t), G. Laird(t)	
Los Padres AREP COVID Advisor	Charles "CJ" Woodard	Division/Group	Staging		
Big Sur Fire Dep.	Matt Harris				
Fort Hunter Liggett	Jeff Manetti				
Monterey Sheriff	Ray Tongol				
CHP	M. Olta, John Yerace				
CA State Parks	Matthew Khalar				
PG&E	Geoff Money				
5. Planning Section:			Branch		
Chief	Glenn Palmgren (t)				
Resource Unit					
Situation Unit	Ben Garrett (t)				
Documentation Unit					
GISS	Matt Judd				
FBAN					
IMET	Jack Messick	Air Operations Branch			
Training Specialist		Air Operations Branch Director			
ITSS	Bill Whitacre, Brian Lynch (t)	Air Support Group Supervisor			
Lead READ	Kevin Keeler	Tusi Helibase Manager		John Kaisersatt	
6. Logistics Section			8. Finance/Administration Section:		
Chief	Jamie Copple, Tim Oland (t)	Chief	Peter Beringer, Deb Niles (t)		
Ordering Manager	Chris Adamcik	Time Unit	Mary Coleman, Valarie Sanchez (t)		
Facilities Unit	Dave Avery	Comp/Claims Unit			
Ground Support Unit		Cost Unit			
Communications Unit	Peter Willis	Personnel Time	Rosemary Johnson		
Medical Unit	Mike Passarelli	Equipment Time	Araceli Nahas		
Base Camp Manager	Mike Johnson				
COVID					
Prepared By: Name:	Glenn Palmgren	Position/Title:	PSC2 (t)	Signature: /s/ Glenn R. Palmgren	
ICS 203		Date/Time:	10/20/2020 2000	<small>NIMS IAP</small>	

ASSIGNMENT LIST (ICS 204 WF)

CONTROLLED UNCLASSIFIED INFORMATION/BASIC

1. Incident Name: Dolan and Coleman Fires		2. Operational Period: Date From: 10/21/2020 Date To: 10/21/2020 Time From: 0700 Time To: 1900			3. Branch Coleman		Division		
					Page 1 of 1				
4. Operations Personnel:				Field Ops Section Chief: Joe Alyea		Planning Ops: Keith Murphy			
				Branch Director:		Branch Safety:			
Division/Group Supervisor: M. Brown, B. Richwine(t), G. Laird(t)				Air Attack:					
5. Resources Assigned:				***Resources in BOLD are identified as IA resources***					
Resource Identifier	ALS	LWD	Leader	Personnel	Request #	Hours	Report to	Return to	
HCS1 9316G		11/1	ALEMAN, ALDO	30	C-1	1900-0700	Mission ICP	Mission ICP	
HCS1 9464G		11/2	MILTON, NICHOLAS	30	C-8	0700-1900	Mission ICP	Mission ICP	
HC2IA VANDENBERG CREW 2		10/25	HENDRICKS, JESSE	19	D C-115	0700-1900	Mission ICP	Mission ICP	
HC2IA COBRAS 1		11/2	PALAZUELOS, FRANCISCO	20	C-5	0700-1900	Mission ICP	Mission ICP	
HC2 BLACK EAGLES		10/29	BEDOLLA, REYES	21	D C-126	0700-1900	Mission ICP	Mission ICP	
HC2 PACIFIC OASIS		10/30	MAZA, JASON	20	D C-123	0700-1900	Mission ICP	Mission ICP	
HC2 R&R CONTRACTING		10/23	IBARRA, ROGELIO	20	D C-124	0700-1900	Mission ICP	Mission ICP	
ENG3 IN DUNES E-7852		10/22	RAMIREZ, BRANDON	5	D E-143	0700-1900	Mission ICP	Mission ICP	
ENG3 CA-FHL E8833		10/25	FRYER, GREG	5	D E-455	0700-1900	Mission ICP	Mission ICP	
ENG4 ID TRAILBLAZERS		10/26	CRAWLEY, BRIAN	3	D E-499	0700-1900	Mission ICP	Mission ICP	
ENG5 WILDLAND FIRE E7		10/26	WIMER, MATT	3	D E-227	0700-1900	Mission ICP	Mission ICP	
ENG6 RKY PT E324		10/28	COLBRY, SETH	3	D E-85	0700-1900	Mission ICP	Mission ICP	
ENG6 CA-STB E673		11/1	KENDALL, ROBERT	3	D E-562	0700-1900	Mission ICP	Mission ICP	
WTS1 A1		10/28	DALE, ELEVATORSKI	2	D E-599	0700-1900	Mission ICP	Mission ICP	
WTS3 KMT		10/28	TULL, KIM	2	D E-598	0700-1900	Mission ICP	Mission ICP	
DOZ2 FHL 8894		10/29	ROSA, RON	1	D E-583	0700-1900	Mission ICP	Ft Hunter Liggett	
DOZ2 LPF		10/26	FEURCK, MIKE	3	D E-572	0700-1900	Mission ICP	Mission ICP	
DOZ2 ENF		10/26	LANDGENDER, DAN	2	D E-576	0700-1900	Mission ICP	Mission ICP	
DOZ2 CM CONSTRUCTION		10/29	EDSALL, STEVEN	2	D E-582	0700-1900	Mission ICP	Mission ICP	
TFLD WOODY		10/29	WOODY, DAVID	1	D O-1253	0700-1900	Mission ICP	Mission ICP	
TFLD LACEY		11/3	LACEY, AARON	1	D O-1281	0700-1900	Mission ICP	Mission ICP	
HEQB GORDY DOD-FT HUNTER LIGGETT			GORDY, KEVIN	1		0700-1900	Mission ICP	Ft Hunter Liggett	
HEQB COLEMAN		10/30	COLEMAN, ALANI	1	D O-1238	0700-1900	Mission ICP	Mission ICP	
STEQ(t) DEAN		10/31	DEAN, STEVEN	1	D O-1236	0700-1900	Mission ICP	Mission ICP	
REMS 1 ANAHEIM FD	X	10/23	GUERRERO, PAUL	4	D O-1181	0700-1900	Mission ICP	Mission ICP	
EMPF COLOMBO		11/3	COLOMBO, ROGER	1	O-9	0700-1900	Mission ICP	Mission ICP	
6. Work Assignments:									
TASK: Construct containment line around the Coleman Fire.									
PURPOSE: Stop advancing fire in all directions.									
END STATE: Containment line around the entire fire and spread is stopped.									
RISK ASSESSMENT: Very steep terrain, heavy air operations, and emerging incident in wilderness.									
7. Special Instructions:									
-All medical resources MUST check in with Los Padres Dispatch and Division Supervisor once in place, see medical plan for REMS availability.									
-READs and the BAER Team will check in and out with Division.									
-Assume all divisions have Sudden Oak Death Pathogen and clean and disinfect everything. No weed wash is available use a commercial wash station where sump collection is done to prevent the further spread.									
-For Mop up and Patrol – Do not go off the road (UXO).									
-Utilize Collector to mark all accountable property (pumps, hose, tanks...), attach a picture of the serial number with the LAT and LONG.									
-INITIAL ATTACK RESOURCES will maintain a state of readiness for response. All responses will be initiated by operations through the divisions. Once the resource is cancelled/released they will return to the incident and notify comms that they are back in their division.									
8. Communications									
Name	Ch	Function	Rx Freq	Rx Tone	Tx Freq	Tx Tone	Notes		
LPF AN4	1	COMMAND	171.5500	CSQ	164.1500	136.5	LPF ADMIN NET ALDER PK T4		
LPF AN6	2	COMMAND	171.5500	CSQ	164.1500	156.7	LPF ADMIN NET PIEDRAS BLANCAS T6		
LPF AN8	3	COMMAND	171.5500	CSQ	164.1500	103.5	LPF ADMIN NET CONE PK T8		
LPF AN10	4	COMMAND	171.5500	CSQ	164.1500	107.2	LPF ADMIN NET CHEWS RIDGE T10		
LPF AN13	5	COMMAND	171.5500	CSQ	164.1500	141.3	LPF ADMIN NET ANDERSON T13		
LPF AN15	6	COMMAND	171.5500	CSQ	164.1500	162.2	LPF ADMIN NET CALANDRA T15		
NIFC T2	8	TACTICAL	168.2000	CSQ	168.2000	CQS	NIFC T2 - COLEMAN FIRE		
COLE A/G	13	A/G	169.2000	CSQ	169.2000	CQS	AIR TO GROUND COLEMAN FIRE		
FORNET 8	11	FOREST NET 8	170.4625	CSQ	164.9125	103.5	IA ONLY COMMAND		
LP TAC 3	12	LP TACTICAL	168.2625	CSQ	168.2625	CQS	IA ONLY TACTICAL		
CALCORD	15	MEDEVAC A/G	156.0750	156.7	156.0750	156.7	MEDICAL EVAC EMERGENCIES ONLY		
GUARD 18	16	AIRGUARD	168.6250	CSQ	168.6250	110.9	EMERGENCIES ONLY		
9. Prepared by: Name: Glenn Palmgren PSC2 (t) Signature: /s/ Glenn R. Palmgren									
ICS 204		Date/Time: 10/20/2020		2000		Personnel Count:		174	

ASSIGNMENT LIST (ICS 204 WF)

CONTROLLED UNCLASSIFIED INFORMATION/BASIC

1. Incident Name: Dolan and Coleman Fires		2. Operational Period: Date From: 10/21/2020 Date To: 10/21/2020 Time From: 0700 Time To: 1900		3. Branch Division Suppression Repair				
4. Operations Personnel: Field Ops Section Chief: Joe Alyea Branch Director: Division/Group Supervisor: M.Rice, R.Shields(t), P.Johnson(t)				Planning Ops: Keith Murphy Branch Safety: Air Attack:				
Page 1 of 1								
5. Resources Assigned: ***Resources in BOLD are identified as IA resources***								
Resource Identifier	ALS	LWD	Leader	Personnel	Request #	Hours	Report To	Return To
ARROYO GRANDE FL CW IA		10/20	LARSON, SETH	10	A-171	0700-1900	Tusi Helibase	Tusi Helibase
HC2 DESCANSO CREW 5			TINKER, LUKE	21	C C-4	0700-1900	Mission ICP	Mission ICP
ENG3 LPF E18		10/29	LOW, CHRIS	5	E-538	0700-1900	Pacific Valley	Pacific Valley
ENG7 LPF E17		10/29	DELGADO, ELAINE	2	E-542	0700-1900	Pacific Valley	Pacific Valley
DOZ2 ALGERINE WEST		10/29	MONTE, WEST	2	E-569	0700-1900	Mission ICP	Mission ICP
DOZ2 BLACK RANGE		10/29	SHEPPERD, BRANDON	2	E-581	0700-1900	Mission ICP	Mission ICP
DOZ2 HAYDEN		10/25	HAYDEN, CODY	2	E-537	0700-1900	Mission ICP	Mission ICP
EXCA T1 BDRM		10/29	PAINTER, STEVE	1	E-590	0700-1900	Mission ICP	Mission ICP
EXCA T2 YLU0172		10/21	PARKER, KACY	2	E-568	0700-1900	Mission ICP	Mission ICP
EXCA T3 5157		10/28	PARKER, KYLE	2	E-580	0700-1900	Mission ICP	Mission ICP
EXCA T2		10/31	HAYDEN, COLTON	1	E-578	0700-1900	Mission ICP	Mission ICP
EXCA T2		10/30	KRUCKEBERG, JAMES	1	E-579	0700-1900	Mission ICP	Mission ICP
EXCA T2 BLACK RANGE		11/2	PEARSON, TIMOTHY	2	E-548	0700-1900	Mission ICP	Mission ICP
CHIP T3 CAT LAND		10/28	ALDRICH, VANESSA	3	E-575	0700-1900	Mission ICP	Mission ICP
CHIP T3 SUNFIRE		10/28	STARK, LARRY	2	E-574	0700-1900	Mission ICP	Mission ICP
ARCH RAY		10/22	RAY, MOLLY	1	O-1216	0700-1900	Mission ICP	Mission ICP
ARCH KISSINGER		10/27	KISSINFER, KRYSTAL	1	O-1228	0700-1900	Mission ICP	Mission ICP
REAF LEIS		10/22	LEIS, SHERRY	1	O-1192	0700-1900	Mission ICP	Mission ICP
REAF EDDINGS		10/22	EDDINGS, BENJAMIN	1	O-1191	0700-1900	Mission ICP	Mission ICP
REAF DOLAN		10/22	DOLAN, MICHAEL	1	O-1206	0700-1900	Mission ICP	Mission ICP
REAF HEARD		10/25	HEARD, CHARLES	1	O-1214	0700-1900	Mission ICP	Mission ICP
6. Work Assignments: TASK: Restore roads, dozer lines and drainage systems. Reduce visual impacts of the fire lines. Monitor the fires edge. PURPOSE: Minimize potential for erosion and sediment delivery to water courses. END STATE: To restore firelines and transportation routes back to prefire conditions as reasonably possible. RISK ASSESSMENT: Stay alert for drivers in the fire area and in restricted areas. Watch for snags and rollout onto roads and working around heavy equipment.								
7. Special Instructions: -All medical resources MUST check in with Los Padres Dispatch and Division Supervisor once in place, see medical plan for REMS availability. -READs and the BAER Team will check in and out with Division. -Assume all divisions have Sudden Oak Death Pathogen and clean and disinfect everything. No weed wash is available use a commercial wash station where sump collection is done to prevent the further spread. -For Mop up and Patrol – Do not go off the road (UXO). -Utilize Collector to mark all accountable property (pumps, hose, tanks...), attach a picture of the serial number with the LAT and LONG. -Use call outs when traveling on Nacimiento Ferguson Road. -INITIAL ATTACK RESOURCES will maintain a state of readiness for response. All responses will be initiated by operations through the divisions. Once the resource is cancelled/released they will return to the incident and notify comms that they are back in their division.								
8. Communications								
Name	Ch	Function	Rx Freq	Rx Tone	Tx Freq	Tx Tone	Notes	
LPF AN4	1	COMMAND	171.5500	CSQ	164.1500	136.5	LPF ADMIN NET ALDER PK T4	
LPF AN6	2	COMMAND	171.5500	CSQ	164.1500	156.7	LPF ADMIN NET PIEDRAS BLANCAS T6	
LPF AN8	3	COMMAND	171.5500	CSQ	164.1500	103.5	LPF ADMIN NET CONE PK T8	
LPF AN10	4	COMMAND	171.5500	CSQ	164.1500	107.2	LPF ADMIN NET CHEWS RIDGE T10	
LPF AN13	5	COMMAND	171.5500	CSQ	164.1500	141.3	LPF ADMIN NET ANDERSON T13	
LPF AN15	6	COMMAND	171.5500	CSQ	164.1500	162.2	LPF ADMIN NET CALANDRA T15	
LPF T4	7	TACTICAL	163.7125	CSQ	163.7125	CQS	LPF TACTICAL - DOLAN FIRE	
A/G TAC	9	A/G TACTICAL	163.1500	CSQ	163.1500	CQS	A/G TAC DOLAN FIRE	
A/G CMD	10	A/G COMMAND	167.5500	CSQ	167.5500	CQS	A/G CMD DOLAN FIRE	
FORNET 8	11	FOREST NET 8	170.4625	CSQ	164.9125	103.5	IA ONLY COMMAND	
LP TAC 3	12	LP TACTICAL	168.2625	CSQ	168.2625	CQS	IA ONLY TACTICAL	
CALCORD	15	MEDEVAC A/G	156.0750	156.7	156.0750	156.7	MEDICAL EVAC EMERGENCIES ONLY	
GUARD 18	16	AIRGUARD	168.6250	CSQ	168.6250	110.9	EMERGENCIES ONLY	
9. Prepared by: Name: Glenn Palmgren PSC2 (t) Signature: /s/ Glenn R. Palmgren								
ICS 204	Date/Time: 10/20/2020			2000	Personnel Count: 64			

AIR OPERATIONS SUMMARY (ICS 220)

1. Incident Name: Coleman		2. Operational Period: Date From: 10/21/20 Time From: 0700		3. Sunrise: 07:19		Sunset: 18:22	
4. Remarks (safety notes, hazards, air operations special equipment, etc.): Add one minute each day for updated sunrise Subtract one minute each day for updated sunset Hoist A/C: CHP H70 Paso Robles SBC H308 Santa Ynez NVG/ALS H406 BEU Bear Valley Day Hoist/BLS *****Utilize CALCORD Freq. for hoist ops*****		5. Ready Alert Aircraft: Medivac: Mercy Air 20 FHL New Incident: H527		6. Temporary Flight Restriction Number: Altitude: 7000 feet MSL Center Point: 36°06'28"N 121°21'01"W		9. Fixed-Wing (category/kind/type, make/model, N#, base): Air Tactical Group Supervisor Aircraft:	
		8. Frequencies: Air/Air Fixed-Wing		AM		FM	
7. Personnel:		Name:		Phone Number:		NONE	
Air Operations Branch Director						**Medevac A/G** CALCORD Rx 156.0750 tn 156.7 / Tx 156.0750 tn 156.7	
Air Support Group Supervisor		Command		RX 171.5500		Other Fixed-Wing Aircraft:	
Air Tactical Group Supervisor		Deck Coordinator		168.3500		NONE	
Helicopter Coordinator		Take-Off & Landing Coordinator					
Helibase Manager		Jeremy Blake 10/20 Eric Verdries 10/21		(805)980-5132 (805)455-5569		168.625 T1 110.9	
10. Helicopters (use additional sheets as necessary):							
FAA N#	Category/Kind/Type	Make/Model	Base	Available	Start	Remarks	
H527 / N534HQ	Type 2	Bell 205 A1 ++	Tusi	0830	0800	Tanked	
N48CC	Type 2 Restricted	Bell UH1H 703	Tusi	0830	0800	Tanked	
HT-1043T	Type 1	Sikorsky S61A	Tusi	0830	0800	Bucket	
HT-91158	Type 1	Sikorsky S-61	Tusi	0830	0800	Tanked	
HT-716HT	Type 1	Sikorsky CH-54B	Tusi	0830	0800	Tanked	
11. Prepared by: Name: Jeremy Blake		Position/Title: HEBM		Signature: _____			
ICS 220, Page 1		Date/Time: 10/20/20 0800					

AIR OPERATIONS SUMMARY (ICS 220)


1. Incident Name: Coleman	2. Operational Period: Date From: 10/21/20 Time From: 0700	3. Sunrise: 07:19	Sunset: 18:22
12. Task/Mission/Assignment (category/kind/type and function includes: air tactical, reconnaissance, personnel transport, search and rescue, etc.):			
Category/Kind/Type and Function	Name of Personnel or Cargo (if applicable) or Instructions for Tactical Aircraft	Mission Start	Fly From
AA			Fly To
B 71			
T137			
T160			

11. Prepared by: Name: _____ Position/Title: _____ Signature: _____

Date/Time: _____

AIR OPERATIONS SUMMARY (ICS 220)

1. Incident Name: Dolan		2. Operational Period: Date From: 10/21/20 Date To: 10/22/20 Time From: 0700 Time To: 0700		3. Sunrise: 07:19		Sunset: 18:22	
4. Remarks (safety notes, hazards, air operations special equipment, etc.): Add one minute each day for updated sunrise Subtract one minute each day for updated sunset Hoist A/C: CHP H70 Paso Robles SBC H308 Santa Ynez NVG/ALS H406 BEU Bear Valley Day Hoist/BLS *****Utilize CALCORD Freq. for hoist ops*****		5. Ready Alert Aircraft: Medivac: Mercy Air 20 FHL New Incident: H527		6. Temporary Flight Restriction Number: Altitude: Center Point: (NO TFR)			
		8. Frequencies: Air/Air Fixed-Wing		AM FM		9. Fixed-Wing (category/kind/type, make/model, N#, base): Air Tactical Group Supervisor Aircraft:	
7. Personnel:		Phone Number:		NONE			
Air Operations Branch Director		Air/Ground		Tactical 163.1500		**Medevac A/G** CALCORD Rx 156.0750 tn 156.7 / Tx 156.0750 tn 156.7	
Air Support Group Supervisor		Command		Rx 171.5500		Other Fixed-Wing Aircraft:	
Air Tactical Group Supervisor		Deck Coordinator				NONE	
Helicopter Coordinator		Take-Off & Landing Coordinator					
Helibase Manager		Air Guard		168.625 T1 110.9			
10. Helicopters (use additional sheets as necessary):							
FAA N#	Category/Kind/Type	Make/Model	Base	Available	Start	Remarks	
11. Prepared by: Name: Jeremy Blake		Position/Title: HEBM		Signature: _____			
ICS 220, Page 1				Date/Time: 10/20/20 1330			

INCIDENT RADIO COMMUNICATIONS PLAN I-205				1. INCIDENT NAME		2. DATE/TIME PREPARED		3. OPERATIONAL PERIOD DATE/TIME			
				Dolan Fire		10/20/2020 18:20 AM		10/21/2020 Day Shift			
4. BASIC RADIO CHANNEL UTILIZATION											
Ch #	Function	Channel Name	Assignment	RX Freq	NW	RX Tone/NAC	TX Freq	N/W	TX Tone/NAC	Mode Analog (A) Digital (D) Mixed (M)	Remarks
1	COMMAND	LPF AN4	ALL DIVISIONS	171.5500	N	CSQ	164.1500	N	136.5	A	LPF ADMIN NET ALDER PK T4 CONTACT FOREST DISP NW OF FIRE
2	COMMAND	LPF AN6	ALL DIVISIONS	171.5500	N	CSQ	164.1500	N	156.7	A	LPF ADMIN NET PIEDRAS BLANCAS T6 FOREST DISPATCH SOUTH OF FIRE
3	COMMAND	LPF AN8	ALL DIVISIONS	171.5500	N	CSQ	164.1500	N	103.5	A	LPF ADMIN NET CONE PK T8 ALL DIVISIONS CONTACT FOREST DISP
4	COMMAND	LPF AN10	ALL DIVISIONS	171.5500	N	CSQ	164.1500	N	107.2	A	LPF ADMIN NET CHEWS RIDGE T10 DIVISION AF/K CONTACT FOREST DISP
5	COMMAND	LPF AN13	ALL DIVISIONS	171.5500	N	CSQ	164.1500	N	141.3	A	LPF ADMIN NET ANDERSON T13 DIVISION AF/K CONTACT FOREST DISP
6	COMMAND	LPF AN15	ALL DIVISIONS	171.5500	N	CSQ	164.1500	N	162.2	A	LPF ADMIN NET CALANDRA T15 FOREST DISPATCH EAST OF FIRE
7	TACTICAL	LPF T4	DOLAN FIRE	163.7125	N	CSQ	163.7125	N	CQS	A	LPF TACTICAL - DOLAN FIRE
8	TACTICAL	NIFC T2	COLEMAN FIRE	168.2000	N	CSQ	168.2000	N	CQS	A	NIFC T2- COLEMAN FIRE
9	A/G TACTICAL	A/G TAC	DOLAN FIRE A/G	163.1500	N	CSQ	163.1500	N	CQS	A	A/G TAC DOLAN FIRE
10	A/G COMMAND	A/G CMD	DOLAN FIRE	167.5500	N	CSQ	167.5500	N	CQS	A	A/G CMD DOLAN FIRE
11	FOREST NET 8	FORNET 8	IA WITH FOREST	170.4625	N	CSQ	164.9125	N	103.5	A	IA ONLY COMMAND
12	LP TACTICAL	LP TAC 3	IA WITH FOREST	168.2625	N	CSQ	168.2625	N	CQS	A	IA ONLY TACTICAL
13	A/G	COLE A/G	COLEMAN A/G	169.2000	N	CSQ	169.2000	N	CQS	A	AIR TO GROUND COLEMAN FIRE
14											
15	MEDEVAC A/G	CALCORD	ALL DIVISIONS	156.0750	N	156.7	156.0750	N	156.7	A	MEDICAL EVAC EMERGENCIES ONLY
16	AIRGUARD	GUARD 18	ALL DIVISIONS	168.6250	N	CSQ	168.6250	N	110.9	A	EMERGENCIES ONLY
5. Special Instructions:											
6. I-205 Prepared By: Communications Unit Leader				Name: Peter Willis COML				Signature: 			

EA IMT - Silver Contact List

POSITION	NAME	Contact Number	
Incident Command			
ICT2	Steve Goldman	414-308-7775	
ICT2(t)	Lucas Minton	928-707-1940	
Safety			
SOF2	Chris Woods	573-315-8394	
MEDL	Mike Passarelli	330-352-7534	
Public Information			
PIO2	Micah Bell	219-405-0125	
Liason			
LOFR	Roger Goldman	812-340-4266	
Operations			
OSC2	Keith Murphy	906-250-1382	
OSC2	Joe Alyea	989-305-1227	
DIVS	Mark Brown	207-233-9348	
DIVS	Mike Rice	218-368-2087	
DIVS(t)	Rob Shields	906-630-5092	
DIVS(t)	Patrick Johnson	218-370-0321	
Aviation			
Planning			
PSC2(t)	Glenn Palmgren	517-243-3487	
SITL(t)	Ben Garrett	715-579-3056	
GISS	Matt Judd	651-587-1351	
ITSS	Bill Whitacre	573-578-1889	
Logistics			
LSC2(t)	Tim Oland	608-799-1805	
FACL	Dave Avery	218-370-9805	
BCMG	Mike Johnson	218-235-9063	
ORDM	Chris Adamcik	936-238-8819	
	Orders: cell: 936-238-8819	desk: 936-875-4803	
COML	Peter Willis	320-630-3193	
EQPM	Mike Trierweiler	218-343-9371	
Finance			
FSC2	Peter Beringer	603-970-1338	
FSC2(t)	Deb Niles	989-745-2394	
TIME	Mary Coleman	573-210-7073	
TIME(t)	Valarie Sanchez	505-269-7808	
PTRC	Rosemary Johnson	218-252-2363	
Important Emails			
Ordering	fire.ordering@gmail.com	cell: 936-238-8819	desk: 936-875-4803
Finance Unit	2020.dolan.finance@firenet.gov		
Demob Unit	2020.dolan.dmob@firenet.gov		
Resource Unit	2020.dolan.resources@firenet.gov		
Situation Unit	2020.dolan.situation@firenet.gov		

MEDICAL PLAN ICS 206	1. INCIDENT NAME	2. DATE PREPARED	3. TIME PREPARED	4. OPERATIONAL PERIOD				
	Dolan Fire	10/20/2020	1800	10/21/2020, 0600-2200				
5. INCIDENT MEDICAL AID STATIONS								
MEDICAL AID STATIONS	LOCATION					PARAMEDICS		
						YES	NO	
Medical Unit	ICP						X	
6. TRANSPORTATION								
A. AIR AMBULANCES								
NAME	LOCATION	PHONE	PARAMEDICS					
			YES	NO				
911 Provider Day-Night Mission	Variable - (40 min ETA)	Los Padres ECC 805-961-5727	X					
CHP H70 Hoist Day / Variable Night	Paso Robles, CA - (20 min ETA)	Paso Robles ECC 805-239-3553	X					
Mercy Air Night	FHL, CA - (10 min ETA)	FHL ECC 831-386-2526	X					
B. GROUND AMBULANCES & REM TEAMS								
NAME	Last Day	LOCATION				PARAMEDICS		
						YES	NO	
AMR 2		DP 72				X		
REMS 1 ALS	10/23	Coleman Fire				X		
Roger Colombo EMP-F	11/4	Coleman Fire				X		
Melanie Miller EMT-P	10/31	Tusi Helibase				X		
John Seymer EMT-A	10/31	ICP					X	
7. HOSPITALS								
NAME	ADDRESS	TRAVEL TIME		PHONE	HELIPAD		BURN CTR	
		AIR	GRND		YES	NO	YES	NO
CHOMP LVL 3	23625 Holman Hwy Monterey, CA	N/A	1hr 20mi	831-624-5311		X		X
Mee Memorial LVL 3	300 Canal St King City, CA	15 Min	20min	831-385-6000	X			X
Santa Clara Valley Med Ctr LVL 1	751 S. Bascom Ave. San Jose, CA NN37 18.7713 X 121 55.9960	60 Min	2hrs	408-885-5000	X		X	
Natividad Medical Center LVL 2	1441 Constitution Blvd. Salinas Ca N36 41.8002 X W121 37.9853	25 Min	60 Min	831-755-6268	X			
Community Regional Med Ctr LVL 1	2823 Fresno St. Fresno, Ca N36 44.5702 X W119 47.0913	90 Min	180 Min	559-459-7401	X		X	
Big Sur Health Center Medical Clinic	46968 CA-1 Big Sur, CA 93920	N/A	2hrs	831-667-2580		X		X
8. MEDICAL EMERGENCY PROCEDURES								
<u>LINE-EMERGENCY MEDICAL DAY PLAN 0700 - 1930:</u>					<u>LINE "NON-EMERGENCY INCIDENT" DAY PLAN:</u>			
- Crew Supervisor to contact Division Supervisor/Operations with:					- Crew Supervisor to contact Division Supervisor with:			
<ul style="list-style-type: none"> Patient Complaint, Condition and Location via Tactical or Command frequency. Priority 1/Red & 2/Yellow Patients trigger Incident within Incident (IWI). 					<ul style="list-style-type: none"> Patient Complaint, Condition and Location via Tactical or Los Padres frequency. Priority 3/Green Patients do not trigger Incident within Incident (IWI). 			
- Division Supervisor/Operation contacts Los Padres Communications:					- Division Supervisor contacts Los Padres Communications:			
<ul style="list-style-type: none"> Division Supervisor or POC* will run "Medical –Emergency" on the Los Padres frequency. Division Supervisor or POC* to use "Medical Incident Report" worksheet on back of this page or back of IRPG. Los Padres Communication contacts Medical Unit Leader on the Command frequency or camp frequency. 					<ul style="list-style-type: none"> Division Supervisor or POC* will run "Non-Emergency Incident" on the Los Padres frequency. Division Supervisor or POC* will use "Medical Incident Report" worksheet on the back of this page or back of IRPG. Los Padres Communications contacts Medical Unit Leader on the Command frequency or camp frequency. 			
POC* (Point of Contact) and/or Operations					<u>AFTER HOUR MEDICAL PLAN 1930 - 0700:</u>			
					- Contact AMR Dispatch at 911 or 831-796-6444 , then contact MEDL who will be located in the medical tent during the night.			
ICS 206	9. PREPARED BY: (Medical Unit Leader) Mike Passarelli MEDL			10. REVIEWED BY: (Safety Officer) Chris Woods SOF2(t)				

COVID-19 Best Practices / Mitigation

Minimize risk and limit exposure to COVID-19 by daily screening, minimizing large group settings, social distancing, wearing face coverings, hand washing, and practicing module of one concept.

At the beginning of the shift, supervisors should remind their personnel to self-screen for symptoms.

This document to be placed in the daily IAP

WILDLAND FIRE COVID-19 SCREENING TOOL

Today or in the past 24 hours, have you had any of the following symptoms¹?

Symptom
Cough more than expected?
Shortness of breath or difficulty breathing?
Fever? Chills?
Muscle pain, outside your normal for firefighting?
Sore throat?
New loss of taste or smell?
Fatigue, outside your normal for firefighting?
Headache, outside your normal for firefighting?
Congestion or runny nose, outside your normal for firefighting?
Nausea or vomiting
Diarrhea
<i>* Take temperature with no-touch thermometer, if available *</i>

¹Symptoms of Coronavirus

<https://www.cdc.gov/coronavirus/2019-ncov/symptoms-testing/symptoms.html>

Do your part to minimize your risk of exposure and limit the spread COVID-19.

Public Considerations

- ⇒ Wear a face covering when in public.
- ⇒ Wash your hands often.
- ⇒ Use hand sanitizer after pumping gas.
- ⇒ Use hand sanitizer prior to getting into your vehicle after visiting the grocery store or a restaurant.
- ⇒ Set the example while in the public eye.

*Keep in mind that fire camp is in a city with a populous and the potential for the COVID virus to be present is greater.

If you answered Yes to these symptoms, report it to your supervisor immediately, self-isolate away from other people until given direction and call **MEDICAL**.



COVID-19 OPERATIONAL FLOWCHART

PERSONNEL SHALL BE SCREENED FOR S&S OF COVID-19 AT CHECK-IN ← *ALL SUPERVISORS SHALL MONITOR THEIR PERSONNEL*

- ALL PERSONNEL SHALL:**
- PRACTICE PHYSICAL DISTANCING
 - WEAR A MASK WHEN LESS THAN 6' FROM OTHERS
 - SHALL SELF-MONITOR FOR S&S
 - WASH HANDS OFTEN / USE HAND SANITIZER
 - AVOID FACIAL CONTACT WITH YOUR HANDS
 - NOTIFY THE MEDICAL UNIT OF ANY FLU-LIKE S&S
 - DO NOT SHARE TOOLS / EQUIPMENT

- SIGNS & SYMPTOMS INCLUDE:**
- CHILLS OR FEVER > 100.4°
 - COUGH, AND/OR SHORT OF BREATH
 - LOSS OF TASTE OR SMELL, SORE THROAT
 - CONGESTION, RUNNY NOSE
 - FATIGUE, HEADACHE, BODY ACHES
 - NAUSEA OR VOMITING
- (Do not report to your assignment if you are sick)*

- PERSONNEL WHO DEVELOP FLU-LIKE SYMPTOMS SHALL:**
- NOTIFY THEIR IMMEDIATE SUPERVISOR
 - REPORT TO THE MEDICAL UNIT FOR EVALUATION

- MEDICAL UNIT WILL:**
- EVALUATE PERSONNEL / MAKE RECOMMENDATIONS
 - TRACK PERSONNEL FOR THE INCIDENT
- CONTACT-TRACING
 - MAKE NECESSARY *TEAM & FOREST* NOTIFICATIONS

- PERSONNEL EXPERIENCING FLU-LIKE SYMPTOMS SHALL BE TESTED:**
- SEEK MEDICAL CARE FOR FURTHER TESTING (TESTING SITES PROVIDED BY THE MEDL)
 - AFTER TESTING IS COMPLETE, PERSONNEL MAY HAVE TO QUARANTINE WHILE AWAITING RESULTS

- IF COVID-POSITIVE:**
- PERSONNEL SHALL ISOLATE AT APPROVED LOCATION UNTIL DEMOB'D (LOCATION PROVIDED BY THE MEDL)

- IF NEGATIVE:**
- FOLLOW AGENCY SPECIFIC GUIDELINES
 - OR, PER CDC, NO FURTHER ACTION REQUIRED

- SUPERVISOR SHOULD:**
- MAKE NOTIFICATIONS TO HOME UNIT
 - BEGIN AGENCY WORK-COMP PROCESS
 - COMPLETE DEMOB PROCESS

- PERSONNEL: CONTINUE TO SELF-MONITOR**
(Do not report to your assignment if you are sick)
IF PERSONNEL IS TOO SICK, NOTIFY SUPERVISOR

IMT WILL PROVIDE DIRECTION AND SUPPORT UNTIL RECEIVED BY THE HOME UNIT

FDNY IMT - MEDICAL UNIT WILL TRACK AND MONITOR ALL COVID RELATED EXPOSURES

IN-CAMP ISOLATION FLOWCHART:

- IN-CAMP GUIDELINES AS FOLLOWS:**
- PERSONNEL SHALL ISOLATE AT APPROVED LOCATION ONCE EVALUATED BY MEDICAL STAFF
 - MEDICAL UNIT WILL MONITOR PERSONNEL UNTIL DEMOBILIZED FROM THE INCIDENT

SHOULD PERSONNEL'S HEALTH STATUS DETERIORATE, CONTACT THE MEDICAL UNIT ASAP

- MEDICAL UNIT SHALL:**
- CONTACT COMMUNICATIONS - ARRANGE FOR TRANSPORTATION TO HOSPITAL IF NEEDED
 - CALL THE IMMEDIATE SUPERVISOR
 - MAKE NECESSARY TEAM & FOREST NOTIFICATIONS

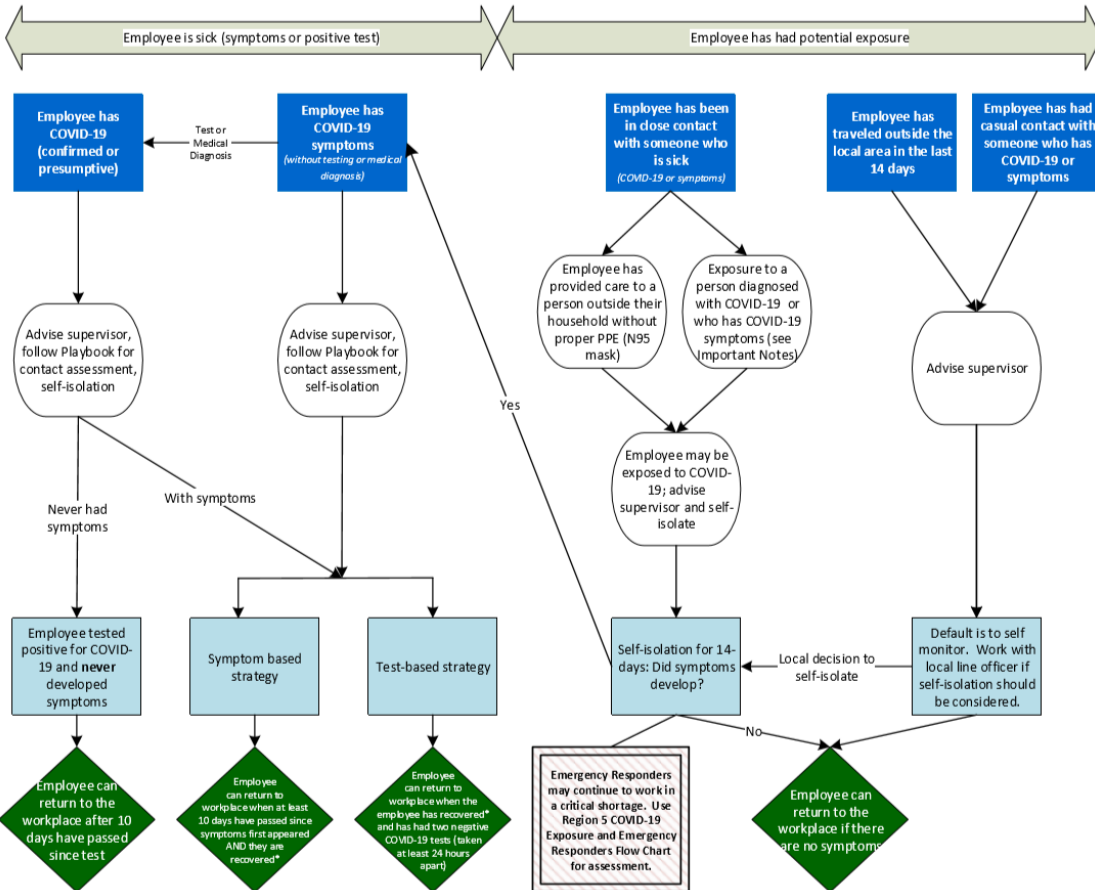
FEDERAL EMPLOYEES SHALL REFER TO REGION 5 — COVID-19 ACTION PROCESS FOR AGENCY SPECIFIC GUIDANCE



Region 5 Pacific Southwest Region COVID-19 Response Action Process

August 20, 2020

COVID-19 Response and Employee Notification



Important Notes:

- * Recovered is defined as 10 days since symptoms first appeared AND 24 hours with no fever without the use of fever-reducing medicines AND other symptoms of COVID-19 are improving.
- Symptoms of COVID-19 include cough, shortness of breath, trouble breathing, fever, chills, repeated shaking with chills, muscle or body aches, headache, sore throat, new loss of taste or smell, congestion or runny nose, nausea or vomiting, or diarrhea.
- Contact Assessment should be conducted to help determine potential exposure of additional employees; conduct assessment for the 2-day period before illness onset or test date of sick employees, whichever came first.
- Close contact is defined as less than 6 feet, for at least 15 minutes with or without face coverings/masks. Casual contact is defined as less than 6 feet for less than 15 minutes or more than 6 feet for more than 15 minutes.
- Any employee in "close contact with someone who is sick" may return to the workplace if the sick person is tested for COVID-19 and the test is negative.
- Contact with exposed individuals is classified as secondary contact and does not typically require self-isolation unless the exposed individual tests positive.
- You do not need to self-isolate unless you meet one of the criteria identified.
- Always follow the advice of a medical provider, if given, including any need for isolation or clearance for return-to-duty.

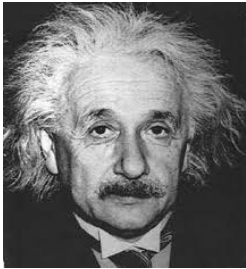
This document is subject to change based on CDC guidance.

Dolan Fire & Coleman Fire Safety Message

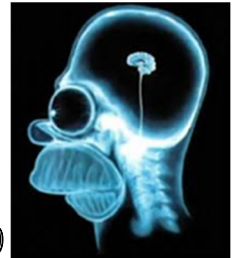
October 21, 2020

Normalization of Deviance

- When we take short cuts or do not follow known processes but **NOTHING BAD HAPPENS!** This will create an automatic response or loop in your brain to repeat the decision until there is a negative reaction (Lesson Learned).
- Naturally occurs because firefighters rely on Recognition Primed Decision-Making Process that is based on previous experience. (Gary Klein, *Sources of Power*)
- The Brains desire to work efficiently and quickly. We will likely take shortcuts.
- Time pressure only increases the risk to take short cuts.



THE BRAIN IS BRILLIANTLY STUPID



Examples of simple actions we often get away with:

1. Driving too fast
2. Wearing seat belts
3. Time to scout the fire, escape routes, safety zones, weather
4. Disconnecting or putting tape over the “door open” warning light.
5. Conducting a safety check before a flight, shift or mission
6. Not reviewing the medical plan, Medical Incident Report in case there is an incident within an incident.

Ways to combat the brains natural desire to normalize deviant behaviors:

1. Plan the work, work the plan
2. Follow LCES, standing fire orders, watch out situations, policies and procedures. These are written in blood!
3. Learn from close calls and near misses
4. Be mindful of your work
5. Slow is fast and fast is slow

Prepared by: Chris Woods, SOF2(t)

October 20, 2020

DIRECTIONS FOR FILLING OUT A CTR/SHIFT TICKET AND SUBMITTING THEM ELECTRONICALLY

Financial Information:

Fire Name: Dolan

Fire Number: CA-LPF-002428 / P5NF6M21 (0507)

Financial Information:

Coleman

CA-LPF-003161 / P5NPD921 (0507)

Fire Office Responsible for Fire: Los Padres Nation Forest

Remarks Section of CTR or Shift Ticket: Your phone #, email and Fire Name

Finance Email: 2020.dolan.finance@firenet.gov (We will use this email for both fires)

Finance Documents Needed (If Not Already Submitted):

Overhead: <ul style="list-style-type: none">• Resource Order• AD Hire Form (If an AD)• CTR's	Cooperator: <ul style="list-style-type: none">• Cooperative Agreement• Resource Order• Shift Ticket
---	--

Please send in your CTR or Shift Ticket daily. You can:

1. Send a hard copy of CTR or Shift Ticket
2. Take a picture of signed CTR or Shift ticket and email in
(Please place your O# or E# in the subject line of your email)
3. Use QR code to download a fillable CTR or Shift Ticket and email signed copy in

For Finance assistance please contact:

Mary Coleman at (573) 210-7073

Or (916) 798-3083

QR Codes for:

Finance Email



Finance Check-in



Fillable CTR & Shift Ticket



Eastern Area Silver IMT
Public Information Message

Think Before You Post

Posting work-related content on your personal social media reflects on the professionalism of your crew, your agency, and the wildland firefighting community.

 If you share work-related content, make sure it's already available to the public.

Check those photos.
Unsafe, unprofessional, or embarrassing content reflects poorly on all of us.



 **Always maintain situational awareness on the fireline.**
Firefighters looking at a camera are not looking up, down, and all around - take photos when it's safe.

No compensation for content posted that relates to your job. 

Uphold our reputation.
 Always do what's right on the fireline and online.

Remember, everything posted online is PERMANENT.



If you have questions, ask your supervisor or contact public affairs.

Media Inquiries:

Incident Personnel Approached by the media should refer them to the Public Information Officer at: (831) 272-0221

Social Media Policy

Incident personnel are prohibited from posting photographs and videos during operations and from posting information on social media during the incident.

Please be mindful that posting work related information or activities on personal social media accounts or websites reflects on the professionalism of the fire community, sponsoring agencies and those we serve.

It is **encouraged** that incident personnel share incident photos and videos with the **Public Information** shop for use in official incident communications. Be sure to provide your name, home unit and location on the fire when providing photos. The EA IMT wants to be sure individuals receive photo credits when their images or videos are used.

Photos and videos may be mailed to
2020.dolan@firenet.gov

10/21/2020

TENTATIVE RELEASE

DOLAN US-CA-LPF-002428

OVERHEAD

O-705 0700 (RES) REMS 2 AFV

10/22/2020

TENTATIVE RELEASE

DOLAN US-CA-LPF-002428

EQUIPMENT

E-568 0830 (EXCA) MISC - EXCAVATOR, T2 -

OVERHEAD

O-1192 1900 (REAF) LEIS, SHERRY

10/23/2020

TENTATIVE RELEASE

DOLAN US-CA-LPF-002428

CREWS

C-122 1100 (CC) SAN DIEGO 22

EQUIPMENT

E-143 1230 (ENG3) INDIANA DUNES E-5673

OVERHEAD

O-1206 0800 (REAF) DOLAN, MICHAEL P
O-1191 0830 (REAF) EDDINGS, BENJAMIN
O-1200 0900 (GSUL) KIRKHAM, WILLIAM JOSEPH

MEDICAL PLAN (ICS 206 WF)

Controlled Unclassified Information//Basic

Medical Incident Report

FOR A NON-EMERGENCY INCIDENT, WORK THROUGH CHAIN OF COMMAND TO REPORT AND TRANSPORT INJURED PERSONNEL AS NECESSARY.

FOR A MEDICAL EMERGENCY: IDENTIFY ON SCENE INCIDENT COMMANDER BY NAME AND POSITION AND ANNOUNCE "MEDICAL EMERGENCY" TO INITIATE RESPONSE FROM IMT COMMUNICATIONS/DISPATCH.

Use the following items to communicate situation to communications/dispatch.

1. CONTACT COMMUNICATIONS / DISPATCH (**Verify correct frequency prior to starting report**)

Ex: "Communications, Div. Alpha. Stand-by for Emergency Traffic."

2. INCIDENT STATUS: *Provide incident summary (including number of patients) and command structure.*

Ex: "Communications, I have a Red priority patient, unconscious, struck by a falling tree. Requesting air ambulance to Forest Road 1 at (Lat./Long.) This will be the Trout Meadow Medical, IC is TFLD Jones. EMT Smith is providing medical care."

Severity of Emergency / Transport Priority	<input type="checkbox"/> RED / PRIORITY 1 Life or limb threatening injury or illness. Evacuation need is IMMEDIATE <i>Ex: Unconscious, difficulty breathing, bleeding severely, 2° – 3° burns more than 4 palm sizes, heat stroke, disoriented.</i> <input type="checkbox"/> YELLOW / PRIORITY 2 Serious Injury or illness. Evacuation may be DELAYED if necessary. <i>Ex: Significant trauma, unable to walk, 2° – 3° burns not more than 1-3 palm sizes.</i> <input type="checkbox"/> GREEN / PRIORITY 3 Minor Injury or illness. Non-Emergency transport <i>Ex: Sprains, strains, minor heat-related illness.</i>	
Nature of Injury or Illness & Mechanism of Injury		<i>Brief Summary of Injury or Illness (Ex: Unconscious, Struck by Falling Tree)</i>
Transport Request		<i>Air Ambulance / Short Haul/Hoist Ground Ambulance / Other</i>
Patient Location		<i>Descriptive Location & Lat. / Long. (WGS84)</i>
Incident Name		<i>Geographic Name + "Medical" (Ex: Trout Meadow Medical)</i>
On-Scene Incident Commander		<i>Name of on-scene IC of Incident within an Incident (Ex: TFLD Jones)</i>
Patient Care		<i>Name of Care Provider (Ex: EMT Smith)</i>

3. INITIAL PATIENT ASSESSMENT: *Complete this section for each patient as applicable (start with the most severe patient)*

Patient Assessment: See IRPG page 106

Treatment:

4. TRANSPORT PLAN:

Evacuation Location (if different): *(Descriptive Location (drop point, intersection, etc.) or Lat. / Long.)* Patient's ETA to Evacuation Location:

Helispot / Extraction Site Size and Hazards:

5. ADDITIONAL RESOURCES / EQUIPMENT NEEDS:

Example: Paramedic/EMT, Crews, Immobilization Devices, AED, Oxygen, Trauma Bag, IV/Fluid(s), Splints, Rope rescue, Wheeled litter, HAZMAT, Extrication

6. COMMUNICATIONS: Identify State Air/Ground EMS Frequencies and Hospital Contacts as applicable

Function	Channel Name/Number	Receive (RX)	Tone/NAC *	Transmit (TX)	Tone/NAC *
COMMAND					
AIR-TO-GRND					
TACTICAL					

7. CONTINGENCY: **Considerations:** *If primary options fail, what actions can be implemented in conjunction with primary evacuation method? Be thinking ahead.*

8. ADDITIONAL INFORMATION: *Updates/Changes, etc.*

REMEMBER: Confirm ETA's of resources ordered. Act according to your level of training. Be Alert. Keep Calm. Think Clearly. Act Decisively.