

INCIDENT ACTION PLAN

DOLAN AND COLEMAN FIRES

CA-LPF-002428 and CA-LPF-003161



Incident Information
2020.dolan@firenet.gov
831-244-3762

PHONE BRIEFING FOR SPIKED AND REMOTE RESOURCES
CALL 888-844-9904 - ENTER PASSCODE 4808672#



Coleman IAP & Maps

Sunday
10/25/2020
0700 - 1900



Dolan IAP & Maps

WiFi Hotspot available near briefing area: Verizon-MiFi8800L-96B8 Password: 7e9c12b6

INCIDENT OBJECTIVES (ICS 202)

1. Incident Name: Dolan and Coleman Fires	2. Operational Period:	Date From: 10/25/2020 Time From: 0700	Date To: 10/25/2020 Time To: 1900
---	-------------------------------	--	--------------------------------------

3. Objective(s):

LEADERS INTENT

Continue a full suppression strategy on the Dolan and Coleman Fires. Values at risk include human safety, private property, National Scenic Byway (Highway 1), Fort Hunter Liggett improvements, and wilderness values. Apply tactics that offer the highest probability of success. Identify, develop and prepare contingency measures in a proactive fashion. Develop and maintain an accurate and timely information sharing process for high values at risk.

MANAGEMENT OBJECTIVES

Provide for firefighter and public safety through hazard recognition and risk management.

Minimize risk and limit exposure by following COVID-19 best management practices.

Minimize or avoid impacts to wilderness values by applying minimum impact suppression tactics (MIST).

Utilize incident resource advisors to minimize impacts on natural and cultural resources.

Distribute accurate and timely fire information to cooperators, the public, and stakeholders.

Manage resources to meet protection objectives while maintaining fiscal accountability.

CONTROL OBJECTIVES

Minimize risk to private property, surrounding communities, and resource values by:

Maintaining the Dolan Fire within existing perimeter.

Provide for suppression repair where most advantageous with existing resources.


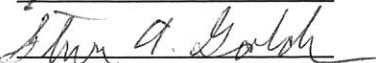
Utilize technology to manage risks to infrastructure, values at risk to guide aggressive mop up, control and suppression repair tactics.

Conduct direct attack on the Coleman Fire when possible focusing on the north, south, and east flanks to protect values at risk. Construct indirect fireline if direct attack is not feasible.

5. Site Safety Plan Required? Yes No

Approved Site Safety Plan(s) Located at:

- 6. Incident Action Plan**
- | | | |
|-----------|-------------------|-----------------|
| √ ICS 203 | √ ICS 206 | √ DEMOB Message |
| √ WX | √ COVID-19 | √ ICS 214 |
| √ ICS 204 | √ ICS 208 | √ MIR 8 LINE |
| √ ICS 220 | √ Finance Message | |
| √ ICS 205 | √ PIO Message | |


7. Prepared By: Glenn Palmgren	Position/Title: PSC2 (t)	Signature: 
8. Approved by Incident Commander:	Steve Goldman	Signature: 

Fire Weather Forecast

FORECAST NO: 59
PREDICTION FOR: DAYSHIFT

NAME OF FIRE: Dolan/Coleman CA-LPF-2428/3161
UNIT: Los Padres National Forest

SHIFT DATE: 25 Oct 2020
TIME AND DATE
FORECAST ISSUED: 1900 / 24 October

SIGNED: 
Incident Meteorologist

WEATHER DISCUSSION: This will be the last day of fog and low cloudiness due to a very dry cold front that will move from north to south over the area during the overnight hours tonight. Humidity will continue to lower overnight, especially after 0200. Wind will continue offshore and expect warming and drying to continue through.

WEATHER FORECAST:

...Extremely Low Humidity Returns Late Tonight...

WEATHER: At the coast, cloudy, decreasing by 1800 to partly cloudy. Inland cloudy, by 1800 becoming mostly sunny.

TEMPERATURE: Coast high 54 to 60. Inland high 56 to 64.

HUMIDITY: Coast minimum more than 80 percent. Inland minimum 64 to 70 percent.

20 FT WIND:

COAST – Southwest to west 1 to 4 mph, by 1100 shifting to northwest to north 2 to 6 mph gusts to 10 mph.

INLAND – Southwest to southeast 1 to 4 mph, by 1100 shifting to north to northeast 2 to 8 mph gusts to 14 mph.

HAINES INDEX: 4 Low.

LIGHTNING ACTIVITY LEVEL: 1.

STABILITY/INVERSION: Marine layer top around 4100ft elevation, mixing height staying at 4100ft elevation throughout the day.

OUTLOOK FOR TONIGHT: At the coast, partly cloudy, by 0300 becoming clear. Inland, Mostly clear, by 0200 becoming clear. Low temperature: Coast 43 to 51. Inland 36 to 44. Humidity: Below inversion continuing to lower, by 0500 ranging from 22 to 30 percent. Above inversion lowering overnight to 31 to 39 percent. Coast wind north to northeast 3 to 8 mph gusts to 12 mph. Inland wind north 4 to 10 mph gusts to 16 mph, by 2300 becoming north to northeast 3 to 9 mph gusts to 14 mph. Inversion top developing around 3400ft elevation.

OUTLOOK FOR MONDAY: Sunny. High temperature: Coast 58 to 66. Inland 64 to 71. Humidity: Coast rising back to 45 to 51 percent. Inland 19 to 25 percent. Coast wind northeast 2 to 8 mph gusts to 12 mph, by 1400 becoming northwest 2 to 6 mph gusts to 10 mph. Inland wind northeast 4 to 10 mph gusts to 18 mph.

EXTENDED FORECAST: **Mon night/Tue:** Mostly clear/mostly sunny. Low 34 to 44. High 65 to 75. Humidity down slightly. Afternoon wind north northwest 4 to 10 mph gusts to 18 mph. **Tue night/Wed:** Clear/Sunny. Low 34 to 44. High 67 to 77. Little change to humidity. Afternoon wind northwest 2 to 7 mph gusts to 12 mph. **Wed night/Thu:** Clear/Sunny. Low 35 to 45. High 69 to 79. Humidity slightly lower. Afternoon wind northwest 2 to 8 mph gusts to 14 mph.

OBSERVATIONS:

Location/Elevation:	Low Temp:	High Temp:	Max. RH	Min. RH	Rainfall
South Coast Ridge IRAWs/3250ft	49	64	100%	65%	0.00
Fort H-L RAWs/1116ft	47	74	93%	42%	0.00
Los Padres PRAWs/997ft	45	77	92%	38%	0.00
Arroyo Seco RAWs/879ft	46	74	95%	45%	0.00

ORGANIZATION ASSIGNMENT LIST (ICS 203)

1. Incident Name: Dolan and Coleman Fires		2. Operational Period: Date From: 10/25/2020 Time From: 0700		Date To: 10/25/2020 Time To: 1900	
3. Incident Commander(s) and Command Staff:			7. Operation Section:		
IC/UC	Steve Goldman, Lucas Minton (t)	Field Ops	Joe Alyea		
	Larry "Mark" Alvarado (t)	Planning Ops	Keith Murphy		
Safety Officer	Chris Woods, Tom Zuelner				
Information Officer	Micah Bell, Jacob Welsh				
Liaison Officer	Roger Goldman				
4. Agency/Organization Representatives:		Branch			
Agency/Organization	Name	Division/Group	Suppression Repair	M.Rice,D.Fiore,R Shields(t),P Johnson(t)	
Los Padres AREP	Nick Larson	Division/Group	Supp Repair North	S. Cameron	
Los Padres AREP COVID Advisor	Charles "CJ" Woodard	Division/Group	Coleman	M.Brown, T.Gonzalez, B.Richwine(t), G.Laird(t)	
		Division/Group	Staging		
Big Sur Fire Dep.	Matt Harris				
Fort Hunter Liggett	Jeff Manetti				
Monterey Sheriff	Ray Tongol				
CHP	M. Olta, John Yerace				
CA State Parks	Matthew Khalar				
PG&E	Geoff Money				
5. Planning Section:		Branch			
Chief	Glenn Palmgren (t)				
Resource Unit	Dave Lemmien				
Situation Unit	Ben Garrett (t)				
Documentation Unit					
GISS	Matt Judd, Brian Houseman (t)				
FBAN					
IMET	Jack Messick	Air Operations Branch			
Training Specialist		Air Operations Branch Director			
ITSS	Bill Whitacre, Brian Lynch (t)	Air Support Group Supervisor			
Lead READ	Kevin Keeler	Tusi Helibase Manager		John Kaisersatt	
6. Logistics Section		8. Finance/Administration Section:			
Chief	Robert Feldtz, Tim Oland (t)	Chief	Peter Beringer, Deb Niles (t)		
Supply Unit	Michael Beeman	Time Unit	Mary Coleman, Valarie Sanchez (t)		
Ordering Manager	C. Adamcik, P. Dutrey, J. Perez (t)	Comp/Claims Unit			
Receiving/Distribution	Lance Weinbrenner, Patrick Aceves(t)	Cost Unit			
Facilities Unit	Dave Avery, Tim Murdoch	Personnel Time	Rosemary Johnson		
Base Camp Manager	Brian Bellew, Cassie Buckley (t)	Equipment Time	Zach Palmer, Rhenea Ortega (t)		
Ground Support Unit	Joseph Badaracco				
Communications Unit	Peter Willis				
Medical Unit	Mike Passarelli, Jim Emerson				
Food Unit	Mike Johnson (t)				
Prepared By: Name:	Glenn Palmgren	Position/Title:	PSC2 (t)	Signature: /s/ Glenn R. Palmgren	
ICS 203		Date/Time:	10/24/2020 2000	NIMS IAP	

ASSIGNMENT LIST (ICS 204 WF)

CONTROLLED UNCLASSIFIED INFORMATION//BASIC

1. Incident Name: Dolan and Coleman Fires	2. Operational Period: Date From: 10/25/2020 Date To: 10/25/2020 Time From: 0700 Time To: 1900	3. Branch Division <b style="text-align: center;">Suppression Repair
--	---	--

Page 1 of 1

4. Operations Personnel:	
Field Ops Section Chief: Joe Alyea	Planning Ops: Keith Murphy
Branch Director:	Branch Safety:
Division/Group Supervisor: M.Rice,D.Fiore,R Shields(t),P Johnson(t)	Air Attack:

5. Resources Assigned: ***Resources in BOLD are identified as IA resources***

Resource Identifier	ALS	LWD	Leader	Personnel	Request #	Hours	Report To	Return To
HC2 DESCANSO CREW 5		11/2	TINKER, LUKE	21	C C-4	0700-1900	Mission ICP	Mission ICP
FMOD Tree Guys		11/5	PADILLA, JOE	2	C O-54	0700-1900	Mission ICP	Mission ICP
ENG3 LPF E18		10/29	LOW, CHRIS	5	E-538	0700-1900	Pacific Valley	Pacific Valley
ENG7 LPF E17		10/29	DELGADO, ELAINE	2	E-542	0700-1900	Pacific Valley	Pacific Valley
WTS1 DUST BUSTERS		11/5	KENNEDY, DEVON	1	E-615	0700-1900	Mission ICP	Mission ICP
WTS1 TRAHAN ENTERPRISES		11/7	KELSEY, JOHN	2	E-614	0700-1900	Mission ICP	Mission ICP
WTT2 CA-INF		11/6	MACTAGGART, JAMES	2	C E-21	0700-1900	Mission ICP	Mission ICP
WTT2 CA-CNF		11/5	ODORICO, NORMAN	2	C E-22	0700-1900	Mission ICP	Mission ICP
WTS3 KMT		11/6	MERTENS, DANIEL	1	E-598	0700-1900	Mission ICP	Mission ICP
DOZ2 BLACK RANGE		10/29	SHEPPERD, BRANDON	2	E-581	0700-1900	Mission ICP	Mission ICP
DOZ2 HAYDEN		10/25	HAYDEN, CODY	2	E-537	0700-1900	Mission ICP	Mission ICP
EXCA T2 YLU0172		10/28	PARKER, KACY	2	E-568	0700-1900	Mission ICP	Mission ICP
EXCA T3 5157		10/28	PARKER, KYLE	2	E-580	0700-1900	Mission ICP	Mission ICP
EXCA T2		10/31	HAYDEN, COLTON	1	E-578	0700-1900	Mission ICP	Mission ICP
EXCA T2		10/30	KRUCKEBERG, JAMES	1	E-579	0700-1900	Mission ICP	Mission ICP
CHIP T3 CAT LAND		10/28	ALDRICH, VANESSA	3	E-575	0700-1900	Mission ICP	Mission ICP
TFLD RYAN		10/26	RYAN, JOHN	1	C O-60	0700-1900	Mission ICP	Mission ICP
ARCH RAY		10/29	RAY, MOLLY	1	O-1216	0700-1900	Mission ICP	Mission ICP
ARCH KISSINGER		10/27	KISSINFER, KRYSTAL	1	O-1228	0700-1900	Mission ICP	Mission ICP
AMBU SLO1 4X4	X	11/5	WEIS, TREVOR	2	C E-16	0700-1900	Mission ICP	Mission ICP
EMPF COLOMBO	X	11/3	COLOMBO, ROGER	1	C O-9	0700-1900	Mission ICP	Mission ICP

6. Work Assignments:

TASK: Restore roads, dozer lines and drainage systems. Reduce visual impacts of the fire lines. Monitor the fire's edge.
 PURPOSE: Minimize potential for erosion and sediment delivery to water courses.
 END STATE: To restore firelines and transportation routes back to prefire conditions as reasonably possible.
 RISK ASSESSMENT: Stay alert for drivers in the fire area and in restricted areas. Watch for snags and rollout onto roads and working around heavy equipment.

7. Special Instructions:

- All medical resources MUST check in with Los Padres Dispatch and Division Supervisor once in place.
- READs and the BAER Team will check in and out with Division.
- Assume all divisions have Sudden Oak Death Pathogen and clean and disinfect everything. No weed wash is available use a commercial wash station where sump collection is done to prevent the further spread.
- For Mop up and Patrol – Do not go off the road (UXO).
- Utilize Collector to mark all accountable property (pumps, hose, tanks...), attach a picture of the serial number with the LAT and LONG.
- Use call outs when traveling on Nacimiento Ferguson Road.
- INITIAL ATTACK RESOURCES will maintain a state of readiness for response. All responses will be initiated by Los Padres Dispatch. Resources will notify their DIVS if they are dispatched. Once the resource is cancelled/released they will return to the incident and notify comms that they are back in their division.

8. Communications

Name	Ch	Function	Rx Freq	Rx Tone	Tx Freq	Tx Tone	Notes
LPF AN4	1	COMMAND	171.5500	CSQ	164.1500	136.5	LPF ADMIN NET ALDER PK T4
LPF AN6	2	COMMAND	171.5500	CSQ	164.1500	156.7	LPF ADMIN NET PIEDRAS BLANCAS T6
LPF AN8	3	COMMAND	171.5500	CSQ	164.1500	103.5	LPF ADMIN NET CONE PK T8
LPF AN10	4	COMMAND	171.5500	CSQ	164.1500	107.2	LPF ADMIN NET CHEWS RIDGE T10
LPF AN13	5	COMMAND	171.5500	CSQ	164.1500	141.3	LPF ADMIN NET ANDERSON T13
LPF AN15	6	COMMAND	171.5500	CSQ	164.1500	162.2	LPF ADMIN NET CALANDRA T15
A/G TAC	7	A/G TACTICAL	163.1500	CSQ	163.1500	CSQ	AIR TO GROUND TAC DOLAN FIRE
A/G CMD	8	A/G COMMAND	167.5500	CSQ	167.5500	CSQ	AIR TO GROUND CMD DOLAN FIRE
LPF TAC4	9	TACTICAL	163.7125	CSQ	163.7125	CSQ	LPF TACTICAL DOLAN FIRE
FOR NET8	13	COMMAND	170.4625	CSQ	164.9125	103.5	IA ONLY COMMAND
LPF TAC3	14	TACTICAL	168.2625	CSQ	168.2625	CSQ	IA ONLY TACTICAL
CALCORD	15	MEDEVAC A/G	156.0750	156.7	156.0750	156.7	MEDICAL EVAC EMERGENCIES ONLY
AIRGUARD	16	AIRGUARD	168.6250	CSQ	168.6250	110.9	EMERGENCIES ONLY

9. Prepared by: Name: Glenn Palmgren PSC2 (t)

Signature: /s/ Glenn R. Palmgren

ICS 204	Date/Time: 10/24/2020	2000	Personnel Count: 57
----------------	-----------------------	------	---------------------

ASSIGNMENT LIST (ICS 204 WF)

CONTROLLED UNCLASSIFIED INFORMATION//BASIC

1. Incident Name: Dolan and Coleman Fires	2. Operational Period: Date From: 10/25/2020 Date To: 10/25/2020 Time From: 0700 Time To: 1900	3. Branch Division Supp Repair North
--	---	--

Page 1 of 1

4. Operations Personnel: Field Ops Section Chief: Joe Alyea Branch Director: Division/Group Supervisor: S. Cameron	Planning Ops: Keith Murphy Branch Safety: Air Attack:
--	--

5. Resources Assigned: ***Resources in BOLD are identified as IA resources***

Resource Identifier	ALS	LWD	Leader	Personnel	Request #	Hours	Report To	Return To
HC2 SUNDOWNERS		11/4	HIOTT, PAUL	18	C-128	0700-1900	Mission ICP	Mission ICP
DOZ2 ALGERINE WEST		10/29	MONTE, WEST	2	E-569	0700-1900	Mission ICP	Mission ICP
EXCA T1 BDRM		10/29	PAINTER, STEVE	1	E-590	0700-1900	Mission ICP	Mission ICP
EXCA T2 BLACK RANGE		11/2	PEARSON, TIMOTHY	2	E-548	0700-1900	Mission ICP	Mission ICP
AMBU AMR2				2		0700-1900	Mission ICP	Mission ICP
EMPF BLINCOE	X	11/5	BLINCOE, JIM	1	O-1233	0700-1900	Mission ICP	Mission ICP

6. Work Assignments:
 TASK: Restore dozer and hand lines. Reduce visual impacts of the fire lines.
 PURPOSE: Minimize potential for erosion and sediment delivery to water courses.
 END STATE: To restore firelines back to prefire conditions as reasonably possible.
 RISK ASSESSMENT: Stay alert for drivers in the fire area and in restricted areas. Watch for snags and rollout onto roads and working around heavy equipment.

7. Special Instructions:
 -All medical resources MUST check in with Los Padres Dispatch and Division Supervisor once in place.
 -READs and the BAER Team will check in and out with Division.
 -Assume all divisions have Sudden Oak Death Pathogen and clean and disinfect everything. No weed wash is available use a commercial wash station where sump collection is done to prevent the further spread.
 -For Mop up and Patrol – Do not go off the road (UXO).
 -Utilize Collector to mark all accountable property (pumps, hose, tanks...), attach a picture of the serial number with the LAT and LONG.
 -Use call outs when traveling on Nacimiento Ferguson Road.
 -INITIAL ATTACK RESOURCES will maintain a state of readiness for response. All responses will be initiated by Los Padres Dispatch. Resources will notify their DIVS if they are dispatched. Once the resource is cancelled/released they will return to the incident and notify comms that they are back in their division.

8. Communications

Name	Ch	Function	Rx Freq	Rx Tone	Tx Freq	Tx Tone	Notes
LPF AN4	1	COMMAND	171.5500	CSQ	164.1500	136.5	LPF ADMIN NET ALDER PK T4
LPF AN6	2	COMMAND	171.5500	CSQ	164.1500	156.7	LPF ADMIN NET PIEDRAS BLANCAS T6
LPF AN8	3	COMMAND	171.5500	CSQ	164.1500	103.5	LPF ADMIN NET CONE PK T8
LPF AN10	4	COMMAND	171.5500	CSQ	164.1500	107.2	LPF ADMIN NET CHEWS RIDGE T10
LPF AN13	5	COMMAND	171.5500	CSQ	164.1500	141.3	LPF ADMIN NET ANDERSON T13
LPF AN15	6	COMMAND	171.5500	CSQ	164.1500	162.2	LPF ADMIN NET CALANDRA T15
A/G TAC	7	A/G TACTICAL	163.1500	CSQ	163.1500	CSQ	AIR TO GROUND TAC DOLAN FIRE
A/G CMD	8	A/G COMMAND	167.5500	CSQ	167.5500	CSQ	AIR TO GROUND CMD DOLAN FIRE
LPF TAC4	9	TACTICAL	163.7125	CSQ	163.7125	CSQ	LPF TACTICAL DOLAN FIRE
FOR NET8	13	COMMAND	170.4625	CSQ	164.9125	103.5	IA ONLY COMMAND
LPF TAC3	14	TACTICAL	168.2625	CSQ	168.2625	CSQ	IA ONLY TACTICAL
CALCORD	15	MEDEVAC A/G	156.0750	156.7	156.0750	156.7	MEDICAL EVAC EMERGENCIES ONLY
AIRGUARD	16	AIRGUARD	168.6250	CSQ	168.6250	110.9	EMERGENCIES ONLY

9. Prepared by: Name: Glenn Palmgren PSC2 (t) Signature: /s/ Glenn R. Palmgren

CONTROLLED UNCLASSIFIED INFORMATION//BASIC

ASSIGNMENT LIST (ICS 204 WF)

CONTROLLED UNCLASSIFIED INFORMATION/BASIC

1. Incident Name: Dolan and Coleman Fires		2. Operational Period: Date From: 10/25/2020 Date To: 10/25/2020 Time From: 0700 Time To: 1900			3. Branch Division Coleman			
4. Operations Personnel:					Page 1 of 1			
Field Ops Section Chief: Joe Alyea				Planning Ops: Keith Murphy				
Branch Director:				Branch Safety:				
Division/Group Supervisor: M.Brown, T.Gonzalez, B.Richwine(t), G.Laird(t)				Air Attack:				
5. Resources Assigned: ***Resources in BOLD are identified as IA resources***								
Resource Identifier	ALS	LWD	Leader	Personnel	Request #	Hours	Report to	Return to
ARROYO GRANDE FL CW IA		10/31	LARSON, SETH	10	A-171	0700-1900	Tusi Helibase	Tusi Helibase
HC2IA VANDENBERG CREW 2		10/25	HENDRICKS, JESSE	19	D C-115	0700-1900	Mission ICP	Mission ICP
HC2IA COBRAS 1		11/2	PALAZUELOS, FRANCISCO	20	C-5	0700-1900	Mission ICP	Mission ICP
HC2 BLACK EAGLES		10/29	BEDOLLA, REYES	21	D C-126	0700-1900	Mission ICP	Mission ICP
HC2 PACIFIC OASIS		10/30	MAZA, JASON	20	D C-123	0700-1900	Mission ICP	Mission ICP
HC2 SANTA LUCIA		11/5	GUZMAN, MATTHEW	16	C-12	0700-1900	Mission ICP	Mission ICP
WFM2 SLATE MOUNTAIN		11/4	REYES, ANGEL	10	O-86	0700-1900	Mission ICP	Mission ICP
ENG3 CA-FHL E8833		10/25	FRYER, GREG	5	D E-455	0700-1900	Mission ICP	Mission ICP
ENG4 ID TRAILBLAZERS		10/26	CRAWLEY, BRIAN	3	D E-499	0700-1900	Mission ICP	Mission ICP
ENG5 WILDLAND FIRE E7		10/26	WIMMER, MATT	3	D E-227	0700-1900	Mission ICP	Mission ICP
ENG6 RKY PT E324		10/28	COLBRY, SETH	3	D E-85	0700-1900	Mission ICP	Mission ICP
ENG6 CA-STB E673		11/1	KENDALL, ROBERT	3	D E-562	0700-1900	Mission ICP	Mission ICP
DOZ2 FHL 8894		10/29	ROSA, RON	1	D E-583	0700-1900	Mission ICP	Ft Hunter Liggett
DOZ2 LPF		10/26	FEURCK, MIKE	3	D E-572	0700-1900	Mission ICP	Mission ICP
DOZ2 ENF		10/26	LANDGENDER, DAN	2	D E-576	0700-1900	Mission ICP	Mission ICP
DOZ2 CM CONSTRUCTION		10/29	EDSALL, STEVEN	2	D E-582	0700-1900	Mission ICP	Mission ICP
FMOD SWEDBERG		11/4	FRICKEL, KELLY	2	D O-1273	0700-1900	Mission ICP	Mission ICP
FMOD SWEDBERG		11/4	WADLEY, LOGAN	2	D O-1274	0700-1900	Mission ICP	Mission ICP
TFLD WEBSTER		11/4	WEBSTER, RYAN	1	D O-1292	0700-1900	Mission ICP	Mission ICP
STEQ(t) DEAN		10/31	DEAN, STEVEN	1	D O-1236	0700-1900	Mission ICP	Mission ICP
HEQB DAUGHERTY (FHL)		10/29	DAUGHERTY, KEVIN	1	D O-1240	0700-1900	Mission ICP	Ft Hunter Liggett
HEQB COLEMAN		10/30	COLEMAN, ALANI	1	D O-1238	0700-1900	Mission ICP	Mission ICP
AMBU ATASCADERO 4X4	X	11/3	LAYTON, COLETTE	2	E-14	0700-1900	Mission ICP	Mission ICP
EMPF O'GORMAN	X	11/6	GREG O'GORMAN	1	D O-1234	0700-1900	Mission ICP	Mission ICP
EMPF DOLL	X	11/5	DOLL, KENNY	1	O-10	0700-1900	Mission ICP	Mission ICP
EMPF(t) HARDIN	X	11/5	HARDIN, GARRETT	1	O-9	0700-1900	Mission ICP	Mission ICP
6. Work Assignments:								
TASK: Construct containment line around the Coleman Fire.								
PURPOSE: Create line that will prevent the fire from spreading.								
END STATE: Containment line around the entire fire and fireline is secure.								
RISK ASSESSMENT: Very steep terrain, heavy air operations, and emerging incident in wilderness.								
7. Special Instructions:								
-All medical resources MUST check in with Los Padres Dispatch and Division Supervisor once in place.								
-READs and the BAER Team will check in and out with Division.								
-Assume all divisions have Sudden Oak Death Pathogen and clean and disinfect everything. No weed wash is available use a commercial wash station where sump collection is done to prevent the further spread.								
-For Mop up and Patrol – Do not go off the road (UXO).								
-Utilize Collector to mark all accountable property (pumps, hose, tanks...), attach a picture of the serial number with the LAT and LONG.								
-INITIAL ATTACK RESOURCES will maintain a state of readiness for response. All responses will be initiated by Los Padres Dispatch. Resources will notify their DIVS if they are dispatched. Once the resource is cancelled/released they will return to the incident and notify comms that they are back in their division.								
8. Communications								
Name	Ch	Function	Rx Freq	Rx Tone	Tx Freq	Tx Tone	Notes	
LPF AN4	1	COMMAND	171.5500	CSQ	164.1500	136.5	LPF ADMIN NET ALDER PK T4	
LPF AN6	2	COMMAND	171.5500	CSQ	164.1500	156.7	LPF ADMIN NET PIEDRAS BLANCAS T6	
LPF AN8	3	COMMAND	171.5500	CSQ	164.1500	103.5	LPF ADMIN NET CONE PK T8	
LPF AN10	4	COMMAND	171.5500	CSQ	164.1500	107.2	LPF ADMIN NET CHEWS RIDGE T10	
LPF AN13	5	COMMAND	171.5500	CSQ	164.1500	141.3	LPF ADMIN NET ANDERSON T13	
LPF AN15	6	COMMAND	171.5500	CSQ	164.1500	162.2	LPF ADMIN NET CALANDRA T15	
NIFC T2	10	TACTICAL	168.2000	CSQ	168.2000	CSQ	NIFC T2 - COLEMAN FIRE DIV A	
NIFC T3	11	TACTICAL	168.6000	CSQ	168.6000	CSQ	NIFC T3 - COLEMAN FIRE DIV Z	
COLE A/G	12	A/G	169.2000	CSQ	169.2000	CSQ	AIR TO GROUND COLEMAN FIRE	
FOR NET8	13	COMMAND	170.4625	CSQ	164.9125	103.5	IA ONLY COMMAND	
LPF TAC3	14	TACTICAL	168.2625	CSQ	168.2625	CSQ	IA ONLY TACTICAL	
CALCORD	15	MEDEVAC A/G	156.0750	156.7	156.0750	156.7	MEDICAL EVAC EMERGENCIES ONLY	
AIRGUARD	16	AIRGUARD	168.6250	CSQ	168.6250	110.9	EMERGENCIES ONLY	
9. Prepared by: Name: Glenn Palmgren PSC2 (t)								
Signature: /s/ Glenn R. Palmgren								
ICS 204		Date/Time: 10/24/2020 2000			Personnel Count: 154			

ASSIGNMENT LIST (ICS 204 WF)

CONTROLLED UNCLASSIFIED INFORMATION//BASIC

1. Incident Name: Dolan and Coleman Fires	2. Operational Period: Date From: 10/25/2020 Date To: 10/25/2020 Time From: 0700 Time To: 1900	3. Branch Group Staging
--	---	---

4. Operations Personnel: Field Ops Section Chief: Joe Alyea	Planning Ops: Keith Murphy
Branch Director:	Branch Safety:
Division/Group Supervisor:	Air Attack:

5. Resources Assigned:	***Resources in BOLD are identified as IA resources***							
Resource Identifier	ALS	LWD	Leader	Personnel	Request #	Hours	Report to	Return to
EXCA T3 FHL 8890		10/29	FOSLINE, TYLER	1	E-591	0700-1900	Ft Hunter Liggett	Ft Hunter Liggett

6. Work Assignments:

Planning Ops will assign work.

7. Special Instructions:

8. Communications

Name	Ch	Function	Rx Freq	Rx Tone	Tx Freq	Tx Tone	Notes
Refer to the Communications plan for TX/RX frequencies. Local forest is responsible for controlling all radio traffic.							

9. Prepared by: Name: Glenn Palmgren PSC2 (t)

Signature: /s/ Glenn R. Palmgren

AIR OPERATIONS SUMMARY (ICS 220)

1. Incident Name: Coleman	2. Operational Period: Date From: 10/25/20 Date To: 10/25/20 Time From: 0700 Time To: 2100	3. Sunrise: 07:22 Sunset: 18:18									
4. Remarks (safety notes, hazards, air operations special equipment, etc.): All GPS data to be collected in DEGREES, DECIMAL MINUTES format Hoist A/C: CHP H70 Paso Robles SBC H308 Santa Ynez NVG/ALS H406 BEU Bear Valley Day Hoist/BLS *****Utilize CALCCORD Freq. for hoist ops*****		5. Ready Alert Aircraft: Medivac: Mercy Air 20 FHL New Incident: H527									
7. Personnel:		8. Frequencies:									
	Name:	AM	FM								
Air Operations Branch Director	Phone Number:	133.2250	TFR								
Air Support Group Supervisor	Air/Ground	169.200	168.3375								
Air Tactical Group Supervisor	Command	RX 171.5500	NONE								
Helicopter Coordinator	Deck Coordinator	TX Tone 8 164.1500	**Medevac A/G** CALCCORD Rx 156.0750 tn 156.7 / Tx 156.0750 tn 156.7								
Helibase Manager	Take-Off & Landing Coordinator	168.3500	Other Fixed-Wing Aircraft:								
John Kaisersatt	Air Guard	168.625 T1 110.9	NONE								
10. Helicopters (use additional sheets as necessary):											
FAA N#	Category/Kind/Type	Make/Model	Base	Available	Start	Remarks					
H527 / N534HQ	Type 2	Bell 205 A1 ++	Tusi	0830	0800	Tanked					
N48CC	Type 2 Restricted	Bell UH1H 703	Tusi	0830	0800	Tanked					
HT-1043T	Type 1	Sikorsky S61A	Tusi	0830	0800	Bucket					
HT-91158	Type 1	Sikorsky S-61	Tusi	0830	0800	Tanked					
11. Prepared by: Name: Jeremy Blake				Position/Title: HEBM				Signature: _____			
ICS 220, Page 1				Date/Time: 10/24/20 1300				Signature: _____			

AIR OPERATIONS SUMMARY (ICS 220)

1. Incident Name: Dolan		2. Operational Period: Date From: 10/25/20 Time From: 0700		3. Sunrise: 07:22		Sunset: 18:18					
		Date To: 10/25/20 Time To: 2100									
4. Remarks (safety notes, hazards, air operations special equipment, etc.): All GPS Data to be collected in DEGREES, DECIMAL MINUTES format Hoist A/C: CHP H70 Paso Robles SBC H308 Santa Ynez NVG/ALS H406 BEU Bear Valley Day Hoist/BLS *****Utilize CALCCORD Freq. for hoist ops*****				5. Ready Alert Aircraft: Medivac: Mercy Air 20 FHL New Incident: H527				6. Temporary Flight Restriction Number: Altitude: Center Point: (NO TFR)			
7. Personnel: Name: _____ Phone Number: _____				8. Frequencies: AM FM		9. Fixed-Wing (category/kind/type, make/model, N#, base): Air Tactical Group Supervisor Aircraft: NONE					
Air Operations Branch Air Support Group Supervisor Air Tactical Group Supervisor Helicopter Coordinator Helibase Manager				Air/Air Rotary-Wing – Flight Following Air/Ground Command Deck Coordinator Take-Off & Landing Coordinator Air Guard		NONE **Medevac A/G** CALCCORD Rx 156.0750 tn 156.7 / Tx 156.0750 tn 156.7 Other Fixed-Wing Aircraft: NONE					
10. Helicopters (use additional sheets as necessary):											
FAA N#	Category/Kind/Type	Make/Model	Base	Available	Start	Remarks					
11. Prepared by: Name: <u>Jeremy Blake</u> Position/Title: <u>HEBM</u> Signature: _____ Date/Time: <u>10/24/20 1300</u>											
ICS 220, Page 1											

INCIDENT RADIO COMMUNICATIONS PLAN I-205		1. INCIDENT NAME		2. DATE/TIME PREPARED		3. OPERATIONAL PERIOD DATE/TIME					
		DOLAN AND COLMAN FIRES		10/24/2020 18:30		DAY SHIFT 10/25/2020					
4. BASIC RADIO CHANNEL UTILIZATION											
Ch #	Function	Channel Name	Assignment	RX Freq	N/W	RX Tone/NAC	TX Freq	N/W	TX Tone/NAC	Mode Analog (A) Digital (D) Mixed (M)	Remarks
1	COMMAND	LPF AN 4	ALL DIVISIONS	171.5500	N	CSQ	164.1500	N	136.5	A	LPF ADMIN NET ALDER PK T4 FOREST DISP NW OF FIRE
2	COMMAND	LPF AN 6	ALL DIVISIONS	171.5500	N	CSQ	164.1500	N	156.7	A	LPF ADMIN NET PIEDRAS BLANCAS T6 FOREST DISPATCH SOUTH OF FIRE
3	COMMAND	LPF AN 8	ALL DIVISIONS	171.5500	N	CSQ	164.1500	N	103.5	A	LPF ADMIN NET CONE PK T8 ALL DIVISIONS CONTACT FOREST DISP
4	COMMAND	LPF AN10	ALL DIVISIONS	171.5500	N	CSQ	164.1500	N	107.2	A	LPF ADMIN NET CHEWS RIDGE T10 DIVISION A/F/K CONTACT FOREST DISP
5	COMMAND	LPF AN13	ALL DIVISIONS	171.5500	N	CSQ	164.1500	N	141.3	A	LPF ADMIN NET ANDERSON T13 DIVISION A/F/K CONTACT FOREST DISP
6	COMMAND	LPF AN15	ALL DIVISIONS	171.5500	N	CSQ	164.1500	N	162.2	A	LPF ADMIN NET CALANDRA T15 FOREST DISPATCH EAST OF FIRE
7	A/G TACTICAL	A/G TAC	DOLAN FIRE A/G	163.1500	N	CSQ	163.1500	N	CSQ	A	AIR TO GROUND TAC DOLAN FIRE
8	A/G COMMAND	A/G CMD	DOLAN FIRE	167.5500	N	CSQ	167.5500	N	CSQ	A	AIR TO GROUND CMD DOLAN FIRE
9	TACTICAL	LPF TAC4	DOLAN FIRE	163.7125	N	CSQ	163.7125	N	CSQ	A	LPF TACTICAL - DOLAN FIRE SUPPRESSION REPAIR AND SECO DIV
10	TACTICAL	NIFC T2	COLEMAN FIRE	168.2000	N	CSQ	168.2000	N	CSQ	A	NIFC T2- COLEMAN FIRE DIV A
11	TACTICAL	NIFC T3	COLEMAN FIRE	168.6000	N	CSQ	168.6000	N	CSQ	A	NIFC T3- COLEMAN FIRE DIV Z
12	A/G	COLE A/G	COLEMAN FIRE A/G	169.2000	N	CSQ	169.2000	N	CSQ	A	AIR TO GROUND COLEMAN
13	COMMAND	FOR NET8	IA WITH FOREST	170.4625	N	CSQ	164.9125	N	103.5	A	IA ONLY COMMAND
14	TACTICAL	LPF TAC3	IA WITH FOREST	168.2625	N	CSQ	168.2625	N	CSQ	A	IA ONLY TACTICAL
15	MEDEVAC A/G	CALCORD	ALL DIVISIONS	156.0750	N	156.7	156.0750	N	CSQ	A	MEDICAL EVAC EMERGENCIES ONLY
16	AIRGUARD	AIRGUARD	ALL DIVISIONS	168.6250	N	CSQ	168.6250	N	110.9	A	EMERGENCIES ONLY
5. Special Instructions:											
6. I-205 Prepared By: Communications Unit Leader				Name: <i>Peter Willis</i>				Signature: <i>Peter Willis</i>			

EA Silver Team-Contact List

<u>POSITION</u>	<u>NAME</u>	<u>Contact Number</u>	<u>Virtual</u>
Incident Command			
ICT2	Steve Goldman	414-308-7775	
ICT2(t)	Lucas Minton	928-707-1940	
ICT3 (t)	Mark Alvarado	805-746-0087	
Safety			
SOF2	Chris Woods	573-315-8394	
MEDL	Mike Passarelli	330-352-7534	
Public Information			
PIO2	Micah Bell	219-405-0125	Virtual
POIO2	Jacob Welsh	541-977-2756	
Liason			
LOFR	Roger Goldman	812-340-4266	
Operations			
OSC2	Keith Murphy	906-250-1382	
OSC2	Joe Alyea	989-305-1227	
DIVS	Mark Brown	207-233-9348	
DIVS	Mike Rice	218-368-2087	
DIVS(t)	Rob Shields	906-630-5092	
DIVS(t)	Patrick Johnson	218-370-0321	
Aviation			
Planning			
PSC2(t)	Glenn Palmgren	517-243-3487	
DMOB	Dave Lemmein	231-631-1597	
SITL(t)	Ben Garrett	715-579-3056	
GISS	Matt Judd	651-587-1351	
GISS (t)	Brian Houseman	910-840-2801	
IMET	Jack Messick	208-241-1046	
ITSS	Bill Whitacre	573-578-1889	Virtual
ITSS	Brian Lynch	845-270-5398	
Logistics			
LSC2	Bob Feldtz	949-861-1142	
LSC2(t)	Tim Oland	608-799-1805	
FACL	Dave Avery	218-370-9805	
FACL	Tim Murdock	805-423-4857	
GSUL	John Badaracco	805-833-1106	
SPUL	Mike Beeman	805-833-1106	
FDUL (t)	Mike Johnson	218-235-9063	
BCMG	Brian Bellew	916-749-0986	
ORDM	Chris Adamcik	936-238-8819	Virtual
ORDM	Trisha Dutrey	209-639-9105	
Orders:		cell: 936-238-8819	desk: 936-875-4803
COML	Peter Willis	320-630-3193	
Finance			
FSC2	Peter Beringer	603-970-1338	
FSC2(t)	Deb Niles	989-745-2394	Virtual
TIME	Mary Coleman	573-210-7073	Virtual
TIME(t)	Valarie Sanchez	505-269-7808	Virtual
PTRC	Rosemary Johnson	218-252-2363	
EQTR	Zach Palmer	530-524-0675	

MEDICAL PLAN ICS 206		1. INCIDENT DOLAN/COLEMAN		2. DATE PREPARED 10/24/2020		3. TIME PREPARED 1800		4. OPERATIONAL PERIOD 10/25/2020, 0600-2200			
5. INCIDENT MEDICAL AID STATIONS											
MEDICAL AID STATIONS				LOCATION				PARAMEDICS			
								YES NO			
Medical Unit				ICP				X			
6. TRANSPORTATION											
A. AIR AMBULANCES											
NAME			LOCATION			PHONE		PARAMEDICS			
								YES NO			
911 Provider Day-Night Mission			Variable - (40 min ETA)			Los Padres ECC 805-961-5727		X			
CHP H70 Hoist Day / Variable Night			Paso Robles, CA - (20 min ETA)			Paso Robles ECC 805-239-3553		X			
Mercy Air Night			FHL, CA - (10 min ETA)			FHL ECC 831-386-2526		X			
B. GROUND AMBULANCES & REM TEAMS											
NAME		Last Day		LOCATION				PARAMEDICS			
								YES NO			
AMR- 2				DP 31 (Camp Grounds)				X			
Jim Blincoe EMP-F		11/5		Arroyo Seco				X			
Roger Colombo EMP-F		11/4		DP-57				X			
Melanie Miller EMT-P		10/31		ICP				X			
John Seymer EMT-A		10/31		Tusi Helibase				X			
Atascadero Ambulance 4X4		11/5		Coleman Fire DP-5				X			
SLO-1 Ambulance 4X4		11/6		DP-57				X			
Barona FD Doll & Hardin EMPF		11/6		Coleman DP-76				X			
Greg O'Gorman EMPF		11/7		Coleman				X			
7. HOSPITALS											
NAME		ADDRESS		TRAVEL TIME		PHONE		HELIPAD		BURN CTR	
				AIR	GRND			YES	NO	YES	NO
CHOMP LVL 3		23625 Holman Hwy Monterey, CA		N/A	1hr 20mi	831-624-5311			X		X
Mee Memorial LVL 3		300 Canal St King City, CA		15 Min	20min	831-385-6000		X			X
Santa Clara Valley Med Ctr LVL 1		751 S. Bascom Ave. San Jose, CA NN37 18.7713 X 121 55.9960		60 Min	2hrs	408-885-5000		X		X	
Natividad Medical Center LVL 2		1441 Constitution Blvd. Salinas Ca N36 41.8002 X W121 37.9853		25 Min	60 Min	831-755-6268		X			
Community Regional Med Ctr LVL 1		2823 Fresno St. Fresno, Ca N36 44.5702 X W119 47.0913		90 Min	180 Min	559-459-7401		X		X	
Big Sur Health Center Medical Clinic		46968 CA-1 Big Sur, CA 93920		N/A	2hrs	831-667-2580			X		X
8. MEDICAL EMERGENCY PROCEDURES											
LINE-EMERGENCY MEDICAL DAY PLAN 0700 - 1930: - Crew Supervisor to contact Division Supervisor/Operations with: <ul style="list-style-type: none"> Patient Complaint, Condition and Location via Tactical or Command frequency. Priority 1/Red & 2/Yellow Patients trigger Incident within Incident (IWI). - Division Supervisor/Operation contacts Los Padres Communications: <ul style="list-style-type: none"> Division Supervisor or POC* will run "Medical –Emergency" on the Los Padres frequency. Division Supervisor or POC* to use "Medical Incident Report" worksheet on back of this page or back of IRPG. Los Padres Communication contacts Medical Unit Leader on the Command frequency or camp frequency. POC* (Point of Contact) and/or Operations						LINE "NON-EMERGENCY INCIDENT" DAY PLAN: - Crew Supervisor to contact Division Supervisor with: <ul style="list-style-type: none"> Patient Complaint, Condition and Location via Tactical or Los Padres frequency. Priority 3/Green Patients do not trigger Incident within Incident (IWI). - Division Supervisor contacts Los Padres Communications: <ul style="list-style-type: none"> Division Supervisor or POC* will run "Non-Emergency Incident" on the Los Padres frequency. Division Supervisor or POC* will use "Medical Incident Report" worksheet on the back of this page or back of IRPG. Los Padres Communications contacts Medical Unit Leader on the Command frequency or camp frequency. AFTER HOUR MEDICAL PLAN 1930 - 0700: - Contact AMR Dispatch at 911 or 831-796-6444, then contact MEDL who will be located in the medical tent during the night.					
ICS 206		9. PREPARED BY: (Medical Unit Leader) Mike Passarelli MEDL				10. REVIEWED BY: (Safety Officer) Chris Woods SOF2(t)					

COVID-19 Best Practices / Mitigation

Minimize risk and limit exposure to COVID-19 by daily screening, minimizing large group settings, social distancing, wearing face coverings, hand washing, and practicing module of one concept.

At the beginning of the shift, supervisors should remind their personnel to self-screen for symptoms.

This document to be placed in the daily IAP

WILDLAND FIRE COVID-19 SCREENING TOOL

Today or in the past 24 hours, have you had any of the following symptoms¹?

Symptom
Cough more than expected?
Shortness of breath or difficulty breathing?
Fever? Chills?
Muscle pain, outside your normal for firefighting?
Sore throat?
New loss of taste or smell?
Fatigue, outside your normal for firefighting?
Headache, outside your normal for firefighting?
Congestion or runny nose, outside your normal for firefighting?
Nausea or vomiting
Diarrhea
<i>* Take temperature with no-touch thermometer, if available *</i>

¹Symptoms of Coronavirus

<https://www.cdc.gov/coronavirus/2019-ncov/symptoms-testing/symptoms.html>

Do your part to minimize your risk of exposure and limit the spread COVID-19.

Public Considerations

- ⇒ Wear a face covering when in public.
- ⇒ Wash your hands often.
- ⇒ Use hand sanitizer after pumping gas.
- ⇒ Use hand sanitizer prior to getting into your vehicle after visiting the grocery store or a restaurant.
- ⇒ Set the example while in the public eye.

**Keep in mind that fire camp is in a city with a populous and the potential for the COVID virus to be present is greater.*

If you answered Yes to these symptoms, report it to your supervisor immediately, self-isolate away from other people until given direction and call **MEDICAL**.

COVID-19 OPERATIONAL FLOWCHART

PERSONNEL SHALL BE SCREENED FOR S&S OF COVID-19 AT CHECK-IN

ALL SUPERVISORS SHALL MONITOR THEIR PERSONNEL

- ALL PERSONNEL SHALL:**
- PRACTICE PHYSICAL DISTANCING
 - WEAR A MASK WHEN LESS THAN 6' FROM OTHERS
 - SHALL SELF-MONITOR FOR S&S
 - WASH HANDS OFTEN / USE HAND SANITIZER
 - AVOID FACIAL CONTACT WITH YOUR HANDS
 - NOTIFY THE MEDICAL UNIT OF ANY FLU-LIKE S&S
 - DO NOT SHARE TOOLS / EQUIPMENT

- SIGNS & SYMPTOMS INCLUDE:**
- CHILLS OR FEVER > 100.4°
 - COUGH, AND/OR SHORT OF BREATH
 - LOSS OF TASTE OR SMELL, SORE THROAT
 - CONGESTION, RUNNY NOSE
 - FATIGUE, HEADACHE, BODY ACHES
 - NAUSEA OR VOMITING
- (Do not report to your assignment if you are sick)*

- PERSONNEL WHO DEVELOP FLU-LIKE SYMPTOMS SHALL:**
- NOTIFY THEIR IMMEDIATE SUPERVISOR
 - REPORT TO THE MEDICAL UNIT FOR EVALUATION

- MEDICAL UNIT WILL:**
- EVALUATE PERSONNEL / MAKE RECOMMENDATIONS
 - TRACK PERSONNEL FOR THE INCIDENT
 - CONTACT-TRACING
 - MAKE NECESSARY TEAM & FOREST NOTIFICATIONS

- PERSONNEL EXPERIENCING FLU-LIKE SYMPTOMS SHALL BE TESTED:**
- SEEK MEDICAL CARE FOR FURTHER TESTING (TESTING SITES PROVIDED BY THE MEDL)
 - AFTER TESTING IS COMPLETE, PERSONNEL MAY HAVE TO QUARANTINE WHILE AWAITING RESULTS

- IF COVID-POSITIVE:**
- PERSONNEL SHALL ISOLATE AT APPROVED LOCATION UNTIL DEMOB'D (LOCATION PROVIDED BY THE MEDL)

- IF NEGATIVE:**
- FOLLOW AGENCY SPECIFIC GUIDELINES
 - OR, PER CDC, NO FURTHER ACTION REQUIRED

- SUPERVISOR SHOULD:**
- MAKE NOTIFICATIONS TO HOME UNIT
 - BEGIN AGENCY WORK-COMP PROCESS
 - COMPLETE DEMOB PROCESS

- PERSONNEL: CONTINUE TO SELF-MONITOR**
(Do not report to your assignment if you are sick)
IF PERSONNEL IS TOO SICK, NOTIFY SUPERVISOR

IMT WILL PROVIDE DIRECTION AND SUPPORT UNTIL RECEIVED BY THE HOME UNIT

EA IMT Silver - MEDICAL UNIT WILL TRACK AND MONITOR ALL COVID RELATED EXPOSURES

IN-CAMP ISOLATION FLOWCHART:

- IN-CAMP GUIDELINES AS FOLLOWS:**
- PERSONNEL SHALL ISOLATE AT APPROVED LOCATION ONCE EVALUATED BY MEDICAL STAFF
 - MEDICAL UNIT WILL MONITOR PERSONNEL UNTIL DEMOBILIZED FROM THE INCIDENT

SHOULD PERSONNEL'S HEALTH STATUS DETERIORATE, CONTACT THE MEDICAL UNIT ASAP

- MEDICAL UNIT SHALL:**
- CONTACT COMMUNICATIONS - ARRANGE FOR TRANSPORTATION TO HOSPITAL IF NEEDED
 - CALL THE IMMEDIATE SUPERVISOR
 - MAKE NECESSARY TEAM & FOREST NOTIFICATIONS

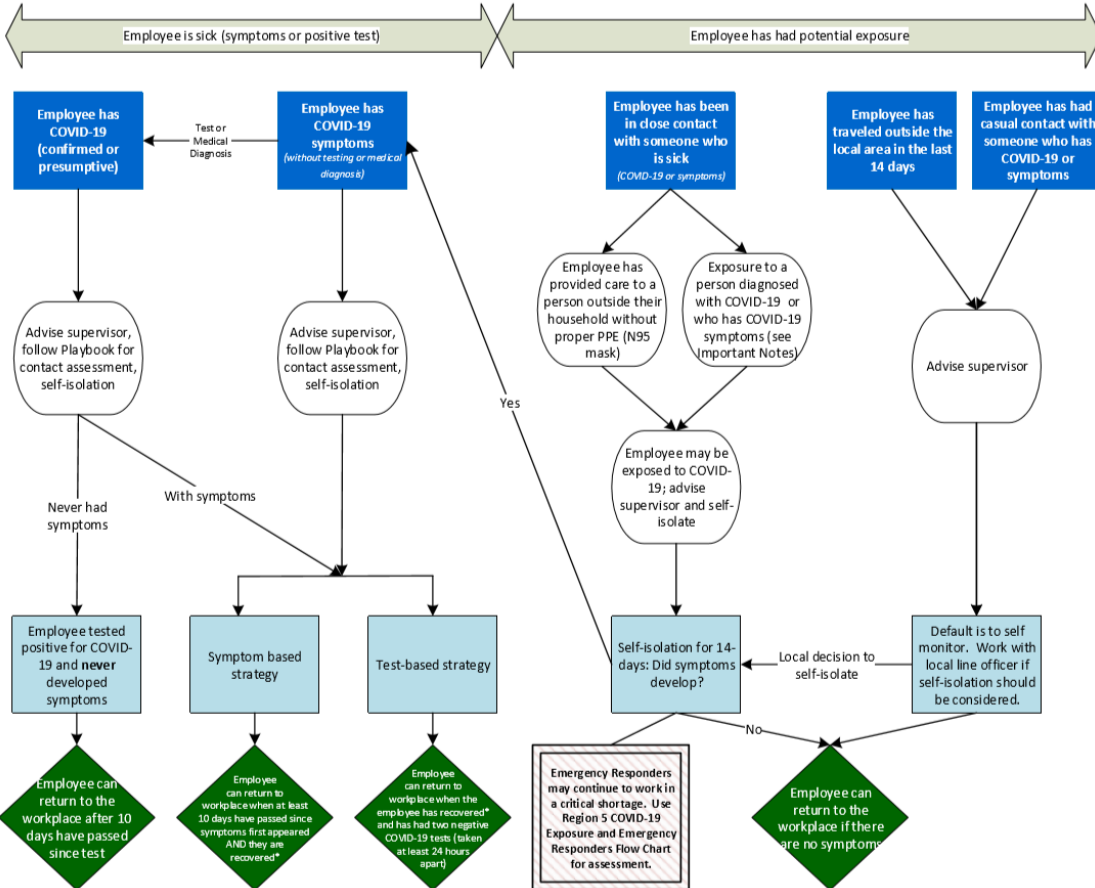
FEDERAL EMPLOYEES SHALL REFER TO REGION 5 — COVID-19 ACTION PROCESS FOR AGENCY SPECIFIC GUIDANCE



Region 5 Pacific Southwest Region COVID-19 Response Action Process

August 20, 2020

COVID-19 Response and Employee Notification



Important Notes:

- * Recovered is defined as 10 days since symptoms first appeared AND 24 hours with no fever without the use of fever-reducing medicines AND other symptoms of COVID-19 are improving.
- Symptoms of COVID-19 include cough, shortness of breath, trouble breathing, fever, chills, repeated shaking with chills, muscle or body aches, headache, sore throat, new loss of taste or smell, congestion or runny nose, nausea or vomiting, or diarrhea.
- Contact Assessment should be conducted to help determine potential exposure of additional employees; conduct assessment for the 2-day period before illness onset or test date of sick employees, whichever came first.
- Close contact is defined as less than 6 feet, for at least 15 minutes with or without face coverings/masks. Casual contact is defined as less than 6 feet for less than 15 minutes or more than 6 feet for more than 15 minutes.
- Any employee in "close contact with someone who is sick" may return to the workplace if the sick person is tested for COVID-19 and the test is negative.
- Contact with exposed individuals is classified as secondary contact and does not typically require self-isolation unless the exposed individual tests positive.
- You do not need to self-isolate unless you meet one of the criteria identified.
- Always follow the advice of a medical provider, if given, including any need for isolation or clearance for return-to-duty.

This document is subject to change based on CDC guidance.

Dolan & Coleman Fires – Safety Message

INCIDENT #CA-LPF-002428

DATE: 10-25-20 TIME: 0700-1930

Firefighter Fatigue/Driver Safety

With continued physically demanding operational periods, expect and predict fatigue of all crew members working in and around your division. Take the following steps to limit and address fatigue and driver safety:

1. Follow work/rest guidelines.
2. Take breaks as needed.
3. Rotate qualified drivers/operators.
4. Supervisors assess the fatigue levels of your crews during operational periods.
5. Ask/tell if you are physically unable to complete a task or assignment.
6. Front seat passengers should remain awake and maintain situational awareness while driving.

Heat Related Illness

Heat Stroke- A condition that occurs when the body becomes unable to control its temperature, and can cause death or permanent disability. Description of signs and symptoms include:

- Confusion, loss of coordination.
- Throbbing headaches.
- High body temperature.
- Seizures, coma.

Heat Exhaustion- The body's response to an excessive loss of water and salt, usually through sweating.

- Heavy sweating, extreme weakness or fatigue.
- Dizziness, nausea, vomiting, irritability.
- Fast, shallow breathing.
- Trouble concentrating, loss in coordination.

Heat Cramps- Affects workers who sweat a lot during strenuous activity. Sweating depletes the body's salt and moisture levels.

- Muscle cramps, pain, or spasms in the abdomen, arms or legs.

Personal Hygiene and Illness Prevention

With shared utilities such as sleeping quarters, restrooms and the chow hall, the chance of spreading illness and infection is a concern. Take the following steps to limit your exposure to illness or infection:

- Use handwashing stations routinely.
- Stay hydrated and well nourished.
- Get your rest, use hand sanitizer.
- Avoid contact with social surfaces (handrails, doorknobs) without washing hands after.
- Follow all CDC and Agency COVID 19 protocols.

Safety Officers: Chris Woods, SOF2(t),
Tom Zuelner, SOF2

Know It Before You Need It




17.TERRAIN AND FUELS MAKE ESCAPE TO SAFETY ZONES DIFFICULT

Eastern Area Silver IMT
Public Information Message

Think Before You Post

Posting work-related content on your personal social media reflects on the professionalism of your crew, your agency, and the wildland firefighting community.

 If you share work-related content, make sure it's already available to the public.

Check those photos.
Unsafe, unprofessional, or embarrassing content reflects poorly on all of us.



 **Always maintain situational awareness on the fireline.**
Firefighters looking at a camera are not looking up, down, and all around - take photos when it's safe.

No compensation for content posted that relates to your job. 

 **Uphold our reputation.**
Always do what's right on the fireline and online.

Remember, everything posted online is PERMANENT.



If you have questions, ask your supervisor or contact public affairs.

Media Inquiries:

Incident Personnel Approached by the media should refer them to the Public Information Officer at: (831) 272-0221

Social Media Policy

Incident personnel are prohibited from posting photographs and videos during operations and from posting information on social media during the incident.

Please be mindful that posting work related information or activities on personal social media accounts or websites reflects on the professionalism of the fire community, sponsoring agencies and those we serve.

It is **encouraged** that incident personnel share incident photos and videos with the **Public Information** shop for use in official incident communications. Be sure to provide your name, home unit and location on the fire when providing photos. The EA IMT wants to be sure individuals receive photo credits when their images or videos are used.

Photos and videos may be mailed to
2020.dolan@firenet.gov

DIRECTIONS FOR FILLING OUT A CTR/SHIFT TICKET AND SUBMITTING THEM ELECTRONICALLY

Financial Information:

Fire Name: Dolan

Fire Number: CA-LPF-002428 / P5NF6M21 (0507)

Financial Information:

Coleman

CA-LPF-003161 / P5NPD921 (0507)

Fire Office Responsible for Fire: Los Padres Nation Forest

Remarks Section of CTR or Shift Ticket: Your phone #, email and Fire Name

Finance Email: 2020.dolan.finance@firenet.gov (We will use this email for both fires)

Finance Documents Needed (If Not Already Submitted):

Overhead: <ul style="list-style-type: none">• Resource Order• AD Hire Form (If an AD)• CTR's	Cooperator: <ul style="list-style-type: none">• Cooperative Agreement• Resource Order• Shift Ticket
---	--

Please send in your CTR or Shift Ticket daily. You can:

1. Send a hard copy of CTR or Shift Ticket
2. Take a picture of signed CTR or Shift ticket and email in
(Please place your O# or E# in the subject line of your email)
3. Use QR code to download a fillable CTR or Shift Ticket and email signed copy in

For Finance assistance please contact:

Mary Coleman at (573) 210-7073

Or (916) 798-3083

QR Codes for:

Finance Email



Finance Check-in



Fillable CTR & Shift Ticket



10/25/2020

Tentative Release

CREWS

C-115	1400	(HC21)	Vandenberg Crew 2
-------	------	--------	-------------------

EQUIPMENT

E-140	0900	(PU & Driver)	Daniel Crowley
E-395	1000	(WTS2)	Water Tender (Support) – T2
E-609	1200	(PU)	Dennis Milliorn

OVERHEAD

O-1297	0730	(FMOD)	C&K
O-1296	0800	(FMOD)	Scholl
O-1215	0830	(RADO)	Staci Harris
O-1272.1	1500	(ICT2)	Steven Goldman

10/26/2020

Tentative Release

EQUIPMENT

E-576	0830	(DOZ3)	DZ3-ENF-T2
E-537	0900	(DOZ2)	Dozer – T2
E-85	1000	(ENG6)	PVT-Rocky Point E-324
E-455	1030	(ENG3)	CA-FHL Engine 8833

10/27/2020

Tentative Release

EQUIPMENT

E-227	0800	(ENG5)	ENG5 – PVT Wildlands Fire
E-572	0830	(DOZ2)	Dozer – T2 – LPF-3
E-499	0900	(ENG4)	Idaho Trailblazers

MEDICAL PLAN (ICS 206 WF)

Controlled Unclassified Information//Basic

Medical Incident Report

FOR A NON-EMERGENCY INCIDENT, WORK THROUGH CHAIN OF COMMAND TO REPORT AND TRANSPORT INJURED PERSONNEL AS NECESSARY.

FOR A MEDICAL EMERGENCY: IDENTIFY ON SCENE INCIDENT COMMANDER BY NAME AND POSITION AND ANNOUNCE "MEDICAL EMERGENCY" TO INITIATE RESPONSE FROM IMT COMMUNICATIONS/DISPATCH.

Use the following items to communicate situation to communications/dispatch.

1. CONTACT COMMUNICATIONS / DISPATCH (**Verify correct frequency prior to starting report**)

Ex: "Communications, Div. Alpha. Stand-by for Emergency Traffic."

2. INCIDENT STATUS: *Provide incident summary (including number of patients) and command structure.*

Ex: "Communications, I have a Red priority patient, unconscious, struck by a falling tree. Requesting air ambulance to Forest Road 1 at (Lat./Long.) This will be the Trout Meadow Medical, IC is TFLD Jones. EMT Smith is providing medical care."

Severity of Emergency / Transport Priority	<input type="checkbox"/> RED / PRIORITY 1 Life or limb threatening injury or illness. Evacuation need is IMMEDIATE <i>Ex: Unconscious, difficulty breathing, bleeding severely, 2° – 3° burns more than 4 palm sizes, heat stroke, disoriented.</i> <input type="checkbox"/> YELLOW / PRIORITY 2 Serious Injury or illness. Evacuation may be DELAYED if necessary. <i>Ex: Significant trauma, unable to walk, 2° – 3° burns not more than 1-3 palm sizes.</i> <input type="checkbox"/> GREEN / PRIORITY 3 Minor Injury or illness. Non-Emergency transport <i>Ex: Sprains, strains, minor heat-related illness.</i>	
Nature of Injury or Illness & Mechanism of Injury		<i>Brief Summary of Injury or Illness (Ex: Unconscious, Struck by Falling Tree)</i>
Transport Request		<i>Air Ambulance / Short Haul/Hoist Ground Ambulance / Other</i>
Patient Location		<i>Descriptive Location & Lat. / Long. (WGS84)</i>
Incident Name		<i>Geographic Name + "Medical" (Ex: Trout Meadow Medical)</i>
On-Scene Incident Commander		<i>Name of on-scene IC of Incident within an Incident (Ex: TFLD Jones)</i>
Patient Care		<i>Name of Care Provider (Ex: EMT Smith)</i>

3. INITIAL PATIENT ASSESSMENT: *Complete this section for each patient as applicable (start with the most severe patient)*

Patient Assessment: See IRPG page 106

Treatment:

4. TRANSPORT PLAN:

Evacuation Location (if different): *(Descriptive Location (drop point, intersection, etc.) or Lat. / Long.)* Patient's ETA to Evacuation Location:

Helispot / Extraction Site Size and Hazards:

5. ADDITIONAL RESOURCES / EQUIPMENT NEEDS:

Example: Paramedic/EMT, Crews, Immobilization Devices, AED, Oxygen, Trauma Bag, IV/Fluid(s), Splints, Rope rescue, Wheeled litter, HAZMAT, Extrication

6. COMMUNICATIONS: Identify State Air/Ground EMS Frequencies and Hospital Contacts as applicable

Function	Channel Name/Number	Receive (RX)	Tone/NAC *	Transmit (TX)	Tone/NAC *
COMMAND					
AIR-TO-GRND					
TACTICAL					

7. CONTINGENCY: **Considerations:** *If primary options fail, what actions can be implemented in conjunction with primary evacuation method? Be thinking ahead.*

8. ADDITIONAL INFORMATION: *Updates/Changes, etc.*

REMEMBER: Confirm ETA's of resources ordered. Act according to your level of training. Be Alert. Keep Calm. Think Clearly. Act Decisively.