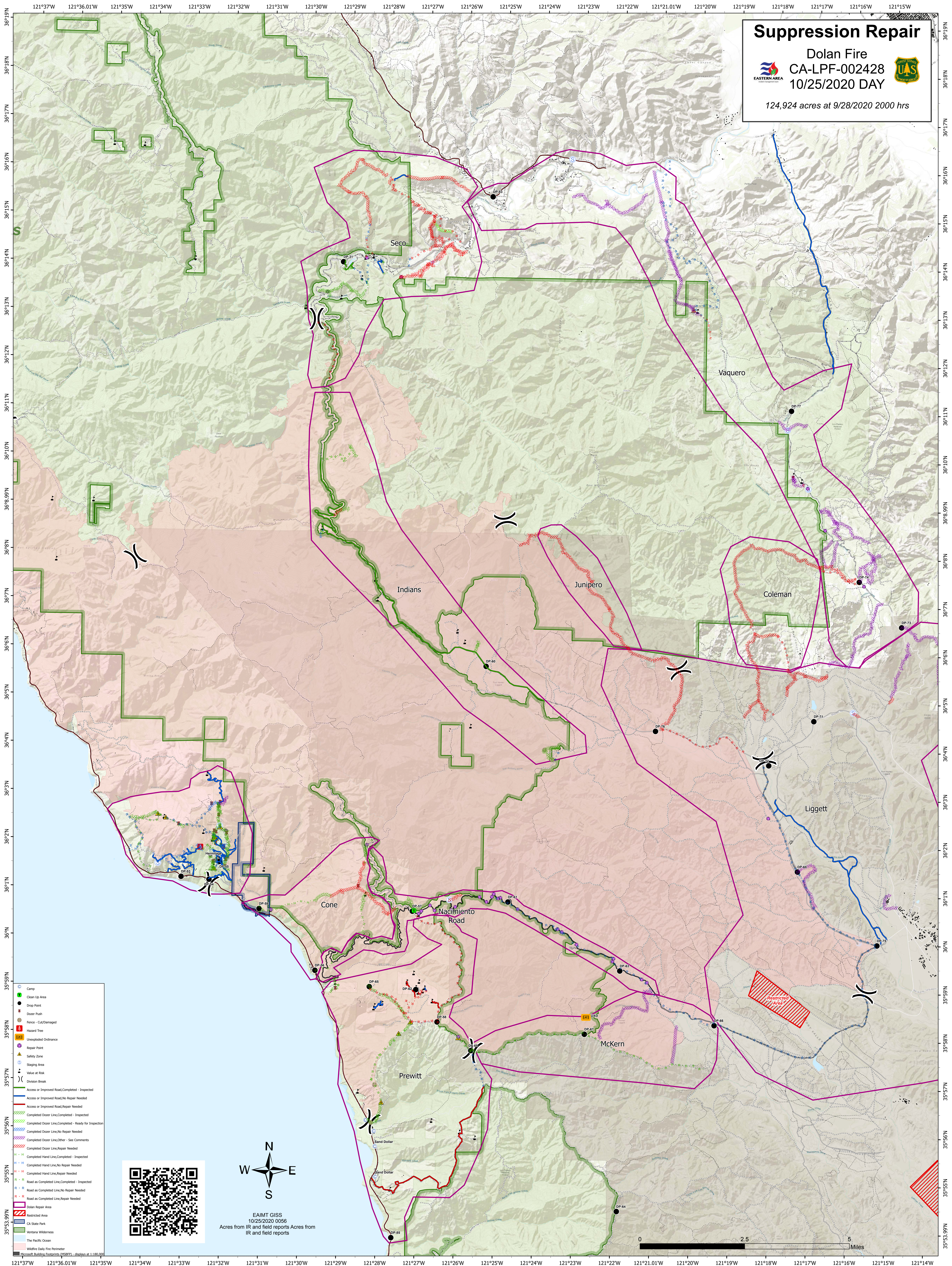


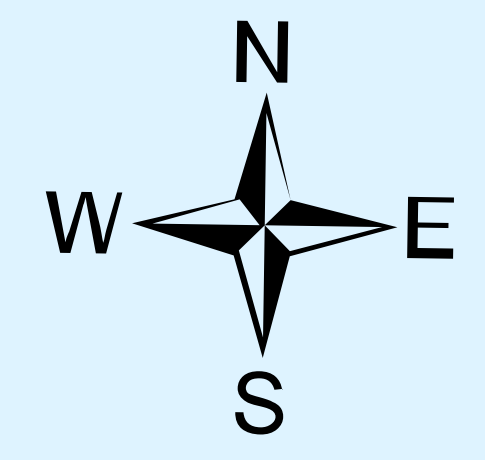
Suppression Repair

Dolan Fire
CA-LPF-002428
10/25/2020 DAY

124,924 acres at 9/28/2020 2000 hrs



- Camp
- Clean Up Area
- Drop Point
- Drozer Push
- Fence - Cut/Damaged
- Hazard Tree
- Unexploded Ordnance
- Repair Point
- Safety Zone
- Staging Area
- Value at Risk
- Division Break
- Access or Improved Road, Completed - Inspected
- Access or Improved Road, No Repair Needed
- Access or Improved Road, Repair Needed
- Completed Dozer Line, Completed - Inspected
- Completed Dozer Line, Completed - Ready for Inspection
- Completed Dozer Line, No Repair Needed
- Completed Dozer Line, Other - See Comments
- Completed Dozer Line, Repair Needed
- Completed Hand Line, Completed - Inspected
- Completed Hand Line, No Repair Needed
- Completed Hand Line, Repair Needed
- R - R Road as Completed Line, Completed - Inspected
- R - R Road as Completed Line, No Repair Needed
- R - R Road as Completed Line, Repair Needed
- Dolan Repair Area
- Restricted Area
- CA State Park
- Verona Wilderness
- The Pacific Ocean
- Wildfire Daily Fire Perimeter
- Microsoft Building Footprints (MSBFP) - display at 1:180,000



EAIMT GISS
10/25/2020 0056
Acres from IR and field reports

0 2.5 5 Miles