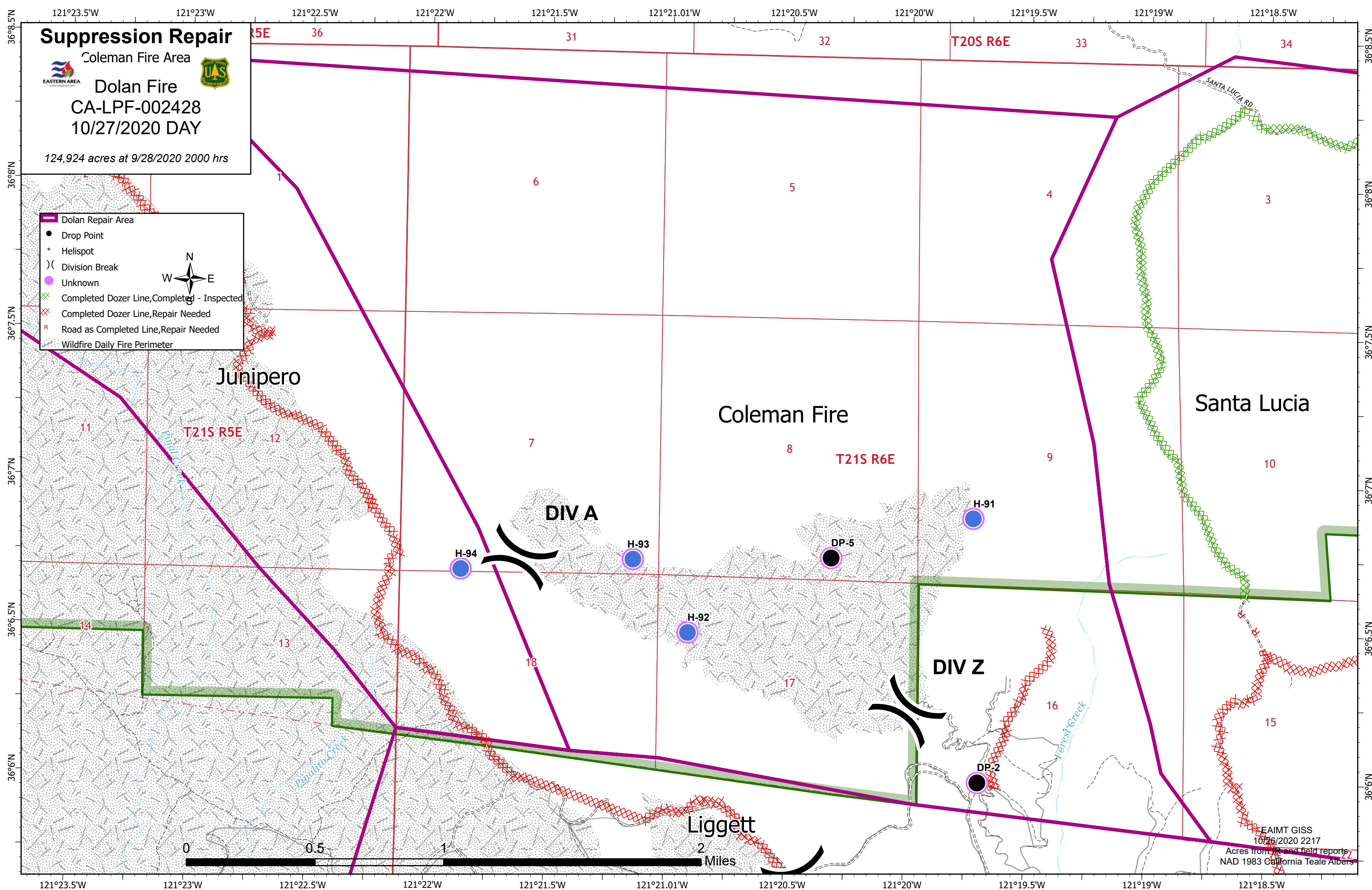


Suppression Repair

Coleman Fire Area
 Dolan Fire
 CA-LPF-002428
 10/27/2020 DAY

124,924 acres at 9/28/2020 2000 hrs

- █ Dolan Repair Area
- Drop Point
- Helispot
-) Division Break
- Unknown
- x Completed Dozer Line, Completed - Inspected
- x Completed Dozer Line, Repair Needed
- R Road as Completed Line, Repair Needed
- Wildfire Daily Fire Perimeter



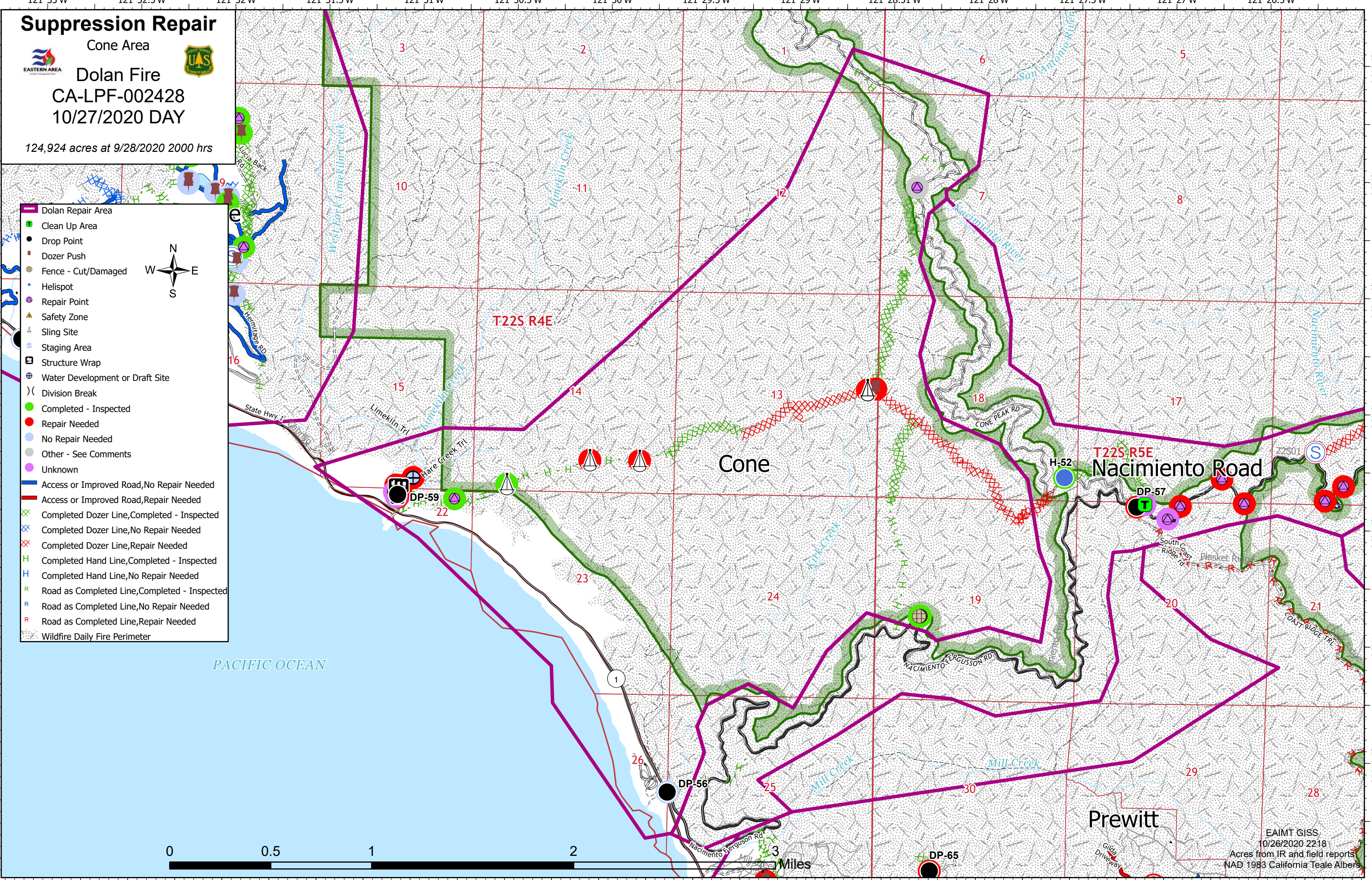
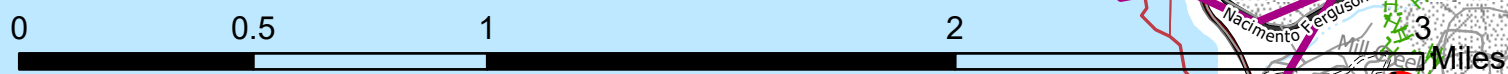
EA/MT GISS
 10/26/2020 2217
 Acres from IR and field reports
 NAD 1983 California Teale Albers

Suppression Repair

Cone Area
Dolan Fire
 CA-LPF-002428
 10/27/2020 DAY

124,924 acres at 9/28/2020 2000 hrs

- ▬ Dolan Repair Area
- Clean Up Area
- Drop Point
- Dozer Push
- Fence - Cut/Damaged
- Helispot
- Repair Point
- ▲ Safety Zone
- ▲ Sling Site
- ⊕ Staging Area
- ⊕ Structure Wrap
- ⊕ Water Development or Draft Site
-) Division Break
- Completed - Inspected
- Repair Needed
- No Repair Needed
- Other - See Comments
- Unknown
- ▬ Access or Improved Road, No Repair Needed
- ▬ Access or Improved Road, Repair Needed
- X Completed Dozer Line, Completed - Inspected
- X Completed Dozer Line, No Repair Needed
- X Completed Dozer Line, Repair Needed
- H Completed Hand Line, Completed - Inspected
- H Completed Hand Line, No Repair Needed
- R Road as Completed Line, Completed - Inspected
- R Road as Completed Line, No Repair Needed
- R Road as Completed Line, Repair Needed
- ▬ Wildfire Daily Fire Perimeter



EAIMT GISS
 10/26/2020 2218
 Acres from IR and field reports
 NAD 1983 California Teale Albers

Suppression Repair

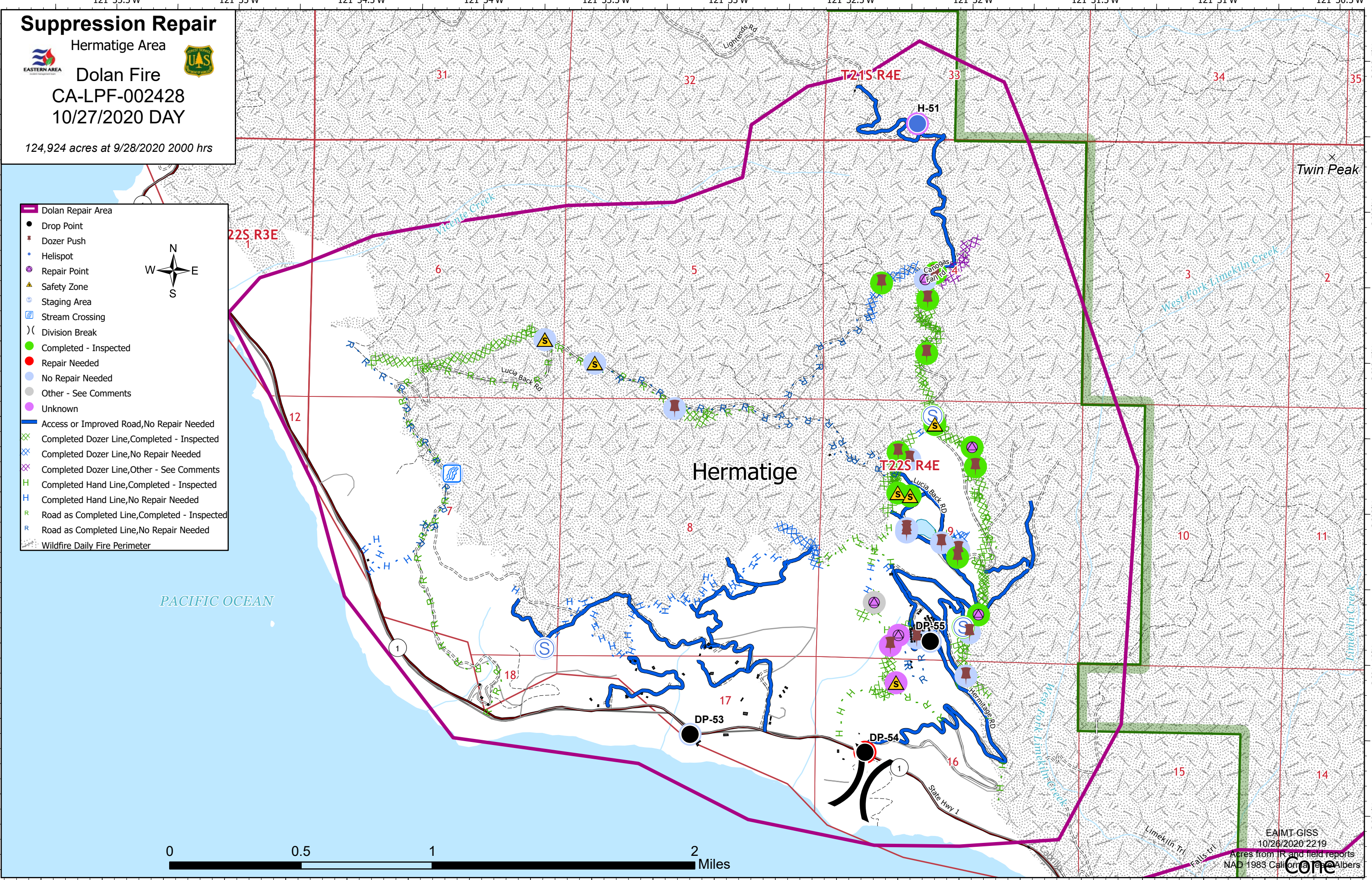
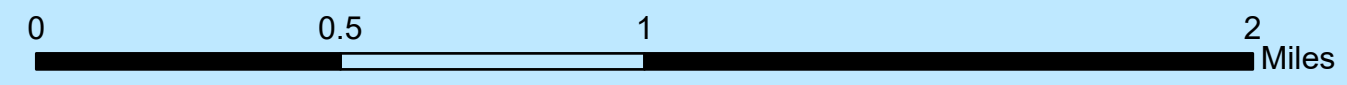
Hermatige Area
Dolan Fire
 CA-LPF-002428
 10/27/2020 DAY

124,924 acres at 9/28/2020 2000 hrs

- Dolan Repair Area
- Drop Point
- Dozer Push
- Helispot
- Repair Point
- ▲ Safety Zone
- Staging Area
- ▢ Stream Crossing
-) Division Break
- Completed - Inspected
- Repair Needed
- No Repair Needed
- Other - See Comments
- Unknown
- Access or Improved Road, No Repair Needed
- X Completed Dozer Line, Completed - Inspected
- X Completed Dozer Line, No Repair Needed
- X Completed Dozer Line, Other - See Comments
- H Completed Hand Line, Completed - Inspected
- H Completed Hand Line, No Repair Needed
- R Road as Completed Line, Completed - Inspected
- R Road as Completed Line, No Repair Needed
- Wildfire Daily Fire Perimeter



PACIFIC OCEAN



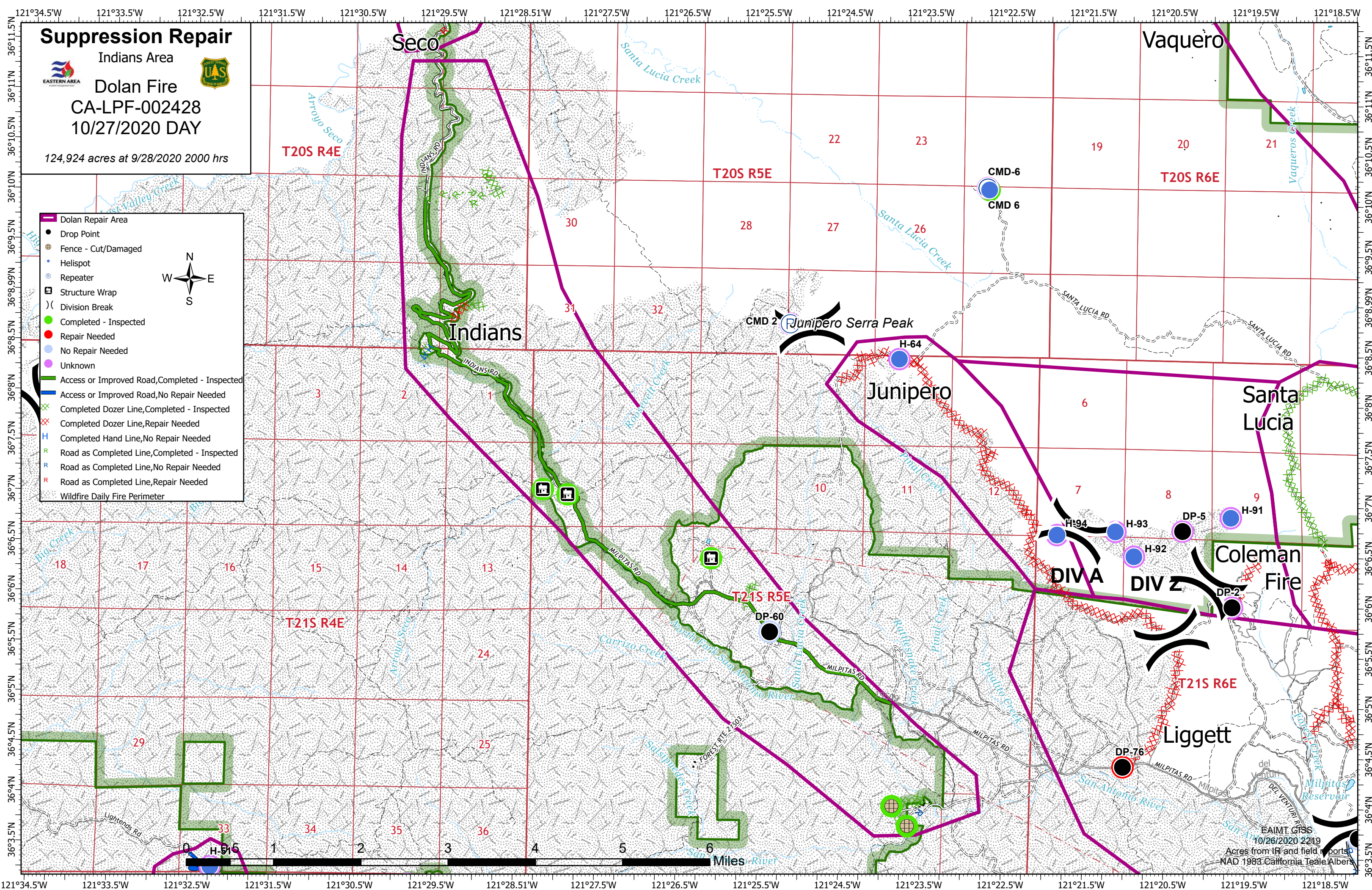
EAMT GISS
 10/26/2020 2219
 Acres from IR and field reports
 NAD 1983 California Albers
 Core

Suppression Repair

Indians Area
Dolan Fire
 CA-LPF-002428
 10/27/2020 DAY

124,924 acres at 9/28/2020 2000 hrs

- █ Dolan Repair Area
- Drop Point
- Fence - Cut/Damaged
- Helispot
- ⊙ Repeater
- ▣ Structure Wrap
-)) Division Break
- █ Completed - Inspected
- █ Repair Needed
- █ No Repair Needed
- █ Unknown
- █ Access or Improved Road, Completed - Inspected
- █ Access or Improved Road, No Repair Needed
- ⊗ Completed Dozer Line, Completed - Inspected
- ⊗ Completed Dozer Line, Repair Needed
- H Completed Hand Line, No Repair Needed
- R Road as Completed Line, Completed - Inspected
- R Road as Completed Line, No Repair Needed
- R Road as Completed Line, Repair Needed
- Wildfire Daily Fire Perimeter



Suppression Repair

Junipero Area



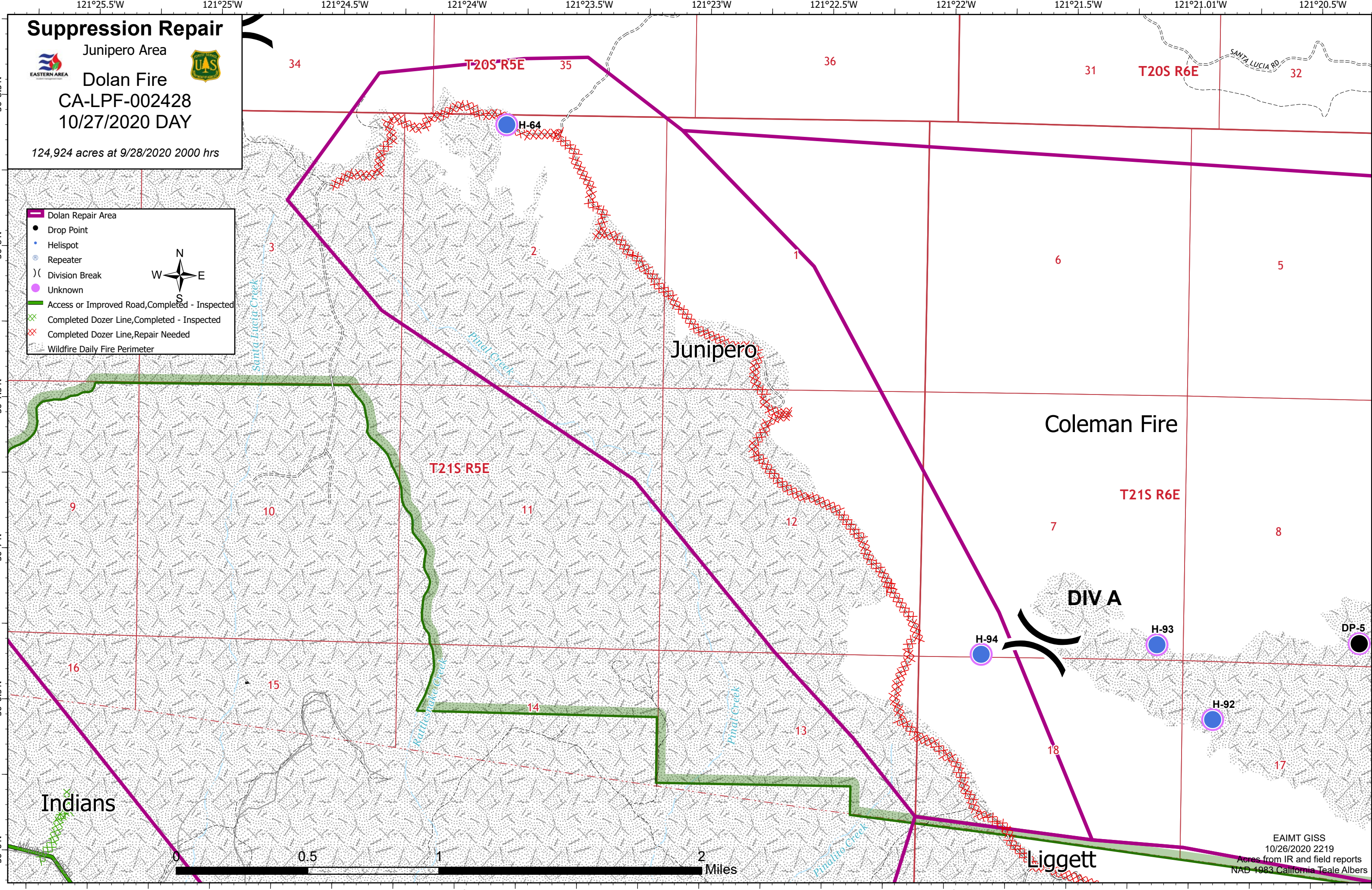
Dolan Fire

CA-LPF-002428

10/27/2020 DAY

124,924 acres at 9/28/2020 2000 hrs

- Dolan Repair Area
- Drop Point
- Helispot
- Repeater
- Division Break
- Unknown
- Access or Improved Road, Completed - Inspected
- Completed Dozer Line, Completed - Inspected
- Completed Dozer Line, Repair Needed
- Wildfire Daily Fire Perimeter



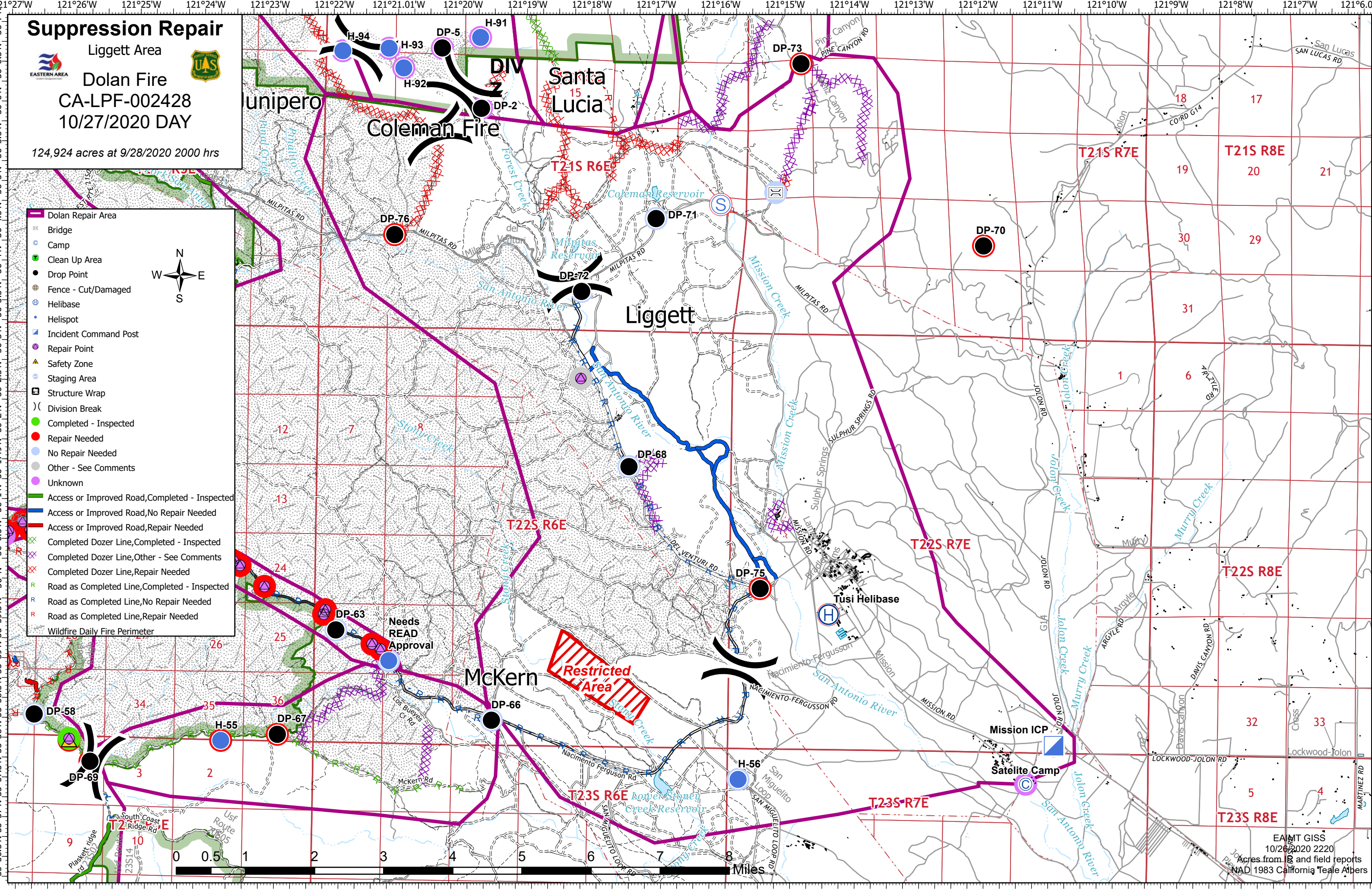
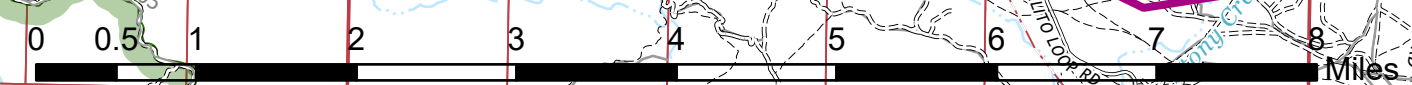
EAIMT GISS
10/26/2020 2219
Acres from IR and field reports
NAD 1983 California Teale Albers

Suppression Repair

Liggett Area
 Dolan Fire
 CA-LPF-002428
 10/27/2020 DAY

124,924 acres at 9/28/2020 2000 hrs

- Dolan Repair Area
- Bridge
- Camp
- Clean Up Area
- Drop Point
- Fence - Cut/Damaged
- Helibase
- Helispot
- Incident Command Post
- Repair Point
- Safety Zone
- Staging Area
- Structure Wrap
- Division Break
- Completed - Inspected
- Repair Needed
- No Repair Needed
- Other - See Comments
- Unknown
- Access or Improved Road, Completed - Inspected
- Access or Improved Road, No Repair Needed
- Access or Improved Road, Repair Needed
- Completed Dozer Line, Completed - Inspected
- Completed Dozer Line, Other - See Comments
- Completed Dozer Line, Repair Needed
- Road as Completed Line, Completed - Inspected
- Road as Completed Line, No Repair Needed
- Road as Completed Line, Repair Needed
- Wildfire Daily Fire Perimeter



Suppression Repair

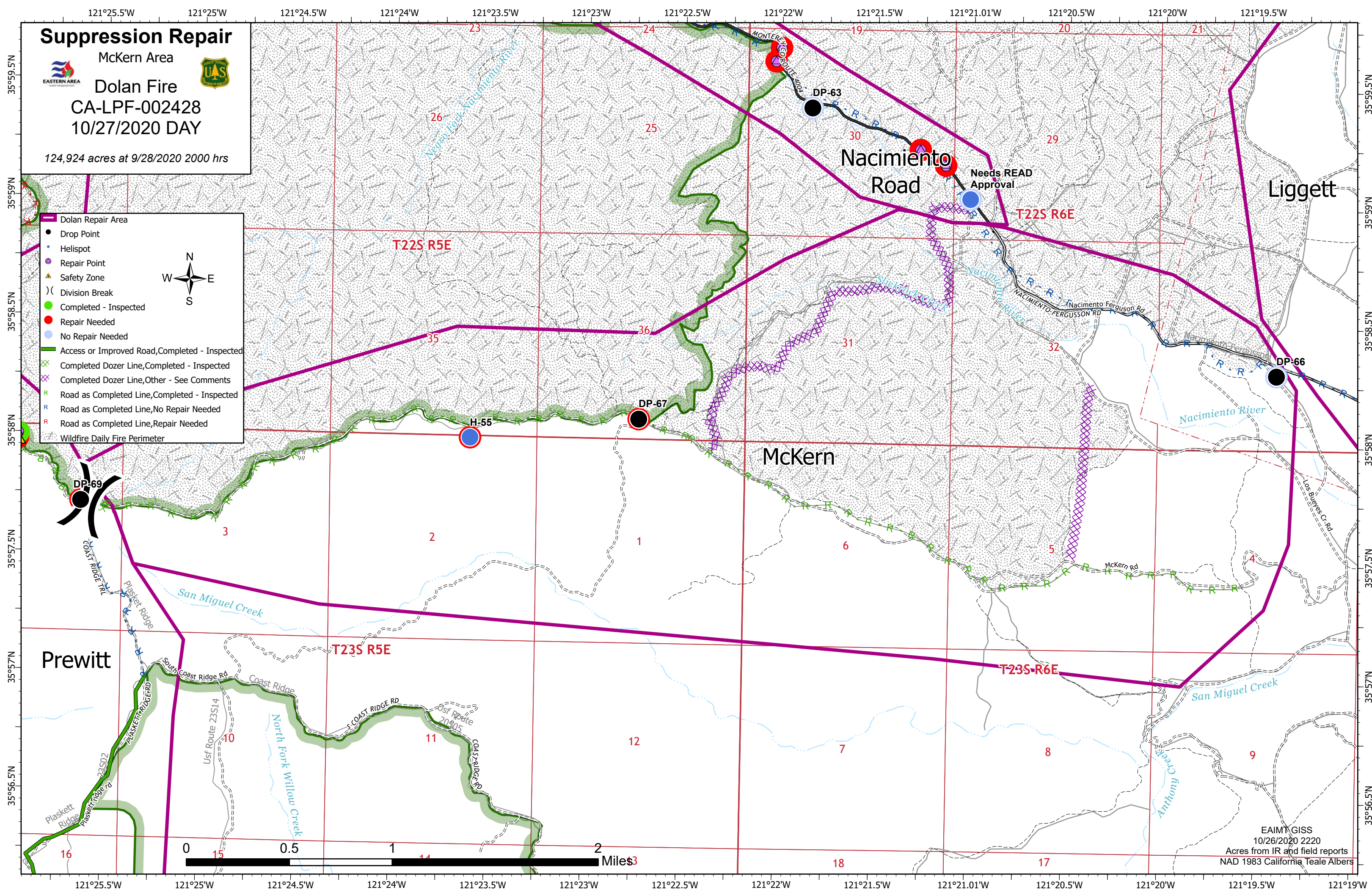
Mckern Area
 Dolan Fire
 CA-LPF-002428
 10/27/2020 DAY

124,924 acres at 9/28/2020 2000 hrs

- ▬ Dolan Repair Area
- Drop Point
- Helispot
- Repair Point
- ▲ Safety Zone
-) Division Break
- ▬ Completed - Inspected
- Repair Needed
- No Repair Needed
- ▬ Access or Improved Road, Completed - Inspected
- ▬ Completed Dozer Line, Completed - Inspected
- ▬ Completed Dozer Line, Other - See Comments
- ▬ Road as Completed Line, Completed - Inspected
- ▬ Road as Completed Line, No Repair Needed
- ▬ Road as Completed Line, Repair Needed
- ▬ Wildfire Daily Fire Perimeter



EAIMT GISS
 10/26/2020 2220
 Acres from IR and field reports
 NAD 1983 California Teale Albers



Suppression Repair

Nacimiento Road

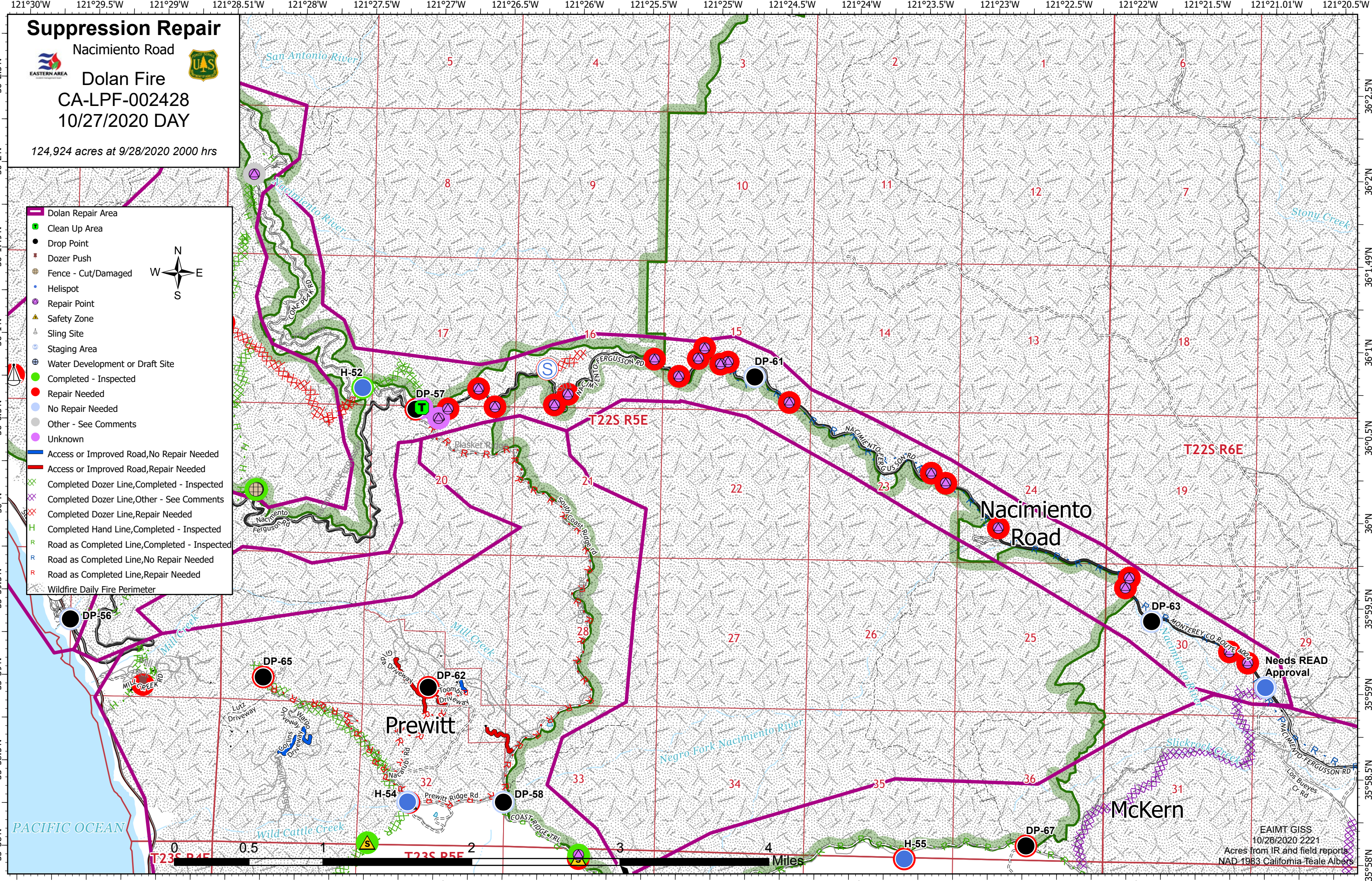
Dolan Fire

CA-LPF-002428

10/27/2020 DAY

124,924 acres at 9/28/2020 2000 hrs

- Dolan Repair Area
- Clean Up Area
- Drop Point
- Dozer Push
- Fence - Cut/Damaged
- Helispot
- Repair Point
- Safety Zone
- Sling Site
- Staging Area
- Water Development or Draft Site
- Completed - Inspected
- Repair Needed
- No Repair Needed
- Other - See Comments
- Unknown
- Access or Improved Road, No Repair Needed
- Access or Improved Road, Repair Needed
- Completed Dozer Line, Completed - Inspected
- Completed Dozer Line, Other - See Comments
- Completed Dozer Line, Repair Needed
- Completed Hand Line, Completed - Inspected
- Road as Completed Line, Completed - Inspected
- Road as Completed Line, No Repair Needed
- Road as Completed Line, Repair Needed
- Wildfire Daily Fire Perimeter



PACIFIC OCEAN

0 0.5 1 2 3 4 Miles

EAIMT GISS
10/26/2020 2221
Acres from IR and field reports
NAD 1983 California Teale Albers

Suppression Repair

Partington Area

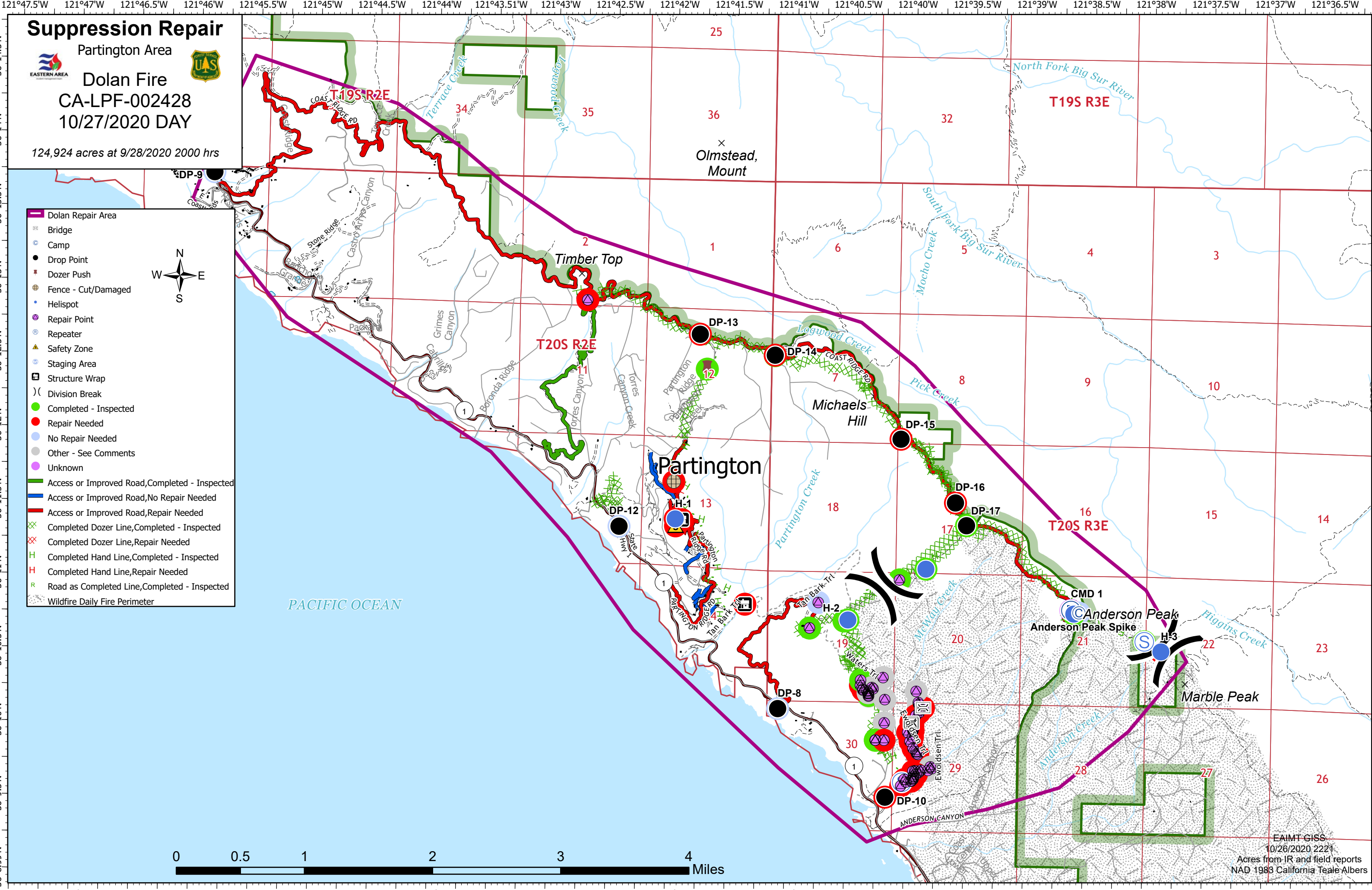
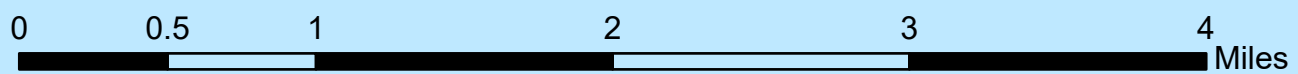
Dolan Fire

CA-LPF-002428

10/27/2020 DAY

124,924 acres at 9/28/2020 2000 hrs

- Dolan Repair Area
- Bridge
- Camp
- Drop Point
- Dozer Push
- Fence - Cut/Damaged
- Helispot
- Repair Point
- Repeater
- Safety Zone
- Staging Area
- Structure Wrap
- Division Break
- Completed - Inspected
- Repair Needed
- No Repair Needed
- Other - See Comments
- Unknown
- Access or Improved Road, Completed - Inspected
- Access or Improved Road, No Repair Needed
- Access or Improved Road, Repair Needed
- Completed Dozer Line, Completed - Inspected
- Completed Dozer Line, Repair Needed
- Completed Hand Line, Completed - Inspected
- Completed Hand Line, Repair Needed
- Road as Completed Line, Completed - Inspected
- Wildfire Daily Fire Perimeter



EAIMT GISS
10/26/2020 2221
Acres from IR and field reports
NAD 1983 California Teale Albers

Suppression Repair

Prewitt Area

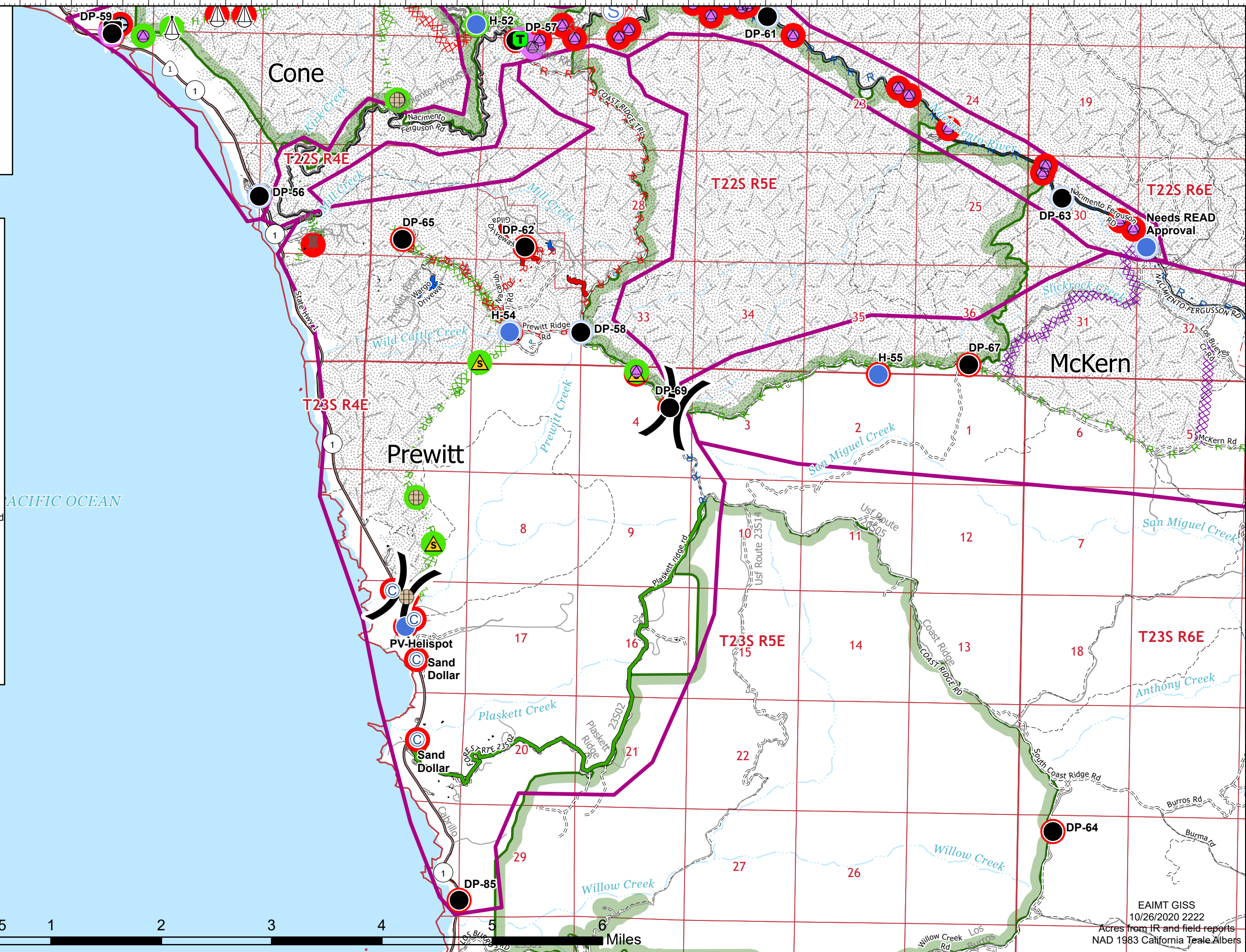
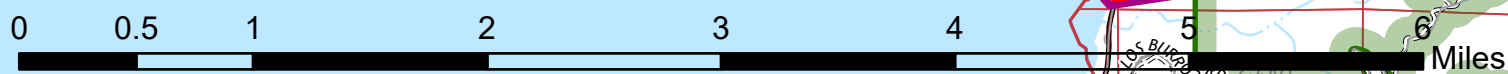
Dolan Fire

CA-LPF-002428

10/27/2020 DAY

124,924 acres at 9/28/2020 2000 hrs

- Dolan Repair Area
- Camp
- Clean Up Area
- Drop Point
- Dozer Push
- Fence - Cut/Damaged
- Helispot
- Repair Point
- Safety Zone
- Sling Site
- Staging Area
- Structure Wrap
- Water Development or Draft Site
- Division Break
- Completed - Inspected
- Repair Needed
- No Repair Needed
- Unknown
- Access or Improved Road, Completed - Inspected
- Access or Improved Road, No Repair Needed
- Access or Improved Road, Repair Needed
- Completed Dozer Line, Completed - Inspected
- Completed Dozer Line, Other - See Comments
- Completed Dozer Line, Repair Needed
- Completed Hand Line, Completed - Inspected
- Road as Completed Line, Completed - Inspected
- Road as Completed Line, No Repair Needed
- Road as Completed Line, Repair Needed
- Wildfire Daily Fire Perimeter



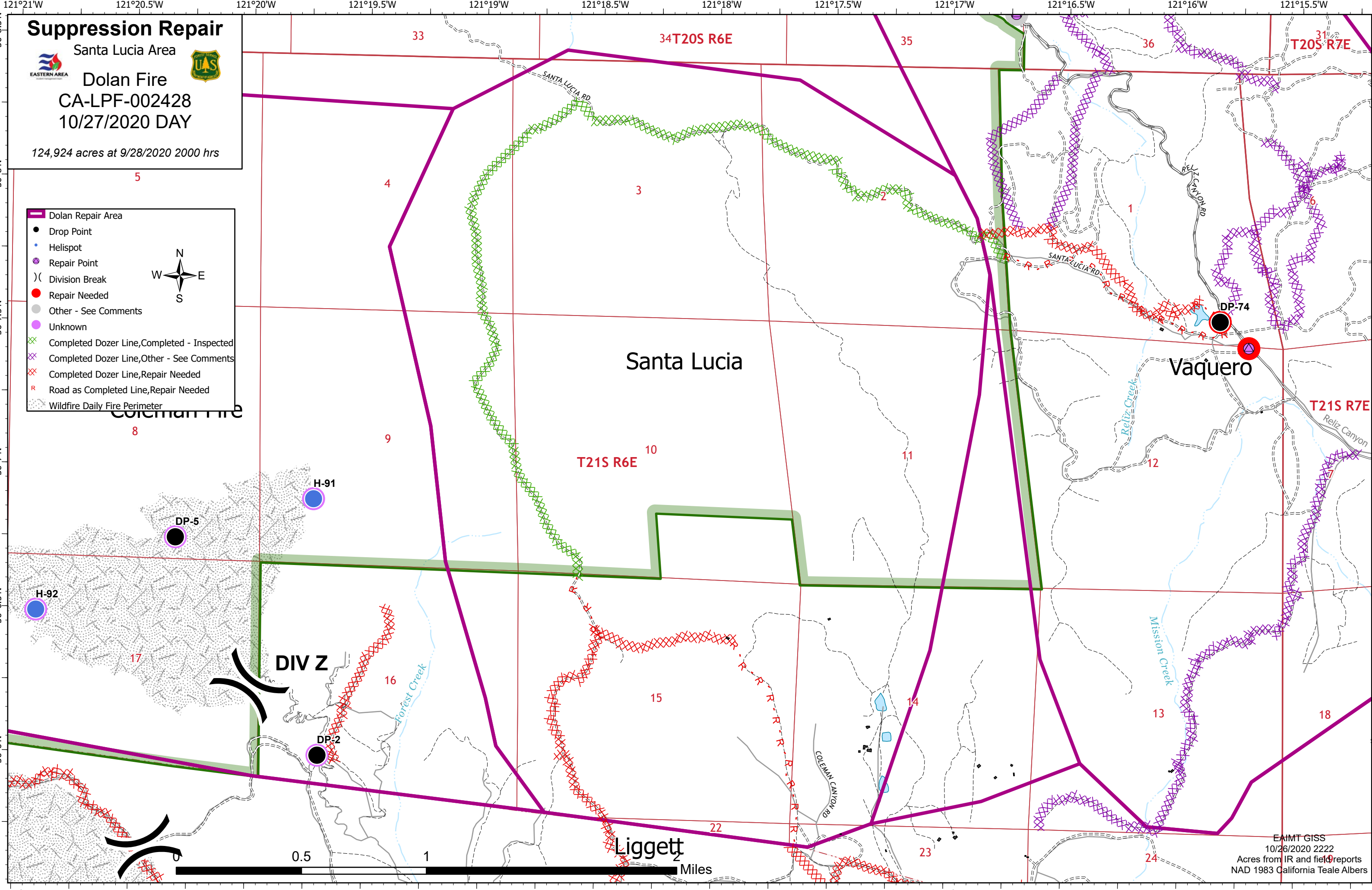
EAIMT GISS
10/26/2020 2222
Acres from IR and field reports
NAD 1983 California Teale Albers

Suppression Repair

Santa Lucia Area
Dolan Fire
 CA-LPF-002428
 10/27/2020 DAY

124,924 acres at 9/28/2020 2000 hrs

- █ Dolan Repair Area
- Drop Point
- Helispot
- Repair Point
-) Division Break
- Repair Needed
- Other - See Comments
- Unknown
- x Completed Dozer Line, Completed - Inspected
- x Completed Dozer Line, Other - See Comments
- x Completed Dozer Line, Repair Needed
- R Road as Completed Line, Repair Needed
- x Wildfire Daily Fire Perimeter



Suppression Repair

Seco Area



Dolan Fire

CA-LPF-002428

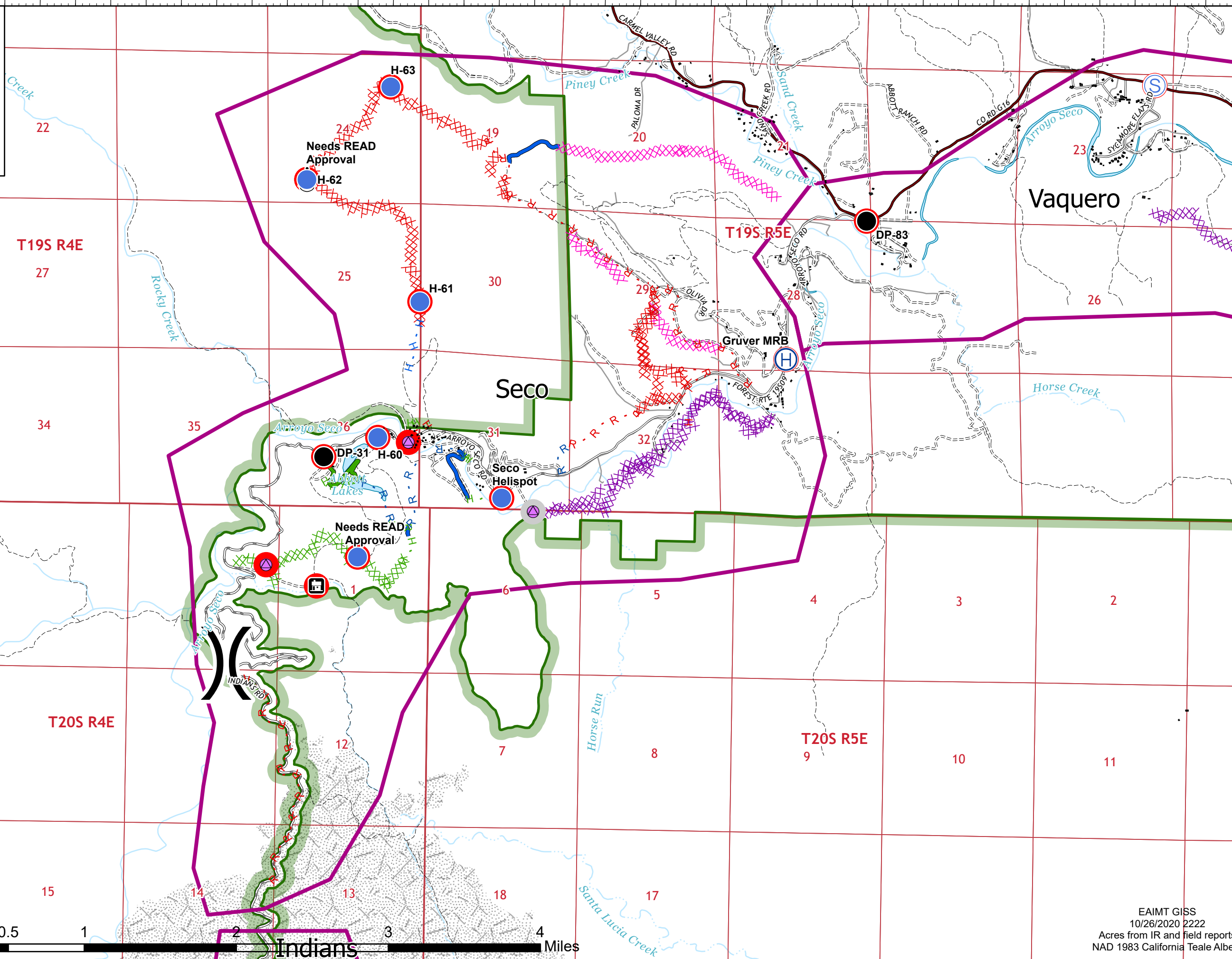

10/27/2020 DAY



124,924 acres at 9/28/2020 2000 hrs

Legend

- Dolan Repair Area
- Drop Point
- Helibase
- Helispot
- Repair Point
- Sling Site
- Staging Area
- Structure Wrap
- Division Break
- Repair Needed
- Other - See Comments
- Access or Improved Road, Completed - Inspected
- Access or Improved Road, No Repair Needed
- Completed Dozer Line, Completed - Inspected
- Completed Dozer Line, Completed - Ready for Inspection
- Completed Dozer Line, Other - See Comments
- Completed Dozer Line, Repair Needed
- Completed Hand Line, Completed - Inspected
- Completed Hand Line, No Repair Needed
- Completed Hand Line, Repair Needed
- Road as Completed Line, Completed - Inspected
- Road as Completed Line, No Repair Needed
- Road as Completed Line, Repair Needed
- Wildfire Daily Fire Perimeter



Suppression Repair

Vaquero Area

Dolan Fire

CA-LPF-002428

10/27/2020 DAY

124,924 acres at 9/28/2020 2000 hrs

- Dolan Repair Area
- Bridge
- Drop Point
- Helibase
- Helispot
- Repair Point
- Repeater
- Safety Zone
- Sling Site
- Staging Area
- Structure Wrap
- Division Break
- Completed - Inspected
- Repair Needed
- No Repair Needed
- Other - See Comments
- Unknown
- Access or Improved Road, Completed - Inspected
- Access or Improved Road, No Repair Needed
- Completed Dozer Line, Completed - Inspected
- Completed Dozer Line, Completed - Ready for Inspection
- Completed Dozer Line, Other - See Comments
- Completed Dozer Line, Repair Needed
- Completed Hand Line, Completed - Inspected
- Completed Hand Line, No Repair Needed
- Completed Hand Line, Repair Needed
- Road as Completed Line, Completed - Inspected
- Road as Completed Line, No Repair Needed
- Road as Completed Line, Repair Needed
- Wildfire Daily Fire Perimeter

