

# INCIDENT ACTION PLAN

# DOLAN AND COLEMAN FIRES

CA-LPF-002428 and CA-LPF-003161



**Incident Information**  
**2020.dolan@firenet.gov**  
**831-244-3762**

**PHONE BRIEFING FOR SPIKED AND REMOTE RESOURCES**  
**CALL 888-844-9904 - ENTER PASSCODE 4808672#**



Coleman IAP & Maps



**Wednesday**  
**10/28/2020**  
**0700 - 1900**



Dolan IAP & Maps

WiFi Hotspot available near briefing area: Verizon-MiFi8800L-96B8 Password: 7e9c12b6

## INCIDENT OBJECTIVES (ICS 202)

|  |                               |  |  |
|--|-------------------------------|--|--|
| <b>1. Incident Name:</b><br>Dolan and Coleman Fires  | <b>2. Operational Period:</b> | Date From: 10/28/2020<br>Time From: 0700   | Date To: 10/28/2020<br>Time To: 1900   |
| <b>3. Objective(s):</b>  |                               |  |  |
| <b><u>LEADERS INTENT</u></b>   |                               |  |  |
| Continue a full suppression strategy on the Dolan and Coleman Fires. Values at risk include human safety, private property, National Scenic Byway (Highway 1), Fort Hunter Liggett improvements, and wilderness values. Apply tactics that offer the highest probability of success. Identify, develop and prepare contingency measures in a proactive fashion. Develop and maintain an accurate and timely information sharing process for high values at risk. |                               |  |  |
| <b><u>MANAGEMENT OBJECTIVES</u></b>  |                               |  |  |
| Provide for firefighter and public safety through hazard recognition and risk management.  |                               |  |  |
| Minimize risk and limit exposure by following COVID-19 best management practices.  |                               |  |  |
| Minimize or avoid impacts to wilderness values by applying minimum impact suppression tactics (MIST).  |                               |  |  |
| Utilize incident resource advisors to minimize impacts on natural and cultural resources.  |                               |  |  |
| Distribute accurate and timely fire information to cooperators, the public, and stakeholders.  |                               |  |  |
| Manage resources to meet protection objectives while maintaining fiscal accountability.  |                               |  |  |
| <b><u>CONTROL OBJECTIVES</u></b>   |                               |  |  |
| Minimize risk to private property, surrounding communities, and resource values by:  |                               |  |  |
| Maintaining the Dolan Fire within existing perimeter.  |                               |  |  |
| Provide for suppression repair where most advantageous with existing resources.  |                               |  |  |
| Utilize technology to manage risks to infrastructure, values at risk to guide aggressive mop up, control and suppression repair tactics.   |                               |  |  |
| Conduct direct attack on the Coleman Fire when possible focusing on the north, south, and east flanks to protect values at risk. Construct indirect fireline if direct attack is not feasible.   |                               |  |  |
| <b>5. Site Safety Plan Required?</b> Yes <input type="checkbox"/> No <input checked="" type="checkbox"/>   |                               |  |  |
| <b>Approved Site Safety Plan(s) Located at:</b>  |                               |  |  |
| <b>6. Incident Action Plan</b>   |                               |  |  |
| ✓ ICS 203  | ✓ ICS 206                     | ✓ DEMOB Message  |  |
| ✓ WX   | ✓ COVID-19                    | ✓ ICS 214  |  |
| ✓ ICS 204  | ✓ ICS 208                     | ✓ MIR 8 LINE   |  |
| ✓ ICS 220  | ✓ Finance Message             |  |  |
| ✓ ICS 205  | PIO Message                   |  |  |
| <b>7. Prepared By:</b>   | Glenn Palmgren                | Position/Title: PSC2 (t)   | Signature:  |
| <b>8. Approved by Incident Commander:</b>  | Lucas Minton                  | Signature:  |  |
| ICS 202  |                               |  |  |

## Fire Weather Forecast

FORECAST NO: 62

NAME OF FIRE: Dolan/Coleman CA-LPF-2428/3161

PREDICTION FOR: DAYSHIFT

UNIT: Los Padres National Forest

SHIFT DATE: 28 Oct 2020

SIGNED: 

TIME AND DATE

FORECAST ISSUED: 1900 / 27 October

Incident Meteorologist

**WEATHER DISCUSSION:** Warmer than normal afternoon highs with continued very dry conditions are a result of a now stagnant pattern of high pressure overhead. Little wind is expected during the coming week, as the high will keep storms away from central California.

### **WEATHER FORECAST:**

**WEATHER:** Sunny.

**TEMPERATURE:** Coast high 69 to 75. Inland high 76 to 82.

**HUMIDITY:** Coast minimum 31 to 39 percent, occurring during mid-day. Inland minimum 8 to 14 percent.

### **20 FT WIND:**

**COAST** – Northeast 1 to 5 mph gusts to 8 mph, by 1300 becoming northwest 1 to 5 mph gusts to 8 mph.

**INLAND** – North to northeast 1 to 4 mph, by 1300 becoming north 2 to 7 mph gusts to 12 mph.

**HAINES INDEX:** 5 Moderate.

**LIGHTNING ACTIVITY LEVEL:** 1.

**STABILITY/INVERSION:** Inversion top at 2700ft elevation, rising to 5600ft elevation by 1400.

**OUTLOOK FOR TONIGHT:** Clear. Low temperature: Coast 46 to 52. Inland 41 to 49.

Maximum humidity: Below inversion 45 to 53 percent. Above inversion 23 to 31 percent. Coast wind north 1 to 4 mph, by 2200 becoming northeast 1 to 5 mph. Inland wind north 2 to 7 mph gust to 10 mph, by 0100 becoming northeast 1 to 4 mph. Inversion top developing at 3500ft elevation.

**OUTLOOK FOR THURSDAY:** Sunny. High temperature: Coast 69 to 75. Inland 76 to 84.

Minimum humidity: Coast 41 to 47 percent, occurring in the mid-day hours. Inland percent 12 to 18 percent. Coast wind northeast to east 1 to 4 mph, by 1300 becoming west to northwest 2 to 6 mph gusts to 10 mph. Inland wind northeast 1 to 4 mph, by 1400 becoming north 1 to 5 mph gusts to 8 mph.

**EXTENDED FORECAST:** **Thu night/Fri:** Clear/Sunny. Low 42 to 52. High 71 to 81. Higher afternoon humidity. Afternoon inland wind northwest 2 to 8 mph gusts to 14 mph. **Fri night/Sat:** Clear/Sunny. Low 42 to 52. High 74 to 84. Lower afternoon humidity. Afternoon inland wind north 2 to 7 mph gusts to 12 mph. **Sat night/Sun:** Clear/Sunny. Low 42 to 52. High 77 to 87. Even lower afternoon humidity. Afternoon inland wind northwest 2 to 8 mph gusts to 14 mph.

### **OBSERVATIONS:**

| Location/Elevation:            | Low Temp: | High Temp: | Max. RH | Min. RH | Rainfall |
|--------------------------------|-----------|------------|---------|---------|----------|
| South Coast Ridge IRAWS/3250ft | 52        | 70         | 25%     | 8%      | 0.00     |
| Fort H-L RAWWS/1116ft          | 35        | 77         | 50%     | 9%      | 0.00     |
| Los Padres PRAWWS/997ft        | 31        | 78         | 59%     | 8%      | 0.00     |
| Arroyo Seco RAWWS/879ft        | 45        | 78         | 34%     | 8%      | 0.00     |

## ORGANIZATION ASSIGNMENT LIST (ICS 203)

|   |                                      |  |                                   |  |  |
|---|--------------------------------------|--|-----------------------------------|--|--|
| <b>1. Incident Name:</b><br>Dolan and Coleman Fires |                                      | <b>2. Operational Period: Date From:</b> 10/28/2020<br>Time From: 0700 |                                   | <b>Date To:</b> 10/28/2020<br><b>Time To:</b> 1900 |  |
| <b>3. Incident Commander(s) and Command Staff:</b>  |                                      |  | <b>7. Operation Section:</b>      |  |  |
| IC/UC   | Lucas Minton, Tomas Gonzalez         | Field Ops  | Joe Alyea                         |  |  |
|   | Larry "Mark" Alvarado (t)            | Planning Ops   | Keith Murphy, Steve Cameron       |  |  |
| Safety Officer                                      | Chris Woods, Tom Zeulner             |  |                                   |  |  |
| Information Officer                                 | Micah Bell, Jacob Welsh              |  |                                   |  |  |
| Liaison Officer                                     | Roger Goldman                        |  |                                   |  |  |
| <b>4. Agency/Organization Representatives:</b>      |                                      | <b>Branch</b>  |                                   |  |  |
| Agency/Organization                                 | Name                                 | Division/Group   | Suppression Repair                | Rice, Fiore, Shields(t), Johnson(t), Richwine(t)   |  |
| Los Padres AA                                       | Tim Short                            | Division/Group   | Supp Repair North                 | R. Webster (TFLD)                                  |  |
| Los Padres AREP                                     | Chad Kirschbaum                      | Division/Group   | Coleman                           | M. Brown, G. Laird(t)                              |  |
| Los Padres AREP & COVID Advisor                     | Charles "CJ" Woodard                 | Division/Group   | Staging                           |  |  |
| Big Sur Fire Dep.                                   | Matt Harris                          |  |                                   |  |  |
| Fort Hunter Liggett                                 | Jeff Manetti                         |  |                                   |  |  |
| Monterey Sheriff                                    | Ray Tongol                           |  |                                   |  |  |
| CHP   | M. Oita, John Yerace                 |  |                                   |  |  |
| CA State Parks                                      | Matthew Khalar                       |  |                                   |  |  |
| PG&E  | Geoff Money                          |  |                                   |  |  |
|   |                                      |  |                                   |  |  |
|   |                                      |  |                                   |  |  |
|   |                                      |  |                                   |  |  |
| <b>5. Planning Section:</b>                         |                                      | <b>Branch</b>  |                                   |  |  |
| Chief   | Glenn Palmgren (t)                   |  |                                   |  |  |
| Resource Unit/Demob                                 | Dave Lemmien                         |  |                                   |  |  |
| Situation Unit                                      | Ben Garrett (t)                      |  |                                   |  |  |
| Documentation Unit                                  |                                      |  |                                   |  |  |
| GISS  | Matt Judd, Brian Houseman (t)        |  |                                   |  |  |
| FBAN  |                                      |  |                                   |  |  |
| IMET  | Jack Messick                         | <b>Air Operations Branch</b>   |                                   |  |  |
| Training Specialist                                 |                                      | Air Operations Branch Director   |                                   |  |  |
| ITSS  | Bill Whitacre, Brian Lynch (t)       | Air Support Group Supervisor   |                                   |  |  |
| Lead READ   | Kevin Keeler                         | Tusi Helibase Manager  |                                   | John Kaisersatt                                    |  |
| <b>6. Logistics Section</b>                         |                                      | <b>8. Finance/Administration Section:</b>                              |                                   |  |  |
| Chief   | Robert Feldtz, Tim Oland (t)         | Chief  | Peter Beringer, Deb Niles (t)     |  |  |
| Supply Unit   | Michael Beeman                       | Time Unit  | Mary Coleman, Valarie Sanchez (t) |  |  |
| Ordering Manager                                    | C. Adamcik, P. Dutrey, J. Perez (t)  | Comp/Claims Unit   |                                   |  |  |
| Receiving/Distribution                              | Lance Weinbrenner, Patrick Aceves(t) | Cost Unit  |                                   |  |  |
| Facilities Unit                                     | Dave Avery                           | Personnel Time   | Rosemary Johnson                  |  |  |
| Base Camp Manager                                   | Brian Bellew, Cassie Buckley (t)     | Equipment Time   | Zach Palmer, Rhenea Ortega (t)    |  |  |
| Ground Support Unit                                 | Joseph Badaracco                     |  |                                   |  |  |
| Communications Unit                                 | Peter Willis                         |  |                                   |  |  |
| Medical Unit  | Mike Passarelli, Jim Emerson         |  |                                   |  |  |
| Food Unit   | Tim Murdoch                          |  |                                   |  |  |
| <b>Prepared By: Name:</b>                           | Glenn Palmgren                       | <b>Position/Title:</b>   | PSC2 (t)                          | <b>Signature:</b> /s/ Glenn R. Palmgren            |  |
| <b>ICS 203</b>                                      |                                      | <b>Date/Time:</b>  | 10/27/2020 2000                   |  |  |

# ASSIGNMENT LIST (ICS 204 WF)

CONTROLLED UNCLASSIFIED INFORMATION/BASIC

|  |   |   |
|--|---|---|
| <b>1. Incident Name:</b><br><b>Dolan and Coleman Fires</b> | <b>2. Operational Period:</b><br>Date From: 10/28/2020 Date To: 10/28/2020<br>Time From: 0700 Time To: 1900 | <b>3. Branch</b> <b>Division</b><br><br><b>Suppression Repair</b> |
|--|---|---|

Page 1 of 1

|  |  |
|--|--|
| <b>4. Operations Personnel:</b><br>Field Ops Section Chief: <b>Joe Alyea</b><br>Branch Director:<br>Division/Group Supervisor: <b>Rice, Fiore, Shields(t), Johnson(t), Richwine(t)</b> | Planning Ops: <b>Keith Murphy, Steve Cameron</b><br>Safety Officer: <b>Chris Woods, Tom Zeulner</b><br>Air Attack: |
|--|--|

**5. Resources Assigned:                      \*\*\*Resources in BOLD are identified as IA resources\*\*\***

| Resource Identifier  | ALS | LWD          | Leader                 | Personnel | Request #    | Hours            | Report To             | Return To             |
|----------------------|-----|--------------|------------------------|-----------|--------------|------------------|-----------------------|-----------------------|
| HC2 DESCANSO CREW 5  |     | 10/28        | TINKER, LUKE           | 21        | C C-4        | 0700-1900        | Mission ICP           | Mission ICP           |
| FMOD Tree Guys       |     | 11/5         | PADILLA, JOE           | 2         | C O-54       | 0700-1900        | Mission ICP           | Mission ICP           |
| <b>ENG3 LPF E18</b>  |     | <b>10/29</b> | <b>LOW, CHRIS</b>      | <b>5</b>  | <b>E-538</b> | <b>0700-1900</b> | <b>Pacific Valley</b> | <b>Pacific Valley</b> |
| <b>ENG7 LPF E17</b>  |     | <b>10/29</b> | <b>DELGADO, ELAINE</b> | <b>2</b>  | <b>E-542</b> | <b>0700-1900</b> | <b>Pacific Valley</b> | <b>Pacific Valley</b> |
| WTS1 DUST BUSTERS    |     | 11/5         | KENNEDY, DEVON         | 1         | E-615        | 0700-1900        | Mission ICP           | Mission ICP           |
| WTS1 A1              |     | 10/29        | ELEVATORSKI, DALE      | 2         | E-599        | 0700-1900        | Mission ICP           | Mission ICP           |
| WTT2 CA-CNF          |     | 11/5         | ODORICO, NORMAN        | 2         | C E-22       | 0700-1900        | Mission ICP           | Mission ICP           |
| WTS3 KMT             |     | 11/6         | MERTENS, DANIEL        | 1         | E-598        | 0700-1900        | Mission ICP           | Mission ICP           |
| EXCA T2 YLU0172      |     | 10/28        | PARKER, KACY           | 2         | E-568        | 0700-1900        | Mission ICP           | Mission ICP           |
| EXCA T3 5157         |     | 10/28        | PARKER, KYLE           | 2         | E-580        | 0700-1900        | Mission ICP           | Mission ICP           |
| EXCA T2              |     | 10/31        | HAYDEN, COLTON         | 1         | E-578        | 0700-1900        | Mission ICP           | Mission ICP           |
| EXCA T2              |     | 10/30        | KRUCKEBERG, JAMES      | 1         | E-579        | 0700-1900        | Mission ICP           | Mission ICP           |
| GRD VMS CONSTRUCTION |     | 11/9         | MUZYAK, VIC            | 1         | E-616        | 0700-1900        | Mission ICP           | Mission ICP           |
| TFLD RYAN            |     | 11/2         | RYAN, JOHN             | 1         | C O-60       | 0700-1900        | Mission ICP           | Mission ICP           |
| STEQ(t) DEAN         |     | 10/31        | DEAN, STEVEN           | 1         | O-1236       | 0700-1900        | Mission ICP           | Mission ICP           |
| HEQB COLEMAN         |     | 10/30        | COLEMAN, ALANI         | 1         | O-1238       | 0700-1900        | Mission ICP           | Mission ICP           |
| ARCH RAY             |     | 10/29        | RAY, MOLLY             | 1         | O-1216       | 0700-1900        | Mission ICP           | Mission ICP           |
| REAF HEARD           |     | 11/9         | HEARD, CHARLES         | 1         | O-1214       | 0700-1900        | Mission ICP           | Mission ICP           |
| AMBU SLO1 4X4        | X   | 11/5         | WEIS, TREVOR           | 2         | C E-16       | 0700-1900        | Mission ICP           | Mission ICP           |
| EMPF O'GORMAN        | X   | 11/6         | GREG O'GORMAN          | 1         | O-1234       | 0700-1900        | Mission ICP           | Mission ICP           |

**6. Work Assignments:**

TASK: Restore roads, dozer lines and drainage systems. Reduce visual impacts of the fire lines. Monitor the fire's edge.  
 PURPOSE: Minimize potential for erosion and sediment delivery to water courses.  
 END STATE: To restore firelines and transportation routes back to prefire conditions as reasonably possible.  
 RISK ASSESSMENT: Stay alert for drivers in the fire area and in restricted areas. Watch for snags and rollout onto roads and working around heavy equipment.

**7. Special Instructions:**

- All medical resources MUST check in with Los Padres Dispatch and Division Supervisor once in place.
- READs and the BAER Team will check in and out with Division.
- Assume all divisions have Sudden Oak Death Pathogen and clean and disinfect everything. No weed wash is available use a commercial wash station where sump collection is done to prevent the further spread.
- For Mop up and Patrol – Do not go off the road (UXO).
- Utilize Collector to mark all accountable property (pumps, hose, tanks...), attach a picture of the serial number with the LAT and LONG.
- Use call outs when traveling on Nacimiento Ferguson Road.
- INITIAL ATTACK RESOURCES will maintain a state of readiness for response. All responses will be initiated by Los Padres Dispatch. Resources will notify their DIVS if they are dispatched. Once the resource is cancelled/released they will return to the incident and notify comms that they are back in their division.

**8. Communications**

| Name     | Ch | Function     | Rx Freq  | Rx Tone | Tx Freq  | Tx Tone | Notes                            |
|----------|----|--------------|----------|---------|----------|---------|----------------------------------|
| LPF AN4  | 1  | COMMAND      | 171.5500 | CSQ     | 164.1500 | 136.5   | LPF ADMIN NET ALDER PK T4        |
| LPF AN6  | 2  | COMMAND      | 171.5500 | CSQ     | 164.1500 | 156.7   | LPF ADMIN NET PIEDRAS BLANCAS T6 |
| LPF AN8  | 3  | COMMAND      | 171.5500 | CSQ     | 164.1500 | 103.5   | LPF ADMIN NET CONE PK T8         |
| LPF AN10 | 4  | COMMAND      | 171.5500 | CSQ     | 164.1500 | 107.2   | LPF ADMIN NET CHEWS RIDGE T10    |
| LPF AN13 | 5  | COMMAND      | 171.5500 | CSQ     | 164.1500 | 141.3   | LPF ADMIN NET ANDERSON T13       |
| LPF AN15 | 6  | COMMAND      | 171.5500 | CSQ     | 164.1500 | 162.2   | LPF ADMIN NET CALANDRA T15       |
| A/G TAC  | 7  | A/G TACTICAL | 163.1500 | CSQ     | 163.1500 | CSQ     | AIR TO GROUND TAC DOLAN FIRE     |
| A/G CMD  | 8  | A/G COMMAND  | 167.5500 | CSQ     | 167.5500 | CSQ     | AIR TO GROUND CMD DOLAN FIRE     |
| LPF TAC4 | 9  | TACTICAL     | 163.7125 | CSQ     | 163.7125 | CSQ     | LPF TACTICAL DOLAN FIRE          |
| FOR NET8 | 13 | COMMAND      | 170.4625 | CSQ     | 164.9125 | 103.5   | IA ONLY COMMAND                  |
| LPF TAC3 | 14 | TACTICAL     | 168.2625 | CSQ     | 168.2625 | CSQ     | IA ONLY TACTICAL                 |
| CALCORD  | 15 | MEDEVAC A/G  | 156.0750 | 156.7   | 156.0750 | 156.7   | MEDICAL EVAC EMERGENCIES ONLY    |
| AIRGUARD | 16 | AIRGUARD     | 168.6250 | CSQ     | 168.6250 | 110.9   | EMERGENCIES ONLY                 |

**9. Prepared by: Name:**                      Glenn Palmgren                      PSC2 (t)                      Signature:   /s/ Glenn R. Palmgren  

**ICS 204**                      Date/Time: 10/27/2020                      2000                      Personnel Count:                      51

# ASSIGNMENT LIST (ICS 204 WF)

CONTROLLED UNCLASSIFIED INFORMATION//BASIC

|                                 |  |                          |                 |
|---------------------------------|--|--------------------------|-----------------|
| <b>1. Incident Name:</b>        | <b>2. Operational Period:</b>  | <b>3. Branch</b>         | <b>Division</b> |
| <b>Dolan and Coleman Fires</b>  | Date From: 10/28/2020    Date To: 10/28/2020<br>Time From: 0700                  Time To: 1900 | <b>Supp Repair North</b> |                 |
| <b>4. Operations Personnel:</b> |  |                          | Page 1 of 1     |

|   |  |
|---|--|
| Field Ops Section Chief: <b>Joe Alyea</b>           | Planning Ops: <b>Keith Murphy, Steve Cameron</b> |
| Branch Director:                                    | Safety Officer: Chris Woods, Tom Zeulner         |
| Division/Group Supervisor: <b>R. Webster (TFLD)</b> | Air Attack:                                      |

**5. Resources Assigned:                      \*\*\*Resources in BOLD are identified as IA resources\*\*\***

| Resource Identifier | ALS | LWD   | Leader           | Personnel | Request # | Hours     | Report To   | Return To   |
|---------------------|-----|-------|------------------|-----------|-----------|-----------|-------------|-------------|
| HC2 SUNDOWNERS      |     | 11/4  | HIOTT, PAUL      | 18        | C-128     | 0700-1900 | Mission ICP | Mission ICP |
| DOZ2 ALGERINE WEST  |     | 10/28 | MONTE, WEST      | 2         | E-569     | 0700-1900 | Mission ICP | Mission ICP |
| EXCA T1 BDRM        |     | 10/29 | PAINTER, STEVE   | 1         | E-590     | 0700-1900 | Mission ICP | Mission ICP |
| EXCA T2 BLACK RANGE |     | 10/29 | PEARSON, TIMOTHY | 2         | E-548     | 0700-1900 | Mission ICP | Mission ICP |
|                     |     |       |                  |           |           |           |             |             |
| AMBU AMR-2          | X   |       |                  | 2         | E-239     | 0700-1900 | Mission ICP | Mission ICP |
| EMPF BLINCOE        | X   | 11/5  | BLINCOE, JIM     | 1         | O-1233    | 0700-1900 | Mission ICP | Mission ICP |
|                     |     |       |                  |           |           |           |             |             |
|                     |     |       |                  |           |           |           |             |             |
|                     |     |       |                  |           |           |           |             |             |
|                     |     |       |                  |           |           |           |             |             |
|                     |     |       |                  |           |           |           |             |             |
|                     |     |       |                  |           |           |           |             |             |
|                     |     |       |                  |           |           |           |             |             |
|                     |     |       |                  |           |           |           |             |             |
|                     |     |       |                  |           |           |           |             |             |
|                     |     |       |                  |           |           |           |             |             |
|                     |     |       |                  |           |           |           |             |             |
|                     |     |       |                  |           |           |           |             |             |
|                     |     |       |                  |           |           |           |             |             |
|                     |     |       |                  |           |           |           |             |             |
|                     |     |       |                  |           |           |           |             |             |
|                     |     |       |                  |           |           |           |             |             |
|                     |     |       |                  |           |           |           |             |             |

**6. Work Assignments:**

TASK: Restore dozer and hand lines. Reduce visual impacts of the fire lines.  
 PURPOSE: Minimize potential for erosion and sediment delivery to water courses.  
 END STATE: To restore firelines back to prefire conditions as reasonably possible.  
 RISK ASSESSMENT: Stay alert for drivers in the fire area and in restricted areas. Watch for snags and rollout onto roads and working around heavy equipment.

**7. Special Instructions:**

- All medical resources MUST check in with Los Padres Dispatch and Division Supervisor once in place.
- READs and the BAER Team will check in and out with Division.
- Assume all divisions have Sudden Oak Death Pathogen and clean and disinfect everything. No weed wash is available use a commercial wash station where sump collection is done to prevent the further spread.
- For Mop up and Patrol – Do not go off the road (UXO).
- Utilize Collector to mark all accountable property (pumps, hose, tanks...), attach a picture of the serial number with the LAT and LONG.
- Use call outs when traveling on Nacimiento Ferguson Road.
- INITIAL ATTACK RESOURCES will maintain a state of readiness for response. All responses will be initiated by Los Padres Dispatch. Resources will notify their DIVS if they are dispatched. Once the resource is cancelled/released they will return to the incident and notify comms that they are back in their division.

**8. Communications**

| Name     | Ch | Function     | Rx Freq  | Rx Tone | Tx Freq  | Tx Tone | Notes                            |
|----------|----|--------------|----------|---------|----------|---------|----------------------------------|
| LPF AN4  | 1  | COMMAND      | 171.5500 | CSQ     | 164.1500 | 136.5   | LPF ADMIN NET ALDER PK T4        |
| LPF AN6  | 2  | COMMAND      | 171.5500 | CSQ     | 164.1500 | 156.7   | LPF ADMIN NET PIEDRAS BLANCAS T6 |
| LPF AN8  | 3  | COMMAND      | 171.5500 | CSQ     | 164.1500 | 103.5   | LPF ADMIN NET CONE PK T8         |
| LPF AN10 | 4  | COMMAND      | 171.5500 | CSQ     | 164.1500 | 107.2   | LPF ADMIN NET CHEWS RIDGE T10    |
| LPF AN13 | 5  | COMMAND      | 171.5500 | CSQ     | 164.1500 | 141.3   | LPF ADMIN NET ANDERSON T13       |
| LPF AN15 | 6  | COMMAND      | 171.5500 | CSQ     | 164.1500 | 162.2   | LPF ADMIN NET CALANDRA T15       |
| A/G TAC  | 7  | A/G TACTICAL | 163.1500 | CSQ     | 163.1500 | CSQ     | AIR TO GROUND TAC DOLAN FIRE     |
| A/G CMD  | 8  | A/G COMMAND  | 167.5500 | CSQ     | 167.5500 | CSQ     | AIR TO GROUND CMD DOLAN FIRE     |
| LPF TAC4 | 9  | TACTICAL     | 163.7125 | CSQ     | 163.7125 | CSQ     | LPF TACTICAL DOLAN FIRE          |
| FOR NET8 | 13 | COMMAND      | 170.4625 | CSQ     | 164.9125 | 103.5   | IA ONLY COMMAND                  |
| LPF TAC3 | 14 | TACTICAL     | 168.2625 | CSQ     | 168.2625 | CSQ     | IA ONLY TACTICAL                 |
| CALCORD  | 15 | MEDEVAC A/G  | 156.0750 | 156.7   | 156.0750 | 156.7   | MEDICAL EVAC EMERGENCIES ONLY    |
| AIRGUARD | 16 | AIRGUARD     | 168.6250 | CSQ     | 168.6250 | 110.9   | EMERGENCIES ONLY                 |

**9. Prepared by: Name:** Glenn Palmgren                      PSC2 (t)                      Signature: /s/ Glenn R. Palmgren

# ASSIGNMENT LIST (ICS 204 WF)

CONTROLLED UNCLASSIFIED INFORMATION//BASIC

|  |   |   |
|--|---|---|
| <b>1. Incident Name:</b><br><b>Dolan and Coleman Fires</b> | <b>2. Operational Period:</b><br>Date From: 10/28/2020 Date To: 10/28/2020<br>Time From: 0700 Time To: 1900 | <b>3. Branch</b><br><b>Division</b><br><b>Coleman</b> |
|--|---|---|

|   |  |                    |
|---|--|--------------------|
| <b>4. Operations Personnel:</b>                         |  | <b>Page 1 of 1</b> |
| Field Ops Section Chief: <b>Joe Alyea</b>               | Planning Ops: <b>Keith Murphy, Steve Cameron</b> |                    |
| Branch Director:  | Safety Officer: <b>Chris Woods, Tom Zeulner</b>  |                    |
| Division/Group Supervisor: <b>M. Brown, G. Laird(t)</b> | Air Attack:                                      |                    |

**5. Resources Assigned:** \*\*\*Resources in BOLD are identified as IA resources\*\*\*

| Resource Identifier           | ALS | LWD          | Leader              | Personnel | Request #      | Hours            | Report to            | Return to            |
|-------------------------------|-----|--------------|---------------------|-----------|----------------|------------------|----------------------|----------------------|
| <b>ARROYO GRANDE FL CW IA</b> |     | <b>10/31</b> | <b>LARSON, SETH</b> | <b>10</b> | <b>A-171</b>   | <b>0700-1900</b> | <b>Tusi Helibase</b> | <b>Tusi Helibase</b> |
| HC2 PACIFIC OASIS             |     | 10/28        | MAZA, JASON         | 20        | D C-123        | 0700-1900        | Mission ICP          | Mission ICP          |
| HC2 SANTA LUCIA               |     | 11/5         | GUZMAN, MATTHEW     | 16        | C-12           | 0700-1900        | Mission ICP          | Mission ICP          |
| WFM2 SLATE MOUNTAIN           |     | 11/4         | REYES, ANGEL        | 10        | O-86           | 0700-1900        | Mission ICP          | Mission ICP          |
| <b>ENG3 CA-FHL E8833</b>      |     | <b>11/8</b>  | <b>FRYER, GREG</b>  | <b>5</b>  | <b>D E-455</b> | <b>0700-1900</b> | <b>Mission ICP</b>   | <b>Mission ICP</b>   |
| DOZ2 FHL 8894                 |     | 10/29        | ROSA, RON           | 1         | D E-583        | 0700-1900        | Mission ICP          | Ft Hunter Liggett    |
| HEQB DAUGHERTY (FHL)          |     | 10/29        | DAUGHERTY, KEVIN    | 1         | D O-1240       | 0700-1900        | Mission ICP          | Ft Hunter Liggett    |
| SOFR(t) MARTINEZ              |     | 11/9         | MARTINEZ, ABELARDO  | 1         | O-94           | 0700-1900        | Mission ICP          | Mission ICP          |
| REMS 1                        | X   | 11/8         | NOGLE, ERIK         | 4         | O-8            | 0700-1900        | Mission ICP          | Mission ICP          |
| AMBU ATASCADERO 4X4           | X   | 11/3         | LAYTON, COLETTE     | 2         | E-14           | 0700-1900        | Mission ICP          | Mission ICP          |
| EMPF O'GORMAN                 | X   | 11/6         | GREG O'GORMAN       | 1         | D O-1234       | 0700-1900        | Mission ICP          | Mission ICP          |
| EMPF DOLL                     | X   | 11/5         | DOLL, KENNY         | 1         | O-10           | 0700-1900        | Mission ICP          | Mission ICP          |
| EMPF(t) HARDIN                | X   | 11/5         | HARDIN, GARRETT     | 1         | O-88           | 0700-1900        | Mission ICP          | Mission ICP          |

**6. Work Assignments:**

TASK: Mop up and patrol the Coleman Fire's containment line.  
 PURPOSE: Eliminate any heat that poses a threat to the line.  
 END STATE: Secure line so fire can be placed into patrol status.  
 RISK ASSESSMENT: Remove only heat that is a threat.

**7. Special Instructions:**

- All medical resources MUST check in with Los Padres Dispatch and Division Supervisor once in place.
- READs and the BAER Team will check in and out with Division.
- Assume all divisions have Sudden Oak Death Pathogen and clean and disinfect everything. No weed wash is available use a commercial wash station where sump collection is done to prevent the further spread.
- For Mop up and Patrol – Do not go off the road (UXO).
- Utilize Collector to mark all accountable property (pumps, hose, tanks...), attach a picture of the serial number with the LAT and LONG.
- INITIAL ATTACK RESOURCES will maintain a state of readiness for response. All responses will be initiated by Los Padres Dispatch. Resources will notify their DIVS if they are dispatched. Once the resource is cancelled/released they will return to the incident and notify comms that they are back in their division.

**8. Communications**

| Name     | Ch | Function    | Rx Freq  | Rx Tone | Tx Freq  | Tx Tone | Notes                            |
|----------|----|-------------|----------|---------|----------|---------|----------------------------------|
| LPF AN4  | 1  | COMMAND     | 171.5500 | CSQ     | 164.1500 | 136.5   | LPF ADMIN NET ALDER PK T4        |
| LPF AN6  | 2  | COMMAND     | 171.5500 | CSQ     | 164.1500 | 156.7   | LPF ADMIN NET PIEDRAS BLANCAS T6 |
| LPF AN8  | 3  | COMMAND     | 171.5500 | CSQ     | 164.1500 | 103.5   | LPF ADMIN NET CONE PK T8         |
| LPF AN10 | 4  | COMMAND     | 171.5500 | CSQ     | 164.1500 | 107.2   | LPF ADMIN NET CHEWS RIDGE T10    |
| LPF AN13 | 5  | COMMAND     | 171.5500 | CSQ     | 164.1500 | 141.3   | LPF ADMIN NET ANDERSON T13       |
| LPF AN15 | 6  | COMMAND     | 171.5500 | CSQ     | 164.1500 | 162.2   | LPF ADMIN NET CALANDRA T15       |
| NIFC T2  | 10 | TACTICAL    | 168.2000 | CSQ     | 168.2000 | CSQ     | NIFC T2 - COLEMAN FIRE DIV A     |
| NIFC T3  | 11 | TACTICAL    | 168.6000 | CSQ     | 168.6000 | CSQ     | NIFC T3 - COLEMAN FIRE DIV Z     |
| COLE A/G | 12 | A/G         | 169.2000 | CSQ     | 169.2000 | CSQ     | AIR TO GROUND COLEMAN FIRE       |
| FOR NET8 | 13 | COMMAND     | 170.4625 | CSQ     | 164.9125 | 103.5   | IA ONLY COMMAND                  |
| LPF TAC3 | 14 | TACTICAL    | 168.2625 | CSQ     | 168.2625 | CSQ     | IA ONLY TACTICAL                 |
| CALCORD  | 15 | MEDEVAC A/G | 156.0750 | 156.7   | 156.0750 | 156.7   | MEDICAL EVAC EMERGENCIES ONLY    |
| AIRGUARD | 16 | AIRGUARD    | 168.6250 | CSQ     | 168.6250 | 110.9   | EMERGENCIES ONLY                 |

**9. Prepared by: Name:** Glenn Palmgren PSC2 (t) Signature: /s/ Glenn R. Palmgren





## AIR OPERATIONS SUMMARY (ICS 220)

|  |   |  |   |
|--|---|--|---|
| <b>1. Incident Name:</b><br>Coleman  | <b>2. Operational Period:</b><br>Date From: 10/28/20<br>Time From: 07:00<br>Date To: 10/29/20<br>Time To: 21:00 | <b>3. Sunrise:</b><br>07:24<br><b>Sunset:</b><br>18:12   |   |
| <b>4. Remarks</b> (safety notes, hazards, air operations special equipment, etc.):<br>All GPS data to be collected in DEGREES, DECIMAL MINUTES format<br>Hoist A/C: CHP H70 Paso Robles<br>SBC H308 Santa Ynez NVG/ALS<br>H406 BEU Bear Valley Day Hoist/BLS<br>*****Utilize CALCCORD Freq. for hoist ops***** |   | <b>5. Ready Alert Aircraft:</b><br>Medivac: Mercy Air 20 FHL<br>New Incident: H527   |   |
| <b>7. Personnel:</b>   |   | <b>6. Temporary Flight Restriction Number:</b><br>Altitude: 7000 feet MSL TFR 0/4604<br>Center Point: 36°06'28"N 121°21'01"W |   |
| Name:  | Phone Number:   | <b>9. Fixed-Wing</b> (category/kind/type, make/model, N#, base):<br>Air Tactical Group Supervisor Aircraft:                  |   |
| Air Operations Branch Director   |   | AM   | FM  |
| Air Support Group Supervisor   |   | 133.2250   | 168.3375  |
| Air Tactical Group Supervisor  |   | TFR  | NONE  |
| Helicopter Coordinator   |   | 169.200  | **Medevac A/G** CALCCORD<br>Rx 156.0750 tn 156.7 / Tx 156.0750 tn 156.7 |
| Helibase Manager   | John Kaisersatt   | RX<br>171.5500   | TX Tone 8<br>164.1500   |
| <b>10. Helicopters</b> (use additional sheets as necessary):   |   | 168.3500   | NONE  |
| Name:  | Phone Number:   | 168.625  | T1 110.9  |
| Category/Kind/Type   | Make/Model  | Base   | Available   |
| Type 2   | Bell 205 A1 ++  | Tusi   | 08:30   |
| Type 1   | Sikorsky S61A   | Tusi   | 08:30   |
|  |   |  |   |
|  |   |  |   |
|  |   |  |   |
|  |   |  |   |
|  |   |  |   |
|  |   |  |   |
|  |   |  |   |
| <b>11. Prepared by:</b> Name: John Kaisersatt  |   | Position/Title: HEBM<br>Signature: _____   |   |
| Date/Time: 10/27/20 18:00  |   |  |   |

## AIR OPERATIONS SUMMARY (ICS 220)

|   |                    |  |      |   |       |                         |  |
|---|--------------------|--|------|---|-------|-------------------------|--|
| <b>1. Incident Name:</b><br>Dolan   |                    | <b>2. Operational Period:</b><br>Date From: 10/28/20<br>Time From: 07:00           |      | <b>3. Sunrise:</b><br>07:24   |       | <b>Sunset:</b><br>18:12 |  |
| <b>4. Remarks</b> (safety notes, hazards, air operations special equipment, etc.):<br>All GPS Data to be collected in DEGREES, DECIMAL MINUTES format<br>Hoist A/C: CHP H70 Paso Robles<br>SBC H308 Santa Ynez NVG/ALS<br>H406 BEU Bear Valley Day Hoist/BLS<br>*****Utilize CALCORD Freq. for hoist ops***** |                    | <b>5. Ready Alert Aircraft:</b><br>Medivac: Mercy Air 20 FHL<br>New Incident: H527 |      | <b>6. Temporary Flight Restriction Number:</b><br>Altitude:<br>Center Point: (NO TFR)                       |       |                         |  |
|   |                    | <b>8. Frequencies:</b>   |      | <b>9. Fixed-Wing</b> (category/kind/type, make/model, N#, base):<br>Air Tactical Group Supervisor Aircraft: |       |                         |  |
| <b>7. Personnel:</b>  |                    | Name:  |      | Phone Number:   |       |                         |  |
| Air Operations Branch Director  |                    |  |      |   |       |                         |  |
| Air Support Group Supervisor  |                    |  |      |   |       |                         |  |
| Air Tactical Group Supervisor   |                    |  |      |   |       |                         |  |
| Helicopter Coordinator  |                    |  |      |   |       |                         |  |
| Helibase Manager  |                    | John Kaisersatt  |      | (805) 878-4755  |       |                         |  |
| <b>10. Helicopters</b> (use additional sheets as necessary):  |                    |  |      |   |       |                         |  |
| FAA N#  | Category/Kind/Type | Make/Model   | Base | Available   | Start | Remarks                 |  |
|   |                    |  |      |   |       |                         |  |
|   |                    |  |      |   |       |                         |  |
|   |                    |  |      |   |       |                         |  |
|   |                    |  |      |   |       |                         |  |
|   |                    |  |      |   |       |                         |  |
|   |                    |  |      |   |       |                         |  |
|   |                    |  |      |   |       |                         |  |
| <b>11. Prepared by:</b> Name: John Kaisersatt   |                    | Position/Title: HEBM   |      | Signature: _____  |       |                         |  |
| <b>ICS 220, Page 1</b>  |                    | Date/Time: 10/27/20 18:00  |      |   |       |                         |  |

| INCIDENT RADIO COMMUNICATIONS PLAN I-205                |              | 1. INCIDENT NAME              |                  | 2. DATE/TIME PREPARED     |     | 3. OPERATIONAL PERIOD DATE/TIME |          |                                |             |  |  |
|---|--------------|-------------------------------|------------------|---------------------------|-----|---------------------------------|----------|--------------------------------|-------------|--|--|
|   |              | <b>DOLAN AND COLMAN FIRES</b> |                  | 10/27/2020 18:30          |     | DAY SHIFT 10/28/2020            |          |                                |             |  |  |
| 4. BASIC RADIO CHANNEL UTILIZATION                      |              |                               |                  |                           |     |                                 |          |                                |             |  |  |
| Ch #  | Function     | Channel Name                  | Assignment       | RX Freq                   | N/W | RX Tone/NAC                     | TX Freq  | N/W                            | TX Tone/NAC | Mode<br>Analog (A)<br>Digital (D)<br>Mixed (M) | Remarks  |
| 1   | COMMAND      | LPF AN 4                      | ALL DIVISIONS    | 171.5500                  | N   | CSQ                             | 164.1500 | N                              | 136.5       | A  | LPF ADMIN NET ALDER PK T4 FOREST DISP NW OF FIRE                     |
| 2   | COMMAND      | LPF AN 6                      | ALL DIVISIONS    | 171.5500                  | N   | CSQ                             | 164.1500 | N                              | 156.7       | A  | LPF ADMIN NET PIEDRAS BLANCAS T6 FOREST DISPATCH SOUTH OF FIRE       |
| 3   | COMMAND      | LPF AN 8                      | ALL DIVISIONS    | 171.5500                  | N   | CSQ                             | 164.1500 | N                              | 103.5       | A  | LPF ADMIN NET CONE PK T8<br><b>ALL DIVISIONS</b> CONTACT FOREST DISP |
| 4   | COMMAND      | LPF AN10                      | ALL DIVISIONS    | 171.5500                  | N   | CSQ                             | 164.1500 | N                              | 107.2       | A  | LPF ADMIN NET CHEWS RIDGE T10 DIVISION AF/K CONTACT FOREST DISP      |
| 5   | COMMAND      | LPF AN13                      | ALL DIVISIONS    | 171.5500                  | N   | CSQ                             | 164.1500 | N                              | 141.3       | A  | LPF ADMIN NET ANDERSON T13 DIVISION AF/K CONTACT FOREST DISP         |
| 6   | COMMAND      | LPF AN15                      | ALL DIVISIONS    | 171.5500                  | N   | CSQ                             | 164.1500 | N                              | 162.2       | A  | LPF ADMIN NET CALANDRA T15 FOREST DISPATCH EAST OF FIRE              |
| 7   | A/G TACTICAL | A/G TAC                       | DOLAN FIRE A/G   | 163.1500                  | N   | CSQ                             | 163.1500 | N                              | CSQ         | A  | AIR TO GROUND TAC DOLAN FIRE   |
| 8   | A/G COMMAND  | A/G CMD                       | DOLAN FIRE       | 167.5500                  | N   | CSQ                             | 167.5500 | N                              | CSQ         | A  | AIR TO GROUND CMD DOLAN FIRE   |
| 9   | TACTICAL     | LPF TAC4                      | DOLAN FIRE       | 163.7125                  | N   | CSQ                             | 163.7125 | N                              | CSQ         | A  | LPF TACTICAL - DOLAN FIRE SUPPRESSION REPAIR AND SECO DIV            |
| 10  | TACTICAL     | NIFC T2                       | COLEMAN FIRE     | 168.2000                  | N   | CSQ                             | 168.2000 | N                              | CSQ         | A  | NIFC T2- COLEMAN FIRE DIV A  |
| 11  | TACTICAL     | NIFC T3                       | COLEMAN FIRE     | 168.6000                  | N   | CSQ                             | 168.6000 | N                              | CSQ         | A  | NIFC T3- COLEMAN FIRE DIV Z  |
| 12  | A/G          | COLE A/G                      | COLEMAN FIRE A/G | 169.2000                  | N   | CSQ                             | 169.2000 | N                              | CSQ         | A  | AIR TO GROUND COLEMAN  |
| 13  | COMMAND      | FOR NET8                      | IA WITH FOREST   | 170.4625                  | N   | CSQ                             | 164.9125 | N                              | 103.5       | A  | IA ONLY COMMAND  |
| 14  | TACTICAL     | LPF TAC3                      | IA WITH FOREST   | 168.2625                  | N   | CSQ                             | 168.2625 | N                              | CSQ         | A  | IA ONLY TACTICAL   |
| 15  | MEDEVAC A/G  | CALCORD                       | ALL DIVISIONS    | 156.0750                  | N   | 156.7                           | 156.0750 | N                              | CSQ         | A  | MEDICAL EVAC EMERGENCIES ONLY  |
| 16  | AIRGUARD     | AIRGUARD                      | ALL DIVISIONS    | 168.6250                  | N   | CSQ                             | 168.6250 | N                              | 110.9       | A  | EMERGENCIES ONLY   |
| <b>5. Special Instructions:</b>                         |              |                               |                  |                           |     |                                 |          |                                |             |  |  |
| <b>6. I-205 Prepared By: Communications Unit Leader</b> |              |                               |                  | <b>Name:</b> Peter Willis |     |                                 |          | <b>Signature:</b> Peter Willis |             |  |  |

# EA Silver Team-Contact List

| <b>POSITION</b>                   | <b>NAME</b>      | <b>Contact Number</b>     | <b>Virtual</b> |
|-----------------------------------|------------------|---------------------------|----------------|
| <b>Incident Command</b>           |                  |                           |                |
| ICT3                              | Lucas Minton     | 928-707-1940              |                |
| ICT3                              | Thomas Gonzales  | 559-903-1249              |                |
| ICT3 (t)                          | Mark Alvarado    | 805-680-7702              |                |
| <b>Safety</b>                     |                  |                           |                |
| SOF2                              | Chris Woods      | 573-315-8394              |                |
| SOF2                              | Tom Zeulner      | 805-440-5252              |                |
| MEDL                              | Mike Passarelli  | 330-352-7534              |                |
| MEDL                              | Jim Emerson      | 805-570-9061              |                |
| <b>Public Information</b>         |                  |                           |                |
| PIO2                              | Micah Bell       | 219-405-0125              | Virtual        |
| PIO2                              | Jacob Welsh      | 541-977-2756              |                |
| <b>Liason</b>                     |                  |                           |                |
| LOFR                              | Roger Goldman    | 812-340-4266              |                |
| <b>Operations</b>                 |                  |                           |                |
| OSC2                              | Joe Alyea        | 989-305-1227              |                |
| OSC2                              | Keith Murphy     | 906-250-1382              |                |
| OSC3                              | Steve Cameron    | 231-357-7404              |                |
| DIVS                              | Mark Brown       | 207-233-9348              |                |
| DIVS                              | Mike Rice        | 218-368-2087              |                |
| DIVS                              | Dennis Fiore     | 971-420-7050              |                |
| DIVS(t)                           | Rob Shields      | 906-630-5092              |                |
| DIVS(t)                           | Patrick Johnson  | 218-370-0321              |                |
| <b>Aviation</b>                   |                  |                           |                |
| <b>Planning</b>                   |                  |                           |                |
| PSC2(t)                           | Glenn Palmgren   | 517-243-3487              |                |
| DMOB                              | Dave Lemmein     | 231-631-1597              |                |
| SITL(t)                           | Ben Garrett      | 715-579-3056              |                |
| GISS                              | Matt Judd        | 651-587-1351              |                |
| GISS (t)                          | Brian Houseman   | 910-840-2801              |                |
| IMET                              | Jack Messick     | 208-241-1046              |                |
| ITSS                              | Bill Whitacre    | 573-578-1889              | Virtual        |
| ITSS(t)                           | Brian Lynch      | 845-270-5398              |                |
| <b>Logistics</b>                  |                  |                           |                |
| LSC2                              | Bob Feldtz       | 949-861-1142              |                |
| FACL                              | Dave Avery       | 218-370-9805              |                |
| FACL                              | Tim Murdock      | 805-423-4857              |                |
| GSUL                              | John Badaracco   | 805-833-1106              |                |
| SPUL                              | Mike Beeman      | 805-833-1106              |                |
| FDUL                              | Tim Oland        | 608-799-1805              |                |
| BCMG                              | Brian Bellew     | 916-749-0986              |                |
| ORDM                              | Chris Adamcik    | 936-238-8819              | Virtual        |
| ORDM                              | Trisha Dutrey    | 209-639-9105              |                |
| <b>Orders: cell: 936-238-8819</b> |                  | <b>desk: 936-875-4803</b> |                |
| COML                              | Peter Willis     | 320-630-3193              |                |
| <b>Finance</b>                    |                  |                           |                |
| FSC2                              | Peter Beringer   | 603-970-1338              |                |
| FSC2(t)                           | Deb Niles        | 989-745-2394              | Virtual        |
| TIME                              | Mary Coleman     | 573-210-7073              | Virtual        |
| TIME(t)                           | Valarie Sanchez  | 505-269-7808              | Virtual        |
| PTRC                              | Rosemary Johnson | 218-252-2363              |                |
| EQTR                              | Zach Palmer      | 530-524-0675              |                |

|   |  |   |                                |                                       |  |  |  |   |    |          |    |
|---|--|---|--------------------------------|---------------------------------------|--|--|--|---|----|----------|----|
| <b>MEDICAL PLAN<br/>ICS 206</b>   |  | 1. INCIDENT<br><b>DOLAN/COLEMAN</b>                                 |                                | 2. DATE PREPARED<br><b>10/27/2020</b> |  | 3. TIME PREPARED<br>1800                                 |  | 4. OPERATIONAL PERIOD<br><b>10/28/2020, 0600-2200</b> |    |          |    |
| <b>5. INCIDENT MEDICAL AID STATIONS</b>   |  |   |                                |                                       |  |  |  |   |    |          |    |
| MEDICAL AID STATIONS  |  |   |                                | LOCATION                              |  |  |  | PARAMEDICS  |    |          |    |
|   |  |   |                                |                                       |  |  |  | YES NO  |    |          |    |
| <b>Medical Unit</b>   |  |   |                                | <b>ICP</b>                            |  |  |  | X   |    |          |    |
| <b>6. TRANSPORTATION</b>  |  |   |                                |                                       |  |  |  |   |    |          |    |
| <b>A. AIR AMBULANCES</b>  |  |   |                                |                                       |  |  |  |   |    |          |    |
| NAME  |  |   | LOCATION                       |                                       |  | PHONE  |  | PARAMEDICS  |    |          |    |
|   |  |   |                                |                                       |  |  |  | YES NO  |    |          |    |
| <b>911 Provider</b><br>Day-Night Mission  |  |   | Variable - (40 min ETA)        |                                       |  | Los Padres ECC 805-961-5727                              |  | X   |    |          |    |
| <b>CHP H70</b><br>Hoist Day / Variable Night  |  |   | Paso Robles, CA - (20 min ETA) |                                       |  | Paso Robles ECC 805-239-3553                             |  | X   |    |          |    |
| <b>Mercy Air</b><br>Night   |  |   | FHL, CA - (10 min ETA)         |                                       |  | FHL ECC 831-386-2526                                     |  | X   |    |          |    |
| <b>B. GROUND AMBULANCES &amp; REM TEAMS</b>   |  |   |                                |                                       |  |  |  |   |    |          |    |
| NAME  |  | Last Day  |                                | LOCATION                              |  |  |  | PARAMEDICS  |    |          |    |
|   |  |   |                                |                                       |  |  |  | YES NO  |    |          |    |
| AMR- 2  |  |   |                                | Area of DP-31                         |  |  |  | X   |    |          |    |
| Jim Blincoe EMP-F   |  | 11/5  |                                | Arroyo Seco                           |  |  |  | X   |    |          |    |
| Melanie Miller EMT-P  |  | 10/31   |                                | ICP                                   |  |  |  | X   |    |          |    |
| John Seymer EMT-A   |  | 10/31   |                                | Tusi Helibase                         |  |  |  | X   |    |          |    |
| Atascadero Ambulance 4X4  |  | 11/5  |                                | Coleman Fire DP-5                     |  |  |  | X   |    |          |    |
| SLO-1 Ambulance 4X4   |  | 11/6  |                                | DP-57                                 |  |  |  | X   |    |          |    |
| Barona FD Doll & Hardin EMPF  |  | 11/6  |                                | Coleman DP-76                         |  |  |  | X   |    |          |    |
| Greg O'Gorman EMPF  |  | 11/7  |                                | DP-57                                 |  |  |  | X   |    |          |    |
| REMS-1  |  |   |                                | Coleman                               |  |  |  | X   |    |          |    |
| <b>7. HOSPITALS</b>   |  |   |                                |                                       |  |  |  |   |    |          |    |
| NAME  |  | ADDRESS   |                                | TRAVEL TIME                           |  | PHONE  |  | HELIPAD   |    | BURN CTR |    |
|   |  |   |                                | AIR                                   | GRND   |  |  | YES   | NO | YES      | NO |
| CHOMP LVL 3   |  | 23625 Holman Hwy<br>Monterey, CA                                    |                                | N/A                                   | 1hr<br>20mi  | 831-624-5311   |  |   | X  |          | X  |
| Mee Memorial LVL 3  |  | 300 Canal St<br>King City, CA                                       |                                | 15<br>Min                             | 20min  | 831-385-6000   |  | X   |    |          | X  |
| Santa Clara Valley Med Ctr LVL 1  |  | 751 S. Bascom Ave.<br>San Jose, CA<br>NN37 18.7713 X 121 55.9960    |                                | 60<br>Min                             | 2hrs   | 408-885-5000   |  | X   |    | X        |    |
| Natividad Medical Center LVL 2  |  | 1441 Constitution Blvd.<br>Salinas Ca<br>N36 41.8002 X W121 37.9853 |                                | 25<br>Min                             | 60 Min   | 831-755-6268   |  | X   |    |          |    |
| Community Regional Med Ctr LVL 1  |  | 2823 Fresno St.<br>Fresno, Ca<br>N36 44.5702 X W119 47.0913         |                                | 90<br>Min                             | 180<br>Min   | 559-459-7401   |  | X   |    | X        |    |
| Big Sur Health Center Medical Clinic  |  | 46968 CA-1<br>Big Sur, CA 93920                                     |                                | N/A                                   | 2hrs   | 831-667-2580   |  |   | X  |          | X  |
| <b>8. MEDICAL EMERGENCY PROCEDURES</b>  |  |   |                                |                                       |  |  |  |   |    |          |    |
| <b><u>LINE-EMERGENCY MEDICAL DAY PLAN 0700 - 1930:</u></b>  |  |   |                                |                                       | <b><u>LINE "NON-EMERGENCY INCIDENT" DAY PLAN:</u></b>  |  |  |   |    |          |    |
| - <b>Crew Supervisor</b> to contact Division Supervisor/Operations with:  |  |   |                                |                                       | - <b>Crew Supervisor</b> to contact Division Supervisor with:  |  |  |   |    |          |    |
| <ul style="list-style-type: none"> <li>Patient Complaint, Condition and Location via Tactical or Command frequency. <b>Priority 1/Red &amp; 2/Yellow</b> Patients trigger Incident within Incident (IWI).</li> </ul>  |  |   |                                |                                       | <ul style="list-style-type: none"> <li>Patient Complaint, Condition and Location via Tactical or Los Padres frequency. <b>Priority 3/Green</b> Patients <b>do not</b> trigger Incident within Incident (IWI).</li> </ul>   |  |  |   |    |          |    |
| - <b>Division Supervisor/Operation</b> contacts Los Padres Communications:  |  |   |                                |                                       | - <b>Division Supervisor</b> contacts Los Padres Communications:   |  |  |   |    |          |    |
| <ul style="list-style-type: none"> <li>Division Supervisor or POC* will run "<b>Medical –Emergency</b>" on the Los Padres frequency.</li> <li>Division Supervisor or POC* to use "<b>Medical Incident Report</b>" worksheet on back of this page or back of IRPG.</li> <li>Los Padres Communication contacts Medical Unit Leader on the Command frequency or camp frequency.</li> </ul> |  |   |                                |                                       | <ul style="list-style-type: none"> <li>Division Supervisor or POC* will run "<b>Non-Emergency Incident</b>" on the Los Padres frequency.</li> <li>Division Supervisor or POC* will use "<b>Medical Incident Report</b>" worksheet on the back of this page or back of IRPG.</li> <li>Los Padres Communications contacts Medical Unit Leader on the Command frequency or camp frequency.</li> </ul> |  |  |   |    |          |    |
| <b><u>AFTER HOUR MEDICAL PLAN 1930 - 0700:</u></b>  |  |   |                                |                                       |  |  |  |   |    |          |    |
| -   |  |   |                                |                                       | Contact <b>AMR Dispatch at 911 or 831-796-6444</b> , then contact <b>MEDL</b> who will be located in the medical tent during the night.  |  |  |   |    |          |    |
| <b>ICS 206</b>  |  | 9. PREPARED BY: (Medical Unit Leader)<br>Mike Passarelli MEDL       |                                |                                       |  | 10. REVIEWED BY: (Safety Officer)<br>Chris Woods SOF2(t) |  |   |    |          |    |

# COVID-19 Best Practices / Mitigation

Minimize risk and limit exposure to COVID-19 by daily screening, minimizing large group settings, social distancing, wearing face coverings, hand washing, and practicing module of one concept.

At the beginning of the shift, supervisors should remind their personnel to self-screen for symptoms.

This document to be placed in the daily IAP

## WILDLAND FIRE COVID-19 SCREENING TOOL

Today or in the past 24 hours, have you had any of the following symptoms<sup>1</sup>?

| Symptom   |
|---|
| Cough more than expected?   |
| Shortness of breath or difficulty breathing?                        |
| Fever? Chills?  |
| Muscle pain, outside your normal for firefighting?                  |
| Sore throat?  |
| New loss of taste or smell?   |
| Fatigue, outside your normal for firefighting?                      |
| Headache, outside your normal for firefighting?                     |
| Congestion or runny nose, outside your normal for firefighting?     |
| Nausea or vomiting  |
| Diarrhea  |
| <i>* Take temperature with no-touch thermometer, if available *</i> |

<sup>1</sup>Symptoms of Coronavirus

<https://www.cdc.gov/coronavirus/2019-ncov/symptoms-testing/symptoms.html>

*Do your part to minimize your risk of exposure and limit the spread COVID-19.*

## Public Considerations

- ⇒ Wear a face covering when in public.
- ⇒ Wash your hands often.
- ⇒ Use hand sanitizer after pumping gas.
- ⇒ Use hand sanitizer prior to getting into your vehicle after visiting the grocery store or a restaurant.
- ⇒ Set the example while in the public eye.

*\*Keep in mind that fire camp is in a city with a populous and the potential for the COVID virus to be present is greater.*

If you answered Yes to these symptoms, report it to your supervisor immediately, self-isolate away from other people until given direction and call **MEDICAL**.

---

# COVID-19 OPERATIONAL FLOWCHART

PERSONNEL SHALL BE SCREENED FOR S&S OF COVID-19 AT CHECK-IN

ALL SUPERVISORS SHALL MONITOR THEIR PERSONNEL

- ALL PERSONNEL SHALL:**
- PRACTICE PHYSICAL DISTANCING
  - WEAR A MASK WHEN LESS THAN 6' FROM OTHERS
  - SHALL SELF-MONITOR FOR S&S
  - WASH HANDS OFTEN / USE HAND SANITIZER
  - AVOID FACIAL CONTACT WITH YOUR HANDS
  - NOTIFY THE MEDICAL UNIT OF ANY FLU-LIKE S&S
  - DO NOT SHARE TOOLS / EQUIPMENT

- SIGNS & SYMPTOMS INCLUDE:**
- CHILLS OR FEVER > 100.4°
  - COUGH, AND/OR SHORT OF BREATH
  - LOSS OF TASTE OR SMELL, SORE THROAT
  - CONGESTION, RUNNY NOSE
  - FATIGUE, HEADACHE, BODY ACHES
  - NAUSEA OR VOMITING
- (Do not report to your assignment if you are sick)*

- PERSONNEL WHO DEVELOP FLU-LIKE SYMPTOMS SHALL:**
- NOTIFY THEIR IMMEDIATE SUPERVISOR
  - REPORT TO THE MEDICAL UNIT FOR EVALUATION

- MEDICAL UNIT WILL:**
- EVALUATE PERSONNEL / MAKE RECOMMENDATIONS
  - TRACK PERSONNEL FOR THE INCIDENT
    - CONTACT-TRACING
  - MAKE NECESSARY TEAM & FOREST NOTIFICATIONS

- PERSONNEL EXPERIENCING FLU-LIKE SYMPTOMS SHALL BE TESTED:**
- SEEK MEDICAL CARE FOR FURTHER TESTING ( TESTING SITES PROVIDED BY THE MEDL )
  - AFTER TESTING IS COMPLETE, PERSONNEL MAY HAVE TO QUARANTINE WHILE AWAITING RESULTS

- IF COVID-POSITIVE:**
- PERSONNEL SHALL ISOLATE AT APPROVED LOCATION UNTIL DEMOB'D (LOCATION PROVIDED BY THE MEDL)

- IF NEGATIVE:**
- FOLLOW AGENCY SPECIFIC GUIDELINES
  - OR, PER CDC, NO FURTHER ACTION REQUIRED

- SUPERVISOR SHOULD:**
- MAKE NOTIFICATIONS TO HOME UNIT
  - BEGIN AGENCY WORK-COMP PROCESS
  - COMPLETE DEMOB PROCESS

- PERSONNEL: CONTINUE TO SELF-MONITOR**  
*(Do not report to your assignment if you are sick)*  
**IF PERSONNEL IS TOO SICK, NOTIFY SUPERVISOR**

IMT WILL PROVIDE DIRECTION AND SUPPORT UNTIL RECEIVED BY THE HOME UNIT

EA IMT Silver - MEDICAL UNIT WILL TRACK AND MONITOR ALL COVID RELATED EXPOSURES

# IN-CAMP ISOLATION FLOWCHART:

- IN-CAMP GUIDELINES AS FOLLOWS:**
- PERSONNEL SHALL ISOLATE AT APPROVED LOCATION ONCE EVALUATED BY MEDICAL STAFF
  - MEDICAL UNIT WILL MONITOR PERSONNEL UNTIL DEMOBILIZED FROM THE INCIDENT

**SHOULD PERSONNEL'S HEALTH STATUS DETERIORATE, CONTACT THE MEDICAL UNIT ASAP**

- MEDICAL UNIT SHALL:**
- CONTACT COMMUNICATIONS - ARRANGE FOR TRANSPORTATION TO HOSPITAL IF NEEDED
  - CALL THE IMMEDIATE SUPERVISOR
  - MAKE NECESSARY TEAM & FOREST NOTIFICATIONS

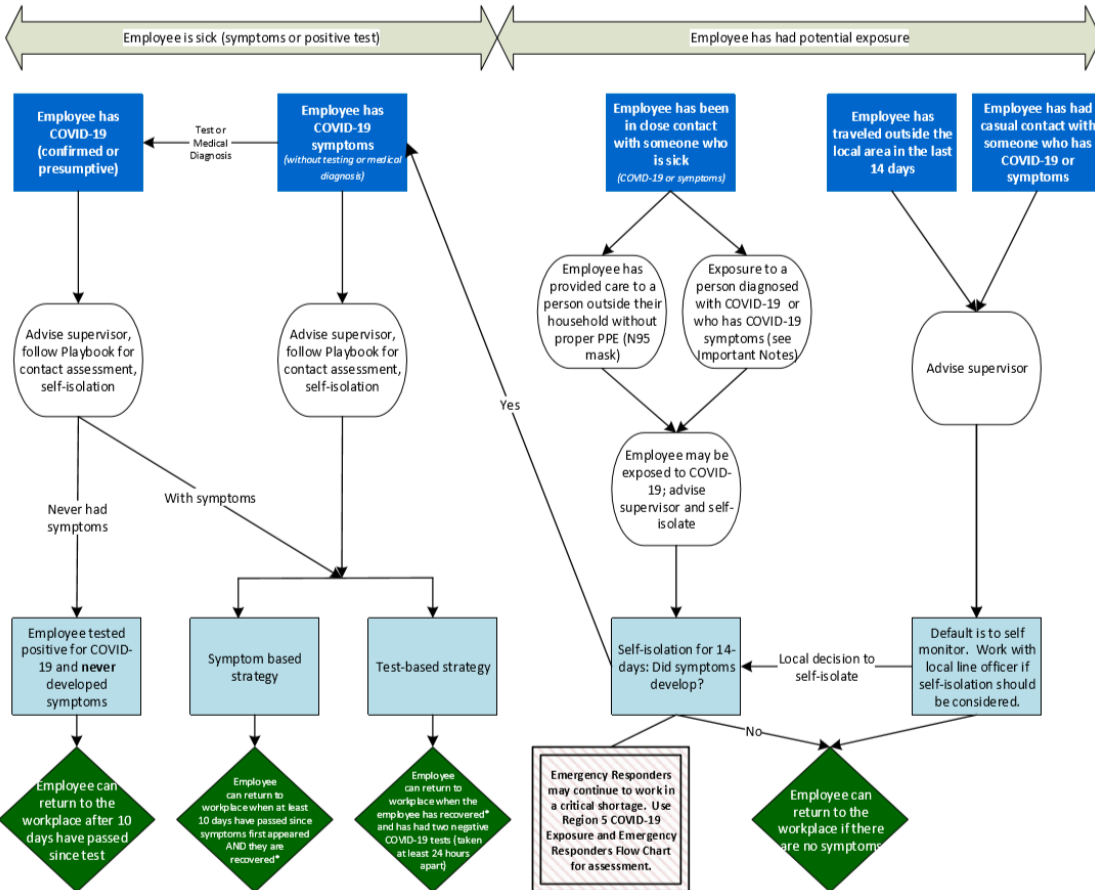
**FEDERAL EMPLOYEES SHALL REFER TO REGION 5 — COVID-19 ACTION PROCESS FOR AGENCY SPECIFIC GUIDANCE**



## Region 5 Pacific Southwest Region COVID-19 Response Action Process

August 20, 2020

### COVID-19 Response and Employee Notification



**Important Notes:**

- \* Recovered is defined as 10 days since symptoms first appeared AND 24 hours with no fever without the use of fever-reducing medicines AND other symptoms of COVID-19 are improving.
- Symptoms of COVID-19 include cough, shortness of breath, trouble breathing, fever, chills, repeated shaking with chills, muscle or body aches, headache, sore throat, new loss of taste or smell, congestion or runny nose, nausea or vomiting, or diarrhea.
- Contact Assessment should be conducted to help determine potential exposure of additional employees; conduct assessment for the 2-day period before illness onset or test date of sick employees, whichever came first.
- Close contact is defined as less than 6 feet, for at least 15 minutes with or without face coverings/masks. Casual contact is defined as less than 6 feet for less than 15 minutes or more than 6 feet for more than 15 minutes.
- Any employee in "close contact with someone who is sick" may return to the workplace if the sick person is tested for COVID-19 and the test is negative.
- Contact with exposed individuals is classified as secondary contact and does not typically require self-isolation unless the exposed individual tests positive.
- You do not need to self-isolate unless you meet one of the criteria identified.
- Always follow the advice of a medical provider, if given, including any need for isolation or clearance for return-to-duty.

*This document is subject to change based on CDC guidance.*



# **S A F E T Y   M E S S A G E**

## ***Dolan and Coleman Fire***

October 28, 2020

### **LCES IN PLACE EVERY TIME**

#### **Major Hazards and Risks:**

- ✓ **Situational Awareness** – Conduct thorough briefings with your crew on all components of the IAP. Weather forecast should be highlighted in crew briefing today. Crews know where your EMTs and incident ambulances are, and ensure communications are in place. Make LCES personal for your piece of real estate.
  - ✓ **Fire Behavior** - Watch for alignment of the wind flow in the drainages in the case of initial attack. Predicted weather will be conducive to very high and extreme fire behavior. Watch for increased spotting potential.
  - ✓ **Communications** - Command seems to have good coverage, but there is a delay as each repeater begins transmitting. Give a pause after pushing the PTT button to allow for all repeaters to begin transmitting. Inform communications if you locate any dead spots. Keep in constant communications with your crew, adjacent forces and appropriate overhead. Test command before engaging —use human repeaters where needed to ensure positive communications.
  - ✓ **Driving Safety** – Slow down, watch for powdered out corners and soft shoulders. The Nacimiento-Fergusson Rd is closed to all, but fire personnel. Folks are still testing that, drive accordingly.
  - ✓ **Heavy Equipment** – Ensure all personnel are visible to dozers, maintain communications and mitigate overhead and rolling hazards. Maintain adequate separation between dozers and crews. Utilize traffic control on roads when transporting dozers to different parts of the fire. Ensure good comms with operators (their equipment can be very loud).
- 

**Prepared by:** Tom Zeulner SOF2, Chris Woods SOF2(t)

# DIRECTIONS FOR FILLING OUT A CTR/SHIFT TICKET AND SUBMITTING THEM ELECTRONICALLY

**Financial Information:**

**Fire Name:** Dolan

**Fire Number:** CA-LPF-002428 / P5NF6M21 (0507)

**Financial Information:**

Coleman

CA-LPF-003161 / P5NPD921 (0507)

**Fire Office Responsible for Fire:** Los Padres Nation Forest

**Remarks Section of CTR or Shift Ticket:** Your phone #, email and Fire Name

**Finance Email:** [2020.dolan.finance@firenet.gov](mailto:2020.dolan.finance@firenet.gov) (We will use this email for both fires)

**Finance Documents Needed (If Not Already Submitted):**

|   |  |
|---|--|
| <b>Overhead:</b> <ul style="list-style-type: none"><li>• Resource Order</li><li>• AD Hire Form (If an AD)</li><li>• CTR's</li></ul> | <b>Cooperator:</b> <ul style="list-style-type: none"><li>• Cooperative Agreement</li><li>• Resource Order</li><li>• Shift Ticket</li></ul> |
|---|--|

**Please send in your CTR or Shift Ticket daily. You can:**

1. Send a hard copy of CTR or Shift Ticket
2. Take a picture of signed CTR or Shift ticket and email in  
(Please place your O# or E# in the subject line of your email)
3. Use QR code to download a fillable CTR or Shift Ticket and email signed copy in

**For Finance assistance please contact:**

**Mary Coleman at (573) 210-7073**

**Or (916) 798-3083**

## QR Codes for:

Finance Email



Finance Check-in



Fillable CTR & Shift Ticket



**10/28/2020**

**Tentative Release**

**CREWS**

|       |      |        |              |
|-------|------|--------|--------------|
| C-5   | 0800 | (HC2I) | Cobras 1     |
| C-126 | 0900 | (HC2)  | Black Eagles |

**EQUIPMENT**

|       |      |        |         |
|-------|------|--------|---------|
| E-562 | 0830 | (ENG6) | ENG 673 |
|-------|------|--------|---------|

**OVERHEAD**

|           |      |        |                    |
|-----------|------|--------|--------------------|
| O-9       | 0730 | (EMPF) | Roger Colombo      |
| O-1228    | 1000 | (ARCH) | Krystal Kissinger  |
| O-23      | 1500 | (PIO2) | Jacob Welsh        |
| O-1272.15 | 1600 | (MEDL) | Michael Passarelli |
| O-1272.3  | 1700 | (LOFR) | Roger Goldman      |

**10/29/2020**

**Tentative Release**

**CREWS**

|       |      |        |                         |
|-------|------|--------|-------------------------|
| C-4   | 0800 | (HC2I) | Descanso Crew 5         |
| C-123 | 0900 | (HC2)  | 15055-Pacific Oasis Inc |

**EQUIPMENT**

|       |      |        |                            |
|-------|------|--------|----------------------------|
| E-569 | 0730 | (DOZ3) | Algerine West Construction |
| E-538 | 1600 | (ENG3) | LPF E-18                   |
| E-542 | 1600 | (ENG7) | LPF E-17                   |

**OVERHEAD**

|           |      |        |                     |
|-----------|------|--------|---------------------|
| O-1232    | 0830 | (AEMF) | John Seymer         |
| O-1272.6  | 1600 | (OSC2) | Joe Aylea           |
| O-1272.5  | 1600 | (OSC2) | Keith Murphy        |
| O-1272.29 | 1600 | (EQPM) | Michael Trierweiler |
| O-1272.19 | 1700 | (FACL) | David Avery         |

|           |      |        |                   |
|-----------|------|--------|-------------------|
| O-1272.11 | 1700 | (DIVS) | Mark Brown        |
| O-1272.22 | 1700 | (SITL) | Ben Garrett       |
| O-1272.26 | 1700 | (DIVS) | Patrick Johnson   |
| O-1272.25 | 1700 | (LSC2) | Tim Oland         |
| O-1272.8  | 1800 | (PSC2) | Glenn Palmgren    |
| O-1216    | 1800 | (ARCH) | Molly Ray         |
| O-1272.27 | 1800 | (DIVS) | Robert Shields    |
| O-1272.28 | 1800 | (COML) | Peter Willis      |
| O-1272.14 | 1800 | (ITSS) | William Whitacre  |
| O-1276    | 1800 | (RCDM) | Lance Weinbrenner |

**10/30/2020**

**Tentative Release**

**EQUIPMENT**

|       |      |        |             |
|-------|------|--------|-------------|
| E-599 | 0800 | (WTS1) | A-1         |
| E-583 | 0830 | (DOZ2) | 8894        |
| E-591 | 0900 | (EXCA) | FHL 8890    |
| E-548 | 0930 | (EXCA) | Black Range |
| E-590 | 1000 | (EXCA) | BDRM        |

**OVERHEAD**

|           |      |        |                  |
|-----------|------|--------|------------------|
| O-1240    | 0730 | (HEQB) | Kevin Daugherty  |
| O-13      | 1600 | (EQTR) | Barbara Ortega   |
| O-1272.31 | 0800 | (PTRC) | Rosemary Johnson |
| O-1321    | 0800 | (IMET) | Jack Messick     |
| O-1272.12 | 0800 | (DIVS) | Mike Rice        |
| O-1272.10 | 1500 | (FSC2) | Peter Beringer   |
| O-1272.24 | 1600 | (TIME) | Valarie Sanchez  |



# MEDICAL PLAN (ICS 206 WF)

Controlled Unclassified Information//Basic

## Medical Incident Report

**FOR A NON-EMERGENCY INCIDENT, WORK THROUGH CHAIN OF COMMAND TO REPORT AND TRANSPORT INJURED PERSONNEL AS NECESSARY.**

**FOR A MEDICAL EMERGENCY: IDENTIFY ON SCENE INCIDENT COMMANDER BY NAME AND POSITION AND ANNOUNCE "MEDICAL EMERGENCY" TO INITIATE RESPONSE FROM IMT COMMUNICATIONS/DISPATCH.**

Use the following items to communicate situation to communications/dispatch.

**1. CONTACT COMMUNICATIONS / DISPATCH (Verify correct frequency prior to starting report)**

*Ex: "Communications, Div. Alpha. Stand-by for Emergency Traffic."*

**2. INCIDENT STATUS: Provide incident summary (including number of patients) and command structure.**

*Ex: "Communications, I have a Red priority patient, unconscious, struck by a falling tree. Requesting air ambulance to Forest Road 1 at (Lat./Long.) This will be the Trout Meadow Medical, IC is TFLD Jones. EMT Smith is providing medical care."*

|   |   |   |
|---|---|---|
| Severity of Emergency / Transport Priority        | <input type="checkbox"/> RED / PRIORITY 1 Life or limb threatening injury or illness. Evacuation need is IMMEDIATE<br><i>Ex: Unconscious, difficulty breathing, bleeding severely, 2° – 3° burns more than 4 palm sizes, heat stroke, disoriented.</i><br><input type="checkbox"/> YELLOW / PRIORITY 2 Serious Injury or illness. Evacuation may be DELAYED if necessary.<br><i>Ex: Significant trauma, unable to walk, 2° – 3° burns not more than 1-3 palm sizes.</i><br><input type="checkbox"/> GREEN / PRIORITY 3 Minor Injury or illness. Non-Emergency transport<br><i>Ex: Sprains, strains, minor heat-related illness.</i> |   |
| Nature of Injury or Illness & Mechanism of Injury |   | <i>Brief Summary of Injury or Illness<br/>(Ex: Unconscious, Struck by Falling Tree)</i> |
| Transport Request                                 |   | <i>Air Ambulance / Short Haul/Hoist<br/>Ground Ambulance / Other</i>                    |
| Patient Location                                  |   | <i>Descriptive Location &amp; Lat. / Long. (WGS84)</i>                                  |
| Incident Name                                     |   | <i>Geographic Name + "Medical"<br/>(Ex: Trout Meadow Medical)</i>                       |
| On-Scene Incident Commander                       |   | <i>Name of on-scene IC of Incident within an Incident (Ex: TFLD Jones)</i>              |
| Patient Care                                      |   | <i>Name of Care Provider<br/>(Ex: EMT Smith)</i>  |

**3. INITIAL PATIENT ASSESSMENT: Complete this section for each patient as applicable (start with the most severe patient)**

Patient Assessment: See IRPG page 106

Treatment:

**4. TRANSPORT PLAN:**

Evacuation Location (if different): (Descriptive Location (drop point, intersection, etc.) or Lat. / Long.) Patient's ETA to Evacuation Location:

Helispot / Extraction Site Size and Hazards:

**5. ADDITIONAL RESOURCES / EQUIPMENT NEEDS:**

*Example: Paramedic/EMT, Crews, Immobilization Devices, AED, Oxygen, Trauma Bag, IV/Fluid(s), Splints, Rope rescue, Wheeled litter, HAZMAT, Extrication*

**6. COMMUNICATIONS: Identify State Air/Ground EMS Frequencies and Hospital Contacts as applicable**

| Function    | Channel Name/Number | Receive (RX) | Tone/NAC * | Transmit (TX) | Tone/NAC * |
|-------------|---------------------|--------------|------------|---------------|------------|
| COMMAND     |                     |              |            |               |            |
| AIR-TO-GRND |                     |              |            |               |            |
| TACTICAL    |                     |              |            |               |            |

**7. CONTINGENCY: Considerations: If primary options fail, what actions can be implemented in conjunction with primary evacuation method? Be thinking ahead.**

**8. ADDITIONAL INFORMATION: Updates/Changes, etc.**

**REMEMBER:** Confirm ETA's of resources ordered. Act according to your level of training. Be Alert. Keep Calm. Think Clearly. Act Decisively.