

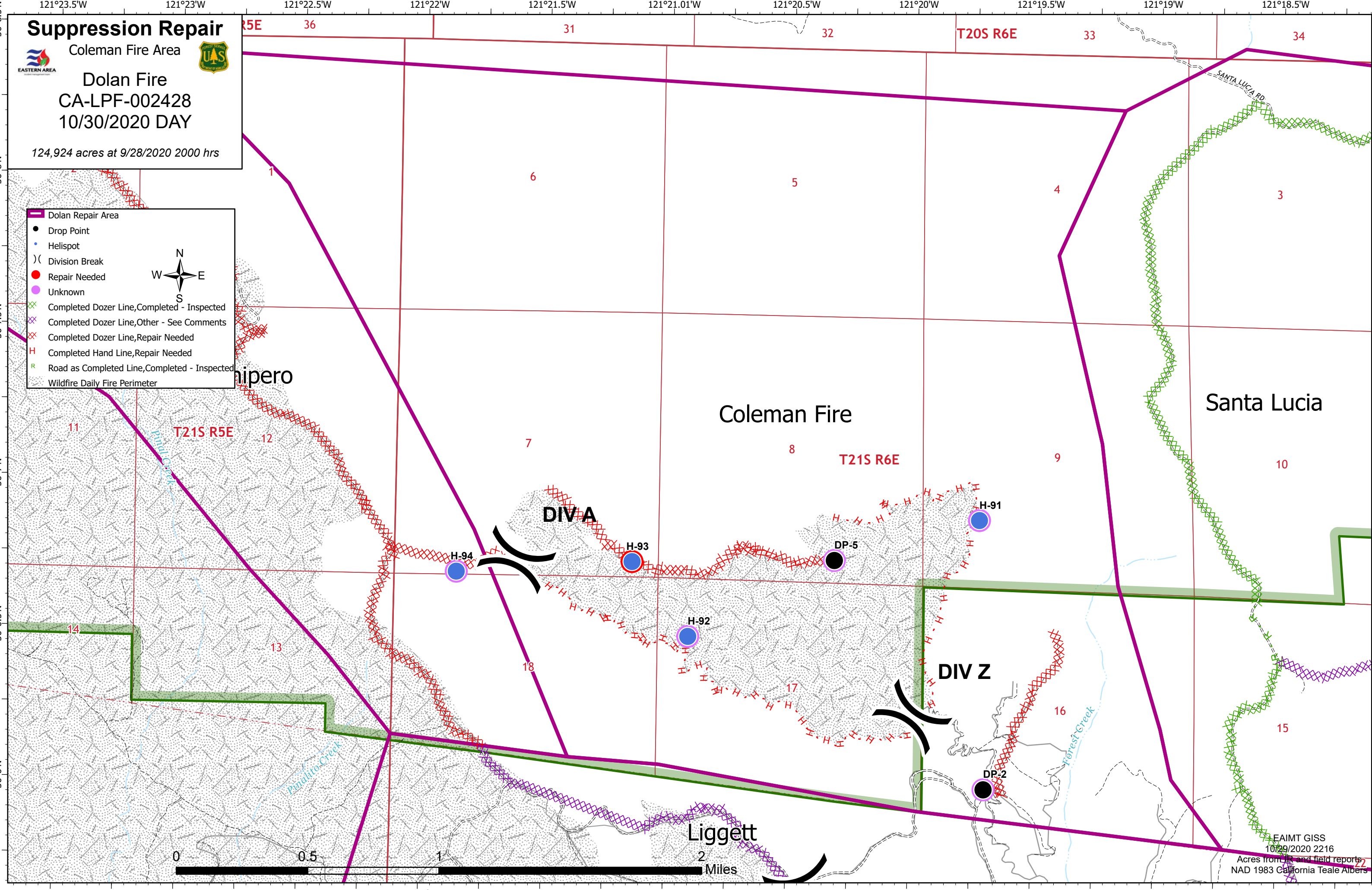
Suppression Repair

Coleman Fire Area

Dolan Fire
CA-LPF-002428
10/30/2020 DAY

124,924 acres at 9/28/2020 2000 hrs

- Dolan Repair Area
- Drop Point
- Helispot
- Division Break
- Repair Needed
- Unknown
- Completed Dozer Line, Completed - Inspected
- Completed Dozer Line, Other - See Comments
- Completed Dozer Line, Repair Needed
- Completed Hand Line, Repair Needed
- Road as Completed Line, Completed - Inspected
- Wildfire Daily Fire Perimeter



EA/MT GISS
10/29/2020 2216
Acres from GIS and field reports
NAD 1983 California Teale Albers

Suppression Repair

Cone Area

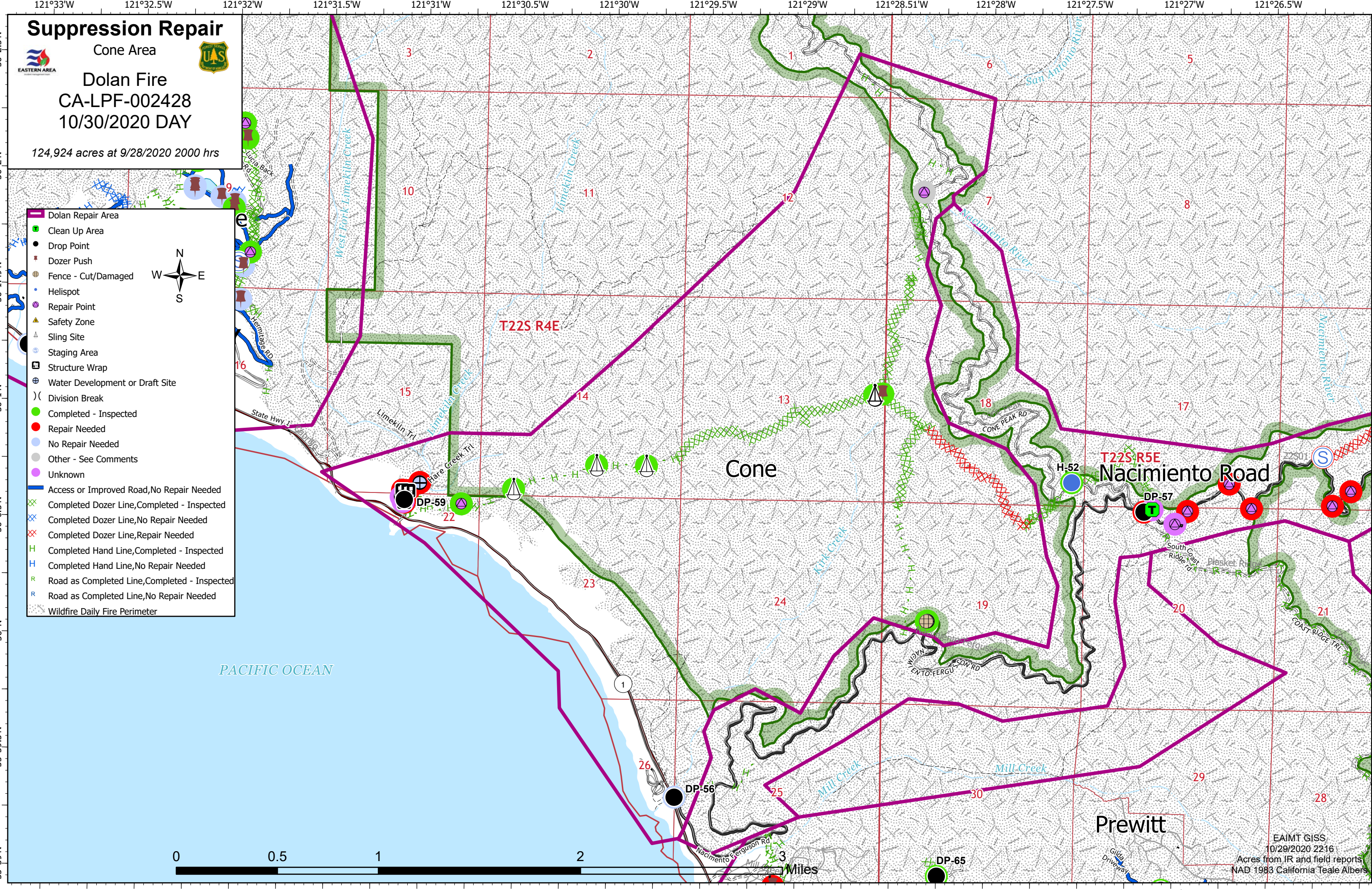
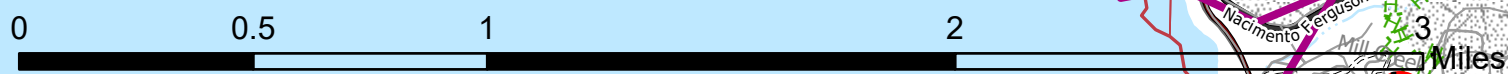


Dolan Fire

CA-LPF-002428
10/30/2020 DAY

124,924 acres at 9/28/2020 2000 hrs

- Dolan Repair Area
- Clean Up Area
- Drop Point
- Dozer Push
- Fence - Cut/Damaged
- Helispot
- Repair Point
- Safety Zone
- Sling Site
- Staging Area
- Structure Wrap
- Water Development or Draft Site
- Division Break
- Completed - Inspected
- Repair Needed
- No Repair Needed
- Other - See Comments
- Unknown
- Access or Improved Road, No Repair Needed
- Completed Dozer Line, Completed - Inspected
- Completed Dozer Line, No Repair Needed
- Completed Dozer Line, Repair Needed
- Completed Hand Line, Completed - Inspected
- Completed Hand Line, No Repair Needed
- Road as Completed Line, Completed - Inspected
- Road as Completed Line, No Repair Needed
- Wildfire Daily Fire Perimeter



EAIMT GISS
10/29/2020 2216
Acres from IR and field reports
NAD 1983 California Teale Albers

Suppression Repair

Hermatige Area



Dolan Fire

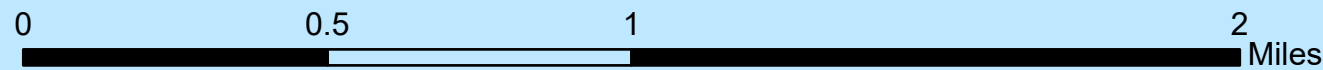
CA-LPF-002428
10/30/2020 DAY

124,924 acres at 9/28/2020 2000 hrs

- Dolan Repair Area
- Drop Point
- Dozer Push
- Helispot
- Repair Point
- Safety Zone
- Staging Area
- Stream Crossing
- Division Break
- Completed - Inspected
- No Repair Needed
- Other - See Comments
- Unknown
- Access or Improved Road, No Repair Needed
- Completed Dozer Line, Completed - Inspected
- Completed Dozer Line, No Repair Needed
- Completed Dozer Line, Other - See Comments
- Completed Hand Line, Completed - Inspected
- Completed Hand Line, No Repair Needed
- Road as Completed Line, Completed - Inspected
- Road as Completed Line, No Repair Needed
- Wildfire Daily Fire Perimeter



PACIFIC OCEAN



Hermatige



DIV Y

EAIMT GISS
10/29/2020 2216
Acres from IR and field reports
NAD 1983 California Albers

Core

Suppression Repair

Indians Area

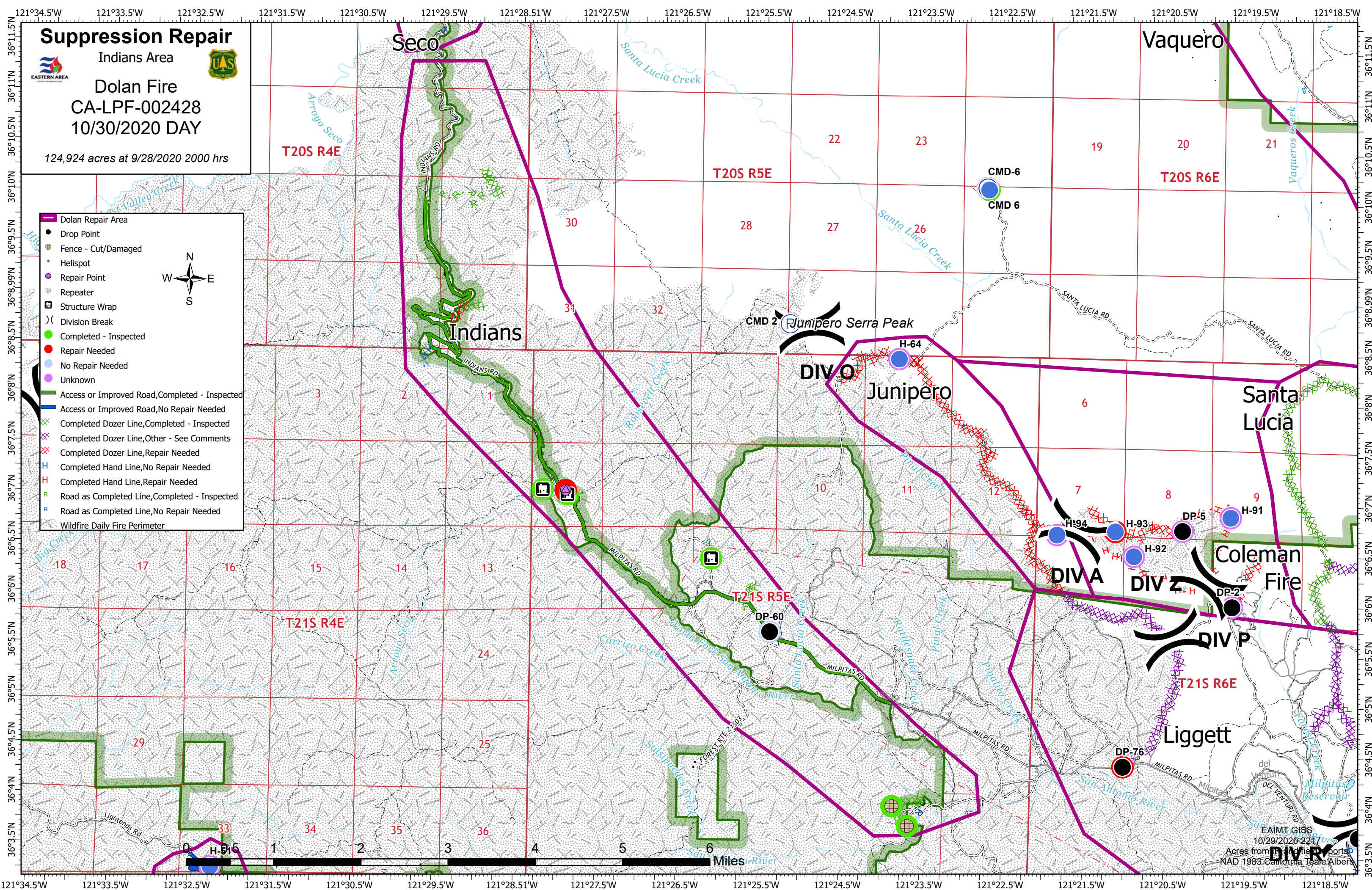
Dolan Fire

CA-LPF-002428

10/30/2020 DAY

124,924 acres at 9/28/2020 2000 hrs

- █ Dolan Repair Area
- Drop Point
- Fence - Cut/Damaged
- Helispot
- Repair Point
- ⊙ Repeater
- Structure Wrap
-) Division Break
- █ Completed - Inspected
- █ Repair Needed
- █ No Repair Needed
- █ Unknown
- █ Access or Improved Road, Completed - Inspected
- █ Access or Improved Road, No Repair Needed
- ⊗ Completed Dozer Line, Completed - Inspected
- ⊗ Completed Dozer Line, Other - See Comments
- ⊗ Completed Dozer Line, Repair Needed
- H Completed Hand Line, No Repair Needed
- H Completed Hand Line, Repair Needed
- R Road as Completed Line, Completed - Inspected
- R Road as Completed Line, No Repair Needed
- Wildfire Daily Fire Perimeter



Suppression Repair

Junipero Area



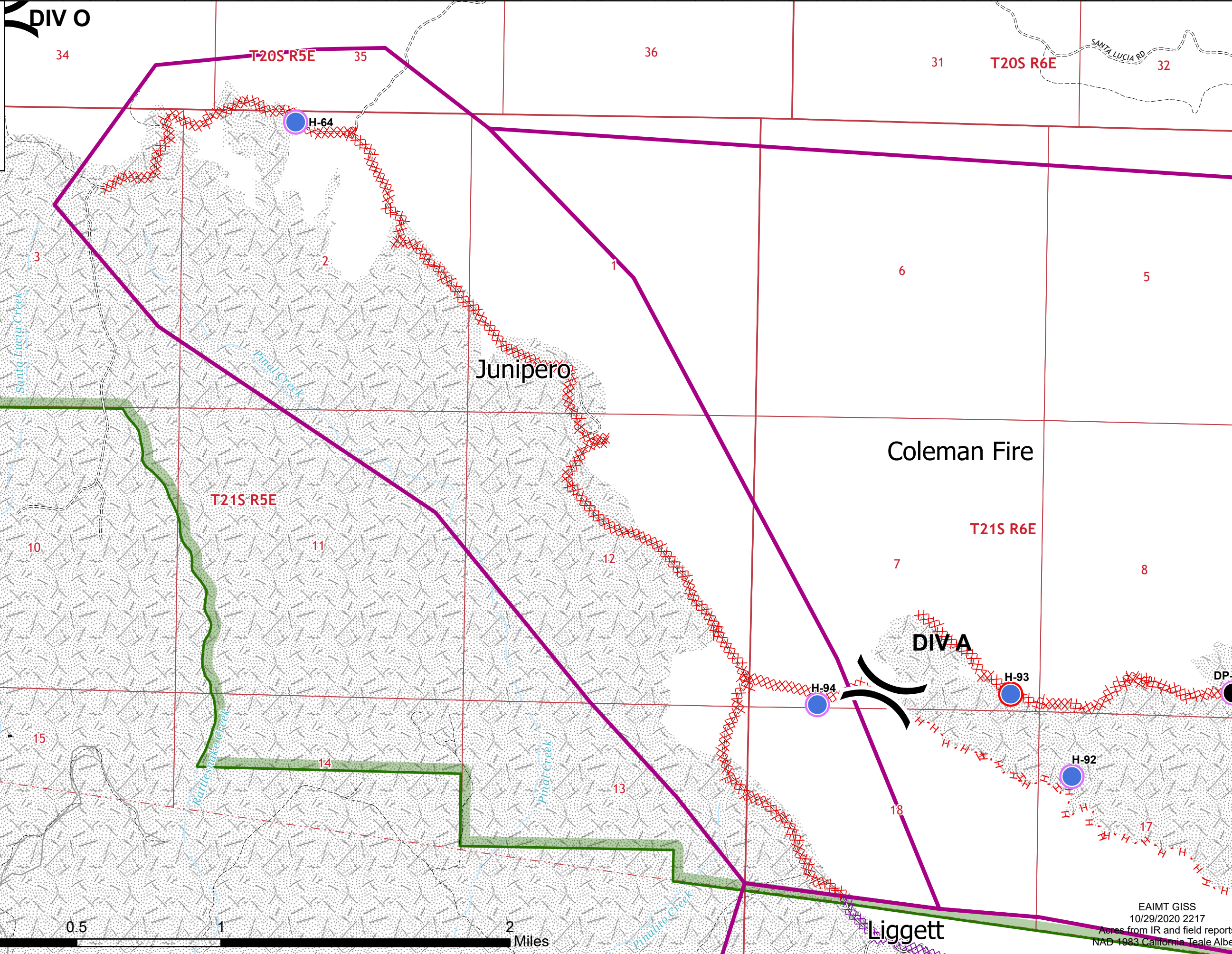
Dolan Fire

CA-LPF-002428
10/30/2020 DAY

124,924 acres at 9/28/2020 2000 hrs

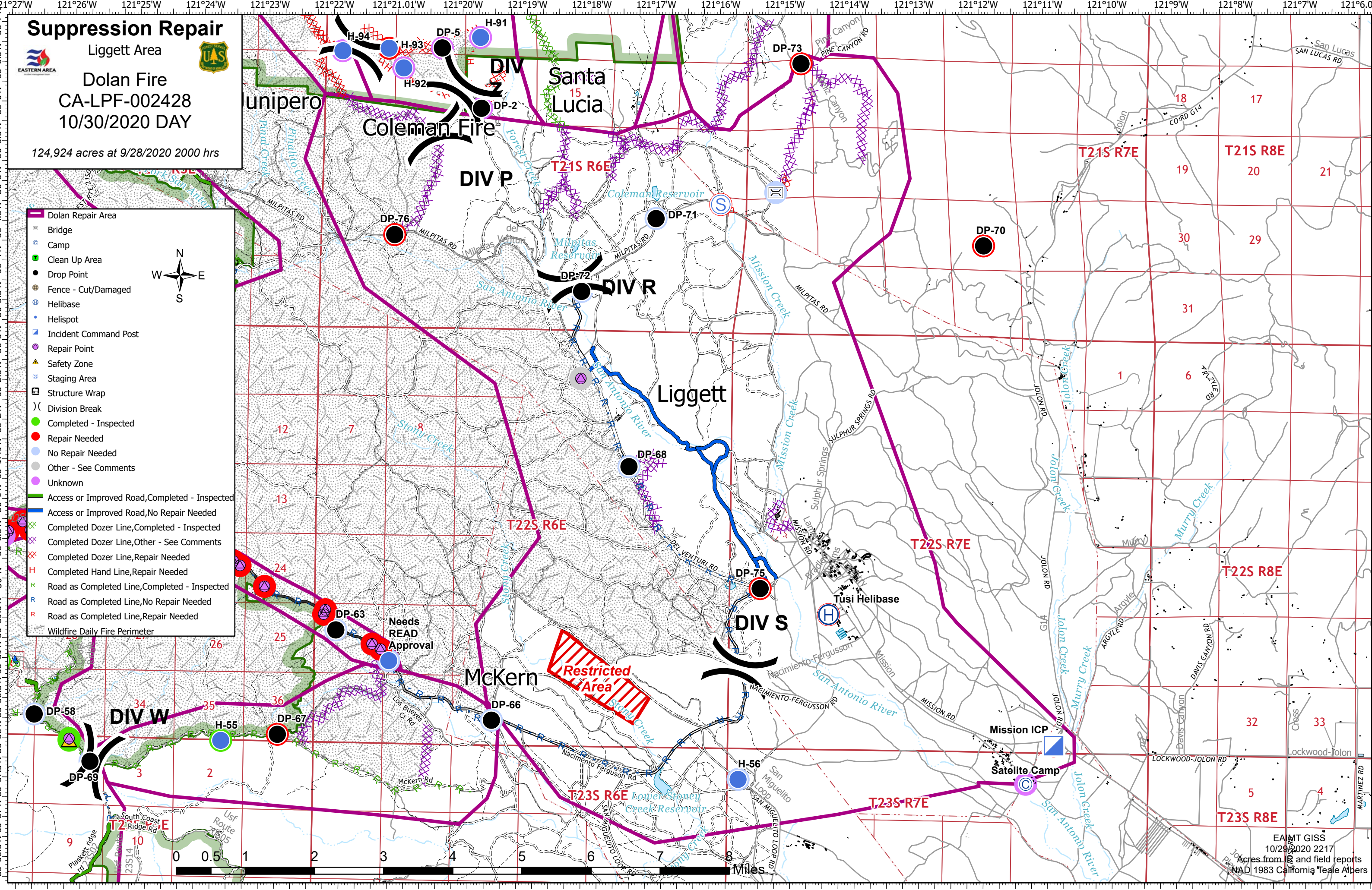
Legend

- Dolan Repair Area
- Drop Point
- Helispot
- Repeater
- Division Break
- Repair Needed
- Unknown
- Access or Improved Road, Completed - Inspected
- Completed Dozer Line, Completed - Inspected
- Completed Dozer Line, Other - See Comments
- Completed Dozer Line, Repair Needed
- Completed Hand Line, Repair Needed
- Wildfire Daily Fire Perimeter



Suppression Repair
 Liggett Area
Dolan Fire
 CA-LPF-002428
 10/30/2020 DAY
 124,924 acres at 9/28/2020 2000 hrs

- Dolan Repair Area
- Bridge
- Camp
- Clean Up Area
- Drop Point
- Fence - Cut/Damaged
- Helibase
- Helispot
- Incident Command Post
- Repair Point
- Safety Zone
- Staging Area
- Structure Wrap
- Division Break
- Completed - Inspected
- Repair Needed
- No Repair Needed
- Other - See Comments
- Unknown
- Access or Improved Road, Completed - Inspected
- Access or Improved Road, No Repair Needed
- Completed Dozer Line, Completed - Inspected
- Completed Dozer Line, Other - See Comments
- Completed Dozer Line, Repair Needed
- Completed Hand Line, Repair Needed
- Road as Completed Line, Completed - Inspected
- Road as Completed Line, No Repair Needed
- Road as Completed Line, Repair Needed
- Wildfire Daily Fire Perimeter



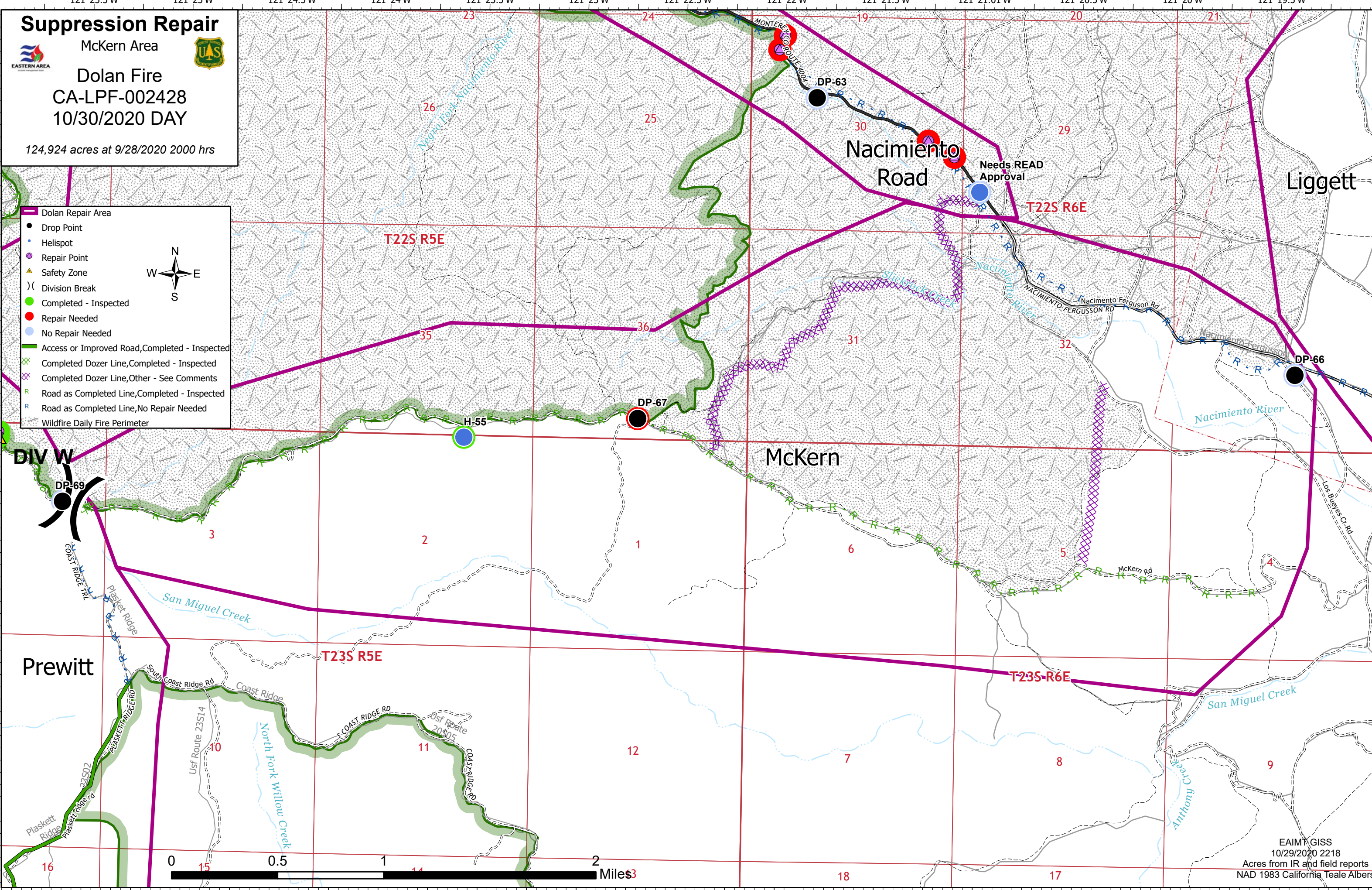
EAMT GISS
 10/29/2020 2217
 Acres from IG and field reports
 NAD 1983 California Teale Atbers

Suppression Repair

Mckern Area
Dolan Fire
CA-LPF-002428
10/30/2020 DAY

124,924 acres at 9/28/2020 2000 hrs

- Dolan Repair Area
- Drop Point
- Helispot
- Repair Point
- Safety Zone
- Division Break
- Completed - Inspected
- Repair Needed
- No Repair Needed
- Access or Improved Road, Completed - Inspected
- Completed Dozer Line, Completed - Inspected
- Completed Dozer Line, Other - See Comments
- Road as Completed Line, Completed - Inspected
- Road as Completed Line, No Repair Needed
- Wildfire Daily Fire Perimeter



Suppression Repair

Nacimiento Road

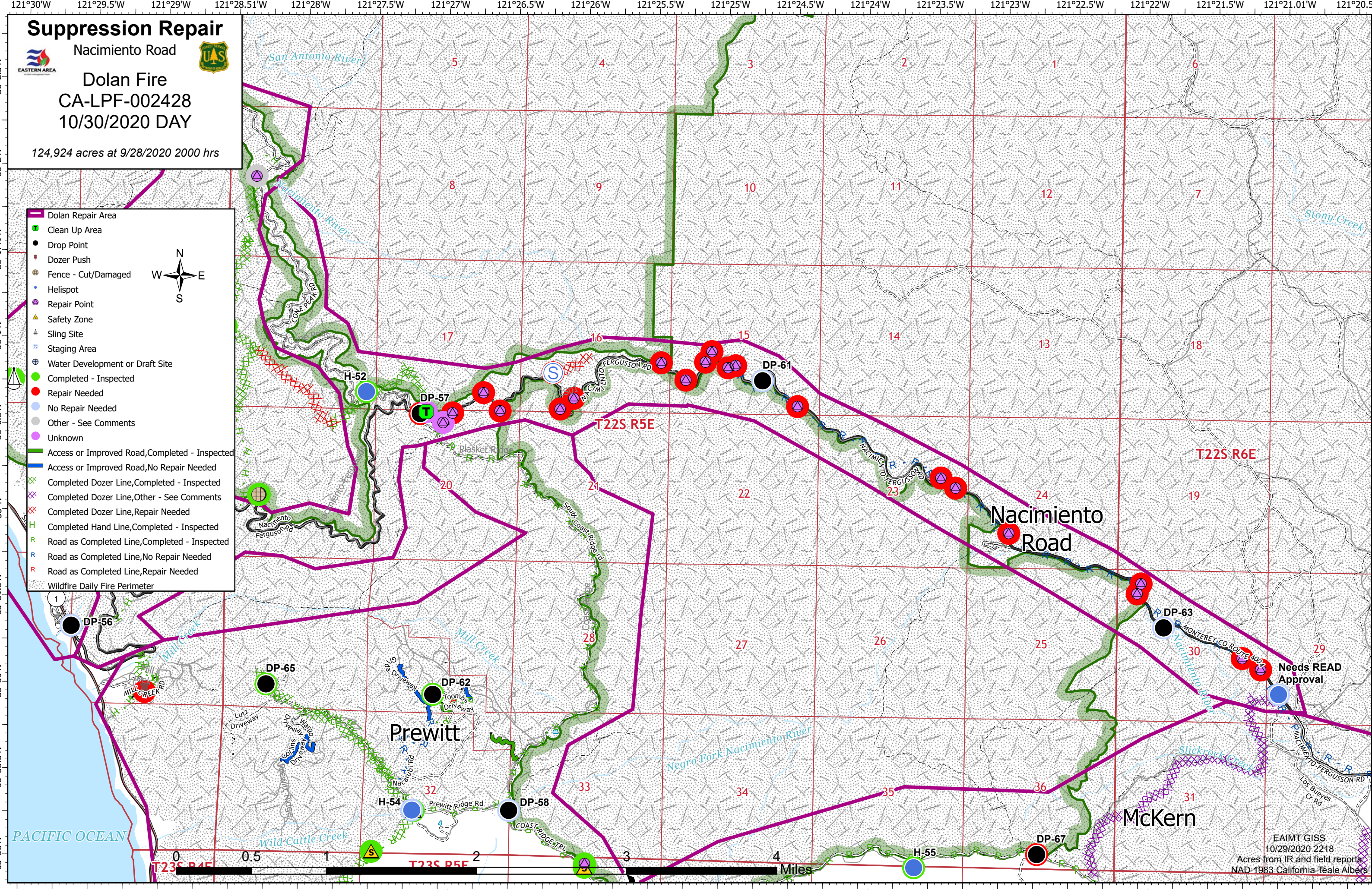


Dolan Fire

CA-LPF-002428
10/30/2020 DAY

124,924 acres at 9/28/2020 2000 hrs

- Dolan Repair Area
- Clean Up Area
- Drop Point
- Dozer Push
- Fence - Cut/Damaged
- Helispot
- Repair Point
- Safety Zone
- Sling Site
- Staging Area
- Water Development or Draft Site
- Completed - Inspected
- Repair Needed
- No Repair Needed
- Other - See Comments
- Unknown
- Access or Improved Road, Completed - Inspected
- Access or Improved Road, No Repair Needed
- Completed Dozer Line, Completed - Inspected
- Completed Dozer Line, Other - See Comments
- Completed Dozer Line, Repair Needed
- Completed Hand Line, Completed - Inspected
- Road as Completed Line, Completed - Inspected
- Road as Completed Line, No Repair Needed
- Road as Completed Line, Repair Needed
- Wildfire Daily Fire Perimeter



EAIMT GISS
10/29/2020 2218
Acres from IR and field reports
NAD 1983 California Teale Albers

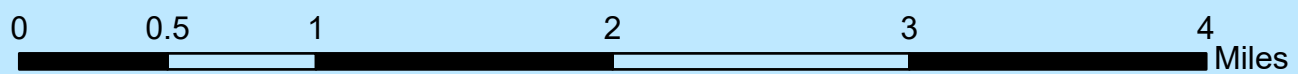
Suppression Repair

Partington Area

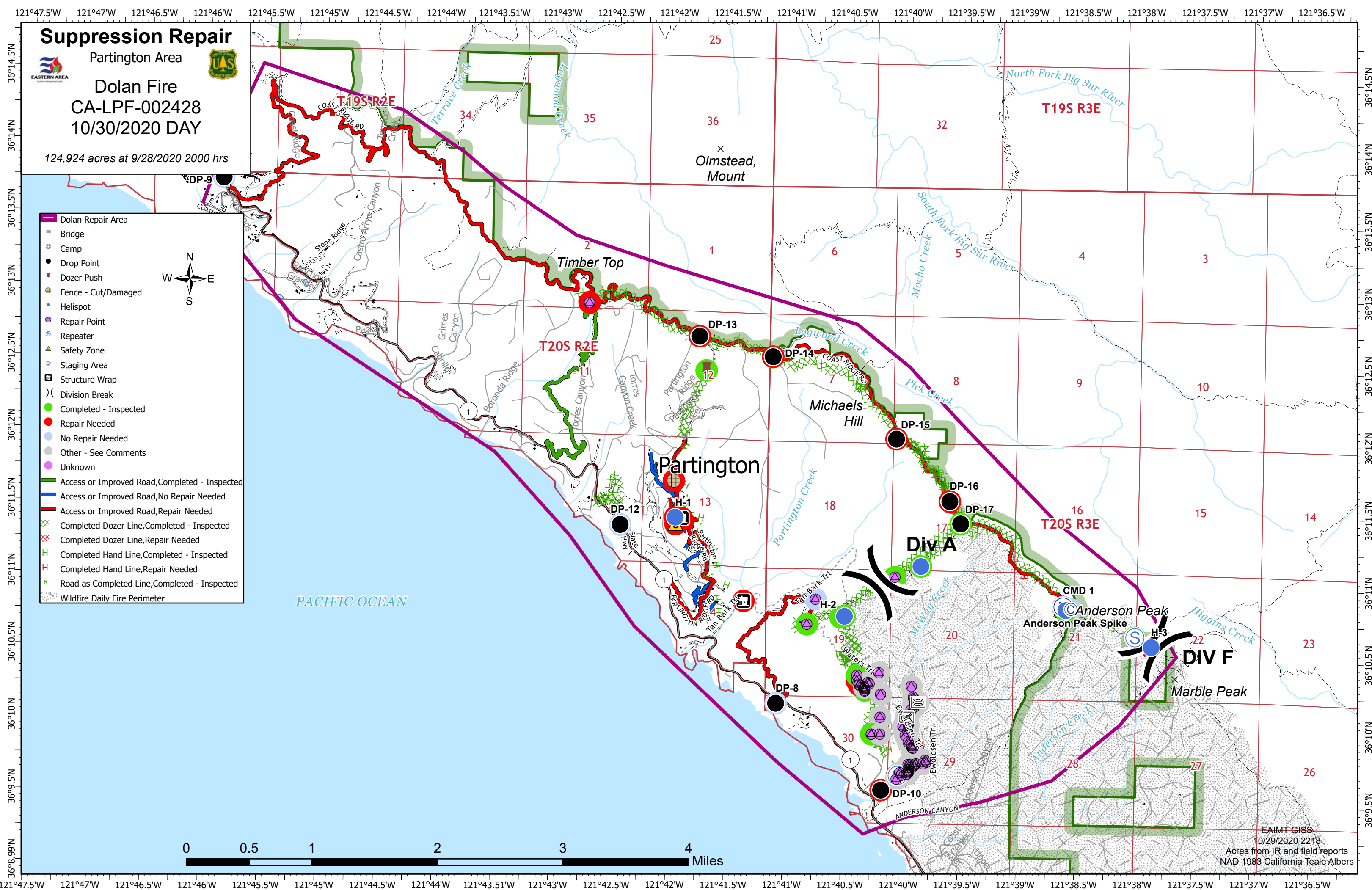
Dolan Fire
CA-LPF-002428
10/30/2020 DAY

124,924 acres at 9/28/2020 2000 hrs

- Dolan Repair Area
- Bridge
- Camp
- Drop Point
- Dozer Push
- Fence - Cut/Damaged
- Helispot
- Repair Point
- Repeater
- Safety Zone
- Staging Area
- Structure Wrap
- Division Break
- Completed - Inspected
- Repair Needed
- No Repair Needed
- Other - See Comments
- Unknown
- Access or Improved Road, Completed - Inspected
- Access or Improved Road, No Repair Needed
- Access or Improved Road, Repair Needed
- Completed Dozer Line, Completed - Inspected
- Completed Dozer Line, Repair Needed
- Completed Hand Line, Completed - Inspected
- Completed Hand Line, Repair Needed
- Road as Completed Line, Completed - Inspected
- Wildfire Daily Fire Perimeter



EAIMT GISS
10/29/2020 2218
Acres from IR and field reports
NAD 1983 California Teale Albers



Suppression Repair

Prewitt Area



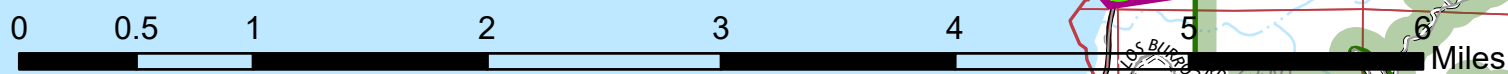
Dolan Fire CA-LPF-002428 10/30/2020 DAY

124,924 acres at 9/28/2020 2000 hrs

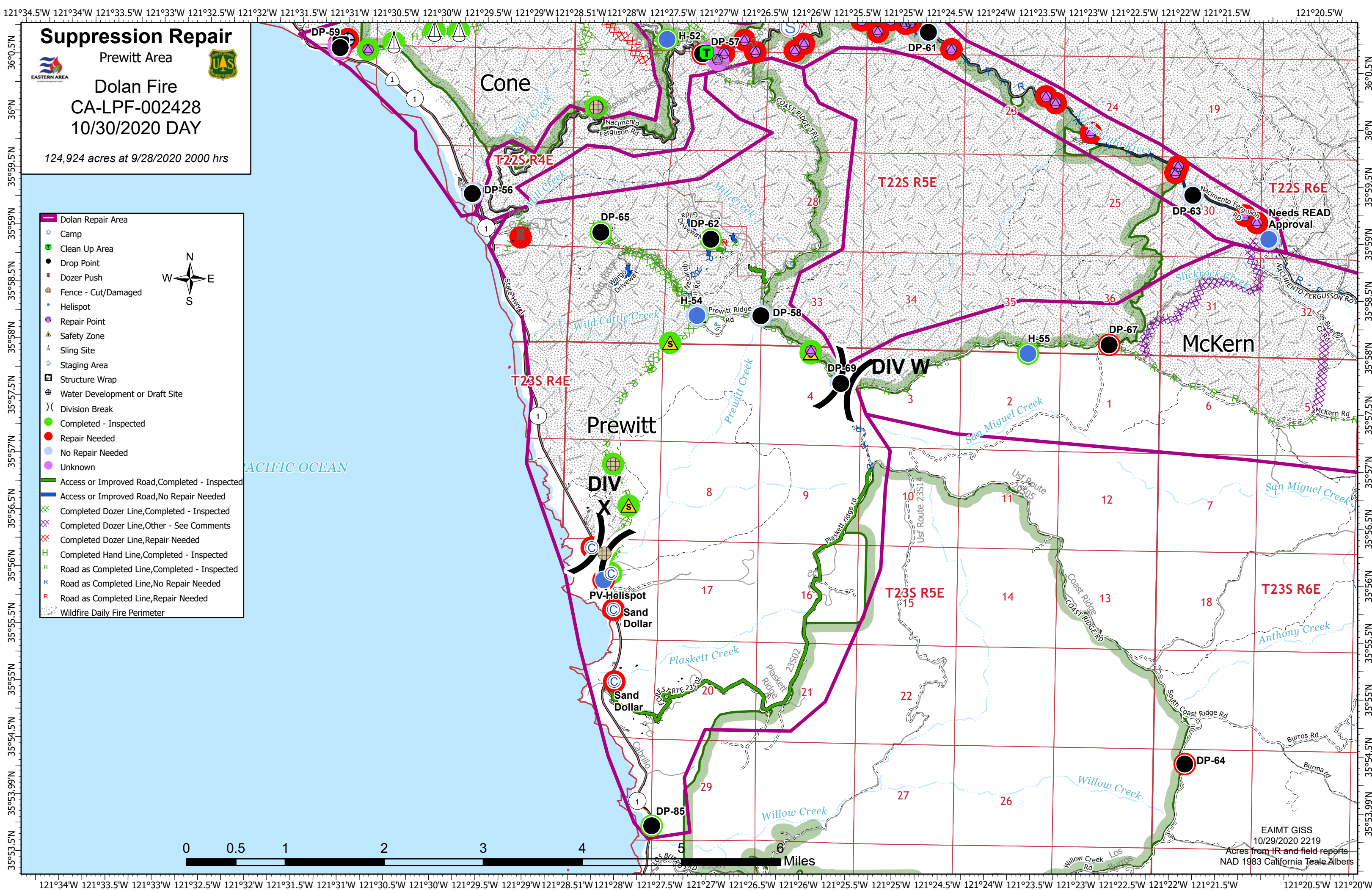
- Dolan Repair Area
- Camp
- Clean Up Area
- Drop Point
- Dozer Push
- Fence - Cut/Damaged
- Helispot
- Repair Point
- Safety Zone
- Sling Site
- Staging Area
- Structure Wrap
- Water Development or Draft Site
- Division Break
- Completed - Inspected
- Repair Needed
- No Repair Needed
- Unknown
- Access or Improved Road, Completed - Inspected
- Access or Improved Road, No Repair Needed
- Completed Dozer Line, Completed - Inspected
- Completed Dozer Line, Other - See Comments
- Completed Dozer Line, Repair Needed
- Completed Hand Line, Completed - Inspected
- Road as Completed Line, Completed - Inspected
- Road as Completed Line, No Repair Needed
- Road as Completed Line, Repair Needed
- Wildfire Daily Fire Perimeter



PACIFIC OCEAN



EAIMT GISS
10/29/2020 2219
Acres from IR and field reports
NAD 1983 California Teale Albers



Suppression Repair



Santa Lucia Area

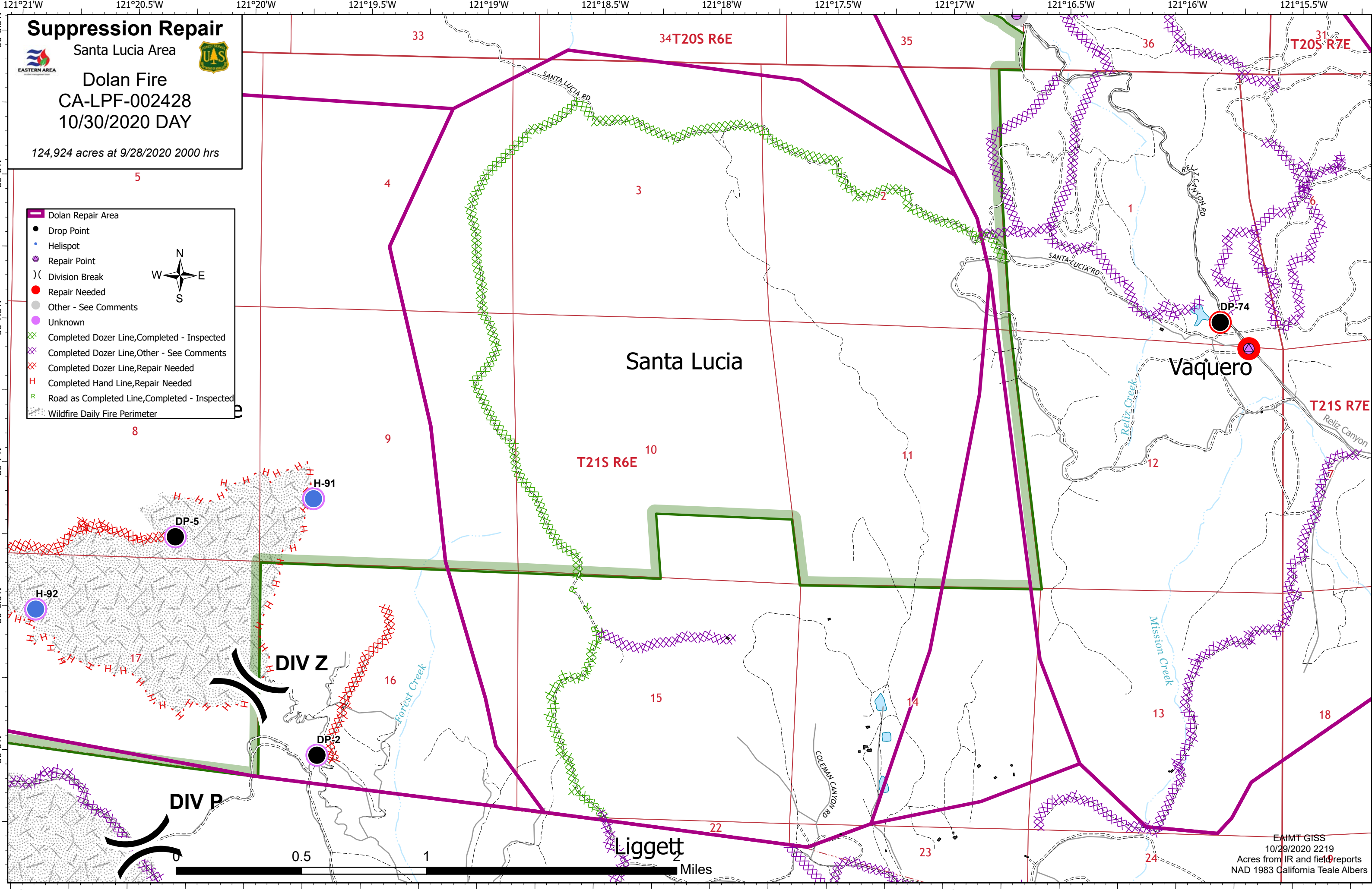


Dolan Fire

CA-LPF-002428
10/30/2020 DAY

124,924 acres at 9/28/2020 2000 hrs

- Dolan Repair Area
- Drop Point
- Helispot
- Repair Point
- Division Break
- Repair Needed
- Other - See Comments
- Unknown
- Completed Dozer Line, Completed - Inspected
- Completed Dozer Line, Other - See Comments
- Completed Dozer Line, Repair Needed
- Completed Hand Line, Repair Needed
- Road as Completed Line, Completed - Inspected
- Wildfire Daily Fire Perimeter



Suppression Repair

Seco Area



Dolan Fire

CA-LPF-002428
10/30/2020 DAY

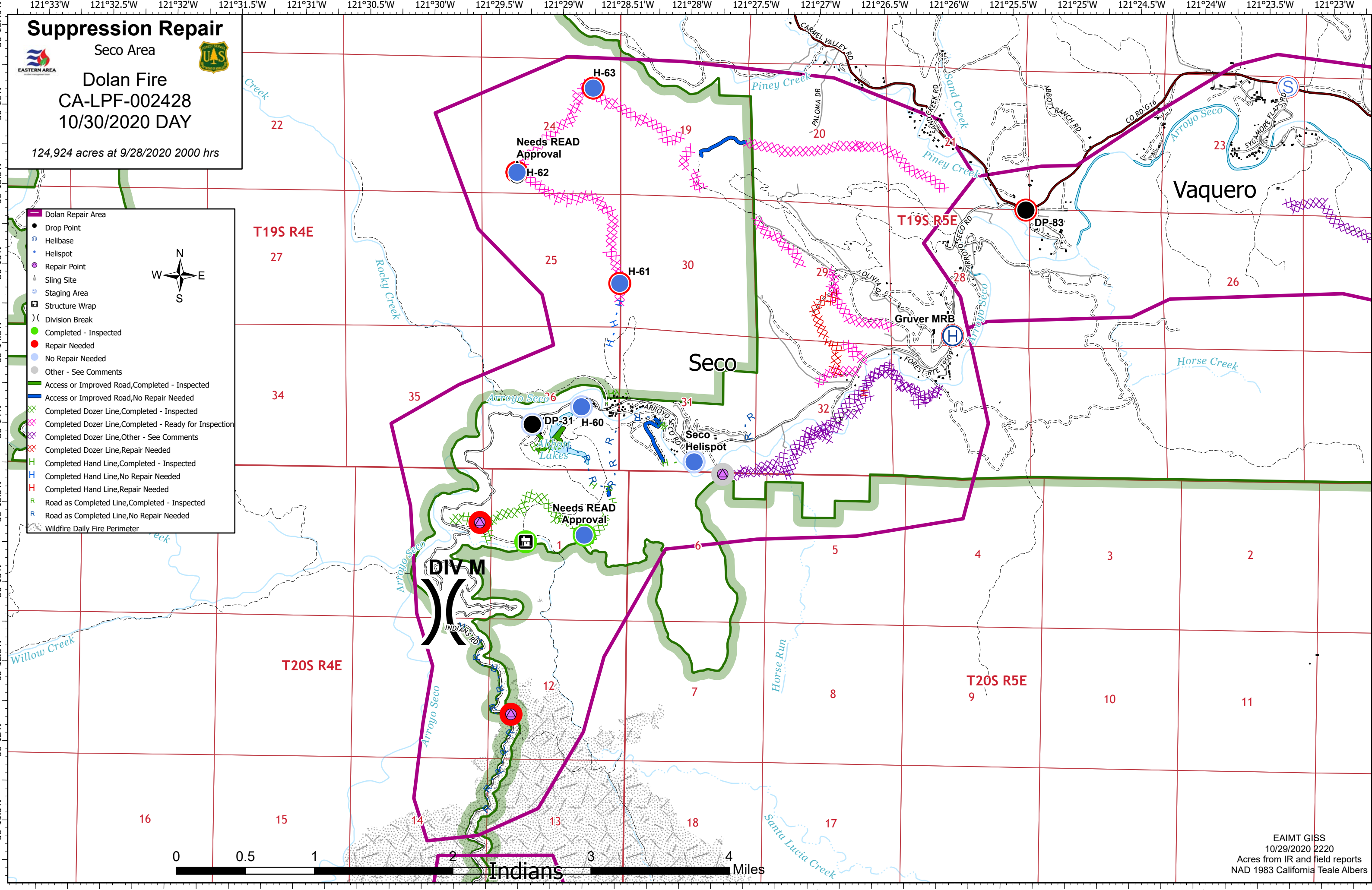
124,924 acres at 9/28/2020 2000 hrs

Legend

- Dolan Repair Area
- Drop Point
- Helibase
- Helispot
- Repair Point
- Sling Site
- Staging Area
- Structure Wrap
- Division Break
- Completed - Inspected
- Repair Needed
- No Repair Needed
- Other - See Comments
- Access or Improved Road, Completed - Inspected
- Access or Improved Road, No Repair Needed
- Completed Dozer Line, Completed - Inspected
- Completed Dozer Line, Completed - Ready for Inspection
- Completed Dozer Line, Other - See Comments
- Completed Dozer Line, Repair Needed
- Completed Hand Line, Completed - Inspected
- Completed Hand Line, No Repair Needed
- Completed Hand Line, Repair Needed
- Road as Completed Line, Completed - Inspected
- Road as Completed Line, No Repair Needed
- Wildfire Daily Fire Perimeter



EAIMT GISS
10/29/2020 2220
Acres from IR and field reports
NAD 1983 California Teale Albers



Suppression Repair

Vaquero Area

Dolan Fire
CA-LPF-002428
10/30/2020 DAY

124,924 acres at 9/28/2020 2000 hrs

- Dolan Repair Area
- Bridge
- Drop Point
- Helibase
- Helispot
- Repair Point
- Repeater
- Safety Zone
- Sling Site
- Staging Area
- Structure Wrap
- Division Break
- Completed - Inspected
- Repair Needed
- No Repair Needed
- Other - See Comments
- Unknown
- Access or Improved Road, Completed - Inspected
- Access or Improved Road, No Repair Needed
- Completed Dozer Line, Completed - Inspected
- Completed Dozer Line, Completed - Ready for Inspection
- Completed Dozer Line, Other - See Comments
- Completed Dozer Line, Repair Needed
- Completed Hand Line, Completed - Inspected
- Completed Hand Line, No Repair Needed
- Completed Hand Line, Repair Needed
- Road as Completed Line, Completed - Inspected
- Road as Completed Line, No Repair Needed
- Wildfire Daily Fire Perimeter

